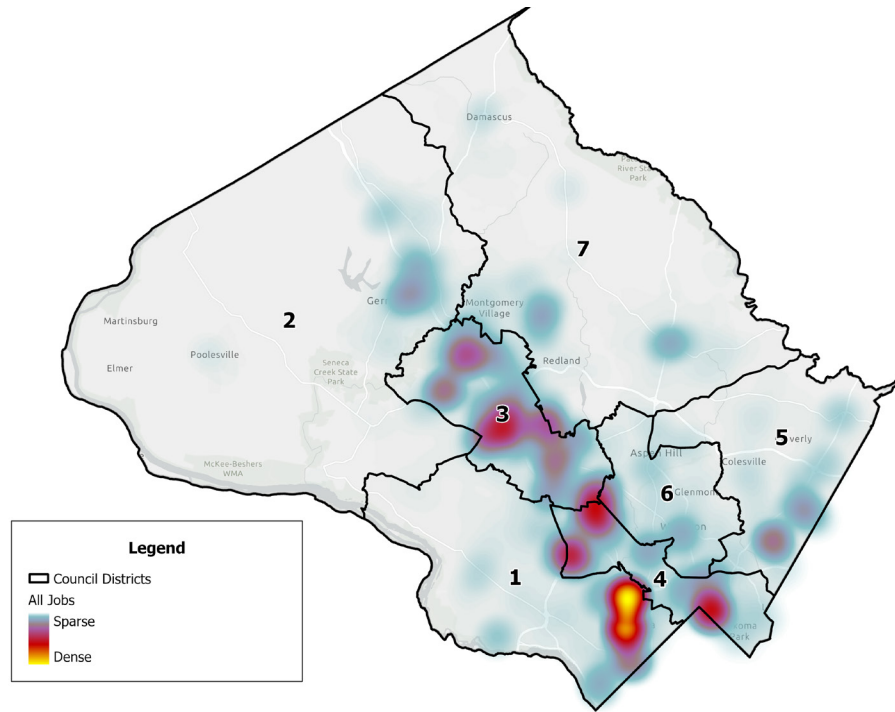


EMPLOYMENT BY COUNTY COUNCIL DISTRICT

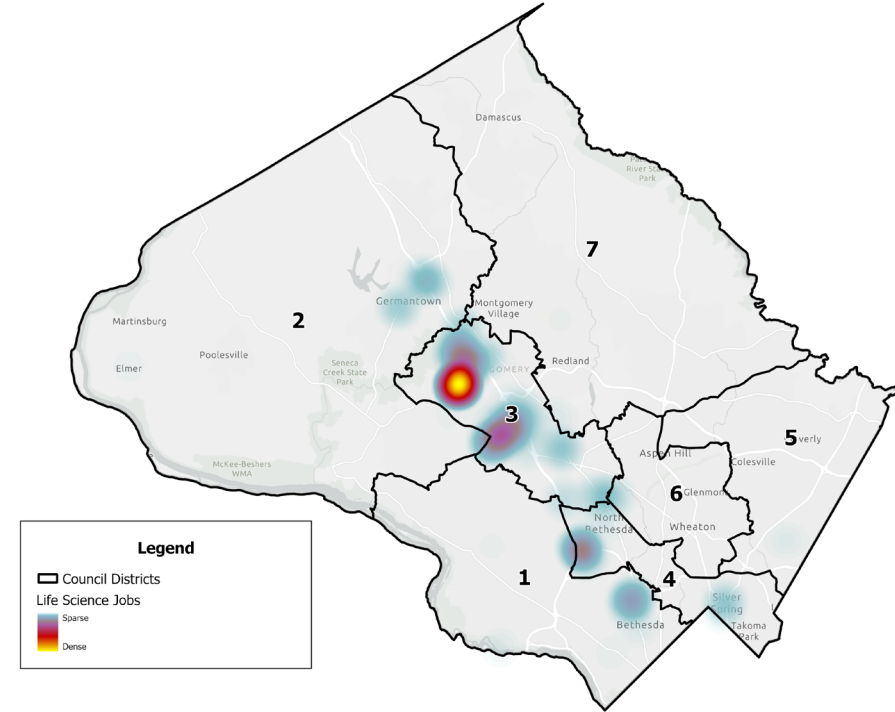
Key Montgomery County Sectors and Industries in 2024

Map 1: Total Job Distribution, All Jobs - Public and Private Sectors



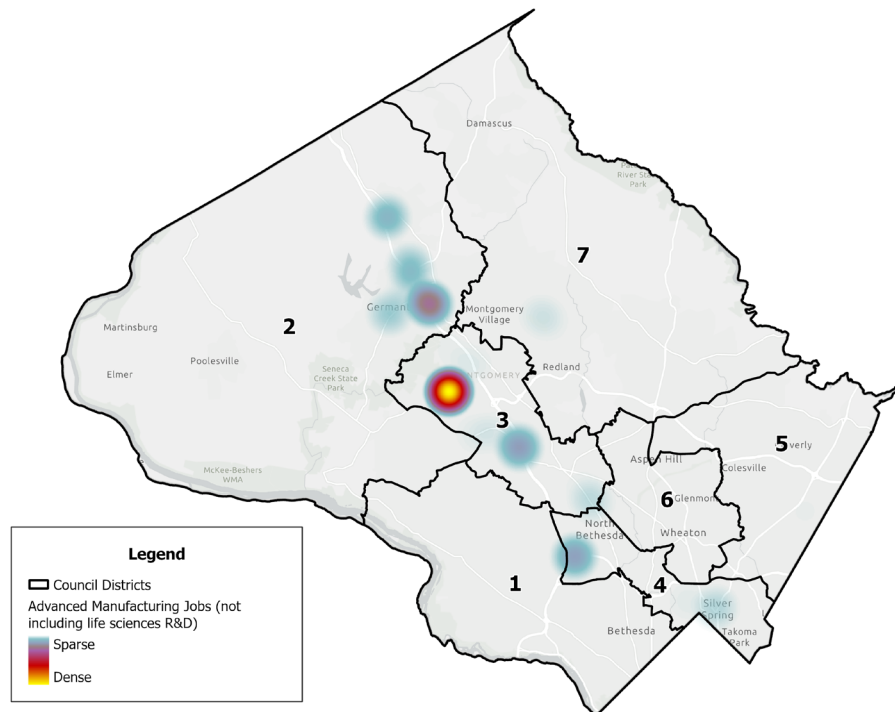
Council District	Total Jobs
1	118,331
2	30,959
3	134,104
4	85,489
5	38,251
6	34,317
7	39,409
Total	480,860

Map 2: Life Sciences Job Distribution



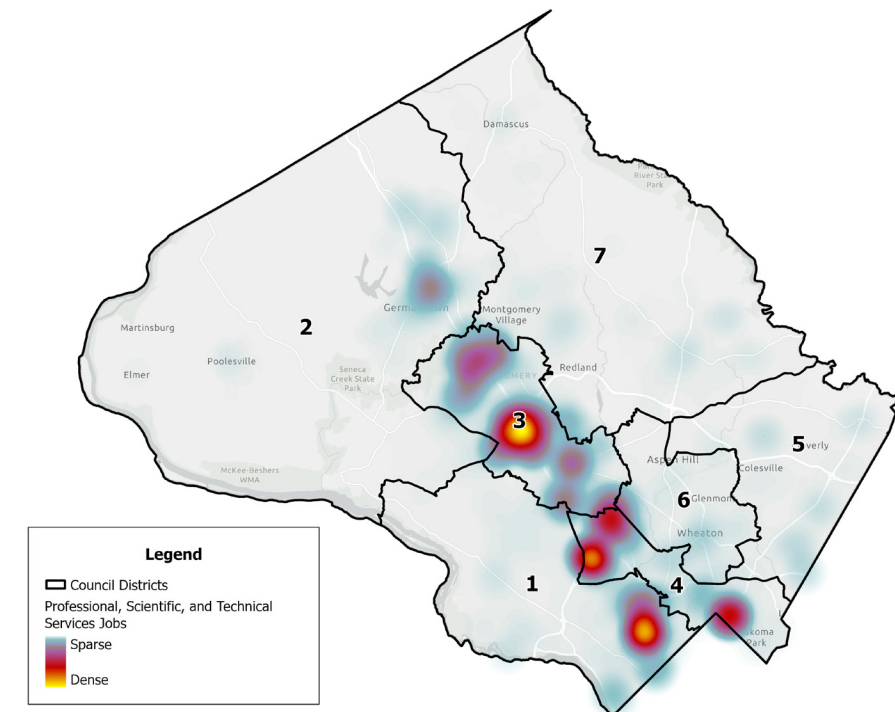
Council District	Life Sciences
1	1,316
2	1,134
3	12,565
4	1,995
5	110
6	286
7	120
Total	17,526

Map 3: Advanced Manufacturing Job Distribution



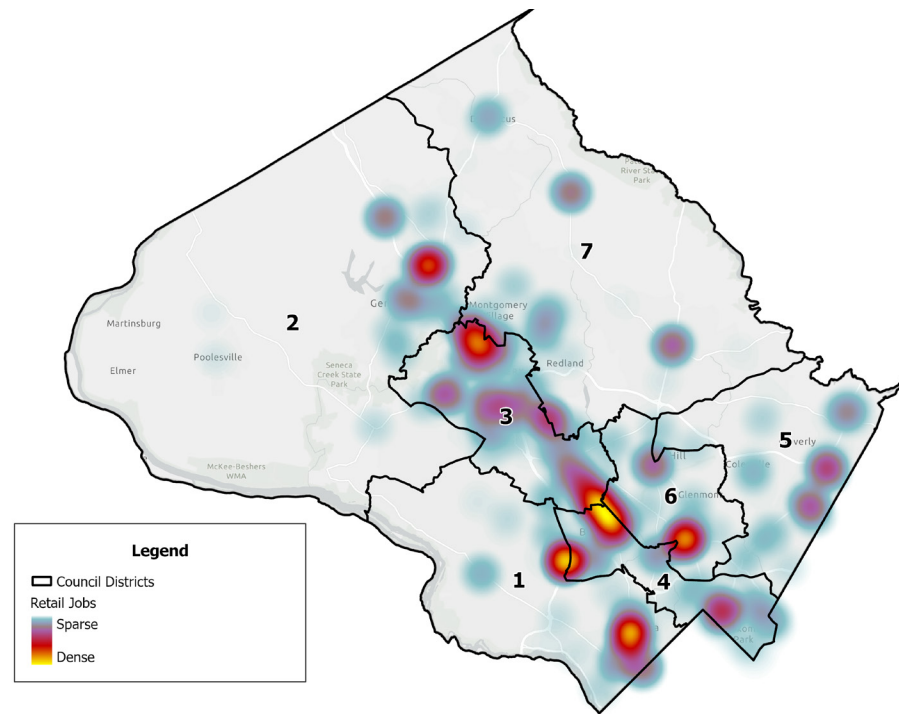
Council District	Advanced Manufacturing
1	18
2	2,966
3	6,621
4	315
5	5
6	7
7	82
Total	10,014

Map 4: Professional, Scientific & Technical Services Job Distribution



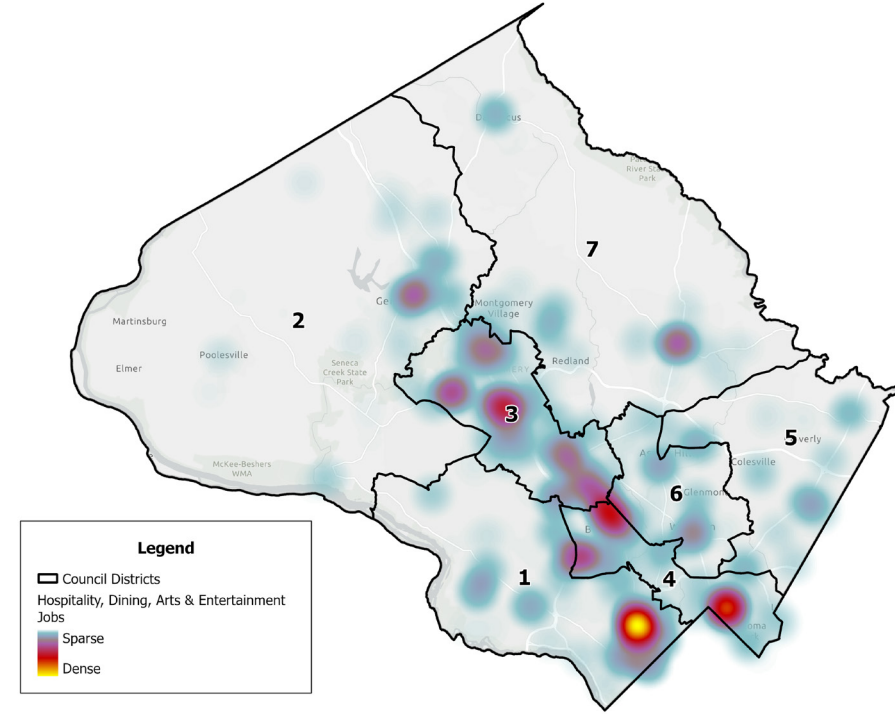
Council District	Professional, Scientific & Technical Services
1	12,451
2	4,288
3	25,275
4	14,944
5	1,661
6	2,109
7	2,540
Total	63,268

Map 5: Retail Job Distribution



Council District	Retail
1	1,352
2	7,066
3	25,807
4	2,625
5	120
6	300
7	284
Total	37,554

Map 6: Hospitality, Dining, Arts, & Entertainment Job Distribution



Council District	Hospitality, Dining, Arts, & Entertainment Jobs
1	1,334
2	4,100
3	19,186
4	2,310
5	115
6	293
7	202
Total	27,540

Data & Sources

- Map 1, All Jobs: QCEW Microdata from MDOL, 2024 Quarter 2, private sector, USPS, and some local government; Federal jobs from Montgomery Planning Federal Employment Survey, January 2025; County and M-NCPPC employment from organization provided in 2021
- Map 2, Life Sciences: QCEW Microdata from MDOL, 2024 Quarter 2, private sector only; NAICS codes 541713, 541714, 541715, & 3254
- Map 3, Advanced Manufacturing: QCEW Microdata from MDOL, 2024 Quarter 2, private sector only; NAICS codes 3254 & 334
- Map 4, Professional, Scientific & Technical Services: QCEW Microdata from MDOL, 2024 Quarter 2, private sector only; NAICS code 54
- Map 5, Retail: QCEW Microdata from MDOL, 2024 Quarter 2, private sector only; NAICS codes 44 & 45
- Map 6, Hospitality, Dining, Arts & Entertainment: QCEW Microdata from MDOL, 2024 Quarter 2, private sector only; NAICS codes 71 & 72

Notes

Our most recent and accurate data for Federal job location counts come from January of 2025 before any of the significant layoffs that came later in the year, and Federal jobs are only included in Map 1. We will continue to track employment at Federal agencies as data become available. Employment data in these maps and tables are subject to an agreement between Montgomery Planning and the Maryland Department of Labor that prevents disclosure of information that would identify individual businesses.

Prepared by
 Montgomery Planning Research and Strategic Projects Division
Contact:
 Benjamin Kraft, Planner IV
Benjamin.Kraft@montgomeryplanning.org