

**Description of Property:** Please describe the building and surrounding environment. Include information on significant structures, landscape features, or other significant features of the property:

**Description of Work Proposed:** Please give an overview of the work to be undertaken:

Work Item 1: \_\_\_\_\_

Description of Current Condition:

Proposed Work:

Work Item 2: \_\_\_\_\_

Description of Current Condition:

Proposed Work:

Work Item 3: \_\_\_\_\_

Description of Current Condition:

Proposed Work:

# HISTORIC AREA WORK PERMIT CHECKLIST OF APPLICATION REQUIREMENTS

	Required Attachments						
Proposed Work	I. Written Description	2. Site Plan	3. Plans/ Elevations	4. Material Specifications	5. Photographs	6. Tree Survey	7. Property Owner Addresses
New Construction	*	*	*	*	*	*	*
Additions/ Alterations	*	*	*	*	*	*	*
Demolition	*	*	*		*		*
Deck/Porch	*	*	*	*	*	*	*
Fence/Wall	*	*	*	*	*	*	*
Driveway/ Parking Area	*	*		*	*	*	*
Grading/Excavation/ Landscaping	*	*		*	*	*	*
Tree Removal	*	*		*	*	*	*
Siding/ Roof Changes	*	*	*	*	*		*
Window/ Door Changes	*	*	*	*	*		*
Masonry Repair/ Repoint	*	*	*	*	*		*
Signs	*	*	*	*	*		*

**507 ALBANY AVENUE  
TAKOMA PARK, MD 20912**

**HAWP APPLICATION  
12/17/2025  
WAK TOK architects**

**Scope of Work**

**Front Porch Repairs:**

The existing front porch will remain in its current location, footprint, and structural configuration. No expansion or alteration to the porch’s massing, scale, or relationship to the house or streetscape is proposed. The scope of work is limited to the repair and replacement of deteriorated porch finishes, including new clad columns, new railings, new stair treads, and new decking. These improvements are intended to maintain the existing character of the porch while enhancing its durability and appearance. Because the porch footprint and structure are unchanged, the work will not impact the visual rhythm of the streetscape and will remain fully compatible with the surrounding historic district.

**Siding:**

Existing siding will be replaced with new siding, ensuring no change to the scale or massing of the structure.

**Gutters and Downspouts:**

Existing gutters and downspouts will be replaced, ensuring no change to the scale or massing of the structure.









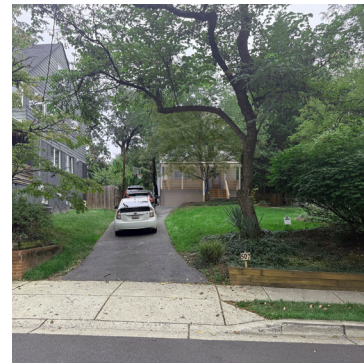
511



509



507  
EXISTING



507  
PROPOSED



505



501



514



512



510



508



506



504





EXISTING



PROPOSED

507 ALBANY AVENUE  
TAKOMA PARK, MD 20912

HAWP APPLICATION  
WAK TOK architects

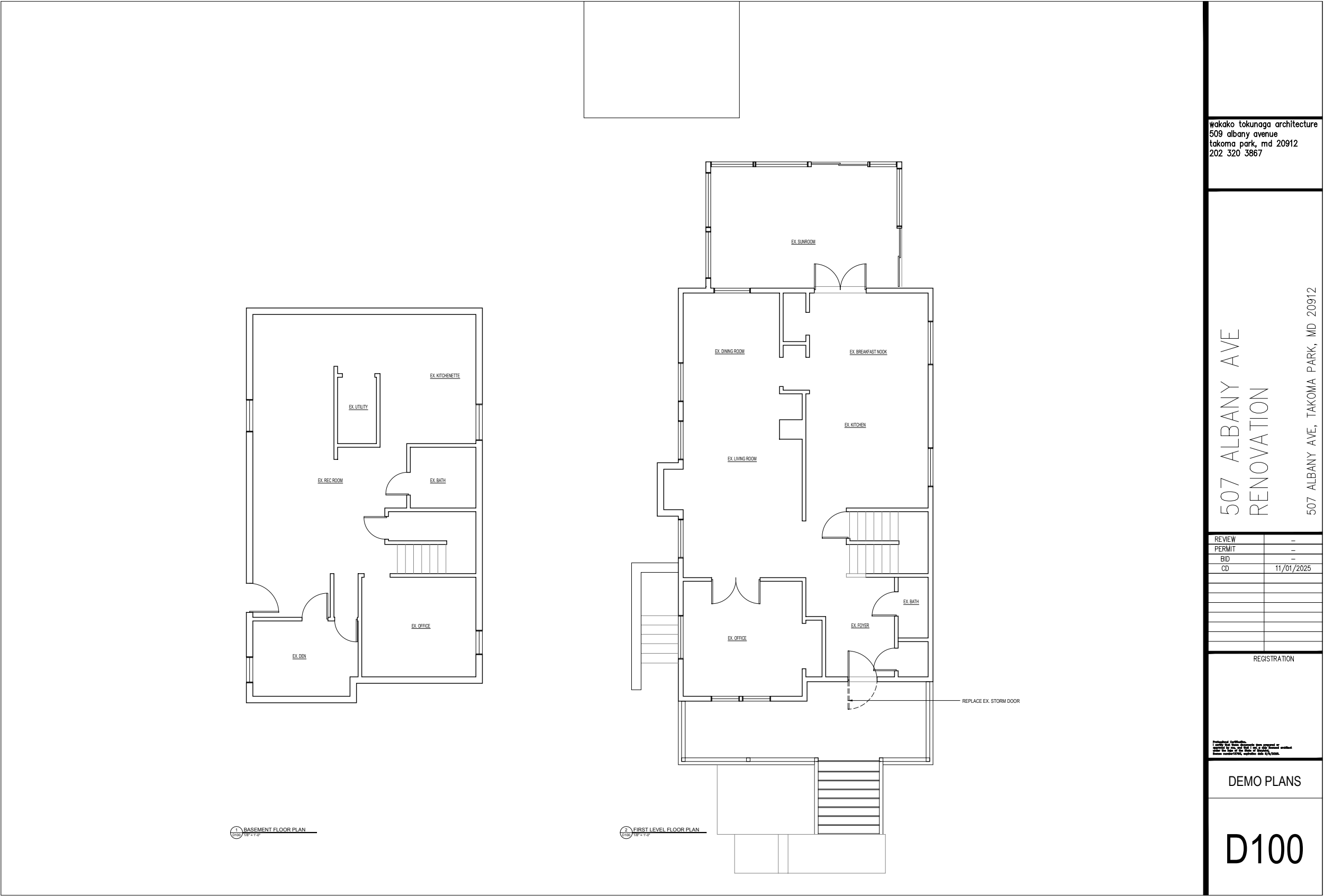


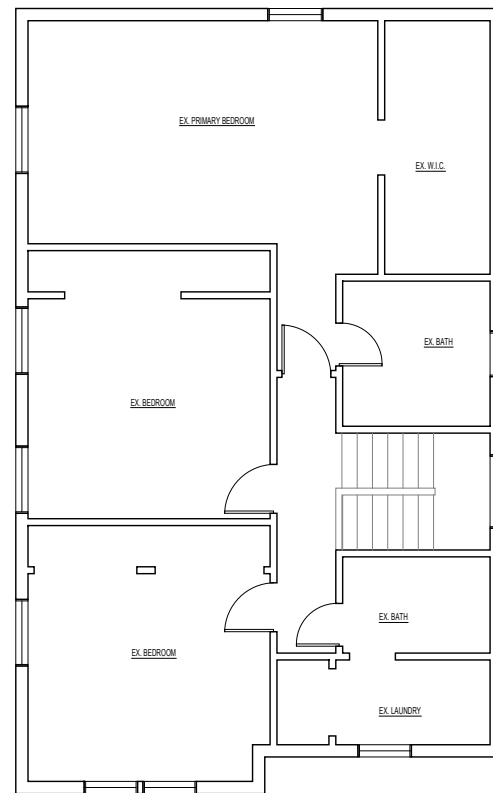


507 ALBANY AVENUE  
TAKOMA PARK, MD 20912

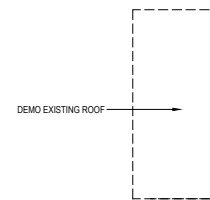
HAWP APPLICATION  
WAK TOK architects







1 SECOND LEVEL FLOOR PLAN  
D101 1/8" = 1'-0"



2 ROOF PLAN  
D101 1/8" = 1'-0"

wakako tokunaga architecture  
509 albany avenue  
takoma park, md 20912  
202 320 3867

507 ALBANY AVE  
RENOVATION

507 ALBANY AVE, TAKOMA PARK, MD 20912

[illegible]

REGISTRATION

**Professional Certification.**  
I certify that these documents were prepared or  
approved by me, and that I am a duly licensed architect  
under the laws of the State of Maryland.  
License number: E795, expiration date 2/6/2008.

## DEMO PLANS

D101

507 ALBANY AVENUE  
TAKOMA PARK, MD 20912

HAWP APPLICATION  
WAK TOK architects



wakako tokunaga architecture  
509 albany avenue  
takoma park, md 20912  
202 320 3867

507 ALBANY AVE  
RENOVATION

507 ALBANY AVE, TAKOMA PARK, MD 20912

REVIEW	-
PERMIT	-
BID	-
CD	11/01/2025

REGISTRATION

Projected details:  
All dimensions are subject to change without notice.  
The owner is responsible for obtaining all necessary permits.  
The architect is not responsible for the construction of the project.

FLOOR PLANS

A100

507 ALBANY AVENUE  
TAKOMA PARK, MD 20912

HAWP APPLICATION  
WAK TOK architects







wakako tokunaga architecture  
509 albany avenue  
takoma park, md 20912  
202 320 3867

## 507 ALBANY AVE RENOVATION

507 ALBANY AVE, TAKOMA PARK, MD 20912

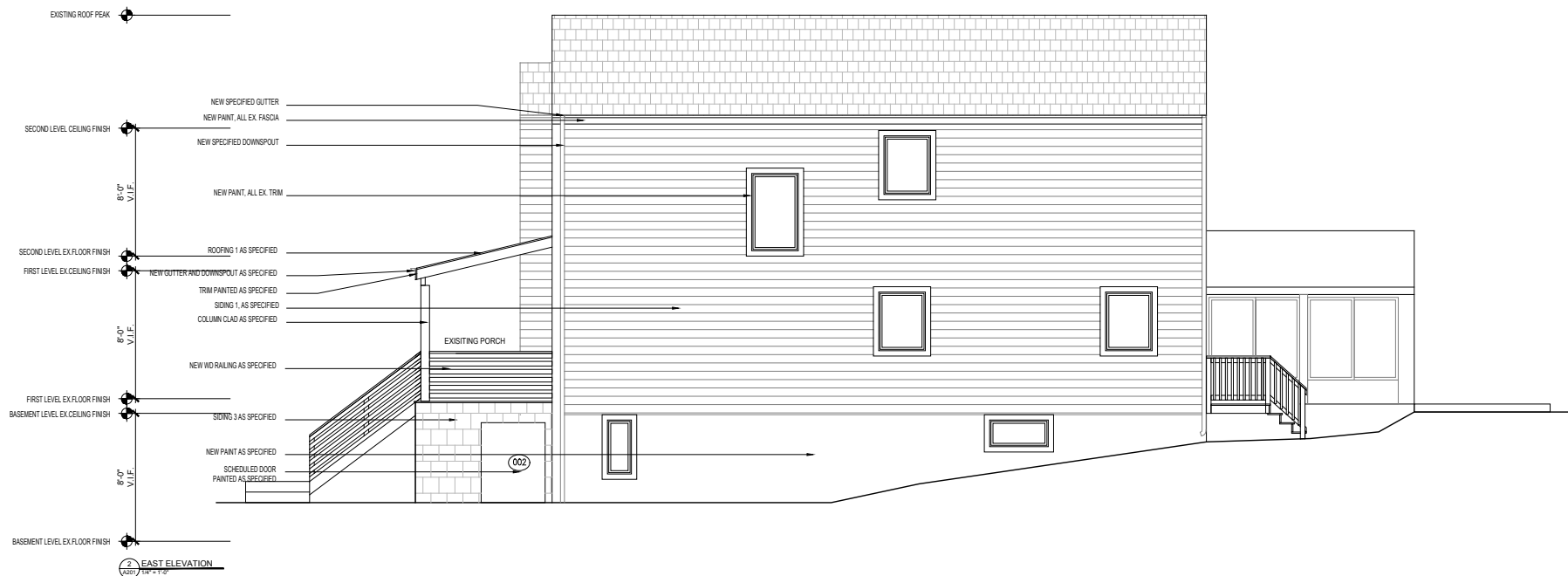
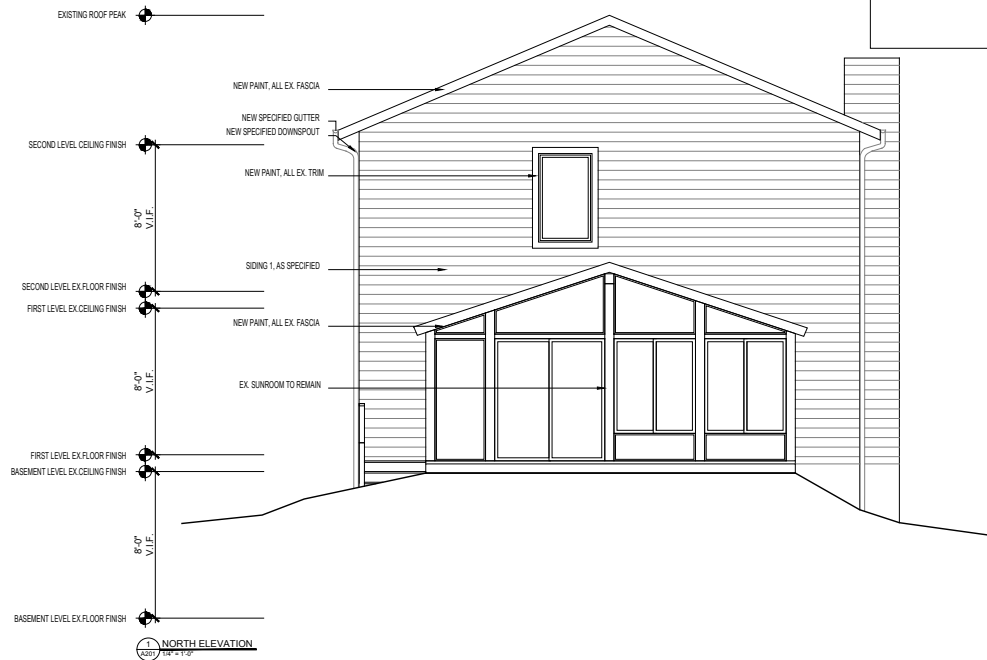
REVIEW	-
PERMIT	-
BID	-
CD	11/01/2025

REGISTRATION

Professional seal and stamp required for all drawings. All drawings are prepared by Wakako Tokunaga Architecture, Inc. and are the property of Wakako Tokunaga Architecture, Inc. No part of this drawing may be reproduced without written permission of Wakako Tokunaga Architecture, Inc.

ELEVATIONS

# A200



wakako tokunaga architecture  
509 albany avenue  
takoma park, md 20912  
202 320 3867

## 507 ALBANY AVE RENOVATION

507 ALBANY AVE, TAKOMA PARK, MD 20912

REVIEW	-
PERMIT	-
BID	-
CD	11/01/2025

REGISTRATION

Professional Seal/Stamp:  
I, Wakako Tokunaga, Architect, No. 10000000000000000000, State of Maryland  
Expiry Date: 12/31/2025, Renewal Due: 12/31/2025

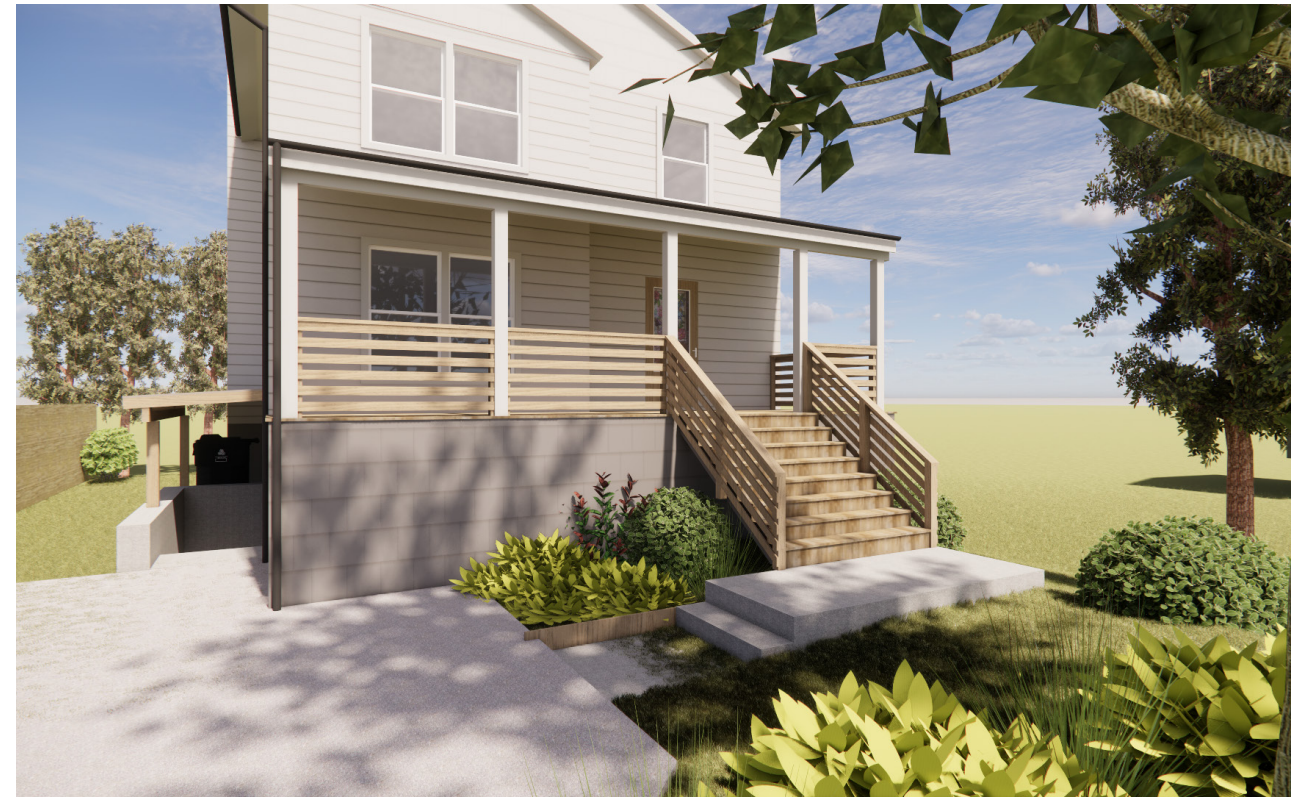
ELEVATIONS

# A201

507 ALBANY AVENUE  
TAKOMA PARK, MD 20912

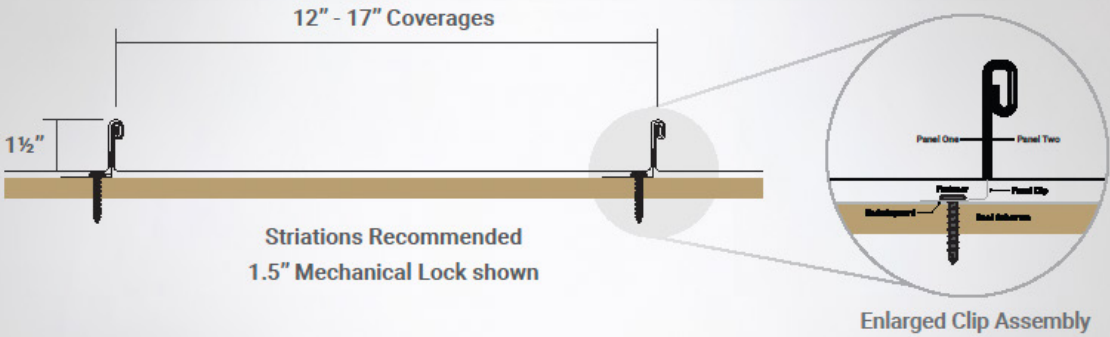
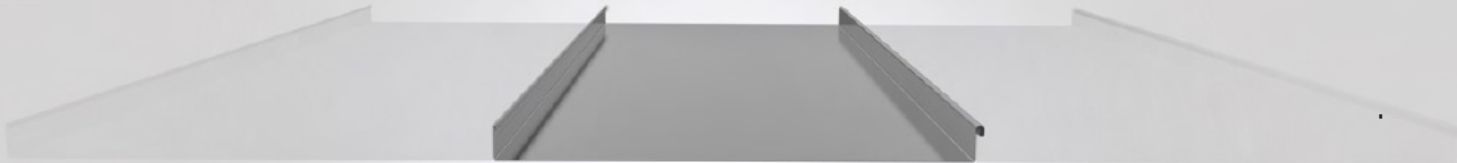
HAWP APPLICATION  
WAK TOK architects







METAL STANDING SEAM ROOF



**Panel Overlap Detail**

1. **Clip System:** Fixed clip system shown, Floating clip systems available

2. **Substrate:** Plywood substrate material shown

3. **Underlayment:** High Temp Ice & Water

Roof Coverage	12"-17"
Radius Panel	Available
Panel Gauges	22*, 24*, 26
Fastener Options	Concealed Clip System
Panel Length	3' to 100'+
Rib Height	1", or 1.5"
Roof Slope	Minimum 1:12 or Greater with Mastic
Impact Rating	UL 2218
Wind Uplift Rating	ASTM E1592
Warranty	Based on Paint System
For more information	1.877.783.3568

SHOP BY MATERIAL

- Aluminum ▶
- Mill Finish Aluminum ▶
- Copper ▶
- Copper Penny Aluminum ▶
- Euro Copper ▶
- Galvalume ▶
- Galvanized Steel ▶
  - Galvanized Steel Gutters
  - Galvanized Steel Downspouts
  - Galvanized Steel Elbows
  - Galvanized Steel Miters
  - Galvanized Steel End Caps
  - Galvanized Steel Screens/Strainers
  - Galvanized Steel Conductor Heads
  - Galvanized Steel Hangers
  - Galvanized Steel Outlets
  - Galvanized Steel Fasteners
  - Galvanized Steel Shanks
  - Galvanized Steel Downspout Hooks
  - Galvanized Steel Drives/Rack & Key
  - Galvanized Steel Downspout Pipe Band
  - Galvanized Steel Offsets
  - Galvanized Steel Flashing
  - Galvanized Steel Sheets
- Designer Copper Aluminum ▶
- Freedom Gray Copper ▶
- Paint Grip Steel ▶
- Preweathered Zinc ▶
- Vinyl Gutter Systems ▶

PRODUCTS ON SALE

- Gutter Machines ▶
- Rain Chains 25% Off ▶

SHOP BY MATERIAL LIST

- Quick Shop ▶

BUY MORE, SAVE MORE!

- Buy In Bulk ▶

SHOP BY PRODUCT LINE



Product Catalog -> Galvanized Steel -> Galvanized Steel Gutters

Galvanized Steel Half Round Gutters, Galvanized Gutters,Rain Gutter Supplies



Click for a Larger View

Half Round Galvanized Gutters, Galvanized Gutters, Half Round Gutters,Rain Gutter Supplies

Products In This Category:				
Product Code	Description	Material	Retail Price	Qty.
GAH105XG26X	5 Half Round Gutter - 10 ft	Galvanized 26 GA	\$28.50 / 10FT	1 Add To Cart
GAH205XG26X	5 Half Round Gutter - 20 ft	Galvanized 26 GA	\$57.00 / 20FT	1 Add To Cart
GAH106XG26X	6 Half Round Gutter - 10 ft	Galvanized 26 GA	\$38.50 / 10FT	1 Add To Cart
GAH206XG26X	6 Half Round Gutter - 20 ft	Galvanized 26 GA	\$77.00 / 20FT	1 Add To Cart
GAH107XG26X	7 Half Round Gutter	Galvanized 26 GA	\$100.50 / 10FT	1 Add To Cart
GAH108XG26X	8 Half Round Gutter	Galvanized 26 GA	\$108.25 / 10FT	1 Add To Cart

Half Round Galvanized gutters have been around for decades because of their strength and corrosion resistance. Heavy gauge steel hot dipped with zinc gives the gutter both added strength and superior resistance to the elements.

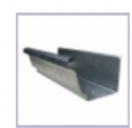
Available in 5", 6", 7", and 8".

Call for custom sizes, profiles, and thicknesses.

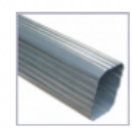
[My Account](#)

[Shopping Cart](#)

May We Also Recommend:



**Galvanized Steel Gutters**  
Galvanized rain gutters are stronger and more durable than...



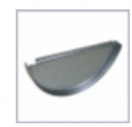
**Galvanized Steel Downspouts**  
We carry an assortment of galvanized downspouts in various...



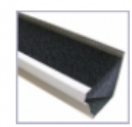
**Galvanized Steel Elbows**  
Galvanized Elbows are fittings that attach to the...



**Galvanized Steel Miters**  
These galvanized miters are used to connect two lengths of...



**Galvanized Steel End Caps**  
The end cap is the fitting that closes off the end of the...



**Galvanized Steel Screens/Strainers**  
We've done the research, so you don't have to! We have the...

SHOP BY MATERIAL

- Aluminum ▶
- Mill Finish Aluminum ▶
- Copper ▶
- Copper Penny Aluminum ▶
- Euro Copper ▶
- Galvalume ▶
- Galvanized Steel ▶
- Designer Copper Aluminum ▶
- Freedom Gray Copper ▶
- Paint Grip Steel ▶
  - Paint Grip Steel Gutters
  - Paint Grip Steel Downspouts
  - K Style Hangers
  - Paint Grip Steel Elbows
  - Paint Grip Steel Miters
  - Paint Grip Steel End Caps
  - Half Round Hangers
  - Galvanized Steel Outlets
  - Galvanized Steel Fasteners
  - Galvanized Steel Drives/Rack & Key
- Preweathered Zinc ▶
- Vinyl Gutter Systems ▶

PRODUCTS ON SALE

- Gutter Machines ▶
- Rain Chains 25% Off ▶

SHOP BY MATERIAL LIST

- Quick Shop ▶

BUY MORE, SAVE MORE!

- Buy In Bulk ▶

SHOP BY PRODUCT LINE

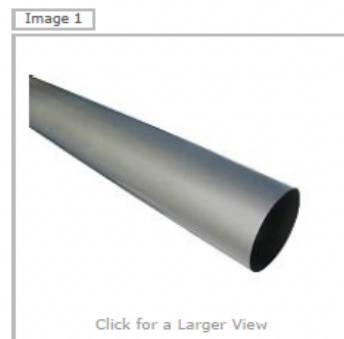
- Gutter Machines ▶
- Gutter Guards ▶
- Rain Chains ▶
- Roof Panel Machines ▶
- Snow Guards ▶
- Gutters ▶
- Downspouts ▶
- Leader Heads ▶
- Half Round Gutter Products ▶
- K Style Gutter Products ▶



Product Catalog -> Paint Grip Steel -> Paint Grip Steel Downspouts



Plain Round Downspouts



Click for a Larger View

Plain Round Paint Grip Steel Downspout

Plain Round Paint Grip Steel Downspout are available in 3", 4", 5" and 6" diameters.

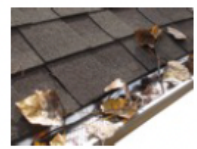
Products In This Category:

Product Code	Description	Material	Retail Price	Qty.
PSPRD3XS26X	3 Plain Rnd Downspout	Paint Grip Steel 26 GA	\$43.75 / 10FT	1 Add To Cart
PSPRD4XS26X	4 Plain Rnd Downspout	Paint Grip Steel 26 GA	\$56.00 / 10FT	1 Add To Cart
PSPRD5XS26X	5 Plain Rnd Downspout	Paint Grip Steel 26 GA	\$81.75 / 10FT	1 Add To Cart
PSPRD6XS26X	6 Plain Rnd Downspout	Paint Grip Steel 26 GA	\$93.50 / 10FT	1 Add To Cart

[My Account](#)

[Shopping Cart](#)

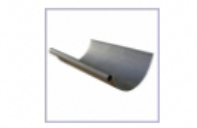
May We Also Recommend:



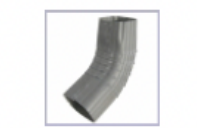
**Gutter Guards**  
Gutter Guards , Gutter...



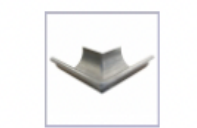
**Rain Chains**  
25% Off Select Rain Chains Rain...



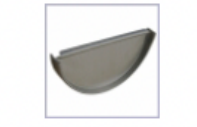
**Paint Grip Steel Gutters**  
Paint Grip Steel Gutters is one of our many selections of...



**Paint Grip Steel Elbows**  
Paint Grip Steel Elbows are what you attach to the downspout...



**Paint Grip Steel Miters**  
Miters are the gutter fittings that connect two gutters at a...



**Paint Grip Steel End Caps**  
A gutter end cap is a fitting that attaches to as well as closes...



[Responding to COVID-19, Learn More.](#)


MARVIN > SIGNATURE COLLECTION > MARVIN SIGNATURE™ ULTIMATE > ULTIMATE CASEMENT NARROW FRAME

# ULTIMATE CASEMENT NARROW FRAME

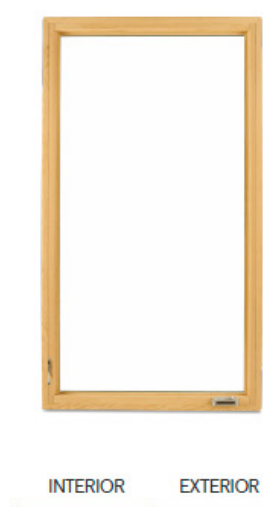
Previously Known as Clad Ultimate Replacement Casement/Contemporary Casement

◀

▶



The Marvin Signature™ Ultimate Casement Narrow Frame window is a contemporary option with a flush exterior and narrow jamb ideal for frame-in-frame replacement, allowing quick and easy installation without disturbing the existing frame or interior wall. With its sleek design and square profiles, this window is a great fit for new construction or remodeling projects that call for slim lines and maximum views. With many design options, including round top shapes, the Ultimate Casement Narrow Frame window is a flexible option that can be sized to complement the most expansive views.



## Features of the Ultimate Casement Narrow Frame Window

- Available in heights up to 8 feet or widths up to 3.5 feet
- Contemporary-style window with sleek design and square profiles
- Narrow jamb for replacement applications that minimizes tear-down of existing frame and walls
- Unique wash mode allows access to both sides of glass from indoors
- Retractable screen option is nearly invisible when the screen is not in use



## Decking



"Forever Decking" - a decking product so long-lasting and maintenance-free you will forever thank yourself for installing this decking over pressure-treated, cedar, or composite products.

Call Now: (832) 800-4MBL or (608) 218-4582

Decking

Midwest Black Locust offers its "Forever Decking" in two stock widths, 3 1/2" or 5", and custom widths and lengths. We will tailor the product to fit your particular aesthetic needs and design. Like all black locust products from Midwest Black Locust, this product is naturally decay, water, and UV resistant. Without the need for any type of waterproofing or sealing, "Forever Decking" weathers to a beautiful grey color, and when wet, produces a natural anti-skid surface under foot. It is a superior choice for pool decks, walkways, piers and boardwalks, stair treads, and any place you don't want the slick feel of wet pressure-treated decking - think especially about those areas where children or commercial activities require additional precautions against slips and falls. "Forever Decking" is also extremely hard and wears well even in heavy-traffic areas like commercial walkways, marine settings, or storage facilities. "Forever Decking" will perform like an exotic hardwood such as teak or ipe without the high cost or environmental consequences of a rain-forest harvested product. Midwest Black Locust's "Forever Decking" starts at \$2.25 / lineal foot.

Our decking material as compared to pressure-treated pine.

Hardie® Plank Lap Siding

Specification Sheet

01

HARDIE® PLANK LAP SIDING

Manufacturer

James Hardie Building Products, Inc.

The products are manufactured at the following locations, with quality control inspections by ICC-ES:

- Cleburne, Texas
- Plant City, Florida
- Reno, Nevada
- Waxahachie, Texas
- Prattville, Alabama
- Peru, Illinois
- Pulaski, Virginia
- Tacoma, Washington
- Fontana, California
- Summerville, South Carolina

Compliance with the following codes

- 2006 thru 2021 International Building Code (IBC)
- 2006 thru 2021 International Residential Code (IRC)

For more information about other compliances and applicable uses, refer to ICC-ES ESR-2290

Features

- Noncombustible
- Dimensionally Stable
- Resists damage from pests
- Weather Resistant-Engineered for Climate®
- Impact resistant
- Sustainable

Use

Hardie® fiber-cement lap siding is used as exterior wall covering. The product complies with IBC Section 1403.9 and IRC Section R703.10. The product may be used on exterior walls of buildings of Type I, II, III and IV construction (IBC)

Description

Hardie® Plank lap siding is a single-faced, cellulose fiber-reinforced cement (fiber-cement) product. Hardie® Plank lap siding complies with ASTM C1186, as Grade II, Type A; has a flame-spread index of 0 and a smoke-developed index of 5 when tested in accordance with ASTM E84; and is classified as noncombustible when tested in accordance with ASTM E136.

Available Sizes

Product	Width (in)	Length	Thickness (in)
Hardie® Plank lap siding*	5-1/4, 6-1/4, 7-1/4, 8, 8-1/4, 9-1/4, 12	12 feet	5/16

\* HZ5: 9-1/4, 12 only available primed HZ10: 5-1/4, 9-1/4, 12 only available primed.

Weight2.31 lbs. per square foot

Texture & Finish

Hardie® Plank lap siding comes in a variety of textures and finishes. The product is available in smooth or wood grain texture. Additional textures are available on a regional basis. Finish options are primed for field paint, or factory finished with ColorPlus® Technology. Color availability varies by region.

Engineered for Climate®

Hardie® Plank lap siding is engineered for performance to specific weather conditions by climate zones as identified by the following map.



SIDING 1: HARDIE PLANK LAP SIDING, COLOR TBD

Hardie® Shingle Siding

Specification Sheet

03

HARDIE® SHINGLE SIDING

Manufacturer

James Hardie Building Products Inc.

The products are manufactured at the following locations, with quality control inspections by ICC-ES:

- Cleburne, Texas
- Plant City, Florida
- Reno, Nevada
- Waxahachie, Texas
- Prattville, Alabama
- Peru, Illinois
- Pulaski, Virginia
- Tacoma, Washington
- Fontana, California
- Summerville, South Carolina

Compliance with the following codes

- 2006 thru 2021 International Building Code (IBC)
- 2006 thru 2021 International Residential Code (IRC)

For more information about other compliances and applicable uses, refer to ICC-ES ESR-2290

Features

- Noncombustible
- Dimensionally Stable
- Resistant to damage caused by pests
- Weather Resistant-Engineered for Climate®
- Impact resistant
- Sustainable

Use

James Hardie fiber-cement cladding shingles are used as exterior wall covering. The product complies with IBC Section 1403.9 and IRC Section R703.10. The product may be used on exterior walls of buildings of Type I, II, III and IV construction (IBC).

Description

Hardie® Shingle siding is a single-faced, cellulose fiber-reinforced cement (fiber-cement) product. Hardie® Shingle siding complies with ASTM C1186, as Grade II, Type A; has a flame-spread index of 0 and a smoke-developed index of 5 when tested in accordance with ASTM E84; and is classified as noncombustible when tested in accordance with ASTM E136.

Available Sizes

Product	Width (in)	Height (in)	Thickness (in)
Shingle Panel 5 inch exposure (Straight edge)	48	14	1/4
Shingle Panel 6 inch Exposure (Staggered Edge)	48	15-1/4	1/4
Shingle Panel 7 inch exposure (Straight Edge & Half Round)	48	15-1/4	1/4
Individual shingles 5 inch exposure	3-1/2, 4-1/2, 5-1/2, 7, 8-3/4	14	1/4
Individual shingles 7 inch exposure	4-3/16, 5-1/2, 6-3/4, 7-1/4, 10	15-1/4	1/4

Weight: 2.12 lbs. per square foot

Texture & Finish

Hardie® Shingle siding is available in wood grain texture. Finish options are primed for field paint, or factory finished with ColorPlus® Technology. Color and exposure availability varies by region.

Engineered for Climate®

Hardie® Shingle siding is engineered for performance to specific weather conditions by climate zones as identified by the following map.



SIDING 2: HARDIE SHINGLE SIDING, COLOR TBD  
SIDING 3: HARDIE SHINGLE SIDING, COLOR TBD

HARDIE® TRIM

Manufacturer

James Hardie Building Products Inc.

The products are manufactured at the following locations, which receive regular quality control inspections by ICC-ES.

- Cleburne, Texas
- Plant City, Florida
- Reno, Nevada
- Prattville, Alabama
- Peru, Illinois

For more information about compliances, refer to Intertek Spec ID# 39758.

Features

- Class-A Fire Rated
- Flood Damage Resistant
- Dimensionally Stable
- Resists damage from pests
- Zero Flame Spread
- Engineered for Climate®
- Weather Resistant
- Impact resistant
- Sustainable

Use

Hardie® fiber cement trim is used as an exterior wall accessory. The product complies with 2024 IBC Section 1403.9; 2018, 2021 IBC Section 1403.10; 2012, 2015 IBC Section 1404.10.

Description

Made from durable fiber cement, Hardie® Trim comes in a variety of textures and are available primed and ready for paint, or pre-finished with ColorPlus® Technology, providing the perfect finishing touch to your project. Hardie® Trim complies with ASTM C1186, Type A; and Class A Fire Rated per ASTM E84, with a flame spread index / smoke developed index of less than 0/5.

Engineered for Climate®

Hardie® Trim is engineered for performance to specific weather conditions by climate zones as identified by the following map.

