

Montgomery Planning Upcounty Division

Clarksburg Gateway Sector Plan

Visioning Workshop Introduction

Workshop Agenda

A. Planning Context

B. Group Discussions – three rotations, 25 minutes each

- Connectivity and Mobility
- Community Development, Public Amenities, Historic Preservation
- Environmental Protection, Parkland & Open Space, and Recreation

C. Next Steps and Closing

Project Timeline

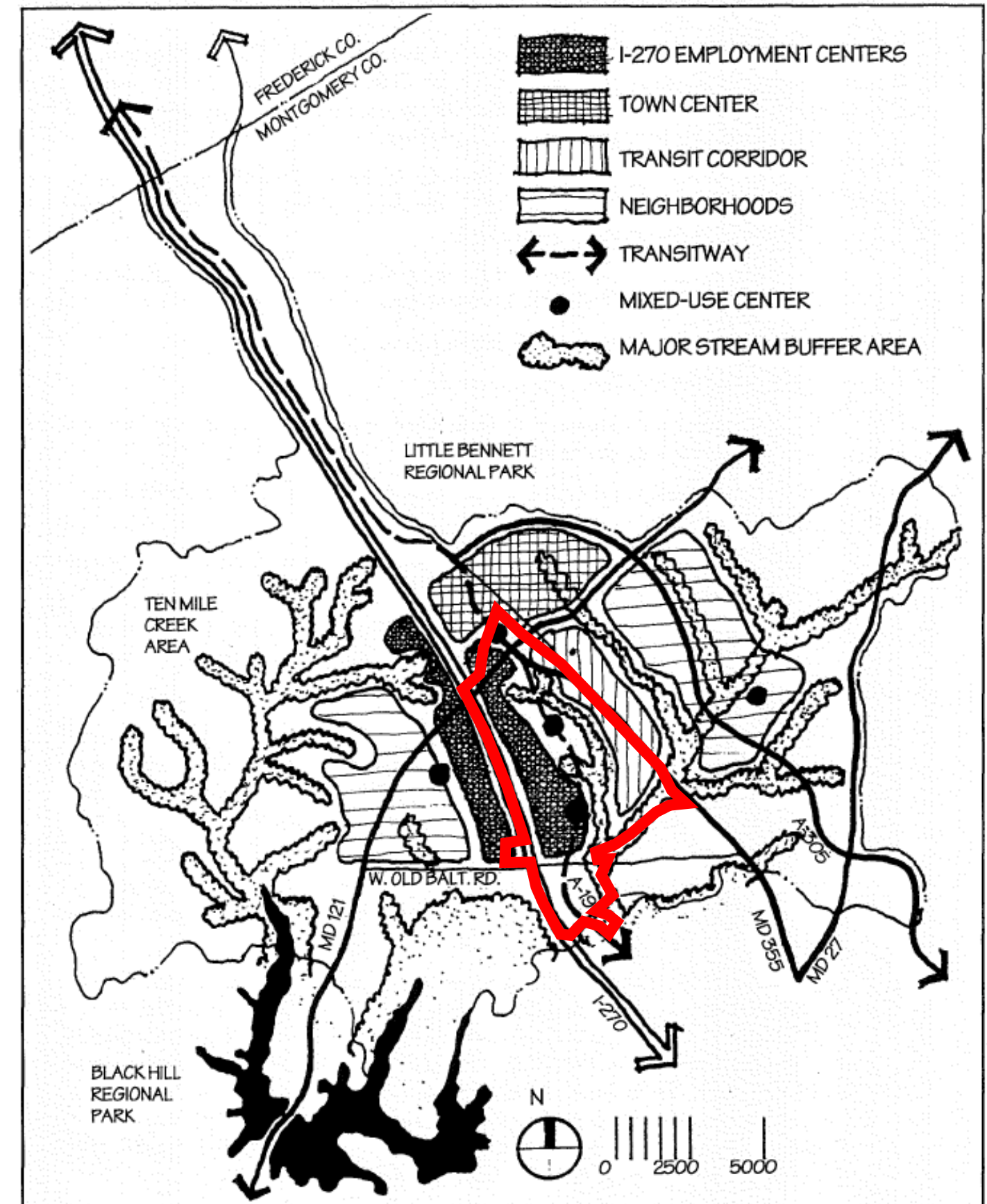
Scope of Work Approved	June 2023
Initial Community Outreach	Summer to Fall 2023
Community Kick-off Meeting	July 26, 2023
Community Listening Sessions	October 2023
Community Feedback Presentation	February 2024
Community Visioning Workshops	May to June 2024 ←
Preliminary Staff Recommendations	Summer 2024
Staff Working Draft Preparation	Fall 2024
Planning Board Review and Recommendation	Winter 2024 to Spring 2025
County Council Actions	Summer to Fall 2025

1994 Clarksburg Master Plan

- Support higher density, mixed-use neighborhoods, clustered in a series of transit- and pedestrian-oriented communities.
- Provide for interconnected, multi-modal streets linking transit stations, shopping, civic spaces, and residences.
- Emphasize I-270 high-technology corridor, with key sites preserved for existing and future employment opportunities.
- Stage development responsive to fiscal, community building, and environmental objectives.
- Preserve farmland in western Ten Mile Creek area.

Proposed Concept Plan for Clarksburg

Figure 4



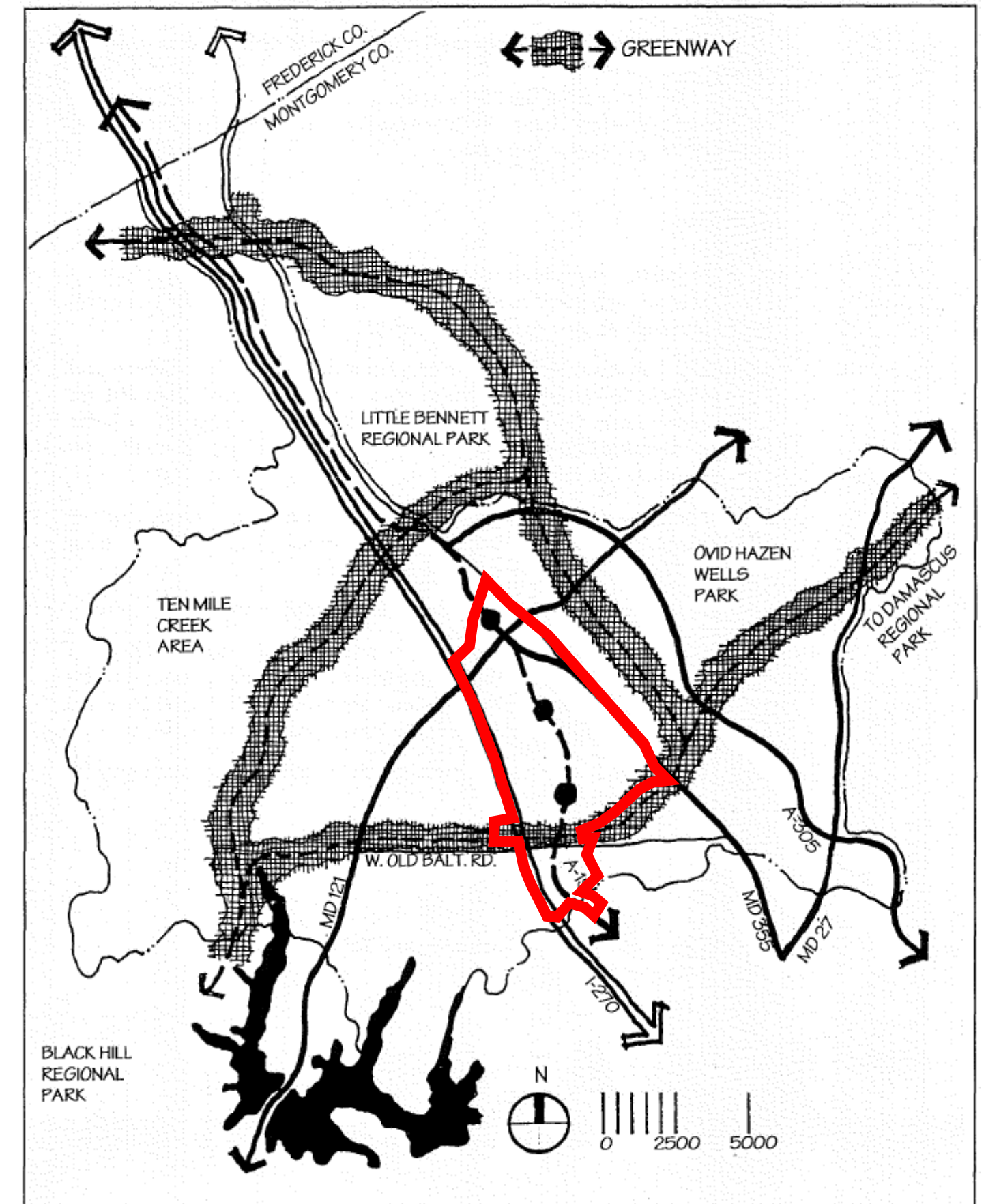
1994 Clarksburg Master Plan Policies

Environment

- Protect natural features, particularly along Ten Mile Creek and Little Seneca Creek, as development proceeds
- Establish a multi-purpose greenway system along stream valleys

Greenway Network

Figure 9



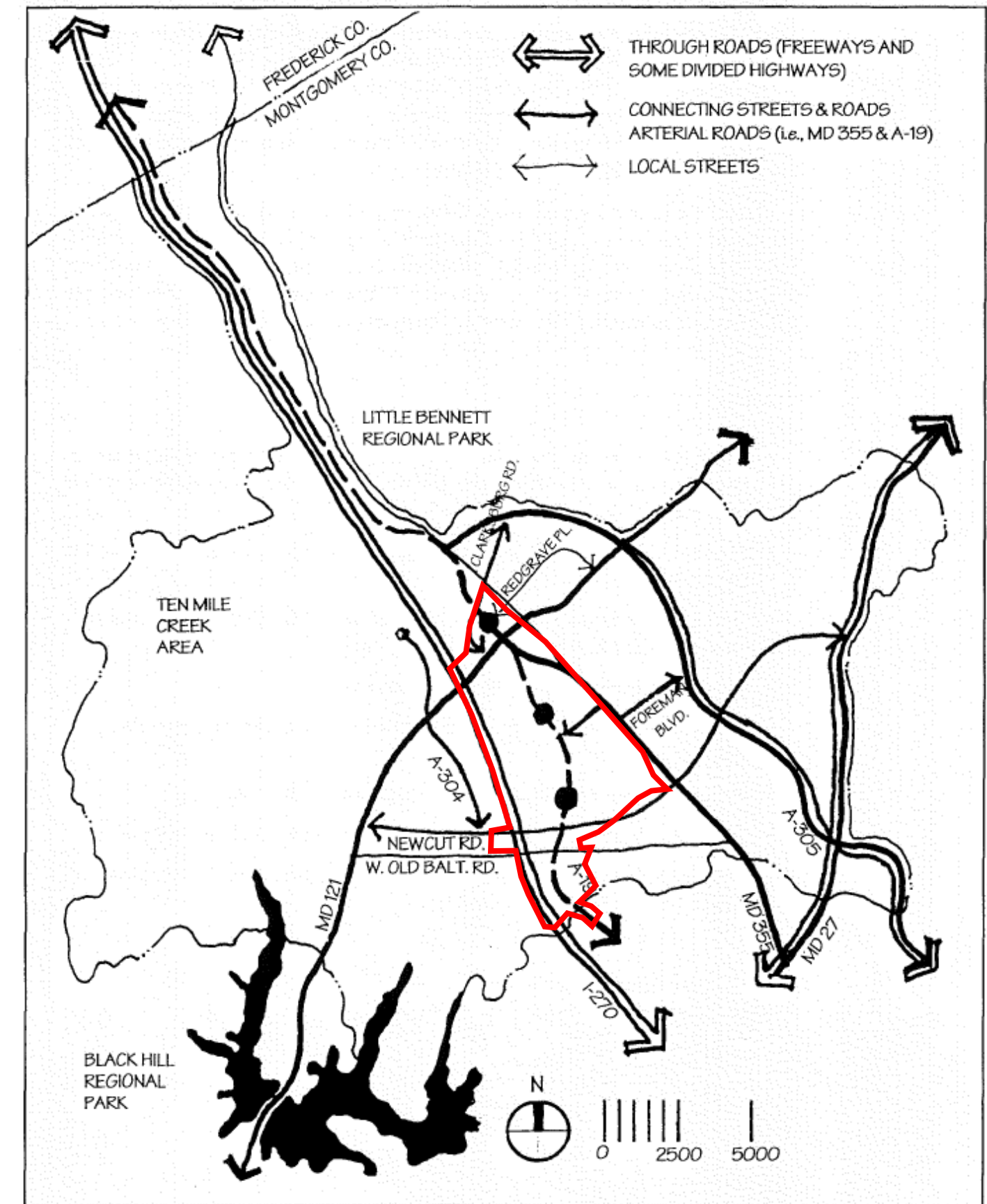
1994 Clarksburg Master Plan Policies

Transportation

- Transitway network connecting Shady Grove and Frederick
- Observation Drive (A-19) and transitway
- Little Seneca Parkway (“Newcut Road”)
- MD 355 (Frederick Road) ‘bypass’
- I-270 interchange at Little Seneca Parkway
- Transit service to Boyds MARC Rail Station

Hierarchy of Roads and Streets

Figure 11



Thrive Montgomery 2050

- Montgomery County's General Plan
- Long-range vision for future growth, community character, and preservation in the county.
- Thrive Montgomery 2050 guides:
 - Countywide policies
 - Future master plans
 - Infrastructure planning
 - Community amenities
 - Private development



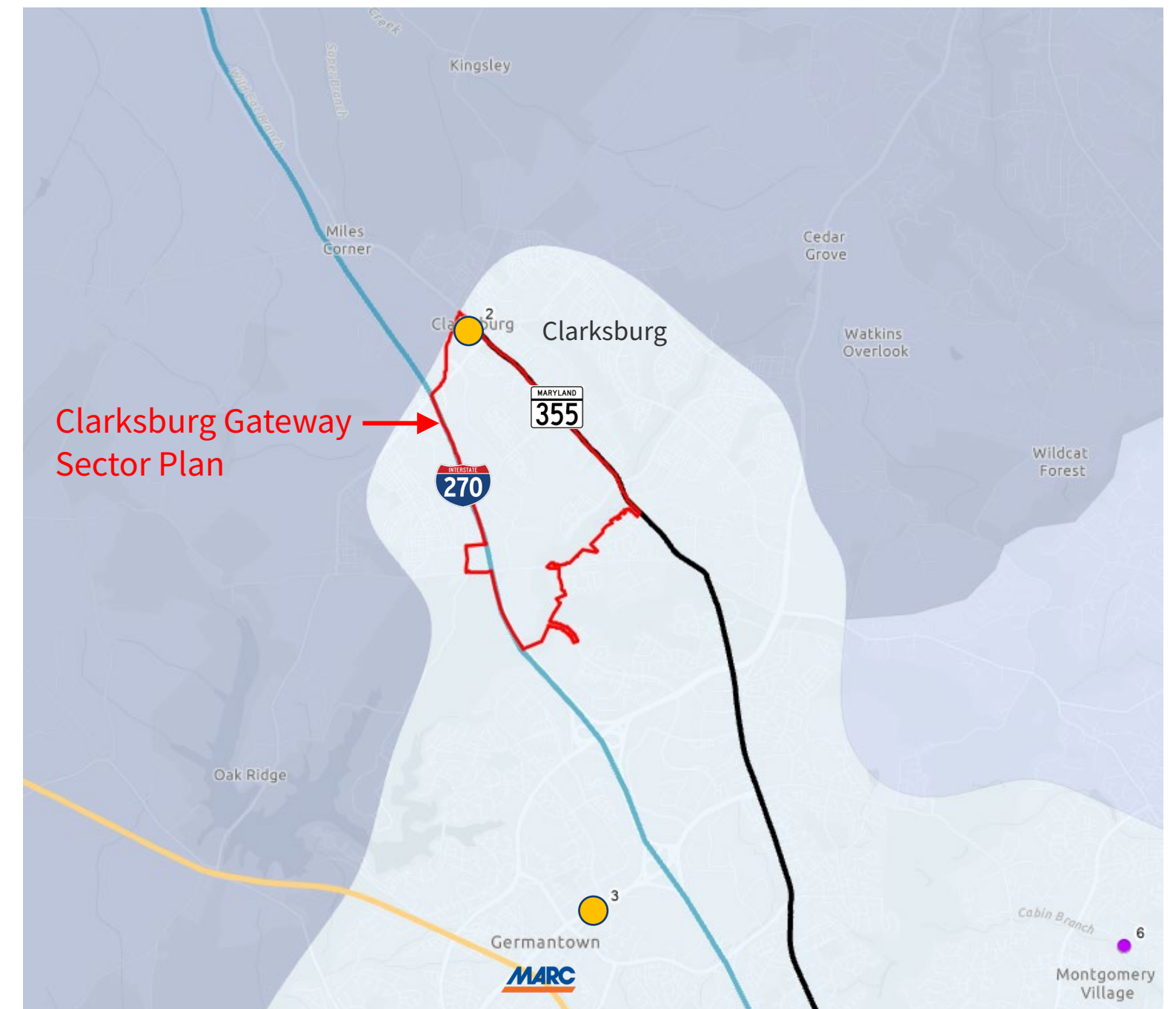
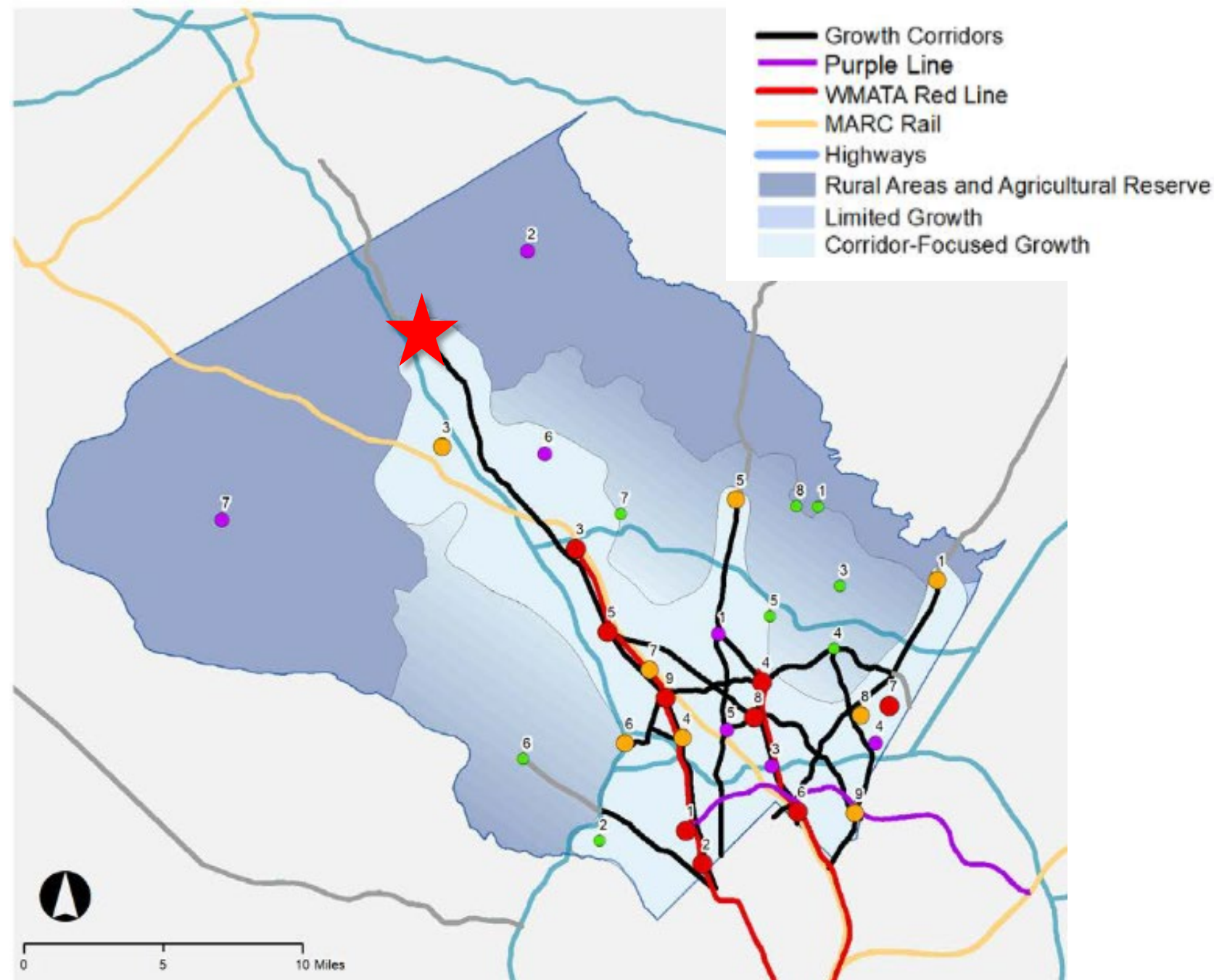
THRIVE
MONTGOMERY 2050
Let's Plan Our Future. Together





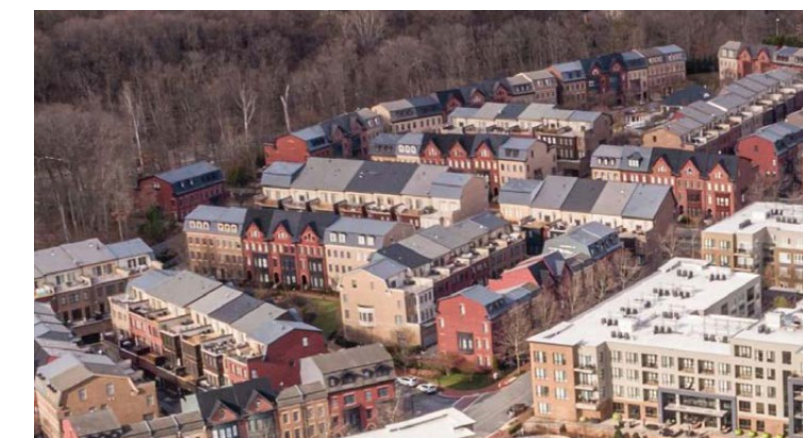
Thrive 2050 Major Themes

Thrive 2050 Growth Policy Map



Compact Growth Policies

- Concentrate growth in centers of activity and along corridors through **compact, infill development and redevelopment** to maximize efficient use of land.
- Promote and prioritize **public investment in infrastructure** in activity centers and along growth corridors and leverage it to attract future private investment in a compact form.



Complete Communities Policies

- Identify and integrate elements needed to complete centers of housing, retail, and office development and plan to make **15-minute living** a reality for as many people as possible.
- **Retrofit centers of activity and large-scale older facilities** such as shopping centers, abandoned federal campuses, office parks, and other single-use developments to include a mixture of uses and diversity of housing types.



Design, Arts, and Culture Policies

- Use design-based tools to **create attractive places** with lasting value that encourage **social interaction** and reinforce a **sense of place and inclusion**.
- Promote design strategies and retrofits to make new and existing buildings more **sustainable and resilient to disruption and change**.
- Support arts and cultural institutions and programming to educate, connect and build communities that celebrate our **diversity and strengthen pride of place**.



Transportation and Communication Networks Policies

- Develop a safe, comfortable, and appealing network for **walking, biking, and rolling.**
- Build a frequent, fast, convenient, reliable, safe, and accessible **transit system.**



Housing For All Policies

- Encourage the production of **more housing** to better match supply with demand
- Plan for a wide range of **housing types and sizes** to meet diverse needs
- Promote **racial and economic diversity and equity** in housing in every neighborhood



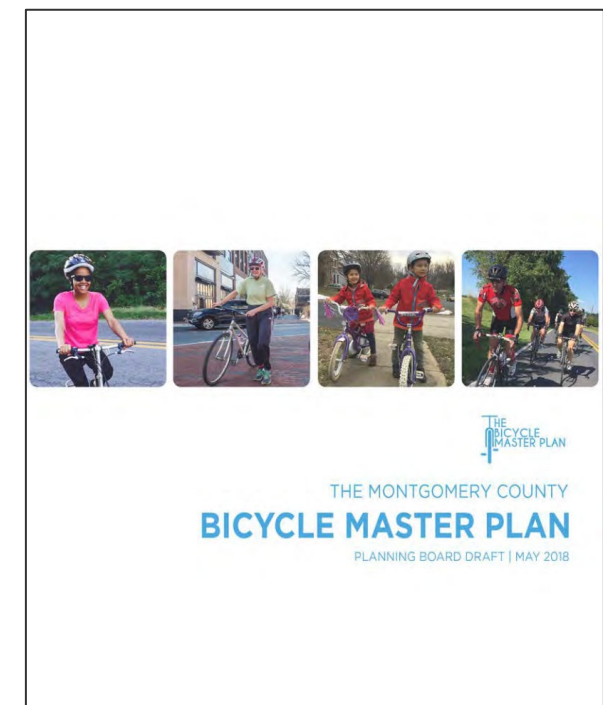
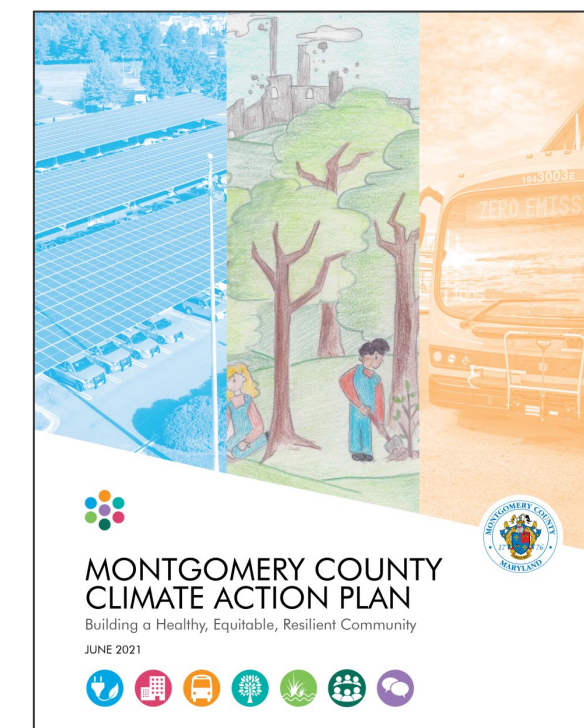
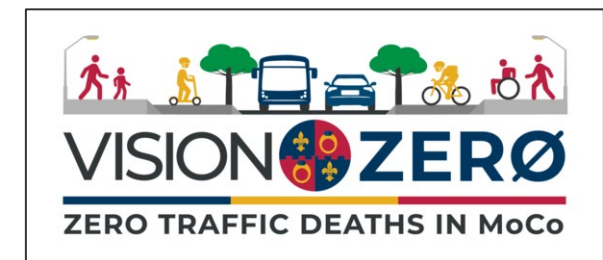
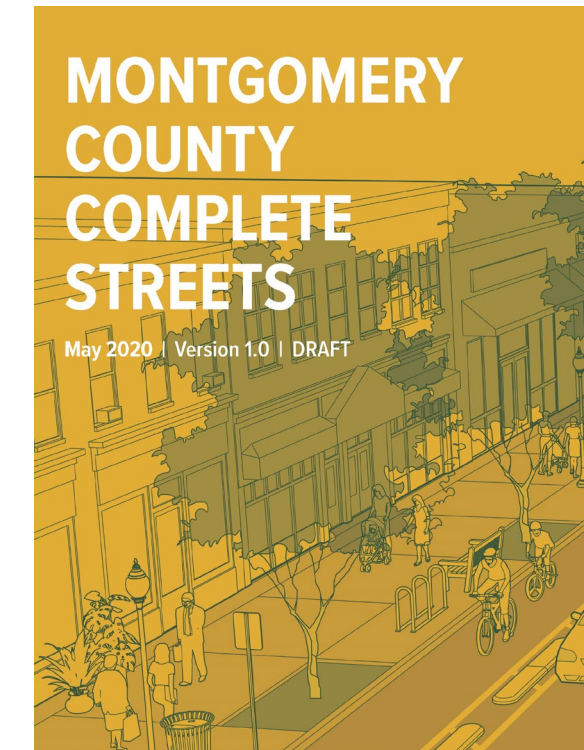
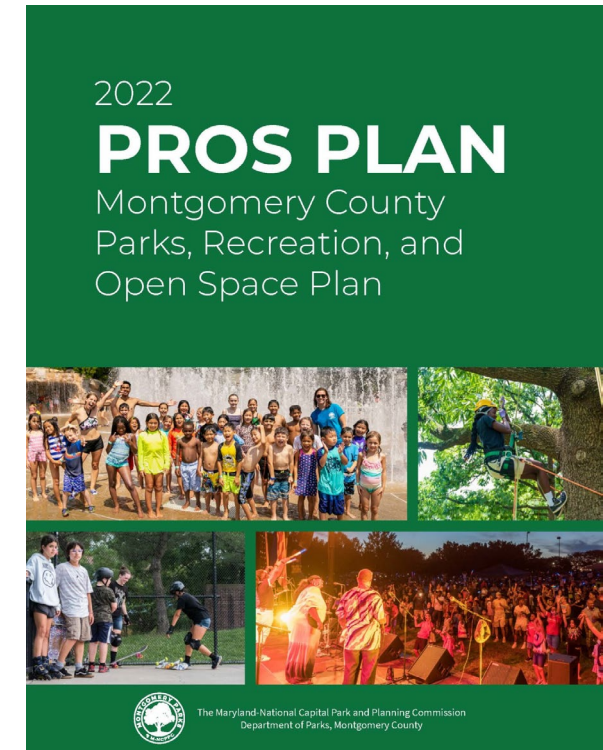
Parks and Recreation Policies

- Focus on creating **high quality urban parks and recreation facilities** that promote active lifestyles and social connections.
- Integrate parks/rec/public spaces into **economic development strategies and land use planning** to attract employers and workers, build social connections, encourage healthy lifestyles, and create vibrant places.



Other Countywide Policies

- Corridor Forward: The I-270 Transit Plan
- Master Plan of Highways and Transitways
- Complete Streets Design Guidelines
- Bicycle and Pedestrian Master Plans
- Vision Zero initiative
- Parks, Recreation, and Open Space Master Plan
- Racial Equity and Social Justice Law
- Climate Action Plan



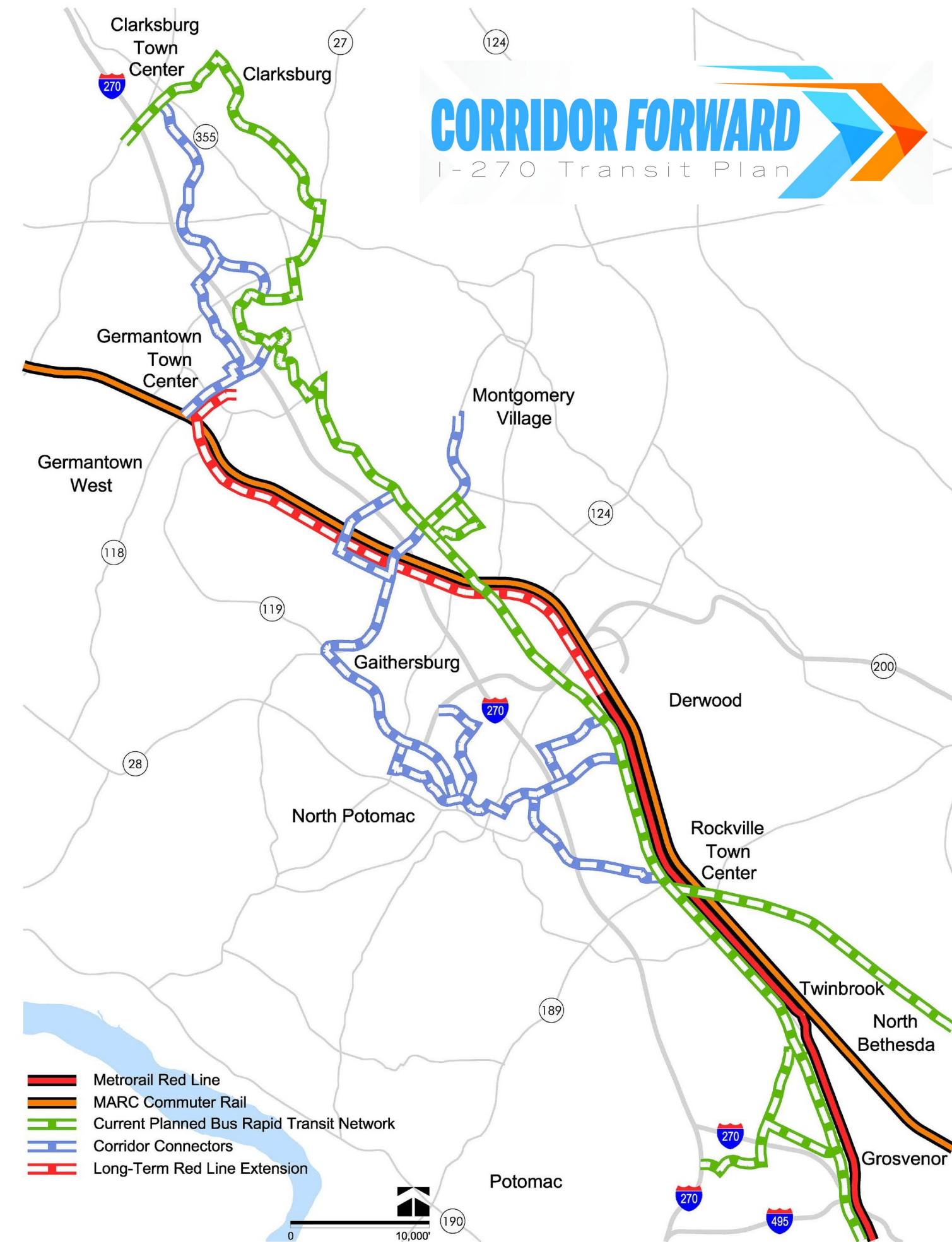
Corridor Forward: The I-270 Transit Plan

Near-Term Transit Network

- Build MD 355 & Veirs Mill Road Bus Rapid Transit (BRT)
- Re-envision Corridor Cities Transitway (CCT) as a network of dedicated bus lanes, Corridor Connectors
- Establish commuter buses on I-270

Long-Term Transit Network

- Extend Metrorail Red Line to Germantown Town Center
- Enhance MARC Rail Brunswick Line service and add stations at Shady Grove and White Flint



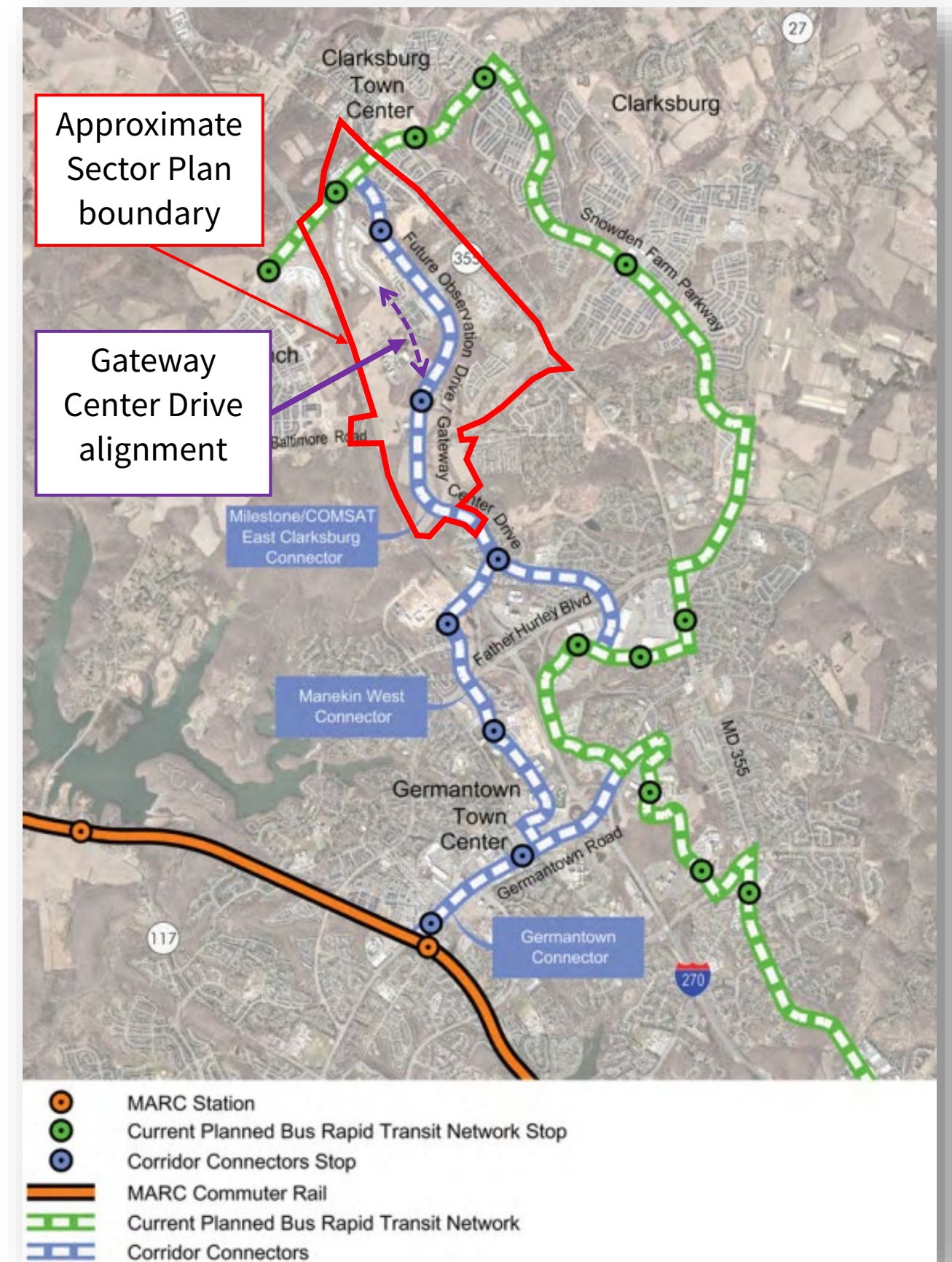
Corridor Forward: The I-270 Transit Plan

Near-Term Transit Network

- Build MD 355 & Veirs Mill Road Bus Rapid Transit (BRT)
- Re-envision Corridor Cities Transitway (CCT) as a network of dedicated bus lanes, Corridor Connectors
- Establish commuter buses on I-270

Long-Term Transit Network

- Extend Metrorail Red Line to Germantown Town Center
- Enhance MARC Rail Brunswick Line service and add stations at Shady Grove and White Flint





Group Discussions

- **Topic Rotation #1** – 25 min.
Break/facilitator transition – 5 min.
- **Topic Rotation #2** – 25 min.
Break/facilitator transition – 5 min.
- **Topic Rotation #3** – 25 min.

Discussion Topics

- Transportation Mobility & Connectivity
- Community Development, Public Amenities, & Historic Preservation
- Environment, Parkland, Open Space, & Recreation

Group Discussion Topics

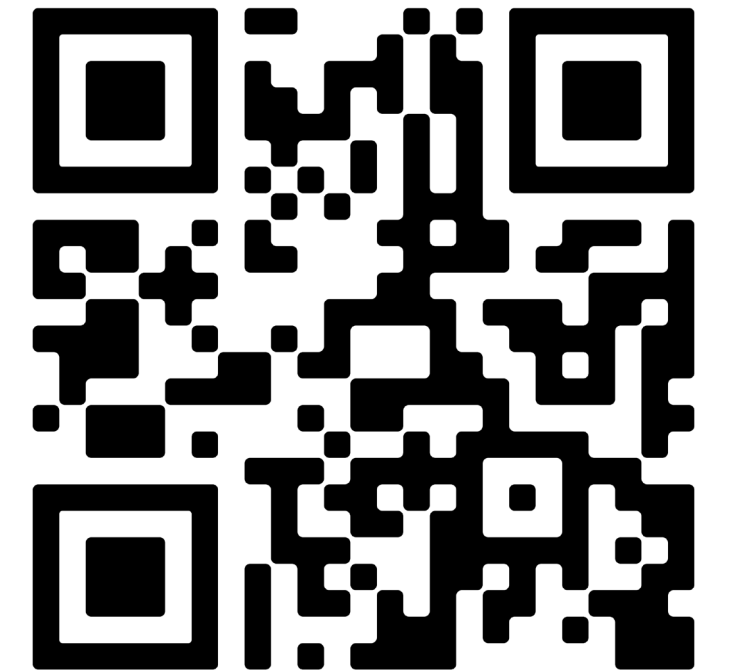
- **Transportation Mobility & Connectivity**
e.g., transitways, sidewalks, road connections, bike paths
- **Community Development, Public Amenities, & Historic Preservation**
e.g., residential and non-residential density, schools, historic designation
- **Environment, Parkland, Open Space, & Recreation**
e.g., water quality, stream valley protection, greenways, parkland, recreation center

Stay in touch!



Visit our website at www.montgomeryplanning.org/cgsp

- Follow the progress of the plan update
- Subscribe to our Clarksburg community newsletter
- View upcoming and past meetings and published materials



Contact the project manager, Clark Larson, at

clark.larson@montgomeryplanning.org or 301-495-1331