

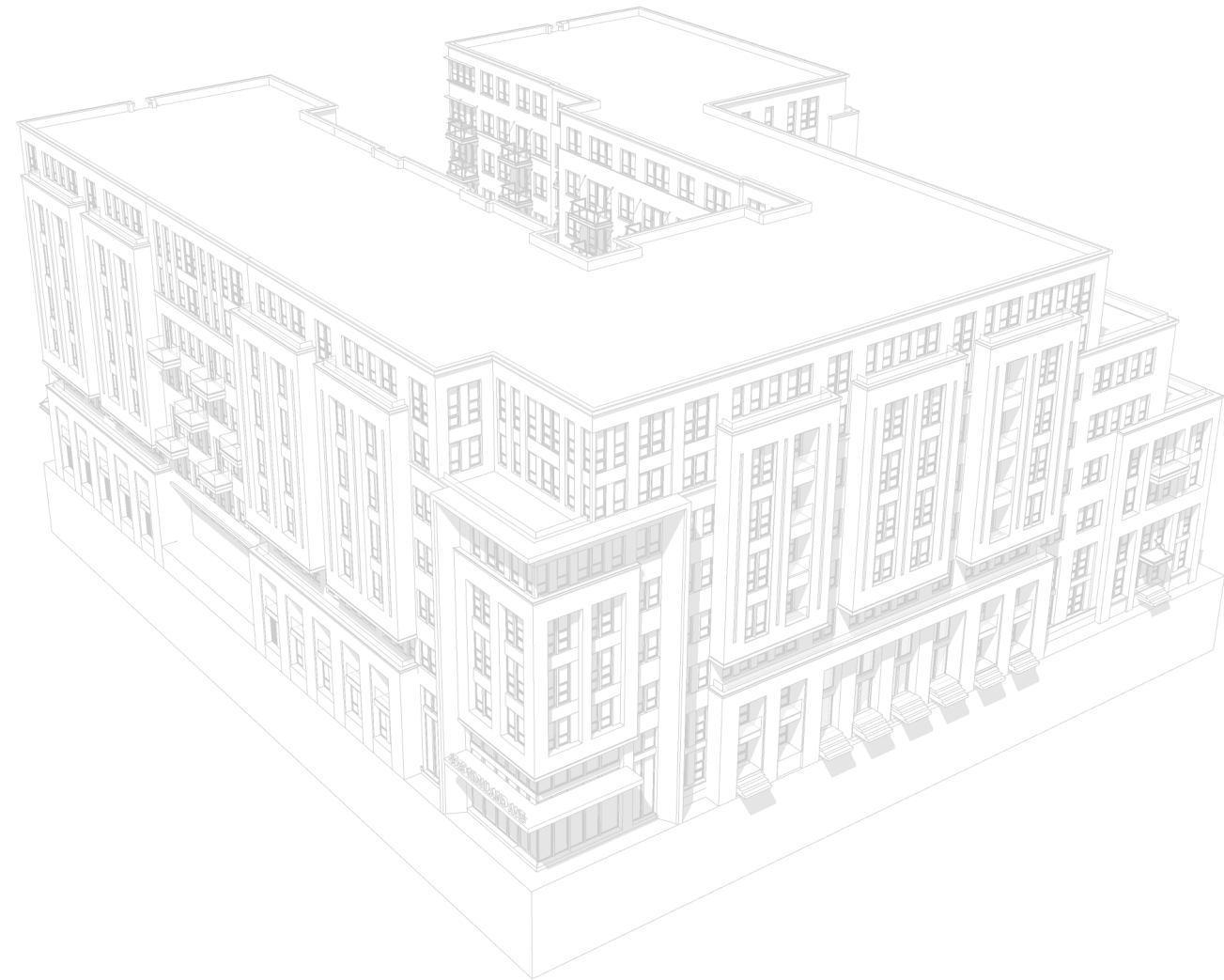


Sketch Plan DAP Submission

LOT 25 - BETHESDA, MD
Wisconsin Ave, Bethesda, MD
January 24th, 2024

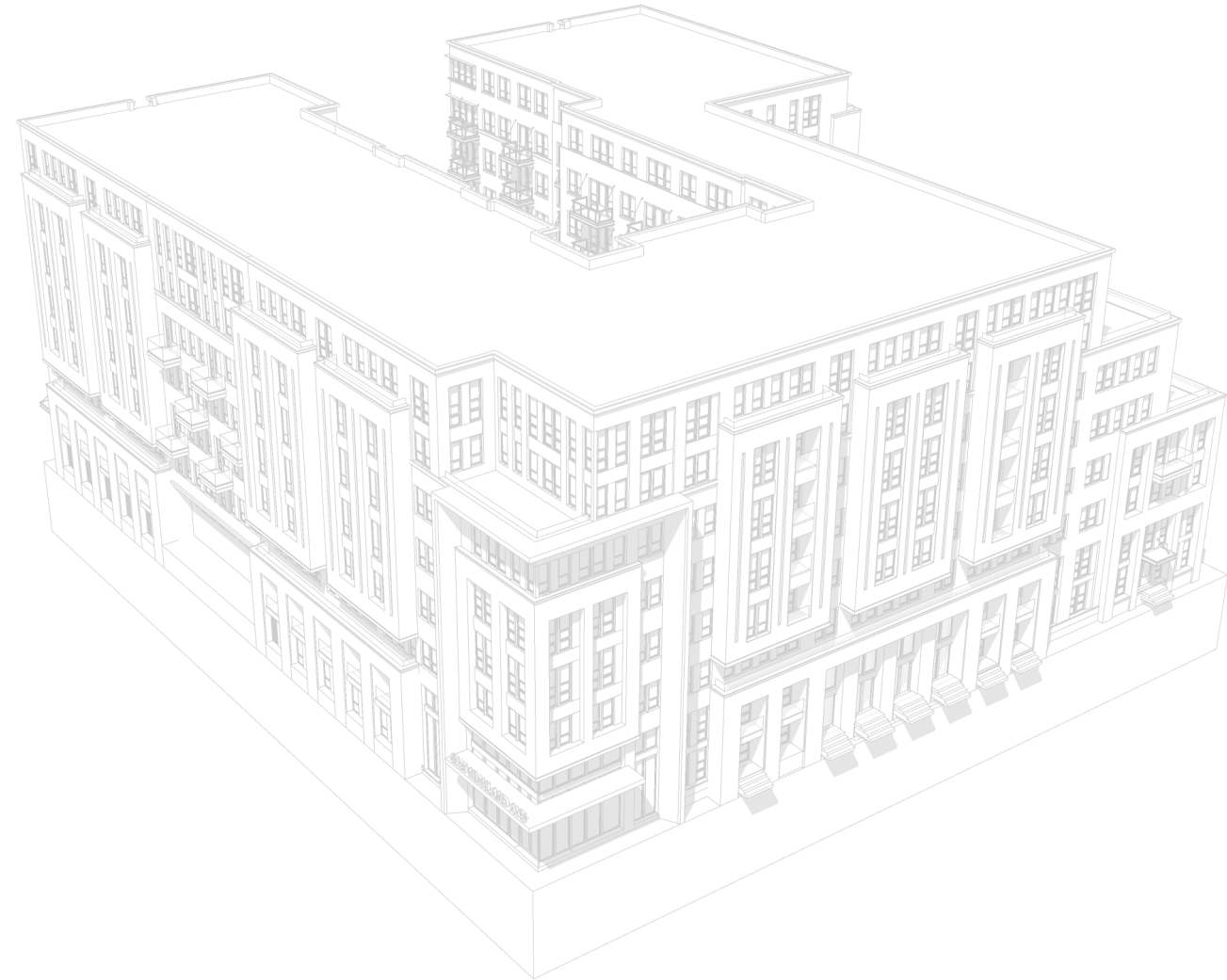
TABLE OF CONTENTS

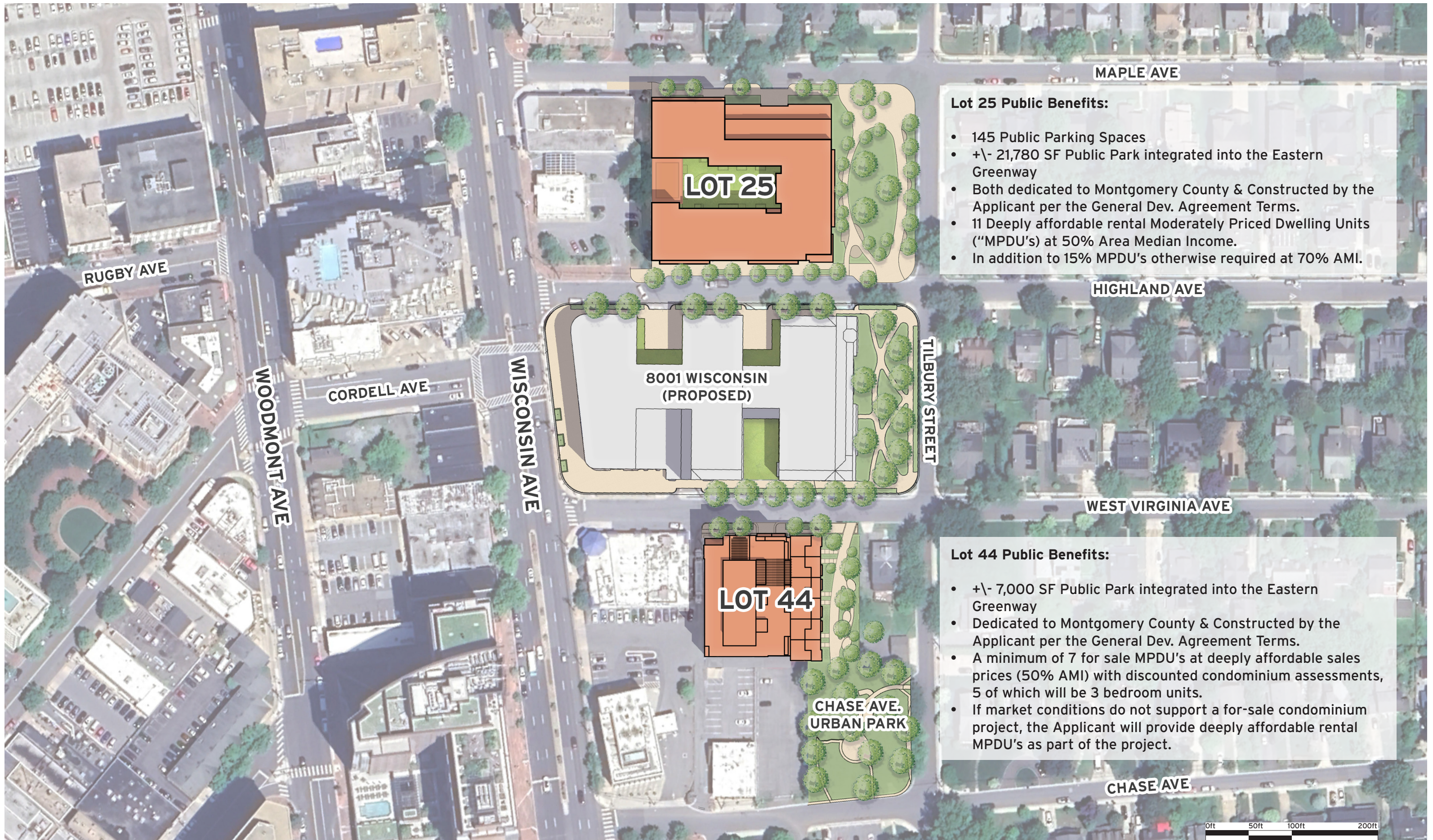
1	Cover Sheet
2	Table of Contents
3	Major Changes
4	Vicinity Map
5	Regional Aerial View
6	Wisconsin Corridor & Eastern Greenway
7	Existing Context
8 - 11	Landscape Concept Design
12	Setback Diagram
13 - 17	Building Floor Plans
18 - 19	Building Section
20 - 22	Precedents
23 - 32	Renderings



MAJOR CHANGES

- 1 - Extended the Lobby/ Amenity Space to face the greenway park.
- 2 - Eliminated the 'bridge' element on Highland Ave.
- 3 - Created a visual connection between the courtyard and the park by way of new lobby layout.





Lot 25 Public Benefits:

- 145 Public Parking Spaces
- +/- 21,780 SF Public Park integrated into the Eastern Greenway
- Both dedicated to Montgomery County & Constructed by the Applicant per the General Dev. Agreement Terms.
- 11 Deeply affordable rental Moderately Priced Dwelling Units ("MPDU's) at 50% Area Median Income.
- In addition to 15% MPDU's otherwise required at 70% AMI.

Lot 44 Public Benefits:

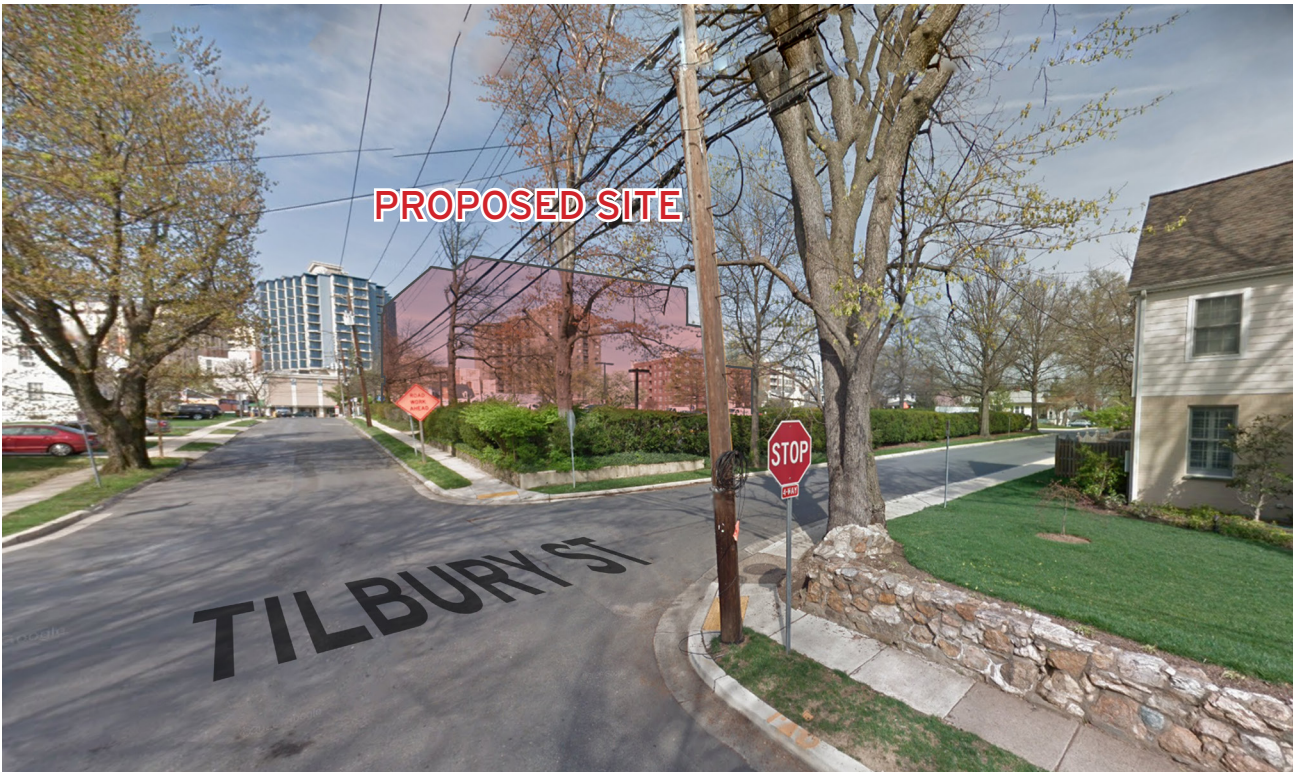
- +/- 7,000 SF Public Park integrated into the Eastern Greenway
- Dedicated to Montgomery County & Constructed by the Applicant per the General Dev. Agreement Terms.
- A minimum of 7 for sale MPDU's at deeply affordable sales prices (50% AMI) with discounted condominium assessments, 5 of which will be 3 bedroom units.
- If market conditions do not support a for-sale condominium project, the Applicant will provide deeply affordable rental MPDU's as part of the project.







VIEW LOOKING NORTH ON WISCONSIN AVE.



VIEW LOOKING WEST ON HIGHLAND AVE.



VIEW LOOKING SOUTH ON WISCONSIN AVE.



VIEW LOOKING SOUTH ON TILBURY ST.

Old Georgetown Road, Wellington Drive, Bethesda-Chevy Chase East, Chase Avenue, Eastern Greenway, Cheltenham, Western Edge, Elm Street, Caroline Freeland

For more information on each park description, see the Bethesda Downtown Sector Plan – 2.7 Parks and Open Space.

Intent

Formally planned, flexible open spaces for:

- Informal gathering
- Lunchtime relaxation
- Small special event gatherings
- Walk-to recreation

Key Features

- Lawn area
- Shaded seating
- Play area
- Optional: a skate spot, a community garden, or similar neighborhood serving amenities

Size - ¼ acre minimum, ½ acre ideal

Experiences - ensure a mix of uses

- Active
- Contemplative
- Social gathering/community building



Lakelands Clubhouse Park - lawn area with flexible uses central to the community and highly used all year round, Lakelands, MD. Source: M-NCPPC

Relationship to Adjacent Uses (context)

- Located in the center of residential developments
- Within walking distance of residents

Site Access and Connectivity/ Social Equity

- Ensure physical and visual connections from street
- Ensure safe pedestrian crossings
- Ensure access to all
- Promote diversity

Special Features

- Picnic areas
- Play features and small game spaces
- Open lawns
- Neighborhood serving amenities, neighborhood identity features
- Wayfinding, signage, interpretative features

Frequency of Use

- Seasonal Events
- Weekly Functions
- Daily Functions

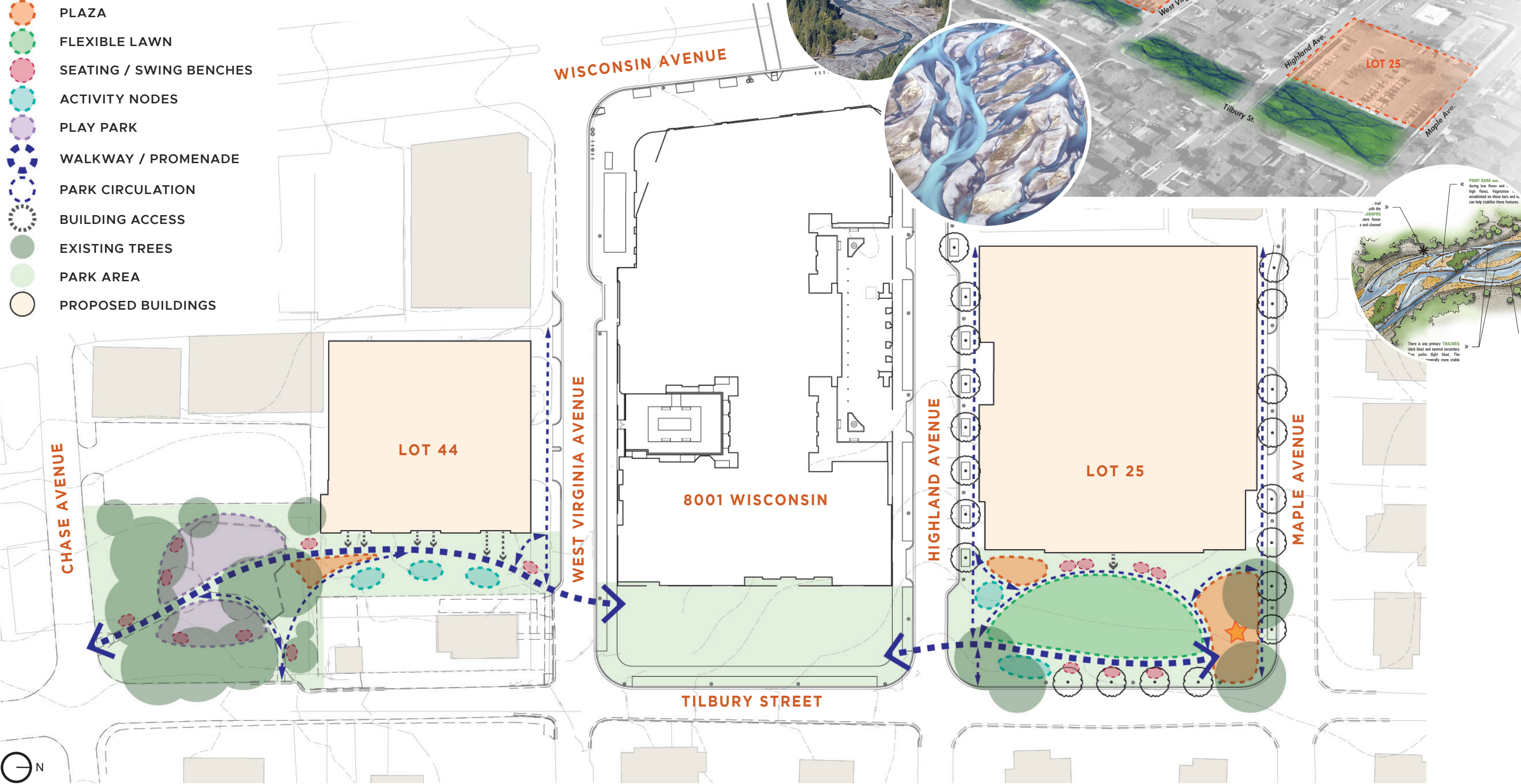


Greater Kennedy Plaza - KidInfo Play in the park with games, activities, and a free-play mobile playground. Providence, RI. Source: Downtown Providence Park Conservancy

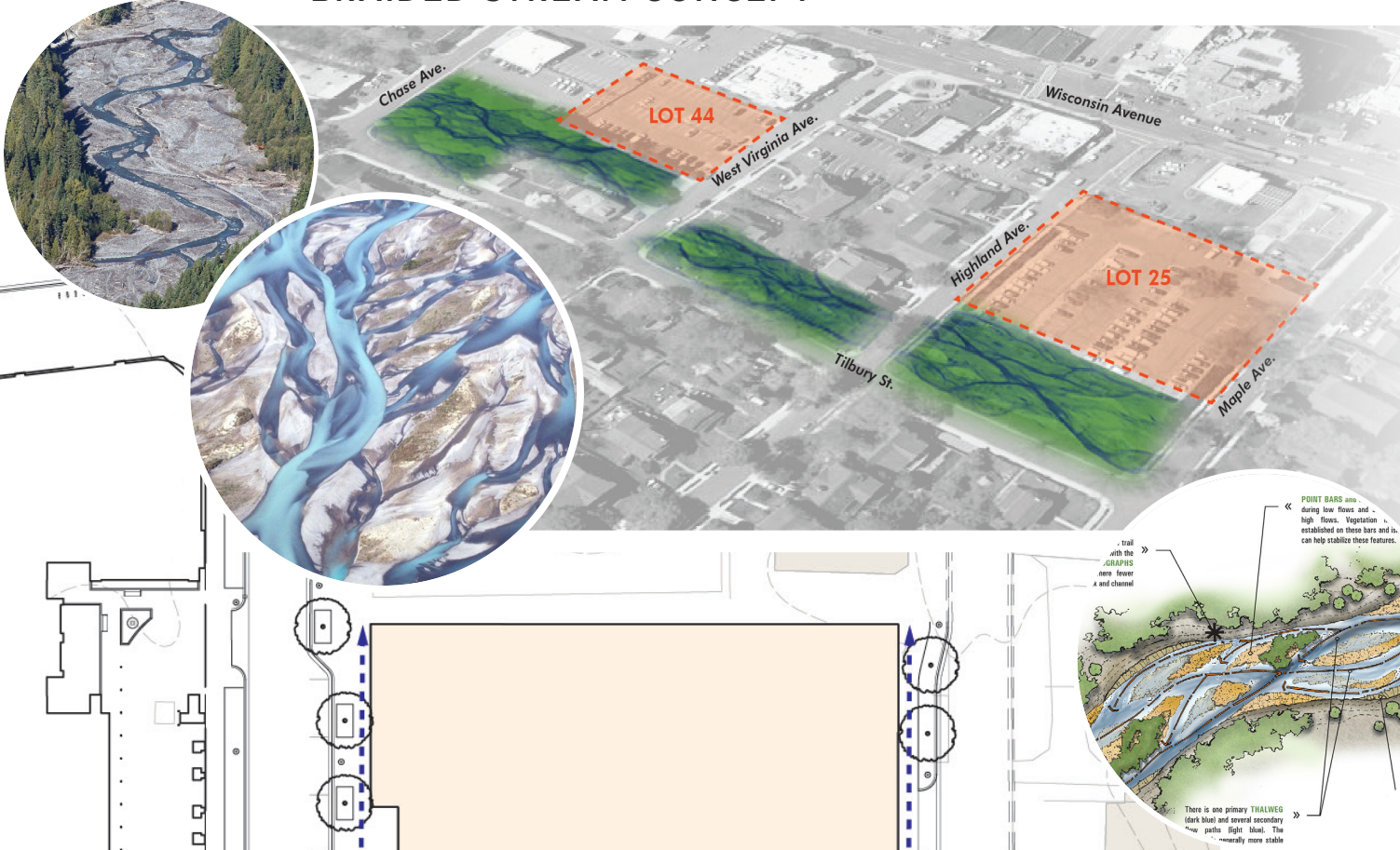


BETHESDA DOWNTOWN PLAN EASTERN GREENWAY
CONCEPT BUBBLE DIAGRAM

- LEGEND
- PLAZA
 - FLEXIBLE LAWN
 - SEATING / SWING BENCHES
 - ACTIVITY NODES
 - PLAY PARK
 - WALKWAY / PROMENADE
 - PARK CIRCULATION
 - BUILDING ACCESS
 - EXISTING TREES
 - PARK AREA
 - PROPOSED BUILDINGS



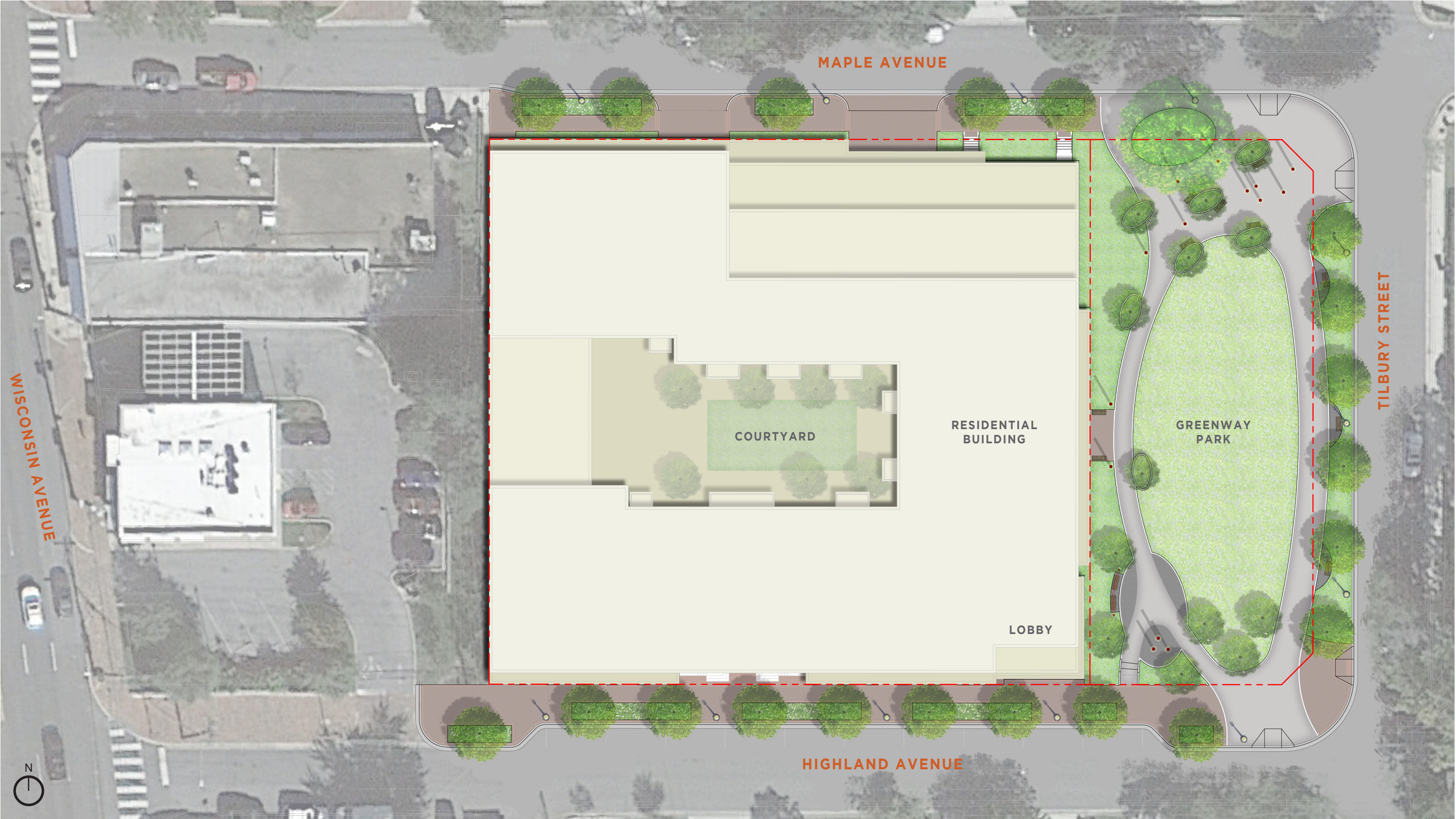
BRAIDED STREAM CONCEPT

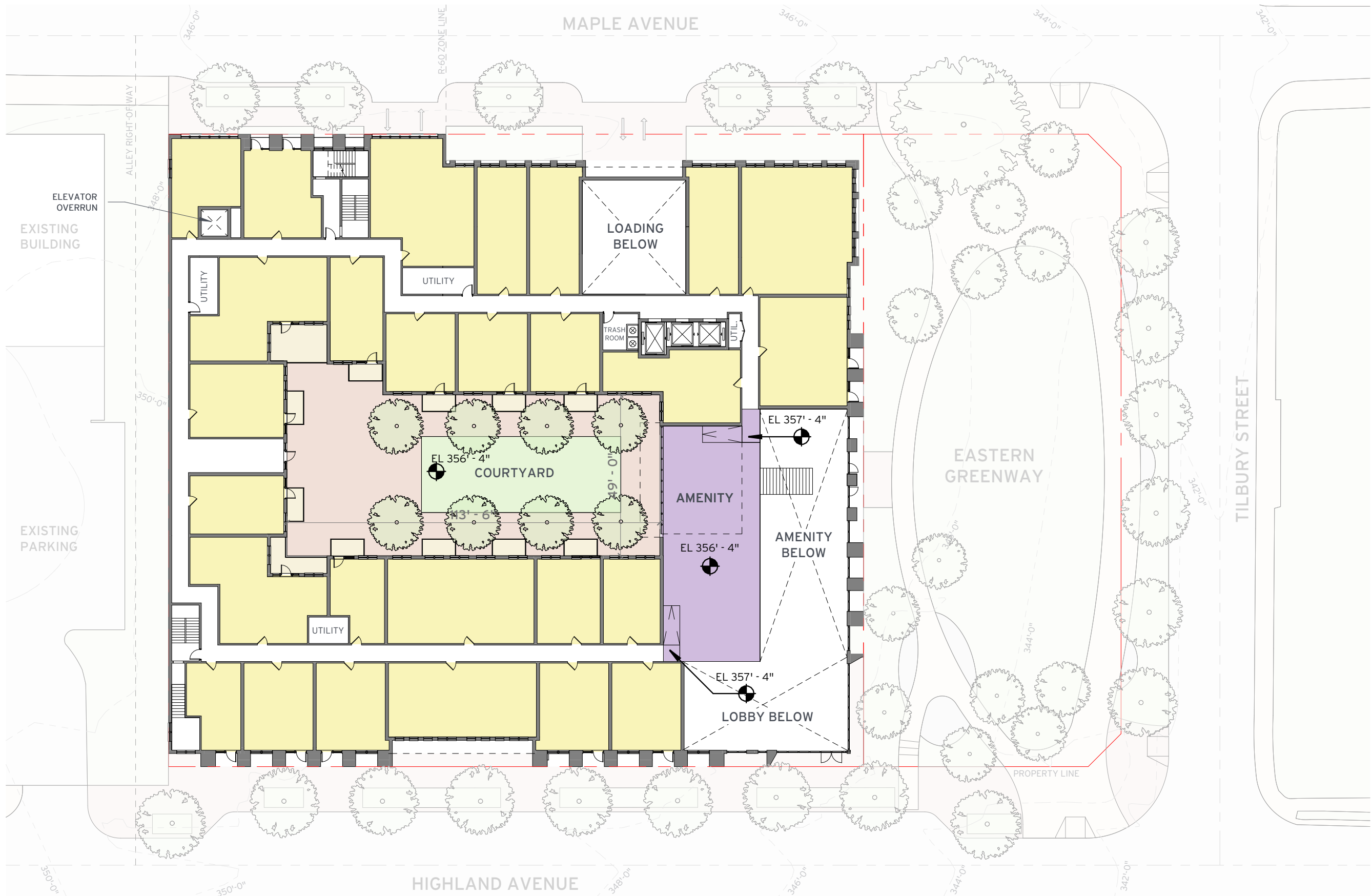


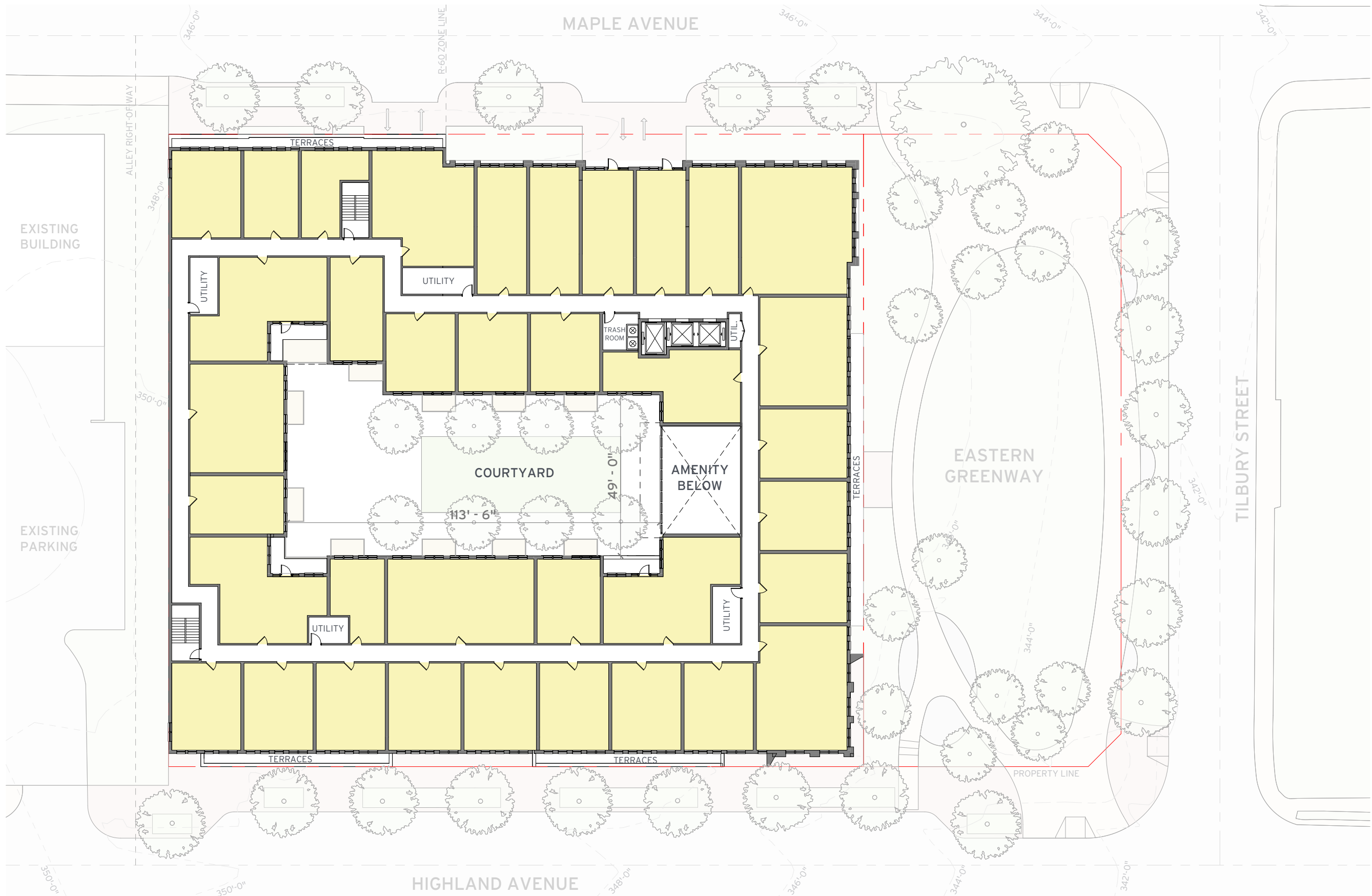
BETHESDA DOWNTOWN PLAN EASTERN GREENWAY NORTH
PRECEDENTS

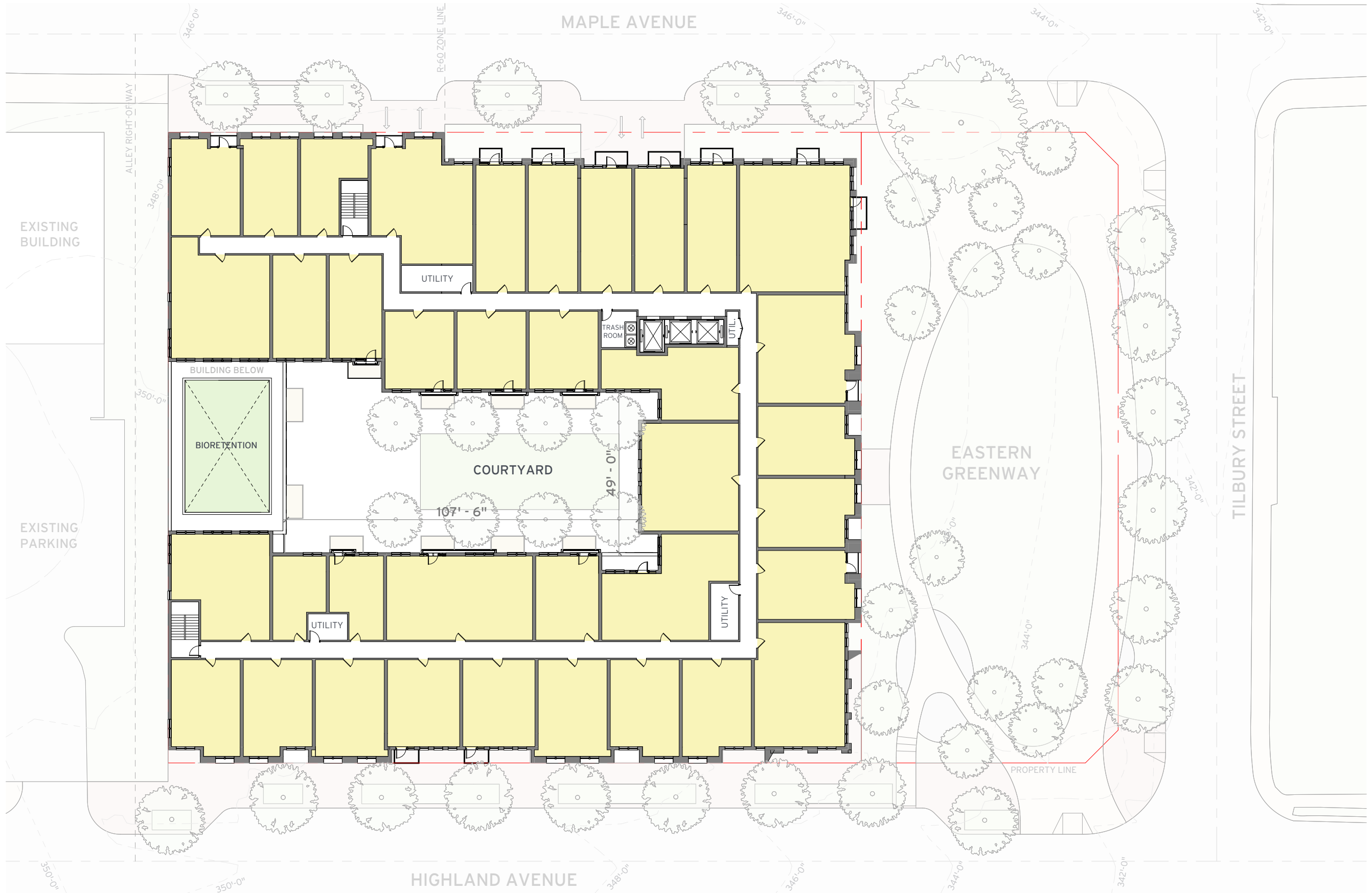


BETHESDA DOWNTOWN PLAN EASTERN GREENWAY NORTH
CONCEPT PLAN RENDERING





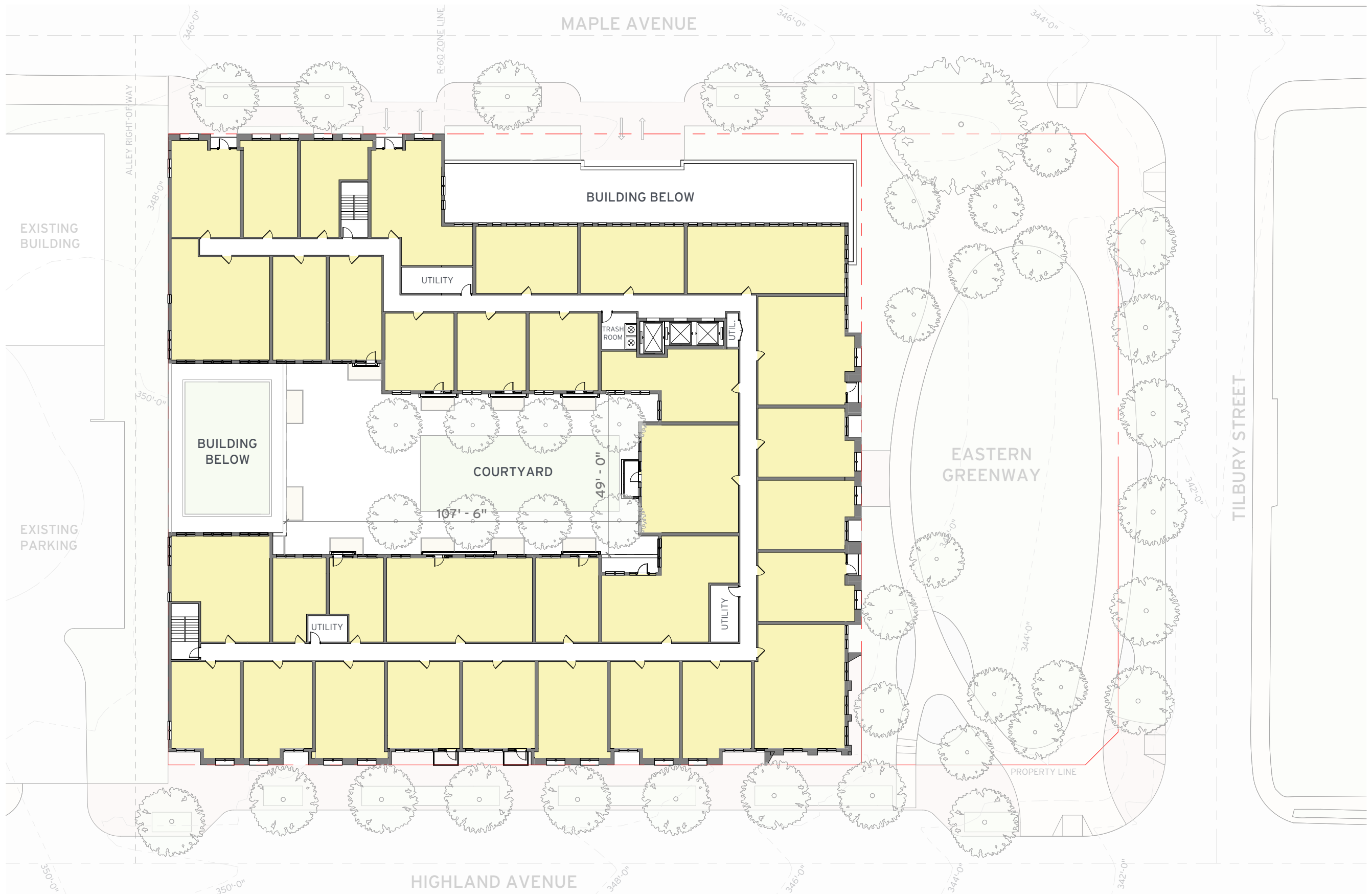


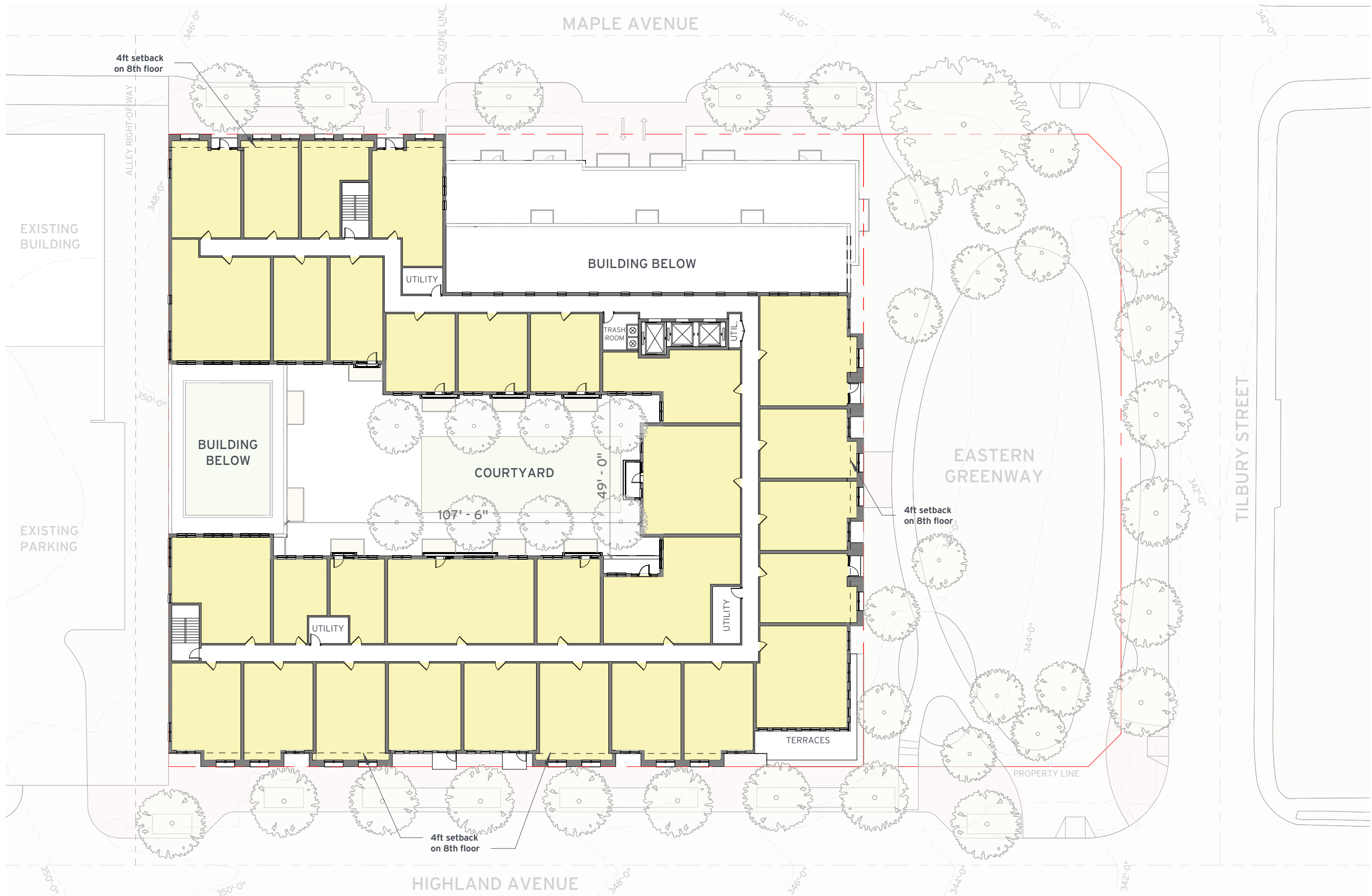


GRAPHIC SCALE 1" = 30'-0"

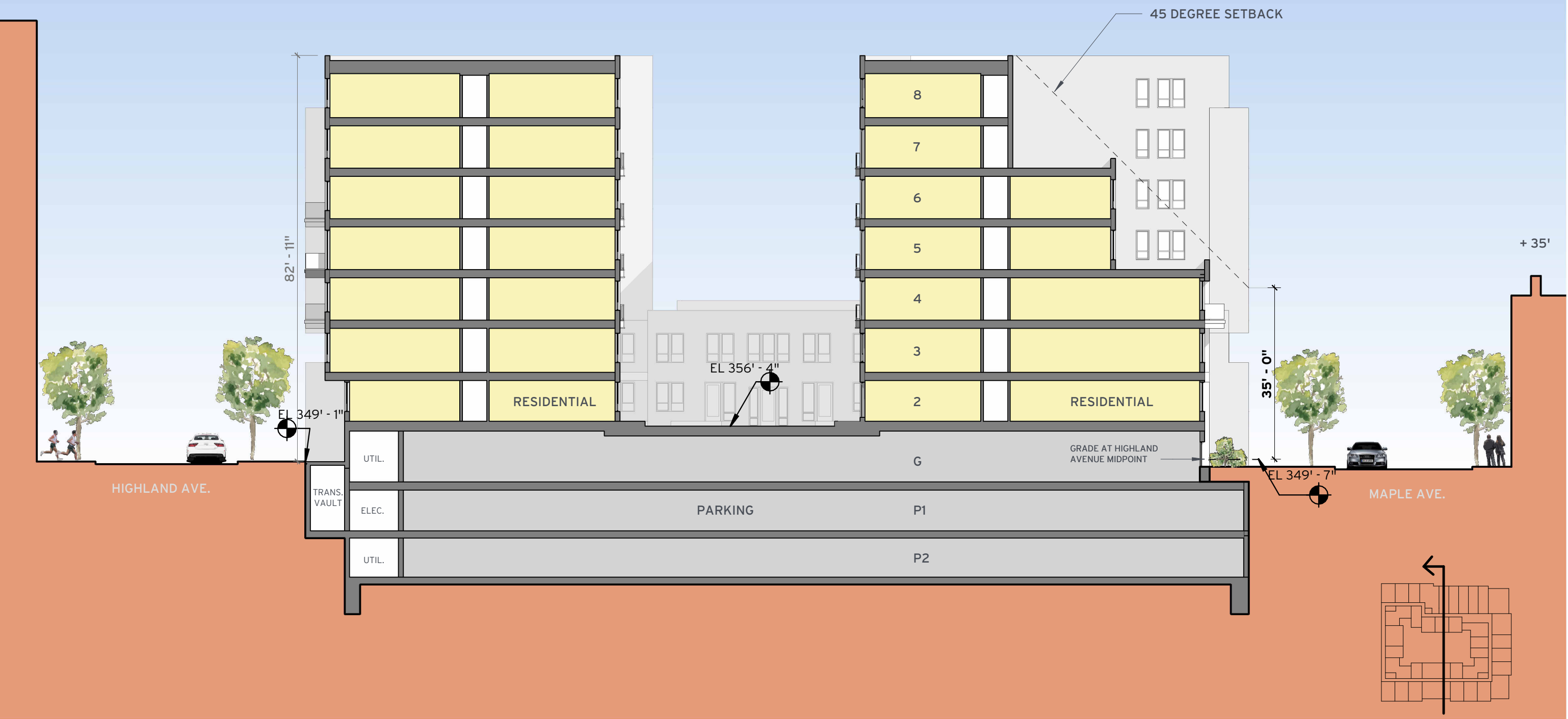
0 15' 30' 60' 120'







+ 90'







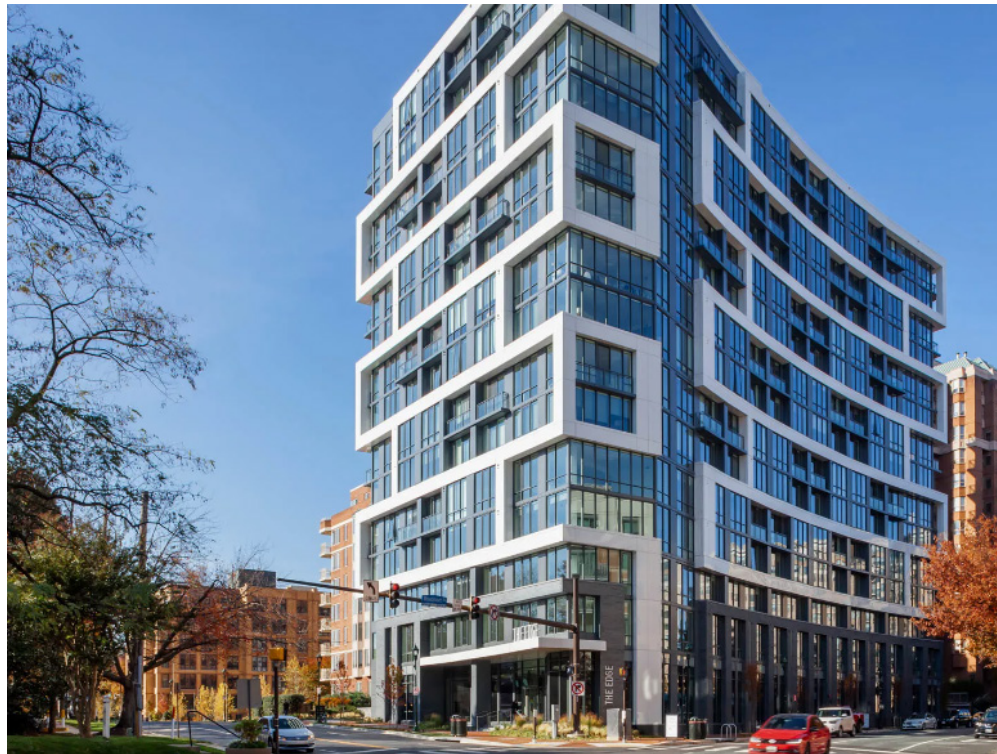
7501 WISCONSIN AVE



8001 WOODMONT AVE



8001 WISCONSIN AVE



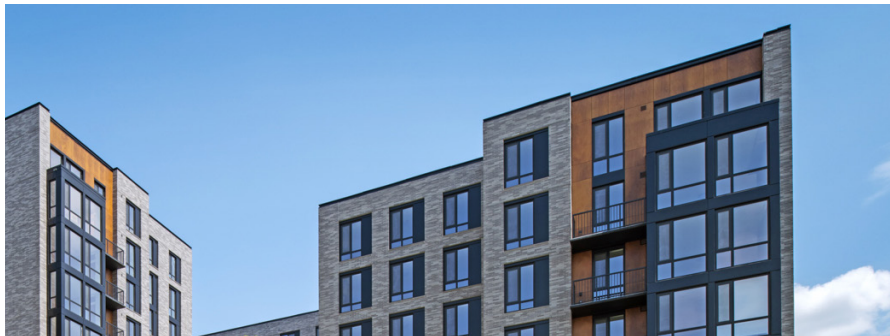
4885 EDMOOR LANE



8300 WISCONSIN AVE



7750 WISCONSIN AVE

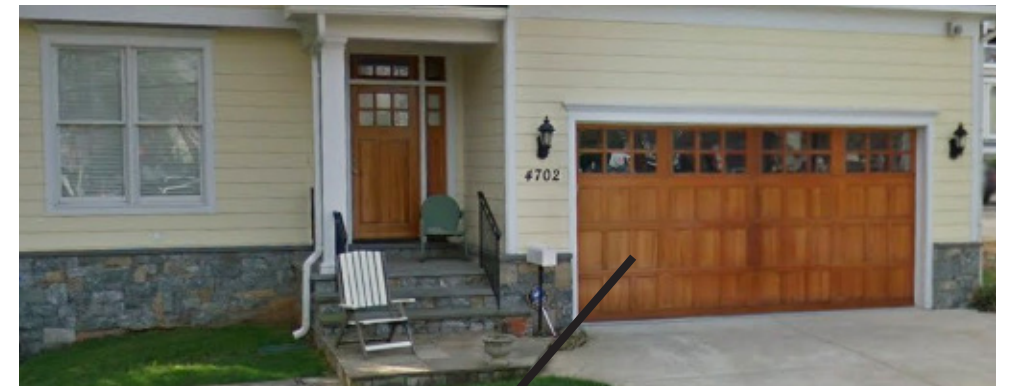




WARM STONE



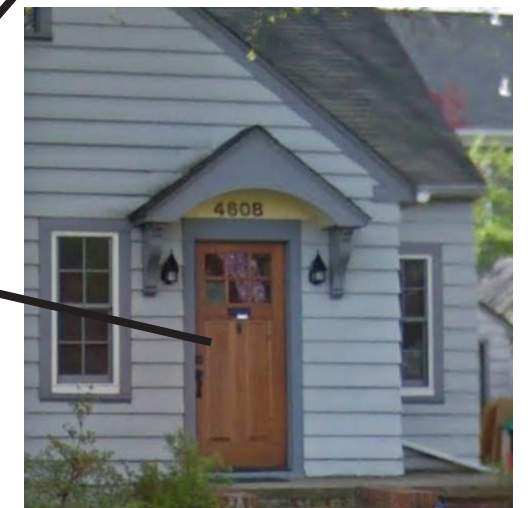
GREY SHIPLAP



BLOND BRICK



WOOD ACCENT



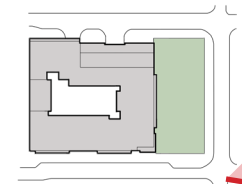
SURROUNDING PRECEDENT PALLETTE

LOT 25 - BETHESDA, MD

23 of 32



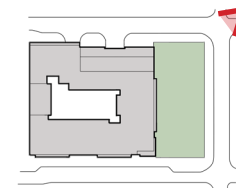
January 24th, 2024 ©2024 Torti Gallas + Partners | 1923 Vermont Avenue, NW, Grimke School, 2nd Floor | Washington, DC 20001 | 301.588.4800



VIEW LOOKING WEST
LOT 25 - BETHESDA, MD
24 of 32



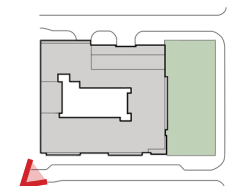
January 24th, 2024 ©2024 Torti Gallas + Partners | 1923 Vermont Avenue, NW, Grimke School, 2nd Floor | Washington, DC 20001 | 301.588.4800



VIEW LOOKING SOUTHWEST
LOT 25 - BETHESDA, MD
25 of 32



January 24th, 2024 ©2024 Torti Gallas + Partners | 1923 Vermont Avenue, NW, Grimke School, 2nd Floor | Washington, DC 20001 | 301.588.4800



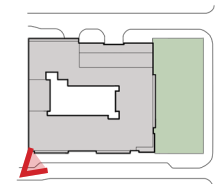
HIGHLAND AVE. VIEW LOOKING EAST

LOT 25 - BETHESDA, MD

26 of 32



January 24th, 2024 ©2024 Torti Gallas + Partners | 1923 Vermont Avenue, NW, Grimke School, 2nd Floor | Washington, DC 20001 | 301.588.4800



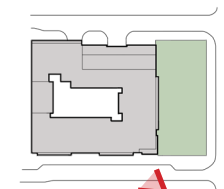
HIGHLAND AVE. VIEW LOOKING EAST

LOT 25 - BETHESDA, MD

27 of 32



January 24th, 2024 ©2024 Torti Gallas + Partners | 1923 Vermont Avenue, NW, Grimke School, 2nd Floor | Washington, DC 20001 | 301.588.4800



HIGHLAND AVE. VIEW LOOKING WEST

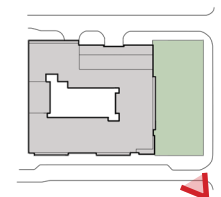
LOT 25 - BETHESDA, MD

28 of 32





January 24th, 2024 ©2024 Torti Gallas + Partners | 1923 Vermont Avenue, NW, Grimke School, 2nd Floor | Washington, DC 20001 | 301.588.4800



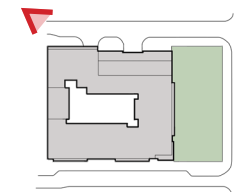
GREENWAY VIEW LOOKING NORTHWEST

LOT 25 - BETHESDA, MD

30 of 32



January 24th, 2024 | ©2024 Torti Gallas + Partners | 1923 Vermont Avenue, NW, Grimke School, 2nd Floor | Washington, DC 20001 | 301.588.4800



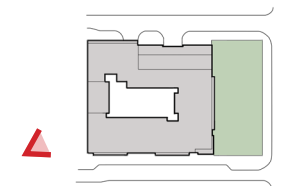
MAPLE AVE. VIEW LOOKING EAST

LOT 25 - BETHESDA, MD

31 of 32



January 24th, 2024 ©2024 Torti Gallas + Partners | 1923 Vermont Avenue, NW, Grimke School, 2nd Floor | Washington, DC 20001 | 301.588.4800



WISCONSIN AVE. VIEW LOOKING EAST

LOT 25 - BETHESDA, MD

32 of 32

