

## 7749 old georgetown road

bethesda, maryland

DAP - re-submission

site location

7749 old georgetown road  
bethesda, md 20814

developer

stonebridge

land use counsel

selzer gurvitch rabin wertheimer & polott, p.c.

civil engineer

vika maryland, llc

architect

sk+i architectural design group, llc





© 2023 SK+I Architectural Design Group, LLC.

7749 old georgetown road | bethesda, maryland

july 12, 2023

A01





## dap recommendations

- Return with further refinement to the Old Georgetown Rd facade.
- Evaluate connection between building podium/tower and base. Can angularity meet the ground?
- Look at materiality of the tower and setbacks on Old Georgetown Rd.



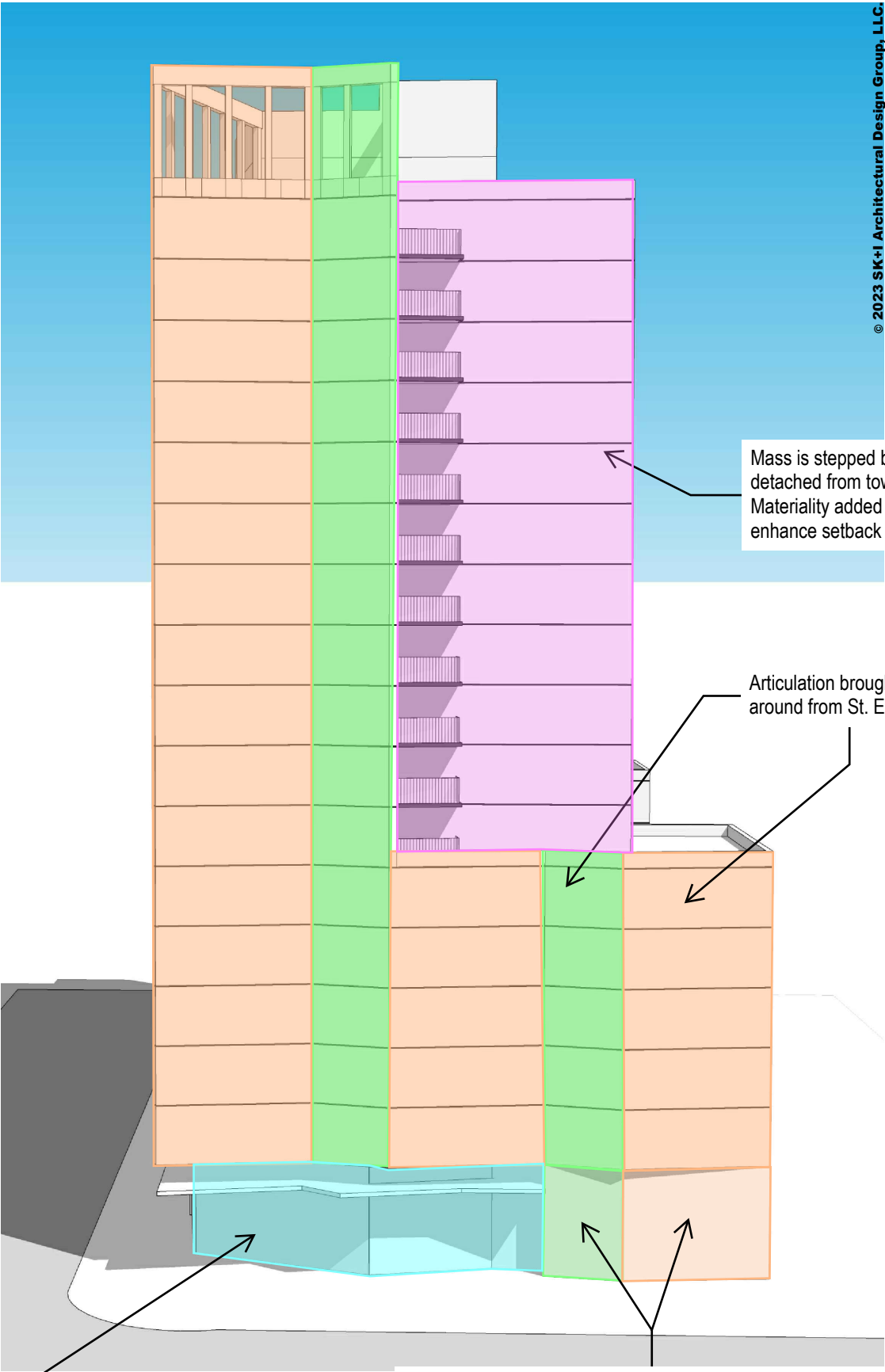


Articulation brought down to ground, connecting "podium" and base

Recessed Retail that relates to articulation and shape above

7749 old georgetown road | bethesda, maryland

form development diagram

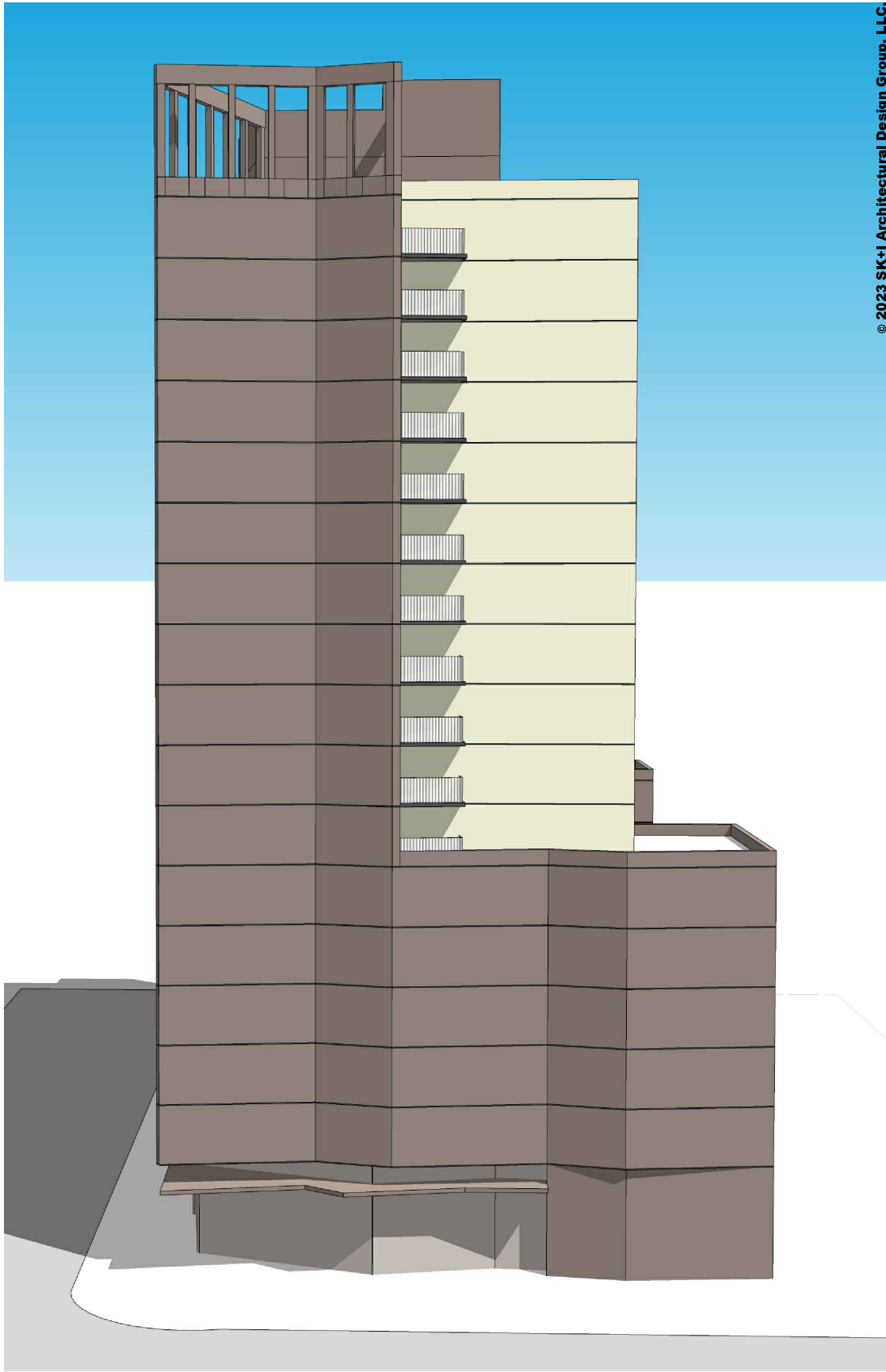
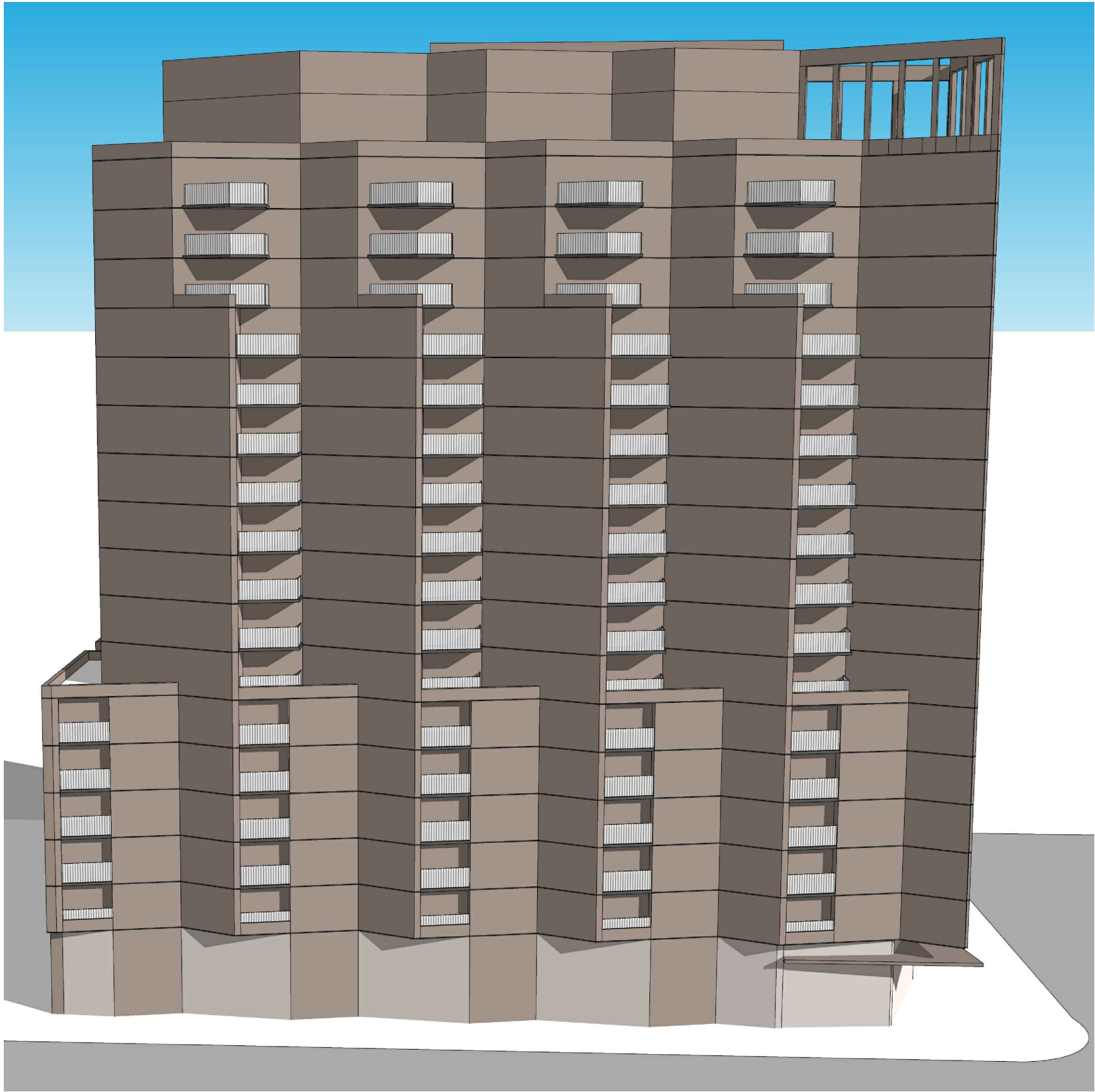


Mass is stepped back and detached from tower. Materiality added to enhance setback

Articulation brought around from St. Elmo

Base connection/setback due to BTL adjacency. Similar angle as above to emphasize connection to ground

© 2023 SK+I Architectural Design Group, LLC

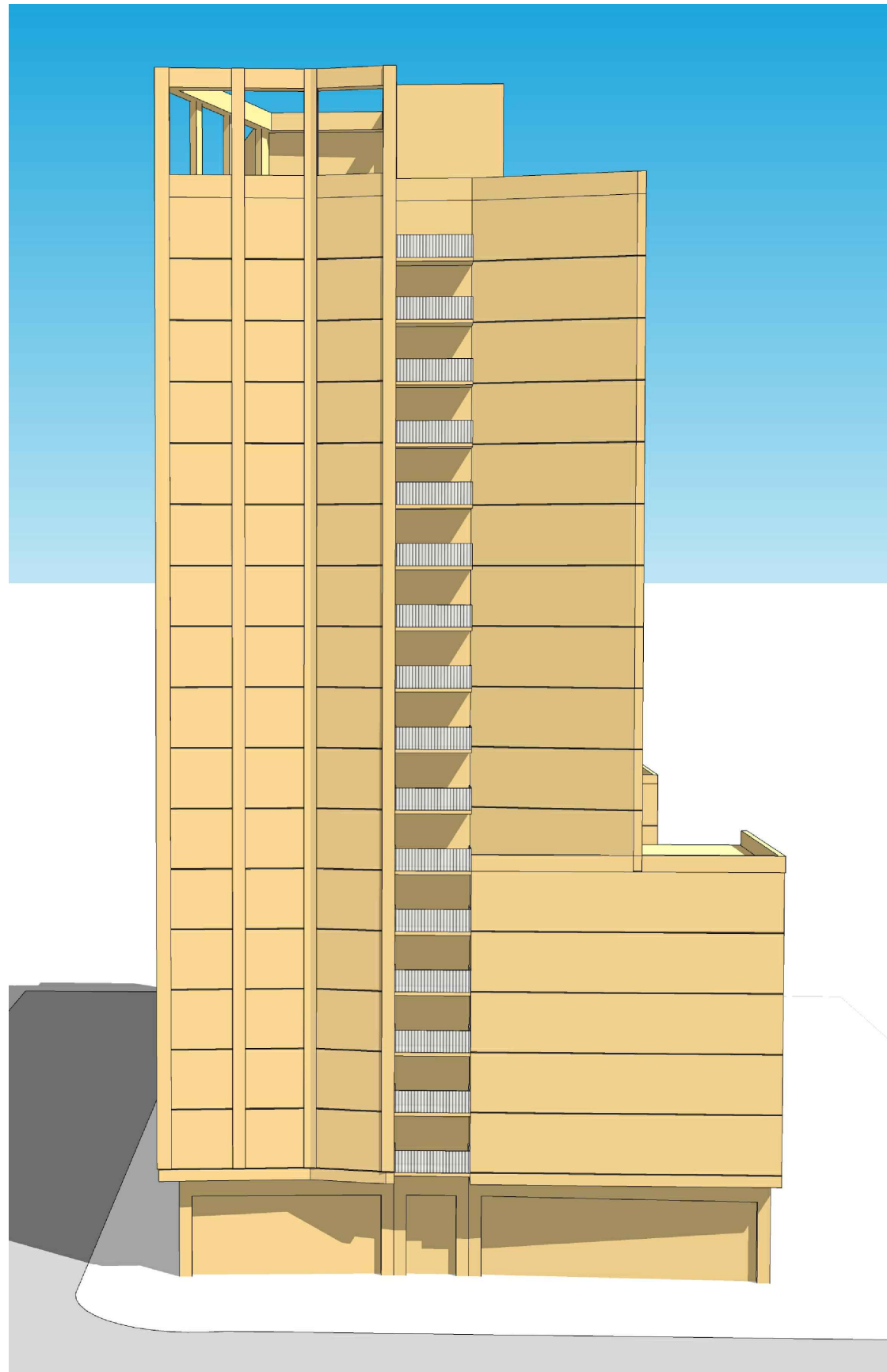


© 2023 SK+I Architectural Design Group, LLC

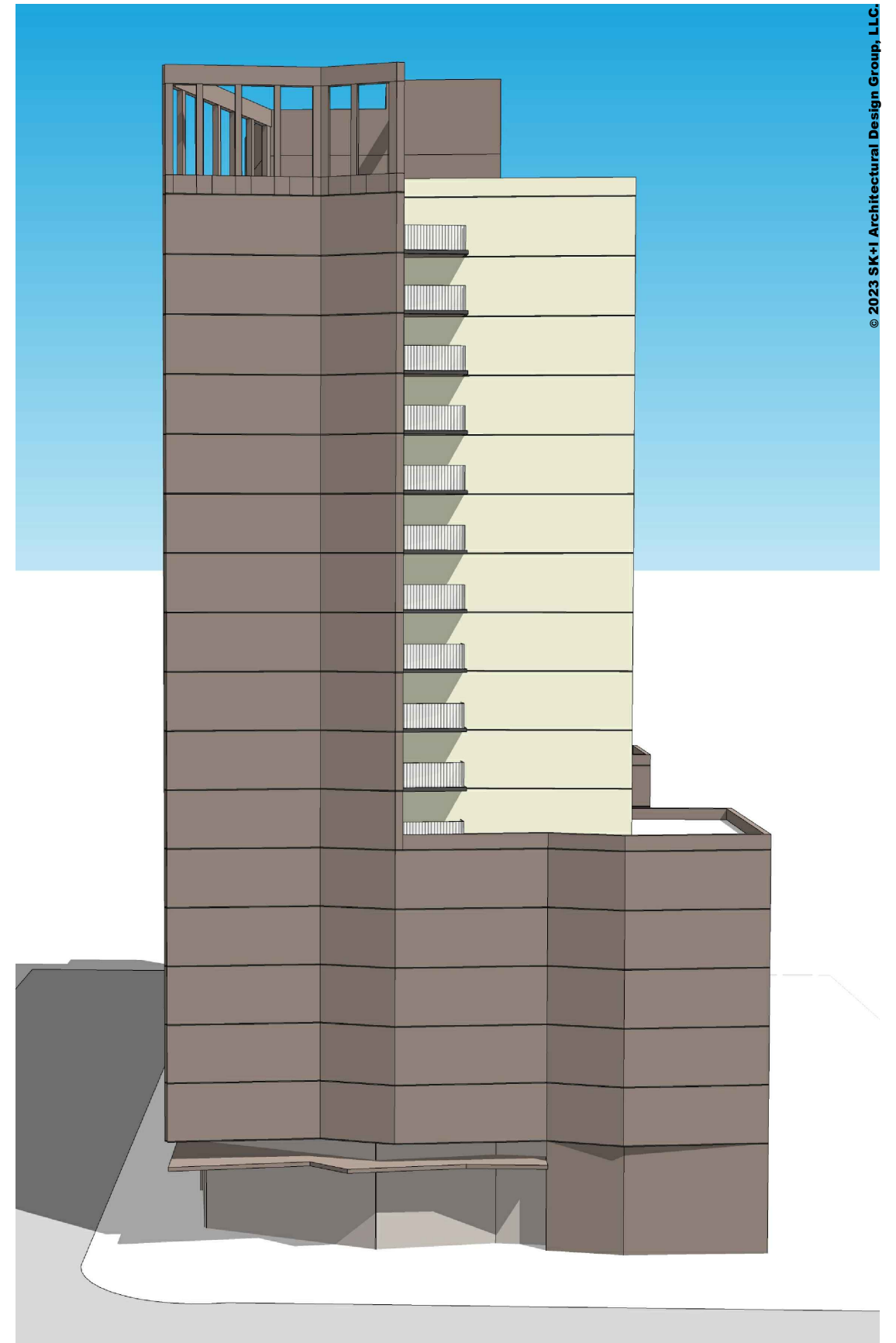
7749 old georgetown road | bethesda, maryland

july 12, 2023

A04



DAP 6/28/23 - OLD GEORGETOWN RD ELEVATION



UPDATED OLD GEORGETOWN RD ELEVATION

© 2023 SK+I Architectural Design Group, LLC





7749 old georgetown road | bethesda, maryland

july 12, 2023 | **A06**





7749 old georgetown road | bethesda, maryland

july 12, 2023 | **A07**





7749 old georgetown road | bethesda, maryland

july 12, 2023

A08





7749 old georgetown road

bethesda, maryland

july 12, 2023

A09

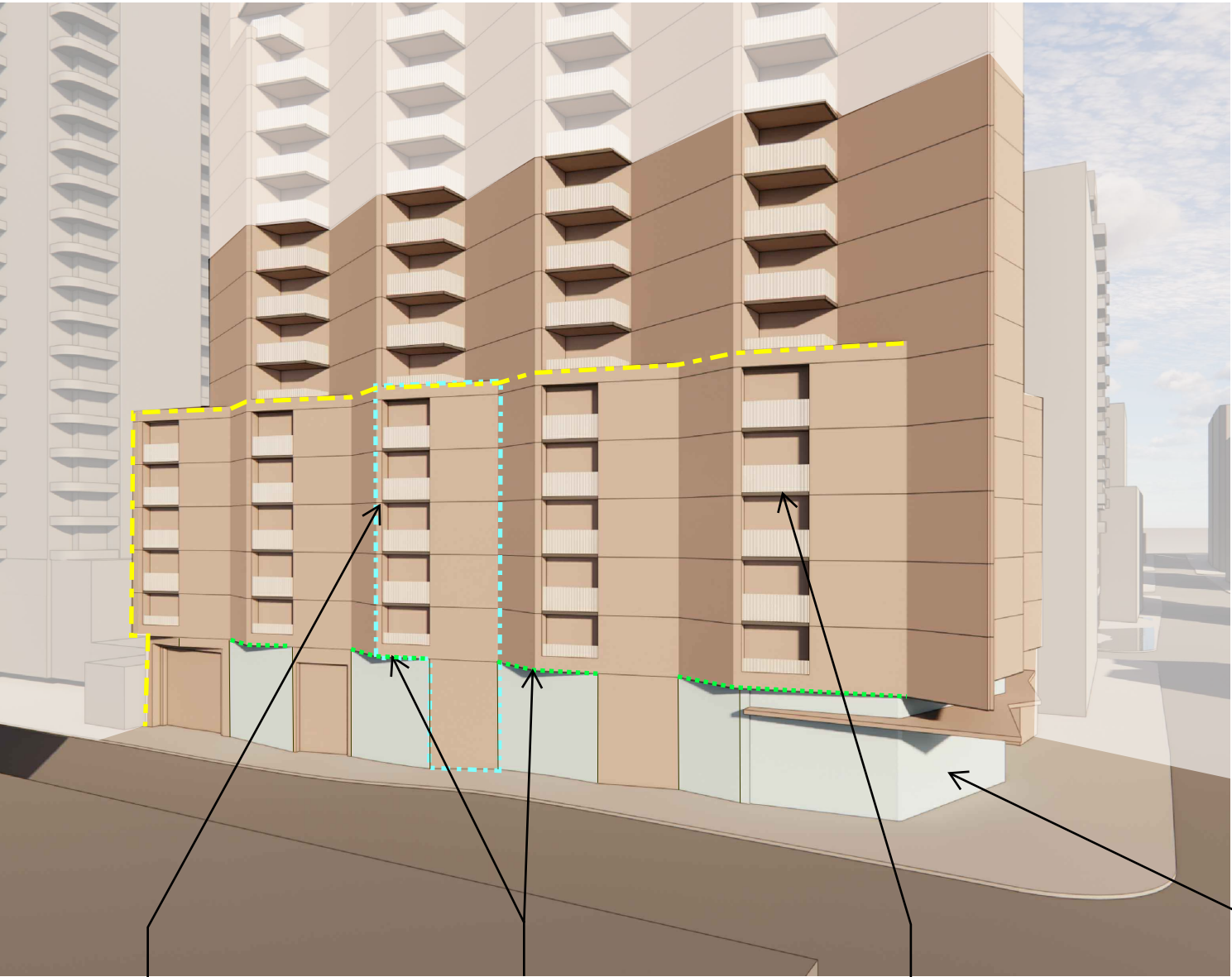




7749 old georgetown road | bethesda, maryland

july 12, 2023 | **A10**

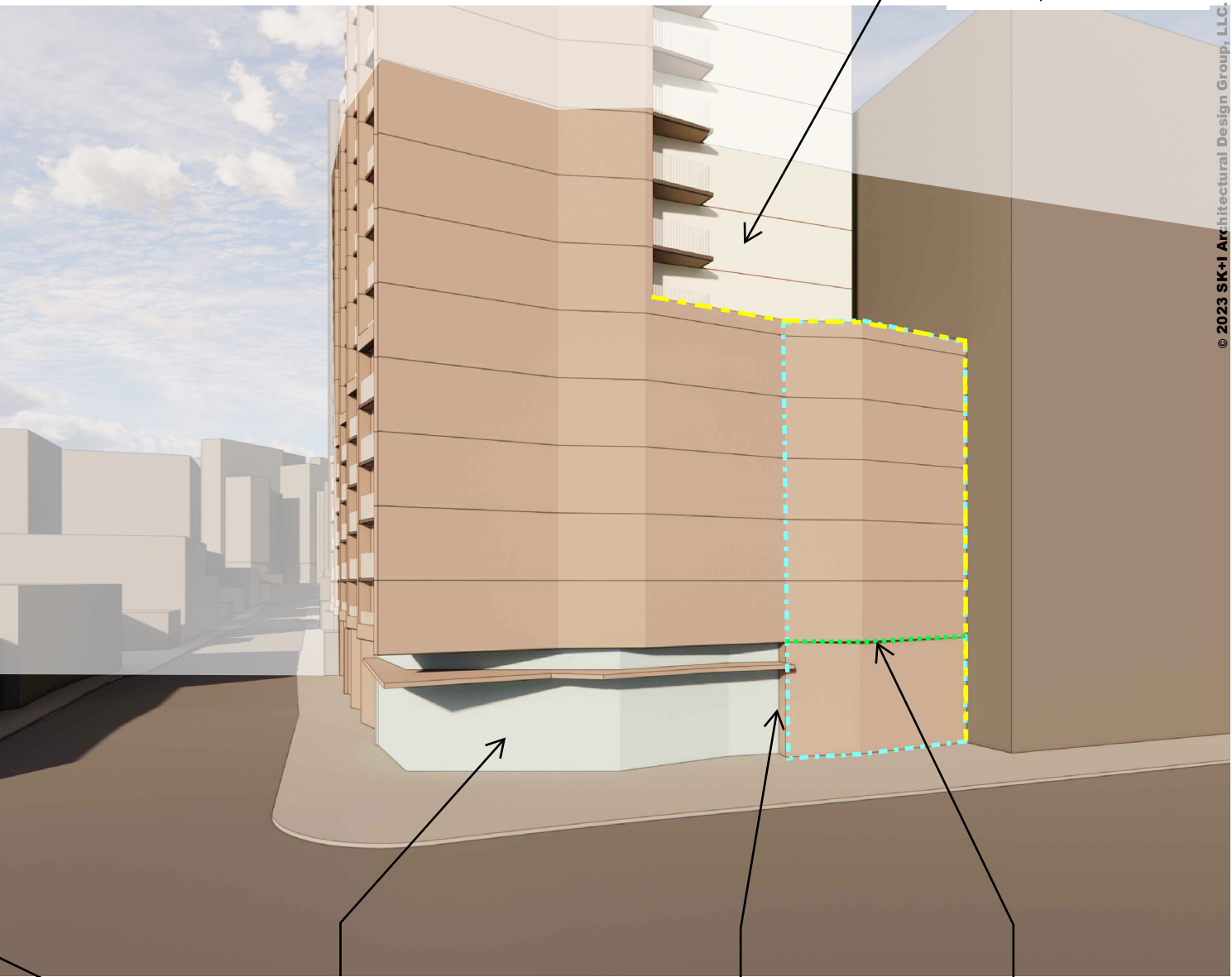




Podium articulation brought down to ground, connecting "podium" and base

Bay Condition

Integration of balconies face street



Recessed retail, articulation corresponds to tower and podium above

Podium articulation brought down to ground, connecting "podium" and base

Bay Condition