

CORRIDOR FORWARD

I-270 Transit Plan

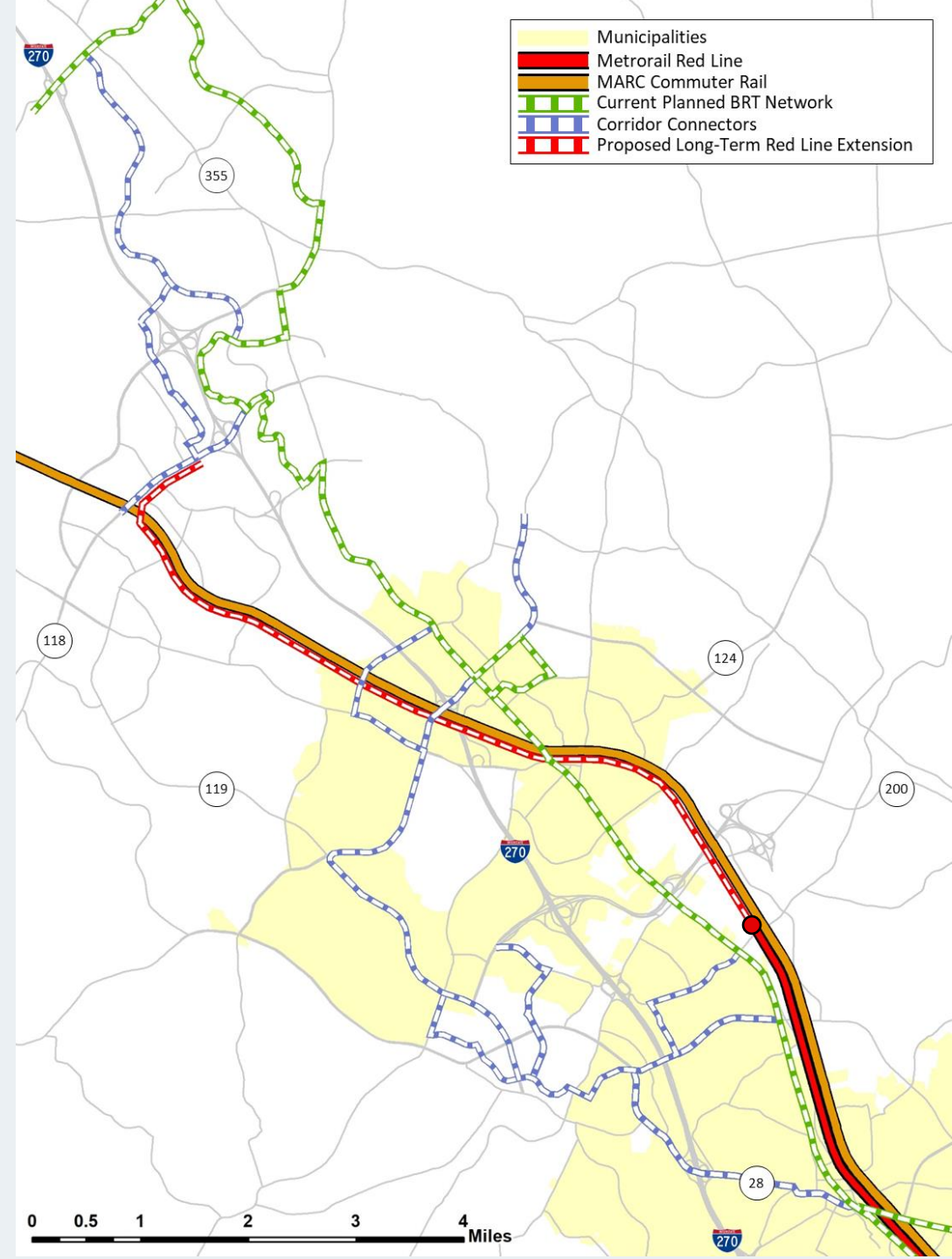
T&E Work Session
Montgomery Planning



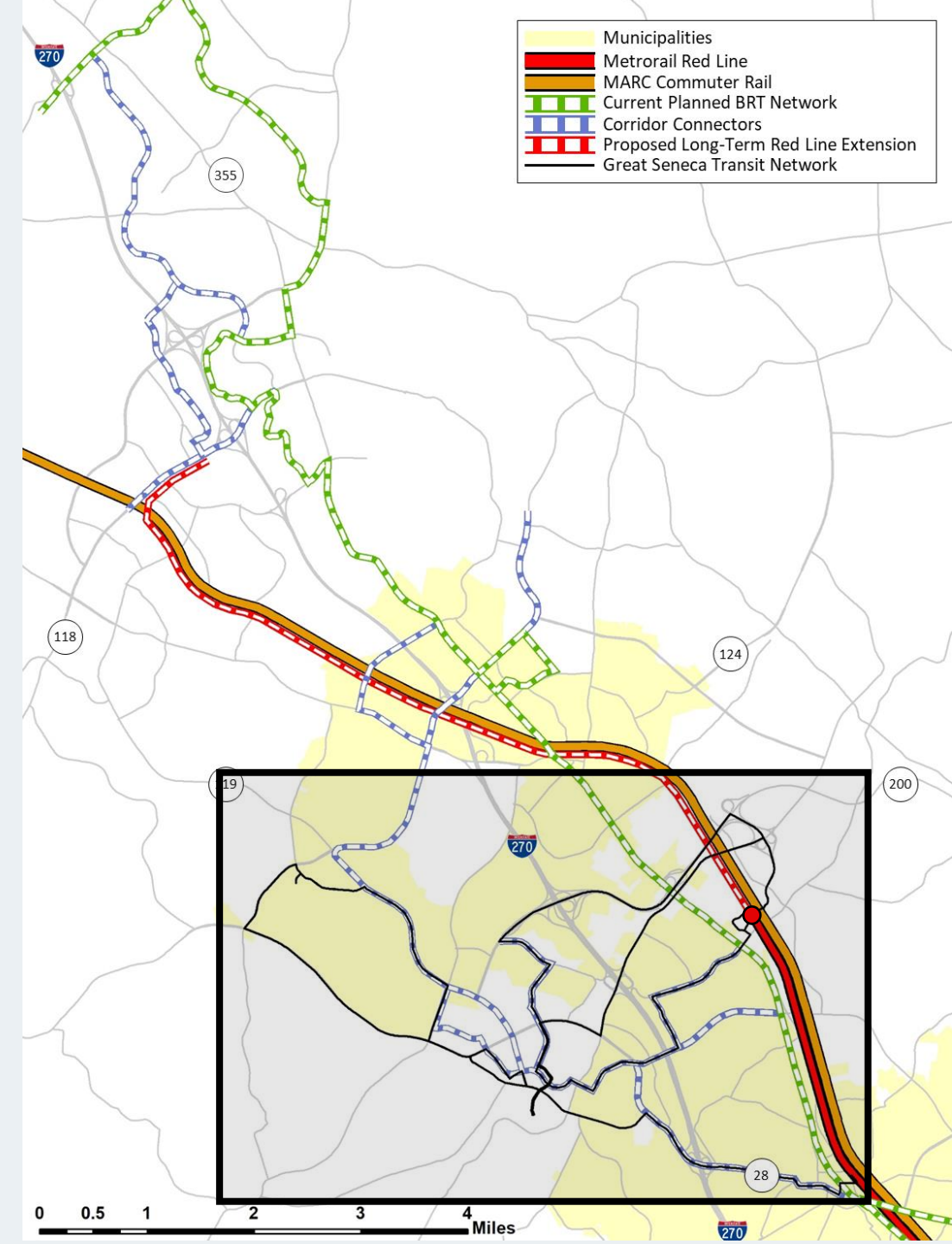
Revised Corridor Connectors

**Better alignment with the
Great Seneca Transit Network**

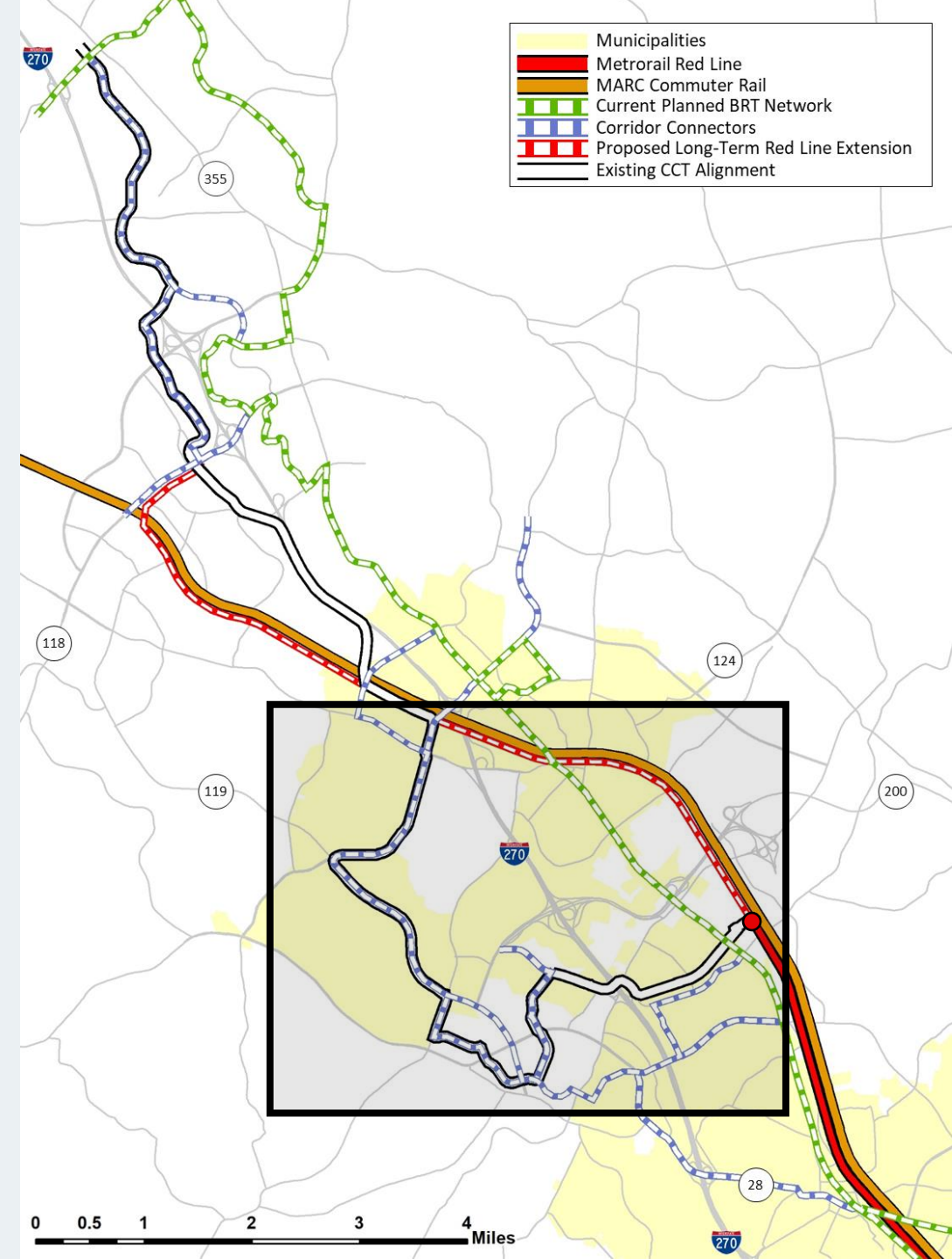
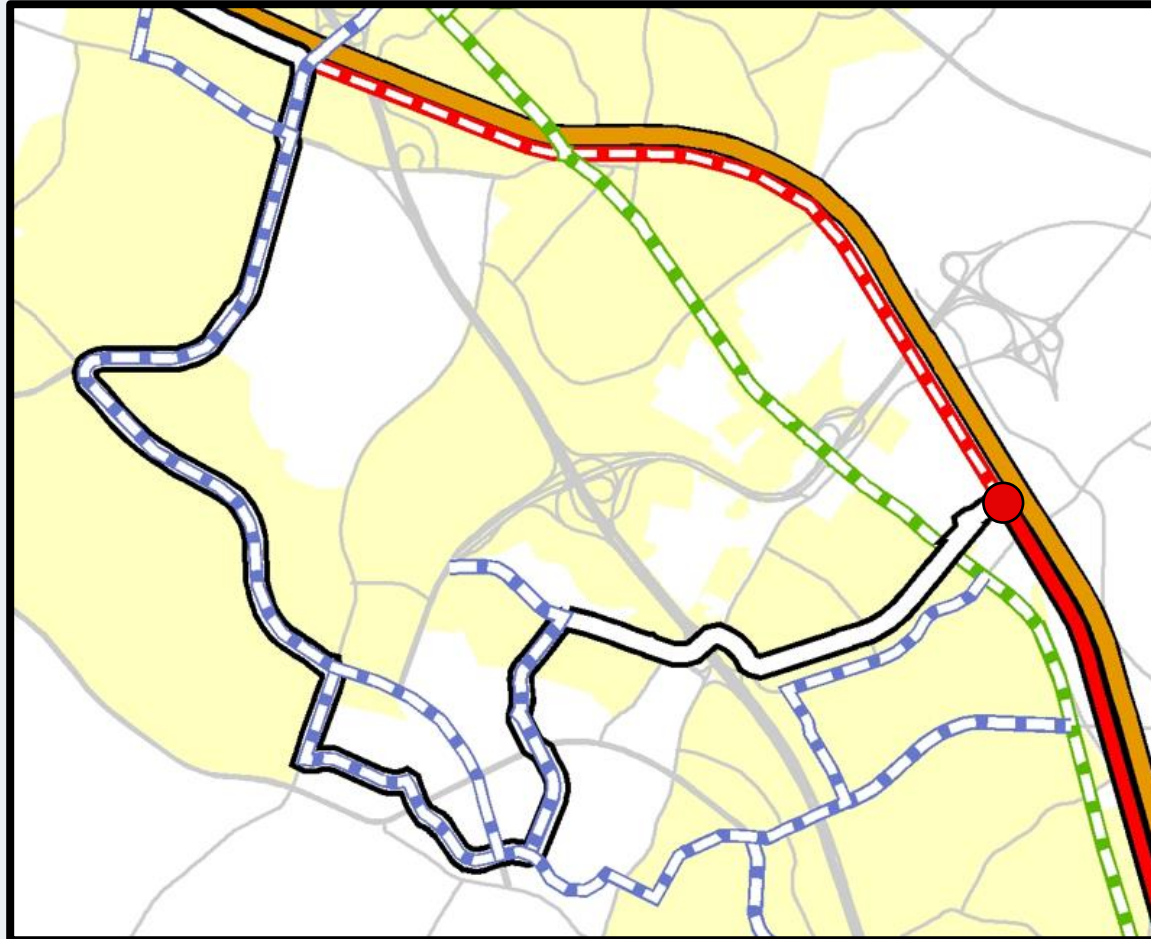
**Maintain connections to
CCT communities and leverage
CCT dedications**



Better Alignment with the Great Seneca Transit Network



Maintain connections to CCT communities and leverage CCT dedications



Updated Organization of Recommendations

Recommended Near-Term Transit Network

- A. Implement MD 355 BRT and Veirs Mill Road BRT
- B. Implement the Corridor Connectors
- C. Support the Great Seneca Transit Network
- D. Support the North Bethesda Transitway
- E. Continue state-provided bus service on I-270

Recommended Long-Term Transit Vision

- F. Advance a Red Line extension to Germantown
- G. Support the long-term potential of MARC Rail
- H. Support new MARC stations at Shady Grove & White Flint

Supporting Recommendations

- I. Repurpose traffic lanes to transit lanes
- J. Develop a new multimodal transit hub
- K. Prioritize transit, walking, & bicycling
- L. Ensure safe access to planned transit stops
- M. Update relevant land use plans and guidelines
- N. Maximize travel potential of dedicated bus lanes
- O. Support incremental implementation of bus lanes

Future Considerations

- P. Study extension of the Purple Line
- Q. Design the American Legion Bridge to support rail
- R. Explore a direct transit connection to Frederick