

Thanks for Joining Us!

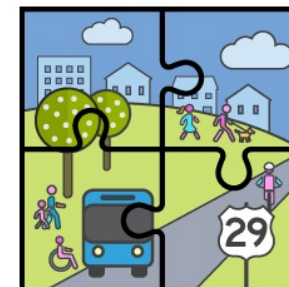
*We will begin at 6:30 PM,
please mute yourself upon
entering the meeting.*



Montgomery Planning Up-County Division

11/04/2021

Third Fall Listening Session



Fairland and Briggs Chaney
MASTER PLAN

Welcome to the 3rd Fall Listening Session!

Mobility and Equitable Infrastructure

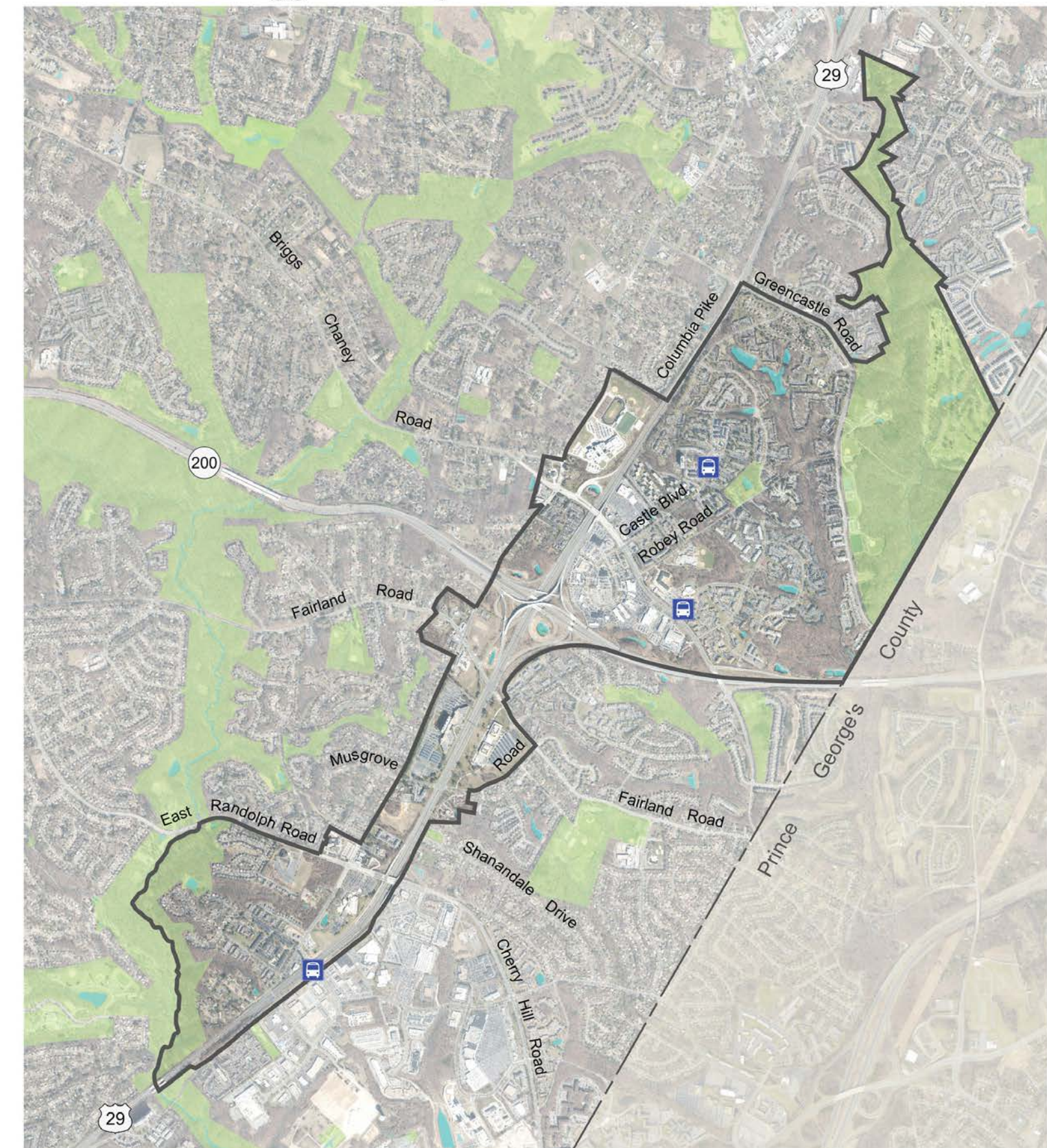
Agenda

- Introduction w/ Polling & Ice Breaker
- Breakout Rooms (smaller groups)
- Regroup & Debrief
- Wrap-up w/ Lessons Learned + Poem

Purpose

- LISTEN to community feedback
- APPLY collective feedback to the planning process

Fairland and Briggs Chaney



- Fairland and Briggs Chaney Master Plan Boundary
- - - County Line
- Parkland
- BRT Station



What have we heard?

Camera On & SMILE – Group Photo



Barriers to Better Pedestrian/Bike Connectivity

- Narrow sidewalks with no buffer from vehicular traffic





Barriers to Better Pedestrian/Bike Connectivity

- Narrow sidewalks with no buffer from vehicular traffic
- Objects that block sidewalks and sidepaths
- Missing and uneven sidewalks

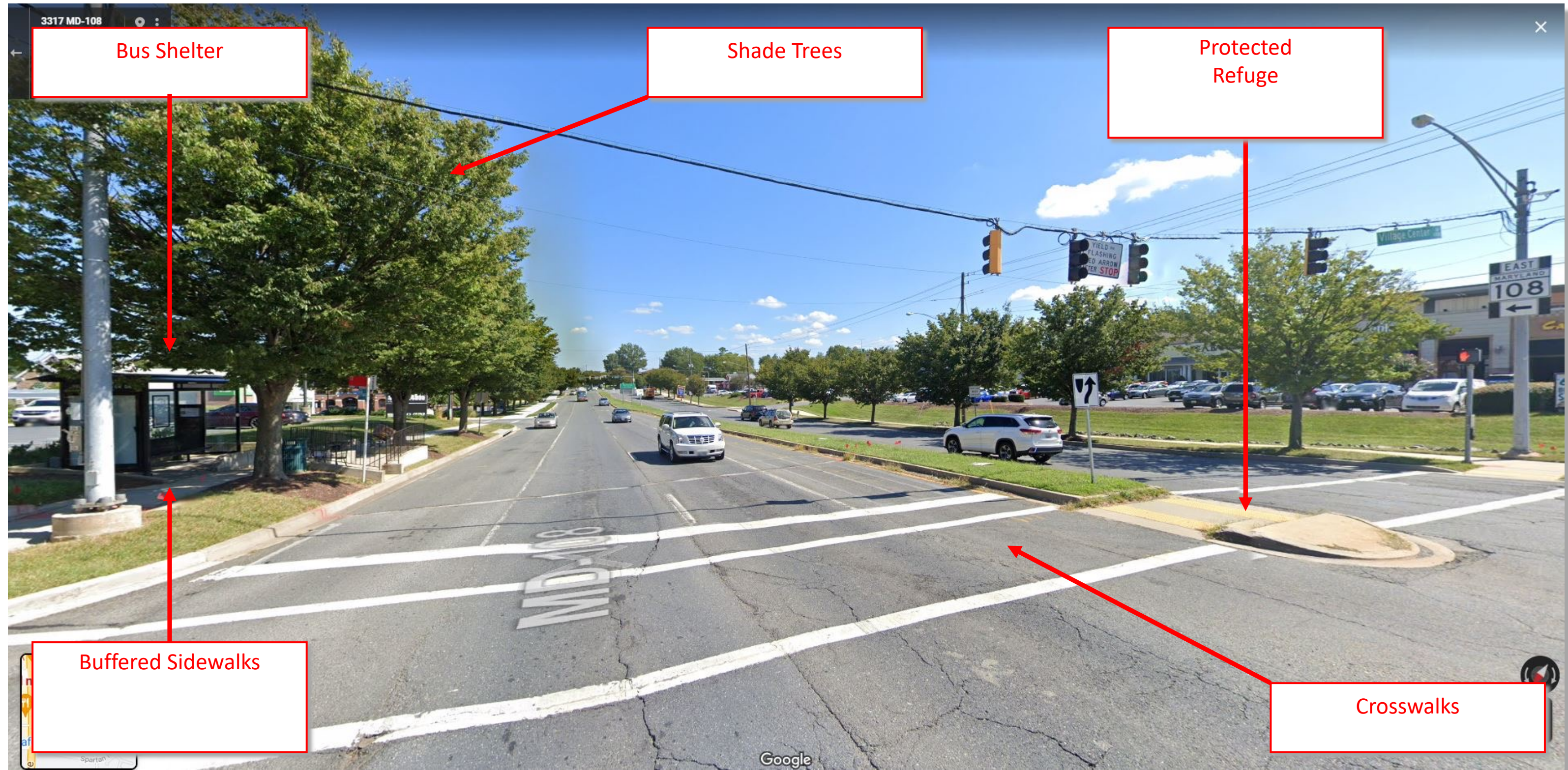


Barriers to Better Pedestrian/Bike Connectivity

- Narrow sidewalks with no buffer from vehicular traffic
- Objects that block sidewalks and sidepaths
- Missing and uneven sidewalks
- **Free right turns that cause conflict between pedestrians and drivers**
- **Lack of shade on sidewalks and sidepaths**



Elements that Provide a Comfortable Walking/Biking Experience



Process and Timeline



HOW TO USE ZOOM

- **Recording** - This meeting will be recorded.
- **Mute** – Please mute yourselves when you are not speaking. Don't forget to unmute yourself to speak.
- **Cameras ON** – In your breakout groups, please feel free to meet face to face.
- **Contributing** – During the discussion please use the “raise/lower hand” button to indicate you’d like to speak.





*Thank you for attending -
Stay in touch!*

*Sign Up for the eLetter
Take the Questionnaire*

CONTACT INFO.

Molline Jackson - co-Lead
molline.Jackson@montgomeryplanning.org

Phillip Estes – co-Lead
Phillip.estes@montgomeryplanning.org

