

Thanks for Joining Us!

*We will begin at 6:30 PM,
please mute yourself upon
entering the meeting.*

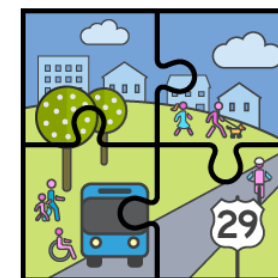


Montgomery Planning

Up-County Division

11/04/2021

Second Fall Listening Session



Fairland and Briggs Chaney
MASTER PLAN

Welcome to the 2nd Fall Listening Session!

An Equitable Community, A Vibrant Economy and Healthy Environment

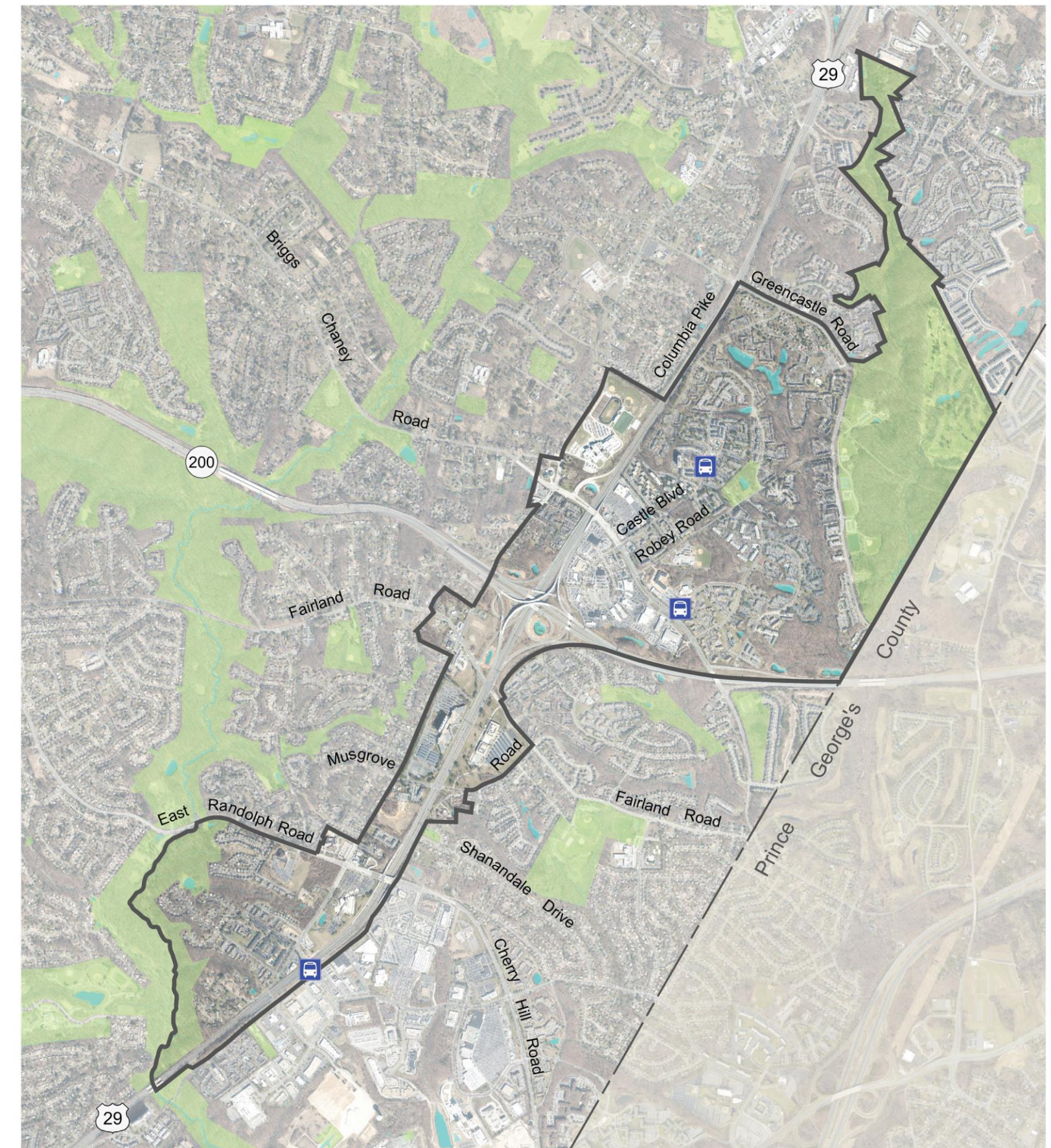
Agenda

- Introduction w/ Polling & Ice Breaker
- Breakout Rooms (smaller groups)
- Regroup & Debrief
- Wrap-up w/ Lessons Learned + Poem

Purpose

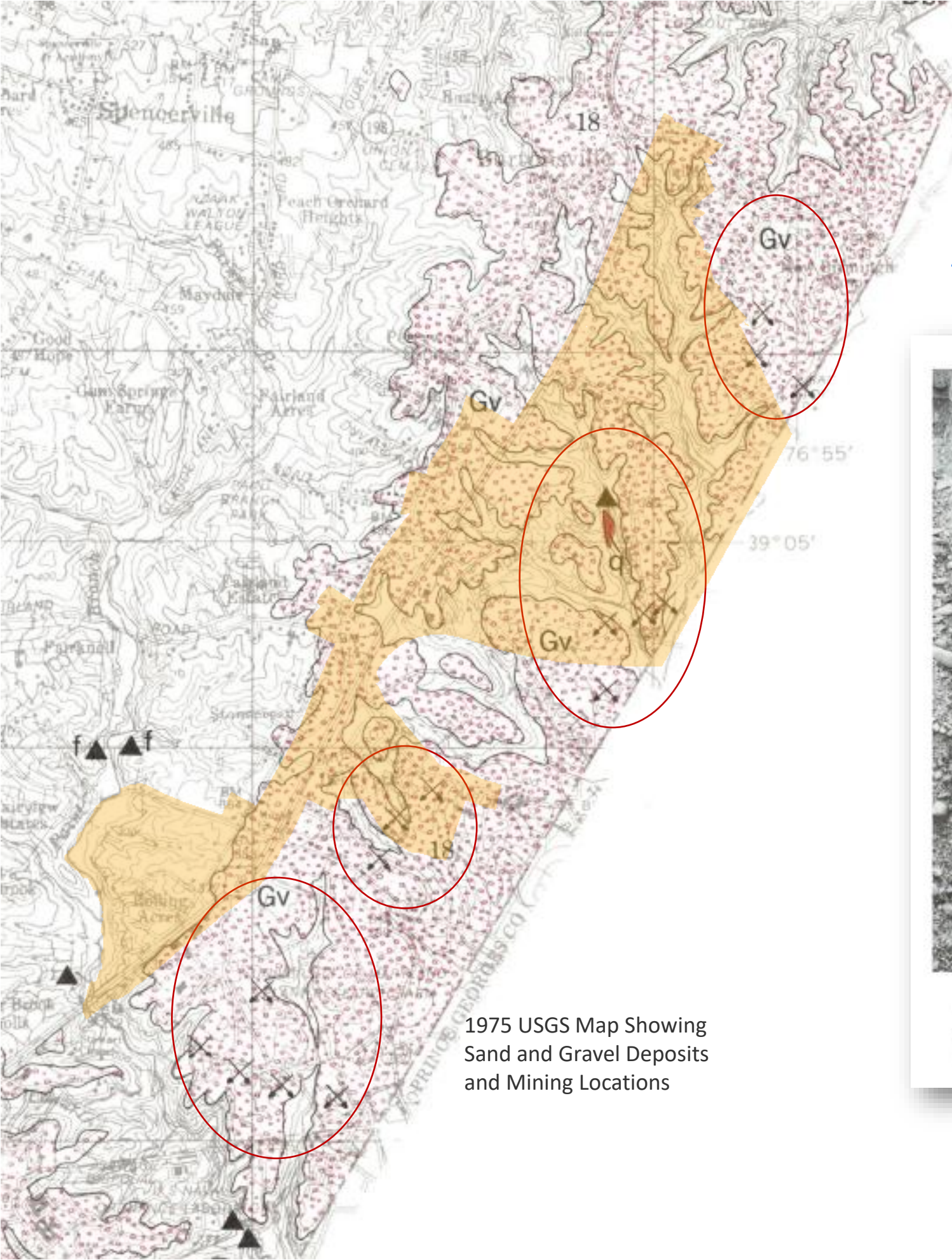
- LISTEN to community feedback
- APPLY collective feedback to the planning process

Fairland and Briggs Chaney



- Fairland and Briggs Chaney Master Plan Boundary
- - - County Line
- Parkland
- BRT Station

Camera On & SMILE – Group Photo

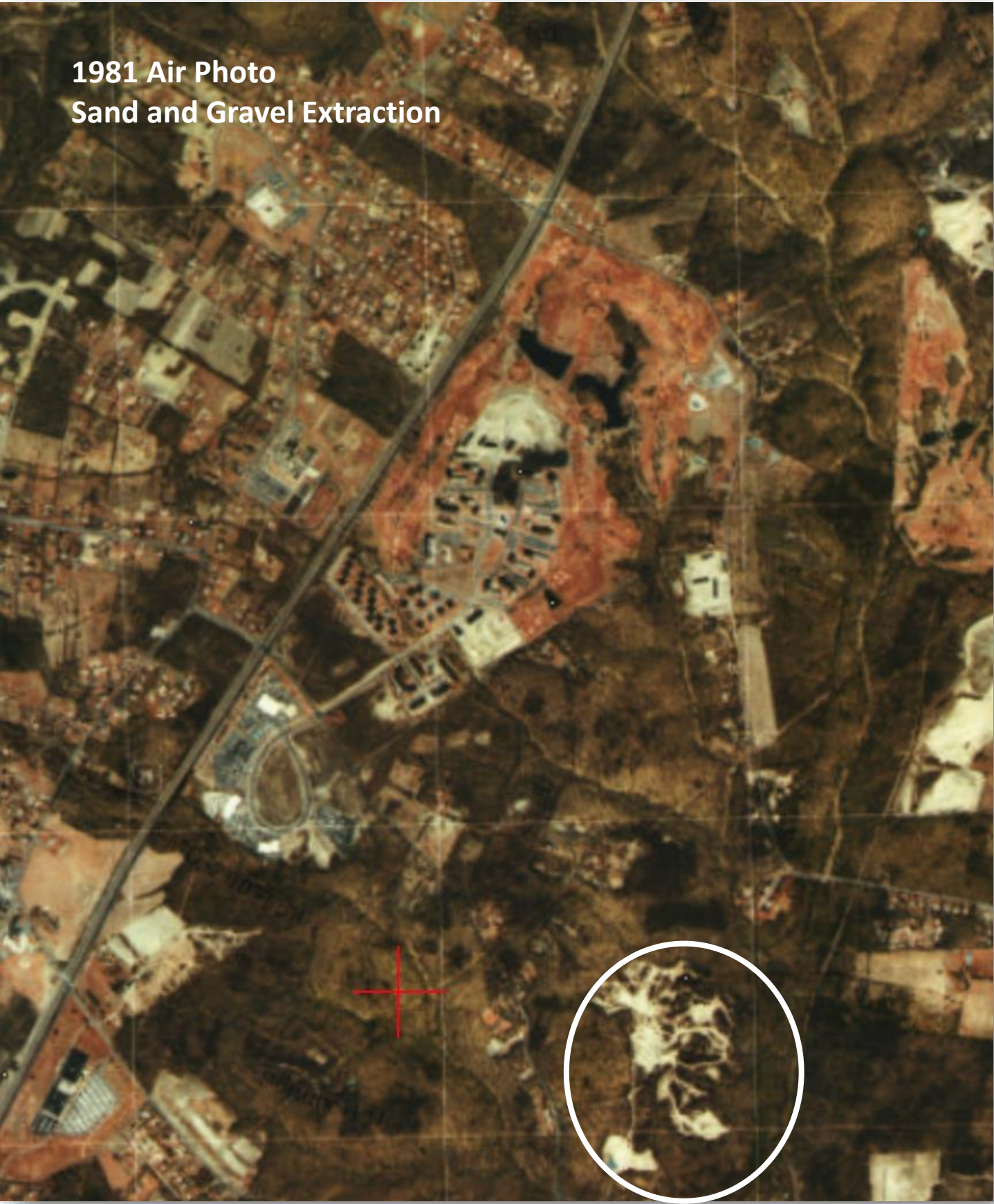


1975 USGS Map Showing Sand and Gravel Deposits and Mining Locations

A Legacy of Mining

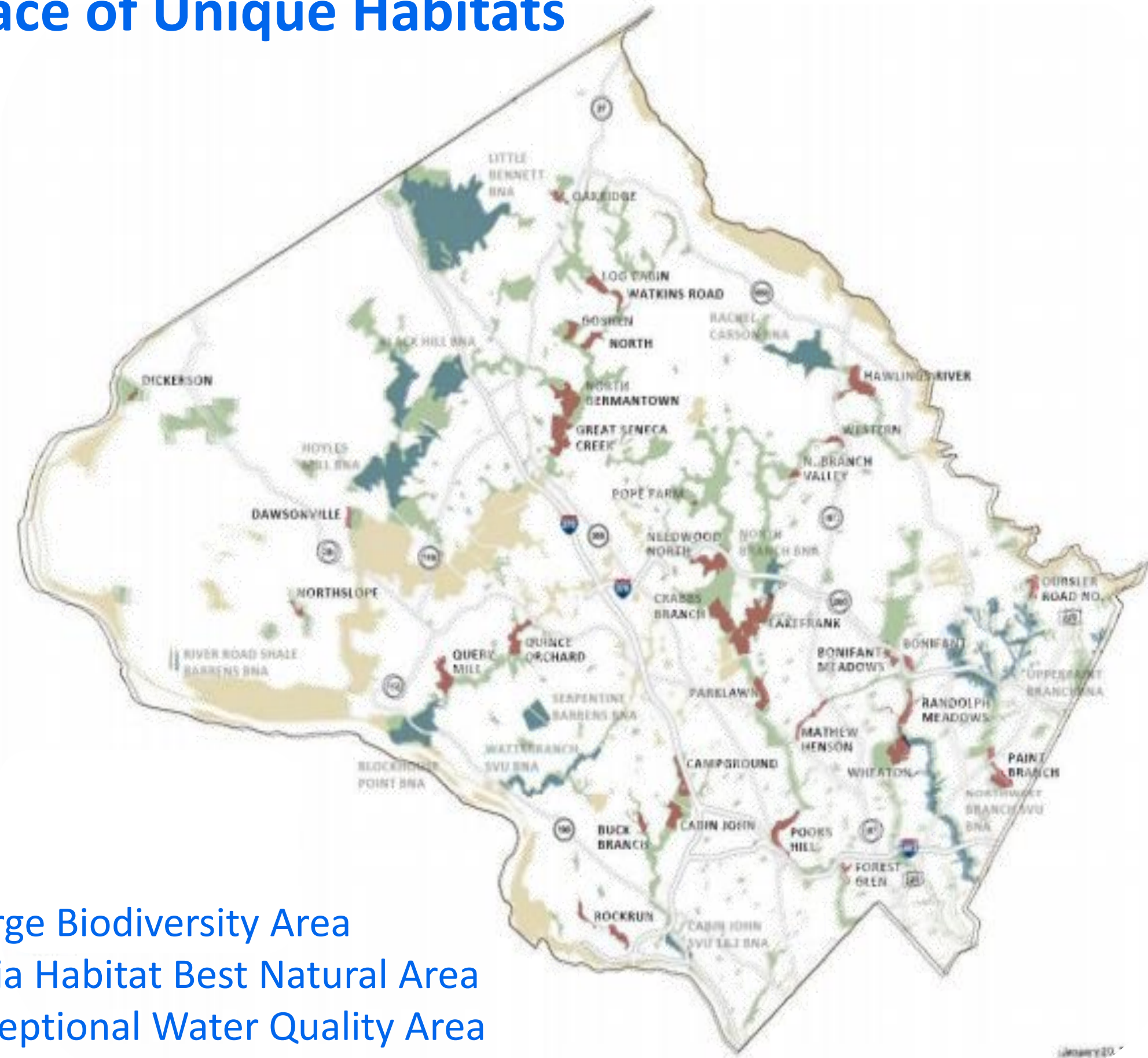


Figure 27. Massive, very coarse gravel near the base of the Patuxent Formation. Exposure in Contee sand and gravel pit (Loc. 40), Montgomery County, Maryland.



1981 Air Photo Sand and Gravel Extraction

A Place of Unique Habitats

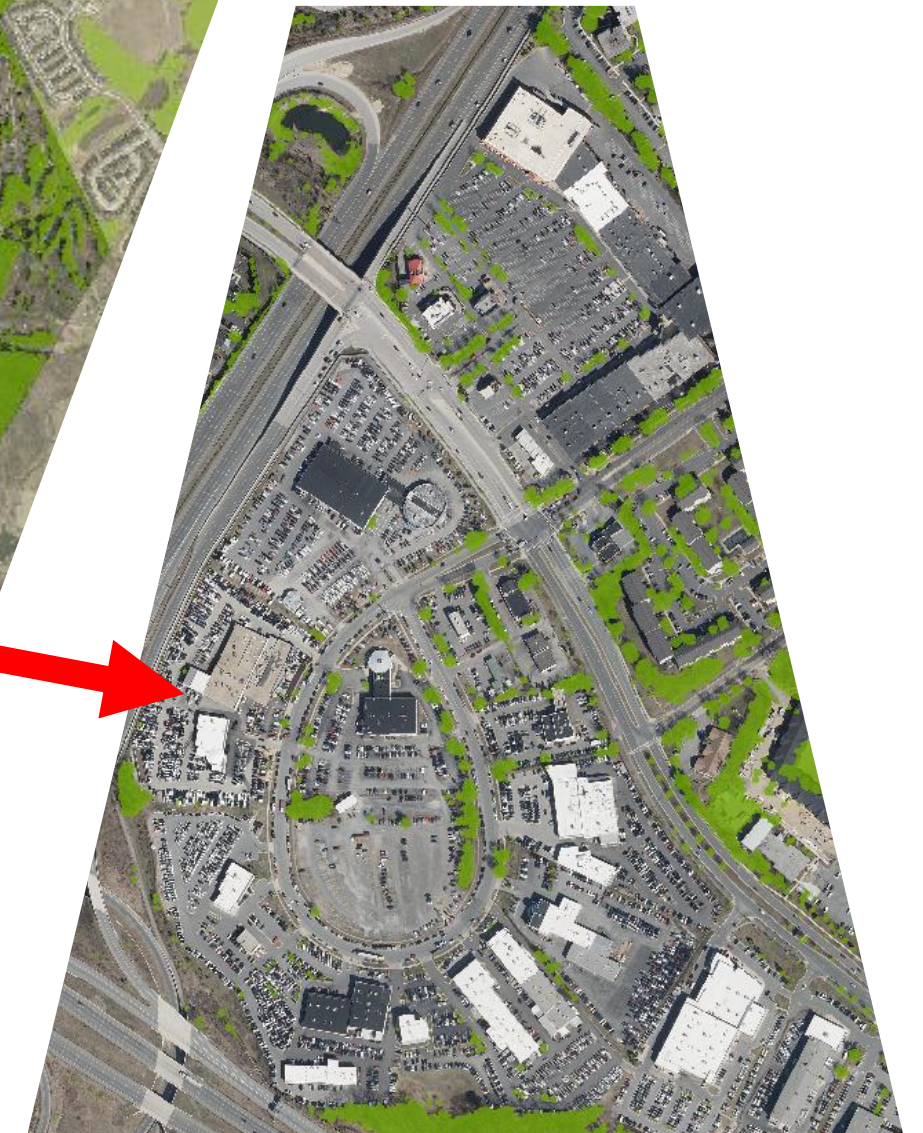
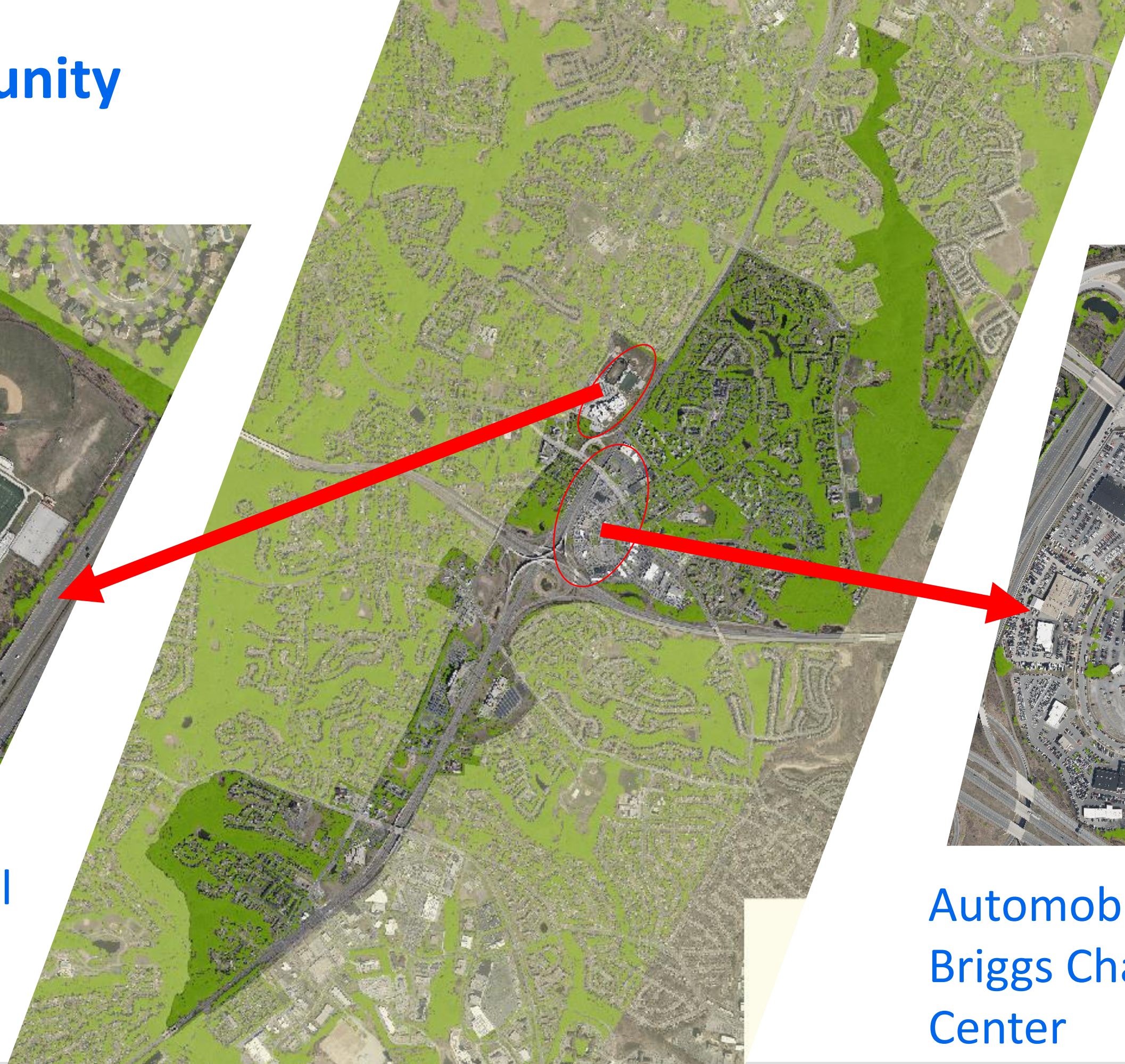


- Paint Branch Gorge Biodiversity Area
- Fall Line Magnolia Habitat Best Natural Area
- Paint Branch Exceptional Water Quality Area

A Leafy Community (mostly)



Paint Branch High School



Automobile Circle &
Briggs Change Shopping
Center

Process and Timeline



HOW TO USE ZOOM

- **Recording** - This meeting will be recorded.
- **Mute** – Please mute yourselves when you are not speaking. Don't forget to unmute yourself to speak.
- **Cameras ON** – In your breakout groups, please feel free to meet face to face.
- **Contributing** – During the discussion please use the “raise/lower hand” button to indicate you’d like to speak.





*Thank you for attending -
Stay in touch!*

*Sign Up for the eLetter
Take the Questionnaire*

CONTACT INFO.

Molline Jackson - co-Lead
molline.Jackson@montgomeryplanning.org

Phillip Estes – co-Lead
Phillip.estes@montgomeryplanning.org

