

HOW TO KEEP MONTGOMERY COUNTY THRIVING FOR THE NEXT 30 YEARS

Thrive Montgomery 2050 is a comprehensive update to the county's General Plan. It is about addressing historic inequities, adapting to new realities, and shifting the way we think about how the county should grow. It is a long-range policy framework to help guide, over multiple decades, how Montgomery County should respond to future opportunities and challenges while maintaining its important assets.

The draft plan includes community-informed and data-driven recommendations for land use, housing, transportation, environment, equity, design, arts and culture, parks and open spaces and the economy.

This document provides a brief overview of Montgomery Planning's proposal to keep Montgomery County thriving for the next 30 years.

The Target — Three Major Outcomes



Economic Health

We want to ensure a vibrant, strong and competitive economy by attracting and maintaining major employers, continuing to enhance our federal campuses, supporting small businesses and innovation, and attracting and retaining a high-quality, diverse workforce.



Equity

We want to create a place where all residents have equal access to attainable housing, healthy foods, employment, transportation, education and more.

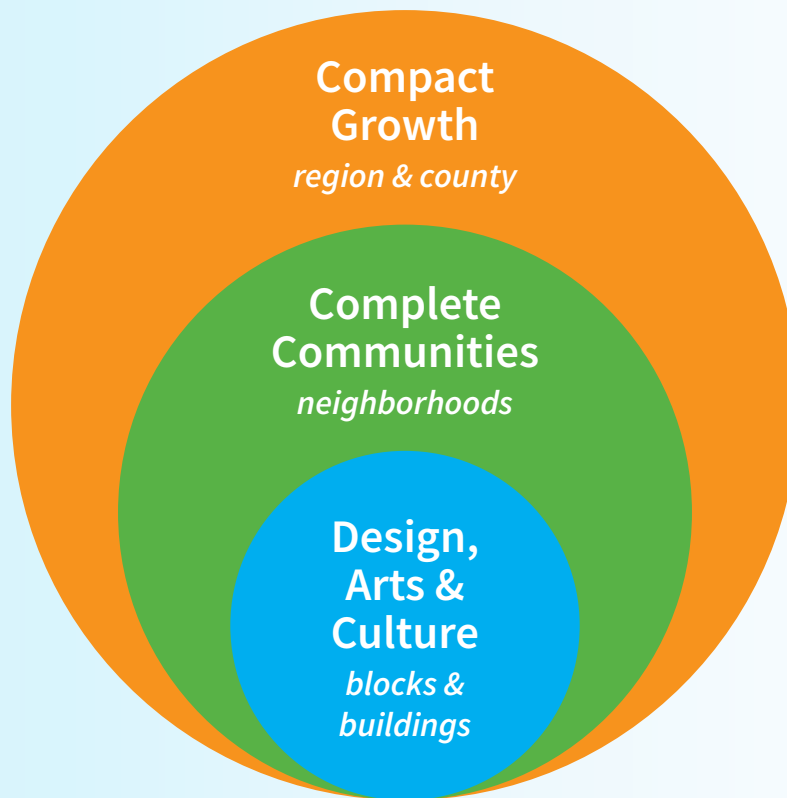


Environmental Resilience

We must use the best strategies to fight climate change and mitigate the impact of both planned changes and unexpected events and continue to preserve our natural resources.

Major Themes of the Plan

Based on community conversations, expert interviews, analysis and research, the Thrive Montgomery 2050 Plan will plan for growth at three scales — county/region, neighborhood, and blocks and buildings — and address the challenges Montgomery County faces focusing on these core themes:



Redraw the growth map

- Match the growth footprint to reality
- Restore East County growth corridors for equity and competitiveness
- Focus growth in centers of activity along corridors within footprint
- Strengthen the relevance of the agricultural reserve

Rethink the how (not just the how much and where) of growth

- Redevelopment as currency to pay for upgrades to amenities and infrastructure
- Reduced imperviousness/better stormwater performance
- Deliver complete communities and 15-minute living for as many people as possible

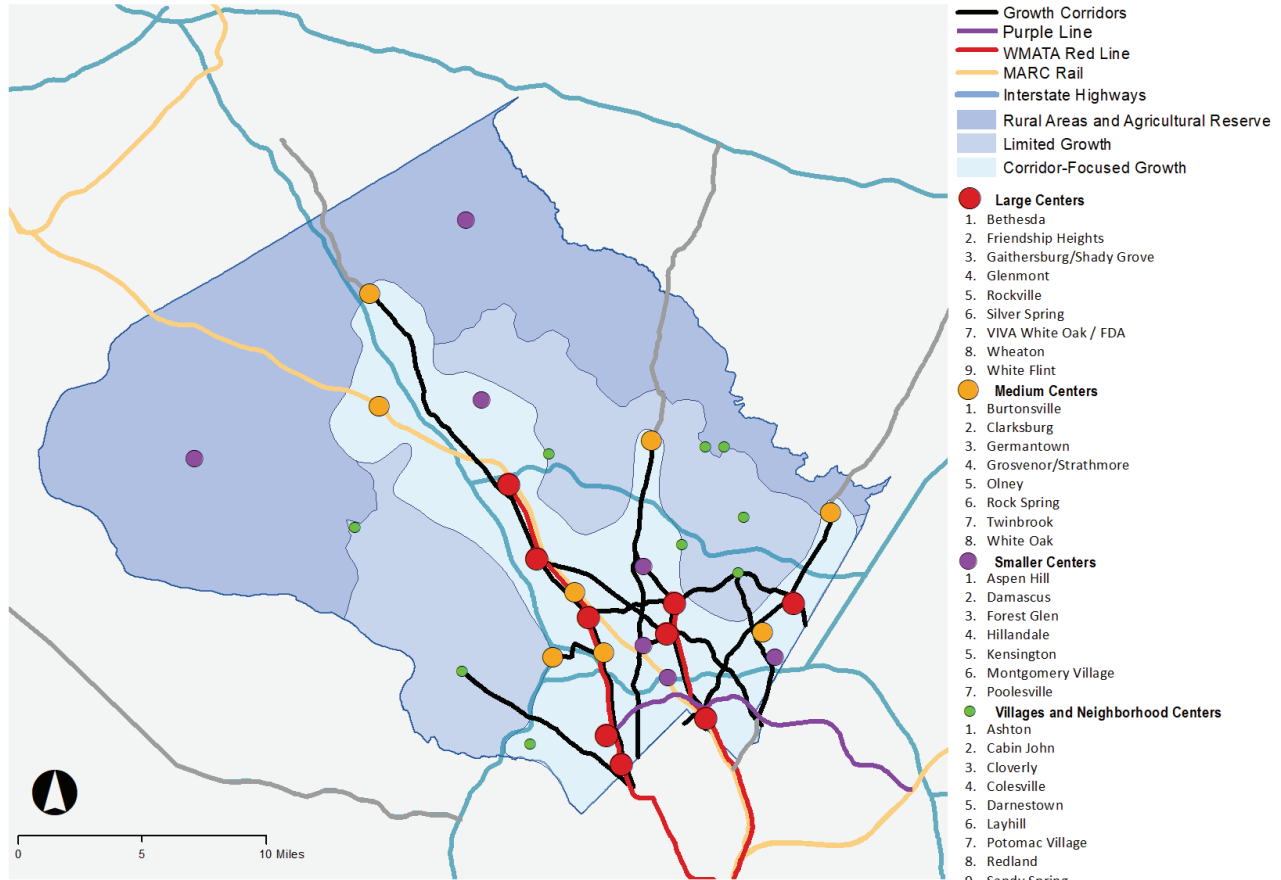
Plan for people, not cars

- Emphasize transit, walking and biking
- Integrate land use and transportation to build great places and reduce VMT
- Introduce social connection and health as explicit objectives
- Recognize the significance of IT infrastructure

Elevate the importance of design

- Use form-based codes to advance equity and competitiveness
- Incorporate arts and culture into public and private infrastructure
- Recognize quality of place as integral to economic competitiveness

A Vision for Growth



The Thrive Montgomery 2050 Growth Diagram illustrates growth concepts and potential centers of activity, but the diagram should be considered in the context of the Compact Growth and Complete Communities chapters. The centers of activity shown are not exhaustive of all existing or potential centers.

The Rural Areas and Agricultural Reserve (in darker blue) will continue to be dedicated primarily to agriculture, rural open space and environmental preservation. These areas can absorb some growth which will occur naturally as the agriculture evolves and existing residential communities' needs will change over time.

The Corridor-Focused Growth Area (in lightest blue), which has existing and planned transit, employment centers and adequate infrastructure in place, is recommended to accommodate the highest share of future growth as outlined in the plan.

The Limited Growth Area between these two tiers contains the mainly suburban residential communities where limited, organic growth is recommended to meet localized needs for services and provide a diverse, and appropriate range of housing choices; increase racial and socioeconomic integration; and achieve more Complete Communities.

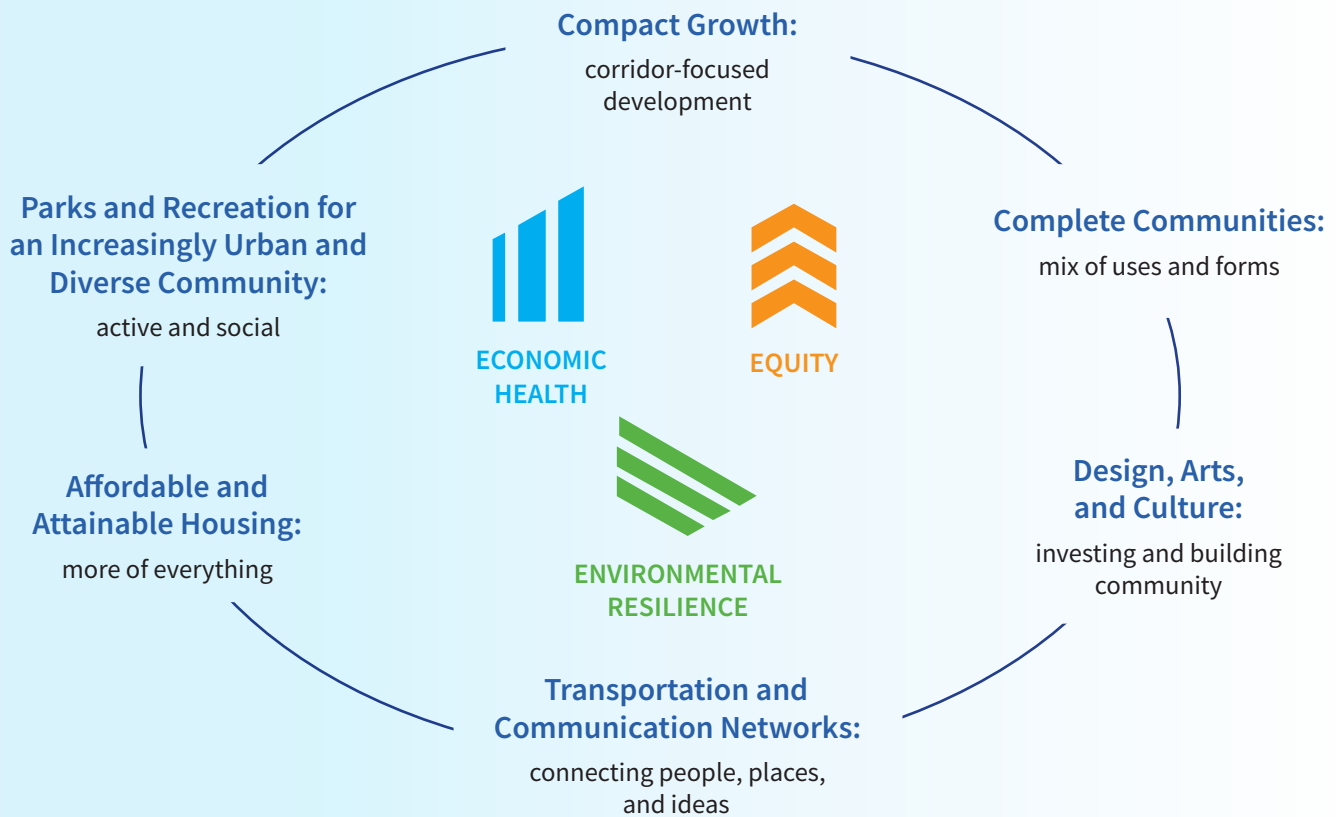
The four types of dots represent a variety of complete communities at various sizes and scales appropriate for their context and the level of activity they can support without overwhelming the natural and man-made resources.

How Thrive Montgomery 2050 is Organized

The Thrive Montgomery 2050 recommendations are organized into six cross-cutting themes, or chapters:

- Compact Growth: Corridor-Focused Development
- Complete Communities: Mix of Uses and Forms
- Design, Arts & Culture: Investing and Building Community
- Transportation and Communication Networks: Connecting People, Places and Ideas
- Affordable & Attainable Housing: More of Everything
- Parks and Recreation: For an Increasingly Urban and Diverse Community: Active and Social

Each theme includes its own set of issues and challenges that are addressed through the Plan's vision, goals, policies and actions.



Thrive Montgomery 2050 Planning Board Draft

The County Council is currently reviewing the Planning Board Draft of the plan and is expected to complete its review and approve the final plan by the end of 2021. Visit [ThriveMontgomery.com](https://www.thrivemontgomery.com) for additional information. Hard copies of the Planning Board Draft can be obtained from the Montgomery Planning Information Counter by calling 301-495-4610 between 9:00 a.m. and 3:30 p.m., Monday – Friday, or by email at MCP-InfoCounter@mncppc-mc.org.