

How would you describe South...

Diverse

Opportunity
for growth to
make it more
equitable

Quiet

Very
Residential

Less
Connected
from the Core

Gateway to DC (may
be good or bad).
People pass through
and don't see what
SS has to offer

A lot of
transportation



**More
Housing**

equity



Active



connects +
with DC
than
downtown



safe biking

Transit-oriented and
dense, but has room
to grow

Feels
disconnected
from the rest
of Silver
Spring

Bikeability
(Infrastructure)
needs to be
improved/grown

South Silver Spring Visioning will focus on....



Where would you like to see more open space?

**Accessible
bathrooms in open
spaces so people
can use a restroom
without having to
use one belonging
to a business**

Having a central open space area because Jesup is far and difficult to access

**Prefer Nooa
side of the
street vs the
Blairs side**

PUBLIC
BATHROOMS
NEED

Acorn Urban Park:
Great Spot. Show
more love to it.
Make it more green
and spots for kids to
play. Build it up.
Would be a great
addition to
community



cut-throughs to other parts. when walking in that area to or from any businesses, it seems like its difficult to navigate w/o ending up going through parking lots or walking through long streets with too-few crosswalks,

**The Blairs
Parking Lot
(shopping
Center area
where Giant is
located)**

Connectivity to the Metro station is an issue

parking
lot

**empty
lot**

More mixed use and retail spaces esp under parking garages. It would help make it more of a destination spot

No Sidewalks along East West Highway near Denizens

**NOOA
sidewalks
are better**

**sidewalk
near
Denizens
= bad**

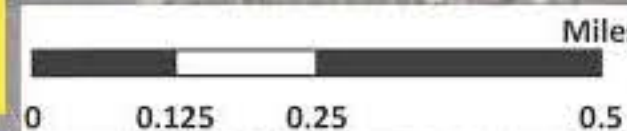
Newell St
closure -
favorable
place to
extend the
park

JB meet up
but too far
away

Legend

■ MNCPPC owned

■ Privately owned



HOME RETAIL

POPS: Do you use these public spaces?

nice to have
picnic
tables



SIGNAGE

very
uninviting

Signage may help, but it is a bandaid to the problem of an open, public feeling.

acknowledgment
that is public



VERIDIAN

green space elevated,
not as useful



seating areas

fence = safety/grade
issue

PEARL



GATE

not clear if the building is
designated as public; does
not feel welcoming

More signage
that
designates
where
cut-throughs
are



8045 NEWELL



GALAXY

Newell Street: Like the seating and picnic tables. Others don't necessarily foster that community engagement

Seating options are limited

Seem like places you more so walkthrough

They don't look public and are privately owned

It's unclear if spaces are designated for the buildings or for the general community. Doesn't feel open

Surprised that it's meant for public use

The Veridian: Bigger park, great seating, not much green space which isn't so great. More often for dog walkers

The Pearl: Nice space, but a lot of fencing not very clear if it's open

Jesup Blair Park: Brainstorm!

Jesup is usually accessed by crossing from 13th Street and E/W Highway. Walk on the side of Moco College

Not many safe and comfortable ways to access Jesup

for bikes are really bad. I've tried to bike through the park to get to Blair Road heading south, and you end up stuck on a narrow sidewalk for a long ways with no way to get down to the street; there's not a single ramp or smooth grade. Having

Celebrate the history of the park/area

**More markers
and signage.
Make the
House seen**

Don't know much about this park and what's available

celebrate history of the building and park

walking loop

fence is not
welcoming, entries
are not clear

Isn't much place to gather because blocked by trees. Larger spaces to present more openly: flying kites, seeing a concert etc.

**Heightening
play areas to
make them
more
noticeable**

Big Georgia Ave barrier. Not safe. Park feels isolated and sterile

Create more things to do for people that may not play tennis, soccer, and playground. Maybe haunted house tours?? Tours of the House etc.

Is it ADA accessible? If not, it's not a great place for people with disabilities

**More
public
events!**

peripheral location

Georgia =
barrier
open

house =
hidden

Playground

celebrate
play areas

Soccer
field

Tennis courts

In comparing to Rock Creek, the space could use public grills and picnic tables - in addition to walking loops and bathroom facilities etc.

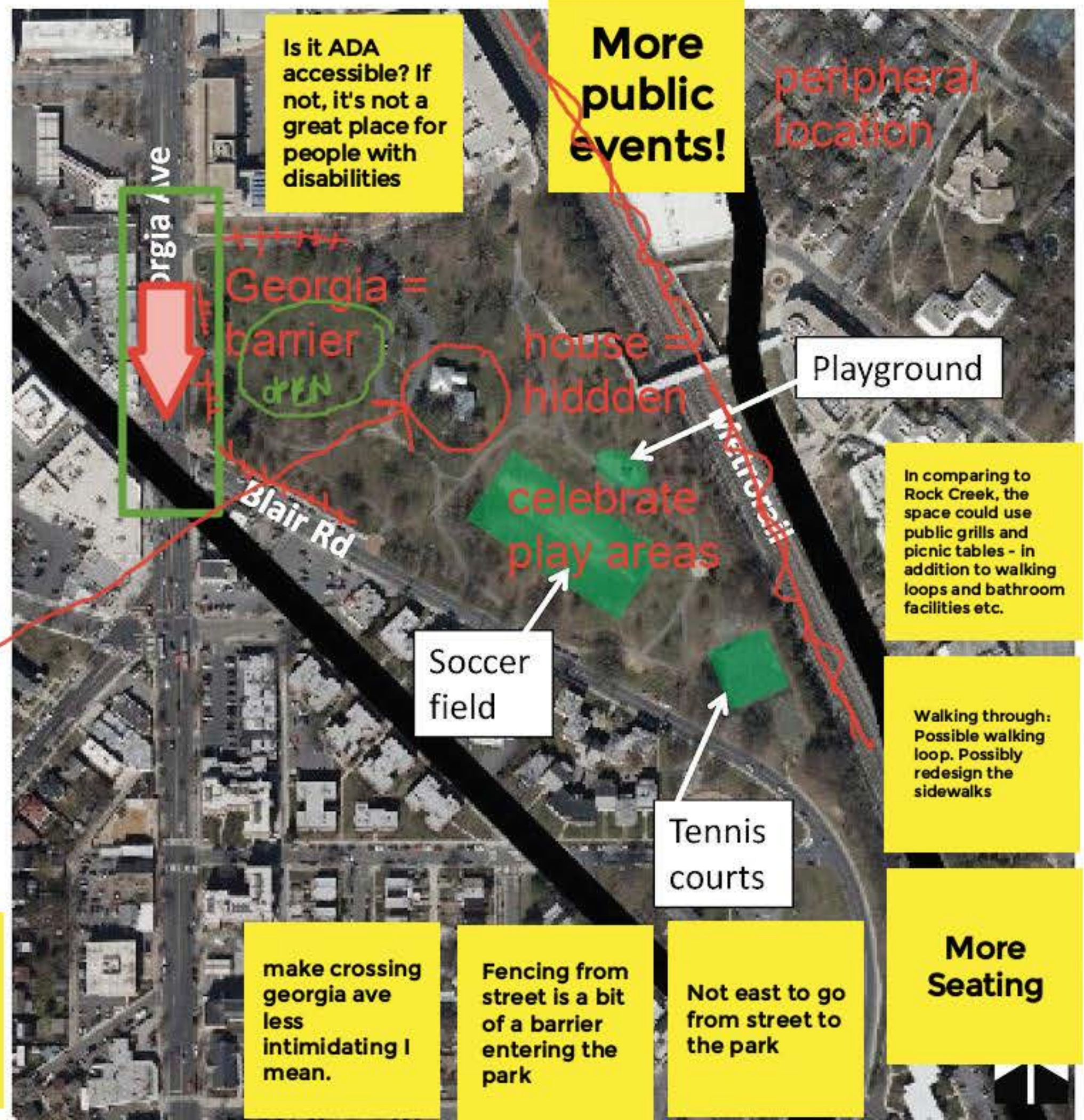
Walking through:
Possible walking
loop. Possibly
redesign the
sidewalks

More Seating

make crossing
georgia ave
less
intimidating I
mean.

Fencing from street is a bit of a barrier entering the park

Not east to go from street to the park



Jesup Blair Park: Brainstorm!

Context Images



Georgia Ave



Georgia Ave and Blair Rd



Jesup Blair Park: Brainstorm!

Context Images



Georgia Ave at Jesup Blair Drive



Blair Rd



Jesup Blair Park: Brainstorm!

Context Images



Jesup Blair Park: Brainstorm!

What would bring you to
Jesup Blair Park?

How can this park be an
asset for Silver Spring?



East-West connections across the Metrorail

Not very clear where to crossover over the tracks to access hub

Difficult to bike at Georgia Ave crossing.

Very stressful to cross connections

Difficult to decide between Colesville and Georgia Ave Crossing

Anywhere that gives bikes trouble will probably give ADA trouble

More pedestrian connections

The rail really is a barrier would help if access to the hub was more clear or better connections to access the hub

Be aware of grade differences in stairs

Pedestrian overpass would be great at Acorn

Georgia Ave crossing is dark, scary, uncomfortable esp has a woman

Longer times to cross street

The crosswalk timer takes very long

The lighting isn't good at Georgia Ave crossing

Colesville and East West is massive to cross as a pedestrian. Also takes very long to cross intersection.

Signals for crosswalks are also often out of order and not quickly fixed.

The hill on East/West doesn't help with speed and sight to see pedestrians

Love the transit center!

improve pedestrian/bike connection @ transit ctr

elevated plaza

potential crossing

rail = barriers

timer = limited

dark and narrow = scary lighting condition

Prioritize pedestrians

grade changes and crossings = prioritize pedestrian and bike

Legend

Cultural	Multi-Family
Industrial	Commercial (Office + Retail)
Institutional/Civic	Parks
Mixed-Use: Residential	Parking and Transportation
Mixed-Use: Commercial	Single Family Detached



Very exposed when crossing to get to transit center. Scary



East-West connections: How do you cross the rail?

What could be improved?



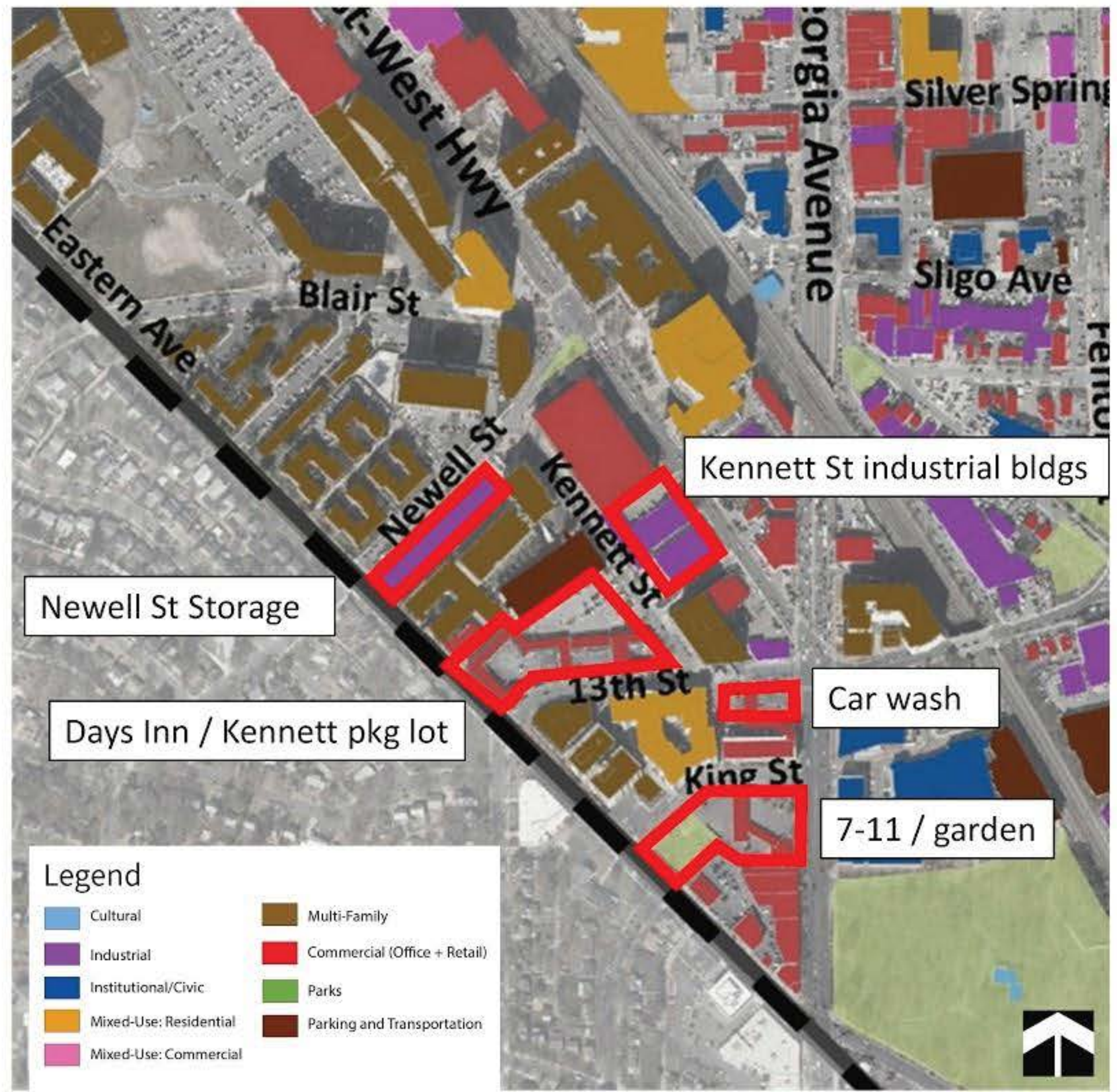
East-West connections: How can this intersection be improved:



Opportunity Sites

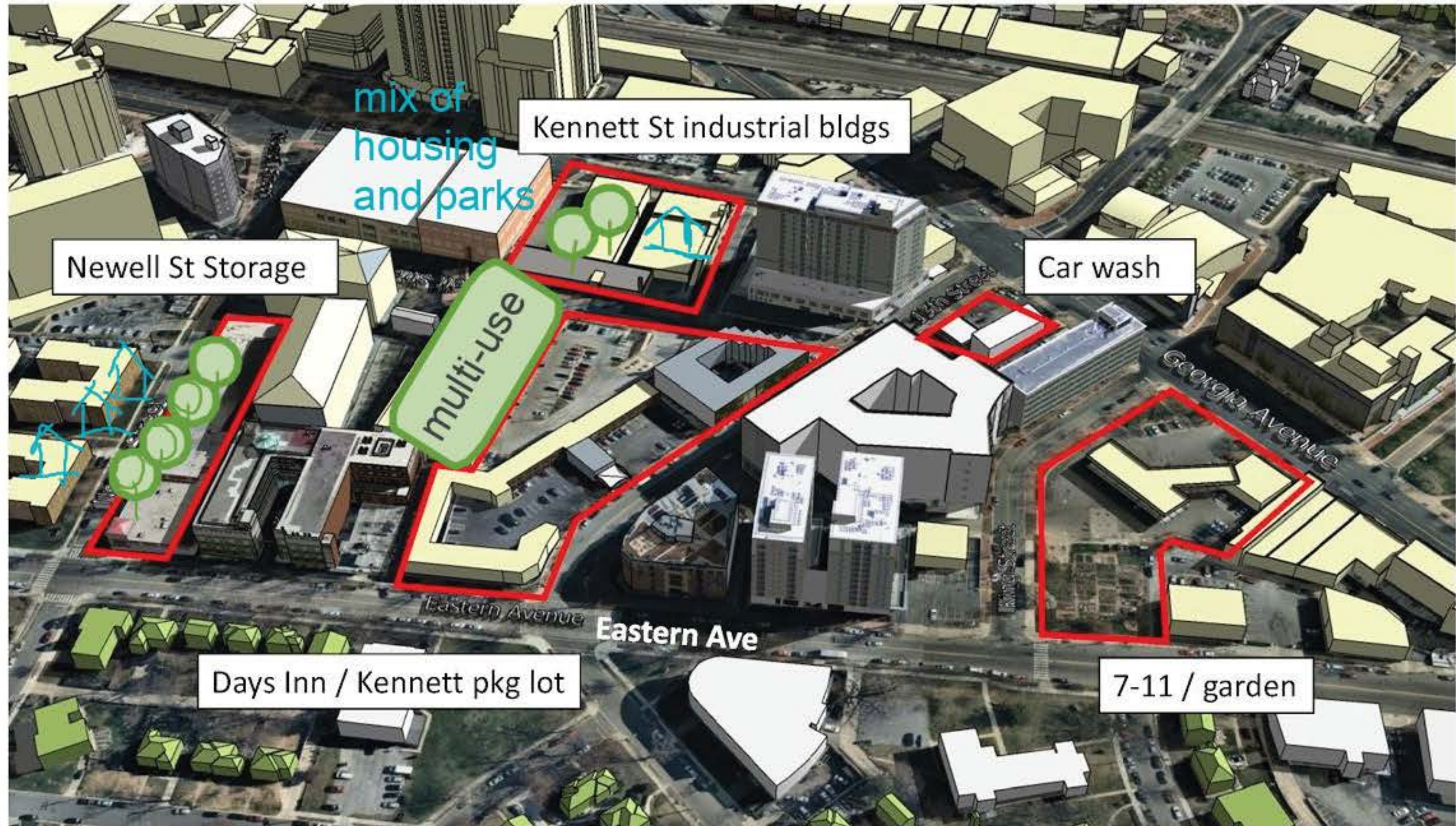
What would you like to see here?

- Newell St storage facility
- Kennett St industrial buildings
- Days Inn site + parking lot
- Car Wash
- 7-11 / gas station / garden



Opportunity Sites

Looking east from DC over South Silver Spring



Opportunity Sites

What would you like to see here?

Newell: like to see park or remain unchanged. Worried about property value if it would change

Housing affordability

Newell: Become housing

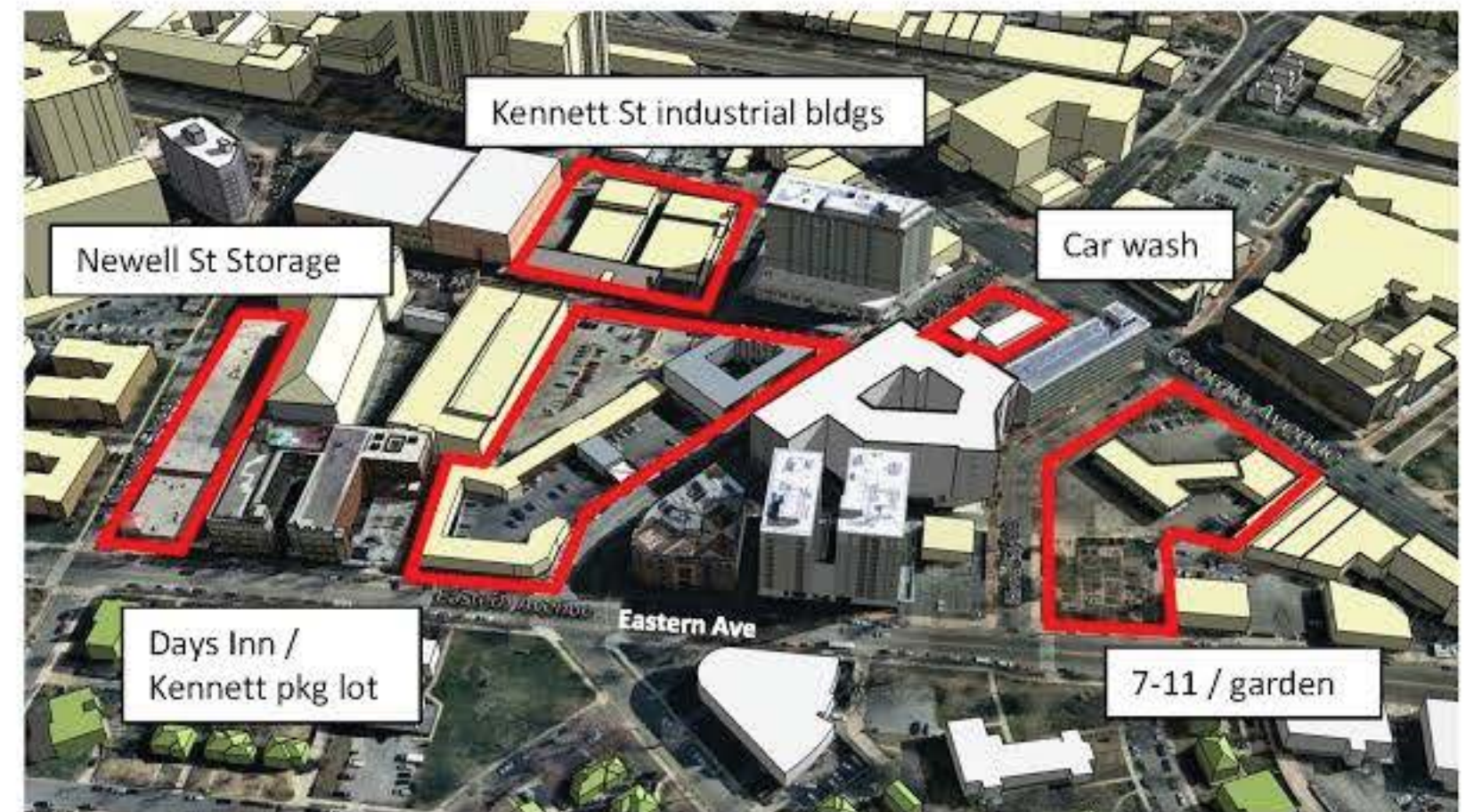
Days Inn-Lower priority not really an issue

Something like Thayer (open parking and housing) at Newell

Newell could potentially block natural light to residences around it

Appreciate the PPD parking passes

we need to try to invite more retail/restaurants/etc on this side of the railroad



Make parking garages multiuses

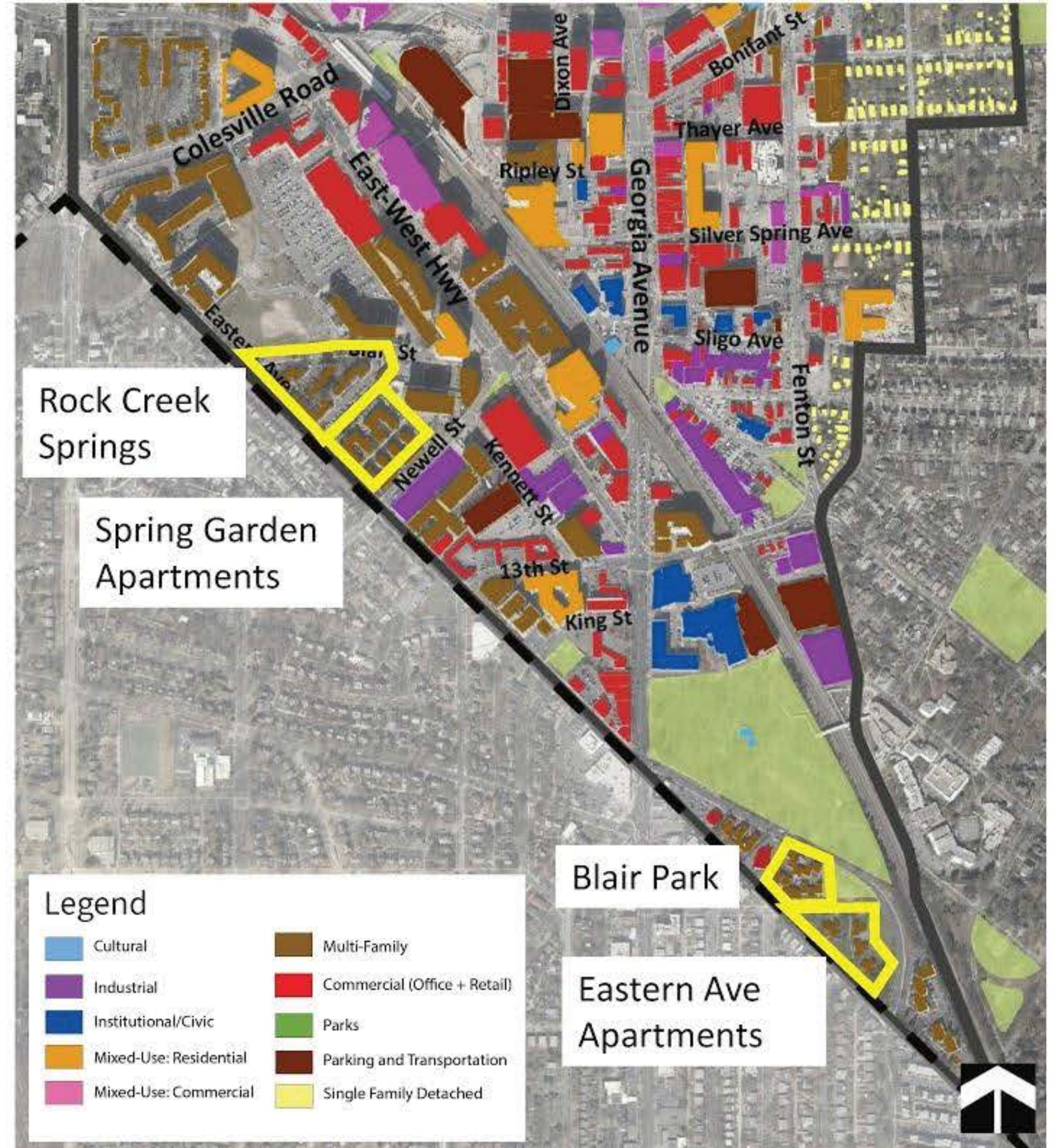
Having more housing around parks and are mixed use. Something a single person can afford

Garden Apartment Sites

Are these sites valued by the community?

What are the strengths of these properties (physical/social/environmental)?

Are there changes the community would like to see to these properties?



What else should we discuss?

