



# Great Seneca Science Corridor

MINOR MASTER PLAN AMENDMENT

**MCDOT**

## Great Seneca Transit Network

*A new transit network to support mobility,  
access and economic growth in the Great  
Seneca area.*

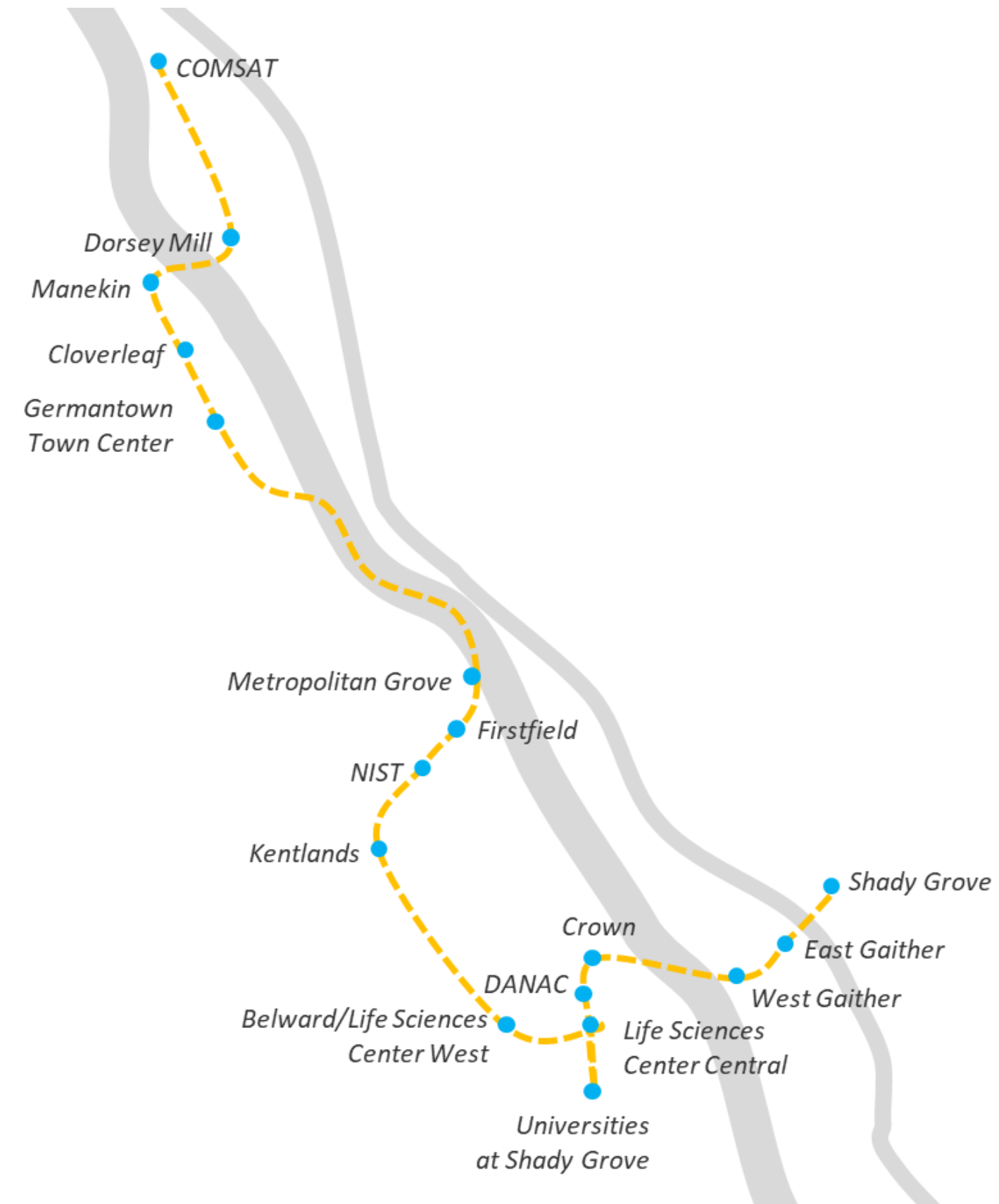
## CORRIDOR FORWARD

1-270 Transit Plan



# Corridor City Transitway (CCT)

- Planned BRT to connect GSSC to residential neighborhoods and transit options (Metro, MARC)
- Centerpiece of the vision and development requirements of the GSSC Master Plan
- Funding is stalled, and near-term implementation is not realistic



# Three Concurrent Planning Efforts

## GSSC Minor Master Plan Amendment

- Plan to facilitate growth of the life science industry. Phase 1 to focus on plan staging.
- Uncertain funding future of the CCT has stymied development in the GSSC

## Great Seneca Transit Network

- Near-term transit improvements to serve commuters and residents in the GSSC area
- The CCT remains the long-term vision

## Corridor Forward: I-270 Transit Plan

- Analysis and prioritization of long-term transit options along the I-270 corridor
- The CCT is one of the options under evaluation



# Varying (Anticipated) Timelines

## GSSC Minor Master Plan Amendment

- Phase 1 to be approved in 2021
- Phase 2 anticipated to be underway in 2022 and approved in 2024

## Great Seneca Transit Network

- Planning and design expected to be complete in 2022
- Initial network launched in 2024
- All improvements implemented by 2026

## Corridor Forward: I-270 Transit Plan

- Plan approval in 2022
- Long-term plan, undefined implementation timeline







# Great Seneca Science Corridor

## MINOR MASTER PLAN AMENDMENT





# Critical Factors

1. The future of the CCT funding is uncertain with no plans for further work.
2. Non-residential development in the area cannot proceed.
3. There is a pressing need to accommodate life science development to support the county's economic health, employment growth and further advancements in science.



# Amendment Approach

- Phase 1: technical minor amendment to evaluate the existing
- Phase 2: a comprehensive amendment to the 2010 Plan following the approval and adoption of Corridor Forward

- October 2020 Phase 1 Scope of Work
- April 2021 Phase 1 Planning Board Public Hearing
- October 2021 Phase 1 Council Public Hearing
- January 2022 Phase 1 Council Approval
- May 2022 Corridor Forward Plan Council Approval
- July 2022 Phase 2 Initiates







- Support economic development and opportunity in Montgomery County.

Amendment will:

- Review progress of the 2010 Great Seneca Science Corridor Master Plan;
- Amend staging requirements to enable growth of the of the life science industry.

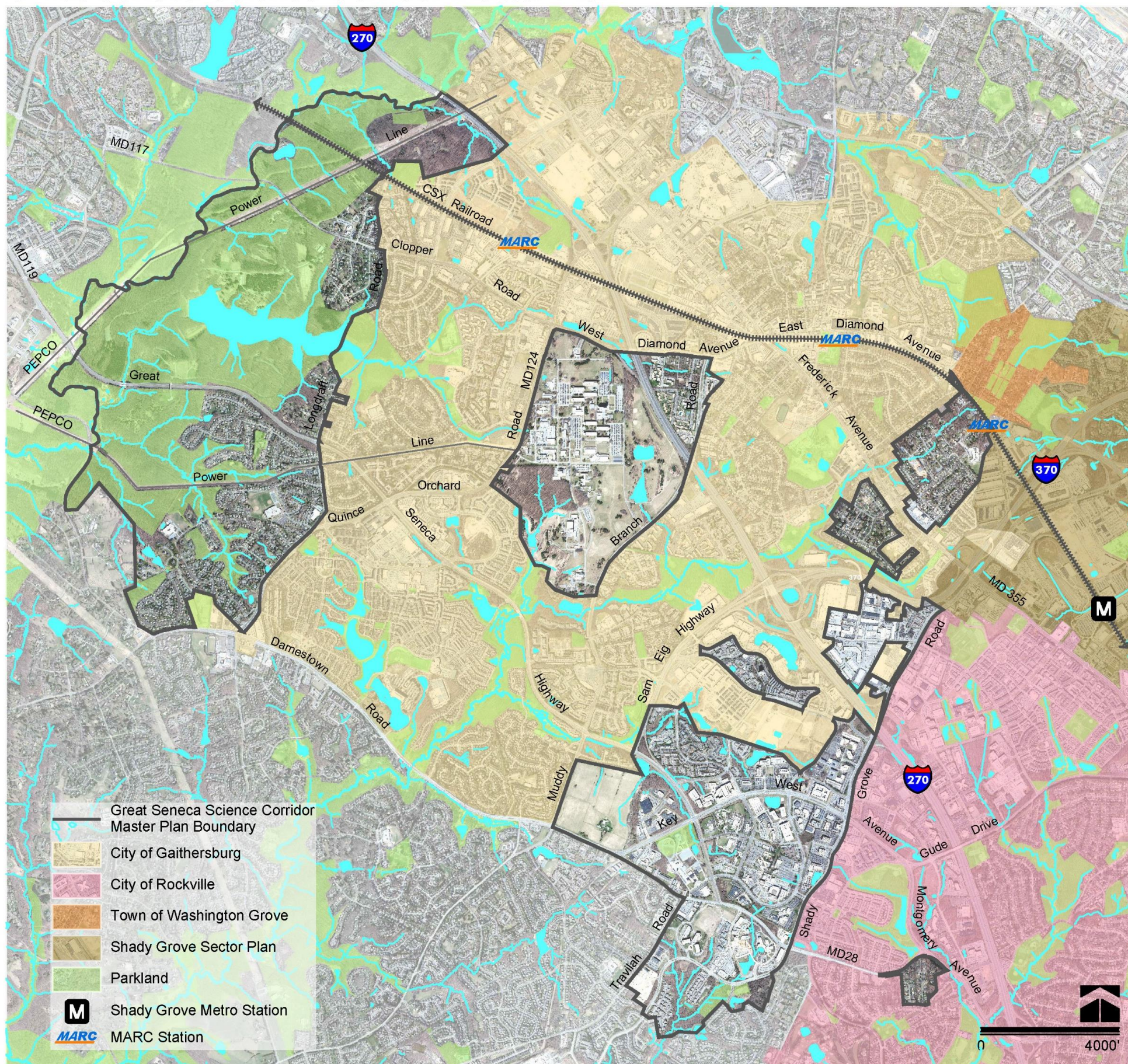
## Purpose





# Plan Amendment Area

- Focus on Life Science Center
  - Area affected by staging
  - Excludes NIST and Quince Orchard neighborhood
- Bordered by:
  - City of Gaithersburg
  - City of Rockville
  - Washington Grove





# 2010 Great Seneca Science Corridor Master Plan Vision

*“This Plan establishes a blueprint for the LSC that includes an expanded, first-class medical center, research facilities, academic institutions, and an array of services and amenities for residents, workers, and visitors. It will have an open space system that incorporates the area’s natural environmental features into a larger network, connecting destinations by paths and trails, and providing opportunities for a range of outdoor experiences.”*

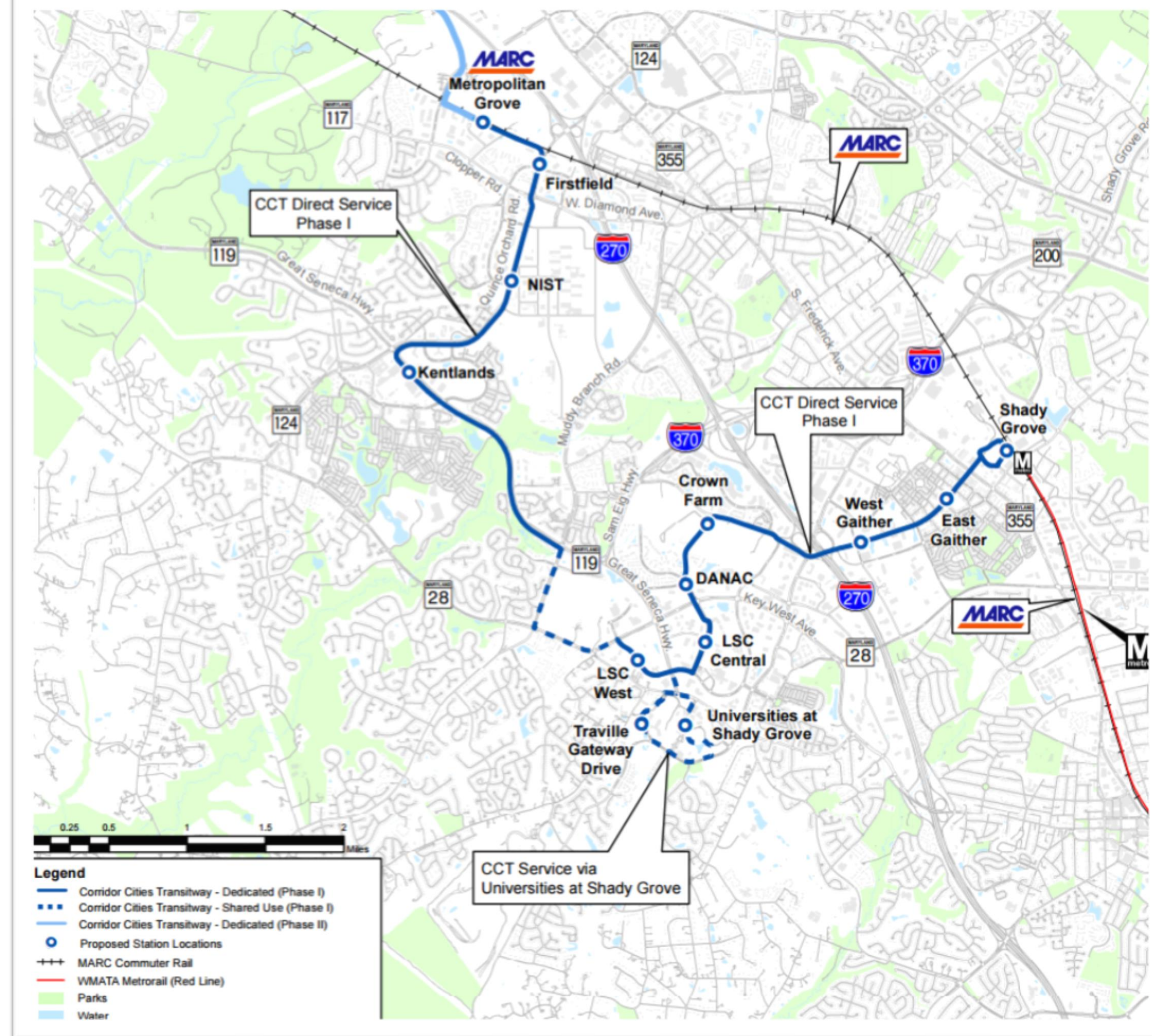




# 2010 Great Seneca Science Corridor Master Plan

## Transit

*“Transit is an essential element of this Plan and is the basis for the land use and zoning recommendations. A strong public and private commitment to the Plan’s transit proposals will help ensure that the LSC is connected internally as well as to the rest of the Corridor.”*

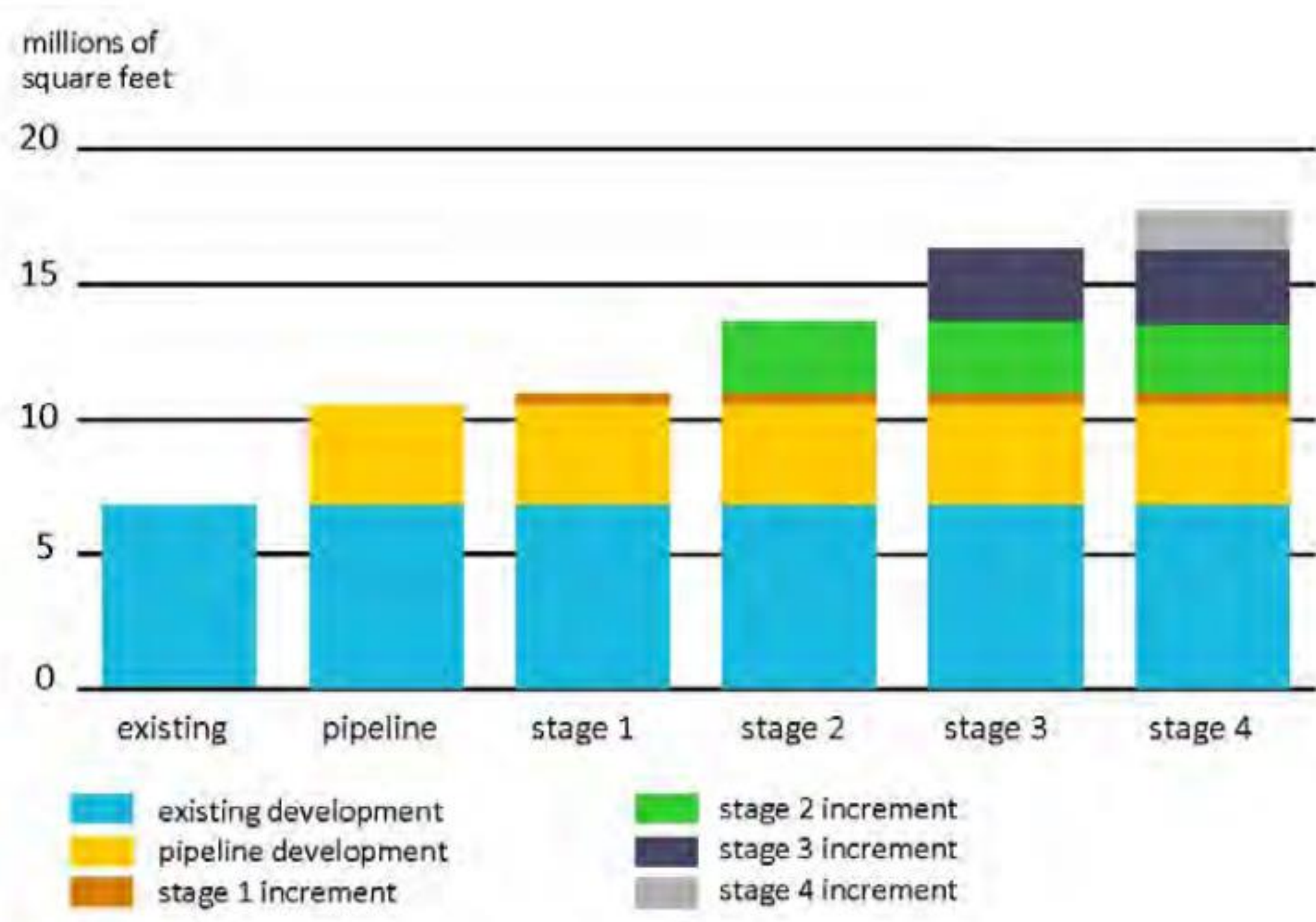




# 2010 Great Seneca Science Corridor Master Plan

## Staging

- Balance growth and development with public investments
- Established four stages of development, with CCT as the centerpiece



# Staging status

- Currently in stage 1
- 2.47 Million Square Feet of non-residential development remain undeveloped in the pipeline
- 0 square feet non-residential capacity remain in stage 1
- 2,189 residential units of capacity remain in stage 1





# 2010 Vision Progress

- Life sciences industry is central to county economic health, it:
  - Continues to grow, providing jobs and revenue.
  - Has expanded in the pandemic
  - Provides jobs to a diverse set of employees.
  - Is potentially a driver of equitable economic development.
  - Clusters in the Life Sciences Center





# 2010 Vision Progress

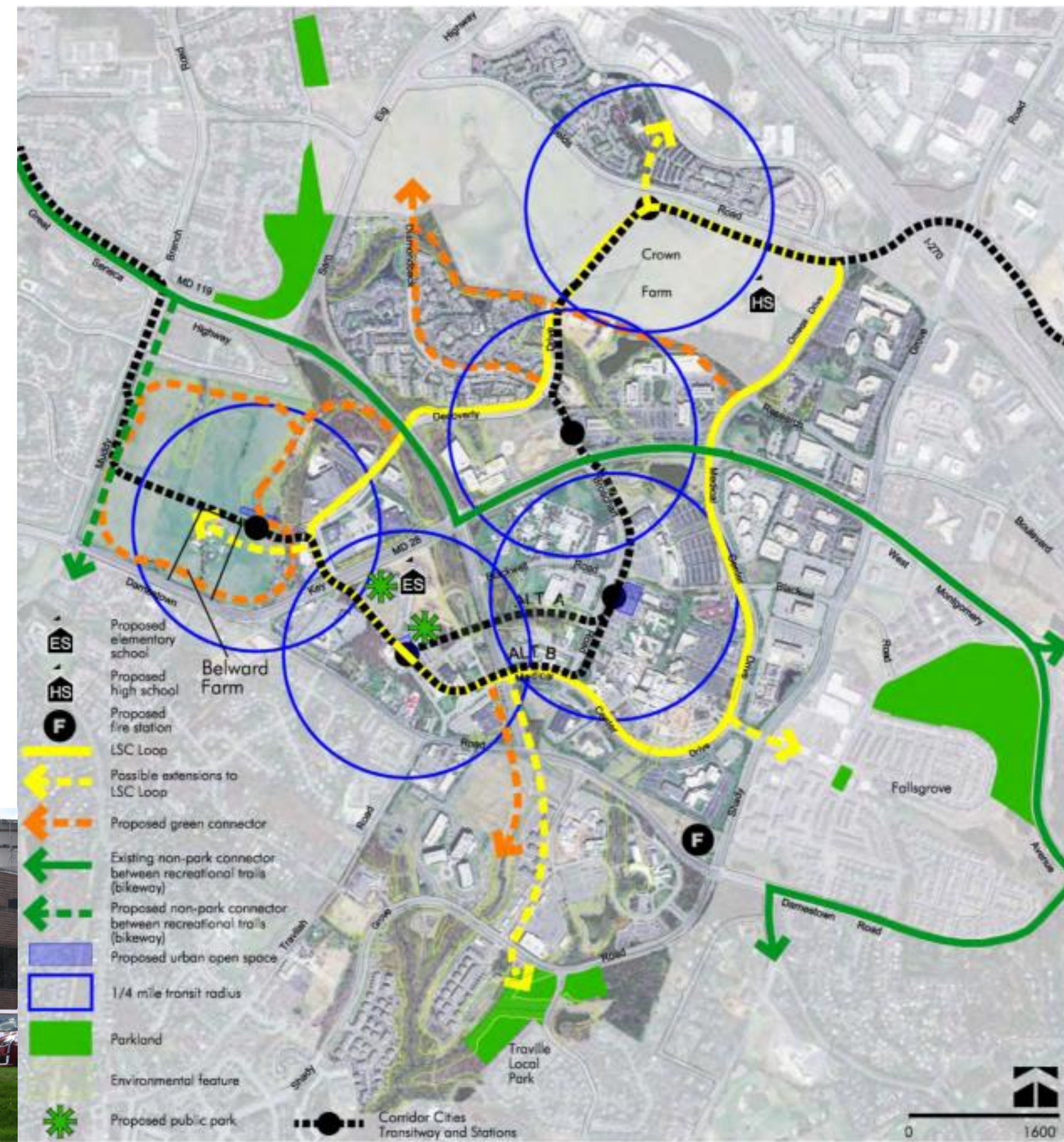
- Residential market is thriving, continuing to grow and deliver.
- LSC Loop Trail has been funded
- New bicycle and pedestrian infrastructure installed.





# Barriers to Achieving the 2010 Vision

- Uncertain future of the Corridor Cities Transitway
- Available office space may not meet needs





# Departures from the 2010 Vision

- Density is lower than anticipated, key properties remain undeveloped
- Design remains spread out and auto-centric
- Key park and open space amenities remain undelivered





# Considerations

- Existing buildings do not meet life science industry needs
- New projects have been built out between 75,000 and 180,000 square feet
- Lab and R&D require more square feet per employee
- Traffic has remained stable over time



# Preliminary Recommendations

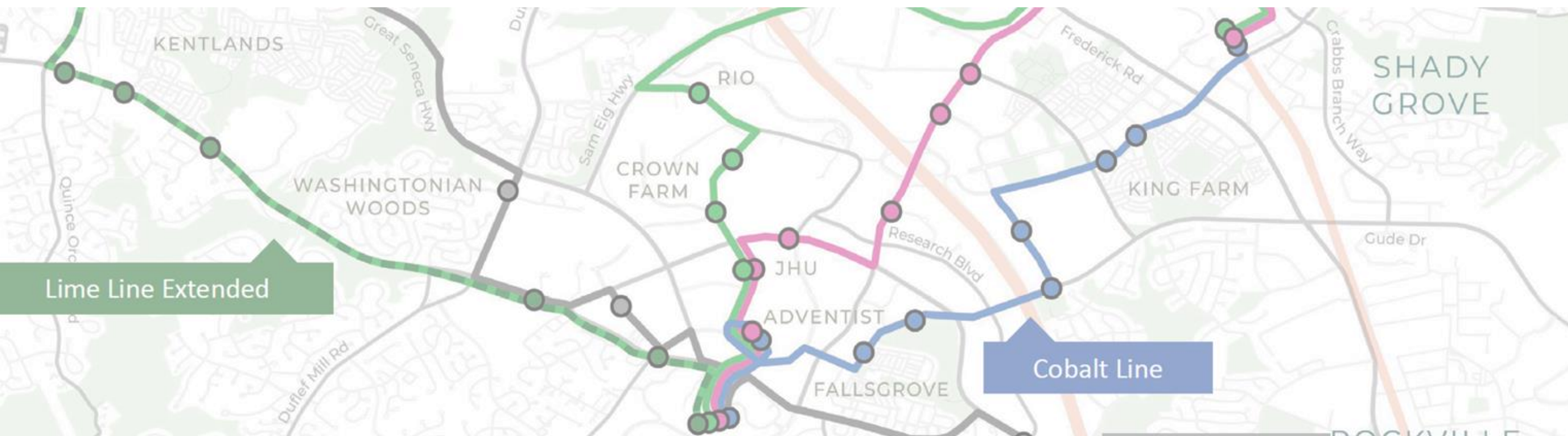
- Recommending providing limited non-residential development capacity upon approval of the Amendment
- Considering releasing additional future development capacity paired with requirements for investment in transportation improvements





# Phase 2 Opportunities

- Explore ways to meet the immediate community transportation needs;
- Evaluate long-term transit options;
- Reevaluate staging, land use, zoning in the area.





The logo for MC DOT, with 'MC' in blue and 'DOT' in green, is positioned in the top left corner. The background of the entire slide is a blurred cityscape at dusk or dawn, featuring a prominent modern building with a glass facade and other urban structures.

**MC DOT**

# ***Great Seneca Transit Network***

***A new transit network to support mobility,  
access and economic growth in the Great  
Seneca area.***



# GSSC's Needs and Opportunities



## Economic Recovery

Great Seneca Science Corridor is a key piece of the County's biotech, life sciences economy.



## Improved Access

Hub for healthcare, research, and education.



## Access ⇔ Equity

Increase equity through better access to healthcare and jobs.



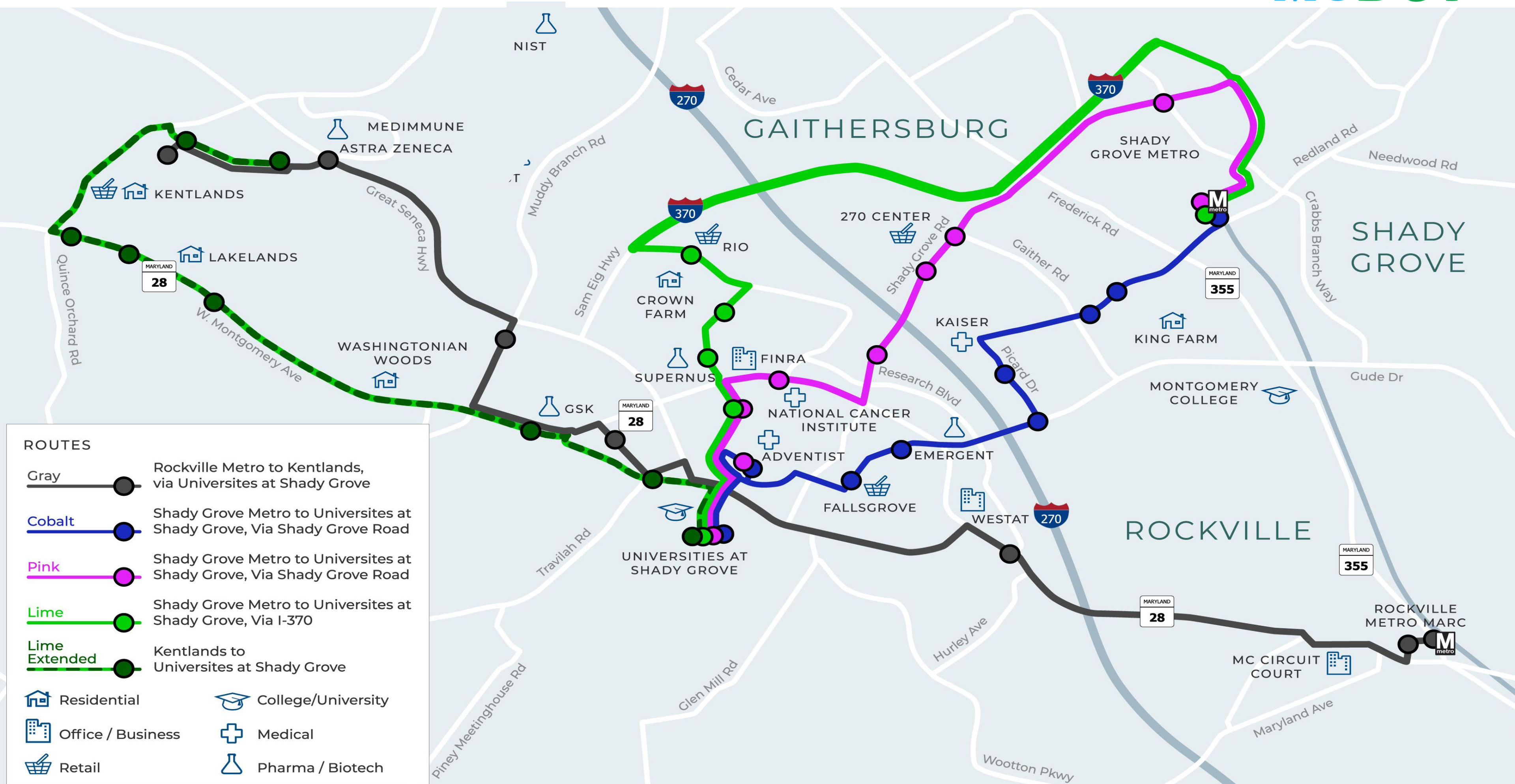
## Connectivity & Collaboration

Direct bus transit for residents, workers, patients, and students.





# Great Seneca Transit Network



**ROUTES**

- Gray** ● Rockville Metro to Kentlands, via Universities at Shady Grove
- Cobalt** ● Shady Grove Metro to Universities at Shady Grove, Via Shady Grove Road
- Pink** ● Shady Grove Metro to Universities at Shady Grove, Via Shady Grove Road
- Lime** ● Shady Grove Metro to Universities at Shady Grove, Via I-370
- Lime Extended** ● Kentlands to Universities at Shady Grove

Residential	College/University
Office / Business	Medical
Retail	Pharma / Biotech

NIST

GAITHERSBURG

SHADY GROVE

ROCKVILLE

ROCKVILLE METRO MARC

UNIVERSITIES AT SHADY GROVE

SHADY GROVE METRO

KING FARM

MONTGOMERY COLLEGE

WESTAT

FALLSGROVE

NATIONAL CANCER INSTITUTE

SUPERNUS

CROWN FARM

270 CENTER

RIO

KENTLANDS

LAKELANDS

WASHINGTONIAN WOODS

GSK

FINRA

KAISER

MC CIRCUIT COURT

Cedar Ave

370

270

355

MARYLAND 28

MARYLAND 28

270

MARYLAND 355

MARYLAND 28

Muddy Branch Rd

Sam Eig Hwy

Shady Grove Rd

Gaither Rd

Redland Rd

Needwood Rd

Crabbs Branch Way

Gude Dr

Travilah Rd

Glen Mill Rd

Hurley Ave

Wootton Pkwy

Maryland Ave

Great Seneca Hwy

Quince Orchard Rd

W. Montgomery Ave

Piney Meetinghouse Rd

# Approach to Rollout

5 YEARS

STAGE 1  
INITIAL NETWORK

STAGE 2  
EXPANDED NETWORK

LAUNCH

ENHANCE

LAUNCH

ENHANCE

**LAUNCH:**  
Service improvements  
and station  
enhancements.

**ENHANCE:**  
Additional infrastructure  
elements.

Iterative process of project development  
to bring service to communities faster.



# Initial Network

## Lime Line

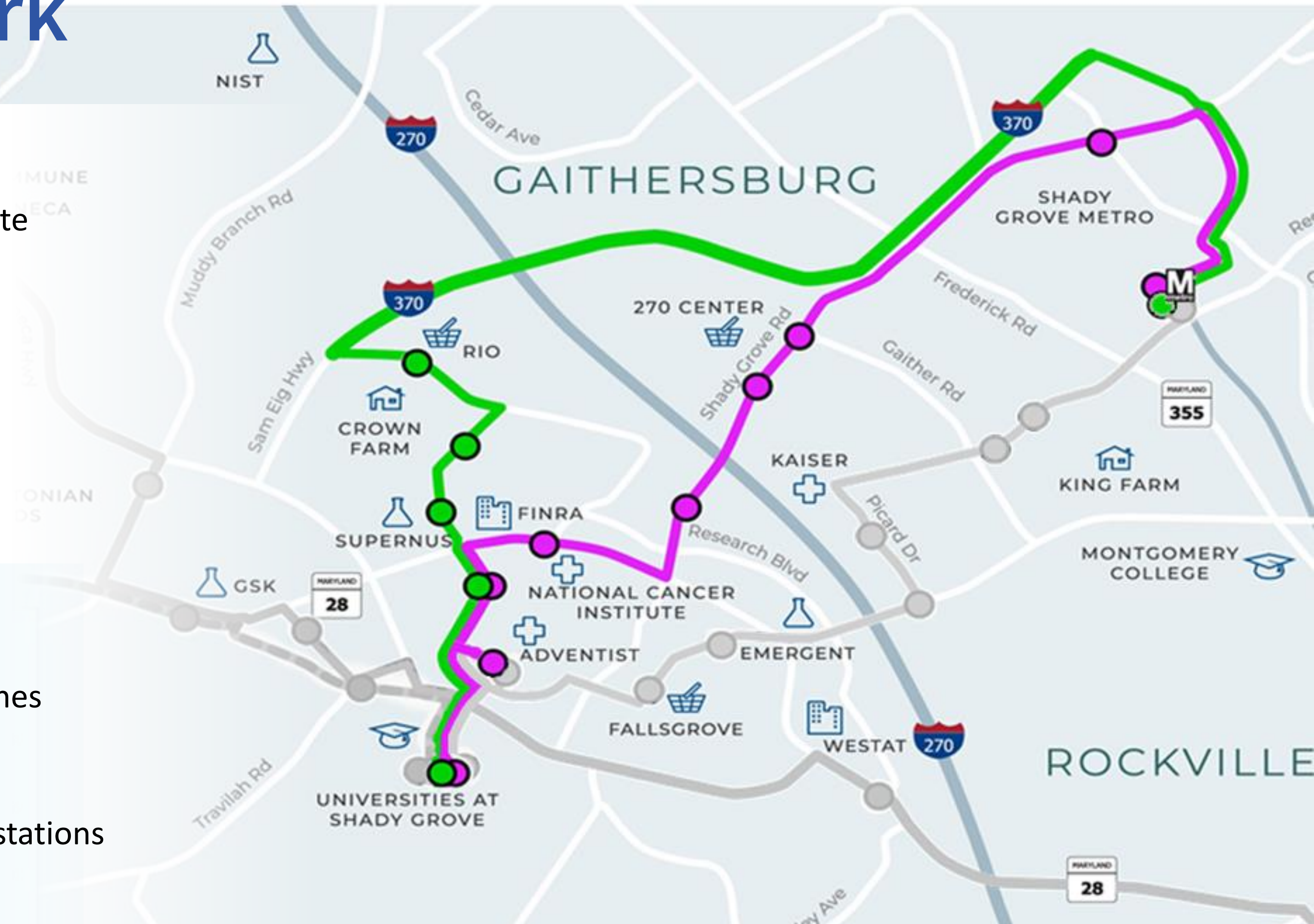
Uses I-370 to provide express route to RIO, Crown Farm, and heart of Life Science Center.

## Pink Line

Links busy Shady Grove corridor with Life Sciences Center.

## KEY FEATURES

- ✓ 1.75 miles of dedicated bus lanes
- ✓ Transit Signal Priority
- ✓ New roadway connections
- ✓ Distinctive, easily identifiable stations with passenger amenities





# Expanded Network

## Gray Line

Connects Kentlands to Life Sciences Center. Provides key east-west connection to Rockville.

## Cobalt Line

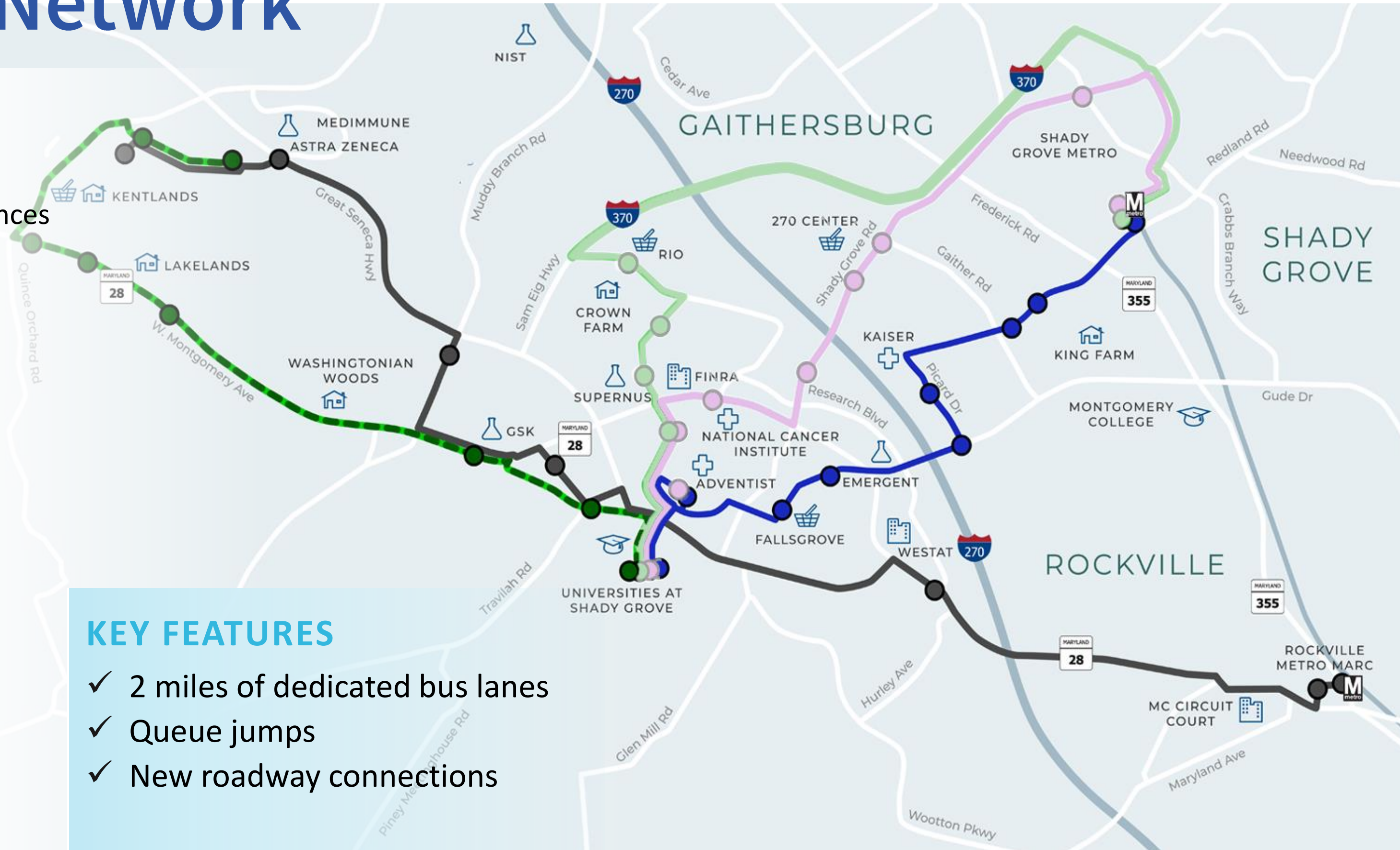
Links Falls Grove, King Farm, and Piccard corridor with Life Sciences Center.

## Lime Line Extended

Provides access to Route 28 corridor and west side of GSSC Master Plan area.

### KEY FEATURES

- ✓ 2 miles of dedicated bus lanes
- ✓ Queue jumps
- ✓ New roadway connections





# Operational Improvements

- Bus lanes make trips **faster and more reliable.**
- New **bus shelters with real-time information** give riders a better experience.
- **Frequent, high quality** service for easy connections.





# Great Seneca Transit Network Service Implementation Timeline





Initial Network Launches

Expanded Network Launches

All Improvements Implemented

2023

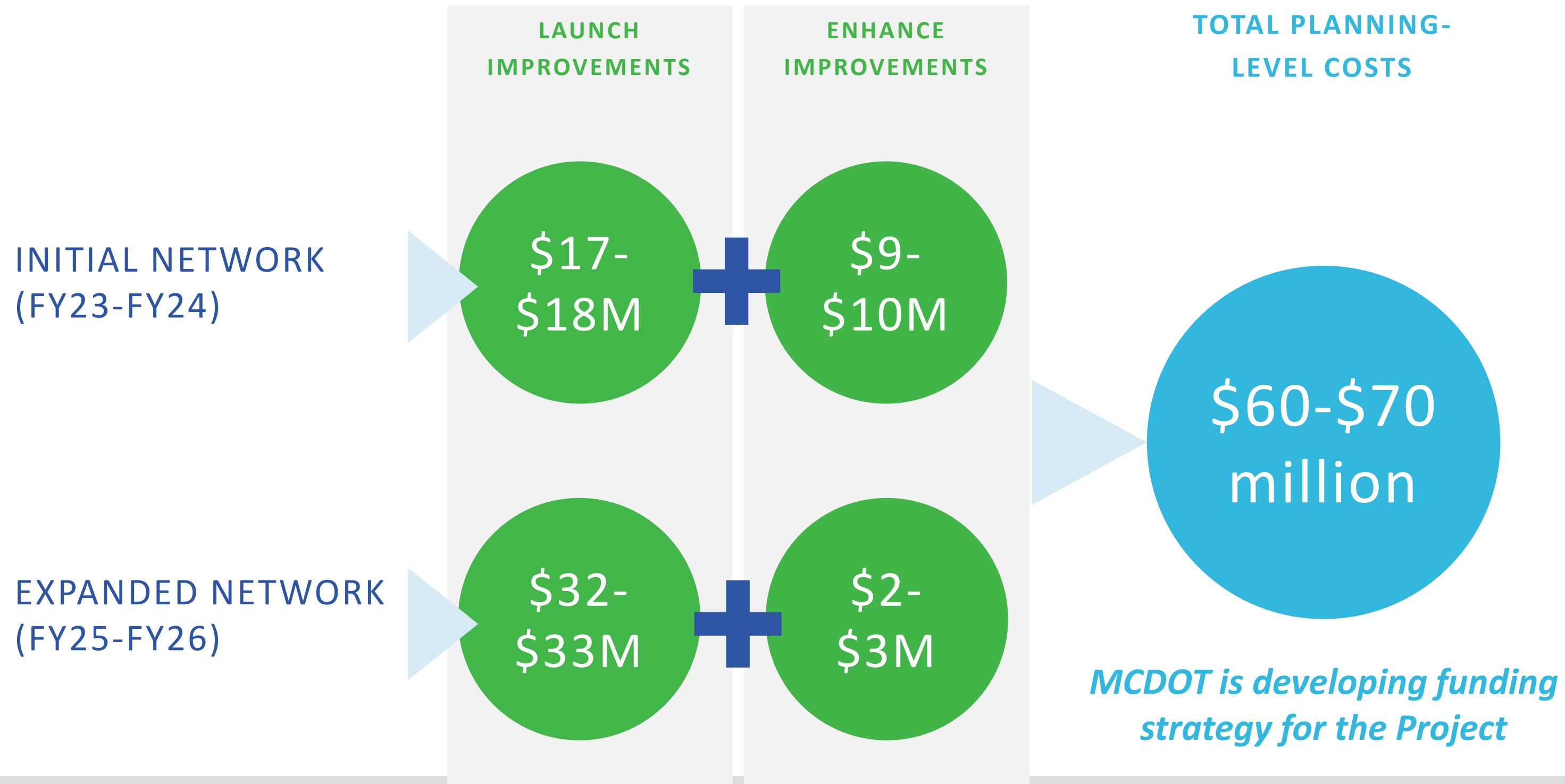
2025

2026





# Capital Costs





# Great Seneca Transit Network



**Economic Recovery**



**More Access**



**Better Mobility**



**Innovative Project Delivery**



**High Quality Transit**



**Neighborhood Connectivity**



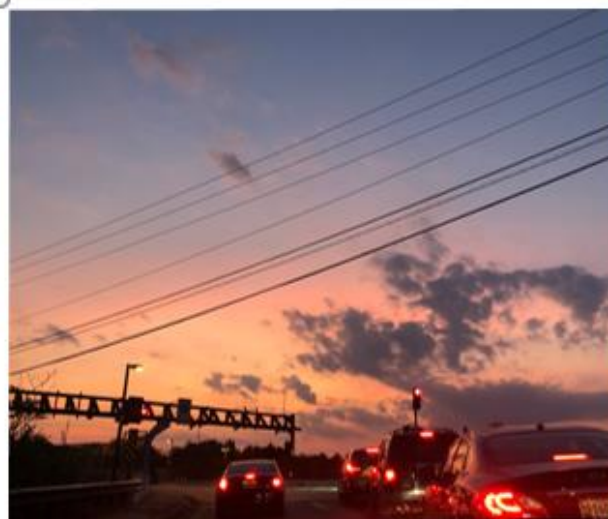


# Next Steps

- Continue to collaborate with partners and stakeholders.
- Advance planning and design in Summer 2021.







# CORRIDOR FORWARD

1-270 Transit Plan



Montgomery Planning





# Project Purpose

The purpose of the Corridor Forward Plan is to strategically **evaluate and prioritize transit** opportunities serving major demand points along the I-270 Corridor between the City of Frederick and Tysons.





# Plan Milestones

## Spring- Fall 2020

- Inventory mode attributes
- Develop conceptual transit options

## Winter 2021

- Narrow to six key options
- Develop metrics and approach to compare options
- Evaluate the options

## Spring 2021

- Prioritize options based on metrics

**We are here!** →





# Plan Milestones

## Summer 2021

- Solicit feedback and solidify priorities
- Develop preliminary recommendations

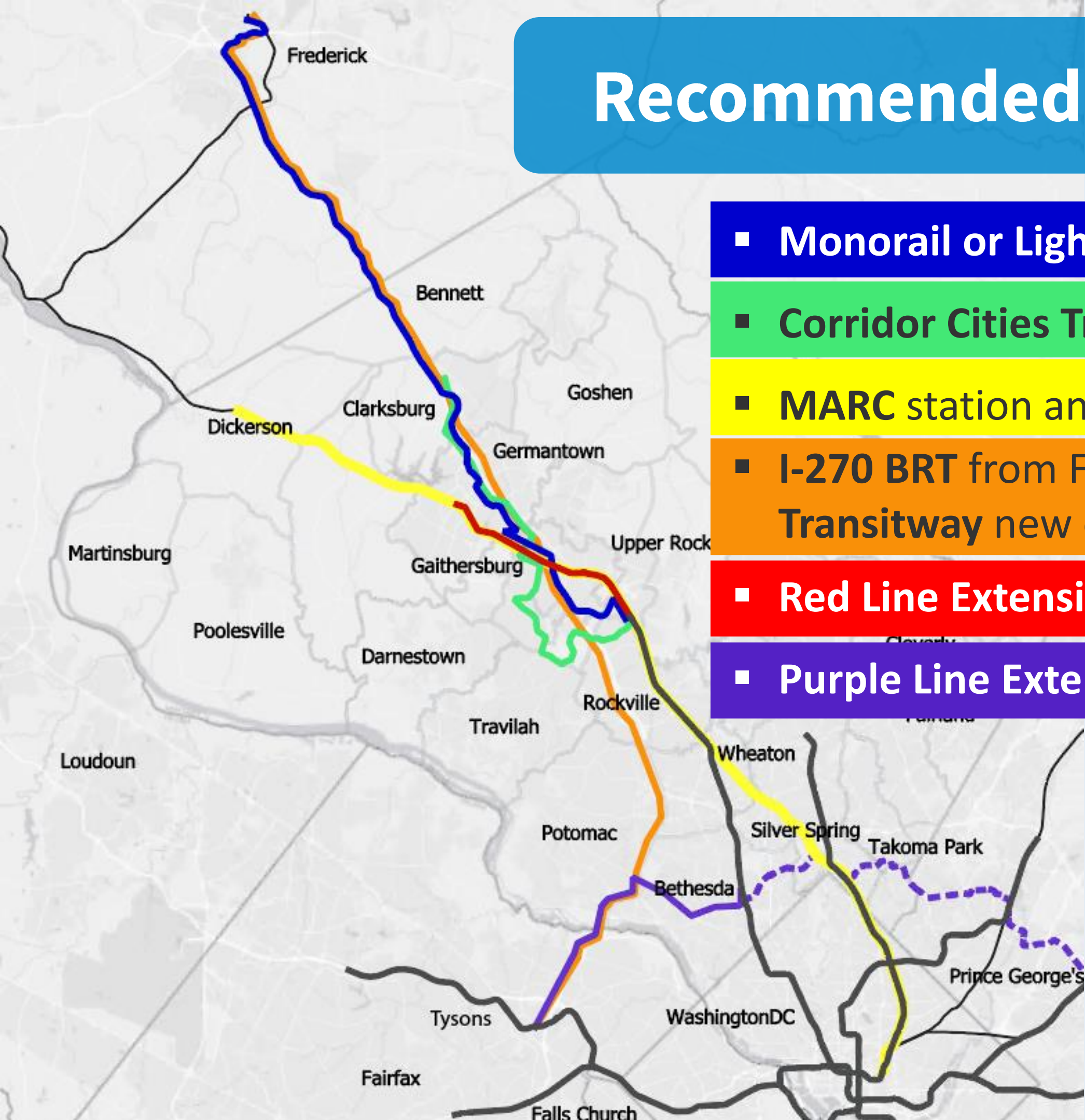
## Fall 2021

- Refine preliminary recommendations
- Develop implementation plan





# Recommended Options for Detailed Study

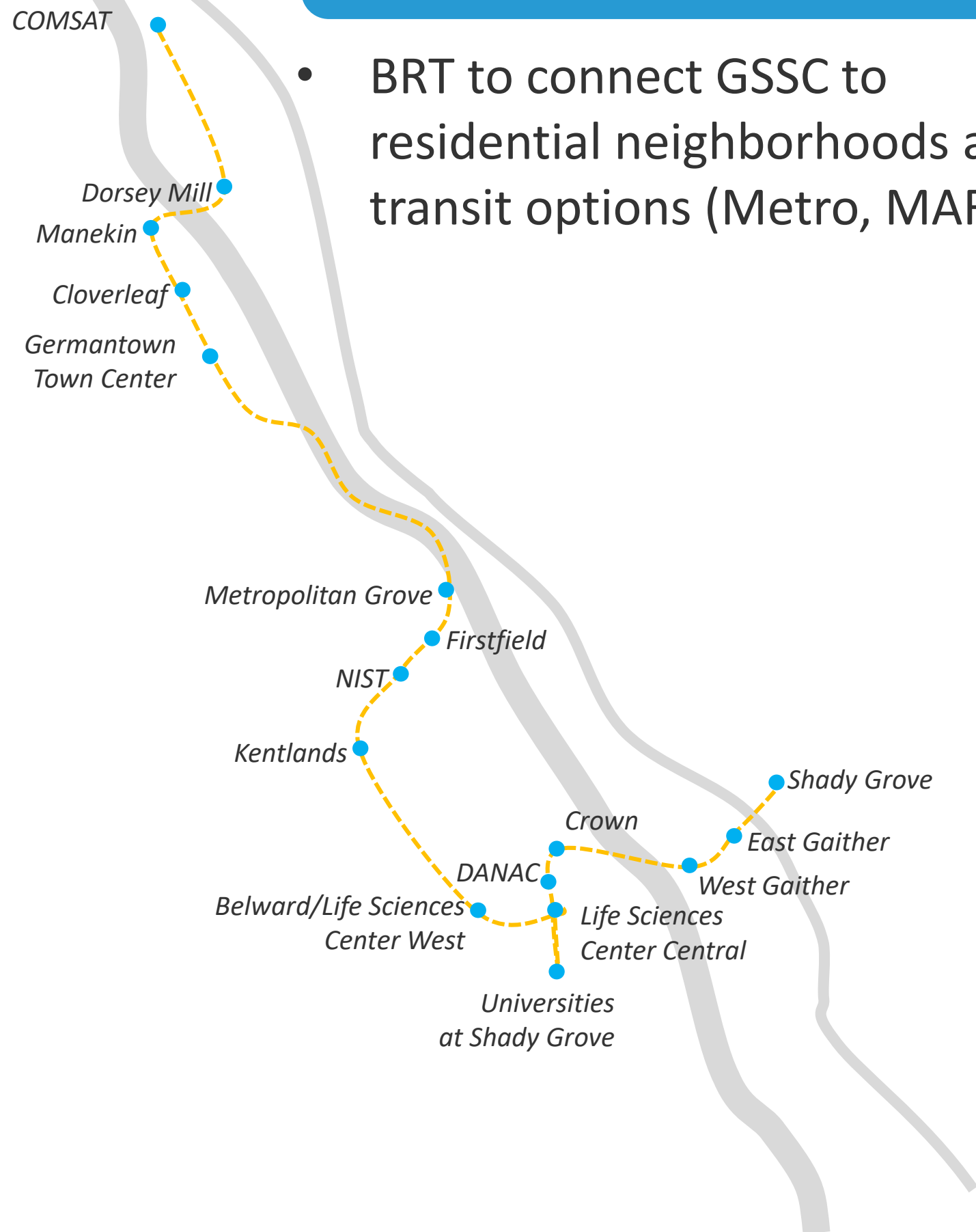


- **Monorail or Light Rail** from Shady Grove to Frederick
- **Corridor Cities Transitway** with current alignment
- **MARC** station and service upgrades along the Brunswick Line
- **I-270 BRT** from Frederick to Northern Virginia + **Corridor Cities Transitway** new concept
- **Red Line Extension** to Germantown
- **Purple Line Extension** to Tysons



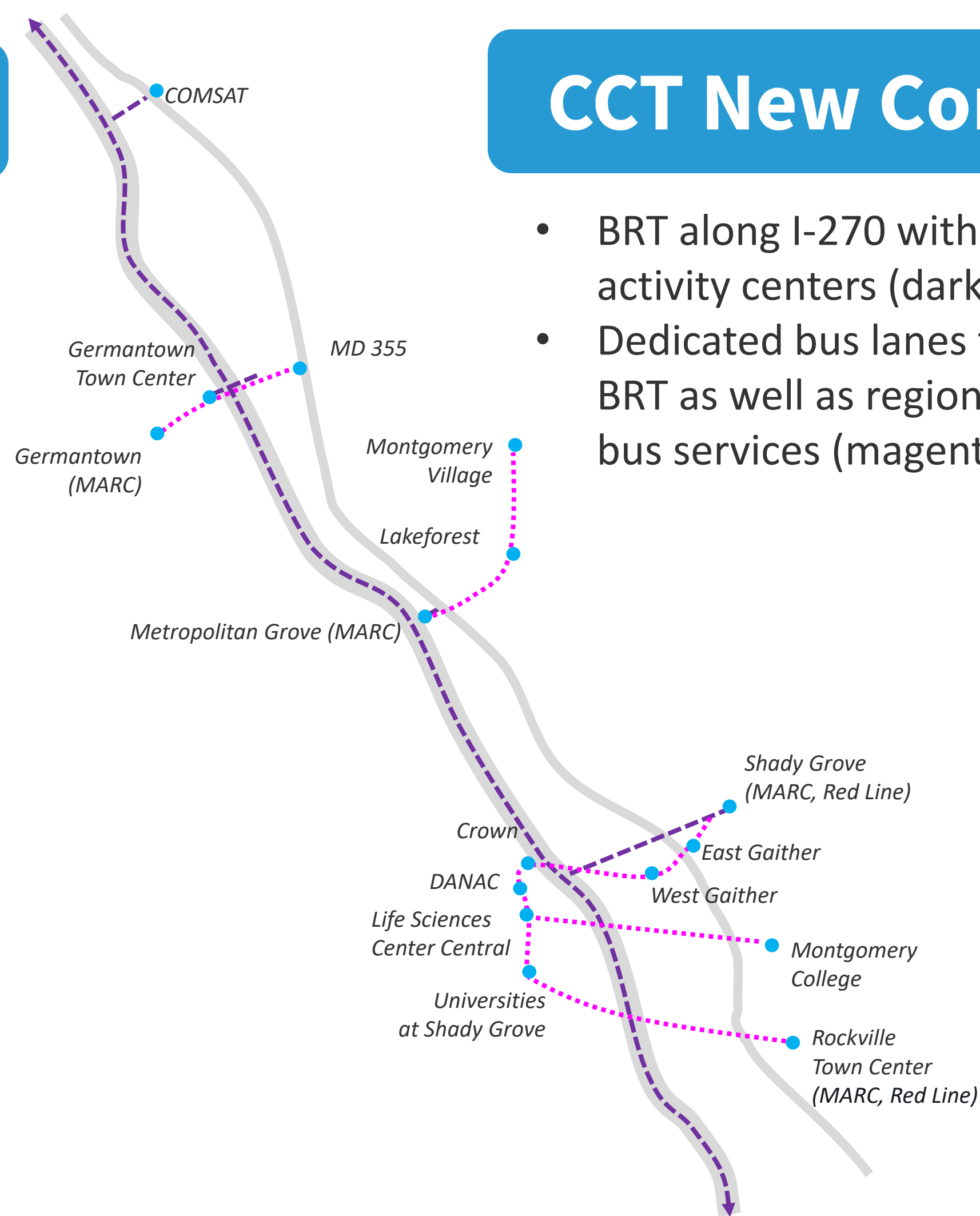
# CCT as Planned

- BRT to connect GSSC to residential neighborhoods and transit options (Metro, MARC)



# CCT New Concept

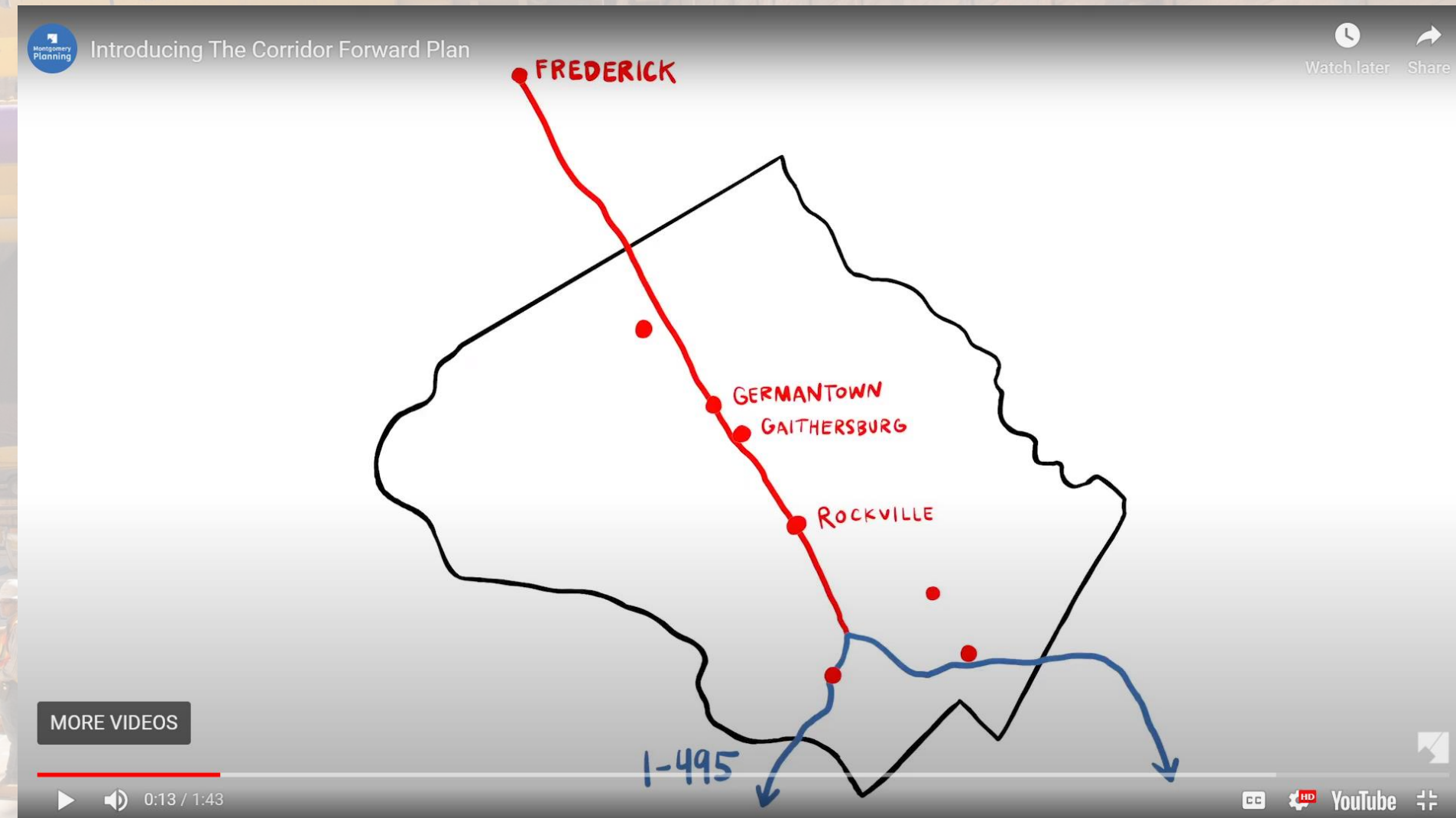
- BRT along I-270 with diversions to activity centers (dark purple)
- Dedicated bus lanes to be used by BRT as well as regional and local bus services (magenta)





# Get Involved!

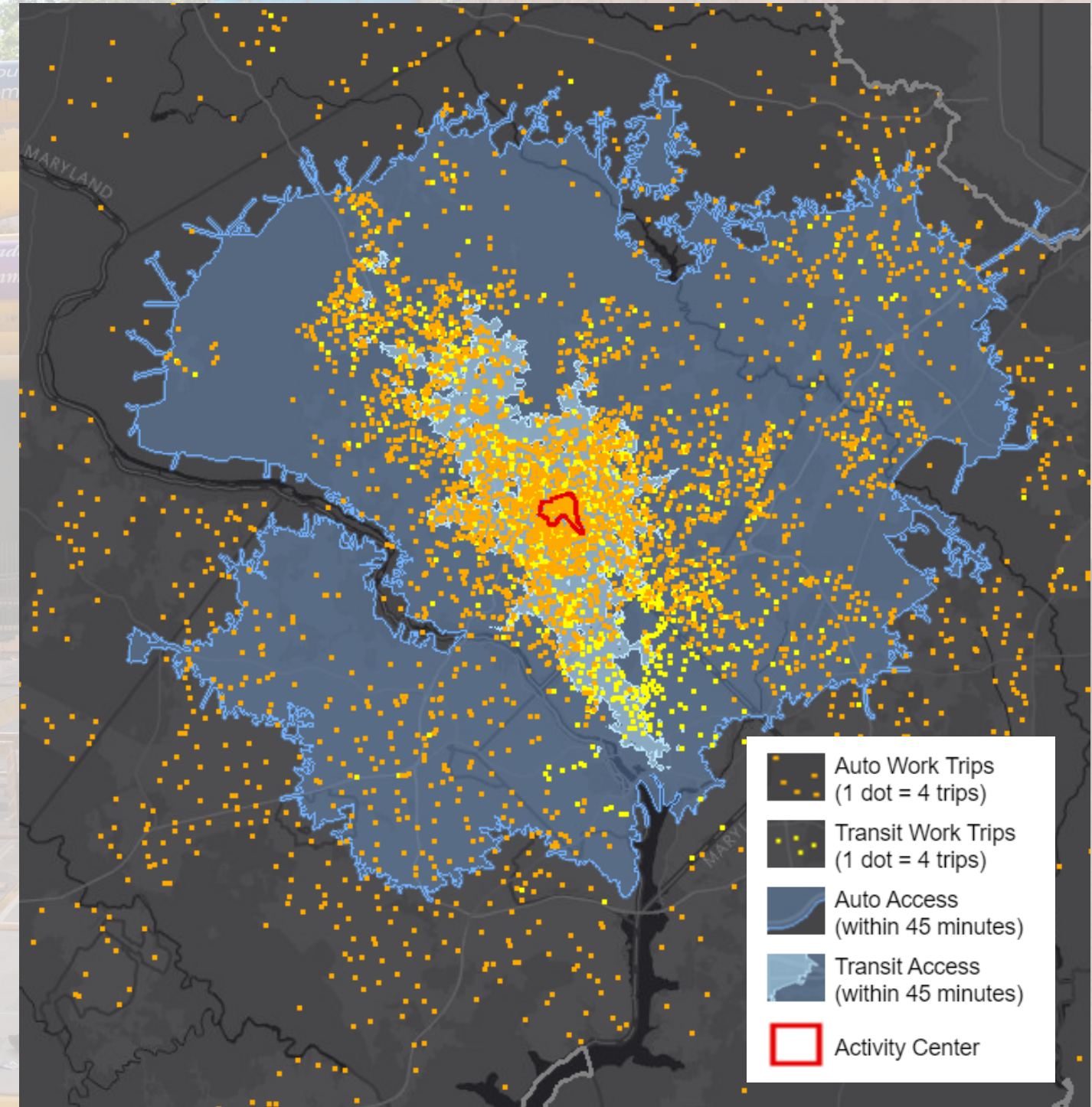
- **Educational Videos**
- **Interactive Web Map**
- **Transit Values Questionnaire**
- **Subscribe to E-letter**





# Get Involved!

- Educational Videos
- **Interactive Web Map**
- Transit Values Questionnaire
- Subscribe to E-letter

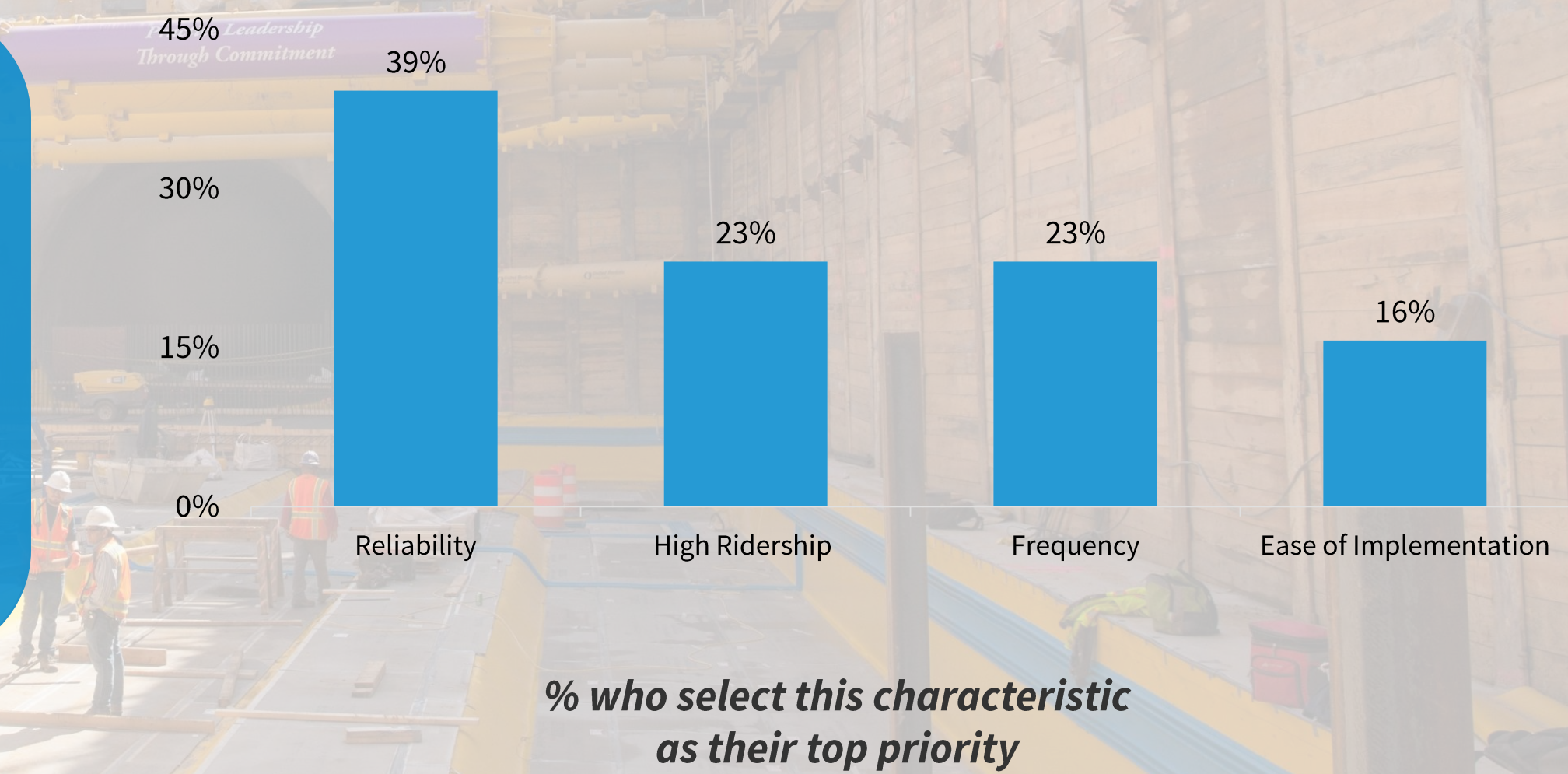




# Get Involved!

- Educational Videos
- Interactive Web Map
- **Transit Values Questionnaire**
- Subscribe to E-letter

## Transit Characteristics





# Get Involved!

- Educational Videos
- Interactive Web Map
- Transit Values Questionnaire
- **Subscribe to E-letter**



Sign up for the Corridor Forward: The I-270 Transit Plan eletter

Stay up-to-date with news and events about Corridor Forward: The I-270 Transit Plan.

\* Email

First Name

Last Name

Sign Up





**Thank You!**

## **Project Contacts**

### **Patrick Reed**

Transportation Planner Coordinator, Mid-County Planning  
[patrick.reed@montgomeryplanning.org](mailto:patrick.reed@montgomeryplanning.org)

### **Jesse Cohn**

Transportation Planner Coordinator, Countywide Planning & Policy  
[jesse.cohn@montgomeryplanning.org](mailto:jesse.cohn@montgomeryplanning.org)

