



Montgomery Planning

11/12/2020

Montgomery County Design

2019/2020 - Recent Design Awards



2019 Montgomery County Design Excellence Awards Winners

- **Glenstone – Design Excellence Award**



**Thomas Phifer + Partners
Architects**

2019 Montgomery County Design Excellence Awards Winners

- **The Pearl** – Design Excellence Award in Housing

**Design Collective
Architects**



2019 Montgomery County Design Excellence Citation

- **Unisphere at United Therapeutics – Design Excellence Citation**

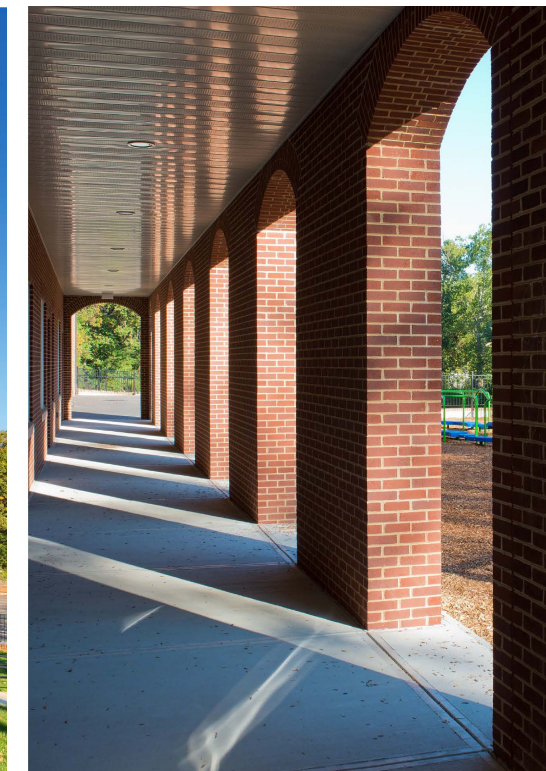
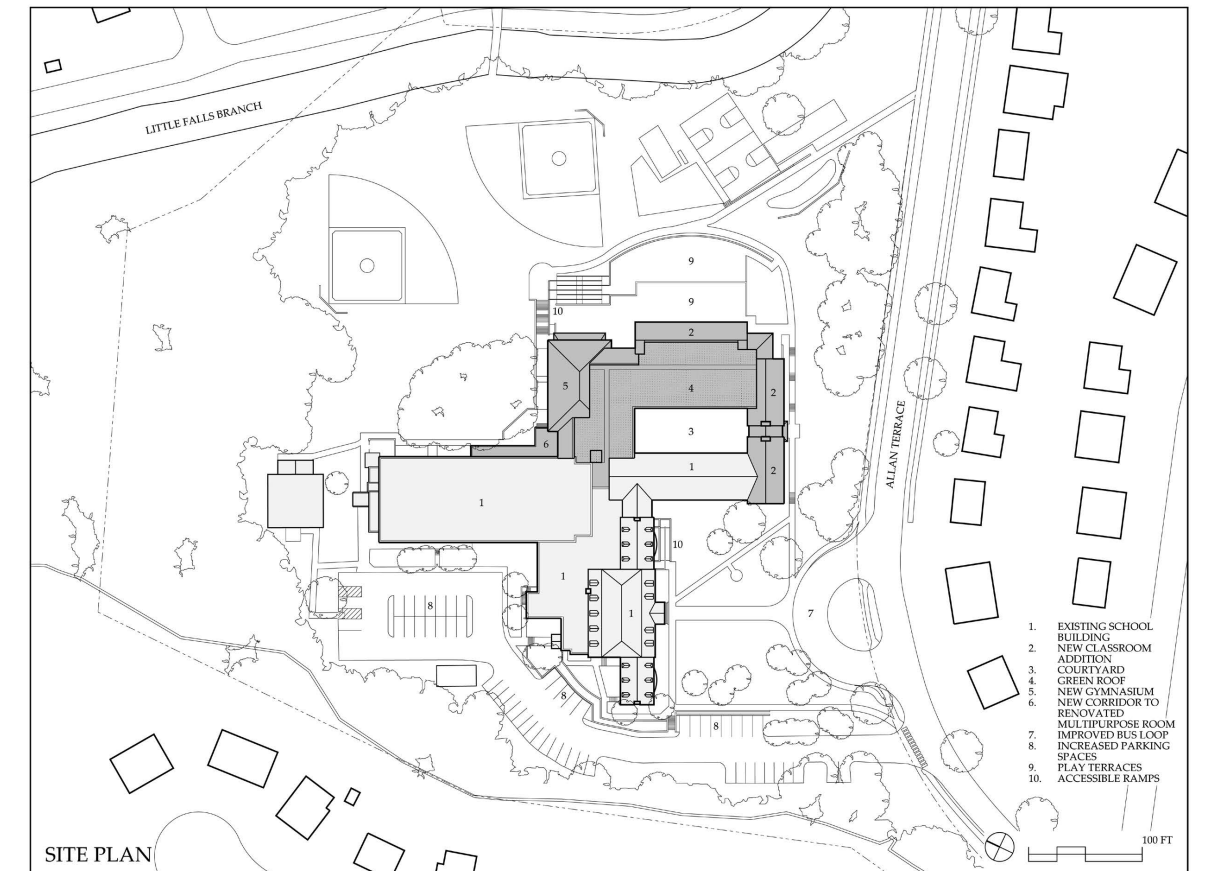


EwingColeArchitects

2019 Montgomery County Design Excellence Citation

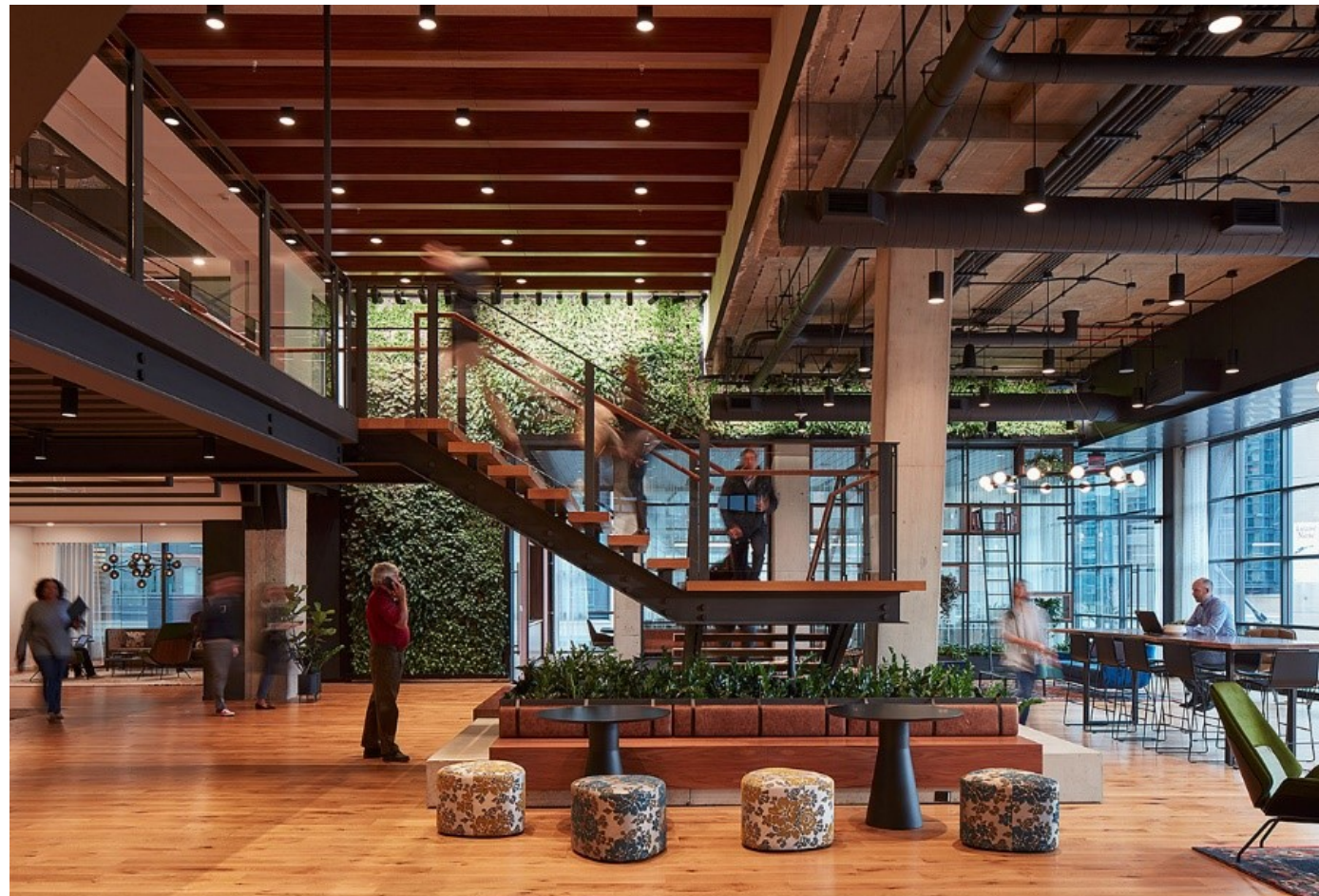
- **Westbrook School – Design Excellence Citation**

MUSE Architects



Multiple Awards: 4747 Bethesda Avenue – Bethesda, MD

- **ULI DC**
 - Excellence in Office Development
- **NAIOP DC|MD**
 - Best Suburban Office
 - Best Interiors
 - Best Interiors over 75,000sf
- **AIA Potomac Valley**
 - 2020 Gold Award – Non-Residential



Shalom Baranes Architects

Multiple Awards: Unisphere – United Therapeutics

- **ULI DC**
 - ULI Excellence in Sustainability
- **MoCo 2019 Design Excellence**
 - Citation



EwingColeArchitects



Multiple Awards: Medical Pavilion at White Oak Entry

- **NAIOP DC|MD – ULI Excellence in Office Development**
 - Best Suburban Office
 - Best Real Estate Transaction



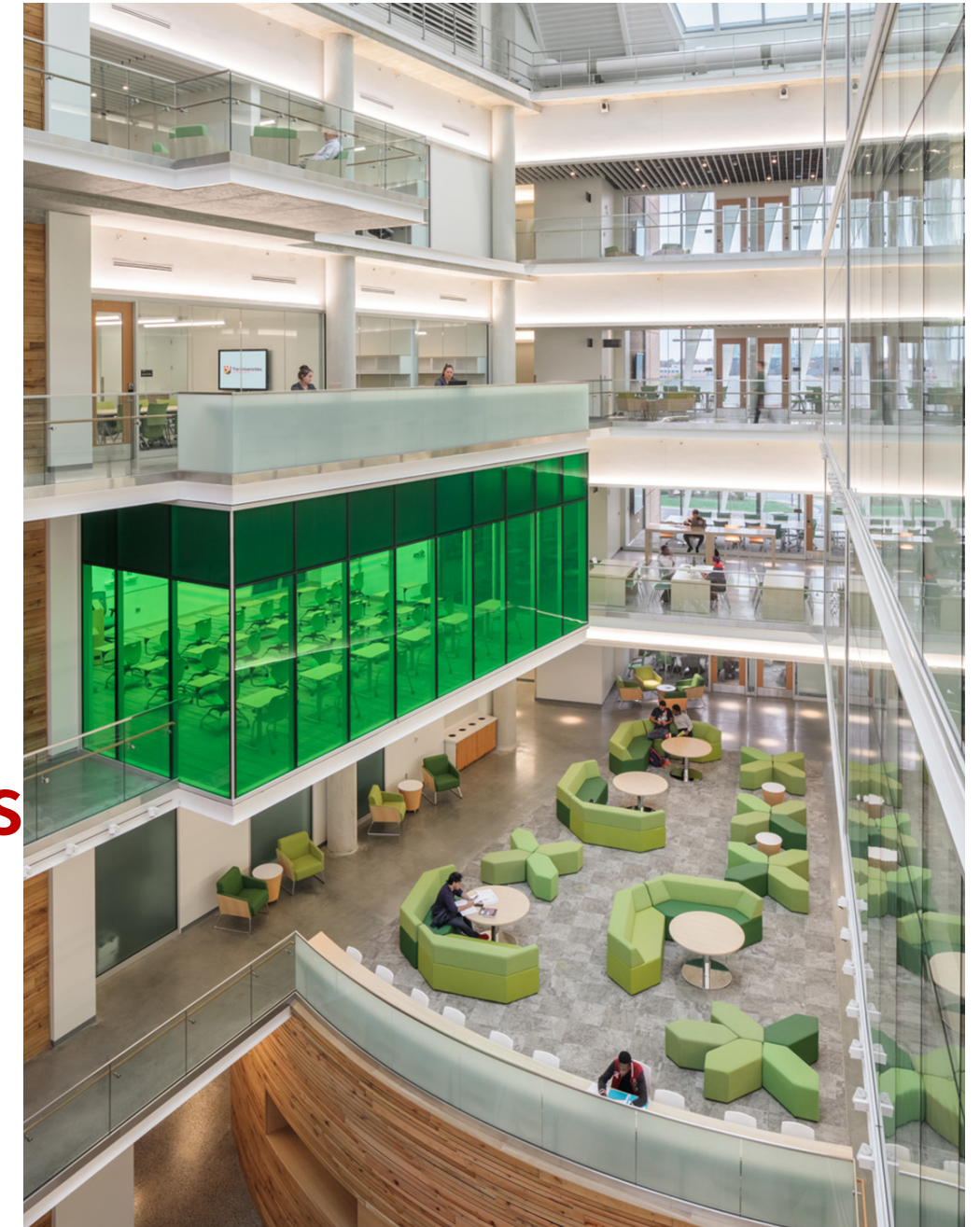
**Callison/RTKL
Architects**

Universities at Shady Grove Biomedical Sciences & Engineering Building

- **NAIOP DC|MD – ULI Excellence in Institutional Development**
 - Best Institutional Facility

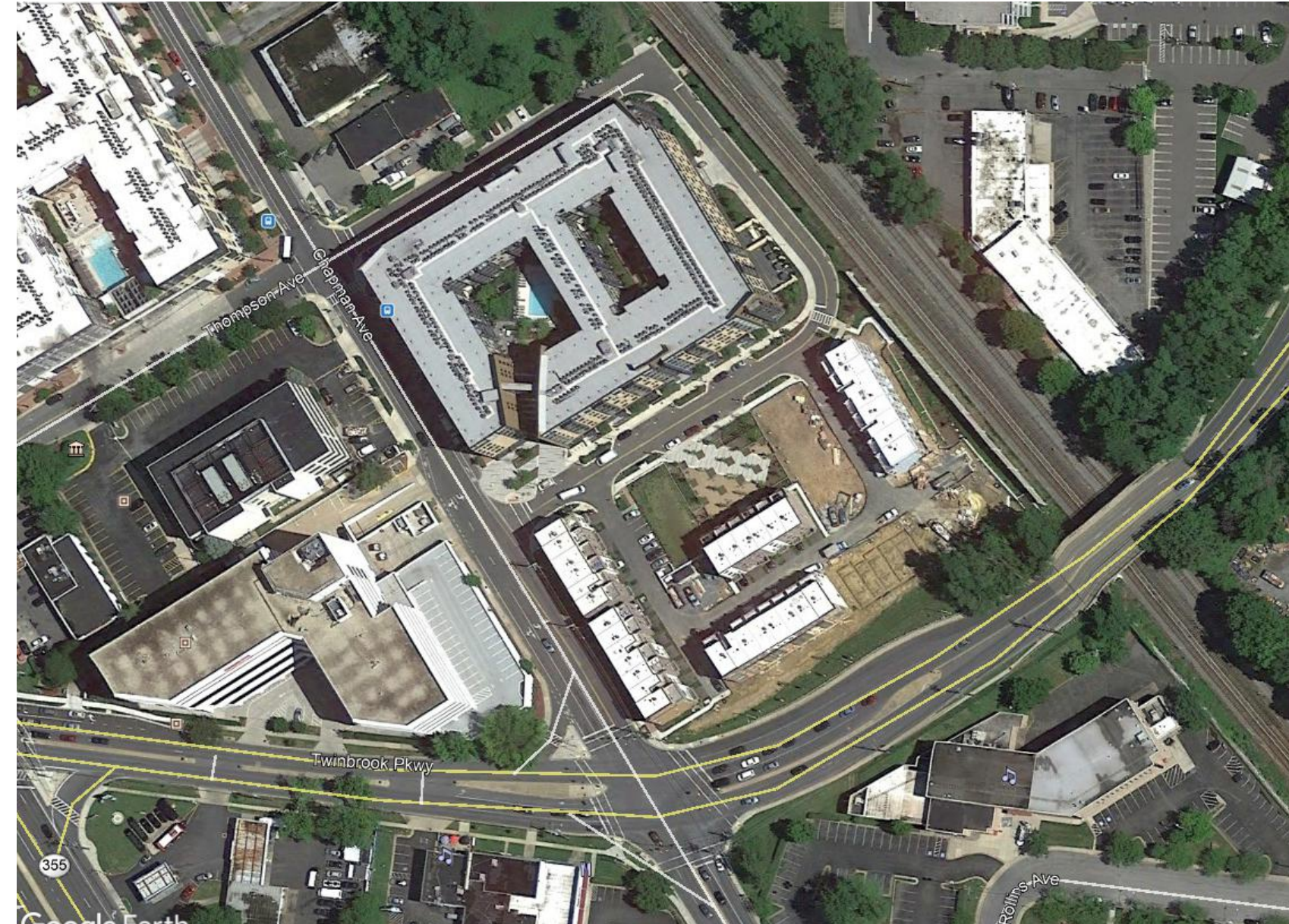


**Cooper Carry Architects
Lake|Flato Architects**



Escher Multi-Family in Twinbrook

- **NAIOP DC|MD – ULI Excellence in Multi-Family**
 - Best Multi-Family Project in Maryland



SK+I Architects

Woodlawn Museum at Woodlawn Manor Cultural Park

- **AIA Potomac Valley – 2020 Merit Award**
 - Institutional Architecture
- **MoCo 2017 Design Excellence**
 - Citation

Miche Booz Architects



Wheaton Library and Community Recreation Center

- **AIA Maryland– 2020 Honor Award**
 - Institutional Architecture

Grimm + Parker Architects



The George Multi-Family Building - Wheaton

- **AIA Potomac Valley – 2020 Merit Award**
 - Multi-Family Architecture

Bonstra|Hersign Architects



AIA | POTOMAC VALLEY DESIGN AWARDS 2020
MULTIFAMILY CATEGORY

THE GEORGE WHEATON, MD

A five-story, mid-1960s office building located at a critical intersection in Wheaton, Maryland had reached the end of its useful life. Its outdated, inefficient systems were failing, and cores were not code compliant or configured for the change of use. Set in a rapidly redeveloping and transit-oriented district, the existing building was ideal for adaption to residential use.

The 60' width of the existing structure perfectly adapted to a double-loaded corridor feeding into efficiently planned apartments with tall ceilings, and light-filled by large windows. The concrete structural frame and footings, designed for office use, provide nearly two and a half times the required live loads for today's multifamily residential buildings. Following structural analysis, an additional seven floors were added with nominal reinforcement, allowing for the repurposing of the low-profile existing structure into a sleek 12-story 194-unit apartment tower that enhances the public realm.



TOP The existing 5-story, 1960s office building
LEFT Newly transformed tower, facing southeast across Georgia Avenue

THE GEORGE



The Lindley – Chevy Chase Lake

- **AIA Maryland – 2020 Merit Award**
 - Residential Architecture

Design Collective Architects



The McLean School - Potomac

- **AIA Maryland – 2020 Jury Citation Award**
 - Institutional Building



Quinn Evans Architects



The Writers Center - Bethesda

- **AIA Potomac Valley – 2020 Merit Award**
 - Institutional Architecture
- **AIA Maryland – 2020 Jury Citation Award**
 - Institutional Architecture

McInturff Architects

