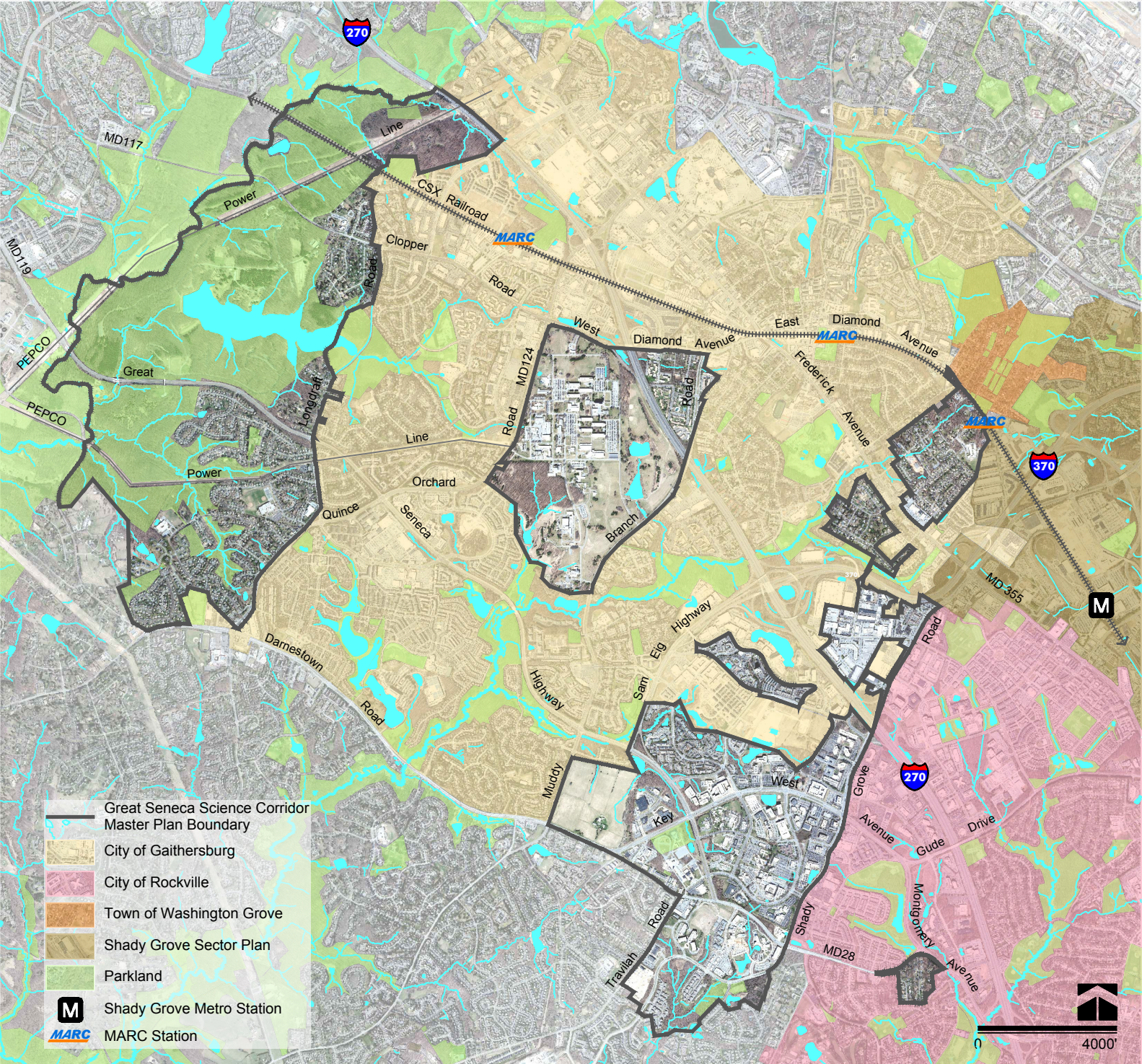


Great Seneca Science Corridor Master Plan



This map shows the boundaries of the 2010 Greater Seneca Science Corridor Master Plan, which are also the proposed boundaries for the Minor Master Plan Amendment to the 2010 Plan. The Plan area covers 4,360 acres in the heart of the I-270 Corridor. It includes the Life Sciences Center, the western Quince Orchard neighborhoods and enclave areas such as the National Institute of Standards and Technology (NIST) and Rosemont, which are completely or nearly completely surrounded by a municipality. The City of Gaithersburg occupies 10 square miles in the center of the Plan area. The City of Rockville borders the Plan area on the east and the Town of Washington Grove is located to the northeast.