

COMMUNITY CHAT

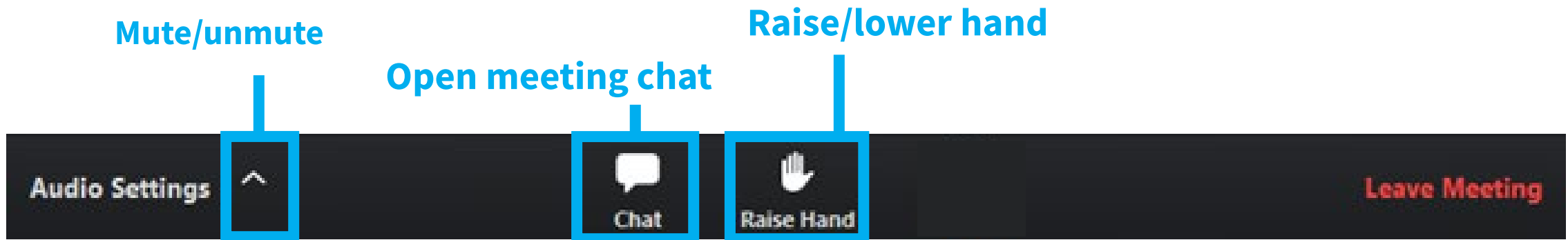
Connectedness



hosted by Kendra Hyson, Susanne Paul, and members of the THRIVE 2050 Equity Working Group

How to Participate - Zoom

- This meeting will be recorded and shared on the website
- Please mute yourself, until called on
- If you have a comment or question, raise your hand or type it in the chat
- Unmute yourself, if you are called on



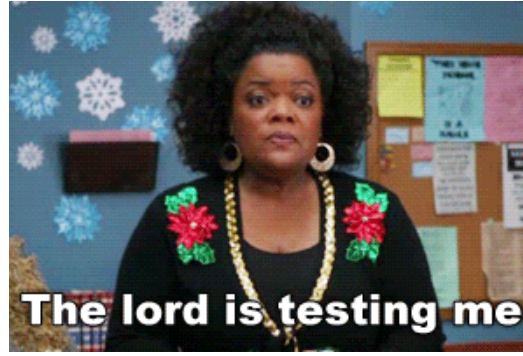
Before we start... how is everyone today?



A: Doing ok!



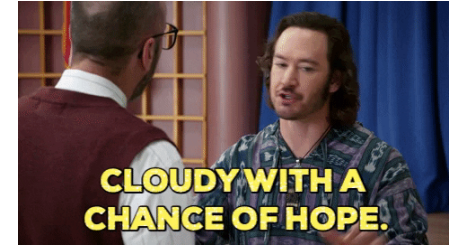
B: Fired up



C: Stressed



D: Very tired



E: Hopeful

Goals of this conversation today: Check in with you

- Discuss the overall idea of Connectedness in the General Plan
- Discuss the Goals and key ideas of the Connectedness chapter
- Get feedback from you!

Connectedness

What do we mean when we say Connectedness?

Access

Trust

Equity

Belonging



Image from Project for Public Spaces: <https://www.pps.org/services>

What is Thrive Montgomery 2050?

- Update to the General Plan, last comprehensively updated in 1969.
- Long-range vision for the future of growth in the county.
- Thrive Montgomery 2050 plan will help guide:
 - Countywide policies
 - Future initiatives
 - Land use planning infrastructure
 - Community amenities
 - Private development



Vision

In 2050, Montgomery County is a web of **complete communities** connected by **vibrant corridors**.



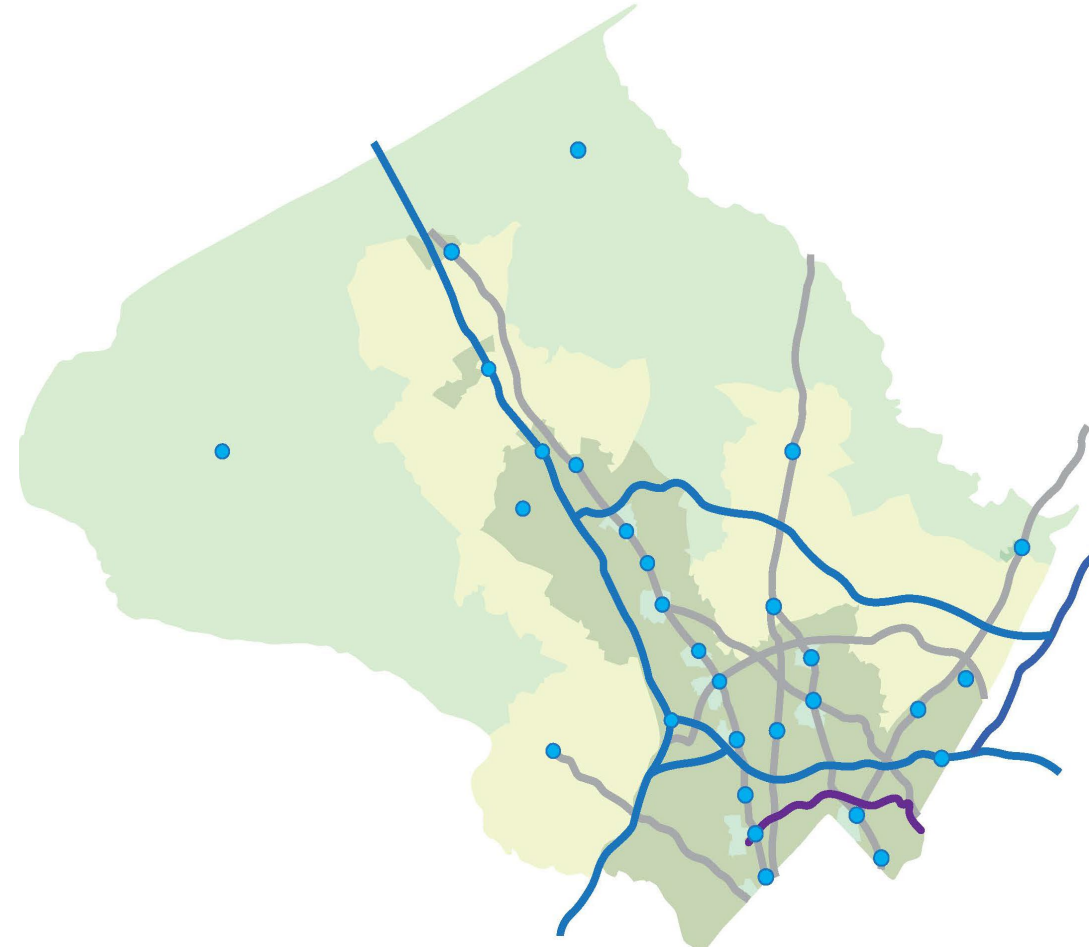
ENVIRONMENTAL
RESILIENCE



ECONOMIC
HEALTH



COMMUNITY
EQUITY



Categories of Goals



Project Timeline

**We are
here** →



Issues Report

Presented to the Planning Board on February 27th



Draft Vision and Goals

Presented to the Planning Board on April 16th



Draft Policies and Actions

Presented to the Planning Board on June 11th



Working Draft Plan

September 2020



Planning Board Review + Transmittal

October 2020 – March 2021

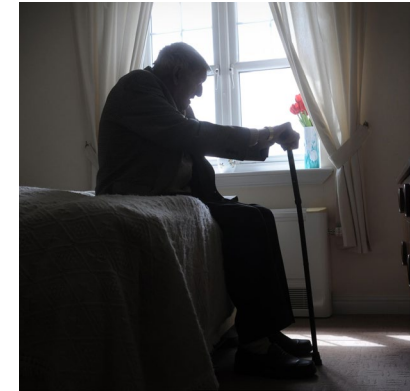


Council Review + Approval

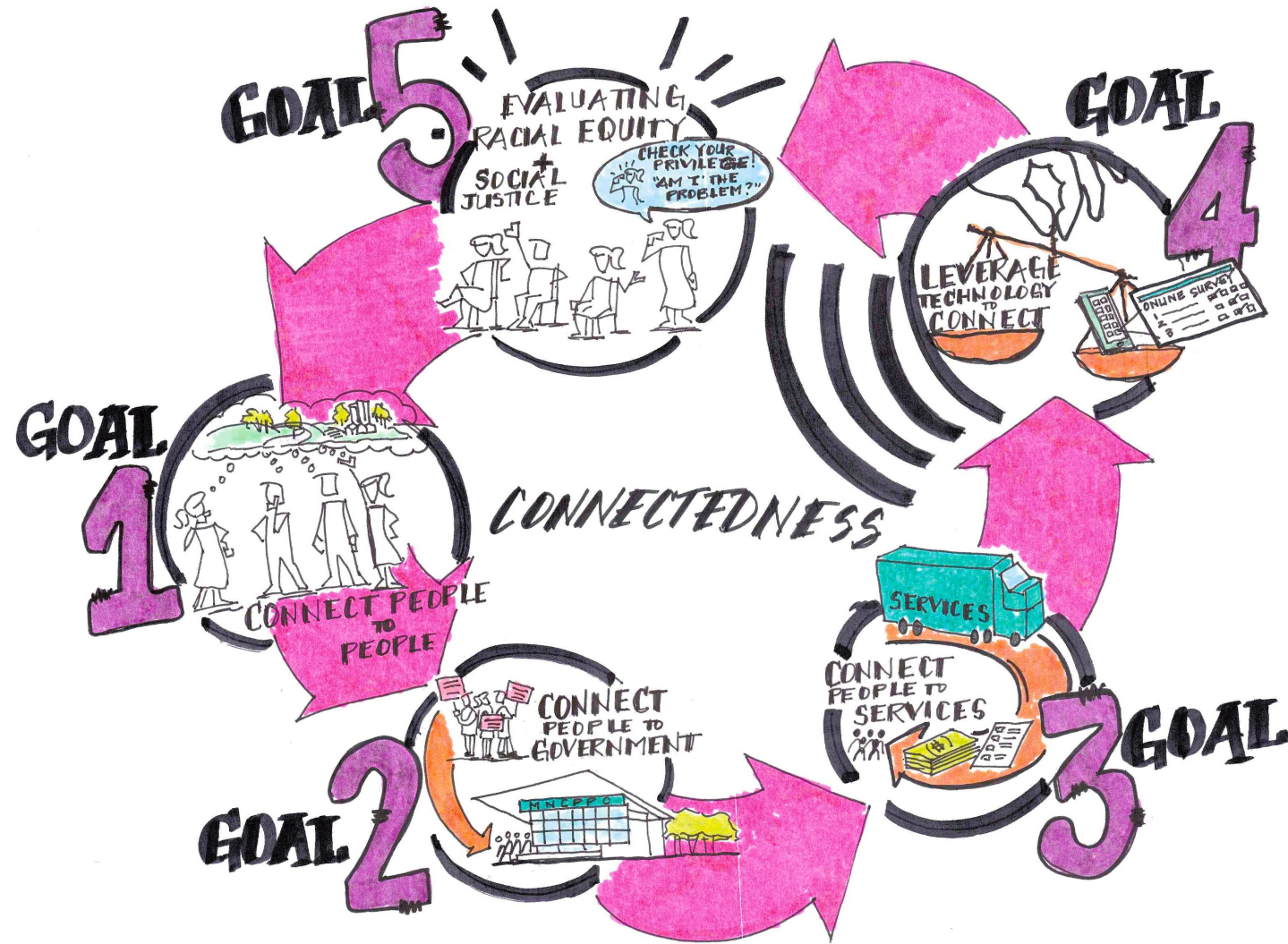
April 2021 - TBD

Connectedness

We have a Connectedness problem.



What are the Goals of Connectedness?



Goal: Connecting people to people

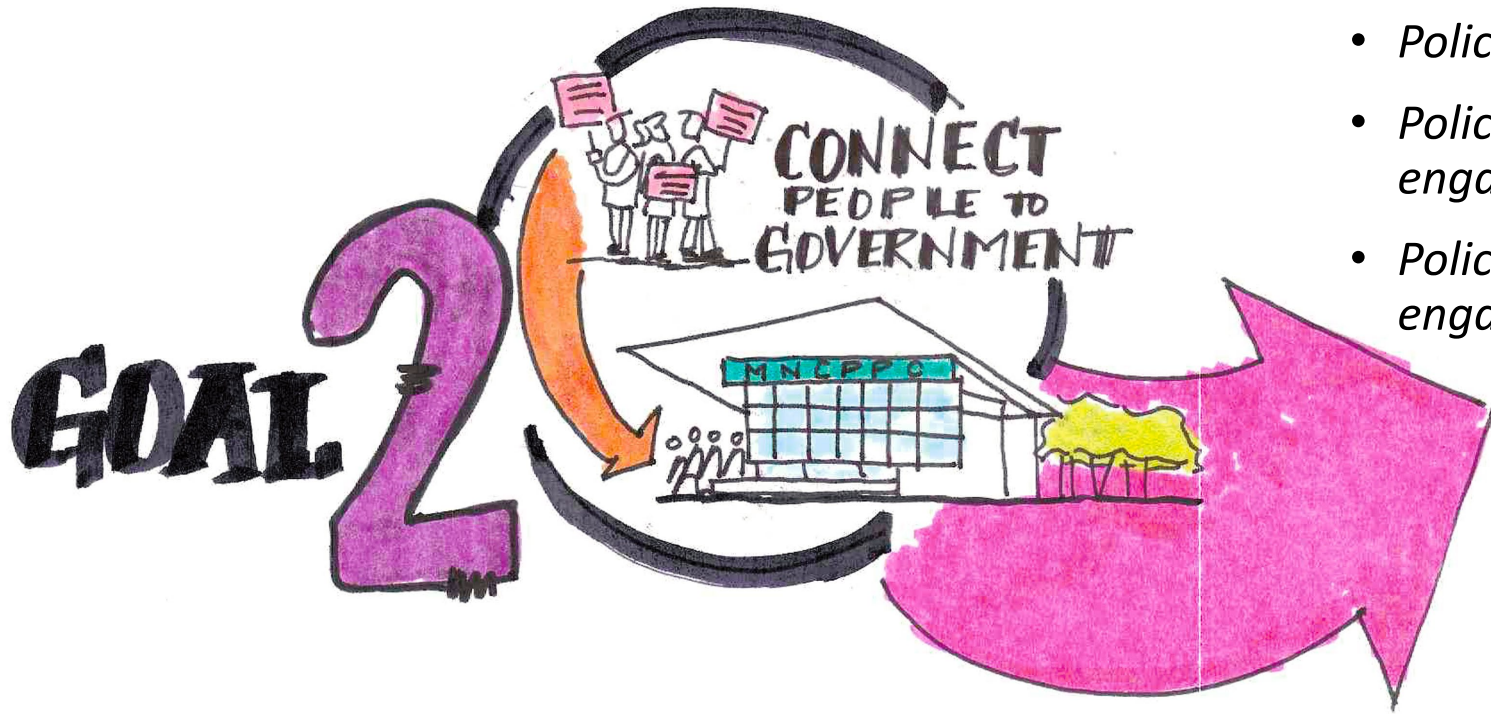


Goal 1: Policies

- *Policy 1.1: Use public space to connect people*
- *Policy 1.2: Use parks to connect people*
- *Policy 1.3: Design spaces for social gathering*

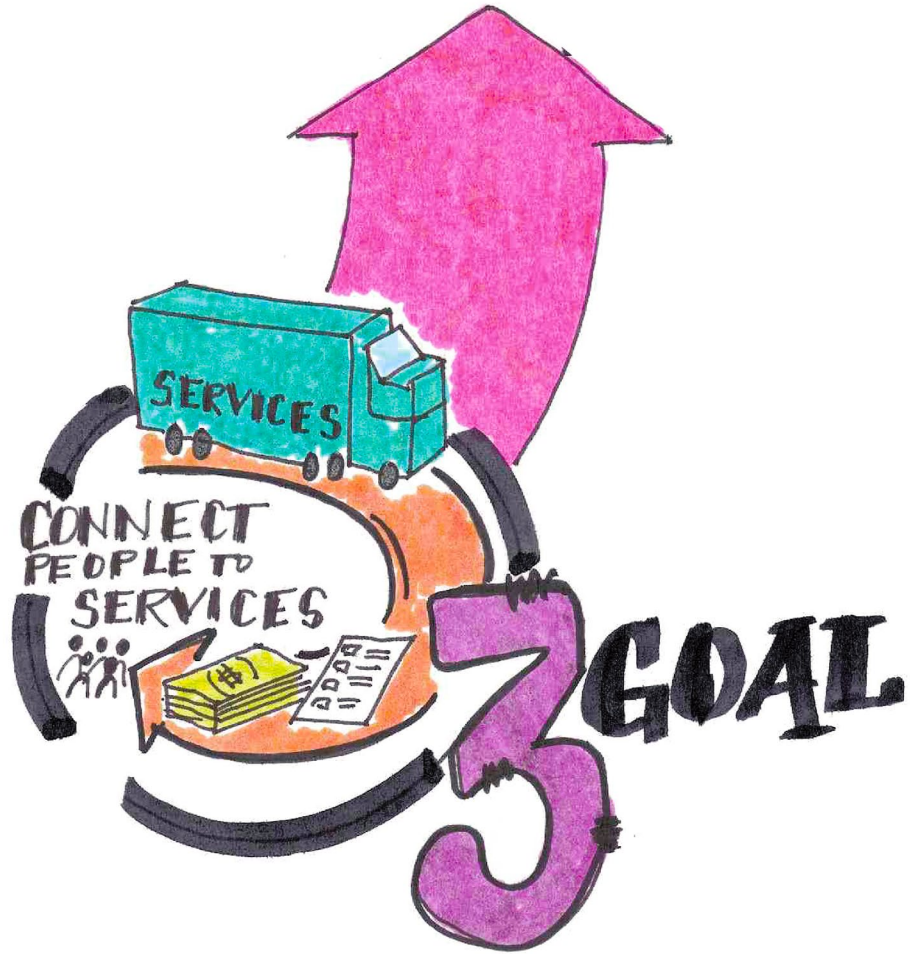
Goal: Connecting people to government

Goal 2: Policies



- *Policy 2.1: Foster trust with community leaders*
- *Policy 2.2: Remove barriers to community engagement*
- *Policy 2.2: Remove barriers to community engagement*

Goal: Connecting people to services



Goal 3: Policy

- *Policy 3.1: Distribute services throughout the county*

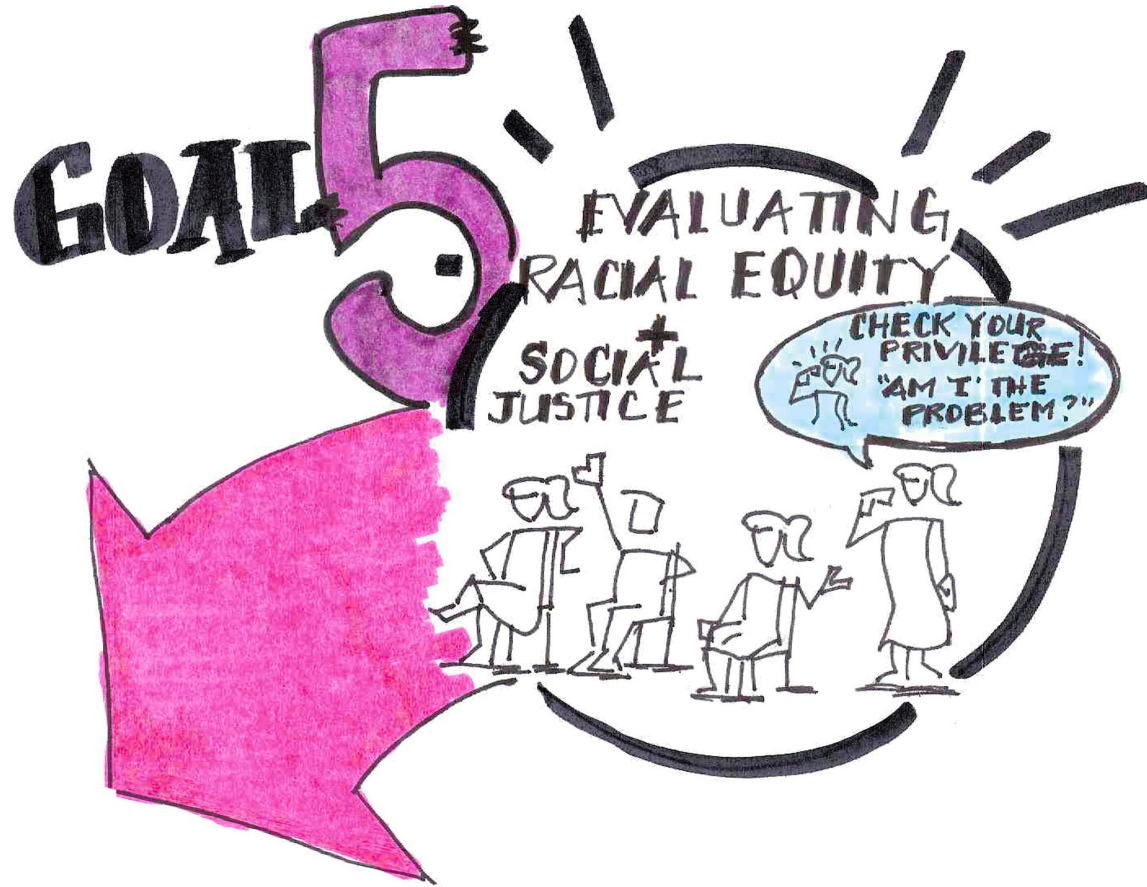
Goal: Leveraging Technology to Connect



Goal 4: Policies

- *Policy 4.1: Connect areas with limited access*
- *Policy 4.2: Serve typically disconnected groups*
- *Policy 4.3: Equitably implement emerging technology*

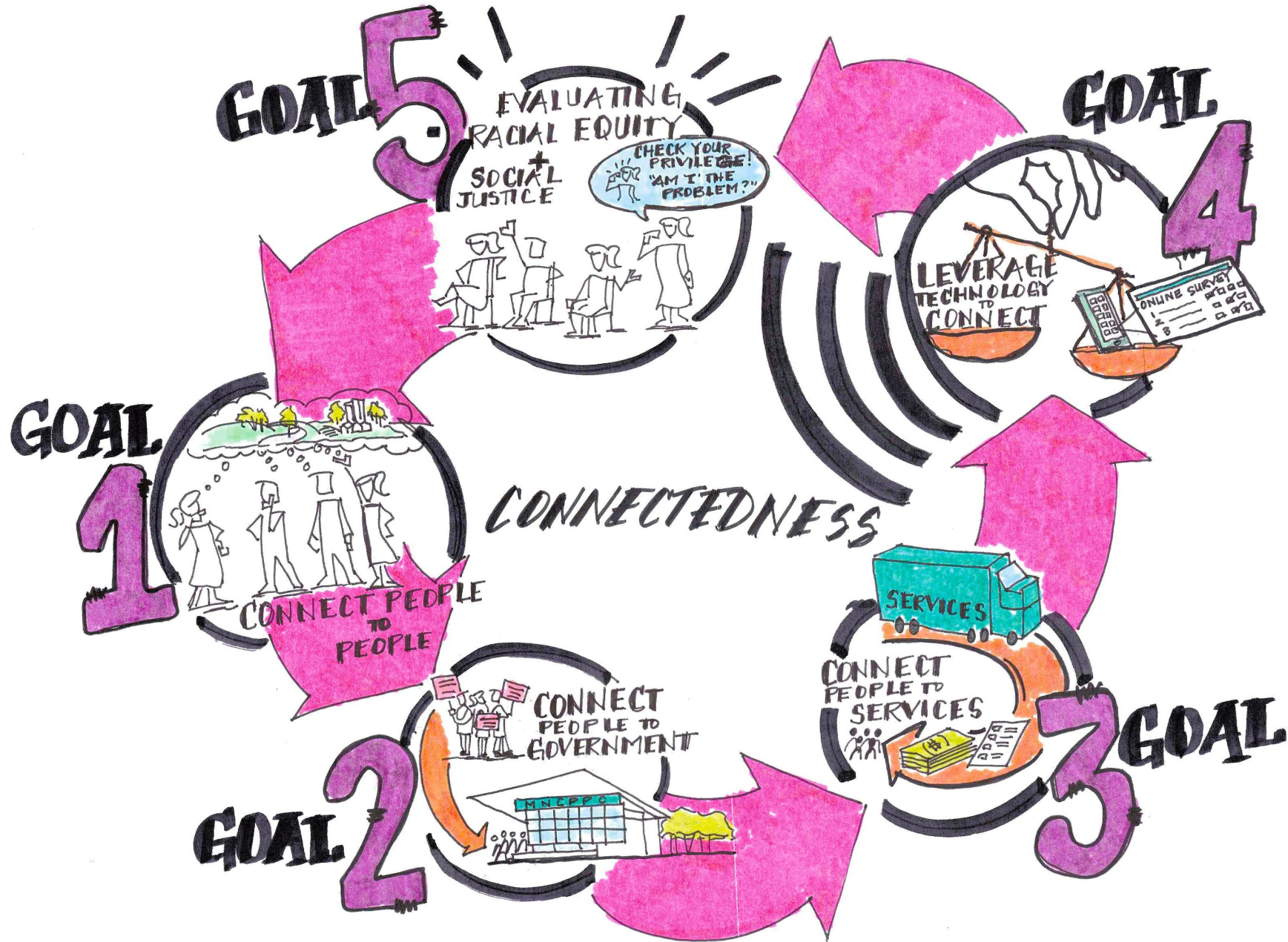
Goal: Evaluate Equity, Racial and Social Justice



Goal 5: Policy

- *Policy 5.1: Assess policies, programs, and plans*

Pause for Questions...?



Discussion Questions

- How much do you think public spaces, parks, and trails play a role in connecting people in our county?
- What are public spaces to you in Montgomery County?
- Do you think there are enough social and recreation spaces around your community? Would you consider the existing ones to be safe and accessible for all?
- Have you experienced barriers when trying to participate in decision-making processes involving the planning and development of your community?
- Do you think there are enough small local neighborhood-based services buildings distributed throughout the County?
- Do you have access to reliable and affordable technology in your community?
- Have you experienced discrimination when using any of the County's parks or facilities?

Stay involved!



Participate in upcoming Community Chats – through June 30th



Watch the archived June 11th Planning Board Meeting on the Draft Policies and Actions (add link)



Send your comments to Thrive2050@montgomeryplanning.org



Sign-up for the Thrive Montgomery 2050 e-letter at www.ThriveMontgomery.com



Connect with us on [Twitter](#), [Facebook](#), and [Instagram](#)

Community Chat Schedule

June 17, 7 to 8 p.m. **Healthy Communities**

June 22, 7 to 8 p.m. **Safe and Efficient Travel**

June 23, Noon to 1 p.m. **Complete Communities**

June 23, 6:30 to 7:30 p.m. **Bilingual Healthy and Sustainable Environment**

June 24, All day. Twitter Town Hall. **Housing**

June 24, 5 to 6 p.m. **Pints with a Planner on Housing with Casey Anderson**

June 29, Noon to 1 p.m. **Culture and Design**

June 30, 7 to 8 p.m. **Diverse and Adaptable Growth**

Thank you!

More questions?

Kendra Hyson

M-NCPPC Montgomery Planning

kendra.hyson@montgomeryplanning.org

Susanne Paul

M-NCPPC Montgomery Parks

susanne.paul@montgomeryparks.org