

Montgomery Parks Open Parkways

Darren Flusche

Trails Master Planner & Trails Program Supervisor

Darren.Flusche@montgomeryparks.org

Office: 301.495.2475

Open Parkway Update

- Introduction
- Locations & Duration
- Counts
- Lessons & Adaptations
 - Stencils
 - Gates

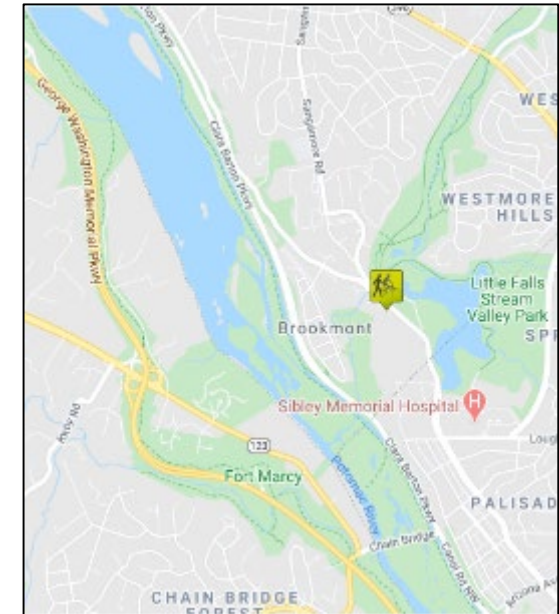
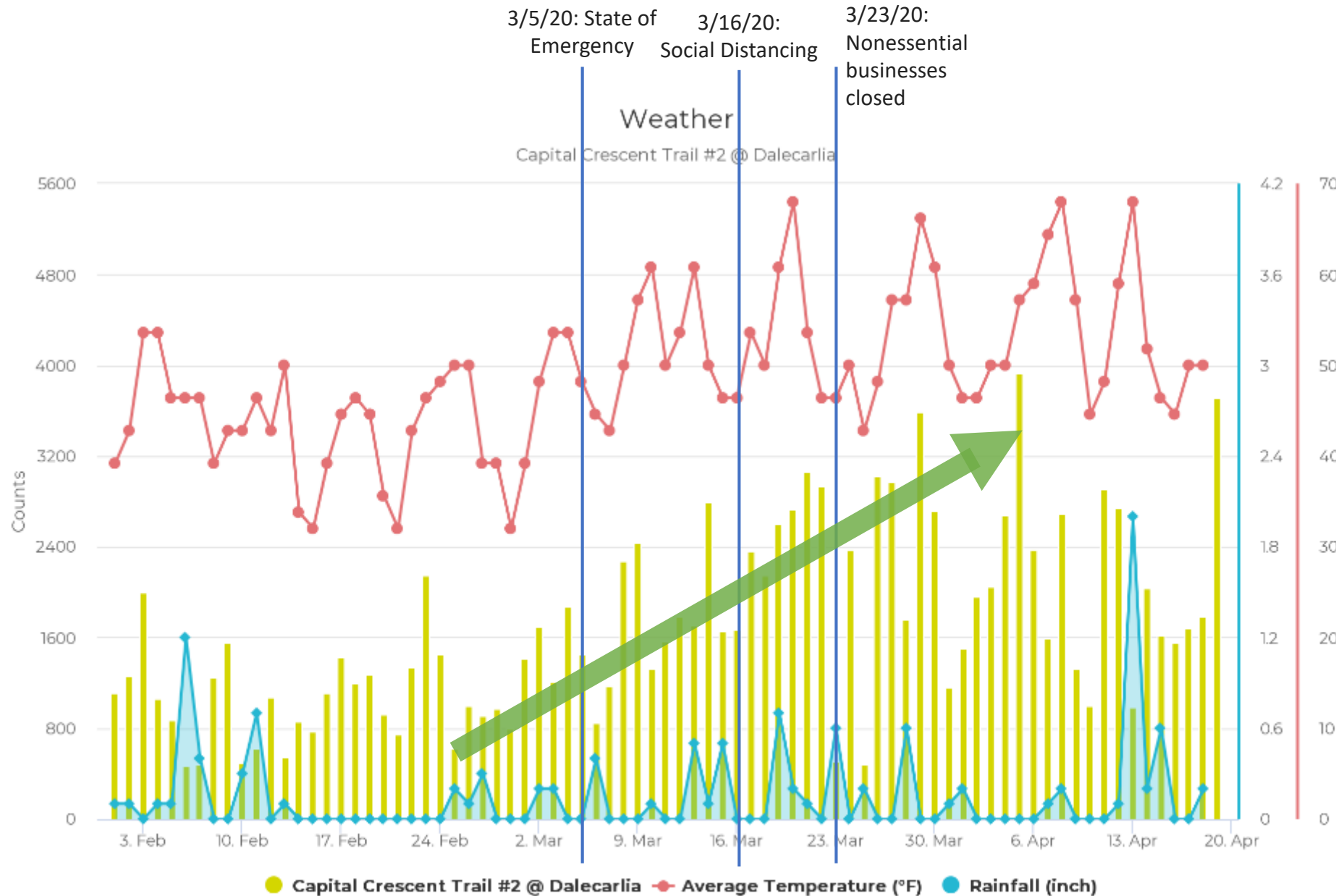




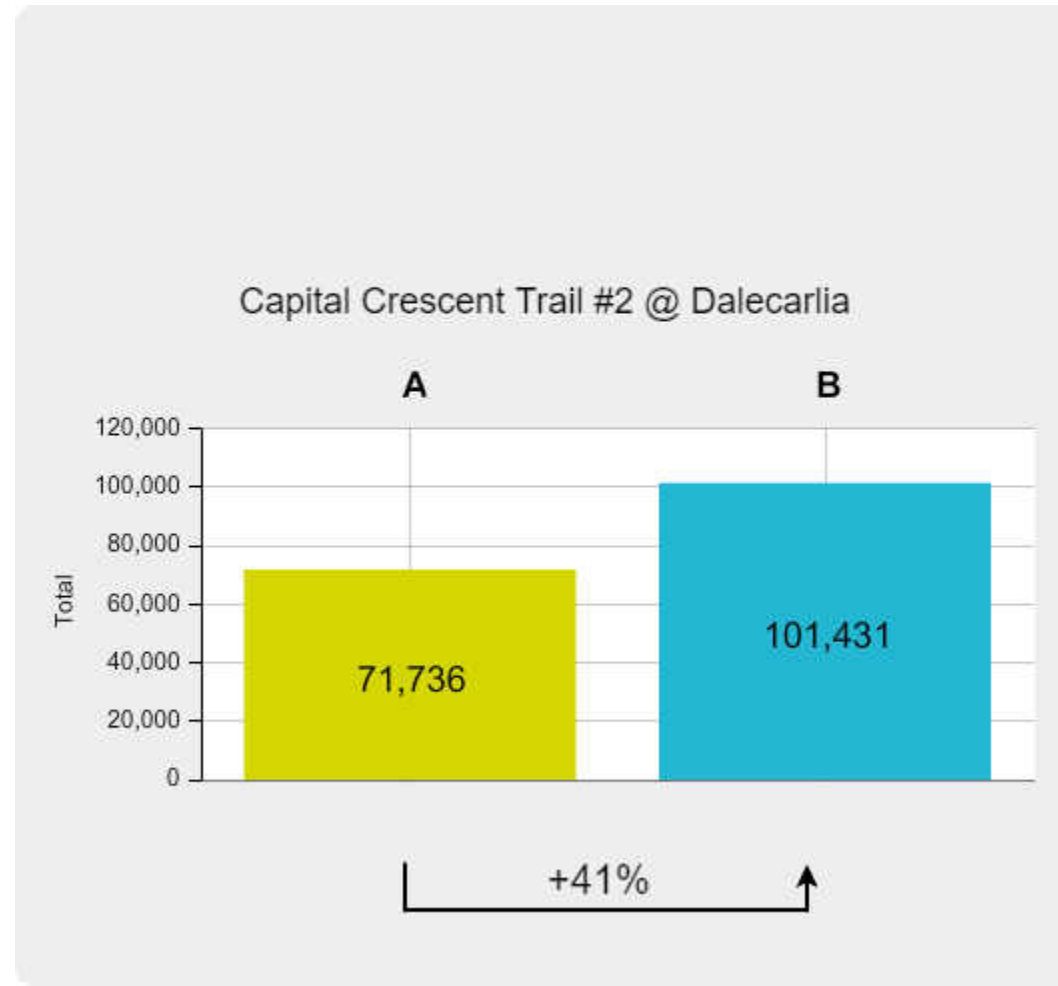
Little Falls Parkway

Introduction

Eco-Counter: Capital Crescent Trail #2 @ Dalecarlia



2019 compared to 2020



03/01/19 – 4/19/19

03/01/20 – 4/19/20

Capital Crescent Trail #2 @Dalecarlia Tunnel

Day	Daily Total	Peak Hour	Peak Hour Volume	Peak 15 min Volume	
Tuesday, 03/31/20	1,161	4pm	125	44 users (3:30pm)	
Wednesday, 4/01/20	1,506	6pm	255	84 users (6pm)	
Thursday, 4/02/20	1,965	5pm	229	71 users (5:45pm)	
Friday, 04/03/20	2,046	4pm	285	85 users 5:15pm	
Saturday, 04/04/20	2,681	2pm	316	92 users (3:15pm)	
Sunday, 04/05/20	3,934	3pm	529	158 users (330pm)	10 users/min
Monday, 04/06/20	2,380	6pm	307	88 users (6:30pm)	
Tuesday, 04/07/20	1,590	2pm	176	52 users (2:45pm)	
Wednesday, 04/08/20	2,690	5pm	369	104 users (6pm)	
Thursday, 04/09/20	1,325	5pm	149	56 users (5:30)	
Friday, 04/10/20	994	4pm	106	34 users (4:45)	
Saturday, 04/11/20	2,910	2pm	368	111 users (2:30)	
Sunday, 04/12/20	2,746	3pm	419	128 users (3:15)	8.5 users/min
Monday, 04/13/20	986	6pm	246	65 users (6:30)	
Tuesday, 04/14/20	2,038	4pm	243	76 users (5:45)	
Wednesday, 04/15/20	1,619	5pm	223	71 users (6:15)	

Purpose of Open Parkways

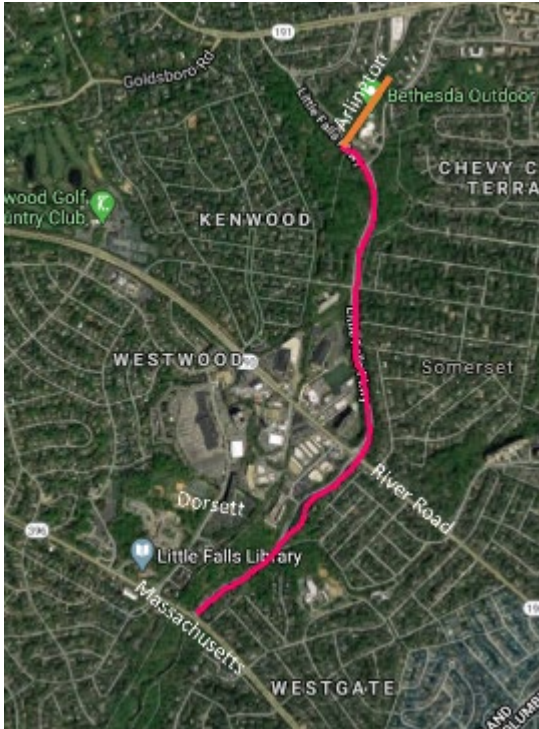


- Provide additional space for people to get outside and practice physical distancing during COVID-19
- Relieve pressure on our most used trails
 - Capital Crescent Trail
 - Sligo Creek Trail
 - Rock Creek Trail

Locations & Duration

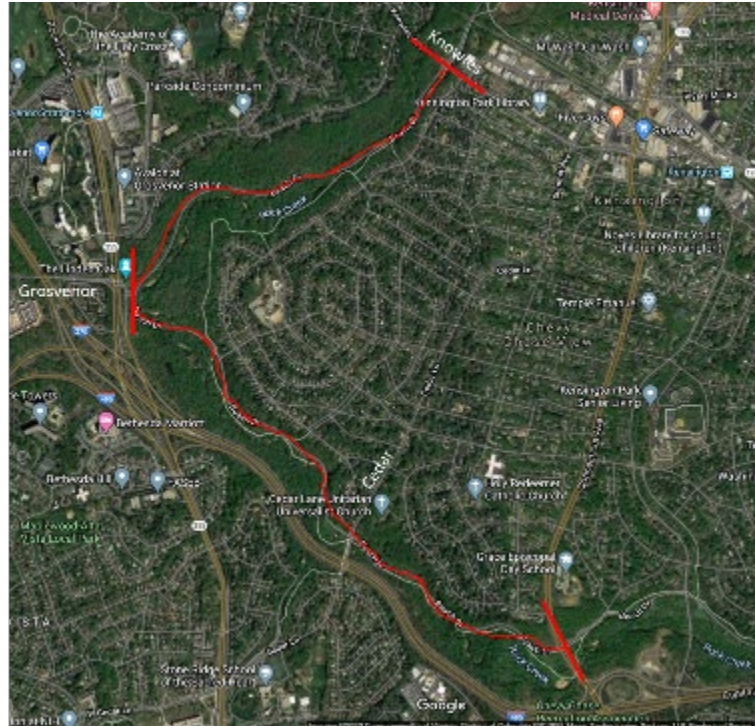
Little Falls Parkway

Massachusetts Ave. to
Arlington Rd. (1.3 miles)
Continues on Arlington Rd



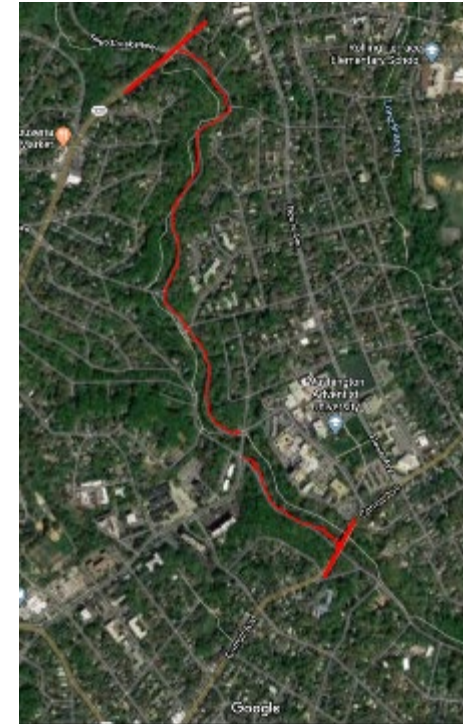
Beach Drive

Connecticut Avenue to
Knowles Avenue
(2.7 miles)

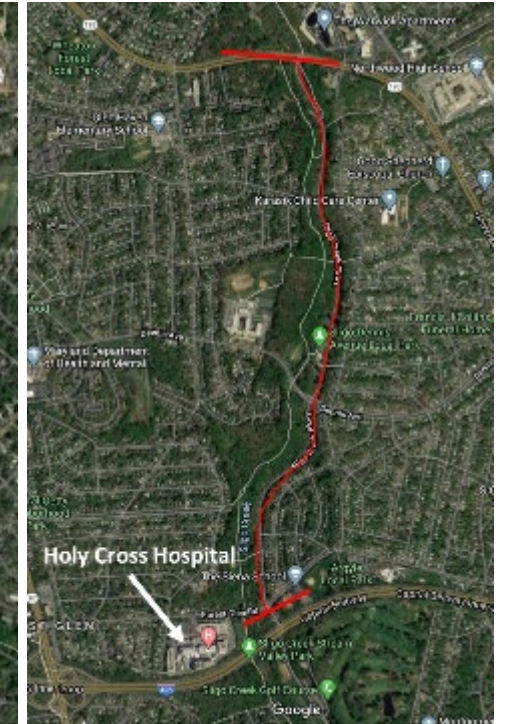


Sligo Creek Parkway

Old Carroll Avenue to Piney Branch Road
Forest Glen Road to University Boulevard
(2.6 miles)



Southern Section



Northern Section

Friday 9 a.m. through Sunday 6 p.m.

Was also open for pedestrians and bicyclists on Memorial Day.

Little Falls Parkway



Beach Drive and Rock Creek Trail



Sligo Creek Parkway and Trail



Team Effort

- Park & Planning Board
- Park Director & Deputy Directors
- Park Planning & Stewardship Division (PPSD)
- Southern Park Operations
- Park Police
- Park Development Division (PDD)
- Public Affairs & Community Partnerships (PACP)
- Facilities Management
- Exhibit Shop
- MCDOT – Arlington Road



Little Falls Parkway

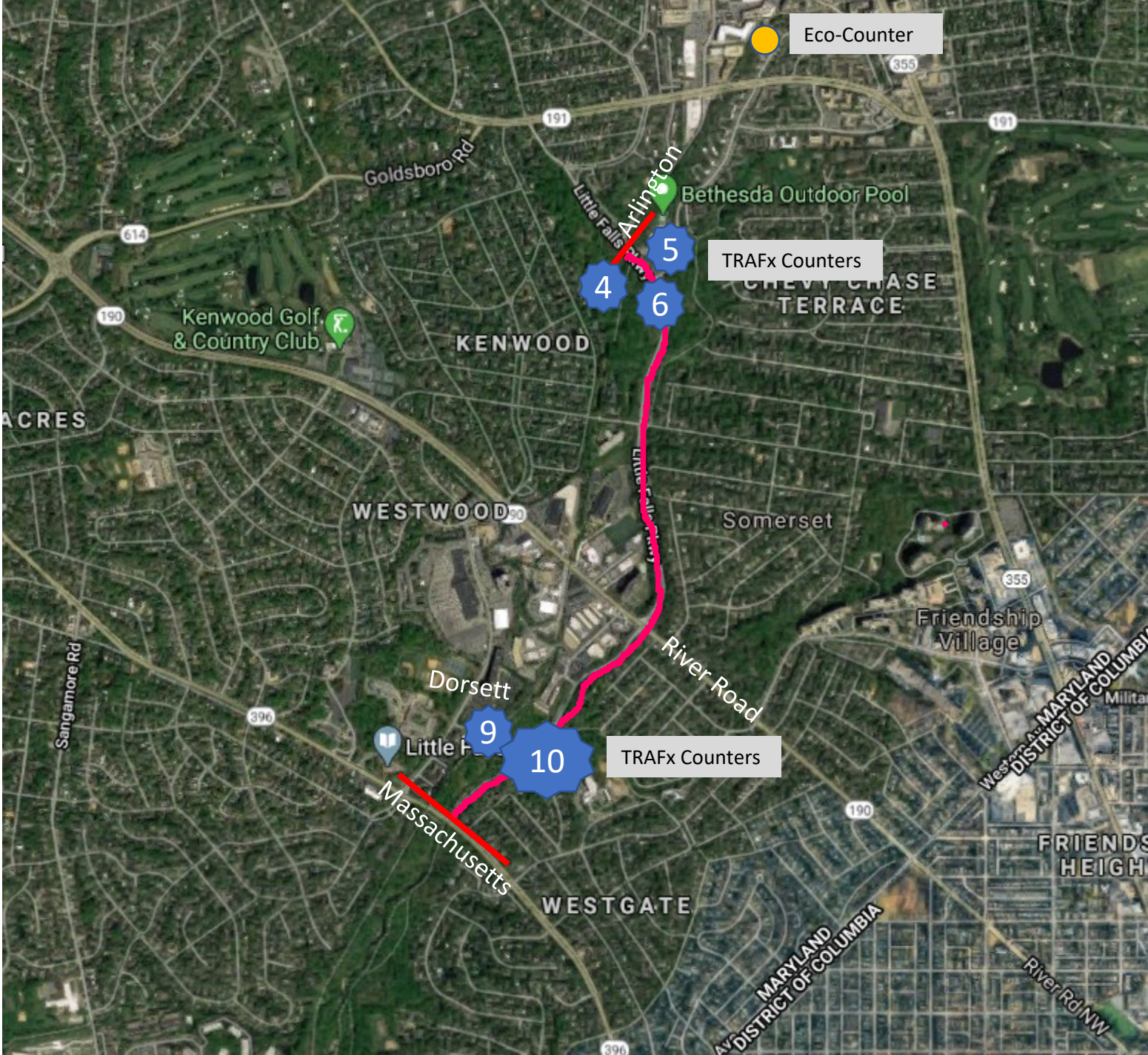


Counter Locations

Little Falls Parkway Closure from
Massachusetts Ave to Arlington.
Friday – Sunday (24 Hours)

Distance: 1.33 miles
Mass Ave to Bethesda
Outdoor Pool

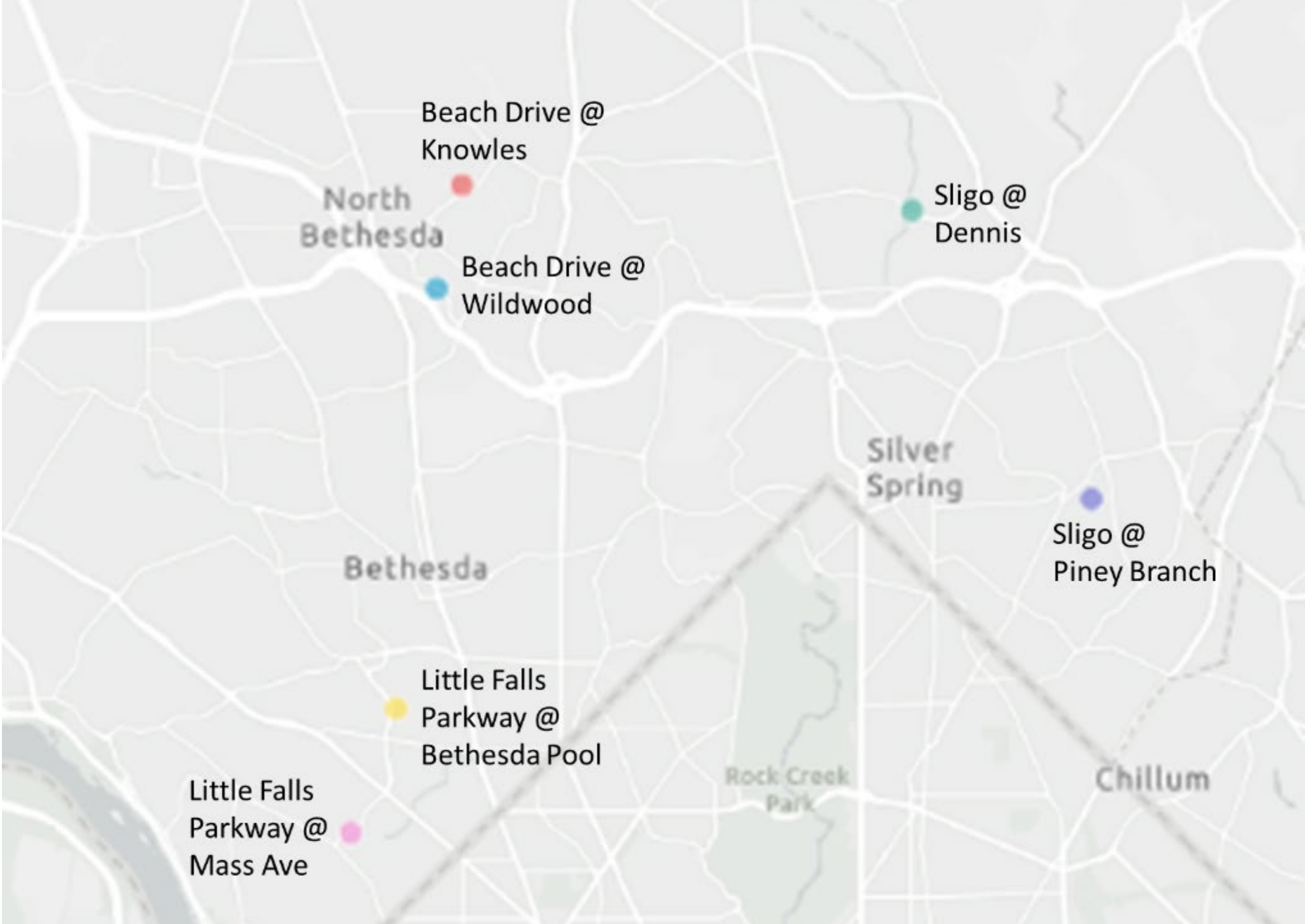
The other CCT Eco-Counter is south at
Dalecaria/Macarthur
Boulevard, near the DC
boundary



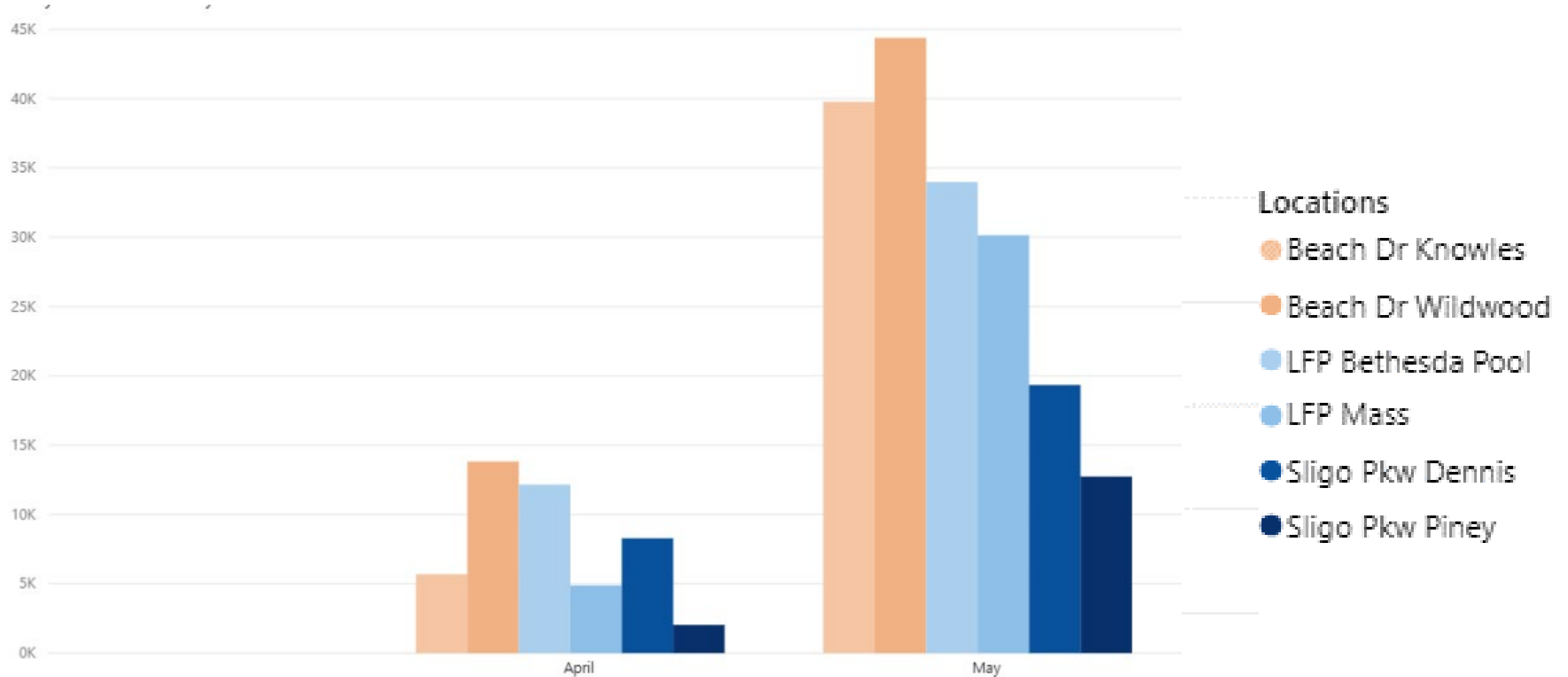


Counts

Parkway Counter Locations

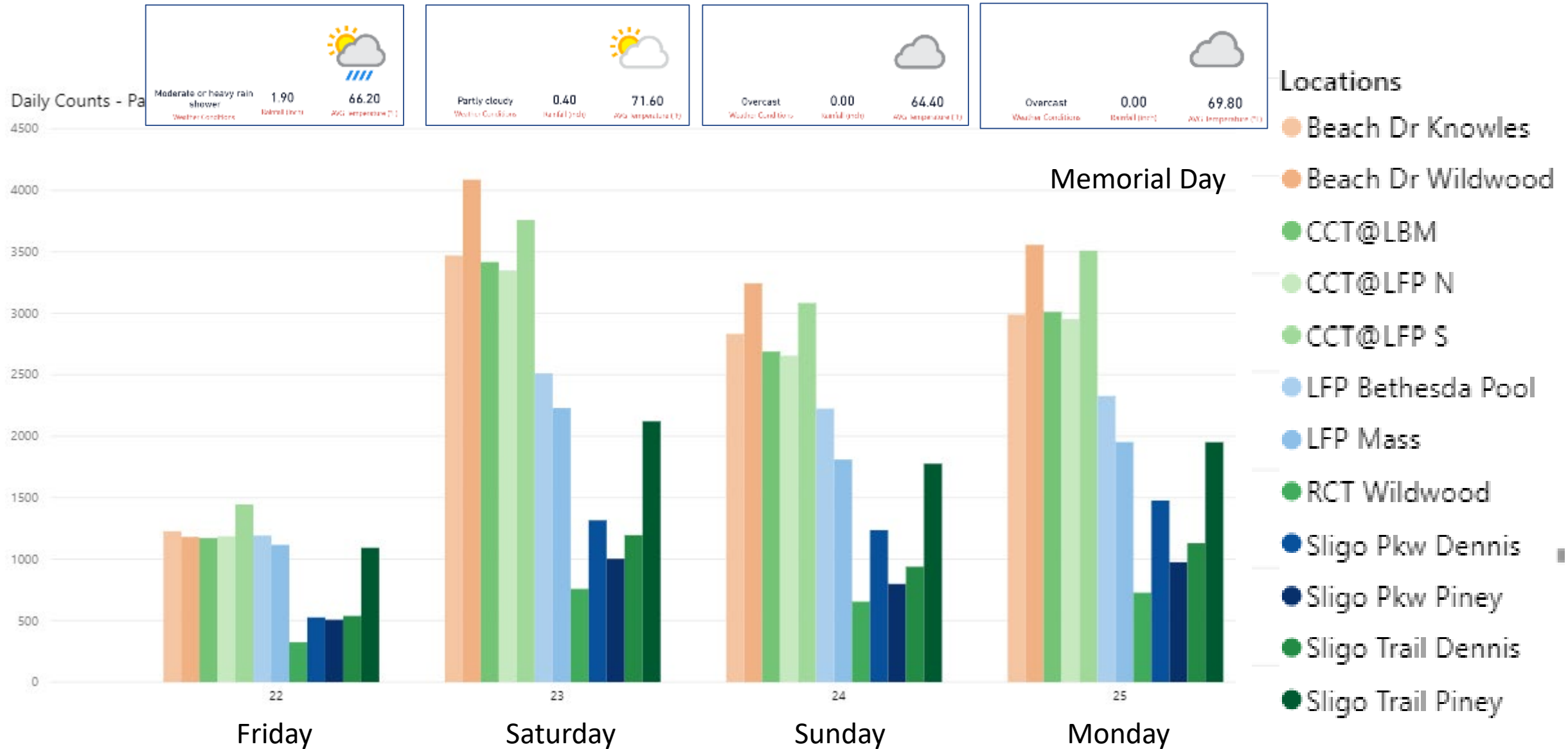


Guesses?



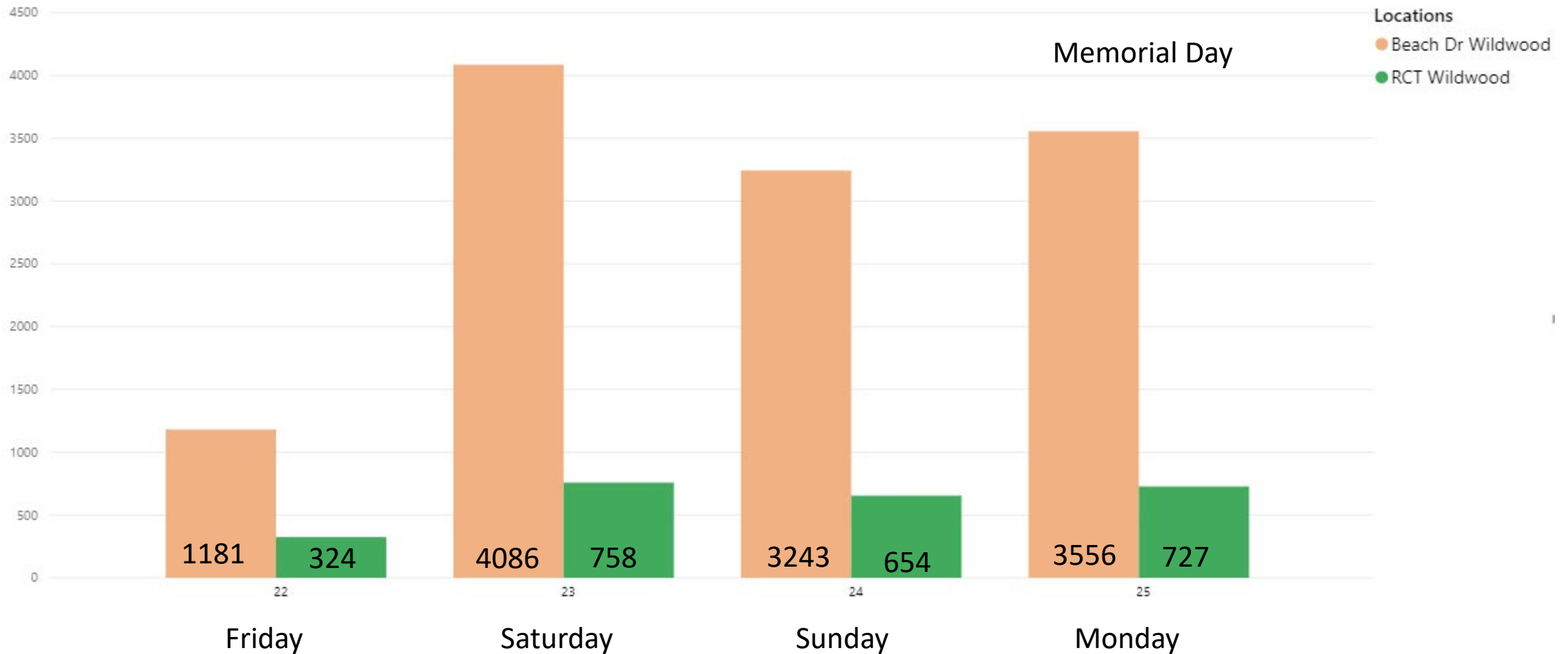
Note: Revised numbers since previous version of this slide.

Memorial Day Weekend (May 22, 23, 24, 25)



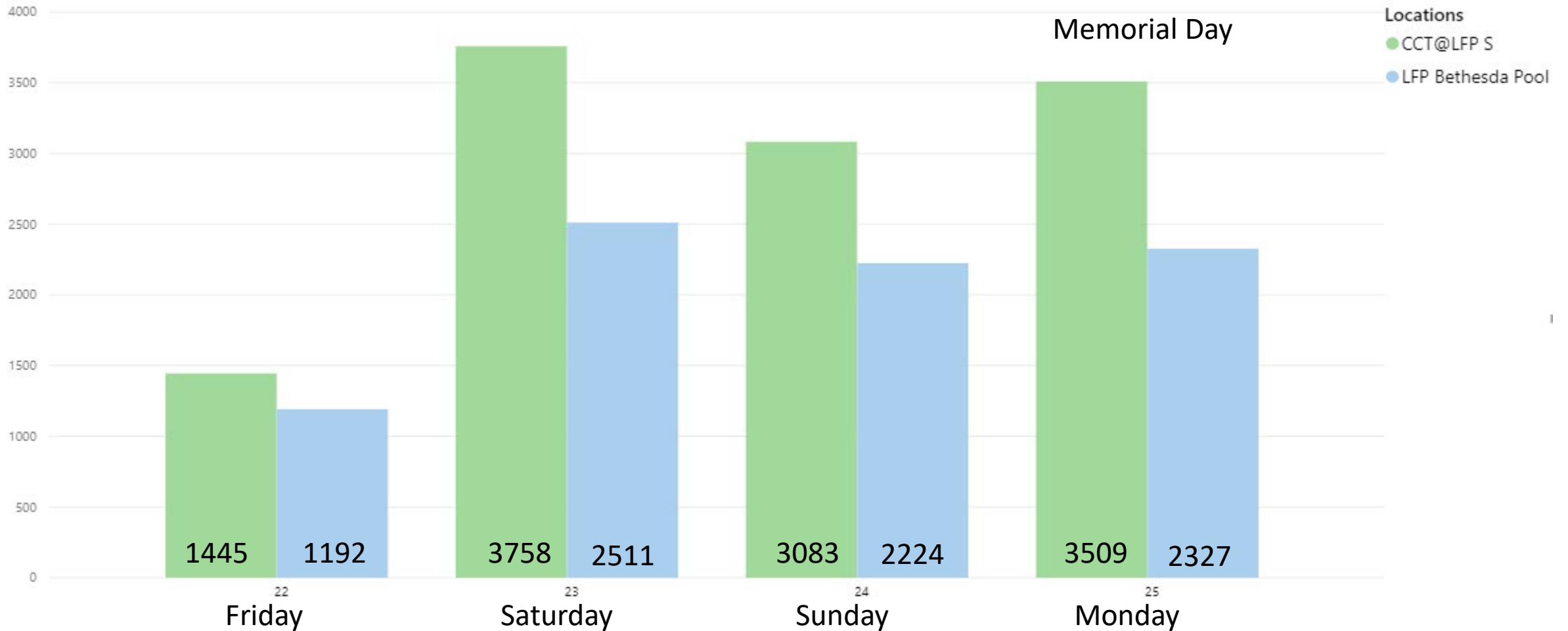
Trail vs. Parkway -- Beach Dr. & Rock Creek Trail

Daily Counts - Parkways & Trails



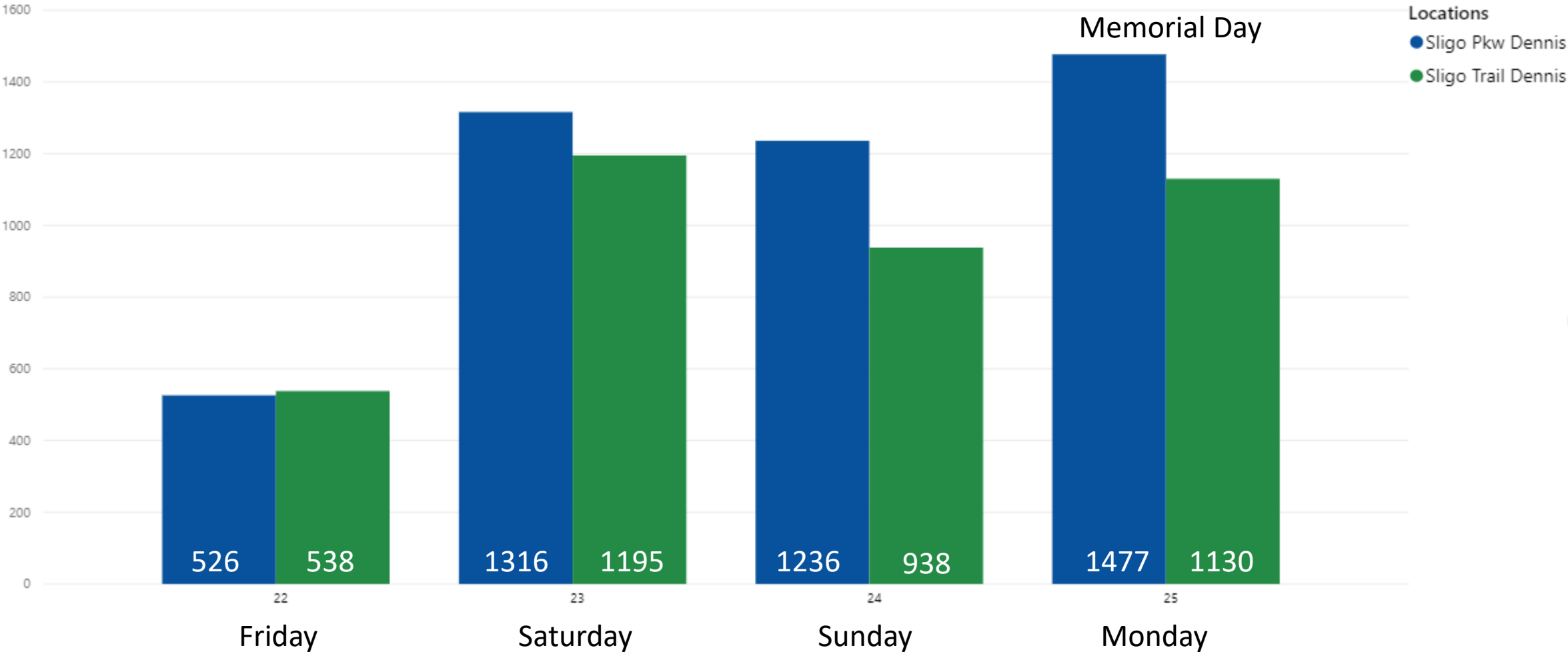
Trail vs. Parkway -- Capital Crescent Trail & Little Falls Parkway

Daily Counts - Parkways & Trails

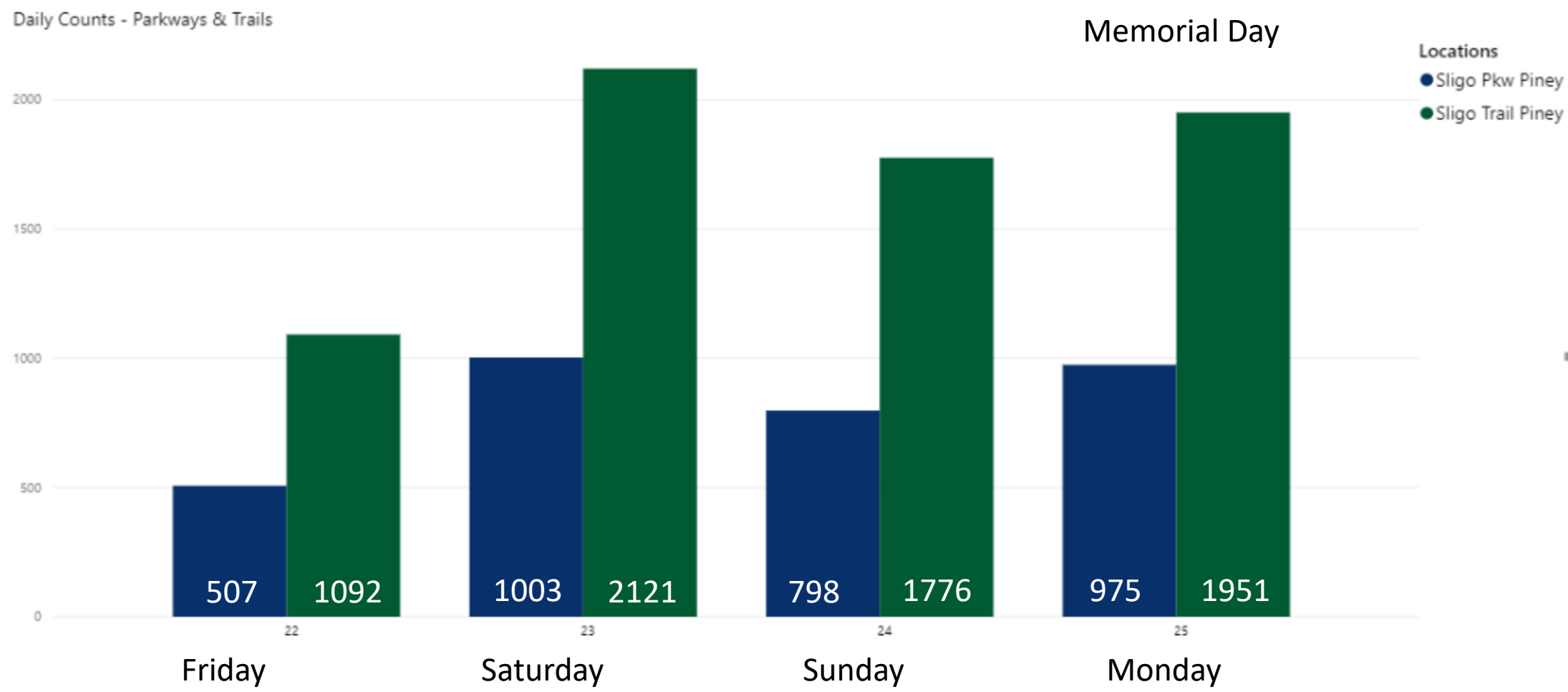


Trail vs. Parkway -- Sligo @ Dennis Ave.

Daily Counts - Parkways & Trails

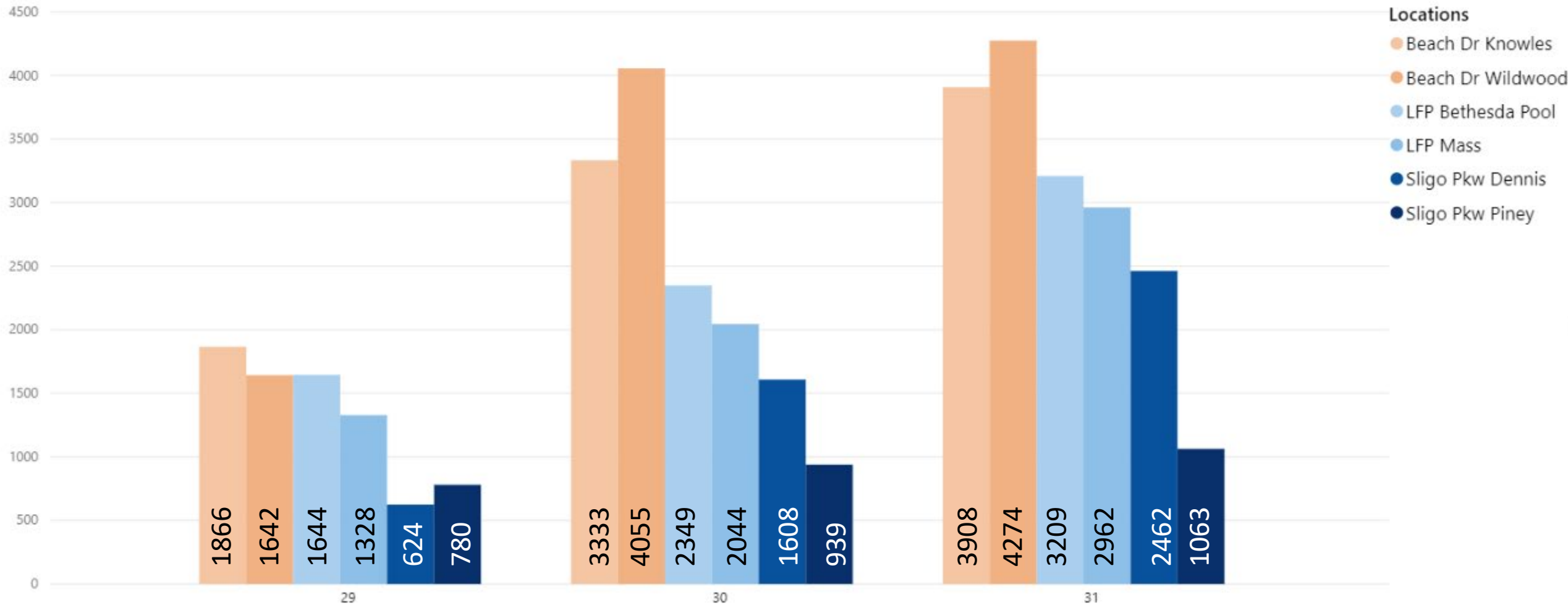


Trail vs. Parkway -- Sligo @ Piney Branch Road



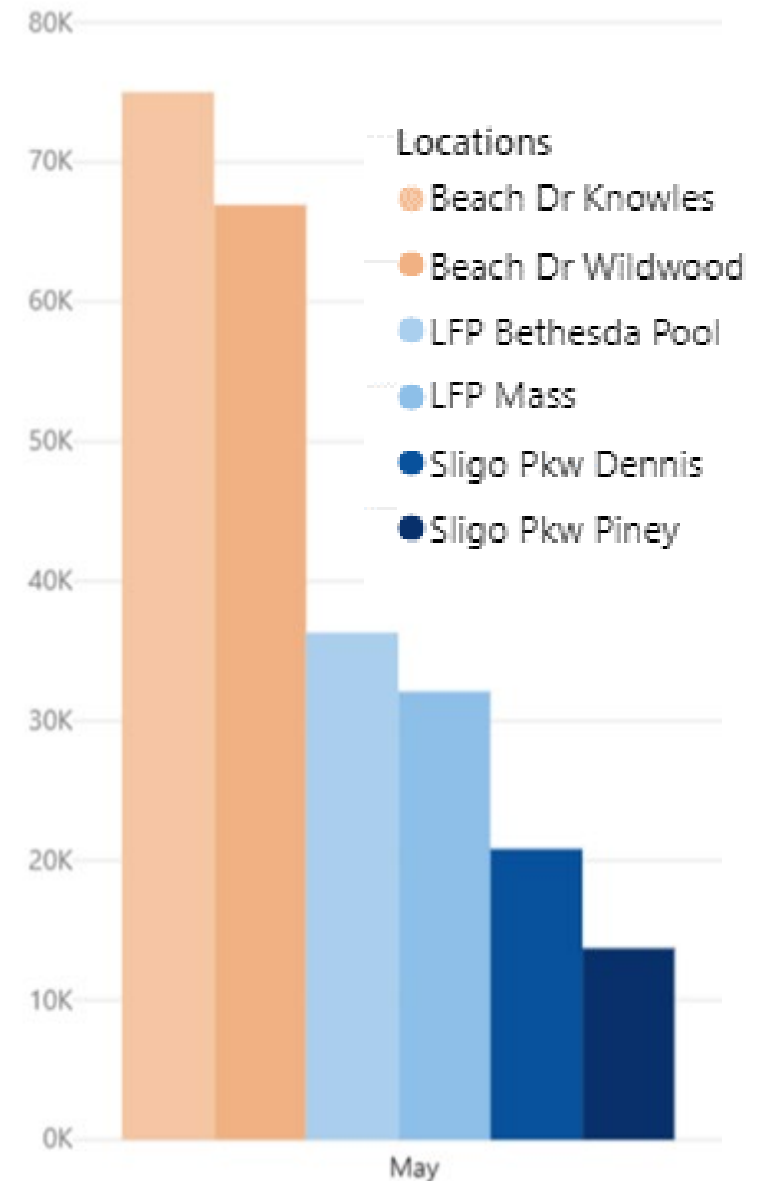
May 29, 30, 31

Daily Counts - Parkways & Trails



Counting Conclusions

- The Open Parkways have provided additional space for 10s of thousands of users
- Where the Open Parkway is consistently visible from the trail, parkway use increases
- Weather matters
- Volumes across locations vary, but tend to trend together based on day of the week and weather



Feedback & Lessons Learned

- More messaging on trails to direct trail users to Parkway closures and encourage physical distancing
- More room at crossings; People are being channelized to narrow gaps & mud
- Larger maps
- Welcome Banners: “Road Closed to Motor Vehicles. Open for Walking and Biking.”
- Drop “Ahead” from road closure signs



Stencils



Stencils



Note: We moved away from colored text, due to legibility issues.

Stencils





Gates



ure: Sligo Creek
way (South)

motor vehicle traffic,
to Sunday & part

From Branch Road to Maple Avenue
Maple Avenue to Old Capitol Avenue

Distance: 0.2 miles

Maple Avenue Station
There are 1000 ft. of trail
between the two stations.

SPEED
LIMIT
25
RADAR
ENFORCED

Connecticut Ave. & Beach Drive - Before



Connecticut Ave and Beach Drive – Interim



Connecticut Ave. and Beach Dr. -- Now



Old Carroll -- Before



Old Carroll – Interim



Old Carroll – Now



Little Falls Parkway



Thanks for
listening!