

AN URBAN AG RESERVE IN MONTGOMERY COUNTY

Silver Spring based land trust prepares to create a Conservation Plan
that helps carry out Thrive's urban agriculture goals



philipmartin.com

The Charles Koiner Conservancy for Urban Farming

Kate Medina
Executive Director

Hannah Sholder
Director of Land Stewardship
and Farm Management



moonhollowing

CKC'S NONPROFIT PILLARS

➤ Land Stewardship

- Redefine highest & best use of land
- Local land oversight & governance
- Equitable access to land

➤ Farm Management

- Fresh, healthy, quality food
- Safe, clean urban operation
- Neighborhood involvement

➤ Education

- Training the next generation
- Community connections



“Residents have access to healthy local food provided through agriculture integrated into urban and suburban neighborhoods and increased local food production in the Agricultural Reserve.”

Draft Vision & Goals Document, Thrive Montgomery 2050

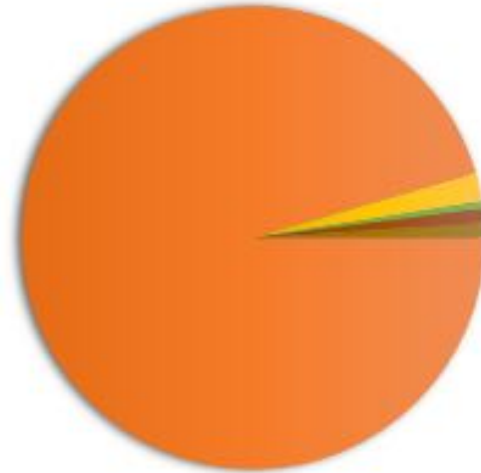
Components of Our Local Food System:

-Ag Reserve Farms

-Urban Farms

-Community Gardens

-Backyard/School Gardens



- **545 Farms in Ag Reserve (93,000 acres)**
- **1 Urban Farm (1 acre)**
- **14 Community Gardens (~ 4 acres)**
- **? Backyard/School Gardens (? acres)**
- **Imports**

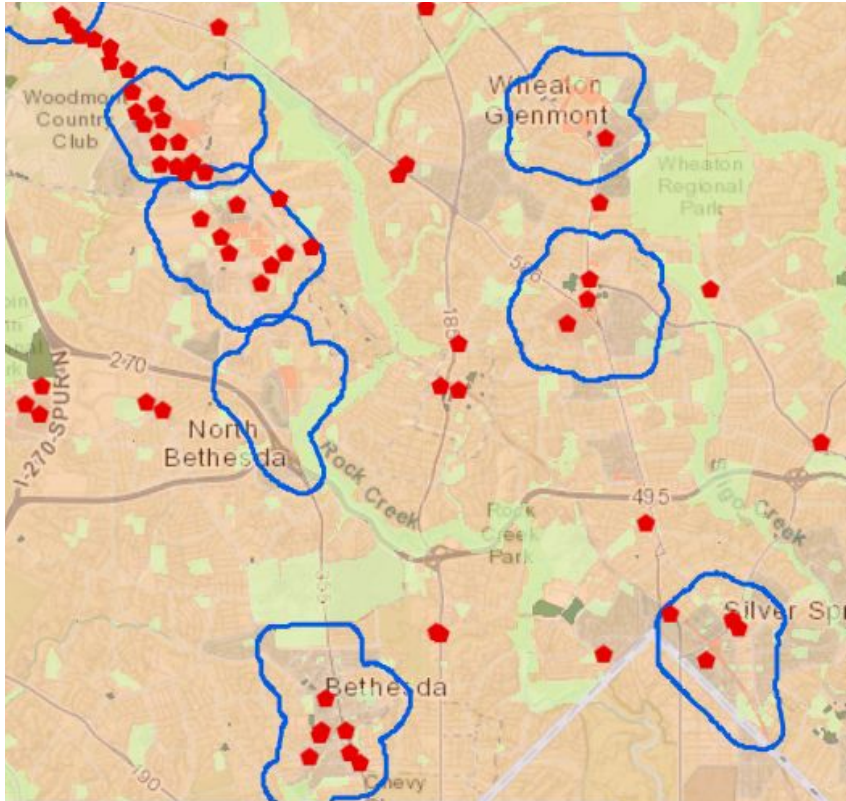
THRIVE 2050 VISION AND GOALS

How do urban farms address the County's goals?

- Goals 2, 3 & 7: Resilient and Diverse Economy
- Goal 2: Neighborhood Connections
- Goal 3: Training the Next Generation
- Goal 6: Environmental Awareness & Protection
- Goal 7: Knowledgeable Consumers
- Goal 7: Increased Food Access



IDENTIFYING PROPERTIES FOR AN URBAN AG RESERVE



Stewardship

- Local stewards
- Public access
- Long-term preservation options (i.e. matching property type to policy/program)

Farm Management & Produce Distribution

- Need (e.g. food desert)
- Points of sale (population density and/or proximity to farmer's markets)

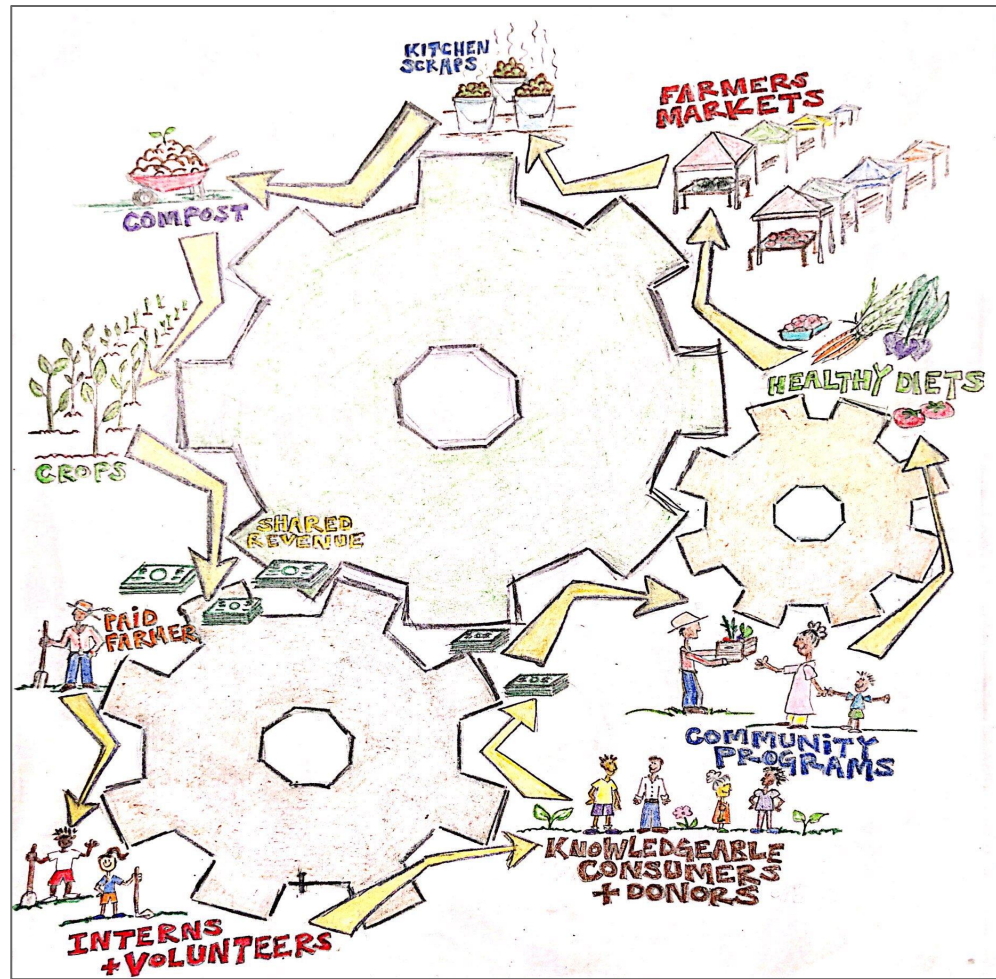
Education

- Proximity to schools
- Proximity to transit

GOVERNANCE MODEL

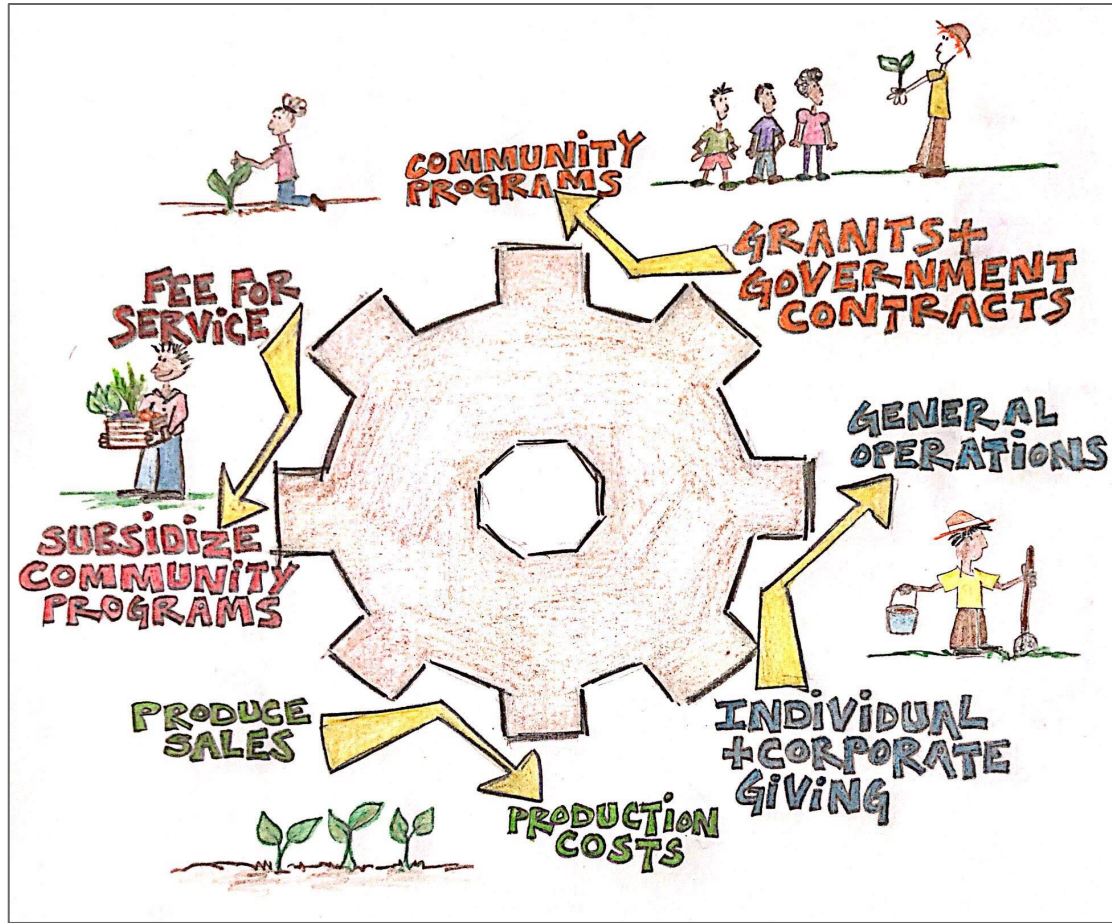
Network of Neighborhood Farms:

- Scalable
- Measurable inputs/outputs
- Stewardship chapters
- Paid farm managers
- Local volunteers
- Connections to schools



FINANCIAL MODEL

- Diverse revenue streams
- Adaptable
- Streamlined financial management
- Shared farm revenue
- Mission-driven
- Affordable, sustainable and accessible food



BRAINSTORMING POLICIES TO SUPPORT AN URBAN AG RESERVE

Private SF & MF Residential

- Enhanced urban ag tax credit?

Private MF & Commercial

- Activate open spaces via points?

Public Land

- Identify new sites?
- Additional layers of protection?

Public/Private Partnerships

- Long term leases?

