



Montgomery Planning

Historic Preservation Office

11/13/2019



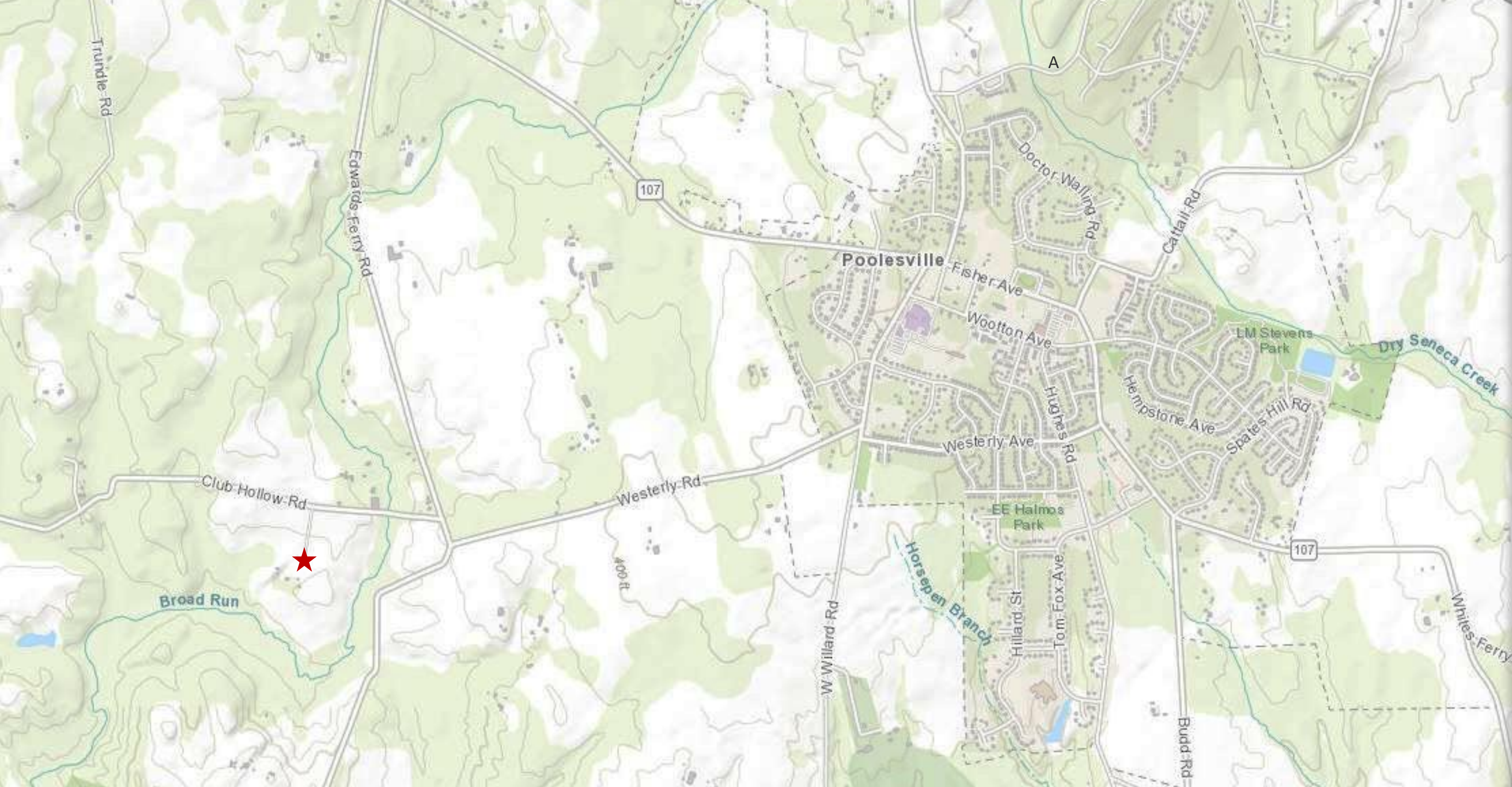
## Thomas H. White House

Removal from the *Locational Atlas & Index of Historic Sites*



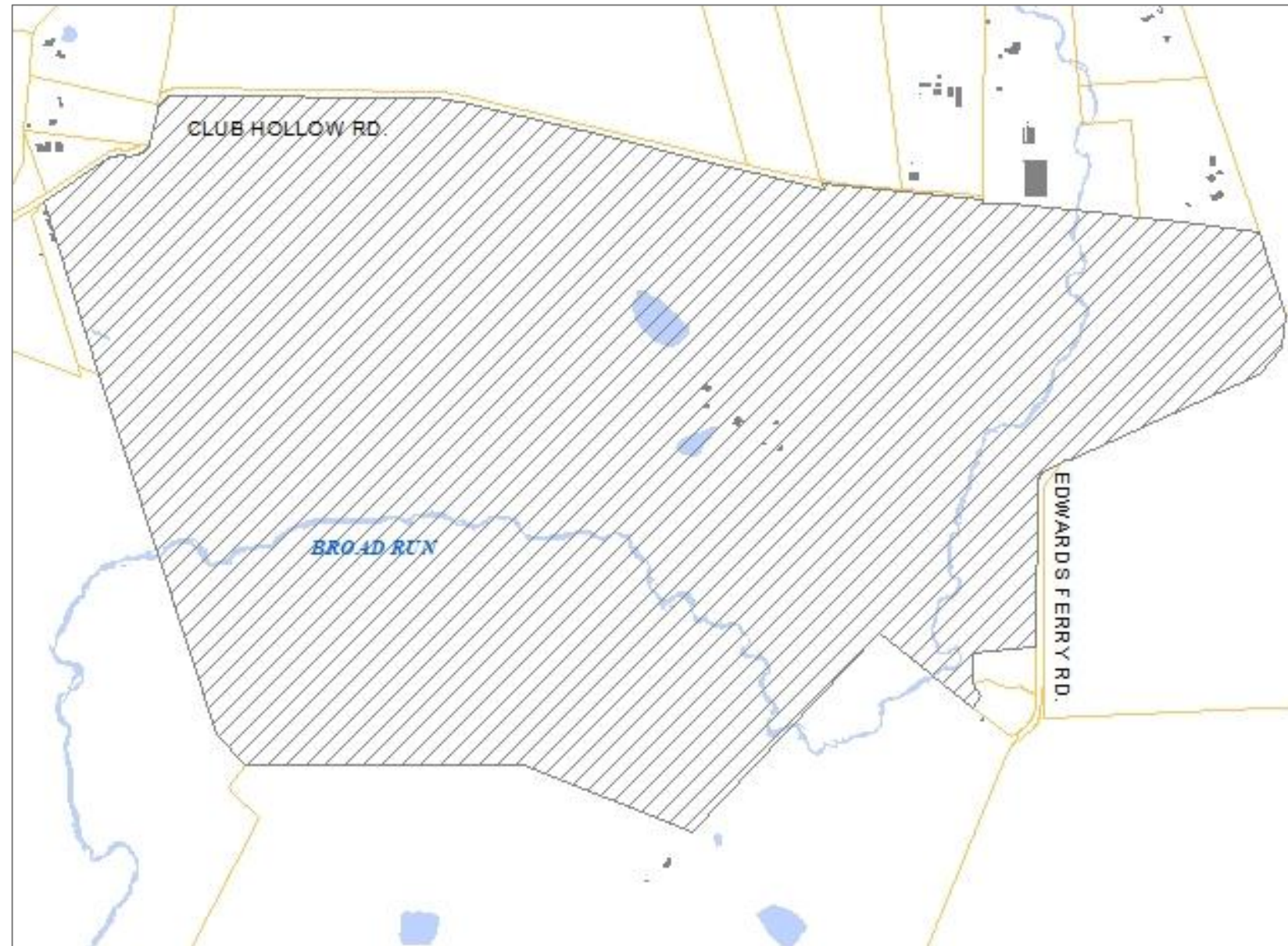
# Site Description







# Environmental Setting





# Architectural Description





North and West Elevations





South and East Elevations





1973





UNDATED



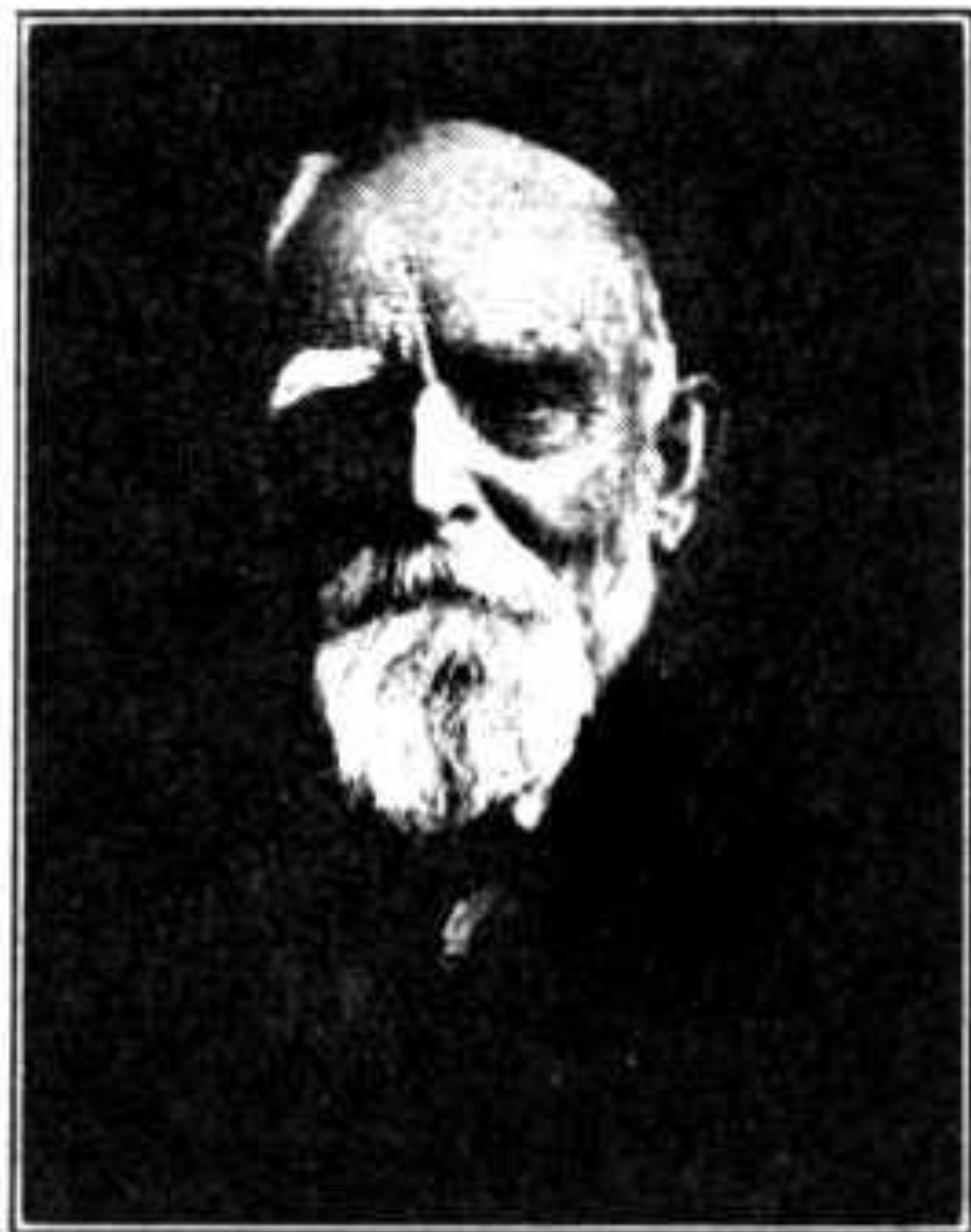
# Outbuildings





# Historic Context

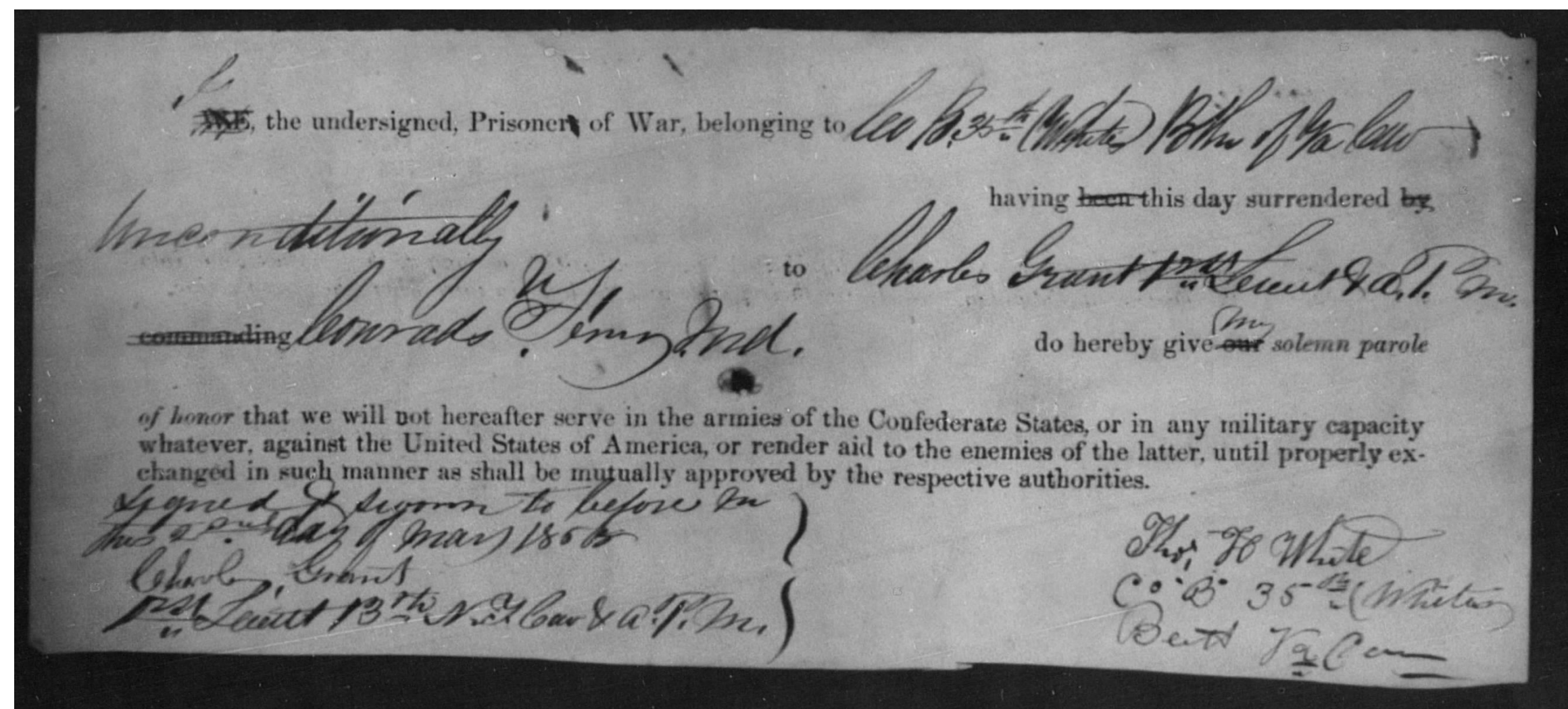




THOMAS H. WHITE.

# Thomas Henry White

1831-1930





# Discussion





# Montgomery County Code

## Chapter 24A

Historic  
Preservation  
Designation Criteria

Historical and  
Cultural  
Significance

Architectural and  
Design Significance



# Nearby Resources



Joseph C. White House (#18/14)



Edward J. Chiswell Farm Complex (#16/2)



## Staff Recommendation

Due to the property's failure to meet designation criteria, recommend that the Planning Board remove the Thomas H. White House from the *Locational Atlas & Index of Historic Sites*.



# Questions/Comments

**KACY ROHN**

**HISTORIC PRESERVATION SPECIALIST**

**KACY.ROHN@MONTGOMERYPLANNING.ORG**