



Montgomery Planning Historic Preservation Office

9/25/2019

National Sand and Gravel Association & National Ready Mixed Concrete Association Headquarters

Listing in the Locational Atlas & Index of Historic Sites



Historic Preservation Ordinance Purpose

Identify, designate, and regulate for the purposes of protection sites of architectural, archaeological, and/or cultural value

Preserve the quality of life, safeguard historical and cultural heritage, strengthen the local economy, and stabilize and improve property values

Foster civic beauty and to preserve continued utilization of the site for the pleasure of our citizens

Historic Preservation Designation Criteria

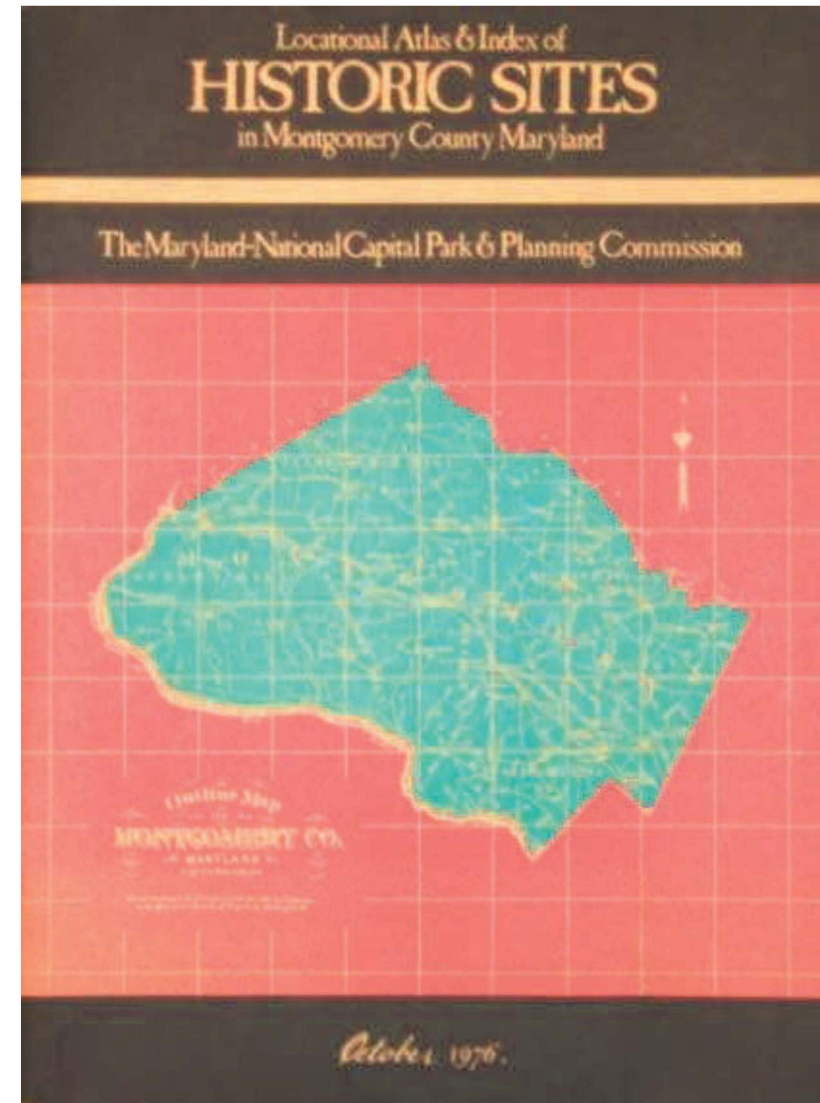
Historical and Cultural Significance

Architectural and Design Significance

Designation Process

Historic Preservation Commission

Planning Board – Public Hearing



Architectural Description

900 Spring Street, Silver Spring



Description of the Headquarters

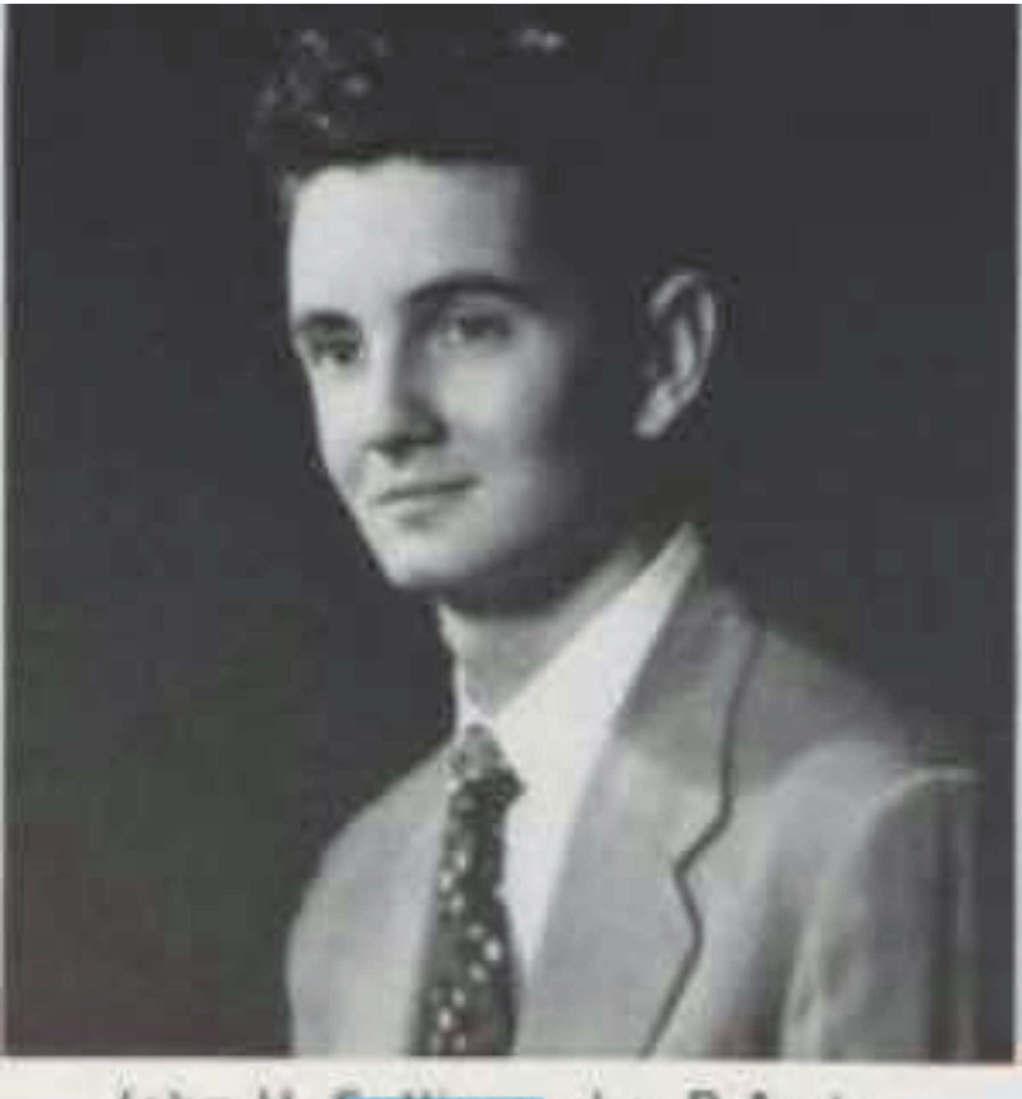


History of Organizations and Headquarters



NSGA & NRMCA History

- Organized in 1911 (under a different name); Reorganized as the NSGA in 1923.
- NRMCA organized in 1930.
- Headquarters of both organizations in Washington, D.C. prior to moving to Silver Spring in 1964.
- Associations hire John H. Sullivan, Jr., to design the shared headquarters in Montgomery County.



John (Jack) Henry Sullivan, Jr.

- WWII Veteran.
- Graduate of Catholic University School of Architecture.
- Prolific architect in Montgomery County and the region.

Top Design Awards

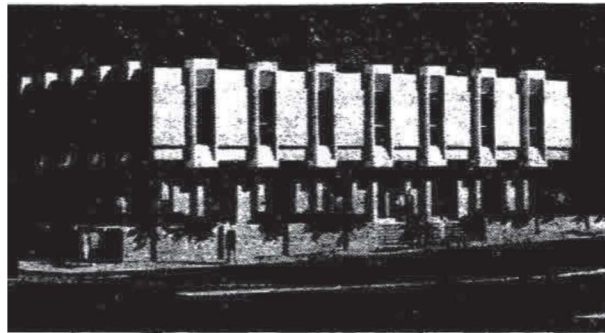
A contemporary style summer home in Riva, Md., near Annapolis has won the top award in the fifth biennial competition of the Potomac Valley Chapter of the American Institute of Architects.

Hugh Newell Jacobsen, whose design was judged best in the competition, received the award along with three other first place winners and five award of merit winners at a banquet Wednesday night.

Architects winning other first place awards were Harold Lloyd Eton for a home in Brookeville, Md.; John Henry Sullivan for a headquarters building in Silver Spring, and Cooper & Auerbach for an office building in Washington.

Reyes, Lethbridge & Condon won two awards of merit—one for the Wheaton Youth Center, and the other for homes at the Carderock Springs community.

Other awards of merit winners were Faulkner, Kingsbury & Stenhouse for the Holy Cross Hospital of Silver Spring; Coho, Hall & Associates for the Munson Hill Towers apartments in Fairfax County, and Delbert and Yerkes & Associates for the National Arboretum Headquarters Building.



NOVEL DESIGN FOR BUILDING



New Silver Spring Associations Building

“[The building] will make ample provision for housing the staff of the associations and will also allow for utilization of additional space as the requirements of the association make it necessary. The building will symbolize the two industries which the associations represent...”

- Report on the NSGA Directors Meeting, December 1962

“A milestone in the history of NSGA-NRMCA was the completion of the new \$460,000 office building in Silver Spring, MD.”

-Report on the NSGA President's address noted in Pitt & Quarry, April 1965.



[E-Store Search](#)

[Site Search](#)

Google Custom Search

SERVICES AND DEPARTMENTS

- ▶ [Membership](#)
- ▶ [Certification](#)
- ▶ [Conferences | Events](#)
- ▶ [Government Affairs](#)
- ▶ [Promotion](#)
- ▶ [Research | Engineering](#)
- ▶ [Codes | Standards](#)
- ▶ [Operations, Safety and Environmental](#)
- ▶ [Sustainability](#)
- ▶ [Resilience](#)

- [Overview](#)
- [Employment Opportunities](#)
- [NRMCA History](#)
- [Visiting NRMCA](#)
- [Board of Directors](#)
- [Committees List](#)

ABOUT NRMCA

[Overview](#) | [NRMCA Facilities](#) | [Staff](#) | [Board of Directors](#)

Decades of Dedication: The NRMCA Story

[1930-1939](#) | [1940-1949](#) | [1950-1959](#) | [1960-1969](#) | [1970-1979](#) | [1980-1989](#) | [1990-1999](#) | [2000-2005](#)

1960-1969

NRMCA Headquarters

NRMCA kicked off this decade with a move to a new headquarters in Silver Spring, MD. The new office building, built of reinforced concrete, of course, opened in 1962 and also housed NRMCA's sister organization, the National Sand and Gravel Association. The total cost of the land and building was \$480,000, and it was proudly noted that [the building] was built without borrowing and without asking member companies for contributions. In fact, the headquarters' distinctive design and structural creativity won it a top award in a regional architecture contest in 1964. This two-story building at 900 Spring Street



MEMBERS ONLY

[MEMBER LOG-IN](#)

POPULAR LINKS

[Build with Strength
Member Resources](#)

[Pave Ahead
Project Assistance](#)

[CDP Driver Cert.](#)

[Concrete In Practice](#)

[Technology In Practice](#)

[Green-Star Program](#)

[InFocus Magazine](#)

Modernism, Brutalism, and Corporate Architecture

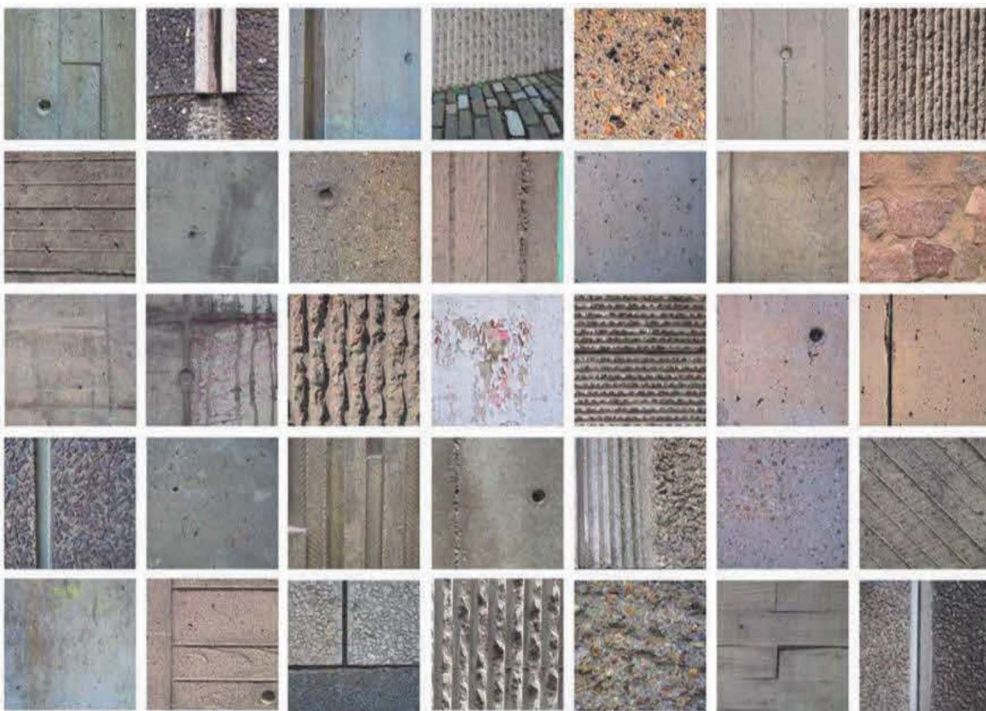
Modernism and Brutalism

Brutalism is generally defined by:

- Use of exposed concrete (often revealing the texture of the wooden forms used for the casting);
- Emphasis on sculptural qualities, mass, and solidity;
- A weight and massiveness that separates it from other flat-roof buildings;
- Recessed windows and doors that function as voids in solid walls;
- Broad expansive surfaces; and
- Repetitive patterns.



Variations in Concrete



Examples of Smaller Scale Brutalism



Corporate Architecture

Corporate architecture can:

- Leverage architectural design to project elements of their goals, vision, and products;
- Visually communicate identity;
- Express an organizational message; and
- Create a presence in a built environment.



Staff Recommendation

Chapter 24A - Designation Criteria

Architectural and Design Significance

2.A) Embodies the distinctive characteristics of a type, period, or method of construction

2.E) Represents an establish and familiar visual feature of the neighborhood

Environmental Setting

- Irregular-shaped lot at the intersection of Spring Street and Ellsworth Drive.
- Includes the two parcels on which the building is located; the other parcels owned by the NRMCA are outside of the boundary of the environmental setting.

Staff Recommendation

- Based on the property meeting two designation criteria, list the NSGA and NRMCA Headquarters, 900 Spring Street, in the *Locational Atlas & Index of Historic Sites*.

Examples of Resources Listed Based on Singular Criterion

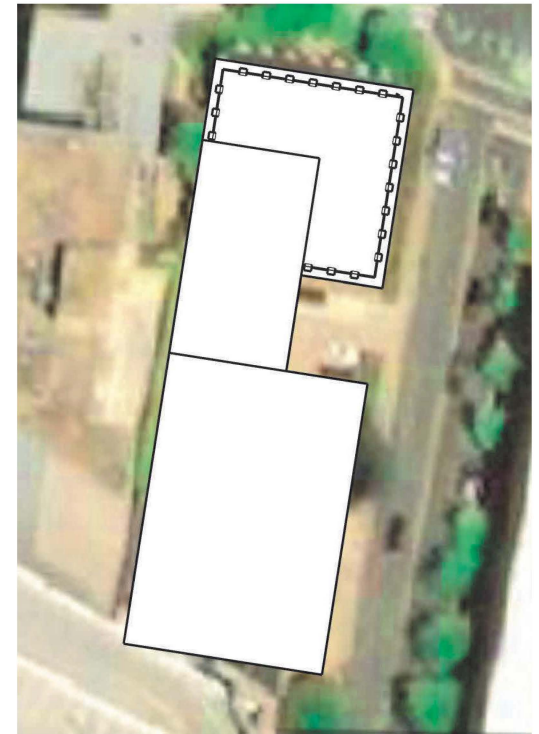
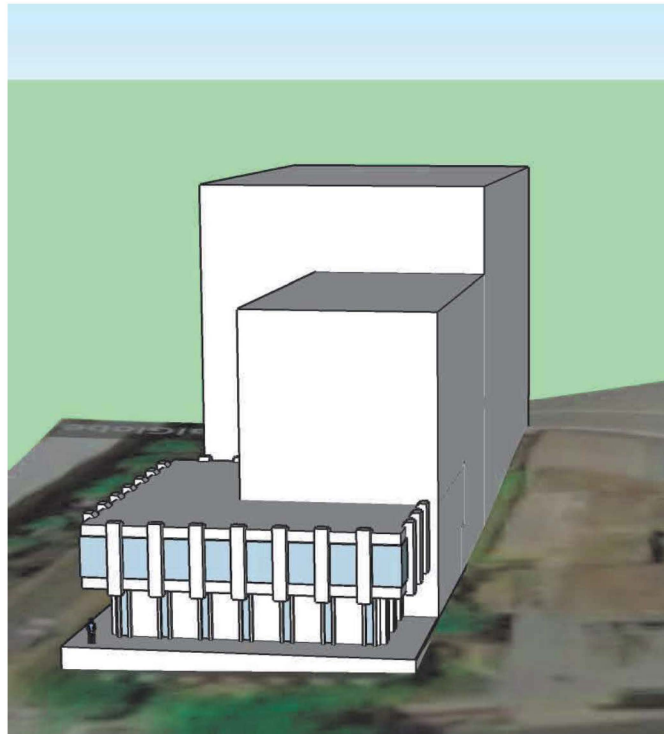
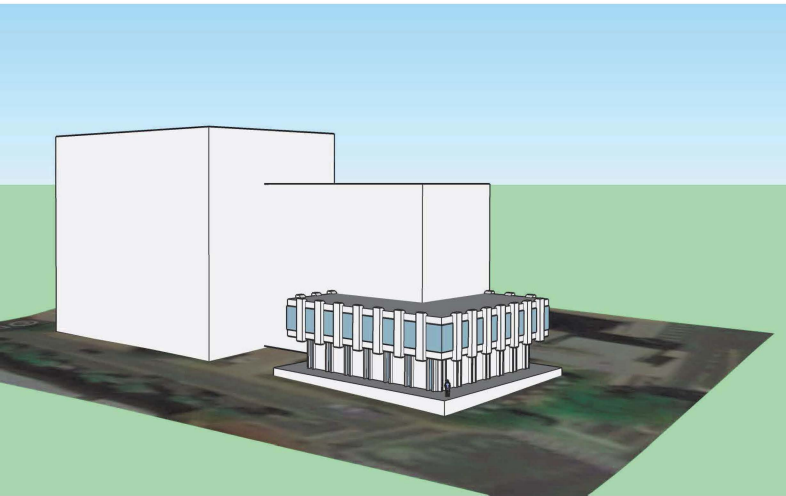
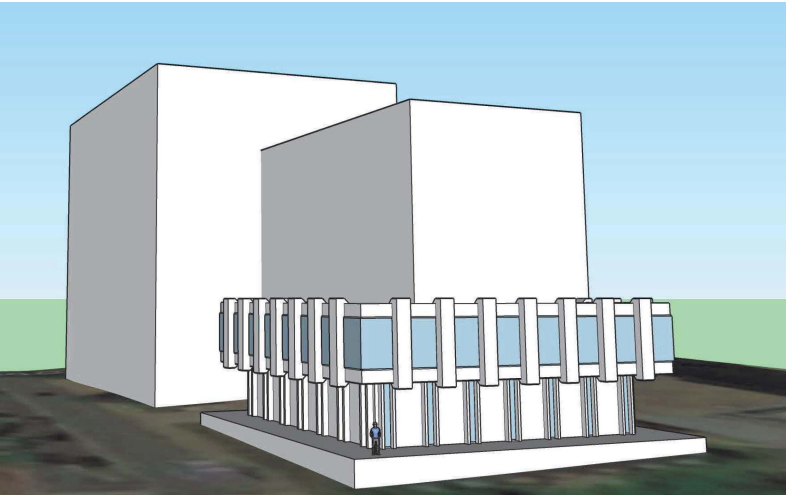


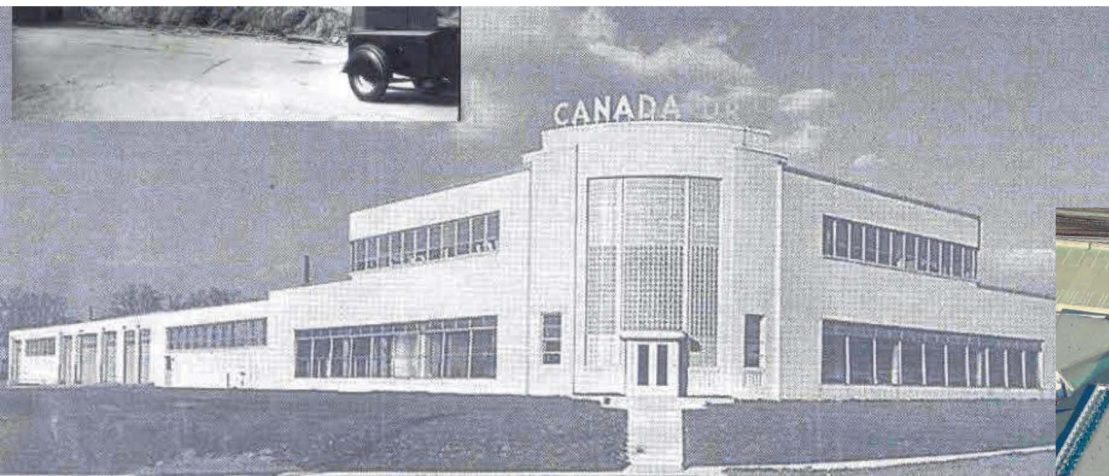
- Aspin Hill Pet Cemetery (M: 27/17)
- Tastee Diner (M: 36-13)
- WTOP Transmitter Building (M: 31-12)
- Stoney Castle (M: 17/26)



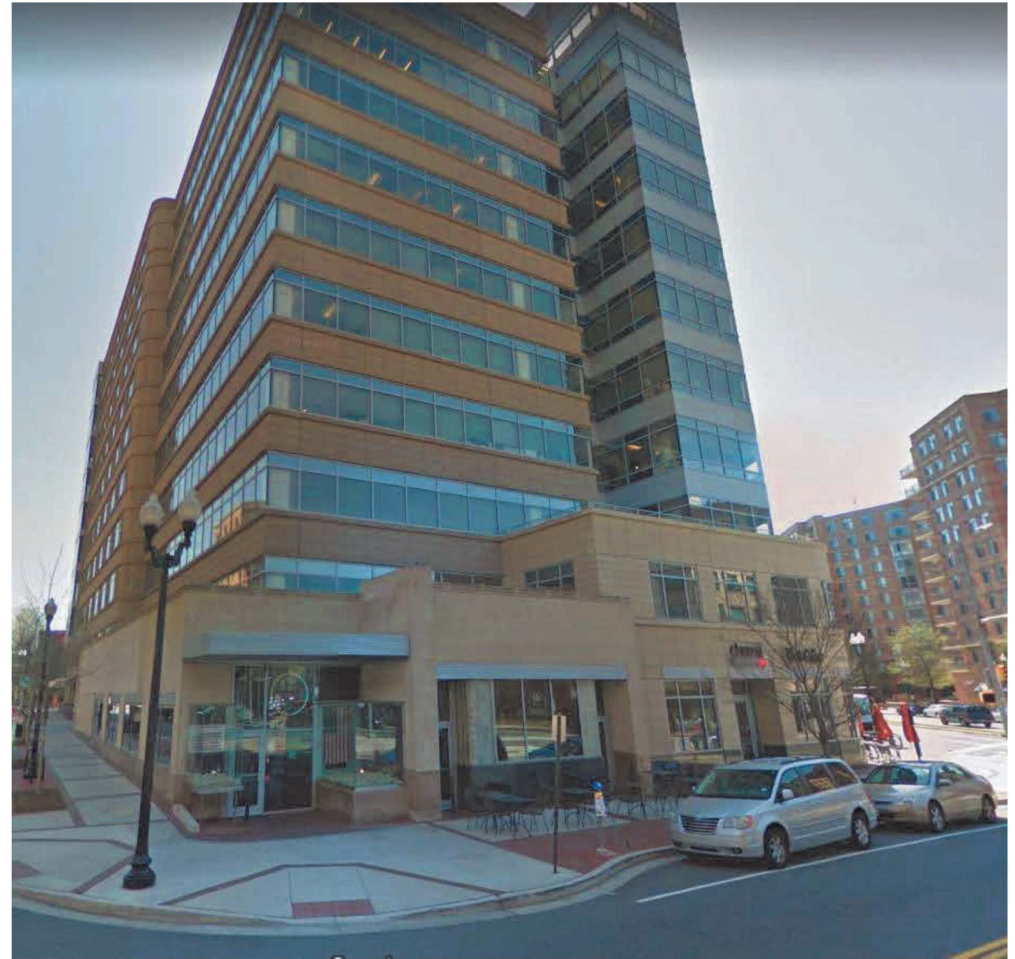
Preservation Options

Preservation Options



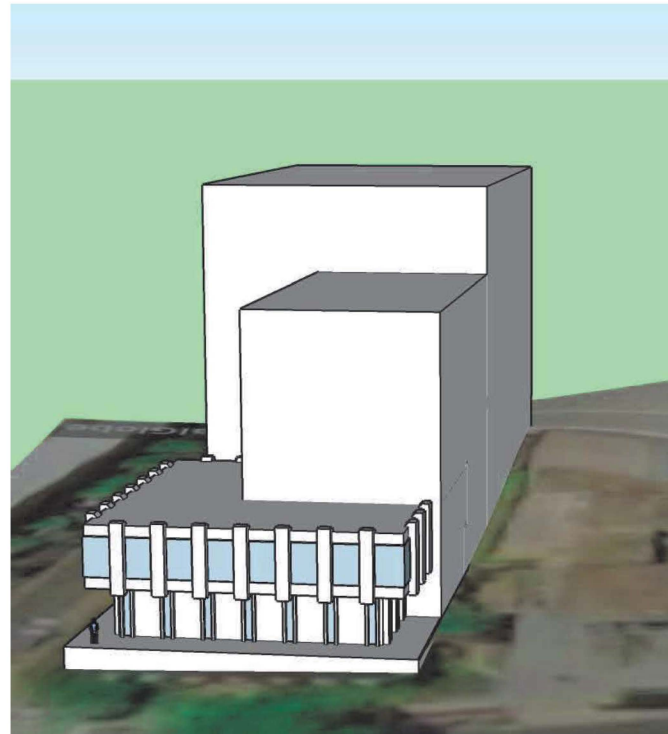
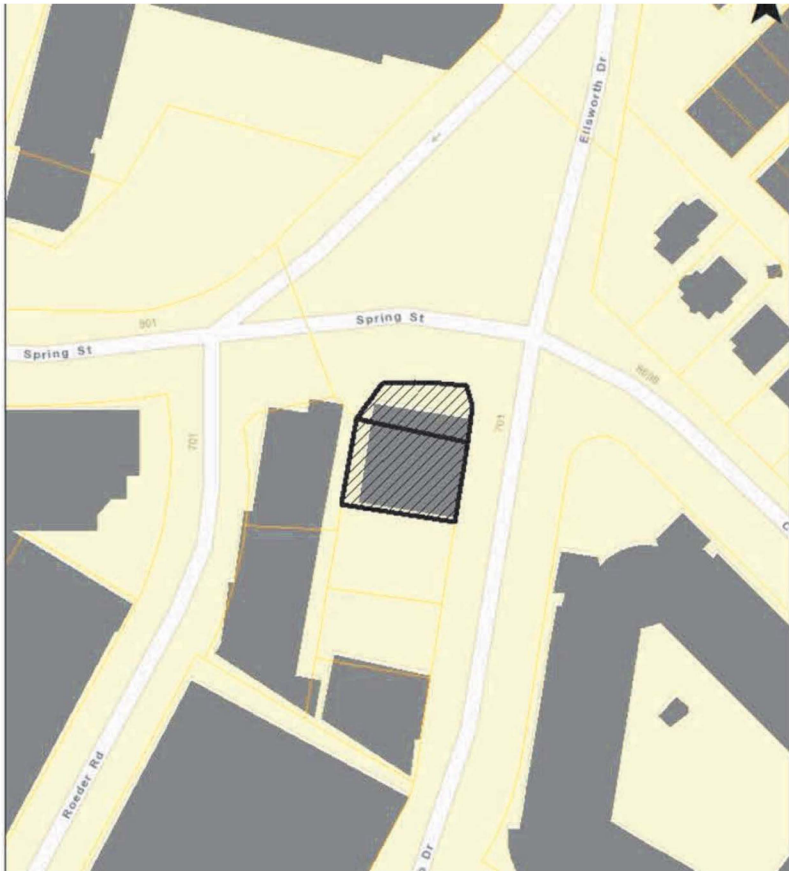


NSGA & NRMCA Headquarters, 900 Spring Street



❏ NSGA & NRMCA Headquarters, 900 Spring Street

Preservation Options



Questions/Comments

JOHN LIEBERTZ

HISTORIC PRESERVATION SPECIALIST

JOHN.LIEBERTZ@MONTGOMERYPLANNING.ORG



NSGA & NRMCA Headquarters, 900 Spring Street

9/25/2019 26