

IMPLEMENTING THE VISION

Developing a plan for a world-class bicycling community is the starting point. Taking the vision of the Bicycle Master Plan to reality will require a transformation in how Montgomery County incorporates bicycling into all aspects of its decision-making. The five main components of the implementation strategy are to:

1. Encourage a strong bicycling community.
2. Establish a task force to oversee implementation of the Bicycle Master Plan.
3. Develop small area infrastructure plans that serve as a bridge between the master plan and its implementation in areas of the county with significant development potential.
4. Upgrade design standards to reflect best practices.
5. Update mechanisms for implementation, bringing together public and private entities to create a high-quality bicycling network.
6. Prioritize the recommendations of the Bicycle Master Plan.

ENCOURAGING A STRONG BICYCLING COMMUNITY

Creating a world-class bicycling community requires more than building a bicycling network. The network needs to be promoted and supported by a vibrant bicycling culture. A world-class bicycle plan reaches beyond infrastructure to address programmatic elements and foster a culture of bicycling.

Montgomery County can help by establishing a BikeMontgomery Outreach Program, described on page 105 of this plan. Indicators of a healthy bicycling culture can include high profile public events, popular and festive group rides, places with a reputation as a bicycling destinations or simply a common acceptance among most people that bicycling is a normal, practical and useful mode of transportation.





The Washington Area Bicyclist Association's Celebrate the Silver Spring Circle! in 2017 was supported in part by the Montgomery County Planning Department and Department of Transportation.

ESTABLISHING A BICYCLE MASTER PLAN IMPLEMENTATION TASK FORCE

Upon approval of the Bicycle Master Plan, the Planning Board will establish a Bicycle Master Plan Implementation Task Force to guide implementation of the recommendations in the plan. This staff-level task force will include representatives of the Montgomery County Department of Transportation (Director's Office, Traffic Engineering, Transportation Engineering), Maryland State Highway Administration, Planning Department (Development Review, Bicycle Planning), Department of Parks, Department of General Services, Department of Permitting Services, CountyStat, Maryland Transit Administration and Washington Metropolitan Area Transit Authority. This task force will meet regularly to discuss ways to encourage bicycling and facilitate implementation of the Bicycle Master Plan. It will be chaired by the Montgomery County Planning Department and will report annually to the Montgomery County Council about the progress of the plan.

SMALL AREA INFRASTRUCTURE PLANS

The Bicycle Master Plan offers a high-level vision for a network of low-stress bikeways and bicycle storage facilities that will make Montgomery County a premier location for bicycle-based transportation and recreation. Although this plan provides many recommendations intended to accomplish this vision, it recognizes that a countywide planning effort cannot anticipate the site-specific complexities associated with each recommendation, including potential impacts on private property, traffic flow and environmental resources.

To facilitate the implementation of this plan's recommendations, the Montgomery County Department of Transportation and Montgomery County Planning Department will collaborate to create a series of small area infrastructure plans for areas of the county with high development potential. These communities include, but are not limited to, downtown Bethesda, downtown Silver Spring, Germantown, the Life Sciences Center, Rock Spring, Twinbrook, Wheaton central business district, White Flint and White Flint 2. It is anticipated that the cost of these studies will be recouped through greater construction of the bikeway network by developers as the county is able to provide developers with greater direction in designing and building bikeways.

The small area infrastructure plans will consider previous planning efforts, including the Bicycle Pedestrian Priority Area studies completed by the Montgomery County Department of Transportation and may incorporate recommendations from those studies.

The Montgomery County Planning Board may approve additional locations as appropriate for the development of small area infrastructure plans. Such plans will provide interim designs, where appropriate, and permanent designs for the bicycle facilities recommended in the Bicycle Master Plan. An interim design option will include a bikeway network that is likely to be implemented through public or private efforts, within the next five years. The permanent design option will outline what is possible during a longer period, when facility planning projects are implemented and developments are constructed.

In creating small area infrastructure plans for these areas, Montgomery County Department of Transportation and Planning Department staff will consider site-specific challenges associated with implementing the Bicycle Master Plan's recommendations and settle on preferred design options. This process will be particularly helpful in areas recommended for separated bike lanes, which can be designed in many different configurations. While a small area sketch plan is not intended to provide the only acceptable option for meeting the recommendations of the larger plan, it will offer both public and private developers a starting point for designing projects in conformance with those recommendations.

The Bicycle Master Plan envisions all small area infrastructure plans completed within three years of the plan's adoption by the Maryland-National Capital Park and Planning Commission. Each small area sketch plan must be approved by the Montgomery County Planning Board before it is considered complete.

BIKEWAY DESIGN STANDARDS

Bicycle facilities must be high-quality to attract bicyclists of all ages and bicycling abilities. For example, bike lanes designed without gutter seams, separated bikeways wide enough to accommodate expected bicycle volumes and off-street bikeways constructed with materials that will not degrade quickly as they age, are all critical to ensuring the development of a world-class bicycling network. To achieve the vision of the Bicycle Master Plan, Montgomery County will continue to update its Context-Sensitive Road Design Standards to ensure that it is delivering a high-quality product.

Trails and Sidepaths

Trails and sidepaths will continue to be the backbone of a low-stress bicycling network in most areas of Montgomery County, due to existing investments and compatibility with surrounding land uses. Unfortunately, there is a legacy of poor design of trails and sidepaths throughout the United States and these bikeways often do not create a high-quality bicycling environment. To improve the quality of new and existing trails and sidepaths, Montgomery County must revise its design standards to accommodate:

- **Design Speed:** Trails and sidepaths will be designed to enable a design speed of 12 mph in higher activity areas and 20 mph in lower areas (see page 66 for a description of these areas). Note that design speed is influenced by the pavement quality and bikeway curvature, among other conditions, and is not an endorsement of bicycling 20 mph in crowded locations.
- **Bikeway Width:** A bicycling network that allows people of all ages and bicycling abilities to use trails and sidepaths safely and conveniently requires constructing bikeways that are sufficiently wide to enable side-by-side bicycling and passing. Trails and sidepaths will be a minimum of 10 feet wide, although 8 feet is acceptable in areas with an environmental or historic constraint. A width of 11 feet enables two people to bicycle side-by-side while being passed by another bicyclist. A 14-foot-wide path is recommended on high volume trails and sidepaths. Trails of between 19 and 23 feet wide are recommended on the Breezeway Network and where a high level of existing or anticipated walking and bicycling makes it desirable to separate walking and bicycling. See Appendix B for additional design details.
- **Surface Quality:** Sidepaths in Montgomery County are plagued by degrading pavement, including pavement cracking and buckling due to the growth of tree roots. Sidepaths will be designed to withstand such root growth and vehicle loading since maintenance trucks will use them on occasion.

- **Intersections:** The design of sidepaths and trails will consider traffic control or grade separation at all mid-block crossings. Bicyclists (and pedestrians) should not be required to travel an unreasonable distance to get to a safe crossing location.
- **Driveways:** Driveways must be consolidated to the extent possible as part of development approvals and capital projects. On properties where driveways remain, property developers must improve sightlines for all users, reduce the speed of traffic and provide visual cues to motorists to look for pedestrians and bicyclists. Montgomery County will consider greater use of raised crossings along all minor street crossings and high-volume driveways.
- **Pedestrian/Bicycle-Scale Lighting:** Lighting is essential to provide safe and secure walking and bicycling facilities, and will help increase use of bikeways during the evening, especially during winter months when the sun sets earlier. While bicycle lights help with safety, they are insufficient to create a secure environment and are not typically used by pedestrians who will share these spaces.
- **Buffer from Traffic:** A minimum 5-foot-wide buffer is needed from vehicular traffic. Wider buffers are appropriate along roads with higher design speeds.
- **Obstructions:** Sidepaths must be direct and free from obstructions.



Pavement cracking is common on sidepaths

Separated Bike Lanes

Jurisdictions across the United States are using different approaches to implement separated bike lanes. Many are constructing these bikeways as interim / low-cost retrofits of existing rights-of-way using flexible delineator posts and paint, while others are constructing more permanent forms of separation, such as curb-separated bike lanes, that represent a permanent design standard. Although interim separation types can be easier to implement, agencies have raised concerns about their maintenance costs and aesthetics, noting that some of these separation types provide less protection from adjacent automobile traffic than more permanent solutions, which can be more aesthetically pleasing, although they often carry a higher cost.

Interim Separated Bike Lanes

As with many jurisdictions, Montgomery County is focusing its efforts at building a network of separated bike lanes as quickly as possible to provide responsiveness to public demands for improved bicycling and allow ongoing evaluation of new approaches to bikeways. Interim separated bike lanes address separation from traffic using flexible delineator posts, planters, parking stops, concrete barriers or rigid bollards, and are shown on the following pages. These projects substantially improve the comfort of bicycling by reducing traffic stress and make bicycling accessible to a greater segment of the population.

Responding to the strong desire to implement a network of bikeways as quickly as possible, these projects tend to employ interim designs that are low cost and may need to be upgraded over time to incorporate urban design and stormwater management opportunities and to achieve the lowest stress possible. Three features of interim separated bike lanes are discussed below.

Separated Bike Lane Widths

Interim separated bike lanes will have the following widths:

- One-way separated bike lanes: 5 feet at a minimum, exclusive of shy distances.
- Two-way separated bike lanes: 8 feet at a minimum, exclusive of shy distances.

Intersections

While the ultimate objective is to implement protected intersections as part of separated bike lane projects, this will not be feasible with all interim projects. Bike boxes and two-stage turn queue boxes are ways to improve intersections in the interim until full protected intersections can be implemented. Bike lane drops are inappropriate for interim separated bike lanes.

Separation from Traffic

Interim separated bike lanes address separation from traffic using flexible delineator posts, planters, parking stops, concrete barriers or rigid bollards, and are shown on the following pages. These forms of separation help to reduce the stress of bicycling, and can be improved over time as funding becomes available.



Interim separated bike lanes on Nebel Street in White Flint can be upgraded over time by new development or county projects



Paint and flexible delineator posts provide separation from traffic for these bike lanes in Washington, DC. Photo: Toole Design Group

INTERIM SEPARATION TYPE

Flexible Delineator Posts

LEVEL OF COMFORT/PROTECTION

- May not offer a high level of comfort to some riders due to lack of continuous separation.
- May be less suitable for young children due to the permeability of the separation.

AESTHETICS

- Less attractive than some other separation types. Multiple options for post types (color, shape, etc.).

CONSIDERATIONS

- Maintenance/ durability issues. May require closer spacing if parking encroachment is an issue.
- Easily accommodate emergency vehicle access.
- Fewest storm water/ drainage implications.

CAPITAL COSTS - Low, easy to install and remove

OPERATING COSTS - Low to medium (depending on frequency of damage).



Parking stops provide separation from traffic for these bike lanes in Washington, DC.

INTERIM SEPARATION TYPE

Parking Stops/ Precast Concrete Surface-Mounted Medians

LEVEL OF COMFORT/PROTECTION

- May not offer a high level of comfort due to limited height.
- Low profile reduces risks of pedal strikes.

AESTHETICS

- Can be less attractive than some other separation types.
- Multiple options (color, pattern, etc.) for parking stop and precast concrete median types.

CONSIDERATIONS

- Require minimal buffer space. Highly durable.
- Can create tripping hazards and access issues when adjacent to on-street parking.
- May need additional vertical objects or on-street parking to increase comfort of bicyclists.
- Low impact on storm water drainage.

CAPITAL COST - Low to medium

OPERATING COST - Low



Parked cars provide separation from traffic for this bike lane in Silver Spring, MD.

INTERIM SEPARATION TYPE

Parked Cars

LEVEL OF COMFORT/PROTECTION

- Moderate comfort due to potential for cars to be parked too close to the bikeway.

AESTHETICS

- Can be less attractive than some other separation types.

CONSIDERATIONS

- Separation from traffic should be at least 3 feet wide.

CAPITAL COST - Low to medium

OPERATING COST - Low



Planters provide separation from traffic for these separated bike lanes in Vancouver, British Columbia, Canada.

INTERIM SEPARATION TYPE

Planter Boxes

LEVEL OF COMFORT/PROTECTION

- High comfort due to heft of planters and consistent wall of separation from traffic.

AESTHETICS

- Provides enhancement to streetscape with plantings. Multiple options for planter choice (size, color, shape, etc.).

CONSIDERATIONS

- Higher long-term maintenance costs (landscaping) than other types of separation.
- May not be appropriate for higher-speed roadways.
- Additional bike lane width required to provide offset from vertical obstruction.
- Lower impact on drainage if placed with spaces between planter boxes.

CAPITAL COST - Low to medium

OPERATING COST - Medium to high



Concrete barriers provide separation from traffic on this bike lane in Vancouver, British Columbia, Canada.

INTERIM SEPARATION TYPE

Concrete Barriers

LEVEL OF COMFORT/PROTECTION

- High level of protection due to consistent wall and height of separation.

AESTHETICS

- Lower aesthetic quality, though can be constructed with small planter area on top or decorative inset panels on sides.
- May require a crash cushion at ends.

CONSIDERATIONS

- Potential drainage and maintenance vehicle access issues.
- Incompatible with on-street parking.
- Additional bike lane width required to provide offset from vertical obstruction.
- Lower impact on drainage if placed with spaces between barriers.

CAPITAL COST - Medium

OPERATING COST - Low

Permanent Separated Bike Lanes

Permanent separated bike lanes create bicycling environments that are appropriate for people of all ages and bicycling abilities. They expand the capacity of the bicycling network by implementing wide bike lanes that enable passing and incorporate more aesthetically pleasing treatments and stormwater management.

Separated Bike Lane Widths

Permanent separated bike lanes will have the following widths:

- One-way separated bike lanes: 6.5 feet at a minimum (8.0 ft preferred), exclusive of shy distances.
- Two-way separated bike lanes: 10 feet at a minimum (11 ft preferred), exclusive of shy distances.

Intersections

Permanent separated bike lanes will reduce conflicts at intersections with protected intersections and mitigate the remaining conflicts.

Separation from Traffic

Permanent separation provides a high level of protection and often has greater potential for placemaking, quality aesthetics and integration with stormwater management. Examples of permanent separation include raised medians and raised separated bike lanes at an intermediate level, and are shown on the following pages. Each of these separation types provides an increasingly higher level of comfort for bicycling, separation from traffic and opportunity for improved aesthetics within the streetscape. Permanent separation can reduce maintenance costs associated with temporary separation and improve durability and bicyclists' safety on higher volume roadways.



Separated bike lanes on Maine Ave in Washington, DC



Raised medians provide separation from traffic for these bike lanes. Photo: Toole Design Group

PERMANENT SEPARATION TYPE

Raised Medians

LEVEL OF COMFORT/PROTECTION

- High level of comfort due to durability of median, potentially enhanced with plantings that provide additional height and sense of separation.

AESTHETICS

- With plantings, can add to streetscape aesthetic.
- Plantings will require additional maintenance.

CONSIDERATIONS

- Passenger unloading and pedestrian pass-through areas needed to accommodate on-street parking.
- Opportunity to incorporate green storm water infrastructure.
- High impact on storm water drainage; must be considered in design.

CAPITAL COST - High

OPERATING COST - Low to high (depending on plantings).



A landscaped buffer will provide separation from traffic on this separated bike lane at an intermediate level between the street and sidewalk in Vancouver, British Columbia, Canada.

PERMANENT SEPARATION TYPE

Raised Lane

LEVEL OF COMFORT/PROTECTION

- High level of comfort due to grade separation from automobiles.
- Adequate separation from pedestrians needed when at sidewalk level to ensure bicyclist and pedestrian comfort.

AESTHETICS

- Choice of pavement types for bike lane, buffers and sidewalk materials can enhance streetscape aesthetic.

CONSIDERATIONS

- Transitions at intersections, driveways and pedestrian crossings require additional consideration.
- Greater flexibility for curb reveal and drainage.
- May necessitate moving utility locations.

CAPITAL COST - High

OPERATING COST - Low

Phasing Separated Bike Lane Implementation

While Montgomery County should strive to implement permanent separated bike lanes, there are many cases where this will not be feasible in the short-term. Interim separated bike lanes can offer substantial benefits over the status quo.

Interim separated bike lanes will be implemented when:

- Project constraints, such as available right-of-way or funding, do not allow implementation of a permanent design in the short term.
- Interim separation will be upgraded in the future by private development or large-scale capital projects.
- There is a need to test design effectiveness over the short term or to quickly respond to significantly increased bicycle ridership, public demand or other issues.

Permanent separated bike lanes will be implemented when:

- Private developers are required to implement frontage improvements or internal road as part of their projects.
- The bikeway will be along a new or reconstructed road that will be constructed by public agencies or private developers.
- The bikeway will be constructed as part of a larger capital road or bicycle project.

Striped Bikeways

The Montgomery County Department of Transportation and the Maryland State Highway Administration install striped bikeways on roads through repaving projects when a lane diet (narrowing lanes) or road diet (removing lanes) is feasible. The Bicycle Master Plan supports striped bikeways where they are recommended in the bikeways section of this plan and on primary residential streets or other non-commercial streets. Striped bikeways are also recommended where the posted speed limit does not exceed 30 mph, where there are no more than three lanes of traffic, where traffic volumes do not exceed 6,000 vehicles per day and in non-commercial areas.

This plan endorses installing temporary striped bikeways as part of street resurfacing projects, where the striped bikeway is extended to the intersection, because they can reduce traffic stress by narrowing the road and providing a designated space for bicycling. Where striped bikeways are temporarily installed, the space can later be repurposed to install a master-planned recommended bikeway or achieve another county purpose.

IMPLEMENTATION MECHANISM

Like other master plans, the bicycling network proposed in the plan is not a capital improvement program. The plan does not require the County to construct all master-planned bikeways, but instead provides options for implementation and network redundancy, so bikeways can be installed as opportunities arise. Montgomery County's bicycling network will be implemented through a number of mechanisms, including:

- Montgomery County Capital Improvements Program
- Montgomery County Planning Board's approval of development
- Public facility projects undertaken by the Montgomery County Department of Transportation, Maryland State Highway Administration, Federal Government and other agencies

Implementation Through Capital Improvements Program

One way that bicycle facilities are implemented in Montgomery County is through the capital improvements program. Montgomery County's capital budget provides the spending authority that county agencies need to implement projects. This six-year program for construction projects and improvements is comprehensively amended on even-numbered years and with less substantial adjustments during odd-numbered years.

The capital budget includes funding for several programs that improve bicycling, described in the programs section of this plan. Major funding programs include stand-alone projects, such as construction of new roads that include bikeways, stand-alone bikeway projects added to existing roads and facility planning projects that enable preliminary engineering of projects which include bikeways.

A typical planning process should include the components below. The first three components are included in most planning studies. This master plan recommends a new, fourth component:

1. **Review of master plan recommendations:** The starting point for any planning study should be to implement the master plan-recommended bikeway along the study corridor.
2. **Determine if space is sufficient to implement a master-planned bikeway:** One of the initial considerations facing designers is whether the master-planned bikeway fits within the existing right-of-way without excessive impacts to the surrounding community. If the master-planned bikeway fits, the project should begin with more detailed design following the master plan recommendation. If the master-planned bikeway does not fit, designers need to consider whether it is feasible to expand the existing right-of-way or repurpose space used within the existing right-of-way to accommodate the master-planned bikeway.
3. **Expand or repurpose the right-of-way:** In determining whether existing space can be repurposed, designers should consider road diets, lane diets and removal of on-street parking. If sufficient space can be repurposed from existing elements in the roadway, the project should begin with more detailed design following the master plan recommendation. As with any transportation project, when removal of on-street parking is under consideration, analysis of the parking needs of local residents, businesses and institutions including an assessment of the adequacy of the remaining or alternative

parking to meet these needs must be considered. If sufficient space within the existing right-of-way cannot be repurposed, additional right-of-way may need to be purchased. If neither option is desirable, designers need to consider alternative interim or permanent design solutions. The relevant Subdivision Staging Policy requirements in effect at the time of implementation must be satisfied with implementation of the master plan-recommended or alternative design solutions.

- 4. Interim solutions for bikeways:** Interim solutions should identify a moderate stress bikeway along the corridor and a low-stress bikeway on a parallel route where possible. Over the long-term, designers should revisit the corridor to determine whether it becomes feasible to implement a low-stress bikeway along the road because additional right-of-way is available, fewer lanes are needed or some other reason.

Extensive public outreach is needed during project implementation as well as early coordination with project stakeholders, such as the Maryland State Highway Administration and the Maryland-National Capital Park and Planning Commission.

Montgomery County Department of Transportation (MCDOT) Transportation Project Development Process

Facility planning for transportation projects, including bikeways, serves as the transition between the master plan and a stand-alone project within the county's Capital Improvements Program (CIP). As of 2018, the Montgomery County Department of Transportation's (MCDOT) Transportation Project Development Process includes several phases to evaluate and preliminarily design a proposed project, provide information for elected officials to determine if the project should be funded, and move forward to final design and construction. All phases include public involvement. These phases include:

- **Capital Funding Process:** Every year, MCDOT submits a capital budget request for the design and construction of current approved capital projects and new capital project expenses. After a project has successfully made it through the Transportation Facility Planning Process, it is ready to be submitted as a "stand alone" capital improvement project.
- **Planning & Analysis (Facility Planning Phase I):** This phase is a rigorous planning level investigation of the proposed improvements leading to a preferred alternative, concept development and a benefit / impacts assessment for the following critical elements: public participation, background data, purpose and need, travel demand forecasting, conceptual alignments and typical sections, preliminary impacts and a project summary report.
- **Preliminary Design and Engineering (Facility Planning Phase II & Final Design):** This phase begins the 35 percent preliminary engineering design work for the project while Final Design takes a project to full 100 percent design. Upon completion of 35 percent design and when the project is funded in the Capital Improvements Program (CIP), the Division of Transportation Engineering can proceed with final design of the project. The length of time necessary to perform design varies depending on the size and complexity of the project. Major tasks of Phase II include ongoing public participation, topographic survey, horizontal and vertical alignments, right-of-way / easements needed, environmental impacts, construction sequence and construction costs. At the completion of Phase II, the County Executive and County Council review the project to determine if the project merits consideration in the CIP as a funded stand-alone project.
- **Right-of-Way, Utilities and Permitting:** The County must apply for and obtain permits from several agencies before construction can begin. As the design work is completed and the alignments and profile of the project are finalized, all necessary right-of-way is acquired for the project.

- **Procurement and Construction:** When the plans and design for a project are completed, it is ready to be bid out for construction. During construction, the Transportation Construction Section supervises and inspects the Contractor's work to ensure the project is being constructed to Montgomery County's standards for design and quality, while minimizing the inconvenience to the public/community.

Implementation Through Development Approvals

Like many jurisdictions, Montgomery County supplements its capital projects by requiring the construction of bikeways through the development approval process. Developers are required to construct bicycle facilities within and along the frontage of their projects, as required by applicable master plans and local law. This private construction can result in substantial contributions to the bicycling network, such as long segments of on-road bikeways adjacent to larger-scale development projects. Other advantages to requiring developers to implement bicycle network improvements as part of their development projects include:

1. Reducing costs for Montgomery County by requiring construction by the private sector.
2. Encouraging the construction of bicycle facilities when adjoining properties that have frontage along the same master-plan bikeway redevelop.
3. Reducing future impacts to the community resulting from separate construction projects.
4. Avoiding the difficulty of constructing a bikeway in the public right-of-way, where a property owner perceives the space to be privately owned.

For smaller development projects, constructing incremental bicycling improvements at the time of development is desirable as long as it does not result in unsafe conditions or severe environmental impacts. In cases where the Planning Department and MCDOT staff determine that the project is unsafe, the developer must pay a *pro rata* share of the proposed bikeway or protected intersections construction costs to an appropriate capital improvements project. To determine the amount of the contribution, the developer must prepare a concept plan (30 percent engineering design / horizontal alignment) for the proposed bikeway or protected intersection for approval by MCDOT on county roads and MDOT / SHA on state roads.⁹

In addition, where staff determines that construction of a bikeway or protected intersection at the time of development is not desirable, the developer must facilitate future implementation of the bikeway or protected intersection by dedicating land or establishing other necessary easements to accommodate the future bikeway or protected intersection and ensuring that utilities, stormwater management facilities, streetscape improvements, landscaping and other features do not conflict with the future implementation of the permanent bikeway. For on-road striped bikeways, the developer must also construct shoulders that will be delineated with pavement markings. **If the minimum right-of-way recommended in a master plan is insufficient to accommodate the bicycle improvement, additional dedication or easements will be required to implement the bicycle improvement.** The small area infrastructure plans, described above, will help facilitate this process and limit conflicts between proposed bicycle facilities and new development.

⁹ The Montgomery County Department of Transportation and the Maryland State Highway Administration make the final decision in the design and implementation of bikeways through the development review process and capital improvements program.

The Bicycle Master Plan recommends many types of bicycle facilities throughout Montgomery County (see Appendix B). Where the plan recommends the following bikeways within a proposed private development or along a development's frontage on a public-right-of-way, the development must conform to the following standards, as applicable.

Trails

- Construct all trails internal to the project.
- Construct all trails along the project's right-of-way frontage.

Separated Bikeways

- Construct all separated bikeways (separated bike lanes and sidepaths) internal to the project.
- Construct all sidepaths along the project's right-of-way frontage.
- Upgrade all existing, interim separated bike lanes to permanent separated bike lanes, as discussed in the Bikeways Design Standards section of this plan.
- Construct new permanent separated bike lanes along the project's right-of-way frontage where there are logical end points for the bikeway, such as intersections, intersecting bikeways, pedestrian connections or other locations to be determined by the Montgomery County Department of Transportation.
- Lay the groundwork for future implementation (see sidebar below) of separated bike lanes along the project's right-of-way frontage where there are not logical end points for the bikeway, as determined by the Montgomery County Planning Board. In this case, the developer must also contribute the difference in cost between laying the groundwork and full implementation of the bikeway to the Montgomery County Department of Transportation for improvements to the local bikeway network.

Striped Bikeways

- Construct all bikeways internal to the project.
- Widen pavement to provide space for striped bikeways.
- Construct new striped bikeways along the project's right-of-way frontage where there are logical termini for the bikeway, such as intersections, intersecting bikeways, pedestrian connections or other locations to be determined by the Montgomery County Department of Transportation.
- Lay the groundwork for future implementation (see sidebar below) of striped bikeways along the project's right-of-way frontage where there are not logical termini for the bikeway, as determined by the Montgomery County Department of Transportation.

Bikeable Shoulders

- Construct all bikeable shoulders along the project's right-of-way frontage.

Shared Roads

- Construct all bikeways internal to the project.
- Construct all bikeways along the project's right-of-way frontage in consultation with the Montgomery County Department of Transportation.

Protected Intersections

- Dedicate right-of-way and implement protected intersection improvements at all portions of the intersection on the project's right-of-way frontage where at least one street is recommended to have a sidepath, separated bike lane, buffered bike lane or conventional bike lane.

Payments In Lieu of Constructing Bikeway Implementation

While the Bicycle Master Plan strongly recommends using the development approval approach discussed in the “Implementation through Development Approvals” section of the plan when determining what bikeways developers are required to construct as part of their projects, there will be instances, as described in the sidebar below, where the Planning Board determines that a development project, on a case-by-case basis, may not be required to follow this process. In those instances, the developer is required to make a financial contribution in lieu of constructing the sidewalk and / or bikeway to support the Planning Board’s finding of safe, adequate and efficient site access and circulation.

Laying the Groundwork for Future Implementation of Bikeways

The Montgomery County Planning Department and Department of Transportation may determine that it is not desirable to require a developer to fully implement a master-planned bikeway or protected intersection on the property’s right-of-way frontage because there are no logical end points to do so. In this case the developer will be required to enable the future implementation of the bikeway or protected intersection by dedicating land to the future bikeway or establishing easements where the future bikeway or protected intersection will go. In addition, the developer will ensure utilities, streetscape improvements and landscaping do not conflict with the future construction of the bikeway or protected intersection. Utilities and major streetscape elements, such as trees, will be located in such a way as to avoid the need for removal and reconstruction when the bicycle facility is implemented. For striped bikeways, this preparation includes paving shoulders that will be later marked with bike lanes. The prioritized small area infrastructure plans described above will help facilitate this process and limit conflicts between proposed bicycle facilities and new development.

Additional Requirements

A countywide plan such as the Bicycle Master Plan cannot anticipate all opportunities to implement bikeways that might arise. To ensure adequate bicycle facilities throughout the county, all developers must conform to the following standards:

- Developers with projects on non-master planned streets must implement the general bikeway application on page 66.
- When a development project has frontage on a street paralleling a major highway or arterial road and there is a gap in the street grid parallel to the major highway or arterial road, the developer must extend the street grid to the extent possible.
- Developers constructing dead-end streets must link these streets with trails to the extent possible.
- The sidepath and separated bike lane recommendations in this plan often recommend the side of the road where the bikeway is envisioned and whether separated bike lanes are envisioned to be one-way or two-way. For those bikeways that are listed as “Side TBD” in the bikeway table, the side of the road and the bikeway configuration will be determined by the Montgomery County Department of Transportation and Planning Department staff during a small area sketch plan study, a facility planning study or the development review process, whichever comes first.

Implementation Through Public Facility Projects

While the capital improvements program and the development approval process are the major mechanisms for implementing bikeways, other county projects offer the ability to realize these projects. Schools, libraries, recreation centers and other public facilities are important destinations that can benefit from and contribute to bicycling in Montgomery County. While it is preferable that master-planned bikeways are implemented as part of these county projects, at a minimum, the right-of-way for the bikeway must be provided to accommodate future improvements to infrastructure, streetscapes and bike facilities within the dedicated space.

All county public facility projects must ensure that utilities, streetscape improvements and landscaping do not conflict with the future implementation of the bikeway network. As with development approvals, utilities and major streetscape elements, such as trees, must be located in such a way as to avoid the need for removal and reconstruction when a bicycle facility is later implemented.

Public facility projects must also consider how people access and circulate on bicycles within the site. This accommodation not only includes the provision of very low stress bikeways that are appropriate for people of all ages and bicycling abilities, but also secure bicycle storage for people using the public facility.

Portions of master-planned Bus Rapid Transit (BRT) corridors are highly constrained, potentially limiting the ability to implement bikeways in the initial phase of construction. In these locations, the provision of appropriate transit and pedestrian infrastructure is the first priority. However, BRT is expected to promote redevelopment in its corridors and is a staging requirement for new development in master plan areas such as White Flint and the Great Seneca Science Corridor. Bikeways in these constrained portions not built initially to their master-planned dimensions would ultimately be built to these dimensions when redevelopment occurs through the development approval process described above or through separate, stand-alone capital projects.

IMPLEMENTING SEPARATED BIKE LANES IN CONSTRAINED CORRIDORS

In much of Montgomery County, street right-of-way is limited and there are often competing demands on using the available space. For this reason, building the county's planned network of separated bike lanes will require tough choices and trade-offs along the way. Guidance on designing separated bike lanes in constrained corridors is needed because in most cases, limited rights-of-way mean that installing a separated bike lane will require narrowing or reconfiguring an existing element of the streetscape, be it a travel lane, a street buffer or another element. While each element has unique considerations that inform its importance and design along a particular corridor, the interplay between streetscape elements can change the utility and effectiveness of the separated bike lane.

A context-sensitive evaluation of each location is required to determine the priority of streetscape elements without compromising any user's safety or inhibiting the street's function within the multimodal transportation network. Developing general guidance on priority streetscape elements based on the local context of the street under consideration will save county planners time in performing each individual context-sensitive evaluation and help ensure consistent application.

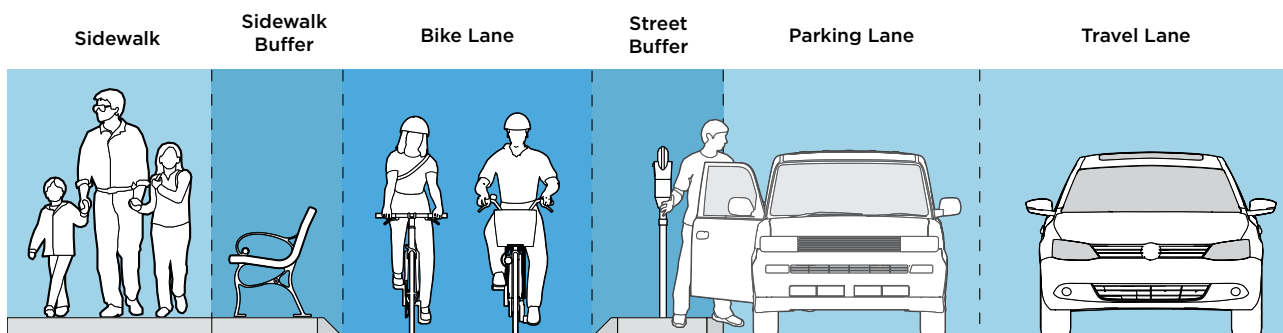
Above all, the following guidance is shaped by the central consideration that the installation of a separated bike lane should not detract from the safety and comfort of those walking. Fortunately, if designed appropriately, separated bike lanes can enhance the walking experience by providing greater separation between bicyclists and pedestrians, and pedestrians and motor vehicles, improving the aesthetic of the overall streetscape (if street trees and beautification are part of the design) and calming traffic (if lane narrowing or curb radii improvements are part of the design).

Designing Separated Bike Lanes In Constrained Corridors

Designing a separated bike lane in a constrained corridor involves reallocating space from one or more streetscape zones and installing a bicycle facility that is appropriate in type and width to the corridor. The following section discusses where the space can be reallocated to make room for the appropriate bicycle facility. This guidance is flexible, as specific roadway conditions may result in a reordering of these priorities.

Starting at the building faces and moving toward the street centerline, the zones are as described below.

- **Sidewalk:** The area designated for pedestrian travel.
- **Sidewalk Buffer:** The area located between the separated bike lane and the sidewalk. Its presence helps to discourage encroachment between bicyclists and pedestrians.
- **Separated Bike Lane:** The bicyclist operating space located between the street buffer and sidewalk buffer.
- **Street Buffer:** The area situated between the separated bike lane and motor vehicle traffic. In general, the faster the speed of traffic, the wider the street buffer needs to be in order to create a low-stress bicycling experience.
- **Parking Lane:** Paved areas adjacent to the street curb where motor vehicles can be stored when not in use.
- **Travel Lane:** Paved area of a street that carries automobile traffic through a corridor.



Zones of a separated bike lane street

Narrowing Travel Lanes: When looking for space to install a separated bike lane, narrowing the vehicular travel lanes should be considered first, regardless of the corridor's context. Montgomery County Code specifies the maximum travel lane widths in urban areas and many streets have lanes that are wider than the standard minimum. Specifically, Section 49-32 of the Montgomery County Code sets the maximum lane width as 10 feet for travel lanes in urban areas, although the outside travel lane should be no wider than 11 feet, including the gutter pan or when adjacent to on-street parking. This legislation is supported by the American Association of State Highway and Transportation Officials (AASHTO) Green Book, which specifies 10-foot travel lanes on roadways with speed limits below 45 mph.

Research indicates that 10-11-foot travel lanes on urban and suburban arterials do not have a negative effect on safety or vehicular capacity.¹⁰ Narrowing roadways has a traffic calming effect that makes traffic conditions safer for all users, including drivers. The width available for a separated bike lane resulting from the lane diet depends on how wide and how many travel lanes currently exist. As an example, on a four-lane road with 12-foot-wide lanes, narrowing the lanes to 10- and 11-foot widths provides 6 feet that could be reallocated for a separated bike lane.

Eliminating On-Street Parking: Depending on parking lane width, removing one on-street parking lane can provide 7 or more feet for separated bike lanes. On-street parking should only be removed after analysis determines that local parking needs are adequately served by remaining or alternative parking.

Eliminating Travel Lanes: If a road has more travel lanes than necessary based on traffic volume, the lanes can be removed to provide space for separated bike lanes. There are other instances when travel lane removal should be considered due to the safety or operational benefits of fewer lanes. However, the relevant Subdivision Staging Policy requirements in effect at the time of implementation must be satisfied.

Narrowing or Eliminating the Sidewalk Buffer: The space separating the sidewalk from the separated bike lane, which may hold landscaping or street furniture, can be minimized or removed to provide space for the bicycle facility.

Narrowing the Street Buffer: In general, the recommended street buffer width is 6 feet. In constrained conditions, street buffers may be narrowed to 2 feet.

Narrowing Separated Bike Lanes to Minimum Widths: While the ideal width for separated bike lanes is a function of expected peak hour use, in constrained circumstances, there are minimum recommended widths. For one-way separated bike lanes adjacent to curbs, lanes should be at least 5 feet wide. A width of 4 feet is allowed for short sections if vertical separation, such as curbs or planters, is not directly adjacent to the bike lane.

For a two-way separated bike lane, a minimum width of 8 feet is recommended. On constrained corridors with steep grades, wider bike lanes may be provided in the uphill roadway direction to enable faster moving bicyclists to pass slower ones. See Appendix B for more information about separated bike lanes widths.

Narrowing the Sidewalk: If the sidewalk is wider than necessary to accommodate current and planned pedestrian demand, it can be narrowed to provide space for a separated bike lane. Minimum sidewalk width in an urban context is 5 feet. As described below, this minimum sidewalk width is almost always the last resort, as bicycle facilities should enhance and not compromise the quality of the pedestrian environment.

¹⁰ Potts, Ingird B., Douglas W. Harwood, and Karen R. Richard. "Relationship of Lane Width to Safety on Urban and Suburban Arterials." Transportation Research Record, Issues 2023 (2007): 63-82.

Defining Street Types

This section presents four different street types and recommends a hierarchy that can help planners consider where to repurpose space for separated bike lanes in a constrained urban environment. When identifying space for separated bike lanes on these corridors, planners should use the table below.

Traffic Priority: These streets carry significant traffic volumes and are major regional travel arteries. Roads that fall into this street type include Georgia Avenue and Colesville Road in Montgomery County.

Sidewalk Café Priority: These are streets with continuous ground-floor retail where outdoor seating and the pedestrian environment are particularly important. One example of this type of street is Woodmont Avenue between Elm Street and Bethesda Avenue in Montgomery County. On these streets, sidewalks and sidewalk buffers should not be narrowed. These streets require ample pedestrian space as an essential part of their public realm, facilitating commerce and social exchange.

On-Street Parking Priority: These streets have a high demand for on-street parking and limited or no off-street short-term parking options located within one or two blocks. One example of this type of street is Cordell Avenue from Old Georgetown Road to Wisconsin Avenue in Montgomery County. On these streets, on-street parking should remain part of the street design. Land uses on these streets require on-street parking to be successful.

Bikeway Priority: These are streets identified as priorities in the Bicycle Master Plan. They connect major destinations where no low-stress bikeway alternatives currently exist within three blocks. An example street is Bradley Boulevard between Wisconsin Avenue and Glenbrook Road in Montgomery County.

	TRAFFIC PRIORITY	SIDEWALK CAFÉ PRIORITY	ON-STREET PARKING PRIORITY	BIKEWAY PRIORITY
Narrowing travel lanes to minimum widths	1	1	1	1
Eliminating on-street parking	2(b)	3(e)	N/A	2
Narrowing or eliminating the sidewalk buffer	3	N/A	3	4
Narrowing the street buffer	4(c)	4	4	5
Narrowing the separated bike lane	5	5	5	6
Narrowing the sidewalk (a)	6	N/A	6	7
Eliminating travel lanes	7(d)	2	2	3

Notes

(a) Narrowing the sidewalk is only appropriate in areas where current or projected pedestrian volumes are low.

(b) Vehicles searching for parking and entering or exiting parking spaces slow through traffic and create vehicular conflicts. The main function of these streets is not affected by parking removal.

(c) On traffic priority streets, higher traffic speeds and volumes make the street buffer very important for bicyclist comfort, especially if there is no on-street parking.

(d) This action may only be considered as a last resort because lane removal may create operational issues for the street.

(e) This action may have an adverse effect on retail businesses, but nearby off-street parking may be able to accommodate the short- and long-term parking need.



Vancouver, British Columbia

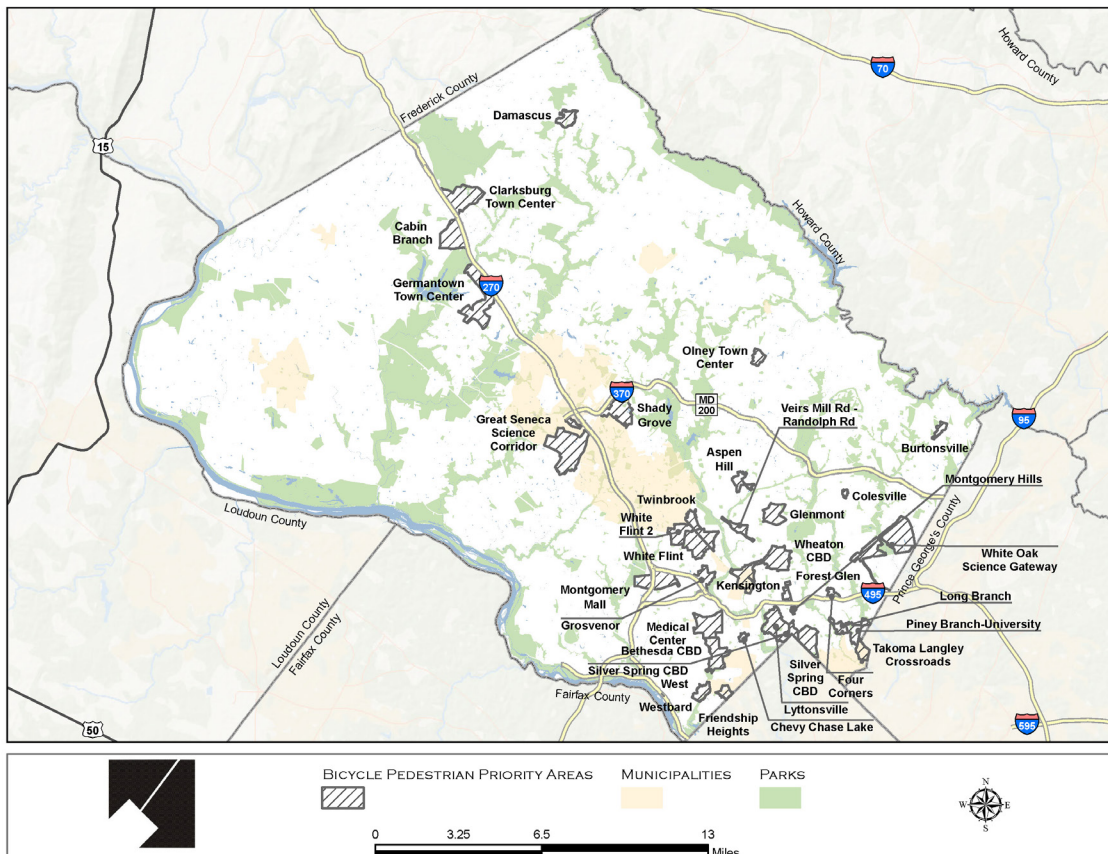
PRIORITIZATION

The network of bikeways and bicycle parking stations recommended in the Bicycle Master Plan is extensive but as previously discussed is not likely to be fully constructed, partly because of budget limitations and partly because the plan identifies redundant options to ensure that the goal of connectivity can be achieved. It is likely to be only partially completed during the life of the plan through County capital projects, state highway projects and private development. Such a large network is proposed so that opportunities to implement the preferred bicycling network are not lost when unforeseen circumstances arise. However, it is important to identify bikeway network priorities because funding for implementation is limited.

The approach to prioritizing the bicycling network is based on reaching the targets established for each metric in the Goals, Objectives, Metrics and Targets section of this plan. The priorities focus on increasing bicycling in the county as quickly as possible, by focusing initial efforts on constructing networks of bikeways in places that the Montgomery County Council has designated as Bicycle and Pedestrian Priority Areas (BiPPA)¹¹ and completing connections between major activity centers. Also prioritized are missing gaps in the existing low-stress bicycling network and low-cost bikeways, such as neighborhood greenways, which will funnel bicyclists to the BiPPAs.

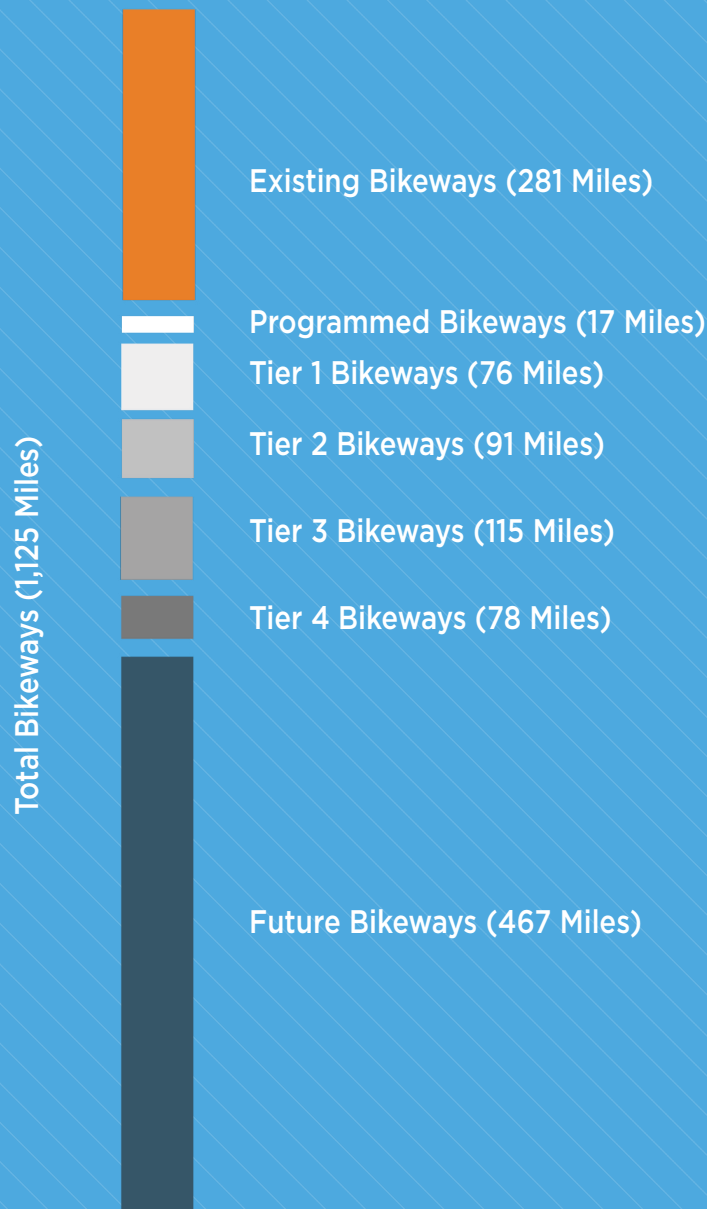
The bikeway and bicycle parking station prioritization in this plan are guidelines based on the best available information at the time the plan was approved by the Montgomery County Council. This prioritization should be reassessed every few years based on available resources, lessons learned and to ensure consistency with the goals of the plan and to ensure continuity of the bicycling network. In addition, the implementation of bikeways and bicycle parking stations that are identified as lower priorities in this plan should be accelerated as opportunities to implement them arise, such as redevelopment projects and state and local capital projects.

Bicycle and Pedestrian Priority Areas



Prioritization of Bikeways

The figure below shows how the proposed bicycle network would be built out. Currently about 281 miles of the recommended bikeway network exists. An additional 377 miles are recommended as priorities for construction in one of four tiers. Approximately 42 percent of the recommended bikeway network is recommended for implementation as opportunities arise rather than as a set of stand-alone projects. For example, these improvements can be incorporated in private development, and state and local road construction, or spot safety improvements where bikeways can be implemented as part of another project.



To support implementation of the Tier 1 bikeway projects, it is recommended that Montgomery County program additional funds for the Bicycle and Pedestrian Priority Areas program and create a new Neighborhood Greenway program. Even with additional funding, several Tier 1 projects, such as Rockville Pike in White Flint, will require substantial dedication from development approvals before they can be implemented.

It is envisioned that most separated bike lane projects will be initially implemented with interim construction (see pages 129 to 134), supplemented (and/or upgraded) by permanent separated bike lane construction (pages 135 to 137) as part of stand-alone facility planning projects by the Montgomery County Department of Transportation and development approvals.

Programmed Bikeways

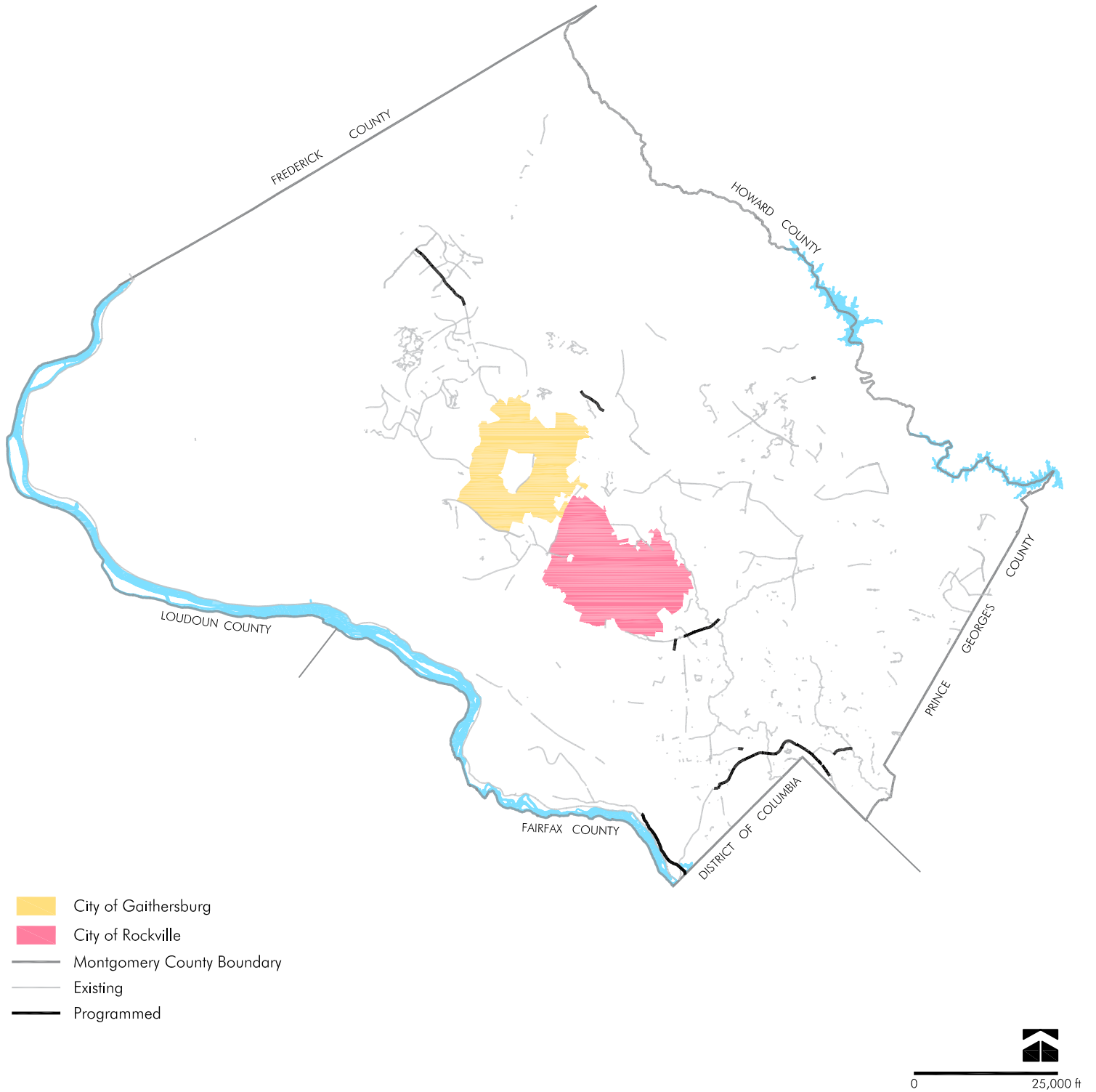
Programmed bikeways include those that are completely or partially funded for construction in the county's six-year capital improvements budget and are components of the recommended low-stress bicycling network. The list of programmed bikeways shown below are recommended in existing master plans and are largely funded to be completed within 6 years. A full list of funded projects is available at montgomerycountymd.gov/OMB

17 Miles



Total = 298 Miles

STREET	FROM	TO	BIKEWAY	POLICY AREA	LENGTH (MI)
Capital Crescent Trail (Surface Route)	Woodmont Ave	Elm Street Park	Separated Bike Lanes / Sidepath	Bethesda CBD	0.3
Capital Crescent Trail Breezeway	Elm St Park	Silver Spring Transit Center	Off-Street Trail	Multiple	4.7
Frederick Rd	Stringtown Rd	North Germantown Greenway Trail	Sidepath	Clarksburg	2.5
Gold Mine Rd	James Creek Ct	Chadlee Mill Rd	Sidepath	Olney	0.1
MacArthur Blvd	Goldsboro Rd	District of Columbia	Sidepath and Bikeable Shoulders	Bethesda/Chevy Chase (West)	5.1
Metropolitan Branch Trail Breezeway	Silver Spring Transit Center	King St	Off-Street Trail	Silver Spring CBD	0.5
Potomac to Veirs Mill Road Breezeway	Randolph Rd	Veirs Mill Rd	Sidepath	Multiple	1.4
Silver Spring Green Trail	Cedar St	Sligo Creek Pkwy	Sidepath	Silver Spring/Takoma Park (East)	0.7
Snouffer School Rd	Centerway Rd	Sweet Autumn Dr	Sidepath	Montgomery Village/Airpark	1.0
White Flint to Rock Spring Breezeway	Montrose Pkwy	Old Georgetown Rd	Separated Bike Lanes	White Flint	0.1
White Flint to Rock Spring Breezeway	Towne Rd	Kennedy Shriver Aquatic Center Drwy	Sidepath	White Flint	0.1



Tier 1 Bikeway Projects

Tier 1 projects are recommended to be substantially completed in the near term following approval of the Bicycle Master Plan. These projects include:

- Bikeways located in seven Bicycle and Pedestrian Priority Areas.
- Neighborhood greenways feeding into these BiPPA areas.
- Bikeways with high demand that are included in the capital improvements program.
- Other county priorities.

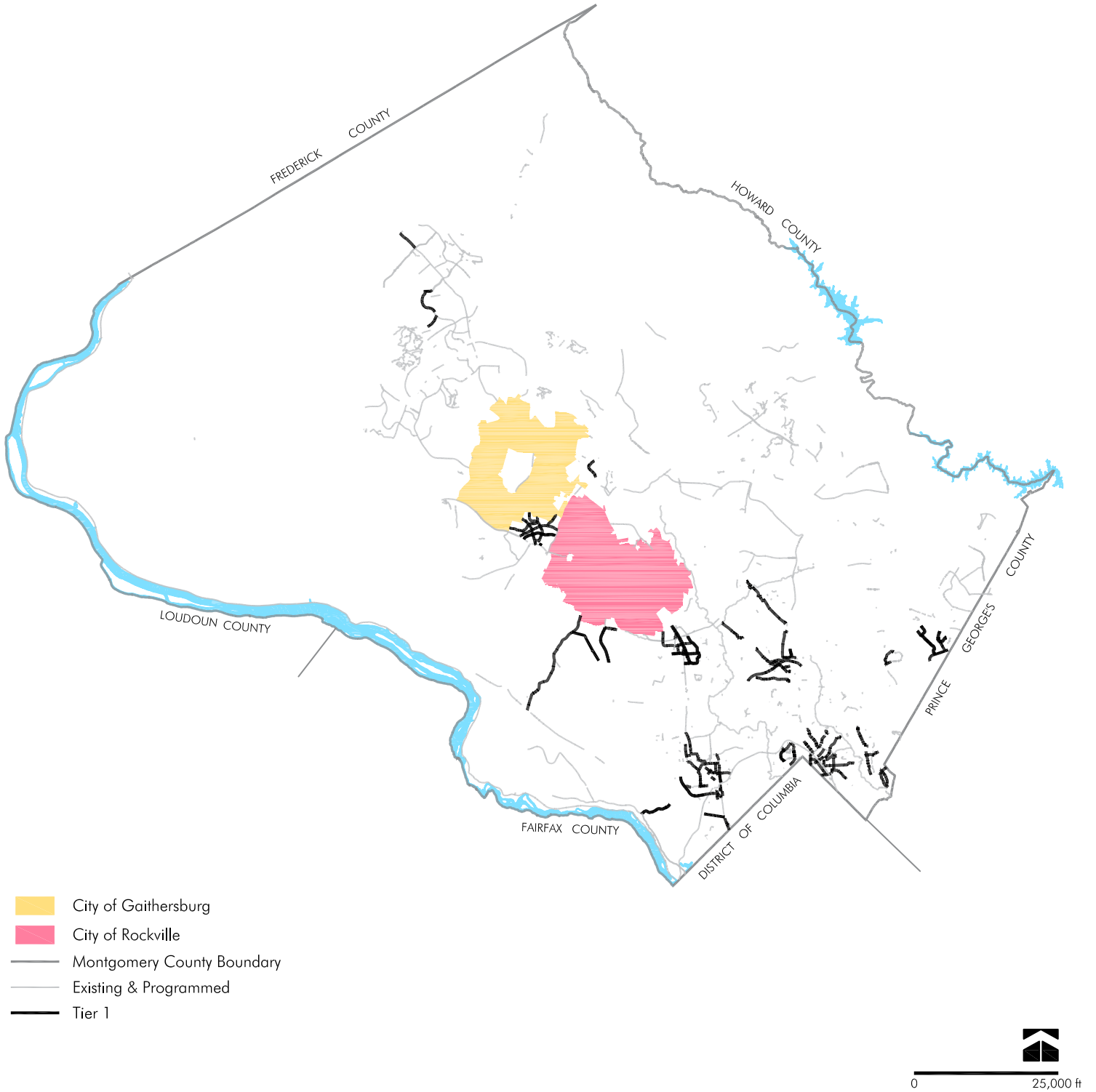
Projects that should be implemented immediately in Tier 1 are shown below and include those that are likely to have the highest demand due to their location around Metro stations and high-density areas. All other Tier 1 bikeways are shown on the following pages.

76 Miles



Total = 374 Miles

STREET	FROM	TO	BIKEWAY	LENGTH (MI)
2nd Ave / Wayne Ave	Spring St	Georgia Ave	Separated Bike Lanes	0.5
Arlington Rd	Old Georgetown Rd	Bradley Blvd	Separated Bike Lanes	0.7
Bethesda Trolley Trail	Battery Ln	Rugby Ave	Off-Street Trail	0.1
Broadburch Dr	Tech Rd	Cherry Hill Rd	Separated Bike Lanes	0.7
Capital Crescent Trail Breezeway	Woodmont Ave	Elm Street Park	Off-Street Trail	0.2
Cherry Hill Rd	Prosperity Dr	Prince George's County	Separated Bike Lanes	1.3
City of Rockville to Friendship Heights Breezeway	Rockville Pike	Woodglen Dr	Separated Bike Lanes	0.1
	NIH Property Line	Battery Ln	Off-Street Trail	0.1
	Battery Ln	Old Georgetown Rd	Separated Bike Lanes	0.5
	Old Georgetown Rd	Strathmore St	Separated Bike Lanes	0.5
Edgemoor Ln	Arlington Rd	Bethesda Metrorail Station	Separated Bike Lanes	0.2
Edgemoor Ln	Exeter Rd	Arlington Rd	Neighborhood Greenway	0.2
Fenton St	Ellsworth Dr	Wayne Ave	Separated Bike Lanes	0.1
Fenton St	Wayne Ave	King St	Separated Bike Lanes	0.6
Friendship Blvd	Willard Ave	District of Columbia	Separated Bike Lanes	0.2
Glenmont to Silver Spring Breezeway	Blueridge Ave	University Blvd	Separated Bike Lanes	0.2
	Cameron St	Ellsworth Dr	Separated Bike Lanes	0.2
	Planning Dept Parking Lot	Cameron St	Separated Bike Lanes	0.2
	University Blvd	Windham Ln	Separated Bike Lanes	0.7
Grandview Ave	Blueridge Ave	University Blvd	Separated Bike Lanes	0.1
Grandview Ave	University Blvd	Reedie Dr	Separated Bike Lanes	0.2
Life Sciences Center Loop	Key West Ave	Great Seneca Hwy	Separated Bike Lanes	1.1
Life Sciences Center Loop	Great Seneca Hwy	Great Seneca Hwy	Separated Bike Lanes	0.5
Marinelli Rd	Executive Blvd	Woodglen Dr	Separated Bike Lanes	0.2
Marinelli Rd	Rockville Pike	Nebel St	Separated Bike Lanes	0.4
Medical Center Dr Ext (Outer Side)	Great Seneca Hwy	Key West Ave	Separated Bike Lanes	0.5
Montgomery Ave	Wisconsin Ave	East West Hwy	Separated Bike Lanes	0.4
Montgomery Ln	Woodmont Ave	Wisconsin Ave	Separated Bike Lanes	0.1
Veirs Mill Road to White Oak Brzwy	Columbia Pike	Prosperity Dr	Separated Bike Lanes	0.1
Woodmont Ave	Strathmore St	Wisconsin Ave	Separated Bike Lanes	0.1



Tier 1 Bikeways

STREET	FROM	TO	BIKEWAY	POLICY AREA	LENGTH (MI)
13th St / Burlington Ave	District of Columbia	Fenton St	Separated Bike Lanes	Silver Spring CBD	0.3
16th St	Spring St	District of Columbia	Separated Bike Lanes	Silver Spring CBD	0.3
2nd Ave / Wayne Ave	Spring St	Georgia Ave	Separated Bike Lanes	Silver Spring CBD	0.5
Anne St	University Blvd	Glenside Dr	Neighborhood Greenway	Takoma/Langley	0.3
Arlington Rd	Old Georgetown Rd	Bradley Blvd	Separated Bike Lanes	Bethesda CBD	0.7
Battery Ln / Exeter Rd	Old Georgetown Rd	Elm St	Neighborhood Greenway	Bethesda/Chevy Chase (East)	0.6
Battery Ln	Old Georgetown Rd	Wisconsin Ave	Separated Bike Lanes	Bethesda CBD	0.3
Belward Campus Dr (North Side)	Muddy Branch Rd	Great Seneca Hwy	Separated Bike Lanes	R&D Village	0.8
Bethesda - Somerset Neighborhood Greenway	Bradley Blvd	Norwood Rd	Off-Street Trail / Neighborhood Connector	Bethesda CBD, Bethesda / Chevy Chase (East)	0.2
Bethesda Trolley Trail	Battery Ln	Rugby Ave	Off-Street Trail	Bethesda CBD	0.1
Blackwell Rd	Darnestown Rd	Shady Grove Rd	Separated Bike Lanes	R&D Village	1.1
Blueridge Ave	Grandview Ave	Taber St	Separated Bike Lanes / Neighborhood Greenway	Wheaton CBD	0.5
Bradley Blvd	Wilson Ln	Fairfax Rd	Sidepath and Conventional Bike Lanes	Bethesda/Chevy Chase (East)	2.3
Bradley Blvd	Fairfax Rd	Strathmore St	Separated Bike Lanes	Bethesda CBD	0.5
Broadbirch Dr	Tech Rd	Cherry Hill Rd	Separated Bike Lanes	White Oak	0.7
Broschart Rd (East Side)	Key West Ave	Darnestown Rd	Separated Bike Lanes	R&D Village	0.5
Burtonsville to Silver Spring Breezeway	Stewart Ln	Lockwood Dr	Separated Bike Lanes / Sidepath	White Oak	0.5
Burtonsville to Silver Spring Breezeway	White Oak Shopping Center Drwy	New Hampshire Ave	Sidepath	White Oak	0.1
Burtonsville to Silver Spring Breezeway	Sligo Creek Trail	Spring St	Neighborhood Greenway	Silver Spring/Takoma Park (East)	0.7
Burtonsville to Silver Spring Breezeway	Spring St	Fenton St	Separated Bike Lanes	Silver Spring CBD	0.2
Cameron St	2nd Ave	Spring St	Separated Bike Lanes	Silver Spring CBD	0.3
Capital Crescent Trail Breezeway	Woodmont Ave	Elm Street Park	Off-Street Trail	Bethesda CBD	0.2

STREET	FROM	TO	BIKEWAY	POLICY AREA	LENGTH (MI)
Capital Crescent Trail Breezeway Lighting	Elm Street Park	Silver Spring Transit Center	Off-Street Trail	Bethesda CBD	N/A
Capital Crescent Trail to Bradley Blvd Neighborhood Greenway	Elm St	Bradley Ln	Neighborhood Greenway	Bethesda/Chevy Chase (East)	0.4
Cheltenham Dr	Wisconsin Ave	Tilbury St	Separated Bike Lanes	Bethesda CBD	0.1
Cherry Hill Rd	Prosperity Dr	Prince George's County	Separated Bike Lanes	White Oak	1.3
City of Rockville to Friendship Heights Breezeway	City of Rockville	Marinelli Rd	Separated Bike Lanes	North Bethesda / Twinbrook, White Flint	0.9
City of Rockville to Friendship Heights Breezeway	Rockville Pike	Woodglen Dr	Separated Bike Lanes	White Flint	0.1
City of Rockville to Friendship Heights Breezeway	Marinelli Rd	Edson Ln	Separated Bike Lanes	White Flint	0.2
City of Rockville to Friendship Heights Breezeway	Charles St	W Cedar Ln	Sidepath	Bethesda/Chevy Chase (East)	0.2
City of Rockville to Friendship Heights Breezeway	W Cedar Ln	South of Lincoln St	Sidepath	Bethesda/Chevy Chase (East)	0.5
City of Rockville to Friendship Heights Breezeway	Old Georgetown Rd	NIH Property Line	Off-Street Trail	Bethesda/Chevy Chase (East)	0.7
City of Rockville to Friendship Heights Breezeway	NIH Property Line	Battery Ln	Off-Street Trail	Bethesda CBD	0.1
City of Rockville to Friendship Heights Breezeway	Bethesda Trolley Trail	Woodmont Ave	Separated Bike Lanes	Bethesda CBD	0.2
City of Rockville to Friendship Heights Breezeway	Battery Ln	Old Georgetown Rd	Separated Bike Lanes	Bethesda CBD	0.5
City of Rockville to Friendship Heights Breezeway	Old Georgetown Rd	Strathmore St	Separated Bike Lanes	Bethesda CBD	0.5
City of Rockville to Friendship Heights Breezeway	Woodmont Ave	Bradley Blvd	Priority Shared Lane Markings	Bethesda CBD	0.1
City of Rockville to Friendship Heights Breezeway	Strathmore St	Wisconsin Ave	Separated Bike Lanes	Bethesda CBD	0.1
City of Rockville to Friendship Heights Breezeway	Bradley Blvd	Nottingham Dr	Sidepath	Bethesda/Chevy Chase (East)	0.1
City of Rockville to Friendship Heights Breezeway	Oliver St	District of Columbia	Separated Bike Lanes	Friendship Heights	0.4
City of Rockville to Wheaton Breezeway	College View Dr	Georgia Ave	Separated Bike Lanes	Wheaton CBD	0.6
Clarksburg to City of Gaithersburg Breezeway	Little Seneca Pkwy	Waters Discovery Ln	Sidepath	Clarksburg, Germantown East	1.0
Colesville Rd (North Side)	East West Hwy	Wayne Ave	Separated Bike Lanes	Silver Spring CBD	0.2
Colesville Rd (South Side)	16th St	Georgia Ave	Separated Bike Lanes / Sidepath	Silver Spring CBD	0.4
Colesville Rd (US 29) West Neighborhood Greenway	Woodland Dr	Sligo Creek Trail Connector	Neighborhood Greenway	Silver Spring/Takoma Park (West)	0.6
Cornish Rd / Elm St	Bradley Blvd	Arlington Rd	Neighborhood Greenway	Bethesda/Chevy Chase (East), Bethesda CBD	0.5

STREET	FROM	TO	BIKEWAY	POLICY AREA	LENGTH (MI)
Crabbs Branch Way (East Side)	Northern Terminus	Shady Grove Rd	Sidepath	Derwood	0.4
Discoverly Dr (North / West)	Great Seneca Hwy	City of Gaithersburg	Separated Bike Lanes	R&D Village	0.5
Diamondback Dr (East Side)	City of Gaithersburg	Discoverly Dr	Sidepath	R&D Village	0.5
Diamondback Dr (East Side)	Discoverly Dr	Key West Ave	Separated Bike Lanes	R&D Village	0.2
Dixon Ave	Wayne Ave	Georgia Ave	Separated Bike Lanes	Silver Spring CBD	0.3
Dorset Ave	Little Falls Pkwy	Wisconsin Ave	Neighborhood Greenway	Bethesda/Chevy Chase (East)	0.7
Douglas Ave / McComas Ave / Windham Ln	St Paul St	Georgia Ave	Neighborhood Greenway	Kensington/Wheaton, Wheaton CBD	1.3
East Ave / Upton Dr	Upton Dr	University Blvd	Neighborhood Greenway	Wheaton CBD, Kensington / Wheaton	0.3
East West Hwy	16th St	Colesville Rd	Separated Bike Lanes	Silver Spring CBD	0.3
East West Hwy	Colesville Rd	Georgia Ave	Separated Bike Lanes	Silver Spring CBD	0.5
Edgemoor Ln	Exeter Rd	Arlington Rd	Neighborhood Greenway	Bethesda CBD, Bethesda/Chevy Chase (East)	0.2
Edgemoor Ln	Arlington Rd	Bethesda Metrorail Station	Separated Bike Lanes	Bethesda CBD	0.2
Edson Ln	Woodglen Dr	Rockville Pike	Separated Bike Lanes	White Flint	0.2
Ellsworth Dr	Fenton St	Georgia Ave	Shared Street	Silver Spring CBD	0.2
Executive Blvd	Old Georgetown Rd	Nicholson Ln	Separated Bike Lanes	White Flint	0.3
Falls Rd	Dunster Rd	River Rd	Sidepath	Potomac	3.8
FDA Blvd (North Side)	Cherry Hill Rd	FDA Gate	Separated Bike Lanes	White Oak	0.8
Fenton St to Piney Branch Rd	Fenton St	Piney Branch Rd	Neighborhood Greenway	Silver Spring/Takoma Park (East)	0.6
Fenton St	Ellsworth Dr	Wayne Ave	Separated Bike Lanes	Silver Spring CBD	0.1
Fenton St	Wayne Ave	King St	Separated Bike Lanes	Silver Spring CBD	0.6
Fernwood Rd to Battery Ln Neighborhood Greenway	Sonoma Rd	Battery Ln	Neighborhood Greenway	Bethesda/Chevy Chase (East)	1.0
Flower Ave to University Blvd	Flower Ave	University Blvd	Neighborhood Greenway	Long Branch Sector Plan	0.5
Franklin Ave to Arliss St	E Franklin Ave	Arliss St	Neighborhood Greenway	Long Branch Sector Plan, Silver Spring/Takoma Park (East)	0.8
Frederick Rd	Snowden Farm Pkwy	Stringtown Rd	Sidepath	Clarksburg Town Center	0.7

STREET	FROM	TO	BIKEWAY	POLICY AREA	LENGTH (MI)
Friendship Blvd	Willard Ave	District of Columbia	Separated Bike Lanes	Friendship Heights	0.2
Germantown to Grosvenor Breezeway	Falls Rd	Tuckerman Ln	Off-Street Trail	Potomac	1.4
Germantown to Life Sciences Center Breezeway	Observation Dr	Century Blvd	Separated Bike Lanes	Germantown East, Germantown West	0.5
Germantown to Life Sciences Center Breezeway	Great Seneca Hwy	City of Rockville	Separated Bike Lanes	R&D Village	0.9
Germantown to Life Sciences Center Breezeway	Sam Eig Hwy	Key West Ave	Sidepath	R&D Village	0.5
Glenmont to Silver Spring Breezeway	Georgia Ave	Arcola Ave	Neighborhood Greenway	Kensington/Wheaton	0.7
Glenmont to Silver Spring Breezeway	Arcola Ave	Blueridge Ave	Separated Bike Lanes	Kensington/Wheaton, Wheaton CBD	0.3
Glenmont to Silver Spring Breezeway	Blueridge Ave	University Blvd	Separated Bike Lanes	Wheaton CBD	0.2
Glenmont to Silver Spring Breezeway	University Blvd	Windham Ln	Separated Bike Lanes	Wheaton CBD	0.7
Glenmont to Silver Spring Breezeway	Columbia Blvd	Spring St	Neighborhood Greenway	Silver Spring/Takoma Park (West)	0.8
Glenmont to Silver Spring Breezeway	Planning Department Parking Lot	Cameron St	Separated Bike Lanes	Silver Spring CBD	0.2
Glenmont to Silver Spring Breezeway	Cameron St	Ellsworth Dr	Separated Bike Lanes	Silver Spring CBD	0.2
Glenside Dr / Erskine St	Carroll Ave	New Hampshire Ave	Neighborhood Greenway	Takoma/Langley	0.6
Goldsboro Rd	MacArthur Blvd	River Rd	Separated Bike Lanes	Bethesda / Chevy Chase (West)	1.1
Grandview Ave	Arcola Ave	Blueridge Ave	Neighborhood Greenway	Kensington/Wheaton, Wheaton CBD	0.3
Grandview Ave	Blueridge Ave	University Blvd	Separated Bike Lanes	Wheaton CBD	0.1
Grandview Ave	University Blvd	Reedie Dr	Separated Bike Lanes	Wheaton CBD	0.2
Great Seneca Hwy (West Side)	Key West Ave	Darnestown Rd	Sidepath	R&D Village	0.5
Greenwood Ave	Piney Branch Rd	Wabash Ave	Neighborhood Greenway	Long Branch Sector Plan	0.3
Greenwood Ave	Wabash Ave	Division St	Neighborhood Greenway	Silver Spring/Takoma Park (East)	0.5
Grubb Rd / Lyttonsville Rd	Brookville Rd	Lyttonsville Rd	Separated Bike Lanes	Silver Spring/Takoma Park (West)	0.2
Grubb Rd / Lyttonsville Rd	Lyttonsville Pl	East West Hwy	Separated Bike Lanes	Silver Spring/Takoma Park (West)	0.5
Industrial Pkwy (North Side)	Columbia Pike	FDA Blvd	Separated Bike Lanes	White Oak	1.1
Industrial Pkwy (South Side)	Columbia Pike	FDA Blvd	Separated Bike Lanes	White Oak	1.1

STREET	FROM	TO	BIKEWAY	POLICY AREA	LENGTH (MI)
Jefferson St / Executive Blvd	City of Rockville	Old Georgetown Rd	Separated Bike Lanes	North Bethesda / Twinbrook	0.8
Johns Hopkins Dr (West Side)	Belward Campus Dr	Key West Ave	Separated Bike Lanes	R&D Village	0.1
Jones Bridge Rd (South Side)	Glenbrook Pkwy	Maryland Ave	Sidepath	Bethesda/Chevy Chase (East)	0.1
Jones Bridge Rd to Capital Crescent Trail Bikeway	Jones Bridge Rd	Sleaford Rd	Neighborhood Greenway	Bethesda/Chevy Chase (East)	0.5
Jones Bridge Rd to Capital Crescent Trail Bikeway	Sleaford Rd	East West Hwy	Separated Bike Lanes / Neighborhood	Bethesda CBD	0.2
Jones Bridge Rd to Capital Crescent Trail Bikeway	East West Hwy	Montgomery Ave	Separated Bike Lanes	Bethesda CBD	0.1
Jones Bridge Rd to Capital Crescent Trail Bikeway	Montgomery Ave	Capital Crescent Trail	Shared Street	Bethesda CBD	0.1
Kensington Blvd / Galt Ave	Kensington Blvd	Upton Dr	Neighborhood Greenway	Wheaton CBD	0.1
Kensington Blvd	Galt Ave	Grandview Ave	Sidepath	Wheaton CBD	0.3
Leland St	Wisconsin Ave	46th St	Separated Bike Lanes	Bethesda CBD	0.1
Life Sciences Center Loop	Fields Rd	Key West Ave	Separated Bike Lanes	R&D Village	0.5
Little Seneca Pkwy (North Side)	Observation Dr Ext	Western Terminus	Sidepath	Clarksburg	0.3
Lockwood Dr / Stewart Ln	Old Columbia Pike	White Oak Park Apartments	Conventional Bike Lanes	White Oak	0.1
Lockwood Dr	White Oak Park Apartments	White Oak Shopping Center Drwy	Sidepath	White Oak	0.1
Lyttonsville Rd / Michigan Ave	Pennsylvania Ave	Lyttonsville Pl	Neighborhood Greenway	Silver Spring/Takoma Park (West)	0.3
Marinelli Rd	Executive Blvd	Woodglen Dr	Separated Bike Lanes	White Flint	0.2
Marinelli Rd	Rockville Pike	Nebel St	Separated Bike Lanes	White Flint	0.4
McKinley St	Grant St	Old Georgetown Rd	Neighborhood Greenway	Bethesda/Chevy Chase (East)	0.1
Life Sciences Center Loop	Key West Ave	Great Seneca Hwy	Separated Bike Lanes	R&D Village	1.1
Life Sciences Center Loop	Great Seneca Hwy	Great Seneca Hwy	Separated Bike Lanes	R&D Village	0.5
Medical Center Dr Ext (Outer Side)	Great Seneca Hwy	Key West Ave	Separated Bike Lanes	R&D Village	0.5
Medical Center Dr (Outer Side)	Great Seneca Hwy	Broschart Rd	Separated Bike Lanes	R&D Village	0.1
Montgomery Ave	Wisconsin Ave	East West Hwy	Separated Bike Lanes	Bethesda CBD	0.4

STREET	FROM	TO	BIKEWAY	POLICY AREA	LENGTH (MI)
Montgomery St	Wisconsin Ave	Belmont Ave Trail	Separated Bike Lanes	Friendship Heights	0.1
Montgomery Ln	Woodmont Ave	Wisconsin Ave	Separated Bike Lanes	Bethesda CBD	0.1
Nebel St Ext	Nicholson Ln	Rockville Pike	Separated Bike Lanes	White Flint	0.6
Nebel St	Randolph Rd	Nicholson Ln	Separated Bike Lanes	White Flint	0.2
Nicholson Ln	Old Georgetown Rd	Rockville Pike	Separated Bike Lanes	White Flint	0.5
Nicholson Ln	Rockville Pike	Nebel St	Separated Bike Lanes	White Flint	0.4
Norfolk Ave	Rugby Ave	Woodmont Ave	Shared Street	Bethesda CBD	0.3
Norfolk Ave	Woodmont Ave	Wisconsin Ave	Separated Bike Lanes	Bethesda CBD	0.1
Old Georgetown Rd	Rockville Pike	Nebel St	Separated Bike Lanes	White Flint	0.3
Old Georgetown Rd (South Side)	Rockville Pike	Towne Rd	Separated Bike Lanes	White Flint	0.3
Old Georgetown Rd	Woodmont Ave	Wisconsin Ave	Separated Bike Lanes	Bethesda CBD	0.2
Olney to Glenmont Breezeway	Wendy Ln	Matthew Henson Trail	Neighborhood Greenway	Aspen Hill	0.4
Olney to Glenmont Breezeway	Matthew Henson Trail	Georgia Ave	Neighborhood Greenway	Glenmont, Kensington/ Wheaton	1.7
Piedmont Crossing Local Park Trail	Amity Dr	Crabbs Branch Way	Off-Street Trail	Derwood	0.3
Piedmont Crossing Local Park Trail	Brown St	Crabbs Branch Way	Off-Street Trail	Derwood	0.1
Plum Orchard Dr	Broadbirch Dr	Cherry Hill Rd	Separated Bike Lanes	White Oak	0.6
Porter Rd / Sundale Dr / Washington Ave	Michigan Ave	Grubb Rd	Neighborhood Greenway	Silver Spring/Takoma Park (West)	0.8
Potomac to Veirs Mill Road Breezeway	Seven Locks Rd	I-270	Sidepath	Potomac	0.4
Prichard Rd	Georgia Ave	Amherst Ave	Separated Bike Lanes	Wheaton CBD	0.1
Reedie Dr	Veirs Mill Rd	Georgia Ave	Shared Street	Wheaton CBD	0.1
Reedie Dr	Georgia Ave	Amherst Ave	Separated Bike Lanes	Wheaton CBD	0.1
Rockville Pike (East Side)	Bou Ave	Edson Ln	Separated Bike Lanes	North Bethesda / Twinbrook, White Flint	1.2
Rockville Pike (East Side)	City of Rockville	Bou Ave	Separated Bike Lanes	North Bethesda / Twinbrook	0.2
Rockville Pike (West Side)	Marinelli Rd	Edson Ln	Separated Bike Lanes	White Flint	0.5

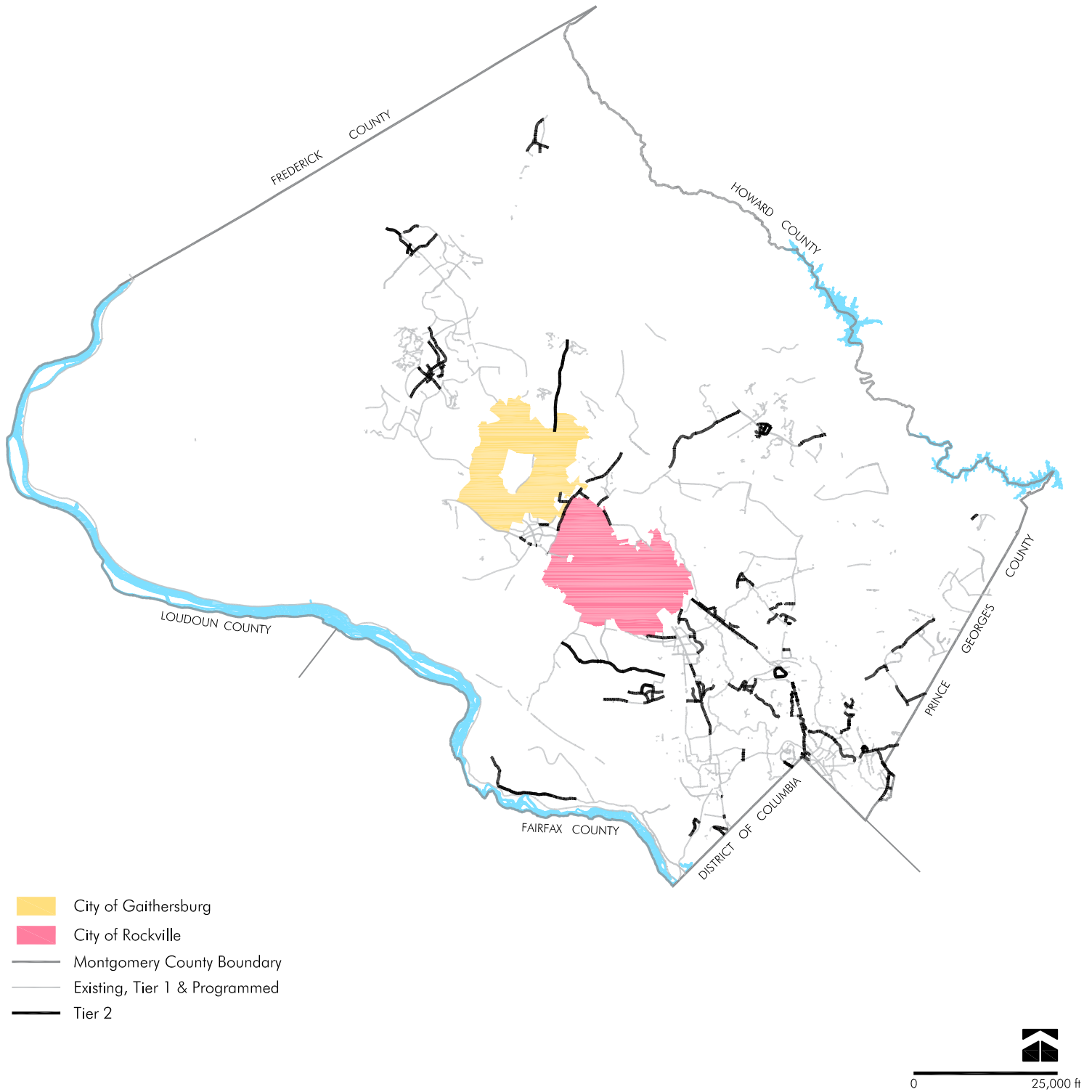
STREET	FROM	TO	BIKEWAY	POLICY AREA	LENGTH (MI)
Rosedale Ave	Wisconsin Ave	Neighborhood Connector	Neighborhood Greenway	Bethesda CBD, Bethesda / Chevy Chase (East)	0.2
Seven Locks Rd	Montrose Rd	Tuckerman Ln	Sidepath and Bikeable Shoulders	Potomac	2.5
Silver Spring to Glenmont West Bikeway	16th St	Spring St	Neighborhood Greenway	Silver Spring/Takoma Park (West)	0.5
Silver Spring Ave	Georgia Ave	Grove St	Priority Shared Lane Markings	Silver Spring CBD	0.3
Silver Spring Ave	Grove St	Piney Branch Rd	Neighborhood Greenway	Silver Spring/Takoma Park (East)	0.7
Sleaford Rd	Tilbury St	Capital Crescent Trail	Neighborhood Greenway	Bethesda CBD, Bethesda / Chevy Chase (East)	0.5
Spring St	16th St	2nd Ave	Separated Bike Lanes	Silver Spring CBD	0.1
St Elmo Ave	Woodmont Ave	Old Georgetown Rd	Conventional Bike Lanes	Bethesda CBD	0.2
Street B-5	Plum Orchard Dr	FDA Blvd	Separated Bike Lanes	White Oak	0.4
Tech Rd	Columbia Pike	Industrial Pkwy	Separated Bike Lanes	White Oak, Fairland / Colesville	0.4
Tilbury St	Rosedale Ave	Sleaford Rd	Neighborhood Greenway	Bethesda CBD	0.3
Towne Rd (West Side)	Rockville Pike	Montrose Pkwy	Separated Bike Lanes	North Bethesda / Twinbrook	0.2
Traville Gateway Dr Ext	Darnestown Rd	Medical Center Dr	Separated Bike Lanes	R&D Village	0.1
University Blvd	Connecticut Ave	Decatur Ave	Separated Bike Lanes	Kensington/Wheaton	0.2
University Blvd	Decatur Ave	Valley View Ave	Sidepath	Kensington/Wheaton, Wheaton CBD	0.8
University Blvd	Valley View Ave	Veirs Mill Rd	Separated Bike Lanes	Wheaton CBD	0.3
Veirs Mill Road to White Oak Breezeway	Columbia Pike	Prosperity Dr	Separated Bike Lanes	White Oak	0.1
Wayne Ave to Fenton St Neighborhood Greenway	Wayne Ave	Fenton St	Neighborhood Greenway	Silver Spring/Takoma Park (East)	0.7
Wayne Ave	Georgia Ave	Cedar St	Separated Bike Lanes	Silver Spring CBD	0.3
Wheaton Plaza Entrance	University Blvd	Wheaton Plaza Ring Rd	Separated Bike Lanes	Wheaton CBD	0.1
Wheaton Plaza Entrance	Veirs Mill Rd	Wheaton Plaza Ring Rd	Separated Bike Lanes	Wheaton CBD	0.1
Wheaton to Takoma / Langley Breezeway	Veirs Mill Rd	Amherst Ave	Separated Bike Lanes	Wheaton CBD	0.4
Wheaton to Takoma / Langley Breezeway	Amherst Ave	Dayton St	Sidepath	Wheaton CBD, Kensington / Wheaton	0.4
Wildwood Dr	Carroll Ave	Glenside Dr	Neighborhood Greenway	Takoma/Langley	0.6

STREET	FROM	TO	BIKEWAY	POLICY AREA	LENGTH (MI)
Wisconsin Ave	Bradley Blvd	Nottingham Dr	Sidepath	Bethesda CBD	0.1
Woodmont Ave	Strathmore St	Wisconsin Ave	Separated Bike Lanes	Bethesda CBD	0.1

Tier 2 Bikeway Projects

Tier 2 projects include bikeways located in the remaining Bicycle and Pedestrian Priority Areas.





Tier 2 Bikeways

STREET	FROM	TO	BIKEWAY	POLICY AREA	LENGTH (MI)
16th St	Georgia Ave	Spring St	Separated Bike Lanes	Silver Spring/Takoma Park (West)	0.8
Arliss St	Flower Ave	Piney Branch Rd	Separated Bike Lanes	Long Branch Sector Plan	0.3
Aspen Hill Rd	Connecticut Ave	Georgia Ave	Separated Bike Lanes	Aspen Hill	0.3
Bowie Mill Rd	Muncaster Mill Rd	Olney-Laytonsville Rd	Sidepath	Olney, Rural East (East)	3.3
Bradley Ln	Wisconsin Ave	West Ave	Separated Bike Lanes	Bethesda CBD	0.1
Burtonsville Access Rd	School Access Rd	Old Columbia Pike	Sidepath	Burtonsville Town Center	0.3
Burtonsville to Silver Spring Breezeway	New Hampshire Ave	Columbia Pike	Sidepath	White Oak	0.8
Burtonsville to Silver Spring Breezeway	Cherry Hill Rd	Stewart Ln	Sidepath	White Oak	1.8
Burtonsville to Silver Spring Breezeway	Colesville Rd	University Blvd	Neighborhood Greenway / Sidepath	Kensington/Wheaton	0.4
Burtonsville to Silver Spring Breezeway	University Blvd	Franklin Ave	Neighborhood Greenway / Off-Street Trail	Silver Spring/Takoma Park (East). Kensington / Wheaton	0.9
Burtonsville to Silver Spring Breezeway	Caroline Ave	Worth Ave	Sidepath	Silver Spring / Takoma Park (East)	0.2
Burtonsville to Silver Spring Breezeway	Franklin Ave	Sligo Creek Pkwy	Neighborhood Greenway	Silver Spring/Takoma Park (East)	0.1
Capital View Ave / Metropolitan Ave	Ferndale St	Forest Glen Rd	Sidepath	Kensington/Wheaton	1.2
Century Blvd	Aircraft Dr	Middlebrook Rd	Priority Shared Lane Markings	Germantown Town Center	0.5
Century Blvd	Middlebrook Rd	Wisteria Dr	Priority Shared Lane Markings	Germantown Town Center	0.2
City of Rockville to Friendship Heights Breezeway	Nottingham Dr	Oliver St	Sidepath	Bethesda/Chevy Chase (East)	0.1
City of Rockville to Wheaton Breezeway	Twinbrook Connector Trail	Glorus Pl	Separated Bike Lanes / Sidepath	North Bethesda/ Twinbrook, Aspen Hill, Kensington/Wheaton	2.8
Clarksburg Rd	Frederick Rd	Gateway Center Dr	Sidepath and Conventional Bike Lanes	Clarksburg Town Center	0.7
Clarksburg to City of Gaithersburg Breezeway	Shady Grove Rd	City of Rockville	Sidepath	Shady Grove Metro Station	0.3
Clarksburg to City of Gaithersburg Breezeway	Paramount Dr	E Gude Dr	Sidepath	Derwood	0.6
Colie Dr	Randolph Rd	Havard St	Sidepath	Kensington/Wheaton	0.4
Connecticut Ave (MD 185) East Bikeway	Georgia Ave	Independence St	Separated Bike Lanes	Aspen Hill	0.6

STREET	FROM	TO	BIKEWAY	POLICY AREA	LENGTH (MI)
Connecticut Ave (MD 185) West Bikeway	Farragut Ave	Knowles Ave	Separated Bike Lanes	Kensington/Wheaton	0.3
Connecticut Ave (West Side)	Laird Pl	Newdale Rd	Sidepath	Chevy Chase Lake Master Plan	0.1
Crystal Rock Dr (East Side)	Father Hurley Blvd	Cloverleaf Center Dr	Separated Bike Lanes	Germantown Town Center	0.3
Crystal Rock Dr (East Side)	Cloverleaf Center Dr	Aircraft Dr	Separated Bike Lanes	Germantown Town Center	0.3
Crystal Rock Dr (East Side)	Aircraft Dr	Germantown Rd	Separated Bike Lanes	Germantown Town Center	0.4
Crystal Rock Dr	Germantown Rd	Middlebrook Rd	Sidepath	Germantown West	0.4
Dale Dr	Woodland Dr	Piney Branch Rd	Sidepath	Silver Spring/Takoma Park (West), Silver Spring/Takoma Park (East)	2.1
Darnestown Rd (North Side)	Key West Ave	City of Rockville	Sidepath	R&D Village	0.8
Denley Rd	Randolph Rd	Georgia Ave	Neighborhood Greenway	Glenmont, Kensington/Wheaton	0.5
East West Hwy	Sundale Dr	16th St	Sidepath	Silver Spring/Takoma Park (West)	0.3
Flower Ave	Arliss St	Piney Branch Rd	Separated Bike Lanes	Long Branch Sector Plan	0.2
Frederick Rd	Comus Rd	Snowden Farm Pkwy	Sidepath and Bikeable Shoulders	Clarksburg Town Center	1.1
Georgia Ave (East Side)	Wendy Ln	Hewitt Ave	Sidepath	Aspen Hill	0.2
Georgia Ave (West Side)	Lansdowne Way	16th St	Separated Bike Lanes	Silver Spring/Takoma Park (West)	0.5
Germantown to Grosvenor Breezeway	Utility Corridor #1	Angus Pl	Sidepath and Conventional Bike Lanes	Potomac	0.4
Germantown to Grosvenor Breezeway	Angus Pl	Old Georgetown Rd	Sidepath and Conventional Bike Lanes	North Bethesda/Twinbrook, Potomac	1.9
Germantown to Life Sciences Center Breezeway	Century Blvd	Germantown Rd	Separated Bike Lanes	Germantown Town Center	0.2
Germantown to Life Sciences Center Breezeway	Dorsey Mill Rd	Aircraft Rd	Separated Bike Lanes	Germantown Town Center, Germantown West	1.4
Germantown Rd	Father Hurley Blvd	Middlebrook Rd	Sidepath	Germantown Town Center, Germantown West	1.1
Germantown Rd (South Side)	Crystal Rock Dr	Aircraft Dr	Sidepath	Germantown Town Center	0.1
Glenallan Ave (South Side)	Georgia Ave	Layhill Rd	Separated Bike Lanes	Glenmont	0.3
Glenallan Ave (South Side)	Layhill Rd	Randolph Rd	Separated Bike Lanes	Glenmont	0.3
Glenmont to Silver Spring Breezeway	Grandview Ave	Amherst Ave	Sidepath	Kensington/Wheaton	0.3
Glenmont to Silver Spring Breezeway	Windham Ln	Forest Glen Rd	Neighborhood Greenway	Kensington/Wheaton	1.1

STREET	FROM	TO	BIKEWAY	POLICY AREA	LENGTH (MI)
Glenmont to Silver Spring Breezeway	Woodland Dr	Georgia Ave	Sidepath	Kensington/Wheaton	0.1
Glenmont to Silver Spring Breezeway	Forest Glen Rd	Woodland Dr	Off-Street Trail	Kensington/Wheaton, Silver Spring/Takoma Park (West)	0.4
Glenmont to Silver Spring Breezeway	I-495 Bridge (East Side)	Columbia Blvd	Neighborhood Greenway	Silver Spring/Takoma Park (West)	0.2
Glenside Dr / Erskine St	New Hampshire Ave	Prince George's County	Neighborhood Greenway	Takoma/Langley	0.1
Goshen Rd	Warfield Rd	Girard St	Sidepath and Conventional Bike Lanes	Montgomery Village/Airpark	6.2
Grosvenor Ln	Bethesda Trolley Trail	Rockville Pike	Sidepath	North Bethesda/Twinbrook, Grosvenor	0.5
Grosvenor Pl	Tuckerman Ln	Grosvenor Ln	Sidepath	Grosvenor	0.5
Grubb Rd	East West Hwy	District of Columbia	Separated Bike Lanes	Silver Spring/Takoma Park (West)	0.3
High Corner St / Lewis Dr	Ridge Rd	Main St	Separated Bike Lanes	Damascus	0.2
Hillcrest Rd / Appomattox Ave	Georgia Ave	Spartan Rd	Separated Bike Lanes	Olney	0.4
Holton Ln	Wildwood Dr	New Hampshire Ave	Neighborhood Greenway	Takoma/Langley	0.1
Industrial Dr / Gaither Rd	City of Gaithersburg	Shady Grove Rd	Sidepath	Derwood	0.6
Intercounty Connector Trail Breezeway	MD 200 Ramp	Midcounty Hwy	Sidepath	Derwood	0.9
Intercounty Connector Trail Breezeway	Frederick Rd	Shady Grove Access Rd	Sidepath	Shady Grove Metro Station	0.5
Kensington to Chevy Chase Lake Bikeway	Connecticut Ave	Kensington Pkwy	Sidepath, Priority Shared Lane Markings	Kensington/Wheaton	0.3
Kensington to Chevy Chase Lake Bikeway	Jones Bridge Rd	Chevy Chase Lake Dr	Separated Bike Lanes / Sidepath	Chevy Chase Lake Master Plan	0.4
Kensington to Four Corners Neighborhood Greenway	Summit Ave	Lexington Ave Ext	Separated Bike Lanes	Kensington/Wheaton	0.3
Kensington to Four Corners Neighborhood Greenway	Lexington Ave Ext	St Paul St	Sidepath	Kensington/Wheaton	0.1
Knowles Ave	Rock Creek Trail	Summit Ave	Sidepath	Kensington/Wheaton	0.4
Layhill Rd (West Side)	Glenallan Ave	Georgia Ave	Separated Bike Lanes	Glenmont	0.2
Life Sciences Center to Shady Grove Metro Breezeway	Oakmont Ave	Crabbs Branch Way	Sidepath	Shady Grove Metro Station	0.3
Life Sciences Center to Shady Grove Metro Breezeway	Crabbs Branch Way	Shady Grove Access Rd	Sidepath	Shady Grove Metro Station	0.4
Life Sciences Center to Shady Grove Metro Breezeway	City of Gaithersburg	Frederick Rd	Sidepath	Shady Grove Metro Station	0.2

STREET	FROM	TO	BIKEWAY	POLICY AREA	LENGTH (MI)
Life Sciences Center to Shady Grove Metro Breezeway	Frederick Rd	Key West Ave	Sidepath	Shady Grove Metro Station, R&D Village	1.5
MacArthur Blvd	Falls Rd	Old Angler's Inn	Bikeable Shoulders	Potomac	1.1
MacArthur Blvd	Old Angler's Inn	I-495	Sidepath and Bikeable Shoulders	Potomac	3.6
Main St	Lewis Dr	Woodfield Rd	Separated Bike Lanes	Damascus	0.2
Main St	Woodfield Rd	Howard Chapel Dr	Sidepath	Damascus	0.3
Middlebrook Rd (West Side)	Locbury Dr	Century Blvd	Sidepath	Germantown Town Center	0.2
Middlebrook Rd (West Side)	Century Blvd	Germantown Rd	Sidepath	Germantown Town Center	0.1
Montrose Ave	Strathmore Hall St	Kenilworth Ave	Sidepath	North Bethesda/ Twinbrook, Grosvenor	0.5
Montrose Rd	Montrose Pkwy	Towne Rd	Sidepath	North Bethesda/Twinbrook	1.0
Morningwood Dr	Olney #1	Georgia Ave	Sidepath	Olney	0.2
New Hampshire Ave (East Side)	Lockwood Dr	Powder Mill Rd	Separated Bike Lanes / Sidepath	White Oak	0.9
New Hampshire Ave (East Side)	Powder Mill Rd	Elton Rd	Separated Bike Lanes	White Oak	0.2
New Hampshire Ave (East Side)	Sligo Creek Pkwy	Ethan Allen Ave	Sidepath	Silver Spring/Takoma Park (East)	0.5
New Hampshire Ave (West Side)	University Blvd	Glenside Dr	Separated Bike Lanes	Takoma/Langley	0.5
New Hampshire Ave (West Side)	Glenside Dr	Sligo Creek Pkwy	Sidepath	Takoma/Langley	0.1
Olney #2	Appomattox Ave	Spartan Rd	Separated Bike Lanes	Olney	0.4
Olney #6	Olney-Laytonsville Rd	Georgia Ave	Off-Street Trail	Olney	0.1
Olney to Glenmont Breezeway	Olney-Laytonsville Rd	Queen Mary Dr	Separated Bike Lanes	Olney	0.4
Olney to Glenmont Breezeway	Connecticut Ave	Wendy Ln	Sidepath	Aspen Hill	0.4
Olney-Laytonsville Rd / Olney-Sandy Spring Rd (MD 108) North Bikeway	Georgia Ave	Spartan Rd	Sidepath	Olney	0.2
Olney-Laytonsville Rd / Olney-Sandy Spring Rd (MD 108) North Bikeway	Dr. Bird Rd	Brooke Rd	Sidepath	Olney	1.0
Parklawn Dr / Nicholson Ln	Randolph Rd	Nebel St	Sidepath	North Bethesda/Twinbrook, White Flint	0.7
Parklawn Dr	Twinbrook Pkwy	Randolph Rd	Sidepath	North Bethesda/Twinbrook, Twinbrook	0.9

STREET	FROM	TO	BIKEWAY	POLICY AREA	LENGTH (MI)
Piney Branch Rd	Sligo Creek Pkwy	Flower Ave	Sidepath	Long Branch Sector Plan	0.2
Piney Branch Rd	Flower Ave	University Blvd	Separated Bike Lanes	Long Branch Sector Plan	0.5
Piney Branch Rd	University Blvd	Carroll Ave	Separated Bike Lanes	Long Branch Sector Plan	0.2
Piney Branch Rd	Carroll Ave	Prince George's County	Sidepath	Silver Spring/Takoma Park (East)	0.5
Potomac to Rock Spring Breezeway	Seven Locks Rd	Westlake Dr	Sidepath	Potomac	0.7
Potomac to Rock Spring Breezeway	Westlake Dr	Fernwood Rd	Sidepath	North Bethesda/Twinbrook, Potomac	0.3
Potomac to Rock Spring Breezeway	Fernwood Rd	Old Georgetown Rd	Sidepath	North Bethesda/Twinbrook	0.6
Powder Mill Rd	New Hampshire Ave	Prince George's County	Sidepath	White Oak	0.7
Queen Mary Dr	Olney Elementary School	Georgia Ave	Sidepath	Olney	0.1
Randolph Rd	Nebel St	Parklawn Dr	Sidepath	North Bethesda/Twinbrook	0.2
Ridge Rd	Woodfield Rd	Beall Ave	Sidepath	Damascus	0.6
Ridge Rd	Beall Ave	Main St	Separated Bike Lanes	Damascus	0.3
Ridge Rd	Main St	Bethesda Church Rd	Separated Bike Lanes	Damascus	0.3
River Rd (West Side)	Westbard Ave Ext	Capital Crescent Trail	Sidepath	Bethesda/Chevy Chase (West)	0.2
Rock Spring Dr	Fernwood Rd	Old Georgetown Rd	Separated Bike Lanes	North Bethesda/Twinbrook	0.7
Rockledge Dr	Westlake Ter	Rockledge Blvd	Separated Bike Lanes	North Bethesda/Twinbrook	0.6
Rockledge Dr	Rock Forest Dr	Democracy Blvd	Separated Bike Lanes	North Bethesda/Twinbrook	0.5
Rockville Pike (East Side)	Edson Ln	Strathmore Ave	Sidepath / Separated Bike Lanes	North Bethesda/Twinbrook, White Flint	0.4
Rockville Pike	Strathmore Ave	Grosvenor Ln	Sidepath	North Bethesda/Twinbrook, Grosvenor	0.7
Rockville Pike	Grosvenor Ln	Cedar Ln	Sidepath	Bethesda/Chevy Chase (East), Grosvenor, Kensington/Wheaton	1.1
Silver Spring to Glenmont West Bikeway	Georgia Ave	Forest Glen Rd	Neighborhood Greenway	Kensington/Wheaton	0.9
Silver Spring to Glenmont West Bikeway	Darcy Forest Dr	Georgia Ave	Sidepath	Kensington/Wheaton	0.1
Snowden Farm Pkwy	Frederick Rd	Clarksburg Rd	Sidepath	Clarksburg Town Center	0.6
Spartan Rd	Georgia Ave	Olney-Sandy Spring Rd	Separated Bike Lanes	Olney	0.3

STREET	FROM	TO	BIKEWAY	POLICY AREA	LENGTH (MI)
Spartan Rd	Olney-Sandy Spring Rd	Appomattox Ave	Separated Bike Lanes	Olney	0.2
St Paul St	McComas Ave	Montgomery Ave	Priority Shared Lane Markings / Off-Street Trail	Kensington/Wheaton	0.5
Strathmore Hall St	Tuckerman Ln	Montrose Ave	Sidepath	Grosvenor	0.1
Strathmore Trail	Strathmore Ave	Tuckerman Ln	Off-Street Trail	Grosvenor	0.1
Street A-251	Frederick Rd	Stringtown Rd	Sidepath	Clarksburg Town Center	0.7
Street B-2	Diamondback Dr	Omega Dr	Separated Bike Lanes	R&D Village	0.3
Street B-2	Georgia Ave	Randolph Rd	Separated Bike Lanes	Glenmont	0.1
Stringtown Rd (East Side)	Snowden Farm Pkwy	Gateway Center Dr	Sidepath	Clarksburg Town Center	1.2
Summit Ave / Farragut Ave	Connecticut Ave	Plyers Mill Rd	Separated Bike Lanes	Kensington/Wheaton	0.3
Summit Ave / Farragut Ave	Plyers Mill Rd	Knowles Ave	Separated Bike Lanes	Kensington/Wheaton	0.2
Summit Hills Bikeway	Spencer Rd	16th St	Sidepath or Separated Bike Lanes	Silver Spring/Takoma Park (West)	0.2
Tuckerman Ln	Falls Rd	Utility Corridor #1	Sidepath and Conventional Bike Lanes	Potomac	1.5
Tuckerman Ln	Rockville Pike	Rockville Pike	Separated Bike Lanes	Grosvenor	0.7
Twinbrook Pkwy (East Side)	Halpine Rd	Parklawn Dr	Separated Bike Lanes	North Bethesda/Twinbrook	0.4
Twinbrook Pkwy (East Side)	Parklawn Dr	City of Rockville	Separated Bike Lanes	North Bethesda/Twinbrook	0.1
University Blvd (West Side)	Lorain Ave	Colesville Rd	Sidepath	Kensington/Wheaton	0.2
University Blvd (West Side)	Carroll Ave	Prince George's County	Separated Bike Lanes	Takoma/Langley	0.6
Veirs Mill Rd (MD 586) Neighborhood Greenway	Glorus Pl	Veirs Mill Rd	Neighborhood Greenway	Kensington/Wheaton	0.8
Walter Johnson Rd	Bowman Mill Dr	Middlebrook Rd	Sidepath / Off-Street Trail	Germantown Town Center	0.4
Weller Rd / Briggs Rd	Flack St	Layhill Rd	Neighborhood Greenway / Sidepath, Off-Street Trail	Glenmont	0.9
Westbard Ave	River Rd	Westbard Cir	Separated Bike Lanes	Bethesda/Chevy Chase (West)	0.4
Westbard Ave	Westbard Cir	Massachusetts Ave	Sidepath	Bethesda/Chevy Chase (West)	0.3
Westlake Ter / Fernwood Rd	Westlake Dr	Rockledge Dr	Separated Bike Lanes	North Bethesda/Twinbrook, Potomac	0.8

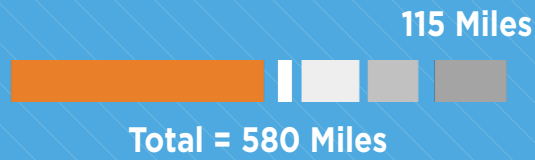
STREET	FROM	TO	BIKEWAY	POLICY AREA	LENGTH (MI)
Westlake Ter / Fernwood Rd	Rockledge Dr	Democracy Blvd	Separated Bike Lanes	North Bethesda/Twinbrook	0.4
Wheaton Plaza Ring Road	Wheaton Plaza Ring Road	Wheaton Plaza Ring Road	Separated Bike Lanes	Wheaton CBD	1.1
Wheaton to Takoma / Langley Breezeway	Lorain St	Lexington Ave	Sidepath	Kensington/Wheaton	0.3
Wheaton to Takoma / Langley Breezeway	Piney Branch Rd	Carroll Ave	Separated Bike Lanes	Long Branch Sector Plan	0.4
Wheaton to Takoma / Langley Breezeway	Carroll Ave	Prince George's County	Separated Bike Lanes	Takoma/Langley	0.2
Willard Ave	Willard Ave Trail	Wisconsin Ave	Separated Bike Lanes	Friendship Heights	0.5
Willard Ave Trail	Willard Ave	Western Ave	Off-Street Trail	Friendship Heights	0.5
Wisteria Dr (East Side)	Father Hurley Blvd	Germantown Rd	Separated Bike Lanes	Germantown Town Center	0.5
Wisteria Dr (East Side)	Germantown Rd	Crystal Rock Dr	Separated Bike Lanes	Germantown Town Center	0.3
Wisteria Dr (East Side)	Crystal Rock Dr	Great Seneca Hwy	Separated Bike Lanes	Germantown West	0.3
Woodfield Rd	Main St	Bethesda Church Rd	Sidepath	Damascus	0.3

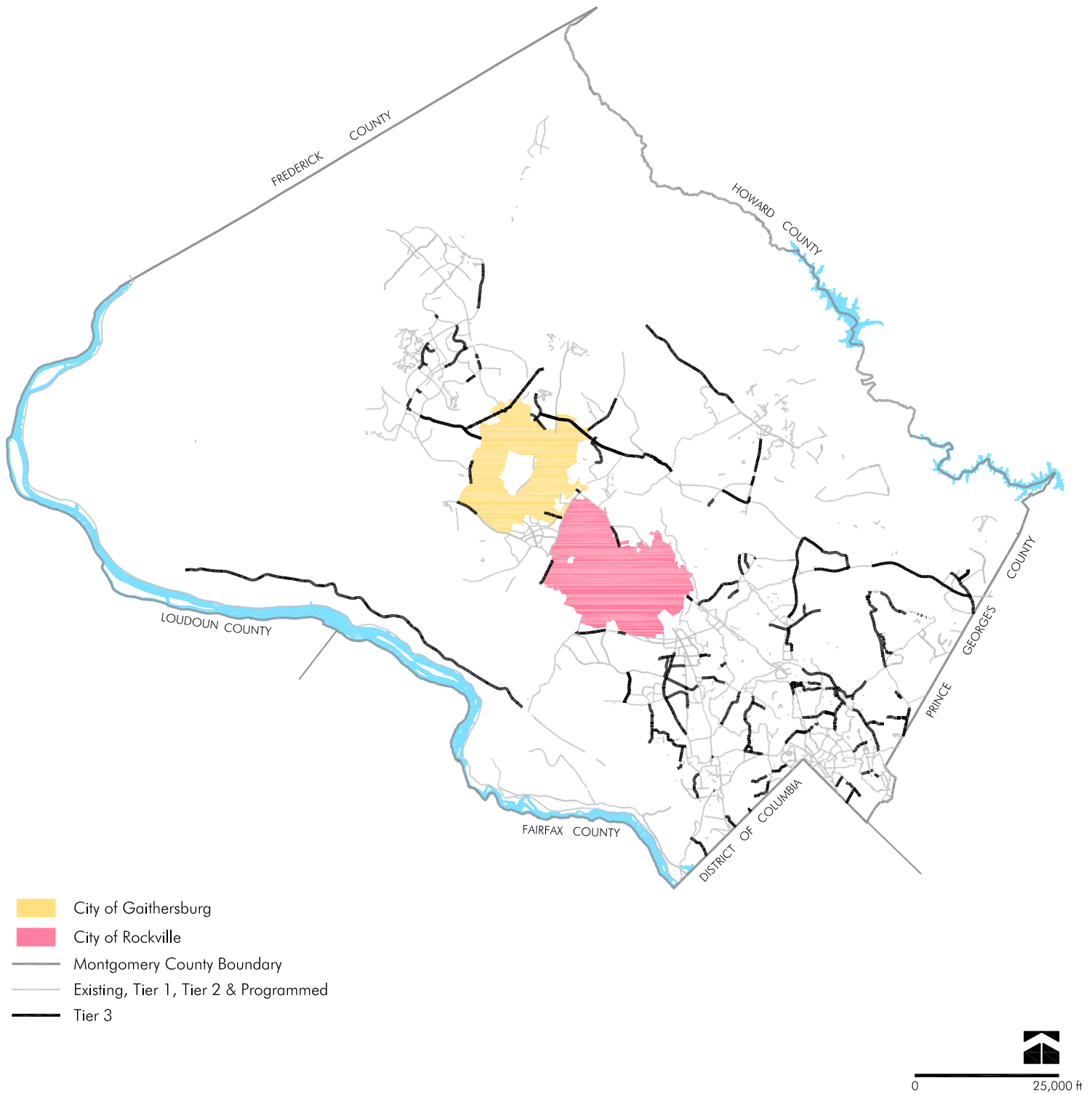


Tier 3 Bikeways

Tier 3 projects include:

- Remaining neighborhood greenways.
- Highest demand bikeways located outside of the Bicycle and Pedestrian Priority Areas.
- High demand recreational bicycling routes.





Tier 3 Bikeways

STREET	FROM	TO	BIKEWAY	POLICY AREA	LENGTH (MI)
Amity Dr	Washington Grove Ln	Piedmont Crossing Local Park Trail	Sidepath	Derwood	1.0
Aspen Hill Rd	Veirs Mill Rd	Arctic Ave	Sidepath	Aspen Hill	0.4
Aspen Hill Rd	Arctic Ave	Parkland Dr	Sidepath	Aspen Hill	0.9
Aspen Hill Rd	Parkland Dr	Connecticut Ave	Sidepath	Aspen Hill	0.4
Briggs Chaney Rd (North Side)	Old Columbia Pike	ICC Trail	Sidepath	Fairland/Colesville	1.1
Briggs Chaney Rd (South Side)	Old Columbia Pike	Prince George's County	Sidepath	Fairland/Colesville	0.6
Brookville Rd / Rock Creek Trail (North)	Brookville Rd	Beach Dr	Neighborhood Greenway	Bethesda/Chevy Chase (East)	0.6
Brookville Rd to Beach Dr Neighborhood Greenway	Beach Dr	Brookville Rd	Neighborhood Greenway	Bethesda/Chevy Chase (East)	0.9
Brookville Rd	Stewart Ave	Seminary Rd	Sidepath	Silver Spring/Takoma Park (West)	0.6
Burtonsville to Silver Spring Breezeway	Lockwood Dr	Southwood Ave	Sidepath	Kensington/Wheaton, White Oak	0.7
Burtonsville to Silver Spring Breezeway	Southwood Ave	Lorain Ave	Sidepath	Kensington/Wheaton	0.1
Capital Crescent Trail Breezeway Lighting	River Rd	Woodmont Ave	Off-Street Trail	Bethesda CBD, Bethesda/Chevy Chase (East)	N/A
Castle Blvd	Castle Ridge Cir	Briggs Chaney Rd	Separated Bike Lanes	Fairland/Colesville	0.5
Cedar Ln	Summit Ave	Rock Creek Trail	Separated Bike Lanes	Kensington/Wheaton	1.0
Christopher Ave	Montgomery Village Ave	City of Gaithersburg	Separated Bike Lanes	Montgomery Village/Airpark	0.2
City of Rockville to Friendship Heights Breezeway	Rossmore Dr	Fleming Ave	Sidepath	North Bethesda/Twinbrook	0.5
City of Rockville to Friendship Heights Breezeway	Tuckerman Ln	I-270 Spur	Priority Shared Lane Markings	North Bethesda/Twinbrook	0.1
City of Rockville to Wheaton Breezeway	Twinbrook Pkwy	Twinbrook Connector Trail	Sidepath	North Bethesda/Twinbrook	0.2
Clarksburg to City of Gaithersburg Breezeway	Observation Dr	Frederick Rd	Sidepath	Germantown East	0.1
Clarksburg to City of Gaithersburg Breezeway	Ridge Rd	Germantown Rd	Sidepath	Germantown East, Germantown Town Center	1.1
Clarksburg to City of Gaithersburg Breezeway	Germantown Rd	City of Gaithersburg	Sidepath	Germantown East	0.5
Clarksburg to City of Gaithersburg Breezeway	Waters Discovery Ln	Dorsey Mill Rd	Sidepath	Germantown East	0.1
Clarksburg to City of Gaithersburg Breezeway	W Gude Dr	Mannakee St	Separated Bike Lanes	Derwood	0.7

STREET	FROM	TO	BIKEWAY	POLICY AREA	LENGTH (MI)
Clopper Rd (West Side)	Germantown Rd	Great Seneca Hwy	Sidepath	Germantown West	0.2
Clopper Rd	Great Seneca Hwy	Mateny Rd	Sidepath and Bikeable Shoulders	Germantown West	1.0
Clopper Rd	Mateny Rd	City of Gaithersburg	Sidepath and Bikeable Shoulders	Germantown West, North Potomac	3.0
Colesville to White Oak Neighborhood Greenway	E Randolph Rd	New Hampshire Ave	Neighborhood Greenway	Fairland/Colesville	1.0
Colesville to White Oak Neighborhood Greenway	Eldrid Dr	Jackson Rd	Sidepath	Fairland/Colesville	0.8
Colesville Rd to White Oak Neighborhood Greenway	Jackson Rd	Old Columbia Pike	Neighborhood Greenway	Fairland/Colesville	1.0
Colesville Rd (US 29) West Neighborhood Greenway	Colesville Rd	North Four Corners Local Park	Neighborhood Greenway	Kensington/Wheaton	0.2
Colesville Rd (US 29) West Neighborhood Greenway	University Blvd	Sligo Creek Pkwy	Neighborhood Greenway	Kensington/Wheaton, Silver Spring/Takoma Park (West)	1.0
Connecticut Ave (MD 108) East Bikeway	Bel Pre Rd	Georgia Ave	Sidepath	Aspen Hill	0.2
Corridor Cities Transitway Trail	Omega Dr	King Farm Blvd	Off-Street Trail	Gaithersburg City	0.2
Darnestown Rd	Quince Orchard Rd	Tschiffely Square Rd	Separated Bike Lanes and Conventional Bike Lanes	North Potomac	0.4
Darnestown Rd	Tschiffely Square Rd	Main St	Sidepath and Conventional Bike Lanes	North Potomac	0.4
Dawson Farm Rd	Germantown Rd	Great Seneca Hwy	Sidepath	Germantown West	0.2
E Franklin Ave	University Blvd	End of E Franklin Ave	Neighborhood Greenway	Silver Spring/Takoma Park (East)	0.6
Edson Ln	Old Georgetown Rd	Woodglen Dr	Sidepath	North Bethesda/Twinbrook	0.5
Emory Ln	Holly Ridge Rd	Muncaster Mill Rd	Sidepath	Olney	0.3
Father Hurley Blvd (West Side)	Wisteria Dr	Crystal Rock Dr	Sidepath	Germantown West, Germantown Town Center	1.0
Fernwood Rd to Battery Ln Neighborhood Greenway	Fernwood Rd	Grant St	Neighborhood Greenway	Bethesda/Chevy Chase (East), Bethesda/Chevy Chase (West)	1.6
Fernwood Rd	Democracy Blvd	Bradley Blvd	Sidepath	Bethesda/Chevy Chase (West), North Bethesda/Twinbrook	1.3
Four Corners	University Blvd	Southwood Ave	Neighborhood Greenway	Kensington/Wheaton	0.6
Frederick Rd (East Side)	O'Neill Dr	Shady Grove Rd	Sidepath	Derwood	0.2
Garret Park Rd	Schuylkill Rd	Rock Creek Trail	Sidepath	Kensington/Wheaton, North Bethesda/Twinbrook	0.2
Georgia Ave to Sligo Creek Trail	Georgia Ave	Sligo Creek Trail	Neighborhood Greenway	Silver Spring/Takoma Park (West)	0.4

STREET	FROM	TO	BIKEWAY	POLICY AREA	LENGTH (MI)
Georgia Ave (East Side)	Randolph Rd	Mason St	Sidepath	Kensington/Wheaton	0.2
Georgia Ave (East Side)	Mason St	Henderson Ave	Sidepath	Kensington/Wheaton	0.3
Germantown to Burtonsville Breezeway	Clopper Rd	N Frederick Ave	Off-Street Trail	North Potomac	1.5
Germantown to Burtonsville Breezeway	N Frederick Ave	Montgomery Village Ave	Off-Street Trail	Montgomery Village/Airpark	1.9
Germantown to Grosvenor Breezeway	Old Georgetown Rd	Rockville Pike	Sidepath	Grosvenor, North Bethesda/Twinbrook	1.2
Germantown Rd (North Side)	Clopper Rd	Father Hurley Blvd	Sidepath	Germantown West	0.3
Germantown Town Center to Montgomery College Breezeway	Aircraft Dr	Observation Dr	Sidepath	Germantown East, Germantown Town Center, Germantown West	1.0
Glen Mill Rd	Darnestown Rd	Valley Dr	Sidepath	R&D Village	0.9
Glenbrook Rd	Battery Ln	Bradley Blvd	Neighborhood Greenway	Bethesda/Chevy Chase (East)	0.9
Glenmont to Silver Spring Breezeway	Randolph Rd	Mason St	Sidepath	Kensington/Wheaton	0.2
Grand Pre Rd	Bel Pre Rd	Connecticut Ave	Sidepath	Aspen Hill	0.5
Grant Ave	Piney Branch Rd	Ethan Allen Ave	Neighborhood Greenway	Silver Spring/Takoma Park (East)	0.7
Henderson Ave	Georgia Ave	Trail	Sidepath	Kensington/Wheaton	0.2
Hesketh St to Kirkside Dr	Wisconsin Ave	District of Columbia	Neighborhood Greenway	Bethesda/Chevy Chase (East)	0.5
Independence St	Parkland Dr	Connecticut Ave	Sidepath	Aspen Hill	0.4
Intercounty Connector Trail Breezeway	Shady Grove Rd	Muncaster Mill Rd	Sidepath	Derwood	0.9
Intercounty Connector Trail Breezeway	Applewood Ln	Needwood Rd	Sidepath and Bikeable Shoulders	Derwood, Rural East (East)	2.0
Intercounty Connector Trail Breezeway	Emory Ln	Georgia Ave	Off-Street Trail	Olney	1.2
Intercounty Connector Trail Breezeway	ICC Trail	Notley Rd	Sidepath	Cloverly	0.8
Intercounty Connector Trail Breezeway	Layhill Rd	Bonifant Rd	Off-Street Trail	Aspen Hill	0.8
Intercounty Connector Trail Breezeway	Bonifant Rd	Matthew Henson Trail Ext	Sidepath	Cloverly	0.4
Intercounty Connector Trail Breezeway	New Hampshire Ave	Briggs Chaney Rd	Off-Street Trail	Cloverly, Fairland/Colesville	3.5
Jones Bridge Rd (North Side)	Wisconsin Ave	200' East of Wisconsin Ave	Sidepath	Bethesda/Chevy Chase (East)	0.1

STREET	FROM	TO	BIKEWAY	POLICY AREA	LENGTH (MI)
Jones Bridge Rd	Connecticut Ave	Jones Mill Rd	Sidepath	Chevy Chase Lake Master Plan	0.6
Kenilworth / Montgomery	Kensington Pkwy	Jones Bridge Rd	Neighborhood Greenway	Bethesda/Chevy Chase (East)	0.3
Kennebec Ave	Sligo Creek Trail	Long Branch Trail	Neighborhood Greenway	Silver Spring/Takoma Park (East)	0.4
Kensington to Chevy Chase Lake Bikeway	Montgomery Ave	Rock Creek Trail	Sidepath	Kensington/Wheaton	1.2
Kensington to Chevy Chase Lake Bikeway	Rock Creek Trail	Husted Drwy	Sidepath	Kensington/Wheaton, Bethesda/Chevy Chase (East)	0.4
Kensington to Chevy Chase Lake Bikeway	Husted Drwy	Connecticut Ave	Separated Bike Lanes	Bethesda/Chevy Chase (East)	0.4
Kensington to Four Corners Neighborhood Greenway	Georgia Ave	University Blvd	Neighborhood Greenway	Kensington/Wheaton	1.8
Kent St	Kensington Pkwy	Stonebrook Dr	Neighborhood Greenway	Kensington/Wheaton	0.5
Layhill Rd	Park Vista Dr	Matthew Henson Trail	Sidepath and Conventional Bike Lanes	Aspen Hill	1.5
Layhill Rd	Matthew Henson Trail	Briggs Rd	Sidepath and Conventional Bike Lanes	Kensington/Wheaton	0.8
Layhill Rd	Briggs Rd	Glenallan Ave	Sidepath and Conventional Bike Lanes	Glenmont	0.7
Life Sciences Center Loop	Discoverly Dr	City of Gaithersburg	Sidepath	R&D Village	0.4
Linden Ln / Seminary Rd	Brookville Rd	Georgia Ave	Separated Bike Lanes / Sidepath	Silver Spring/Takoma Park (West)	0.3
Long Branch Pkwy	Maplewood Ave	Carroll Ave	Neighborhood Greenway	Silver Spring/Takoma Park (East)	0.2
Longdraft Rd	Birdsong Ln	Quince Orchard Rd	Sidepath	North Potomac	0.8
Lost Knife Rd	Montgomery Village Ave	Odendhal Ave	Separated Bike Lanes	Montgomery Village/Airpark	0.5
Luxmanor	Tilden Ln	Tuckerman Ln	Neighborhood Greenway	North Bethesda/Twinbrook	0.7
Maple Ave	Grant Ave	District of Columbia	Neighborhood Greenway	Silver Spring/Takoma Park (East)	0.5
Massachusetts Ave (MD 396) Bikeway	Westbard Ave	District of Columbia	Neighborhood Greenway / Sidepath	Bethesda/Chevy Chase (East), Bethesda/Chevy Chase (West)	0.9
Matthew Henson Trail Ext	Alderton Rd	Notley Rd	Off-Street Trail	Fairland/Colesville	1.1
Melrose St / Nevada Ave	Brookville Rd	Western Ave	Neighborhood Greenway	Bethesda/Chevy Chase (East)	0.2
Midcounty Hwy	Montgomery Village Ave	Goshen Rd	Sidepath and Bikeable Shoulders	Montgomery Village/Airpark	0.8

STREET	FROM	TO	BIKEWAY	POLICY AREA	LENGTH (MI)
Midcounty Hwy	Goshen Rd	Washington Grove Ln	Sidepath and Bikeable Shoulders	Montgomery Village/Airpark	1.9
Midcounty Hwy	Washington Grove Ln	Shady Grove Rd	Sidepath and Bikeable Shoulders	Derwood	1.5
Middlebrook Rd	I-270	Observation Dr	Sidepath	Germantown East	0.3
Middlebrook Rd (West Side)	Father Hurley Blvd	Locbury Dr	Sidepath	Germantown Town Center	0.2
Middlevale Ln / Garden Gate Rd	Briggs Rd	Randolph Rd	Sidepath	Kensington/Wheaton	0.4
Montgomery Village Ave (East Side)	Stedwick Rd	Midcounty Hwy	Sidepath	Montgomery Village/Airpark	0.7
Montgomery Village Ave (East Side)	Midcounty Hwy	City of Gaithersburg	Sidepath	Montgomery Village/Airpark	0.3
Naglee Rd	Rodney Rd	New Hampshire Ave	Neighborhood Greenway	White Oak	0.3
New Hampshire Ave (West Side)	Jackson Rd	Columbia Pike	Sidepath	Fairland/Colesville	0.9
New Hampshire Ave (West Side)	Columbia Pike	Lockwood Dr	Sidepath	White Oak	0.3
New Hampshire Ave (East Side)	Elton Rd	Prince George's County	Sidepath	White Oak, Silver Spring/Takoma Park (East)	1.0
Nicholson Ct / Wyaconda Rd	Nebel St Ext	Schuylkill Rd	Separated Bike Lanes / Off-Street Trail	North Bethesda/Twinbrook, White Flint	0.4
Oakview Dr	Northwest Branch Trail	New Hampshire Ave	Neighborhood Greenway	Silver Spring/Takoma Park (East)	0.7
Observation Dr (West Side)	Shakespeare Blvd	Germantown Rd	Sidepath	Germantown East	0.1
Old Georgetown Rd (East Side)	Democracy Blvd	Cheshire Dr	Separated Bike Lanes	North Bethesda/Twinbrook	0.2
Old Georgetown Rd	Cheshire Dr	Charles St	Sidepath	Bethesda/Chevy Chase (East), North Bethesda/Twinbrook	1.2
Olney to Glenmont Breezeway	Bel Pre Rd	Connecticut Ave	Sidepath	Aspen Hill	0.7
Olney to Glenmont Breezeway	Queen Mary Dr	Emory Ln	Sidepath	Olney	1.4
Olney-Laytonsville Rd/ Olney-Sandy Spring Rd (MD 108) North Bikeway	Town of Laytonsville	Fieldcrest Rd	Bikeable Shoulders	Rural East (East)	1.3
Olney-Laytonsville Rd/ Olney-Sandy Spring Rd (MD 108) North Bikeway	Fieldcrest Rd	Wickham Rd	Bikeable Shoulders	Rural East (East), Olney	1.7
Olney-Laytonsville Rd/ Olney-Sandy Spring Rd (MD 108) North Bikeway	Wickham Rd	Olney Mill Rd	Bikeable Shoulders	Rural East (East), Olney	1.0
Potomac to Veirs Mill Rd Breezeway	Falls Rd	Seven Locks Rd	Sidepath	Potomac	1.0

STREET	FROM	TO	BIKEWAY	POLICY AREA	LENGTH (MI)
Potomac to Veirs Mill Road Breezeway	I-270	Rockville Pike	Sidepath / Off-Street Trail	North Bethesda/Twinbrook	0.3
Ridge Rd	Little Seneca Pkwy	Snowden Farm Pkwy	Sidepath	Clarksburg	1.1
Ridge Rd	Snowden Farm Pkwy	Brink Rd	Sidepath	Clarksburg	0.4
River Rd	Willard Rd	Gary Rd	Bikeable Shoulders	Potomac, Rural West	12.6
Rock Creek - Grubb Rd	Rock Creek Trail	Grubb Rd	Neighborhood Greenway	Silver Spring/Takoma Park (West)	0.6
Rock Creek Trail to Sligo Creek Trail Bikeway	Woodland Dr	Brunett Ave	Sidepath	Kensington/Wheaton	1.1
Rodney Rd to Royal Rd Connector	Rodney Rd	Royal Rd	Off-Street Trail	White Oak	0.1
Rossmore Dr	Old Georgetown Rd	Bethesda Trolley Trail	Neighborhood Greenway	North Bethesda/Twinbrook	0.8
Silver Spring to Glenmont West Bikeway	Windham Ln	Evans Dr	Sidepath	Kensington/Wheaton	0.4
Sonoma Rd to Bradley Blvd Neighborhood Greenway	Sonoma Rd	Bradley Blvd	Neighborhood Greenway	Bethesda/Chevy Chase (East)	0.7
Strathmore Ave to Kensington Bikeway	Strathmore Ave	Weymouth St	Neighborhood Greenway	North Bethesda/Twinbrook	0.5
Strathmore Ave to Kensington Bikeway	Strathmore Trail	Kenilworth Ave	Sidepath	North Bethesda/Twinbrook	0.4
Summit Ave	Knowles Ave	Cedar Ln	Sidepath	Kensington/Wheaton	0.3
Takoma Ave	Gist Ave	Metropolitan Branch Trail	Neighborhood Greenway	Silver Spring/Takoma Park (East)	0.4
Tilden Ln	Danville Dr	Old Georgetown Rd	Sidepath	North Bethesda/Twinbrook	0.5
Trail	Henderson Ave	Arcola Ave	Off-Street Trail	Kensington/Wheaton	0.2
Veirs Mill Road to White Oak Breezeway	Denley Rd	Georgia Ave	Sidepath	Glenmont	0.7
Veirs Mill Road to White Oak Breezeway	Georgia Ave	Glenallan Ave	Sidepath	Glenmont	0.3
Veirs Mill Road to White Oak Breezeway	Glenallan Rd	Kemp Mill Rd	Sidepath	Kensington/Wheaton	0.9
Veirs Mill Road to White Oak Breezeway	Fairland Rd	Columbia Pike	Sidepath	Fairland/Colesville	1.3
Washington Grove Ln	Emory Grove Rd	Amity Dr	Sidepath	Montgomery Village/Airpark	0.2
Waters Landing Dr	Father Hurley Blvd	Crystal Rock Dr	Sidepath	Germantown West	0.4
Wayne Ave	Sligo Creek Pkwy	Whitney St	Sidepath	Silver Spring/Takoma Park (East)	0.6

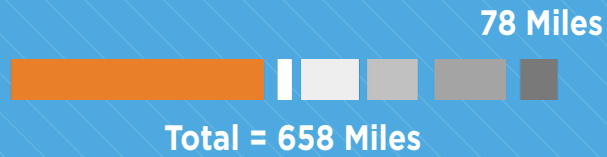
STREET	FROM	TO	BIKEWAY	POLICY AREA	LENGTH (MI)
Westlake Dr	Tuckerman Ln	Democracy Blvd	Sidepath and Bikeable Shoulders	Potomac	2.0
Wheaton to Takoma / Langley Breezeway	Dayton St	Arcola Ave	Sidepath	Kensington/Wheaton	0.9
Wheaton to Takoma / Langley Breezeway	Arcola Ave	Lorain St	Sidepath	Kensington/Wheaton	1.2
Wheaton to Takoma / Langley Breezeway	Lexington Dr	E Franklin Ave	Sidepath	Kensington/Wheaton, Silver Spring/Takoma Park (East)	0.7
Wheaton to Takoma / Langley Breezeway	E Franklin Ave	Piney Branch Rd	Sidepath / Separated Bike Lanes	Long Branch Sector Plan, Silver Spring/Takoma Park (East)	1.0
White Flint to Rock Spring Breezeway	Kennedy Shriver Aquatic Center Drwy	Democracy Blvd	Separated Bike Lanes / Sidepath	North Bethesda/ Twinbrook, White Flint	1.6
Windham Ln	Georgia Ave	Sligo Creek Trail	Neighborhood Greenway	Kensington/Wheaton, Wheaton CBD	0.8
Wolf Dr	New Hampshire Ave	Kara Ln	Sidepath	Fairland/Colesville	0.1
Woodfield Rd	Airpark Rd	Muncaster Mill Rd	Sidepath	Montgomery Village/ Airpark	0.6
Woodfield Rd	Muncaster Mill Rd	Emory Grove Rd	Sidepath	Montgomery Village/ Airpark	0.8

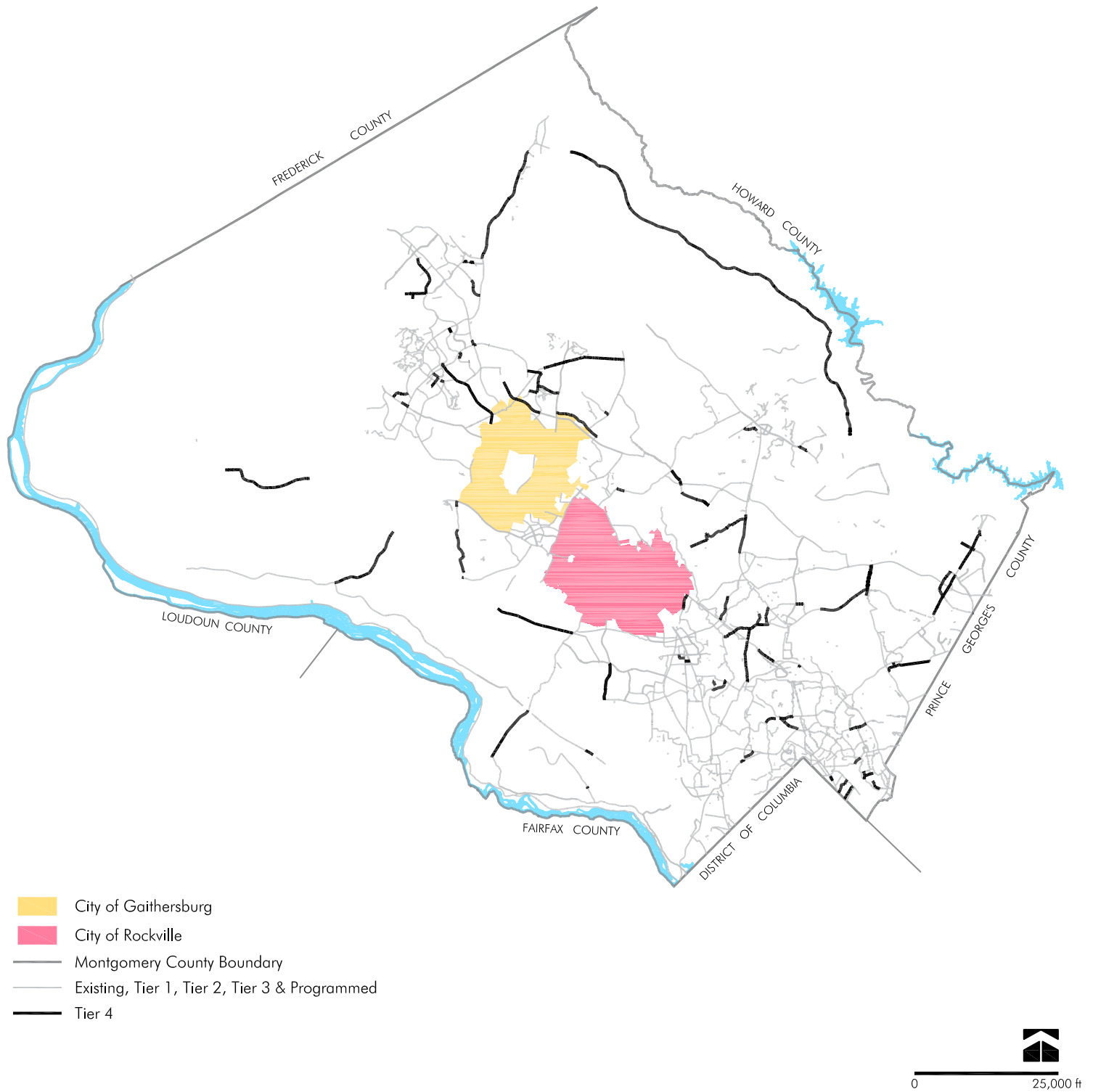


Tier 4 Bikeway Projects

Tier 4 projects include:

- All remaining bikeways that are recommended for completion within the life of the plan.
- Several heavily-used recreational bicycling routes.





Tier 4 Bikeways

STREET	FROM	TO	BIKEWAY	POLICY AREA	LENGTH (MI)
Baltimore Ave	Philadelphia Ave	District of Columbia	Neighborhood Greenway	Silver Spring/Takoma Park (East)	0.4
Briggs Rd	Layhill Rd	Middlevale Ln	Sidepath	Kensington/Wheaton	0.2
Burtonsville to Silver Spring Breezeway	Blackburn Rd	Briggs Chaney Rd	Sidepath	Fairland/Colesville	1.5
Burtonsville to Silver Spring Breezeway	Briggs Chaney Rd	Cherry Hill Rd	Sidepath	Fairland/Colesville	1.5
Cedar Ave	District of Columbia	Philadelphia Ave	Neighborhood Greenway	Silver Spring/Takoma Park (East)	0.4
Centerway Rd	Montgomery Village Ave	Goshen Rd	Sidepath	Montgomery Village/Airpark	0.8
City Hall Parking Lot	Philadelphia Ave	Grant Ave	Off-Street Trail	Silver Spring/Takoma Park (East)	0.1
City of Rockville to Wheaton Breezeway	Glorus Pl	College View Dr	Separated Bike Lanes / Sidepath	Kensington/Wheaton	0.7
Clopper Rd (East Side)	Kingsview Rd	Germantown Rd	Sidepath	Germantown West	0.3
Connecticut Ave (MD 185) West Bikeway	Randolph Rd	Veirs Mill Rd	Sidepath / Contra-Flow Bike Lane	Kensington/Wheaton	0.4
Connecticut Ave (MD 185) West Bikeway	Veirs Mill Rd	Denfeld Ave	Sidepath	Kensington/Wheaton	0.9
Connecticut Ave (MD 185) West Bikeway	Denfeld Ave	Farragut Ave	Sidepath	Kensington/Wheaton	0.5
Corridor Cities Transitway Trail	Century Blvd	City of Gaithersburg	Off-Street Trail	Germantown Town Center, Germantown West, North Potomac	2.8
Crystal Rock Dr	Middlebrook Rd	Bowman Mill Dr Ext	Sidepath	Germantown West	0.4
Dalewood Dr / Dean Rd	Weller Rd	Randolph Rd	Neighborhood Greenway	Kensington/Wheaton	0.4
Damascus Rd	Stanley Hills Way	Georgia Ave	Bikeable Shoulders	Damascus, Rural East (East), Rural East (West)	9.0
Dr. Bird Rd	Olney-Sandy Spring Rd	Norwood Rd	Sidepath	Rural East (East)	0.3
Emory Grove Rd	Goshen Rd	Strawberry Knoll Rd	Sidepath	Montgomery Village/Airpark	0.4
Emory Grove Rd	Strawberry Knoll Rd	Woodfield Rd	Sidepath	Montgomery Village/Airpark	0.9
Emory Grove Rd	Woodfield Rd	Washington Grove Ln	Sidepath	Montgomery Village/Airpark	0.4
Executive Blvd	Nicholson Ln	Woodglen Dr	Separated Bike Lanes	White Flint	0.3
Fairland Rd	Old Columbia Pike	Briggs Chaney Rd	Sidepath	Fairland/Colesville	0.3

STREET	FROM	TO	BIKEWAY	POLICY AREA	LENGTH (MI)
Falls Rd	River Rd	MacArthur Blvd	Sidepath	Potomac	1.2
Flower Ave	Carroll Ave	Sligo Creek Trail	Neighborhood Greenway	Silver Spring/Takoma Park (East)	0.4
Franklin Ave	Caroline Ave	University Blvd	Sidepath	Silver Spring/Takoma Park (East)	0.6
Frederick Rd (West Side)	Shakespeare Blvd	Germantown Rd	Sidepath	Germantown East	0.2
Germantown to Burtonsville Breezeway	Montgomery Village Ave	Woodfield Rd	Off-Street Trail	Montgomery Village/Airpark	2.7
Germantown to Grosvenor Breezeway	Piney Meetinghouse Rd	Falls Rd	Off-Street Trail	Potomac, Rural West	2.6
Germantown to Life Sciences Center Breezeway	Germantown Rd	Crystal Rock Dr	Separated Bike Lanes	Germantown Town Center	0.2
Germantown to Life Sciences Center Breezeway	Crystal Rock Dr	Great Seneca Hwy	Sidepath	Germantown West	0.1
Germantown Rd (North Side)	Frederick Rd	Scenery Dr	Sidepath	Germantown East	0.1
Goldenrod Ln	Germantown Rd	Observation Dr	Sidepath	Germantown East	0.2
Greencastle Rd	Old Columbia Pike	Greencastle Ridge Ter	Sidepath and Conventional Bike Lanes	Fairland/Colesville	0.8
Hathaway Dr / Valleywood Dr	Flack St	Randolph Rd	Sidepath / Off-Street Trail	Kensington/Wheaton	0.5
Hopkins Rd	Clopper Rd	Father Hurley Blvd	Sidepath	Germantown West	0.6
Kenilworth Ave	Montrose Ave	Oxford St	Sidepath	North Bethesda/Twinbrook	0.2
Little Seneca Pkwy (North Side)	Broadway Ave	Observation Dr Ext	Sidepath	Clarksburg	0.7
Little Seneca Pkwy	Snowden Farm Pkwy	Ridge Rd	Sidepath	Clarksburg	0.3
Manor Rd	Connecticut Ave	Jones Bridge Rd	Sidepath	Chevy Chase Lake Master Plan	0.4
Maple Ave	Kennebec Ave	Hilltop Rd	Neighborhood Greenway	Silver Spring/Takoma Park (East)	0.3
Maplewood Ave	Maple Ave	Long Branch Pkwy	Neighborhood Greenway	Silver Spring/Takoma Park (East)	0.3
Metropolitan Branch Trail Breezeway (Ultimate)	King St	Fenton St	Off-Street Trail	Silver Spring CBD	0.2
Midcounty Hwy	Great Seneca Creek	Montgomery Village Ave	Sidepath	Montgomery Village/Airpark	1.7
Montgomery Village Ave (East Side)	Stewartown Rd	Stedwick Rd	Sidepath	Montgomery Village/Airpark	0.7
Morningwood Dr	Headwaters Dr	Olney #1	Sidepath	Olney	0.5

STREET	FROM	TO	BIKEWAY	POLICY AREA	LENGTH (MI)
Muncaster Mill Rd	Needwood Rd	ICC Trail	Sidepath and Bikeable Shoulders	Rural East (East)	1.0
Muncaster Mill Rd	Avery Rd	Emory Ln	Sidepath and Bikeable Shoulders	Olney, Rural East (East), Aspen Hill	1.2
Needwood Rd	Redland Rd	ICC Trail	Sidepath	Derwood	0.3
Neighborhood Connector	Reedie Dr	University Blvd	Neighborhood Connector	Wheaton CBD	0.1
New Hampshire Ave to FDA Blvd Connector	New Hampshire Ave	FDA Blvd	Off-Street Trail	White Oak	1.5
New Hampshire Ave (East Side)	ICC Trail	Wolf Dr	Sidepath	Fairland/Colesville	1.0
New Hampshire Ave (West Side)	ICC Trail	Randolph Rd	Sidepath	Fairland/Colesville	0.9
New Hampshire Ave	Georgia Ave	Olney-Sandy Spring Rd	Bikeable Shoulders	Rural East (East)	6.3
Newdale Rd	Terminus	Connecticut Ave	Sidepath	Chevy Chase Lake Master Plan	0.1
Norbeck Rd (North Side)	Muncaster Mill Rd	Georgia Ave	Sidepath	Olney	0.3
Norbeck Rd (MD 28) North Bikeway	Bauer Dr	Muncaster Mill Rd	Neighborhood Greenway	Aspen Hill	2.2
Observation Dr Ext (West Side)	Roberts Tavern Dr	Little Seneca Pkwy	Sidepath	Clarksburg	1.3
Old Columbia Pike	Briggs Chaney Rd	Fairland Rd	Sidepath and Conventional Bike Lanes	Fairland/Colesville	0.8
Olney to Glenmont Breezeway	Emory Ln	Norbeck Rd	Sidepath	Olney	0.1
Olney to Glenmont Breezeway	Norbeck Rd	Connecticut Ave	Sidepath	Aspen Hill	1.2
Parkland Dr	Independence St	Veirs Mill Rd	Sidepath	Aspen Hill	0.8
Persimmon Tree Rd	Eggert Rd	MacArthur Blvd	Sidepath	Potomac, Bethesda/Chevy Chase (West)	0.1
Piney Branch Rd	Philadelphia Ave	Ray Dr	Sidepath	Silver Spring/Takoma Park (East)	0.2
Piney Branch Rd	Silver Spring Ave	Sligo Creek Pkwy	Sidepath	Silver Spring/Takoma Park (East)	0.3
Quince Orchard Rd	Darnestown Rd	Dufief Mill Rd	Sidepath	North Potomac	1.1
Randolph Rd	Rock Creek Trail	Veirs Mill Rd	Sidepath	Kensington/Wheaton	0.4
Ridge Rd	Bethesda Church Rd	Valley Park Dr	Sidepath	Damascus	0.8
Ridge Rd	Valley Park Dr	Sweepstakes Rd	Sidepath	Damascus	0.9

STREET	FROM	TO	BIKEWAY	POLICY AREA	LENGTH (MI)
Ridge Rd	Sweepstakes Rd	Skylark Rd	Sidepath	Clarksburg, Damascus, Rural East (West)	2.2
River Rd	Bradley Blvd	Seven Locks Rd	Sidepath	Potomac	0.3
Rock Creek Trail to Sligo Creek Trail Bikeway	Stoneybrook Dr	Linden Ln	Off-Street Trail	Kensington/Wheaton	0.4
Rock Creek Trail to Sligo Creek Trail Bikeway	Seminary Rd	Darcy Forest Dr	Sidepath	Kensington/Wheaton	0.4
Security Ln	Rockville Pike	Woodglen Dr	Separated Bike Lanes	White Flint	0.2
Seminary Rd	Forest Glen Rd	2nd Ave	Conventional Bike Lanes	Kensington/Wheaton, Silver Spring/Takoma Park (West)	0.7
Seneca Rd	Darnestown Rd	River Rd	Bikeable Shoulders	Rural West	2.8
Seven Locks Rd	Tuckerman Ln	Democracy Blvd	Sidepath and Bikeable Shoulders	Potomac	1.6
Sidepath	Little Seneca Pkwy	Black Hills Regional Park	Sidepath	Clarksburg	0.2
Snouffer School Rd	Sweet Autumn Dr	Woodfield Rd	Sidepath	Montgomery Village/Airpark	0.2
Stedwick Rd	Watkins Mill Rd	Montgomery Village Ave	Sidepath	Montgomery Village/Airpark	0.3
Stewartown Rd Ext	Watkins Mill Rd	Montgomery Village Ave	Sidepath	Montgomery Village/Airpark	0.5
Strathmore to Kensington Bikeway	Oxford St	Knowles Ave	Sidepath	North Bethesda/Twinbrook	0.1
Street B-25	Ridge Rd	Seneca Meadows Pkwy	Separated Bike Lanes	Germantown Town Center	0.2
Travilah Rd	Darnestown Rd	Dufief Mill Rd	Sidepath	North Potomac	0.1
Twinbrook Pkwy (East Side)	Veirs Mill Rd	Halpine Rd	Sidepath	North Bethesda/Twinbrook	0.5
Veirs Mill Road to White Oak Breezeway	Veirs Mill Rd	Connecticut Ave	Sidepath	Kensington/Wheaton	0.5
Veirs Mill Road to White Oak Breezeway	Connecticut Ave	Denley Rd	Sidepath	Kensington/Wheaton	0.7
Veirs Mill Road to White Oak Breezeway	Kemp Mill Rd	New Hampshire Ave	Sidepath	Fairland/Colesville	1.8
Weymouth St	Montrose Ave	Oxford St	Sidepath	North Bethesda / Twinbrook	0.5
White Oak - FDA Connector	Lockwood Dr	FDA	Off-Street Trail	White Oak	0.1
Whites Ferry Rd	Town of Poolesville	Darnestown Rd	Bikeable Shoulders	Rural West	3.1

THIS PAGE INTENTIONALLY LEFT BLANK



Prioritization of Bicycle Parking Stations

The table below prioritizes implementation of the bicycle parking stations into four tiers (Tier 1, Tier 2, Tier 3 and Tier 4) based on anticipated demand (see Appendix G for a description of how demand was assessed). All bicycle parking stations are recommended to be completed during the life of this plan, although some are contingent upon development approvals, which may occur beyond the life of this master plan. Construction of bicycle parking stations will be a cooperative effort between Montgomery County, transit agencies and private development, depending on a number of factors, including development opportunities, funding sources and property ownership. **Operation of the Bethesda South and Silver Spring bicycling stations are recommended to coincide with operation of the Purple Line.**

Prioritization of Bicycle Parking Stations

STATION	TRANSIT CORRIDOR	MINIMUM NUMBER OF SPACES	
		LONG-TERM	SHORT-TERM
TIER 1			
Bethesda South	Red Line, Purple Line	330	130
Forest Glen	Red Line	300	100
Glenmont	Red Line	400	150
Shady Grove	Red Line, CCT	330	110
Silver Spring	Red Line, Purple Line	600	170
Wheaton	Red Line	400	100
White Flint (Metrorail)	Red Line	250	50
TIER 2			
Bethesda North	Red Line	100	50
Friendship Heights	Red Line	200	50
Germantown (MARC)	MARC	30	10
Grosvenor	Red Line	350	100
Medical Center	Red Line	200	50
Silver Spring Library	Purple Line	40	10
TIER 3			
Connecticut Avenue	Purple Line	20	10
Kensington	MARC	30	10

STATION	TRANSIT CORRIDOR	MINIMUM NUMBER OF SPACES	
		LONG-TERM	SHORT-TERM
LSC Belward	CCT	80	20
LSC Central	CCT	60	20
LSC West	CCT	90	10
Takoma / Langley	Purple Line	20	10
White Flint (MARC)	MARC	20	10
TIER 4			
Boys	MARC	20	10
Long Branch	Purple Line	30	10
Lyttonsville	Purple Line	50	10
Piney Branch Road	Purple Line	10	10
Washington Grove	MARC	10	10
Woodside	Purple Line	20	10



Caption: A bicycle parking station in Boulder, Colorado. Photo: Matt Johnson

Prioritization of Bicycle-Supportive Programs

The table below identifies target dates for initiating bicycle-supportive programs.

Prioritization of Bicycle-Supportive Programs

PROGRAM	RECOMMENDED TIMEFRAME
1.9 Bicycle Pedestrian Priority Areas	Short Term
2.1 Bikeways Program – Minor Projects	Short Term
2.2 Roadway and Bikeway Related Maintenance	Medium Term
2.3 Snow Removal / Wind / Rain Storms	Medium Term
2.4 Resurfacing: Primary/Arterial AND Sidewalk & Curb Replacement	Medium Term
3.1 BikeMontgomery Outreach Program	Medium Term
3.2 Bicycle Master Plan Monitoring Report	Ongoing
3.3 Neighborhood Greenway Program	Short Term
3.4 Bicycle Parking Program	Short Term
3.5 Public School Bicycle Education	Medium Term
3.6 Bicycle Facility Education	Short Term
3.7 Bicycle Count Program	Short Term
3.8 Countywide Wayfinding Plan	Medium Term

Prioritization of Bicycle-Supportive Laws, Regulations and Policies

The table below identifies target dates for changes to bicycle-supportive laws, regulations and policies.

Prioritization of Bicycle-Supportive Laws, Regulations and Policies

LAW, REGULATION AND POLICY	RECOMMENDED TIMEFRAME
ROADWAY LAWS AND POLICIES	
2.1 Authorize Lower Posted Speed Limits	Ongoing
2.2 Repeal the Mandatory Use Law	Ongoing
2.3 Conduct a "Rules of the Road" Assessment	Short Term
2.4 Replace the State's Marked Bike Lane Policy	Ongoing
2.5 Develop a County Policy on E-Bikes	Short Term
DESIGN STANDARDS AND PRACTICES	
2.6 Establish Level of Traffic Stress Targets	Short Term
2.7 Update Context Sensitive Road Design Standards	11/1/2019 (Per Vision Zero Action Plan)
2.8 Review all Designed Projects Against Best Practices	Short Term
2.9 Make Separated Bikeways the Preferred Bikeway Facility Type	Short Term
2.10 Extending Separated Bike Lanes Through Intersections	Short Term
2.11 Consolidate Driveways along Master-Planned Bikeways	Short Term
2.12 Develop a Shared Lane Marking Policy	Short Term
2.13 Develop Bicycle Parking Standards for County Facilities	Short Term
2.14 Reassess Road Code Urban Area Boundaries	Short Term
2.15 Establish Standards for Trail Crossings at Major Roads	Short Term

LAW, REGULATION AND POLICY	RECOMMENDED TIMEFRAME
MAINTENANCE	
2.16 Develop Protocols for Bicycle Facility Closures and Detours	Short Term
OTHER	
2.17 School Site Selection	Short Term
2.18 Enable Traffic Calming and Access Restrictions on Neighborhood Greenways	Short Term
2.19 Update the Zoning Code	Short Term
2.20 Revise the Bicycle to School Policy	Short Term
2.21 Abandonments	Short Term
2.22 Loading Zones	Short Term



*Photo: Scott Wilets
Best Other Category
Bicycle Master Plan Photo Contest*



CITY OF
VANCOUVER

GREENEST
CITY 2020

12:03

BICYCLES TODAY

1974

THIS YEAR

8477

Bike Trips on both
East and West Sides of
the Burrard Bridge



BIKE VANCOUVER