



**Illustration from the 1964 General Plan*

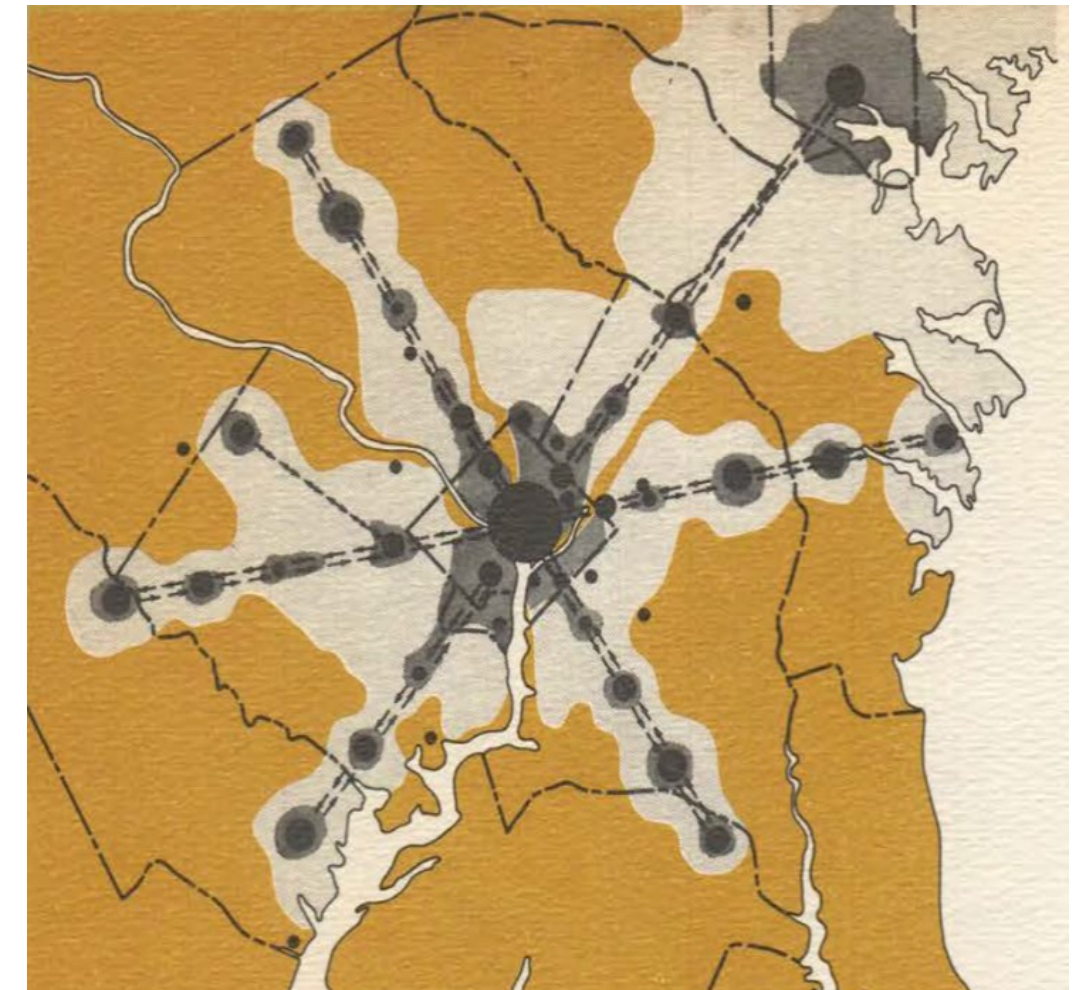
 **MONTGOMERY PLANNING**
WINTER SPEAKER SERIES
montgomeryplanning.org/imagine

WHAT IS REAL RESILIENCE? POSITIONING OUR COMMUNITIES TO THRIVE IN CHANGING TIMES

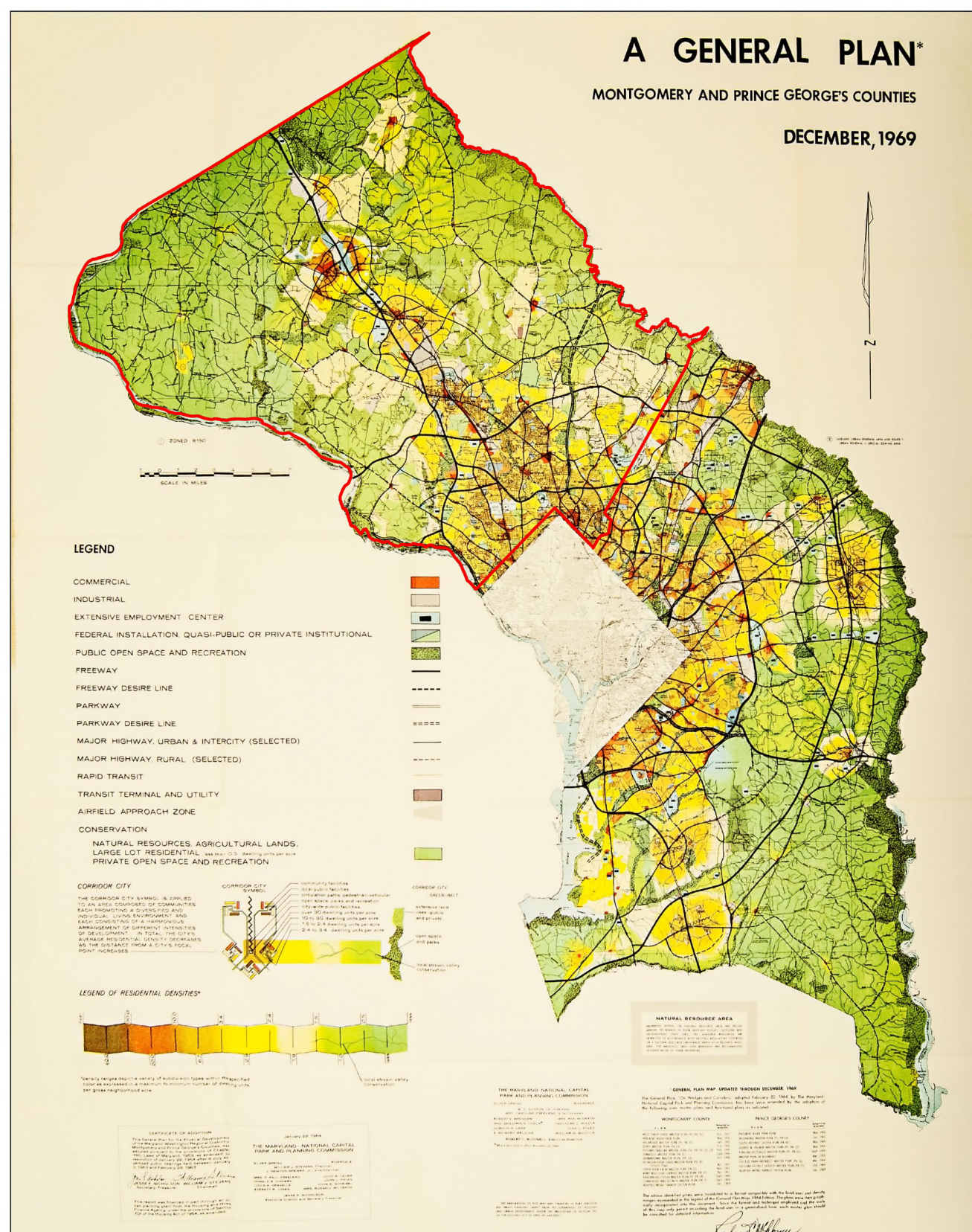
Session 2

Featuring Harriet Tregoning
February 13, 2019, 6–7:30 PM

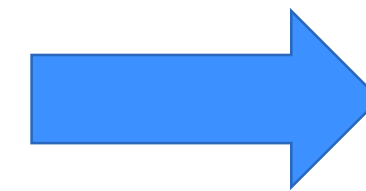
1964 General Plan “...on Wedges and Corridors”



1969 General Plan and its Implementation



Increase
Affordable
Housing



MPDU Law

Protect
Farmland



TDRs

Timely
Infrastructure



APFO

Why Update the General Plan?

- The last comprehensive update was in 1969
- Changed from a bedroom community to a major employment center with a diverse population of over a million people
- Entering another era of disruptive technologies and cultural shifts
- Time to step back and create a visionary plan for the next 30 years

Change is an Opportunity to Thrive

- Demographics shifts
- Digital transformation of everything
- Climate change
- Preference for walkable spaces
- Sharing economy
- Autonomous vehicles

Process and Timeline

