

GRAND PARK DEVELOPMENT SKETCH PLAN

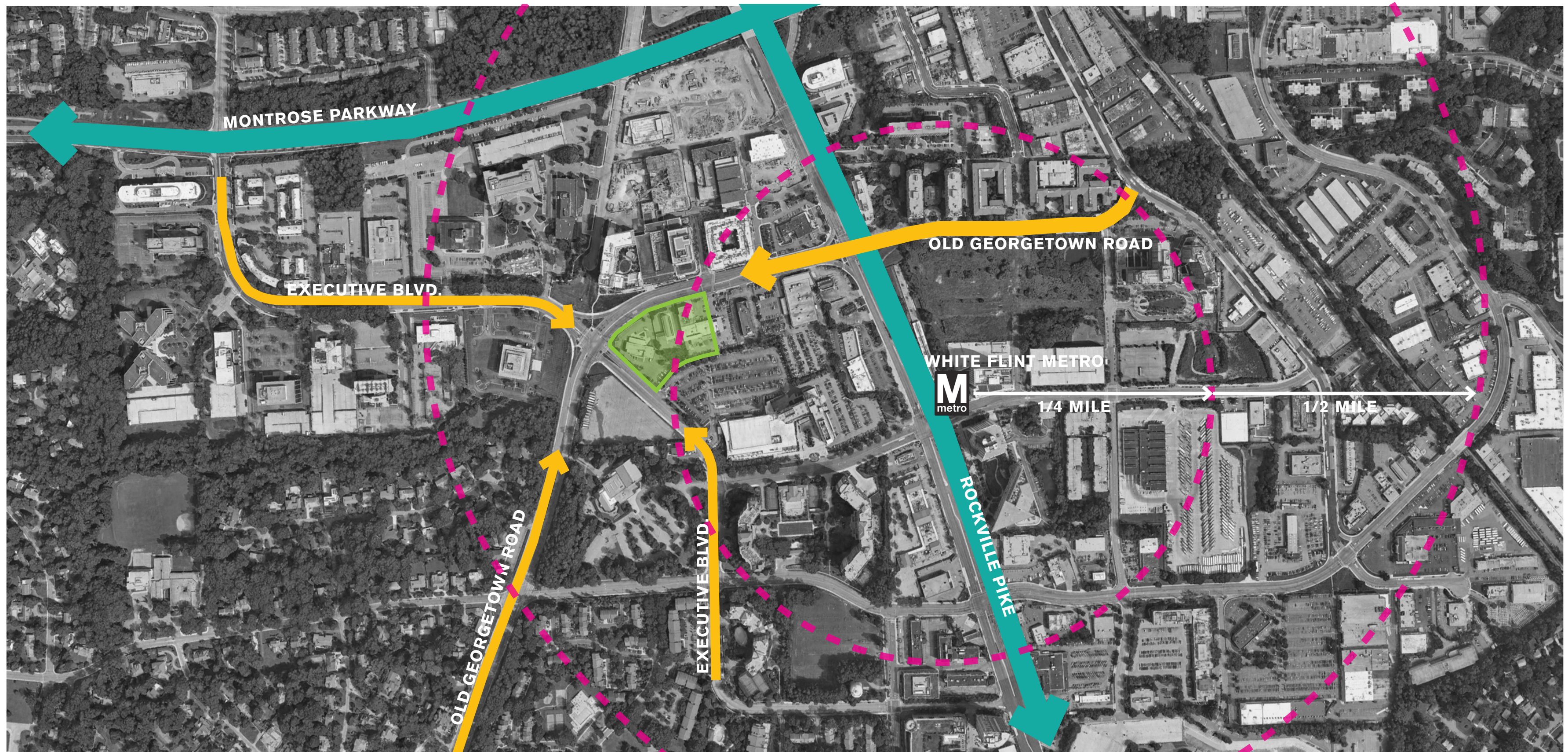


01/14/2019

GRAND PARK DEVELOPMENT



PGN ARCHITECTS
210 7TH ST. S.E. - SUITE 201
WASHINGTON DC 20003
PH: 202-822-5995
FAX: 202-822-0908



ACCESSIBILITY

SKETCH PLAN

01/14/2019

GRAND PARK DEVELOPMENT



PGN ARCHITECTS

210 7TH ST. S.E. - SUITE 201
WASHINGTON DC 20003
PH: 202-822-5995
FAX: 202-822-0908



PEDESTRIAN WALK

Outdoor retail space
Interactive space
Window shopping



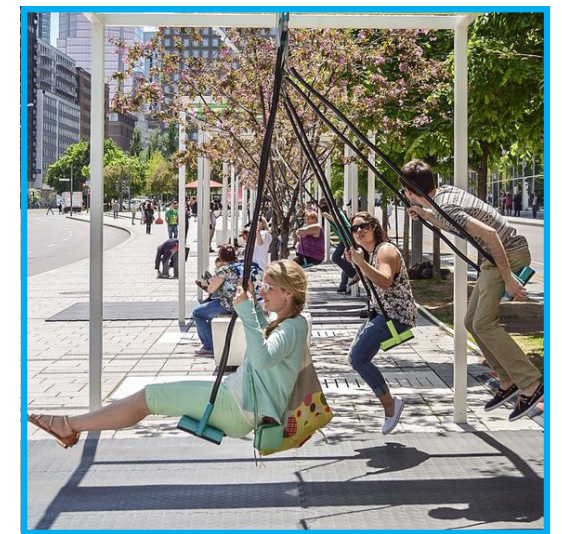
SIGNATURE CORNERS

Destinations
Interactive design
Connections



SOCIAL GATHERING

Intimate space
Secure
Calm



HARDSCAPE AND LANDSCAPE PLAN

SKETCH PLAN

GRAND PARK DEVELOPMENT

 **KILTROCK**


PGN
ARCHITECTS

01/14/2019

PGN ARCHITECTS

210 7TH ST. S.E. - SUITE 201
WASHINGTON DC 20003
PH: 202-822-5995
FAX: 202-822-0908



OPEN LAWN

Lawn space
Interactive space
Relaxation space



FOCAL FEATURES

Water feature
Fire Feature
Pavilion



SOCIAL GATHERING

Bosque of Trees
Games
Flexible seating



CIVIC GREEN

SKETCH PLAN

01/14/2019

GRAND PARK DEVELOPMENT

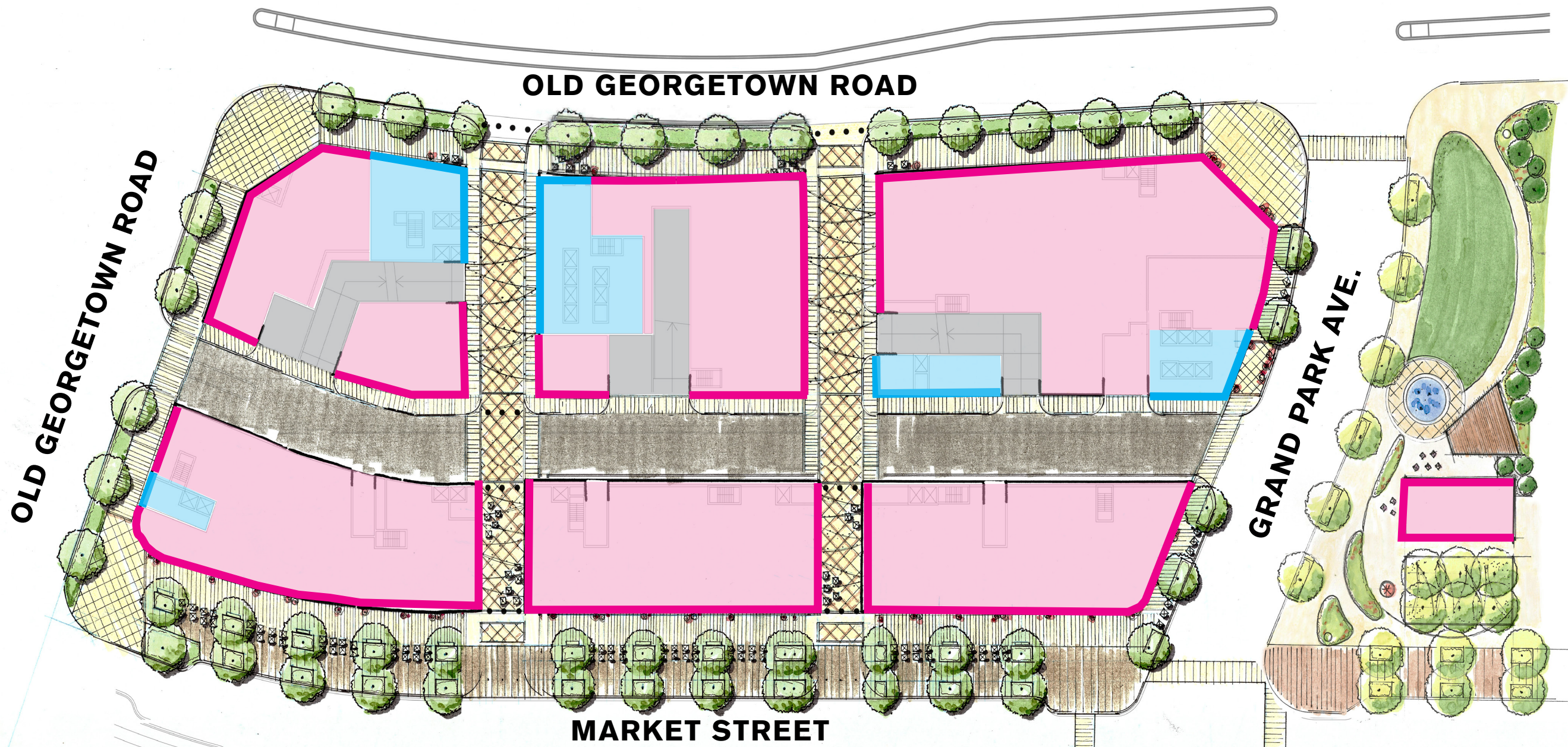
 **KILTROCK**


PGN
ARCHITECTS

PGN ARCHITECTS

210 7TH ST. S.E. - SUITE 201
WASHINGTON DC 20003
PH: 202-822-5995
FAX: 202-822-0908

- RETAIL FRONTAGE
- RETAIL NODE
- PARKING NODE
- RESIDENTIAL FRONTAGE
- RESIDENTIAL LOBBY



HARDSCAPE AND LANDSCAPE PLAN

SKETCH PLAN

01/14/2019

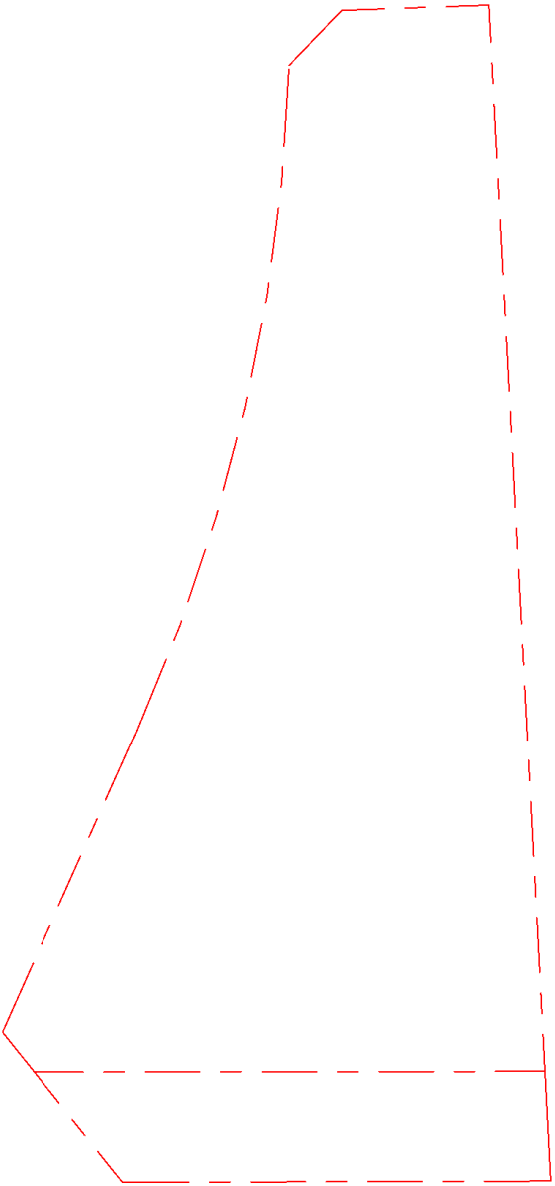
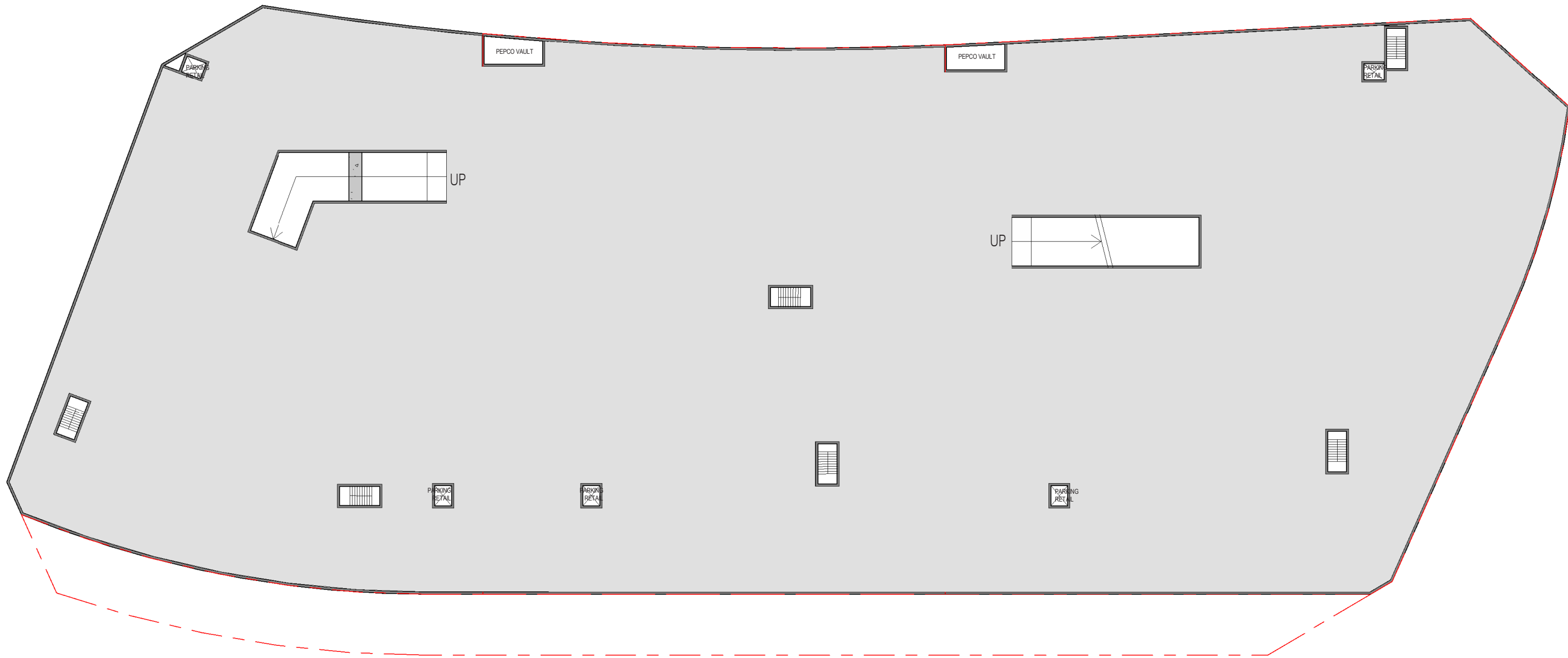
GRAND PARK DEVELOPMENT

KILTROCK

PGN
ARCHITECTS

PGN ARCHITECTS

210 7TH ST. S.E. - SUITE 201
WASHINGTON DC 20003
PH: 202-822-5995
FAX: 202-822-0908



COLOR LEGEND

- RESIDENTIAL
- AMENITY
- LOADING LANE
- NON-RESIDENTIAL
- PARKING
- TRASH



BELOW GRADE PARKING PLAN

SKETCH PLAN

01/14/2019

GRAND PARK DEVELOPMENT



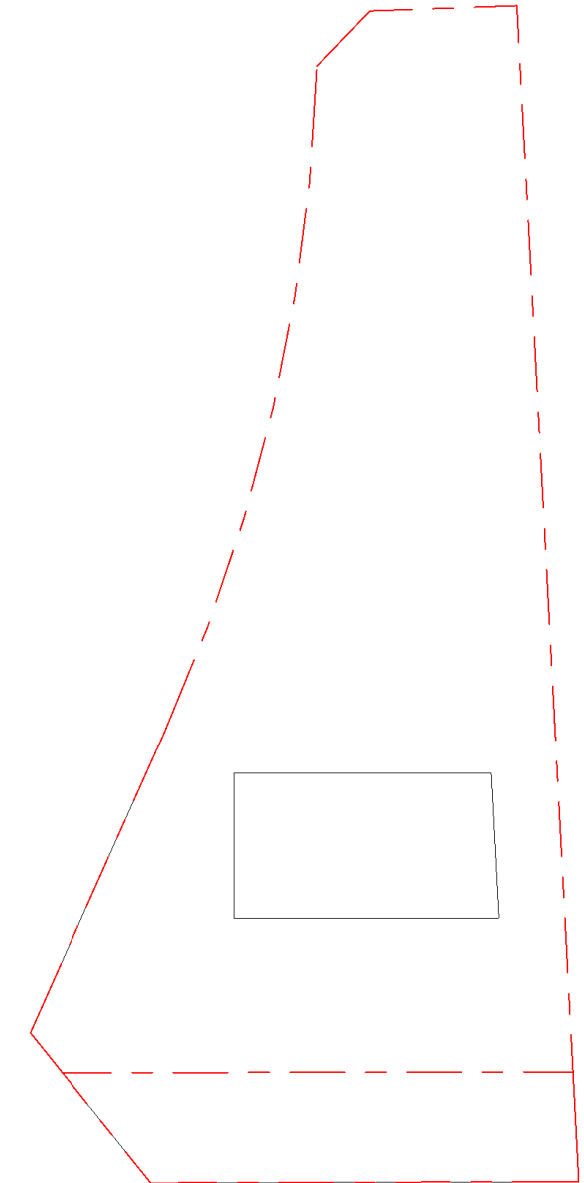
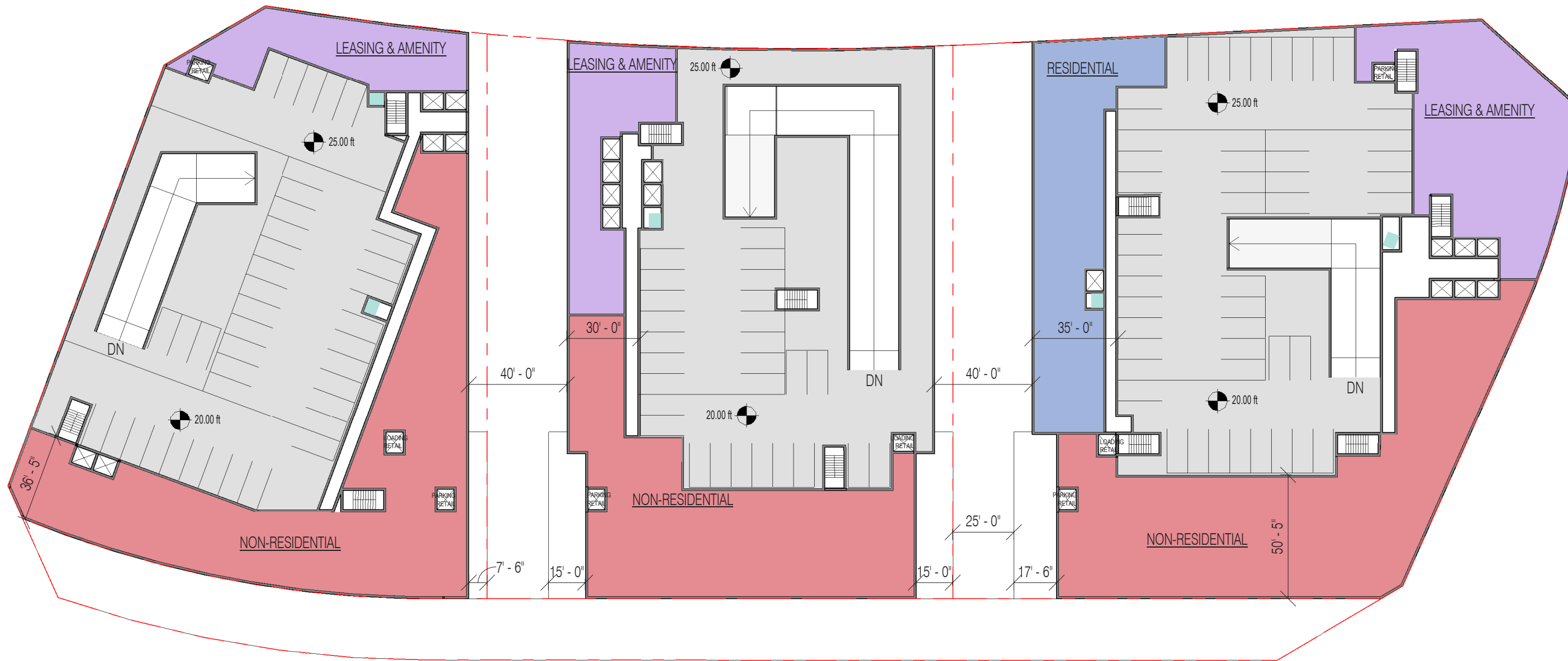
PGN ARCHITECTS
 210 7TH ST. S.E. - SUITE 201
 WASHINGTON DC 20003
 PH: 202-822-5995
 FAX: 202-822-0908



GRAND PARK DEVELOPMENT



PGN ARCHITECTS
 210 7TH ST. S.E. - SUITE 201
 WASHINGTON DC 20003
 PH: 202-822-5995
 FAX: 202-822-0908



COLOR LEGEND

 RESIDENTIAL	 AMENITY	 LOADING LANE
 NON-RESIDENTIAL	 PARKING	 TRASH



SECOND FLOOR PLAN

SKETCH PLAN

01/14/2019

GRAND PARK DEVELOPMENT



PGN ARCHITECTS

210 7TH ST. S.E. - SUITE 201
WASHINGTON DC 20003
PH: 202-822-5995
FAX: 202-822-0908



COLOR LEGEND

RESIDENTIAL	AMENITY	LOADING LANE
NON-RESIDENTIAL	PARKING	TRASH

THIRD FLOOR PLAN

SKETCH PLAN

01/14/2019

GRAND PARK DEVELOPMENT

KILTROCK

PGN
ARCHITECTS

PGN ARCHITECTS

210 7TH ST. S.E. - SUITE 201
WASHINGTON DC 20003
PH: 202-822-5995
FAX: 202-822-0908



COLOR LEGEND

 RESIDENTIAL	 AMENITY	 LOADING LANE
 NON-RESIDENTIAL	 PARKING	 TRASH

FOURTH & FIFTH FLOOR PLAN

SKETCH PLAN

01/14/2019

GRAND PARK DEVELOPMENT

KILTROCK

PGN
ARCHITECTS

PGN ARCHITECTS

210 7TH ST. S.E. - SUITE 201
WASHINGTON DC 20003
PH: 202-822-5995
FAX: 202-822-0908



COLOR LEGEND

- | | | |
|---|---|---|
| RESIDENTIAL | AMENITY | LOADING LANE |
| NON-RESIDENTIAL | PARKING | TRASH |

SIXTH FLOOR PLAN

SKETCH PLAN

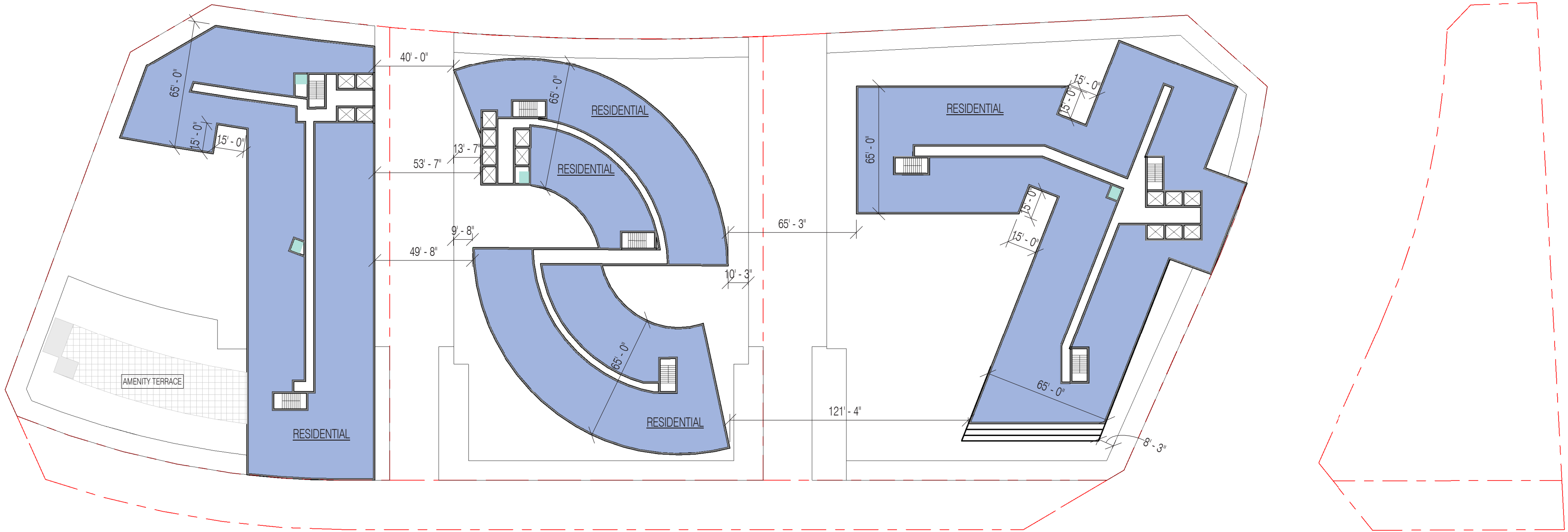
GRAND PARK DEVELOPMENT



PGN ARCHITECTS

210 7TH ST. S.E. - SUITE 201
 WASHINGTON DC 20003
 PH: 202-822-5995
 FAX: 202-822-0908

01/14/2019



COLOR LEGEND

■ RESIDENTIAL	■ MECH. AREA	■ PAVING
■ NON-RESIDENTIAL	■ TRASH	■ STAIR / ELEVATOR / TRASH CHUTE OVER-RUN

ELEVENTH FLOOR PLAN

SKETCH PLAN

01/14/2019

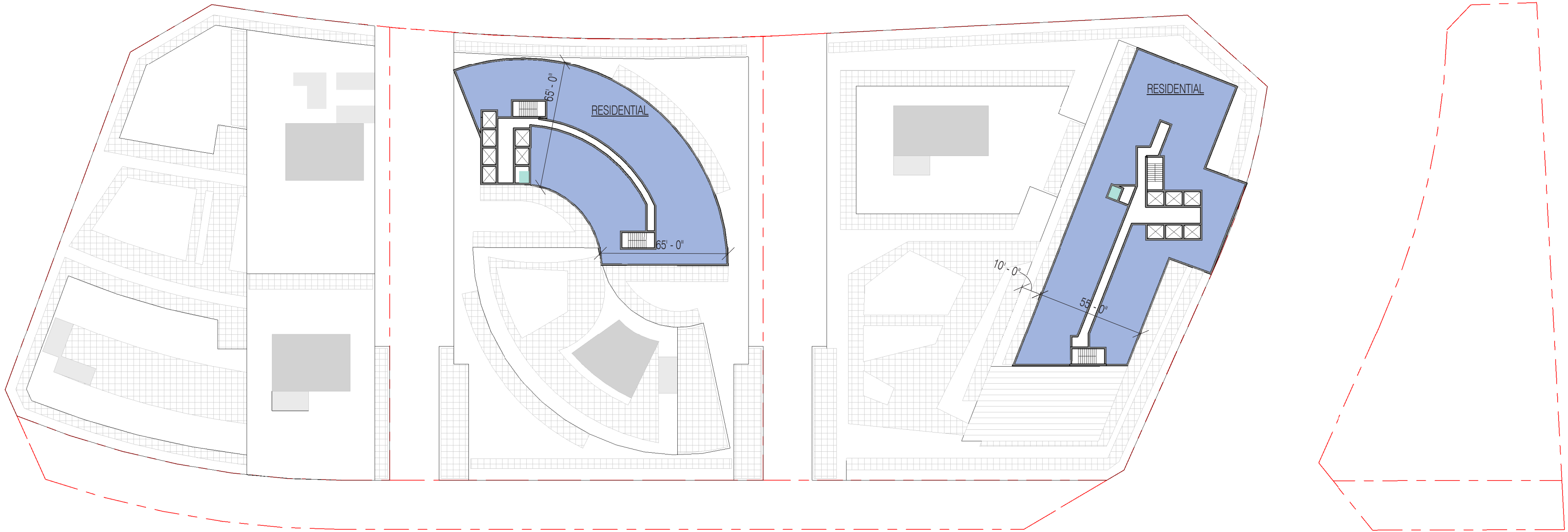
GRAND PARK DEVELOPMENT

KILTROCK

PGN
ARCHITECTS

PGN ARCHITECTS

210 7TH ST. S.E. - SUITE 201
WASHINGTON DC 20003
PH: 202-822-5995
FAX: 202-822-0908



COLOR LEGEND

RESIDENTIAL	MECH. AREA	PAVING
NON-RESIDENTIAL	STAIR / ELEVATOR / TRASH CHUTE OVER-RUN	
TRASH		



TWENTY THIRD FLOOR

SKETCH PLAN

01/14/2019

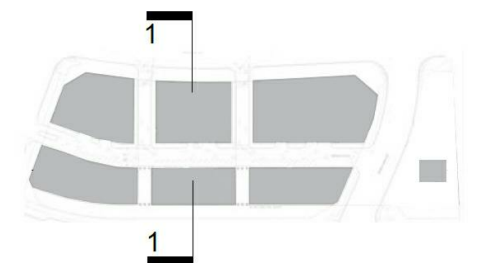
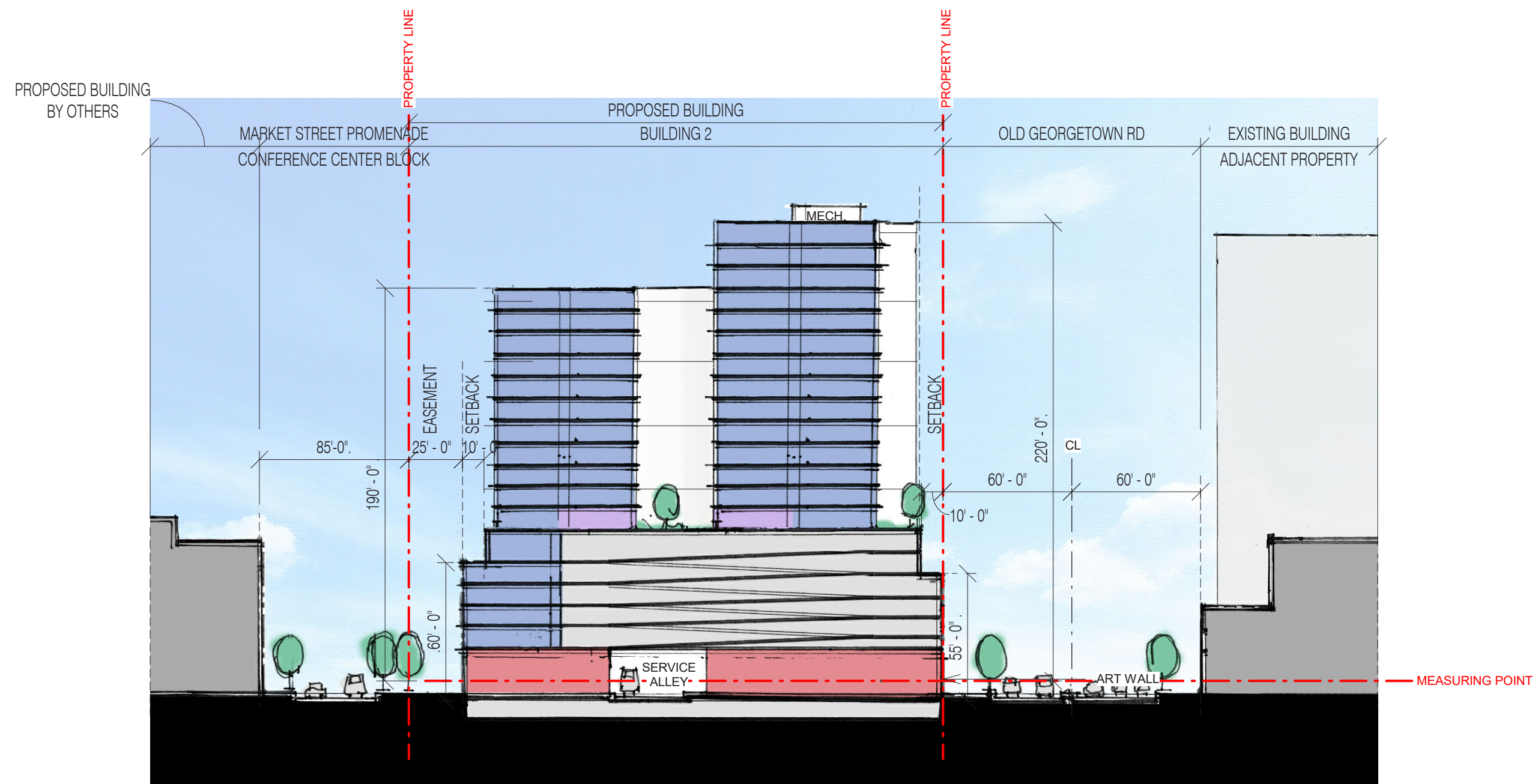
GRAND PARK DEVELOPMENT

 **KILTROCK**

 **PGN**
ARCHITECTS

PGN ARCHITECTS

210 7TH ST. S.E. - SUITE 201
WASHINGTON DC 20003
PH: 202-822-5995
FAX: 202-822-0908



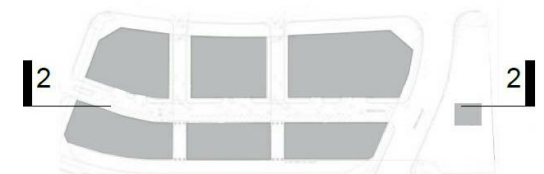
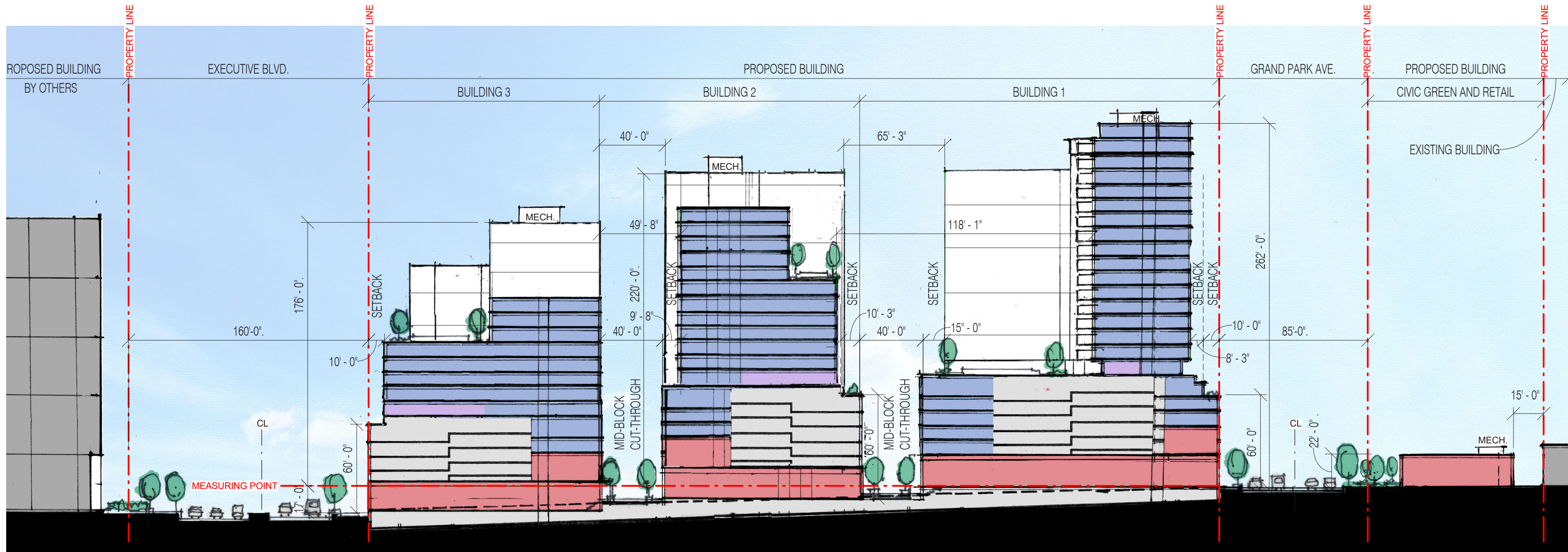
SECTION 1-1
GRAND PARK DEVELOPMENT

SKETCH PLAN

01/14/2019



PGN ARCHITECTS
210 7TH ST. S.E. - SUITE 201
WASHINGTON DC 20003
PH: 202-822-5995
FAX: 202-822-0908



SECTION 2-2
GRAND PARK DEVELOPMENT

SKETCH PLAN

01/14/2019



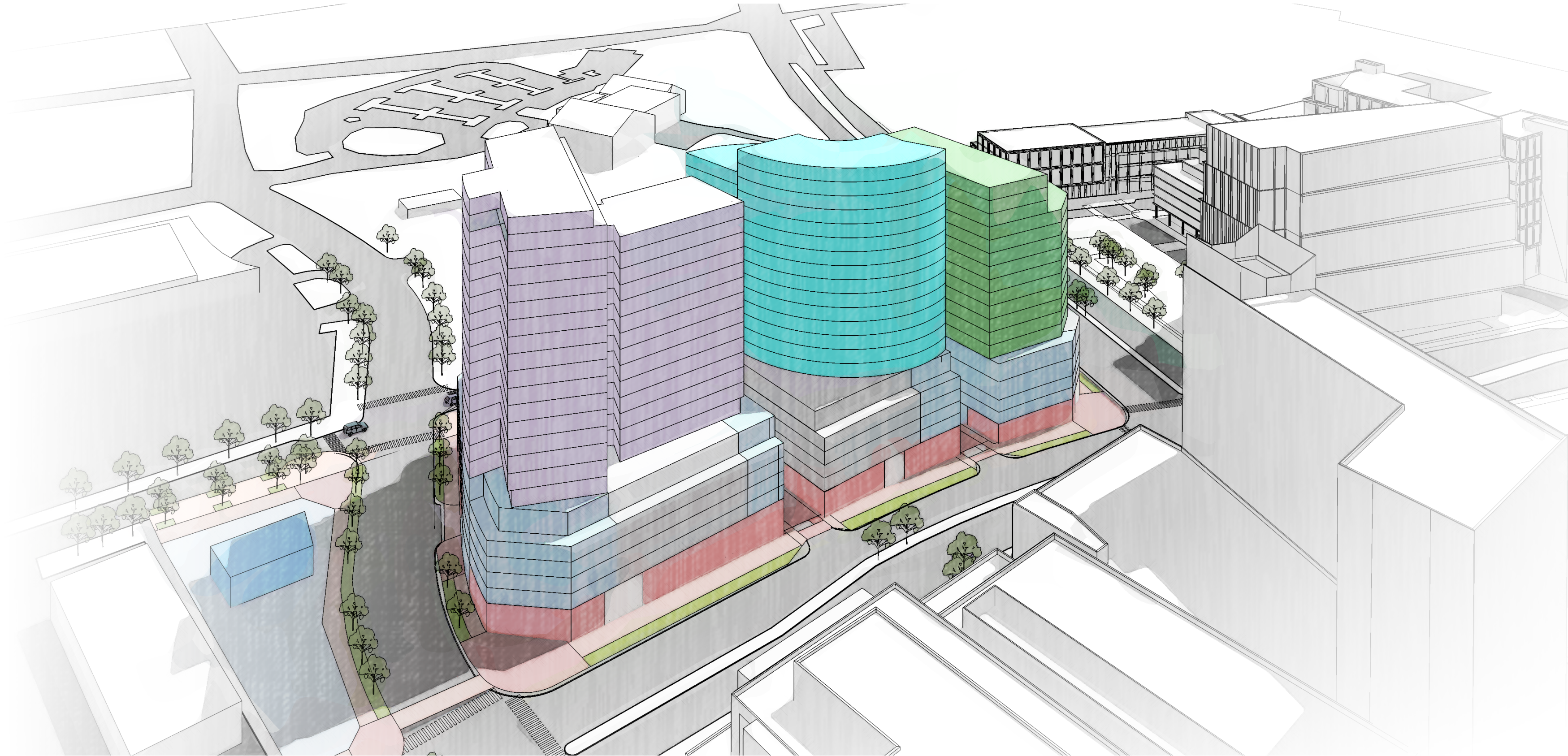
PGN ARCHITECTS
210 7TH ST. S.E. - SUITE 201
WASHINGTON DC 20003
PH: 202-822-5995
FAX: 202-822-0908



BUILDING COMPOSITION
GRAND PARK DEVELOPMENT

SKETCH PLAN

01/14/2019



BUILDING COMPOSITION

SKETCH PLAN

01/14/2019

GRAND PARK DEVELOPMENT



PGN ARCHITECTS

210 7TH ST. S.E. - SUITE 201
WASHINGTON DC 20003
PH: 202-822-5995
FAX: 202-822-0908