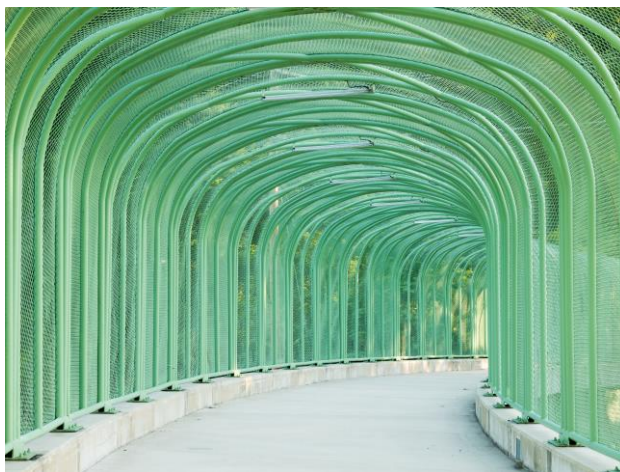




# VEIRS MILL

*Preliminary Staff Recommendations*



## **MEETING AGENDA**

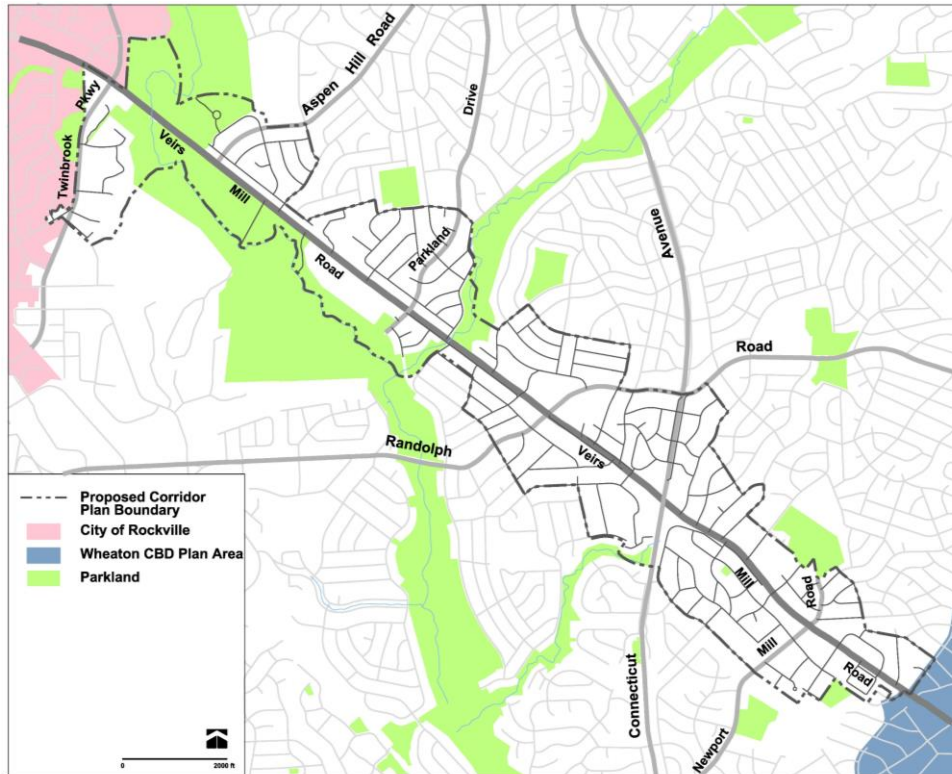
- Plan Background and Context
- Conceptual Plan Approach and Framework
  - Corridor Wide
  - District Focused
  - Short-Term and Long-Term
- Brief Overview of Staff Recommendations
  - Land Use and Zoning
  - Urban Design
  - Transportation
  - Parks, Trails and Open Spaces
  - Community Facilities
  - Environment
- Open House Style Discussions by Topic Area





# VEIRS MILL CORRIDOR MASTER PLAN

## PLAN AREA TODAY







## PLAN BACKGROUND AND CONTEXT



Montgomery County  
**RAPID TRANSIT**  
MD 586

### DRAFT Corridor Study Report

## MD 586 / Veirs Mill Road Bus Rapid Transit Study

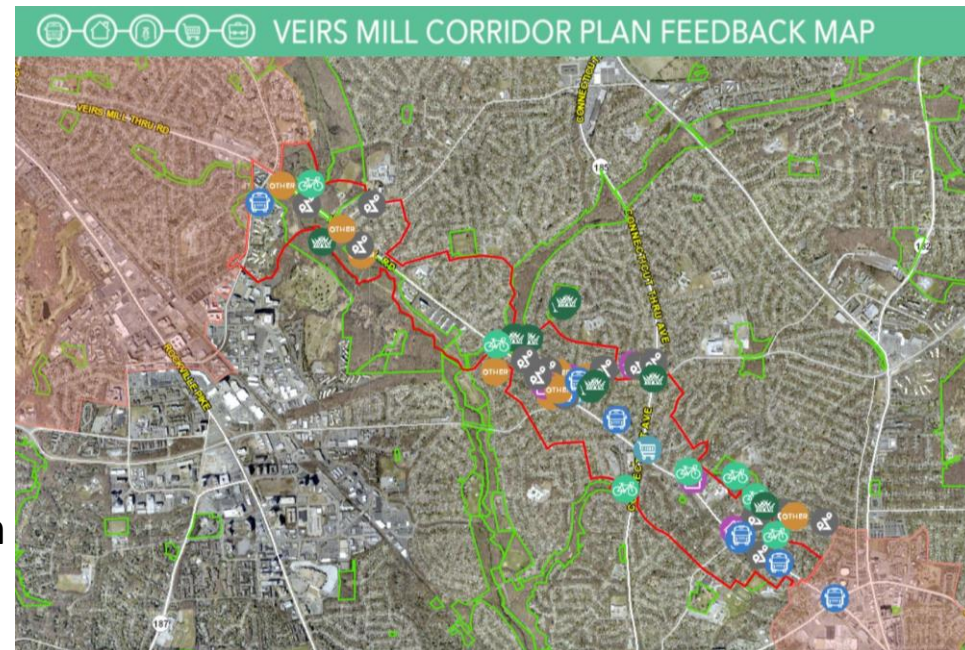
September 2016





## COMMUNITY OUTREACH

- Community Meetings:
  - 2/22: Community Kick-Off Meeting
  - 3/29: Visioning / Community Priorities
  - 5/15: Recreation, Parks and Potential Development
  - 10/4: Plan Vision and Approach
  - 10/24: Veirs Mill Vision Zero Initiative
- Neighborhood Events:
  - Stonemill Square Outreach
  - Taste of Wheaton
  - Wheaton North Event
  - Viers Mill Baptist Church Carnival
  - Holiday Park Outreach
  - National Night Out
  - Connecticut Avenue Civic Association
  - Wheaton Arts Parade and Festival







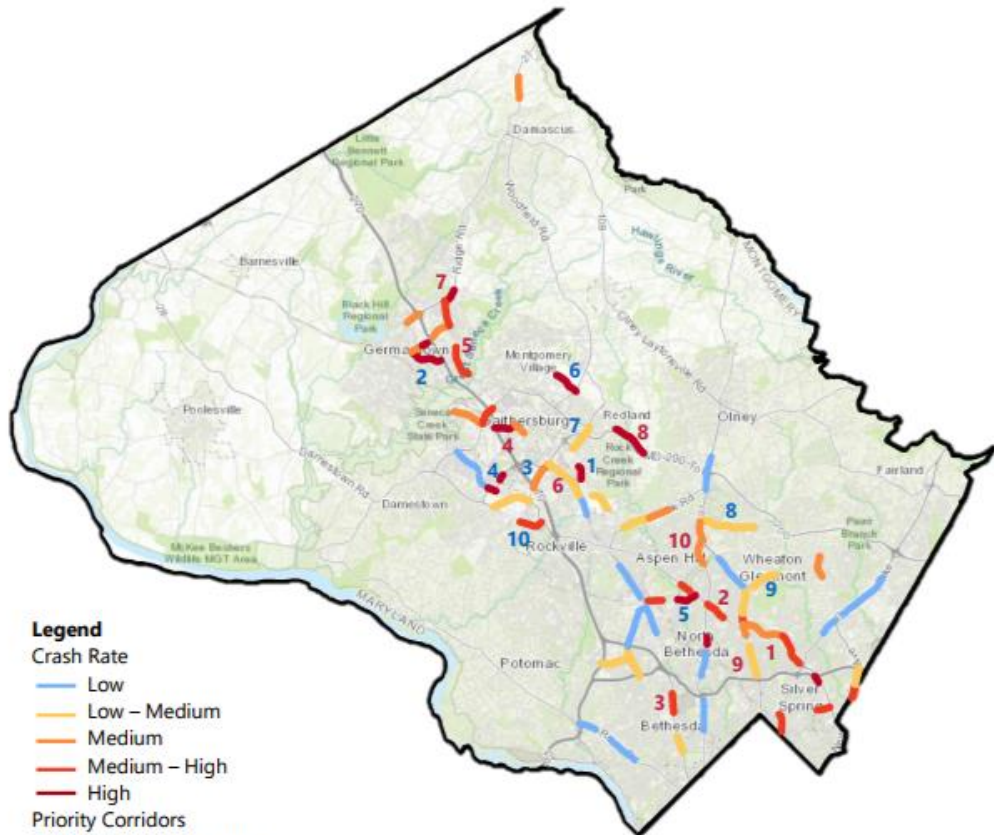
## PLAN BACKGROUND AND CONTEXT







## PLAN APPROACH AND FRAMEWORK



### Legend

#### Crash Rate

- Low
- Low – Medium
- Medium
- Medium – High
- High

#### Priority Corridors

- 1-10 County Maintained
- 1-10 State Maintained

Basemap Sources: Esri, HERE, DeLorme, Intermap, increment P Corp., GEBCO, USGS, FAO, NPS, NRCAN, Geobase, IGN, Kadaster NL, Ordnance Survey, Esri Japan, METI, Esri China (Hong Kong), swisstopo, MapmyIndia, © OpenStreetMap contributors, and the GIS User Community



**OUR PLAN TO ELIMINATE FATALITIES AND SEVERE INJURIES ON OUR ROADS BY 2030**

**TWO-YEAR ACTION PLAN • NOV 2017**





## PLAN VISION

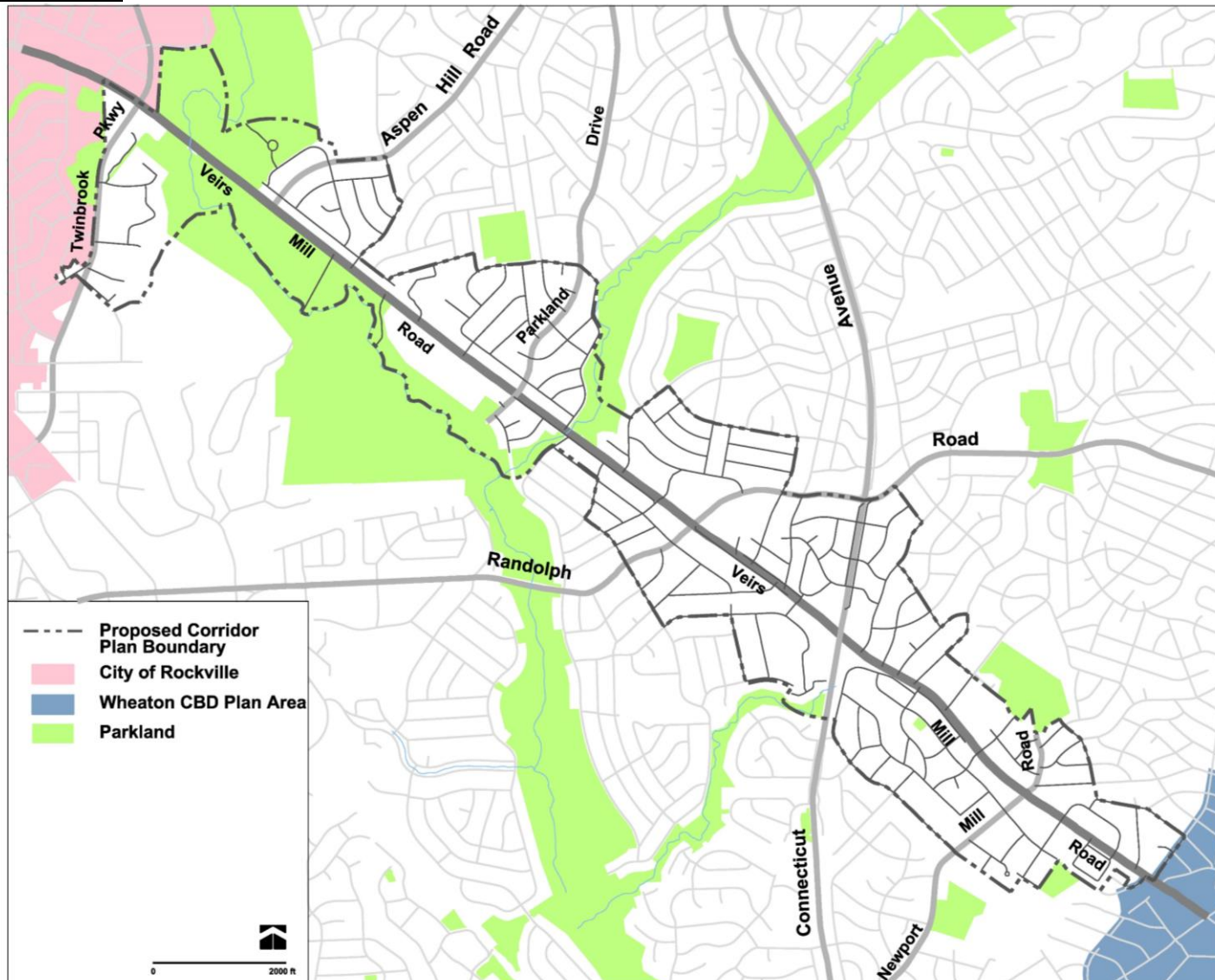
- Preserve and strengthen the Veirs Mill Corridor communities by enhancing existing community resources, increasing connectivity and promoting safety in the public realm.







## PLAN FRAMEWORK







## NEWPORT MILL DISTRICT



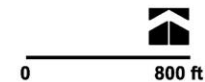




## CONNECTICUT / RANDOLPH DISTRICT



- Proposed Corridor Plan Boundary
- Parkland







## ROBINDALE DISTRICT

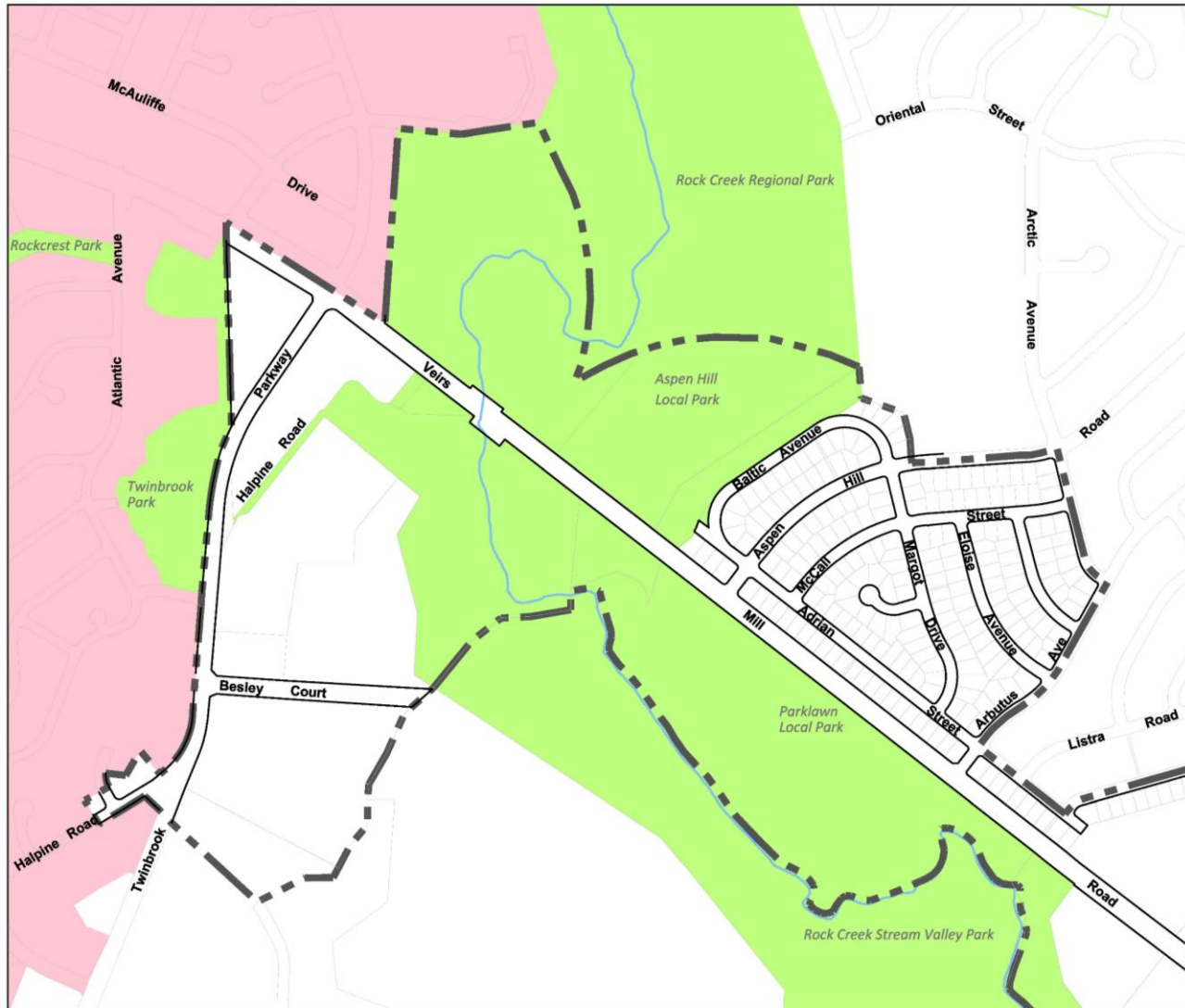


- Proposed Corridor Plan Boundary
- Parkland

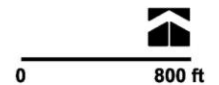




## TWINBROOK DISTRICT



- Proposed Corridor Plan Boundary
- City of Rockville
- Parkland





## **LAND USE AND ZONING RECOMMENDATIONS**

- Preserve and maintain residential scale and character
- Retain majority of existing multi-family residential development
- Rezone select properties near the commercial center, Metrorail or future Bus Rapid Transit Stations
- Encourage partnerships to advance neighborhood development and revitalization.





## URBAN DESIGN RECOMMENDATIONS

- Implement a complete streets approach to create a safe, walkable and bicycle-friendly environment
- Promote short and long-term improvements on commercial properties to create neighborhood serving centers
- Utilize BRT station locations and frontage road areas to enhance neighborhood identity
- Maintain prevailing residential scale, but introduce higher density residential uses at strategic locations to support walkability and transit





## **TRANSPORTATION RECOMMENDATIONS**

- Reduce speed and improve safety for all users of Veirs Mill Road
- Improve connectivity by introducing pedestrian and bicycle infrastructure along Veirs Mill Road and on residential streets which connect to community facilities
- Create new and improve existing pedestrian crossings
- Support existing buses and future bus rapid transit
- Eliminate / modify right-turn lanes, channelized right-turns and double-left turns



## **PARKS, TRAILS AND OPEN SPACE RECOMMENDATIONS**

- Improve the visual presence of community destinations (parks, trails, open space and community facilities) through enhanced connections and wayfinding
- Introduce Neighborhood Green Urban Parks with new development at commercial areas and areas near transit
- Redesign Parklawn Local Park to include additional park uses, improve the park frontage, and improve the relationship with Veirs Mill Road
- Improve the Matthew Henson trail crossing and identify opportunities to connect to Matthew Henson State Park from the east





## **COMMUNITY FACILITIES RECOMMENDATIONS**

- Improve connectivity between transit and community facilities
- Provide an improved gateway to the Holiday Park Senior Center
- Expand the services provided at the Holiday Park Senior Center to accommodate activities for youth or other community members





## ENVIRONMENTAL RECOMMENDATIONS

- Retrofit underutilized right of way and private institutions / commercial properties with stormwater management
- Integrate innovative stormwater management into design of bus rapid transit lanes and stations.
- Promote transit with improved pedestrian connections





## **NEXT STEPS**

- January: Planning Board – Preliminary Recommendations
- February: Planning Board – Working Draft of Master Plan
- March: Planning Board Public Hearing
- March - April: Planning Board Worksessions
- April: Approval of Planning Board Draft Master Plan
- June: County Council Public Hearing



## **CONNECT WITH US**

- Staff Contacts

Jessica McVary

Phone: 301-495-4723

Email: [Jessica.McVary@montgomeryplanning.org](mailto:Jessica.McVary@montgomeryplanning.org)

Nancy Sturgeon

Phone: 301-495-1308

Email: [Nancy.Sturgeon@montgomeryplanning.org](mailto:Nancy.Sturgeon@montgomeryplanning.org)

- Project Webpage: [www.montgomeryplanning.org/veirsmill](http://www.montgomeryplanning.org/veirsmill)
- Twitter: @montgomeryplans
- Facebook: Facebook.com/montgomeryplanning