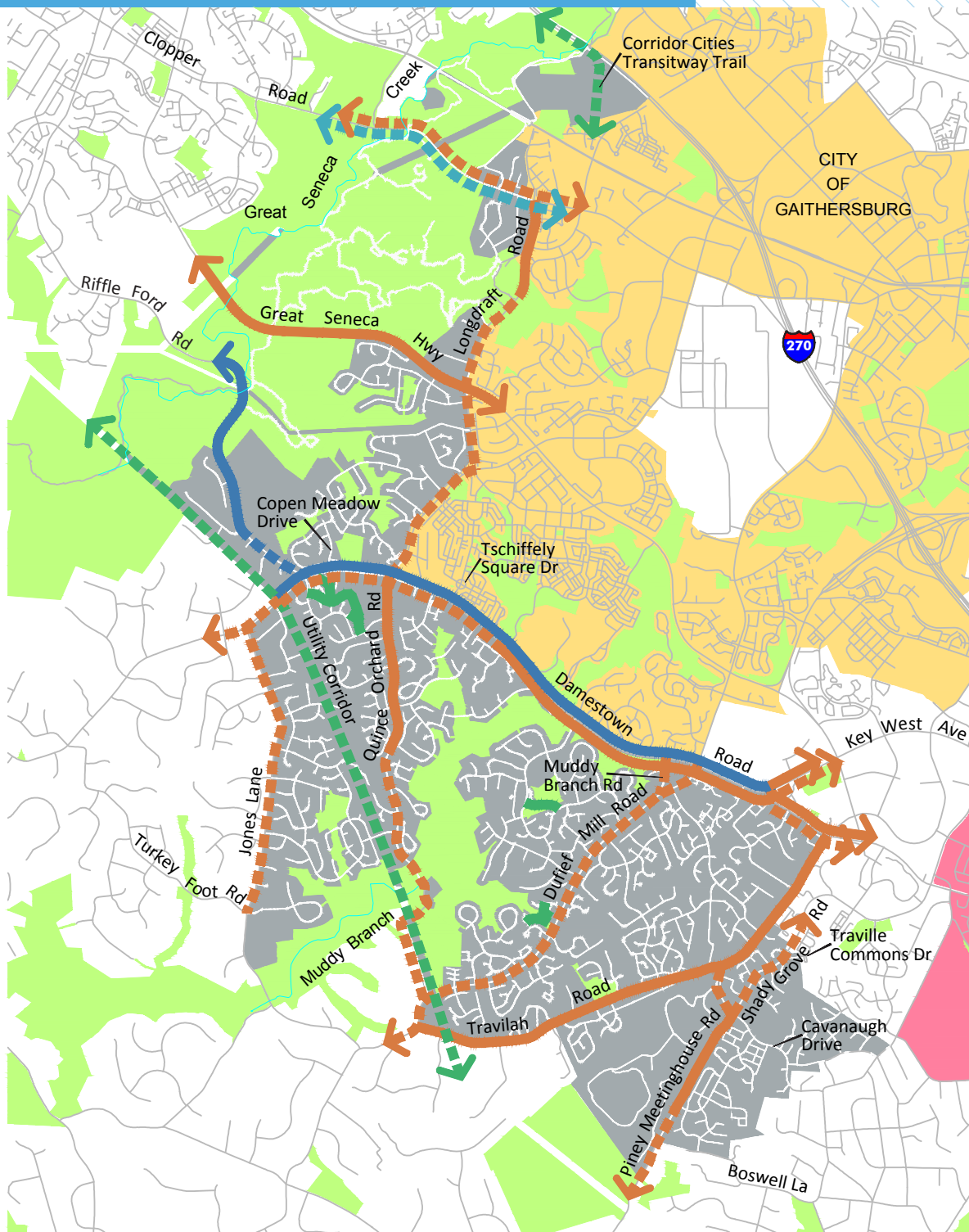


# NORTH POTOMAC



Policy Area

Parkland

City of Gaithersburg

City of Rockville

Existing

Proposed

Trails

Separated Bikeways

Striped Bikeways

Bikeable Shoulders

Trails

Separated Bikeways

Striped Bikeways

Bikeable Shoulders

Note: White lines represent non-master planned bikeways

0 4500'

BIKEWAY	FROM	TO	FACILITY TYPE	BIKEWAY TYPE
Clopper Rd	Great Seneca Creek	Longdraft Rd	Separated Bikeway and Bikeable Shoulders	Sidepath (West Side) and Bikeable Shoulders
Corridor Cities Transitway Trail	Great Seneca Creek	City of Gaithersburg	Trail	Off-Street Trail
Darnestown Rd	Utility Corridor Trail	Copen Meadow Dr	Separated Bikeway and Striped Bikeway	Sidepath (North Side) and Conventional Bike Lanes
	Copen Meadow Dr	Tschiffely Square Rd	Separated Bikeway and Striped Bikeway	Separated Bike Lanes (Two-Way, North Side) and Conventional Bike Lanes
	Tschiffely Square Rd	Key West Ave	Separated Bikeway and Striped Bikeway	Sidepath (North Side) and Conventional Bike Lanes
	Key West Ave	Travilah Rd	Separated Bikeway	Sidepath (Both Sides)
Dufief Mill Rd	Darnestown Rd	Travilah Rd	Separated Bikeway	Sidepath (East Side)
Great Seneca Hwy	Great Seneca Creek	Longdraft Rd	Separated Bikeway	Sidepath (East Side)
Jones La	Darnestown Rd	Turkey Foot Rd	Separated Bikeway	Sidepath (West Side)
Longdraft Rd	Clopper Rd	Quince Orchard Rd	Separated Bikeway	Sidepath (West Side)
Muddy Branch Rd	Darnestown Rd	Dufief Mill Rd	Separated Bikeway	Sidepath (East Side)
Piney Meetinghouse Rd	Travilah Rd	Boswell La	Separated Bikeway	Sidepath (East Side)
Quince Orchard Rd	Longdraft Rd	Darnestown Rd	Separated Bikeway	Sidepath (Both Sides)
	Darnestown Rd	Dufief Mill Rd	Separated Bikeway	Sidepath (West Side)
Riffle Ford Rd	Great Seneca Creek	Darnestown Rd	Striped Bikeway	Buffered Bike Lanes
Shady Grove Rd	Traville Commons Dr	Cavanaugh Dr	Separated Bikeway	Sidepath (West Side)
Travilah Rd	Darnestown Rd	Dufief Mill Rd	Separated Bikeway	Sidepath (West Side)
Utility Corridor	Great Seneca Creek	Travilah Rd	Trail	Off-Street Trail