



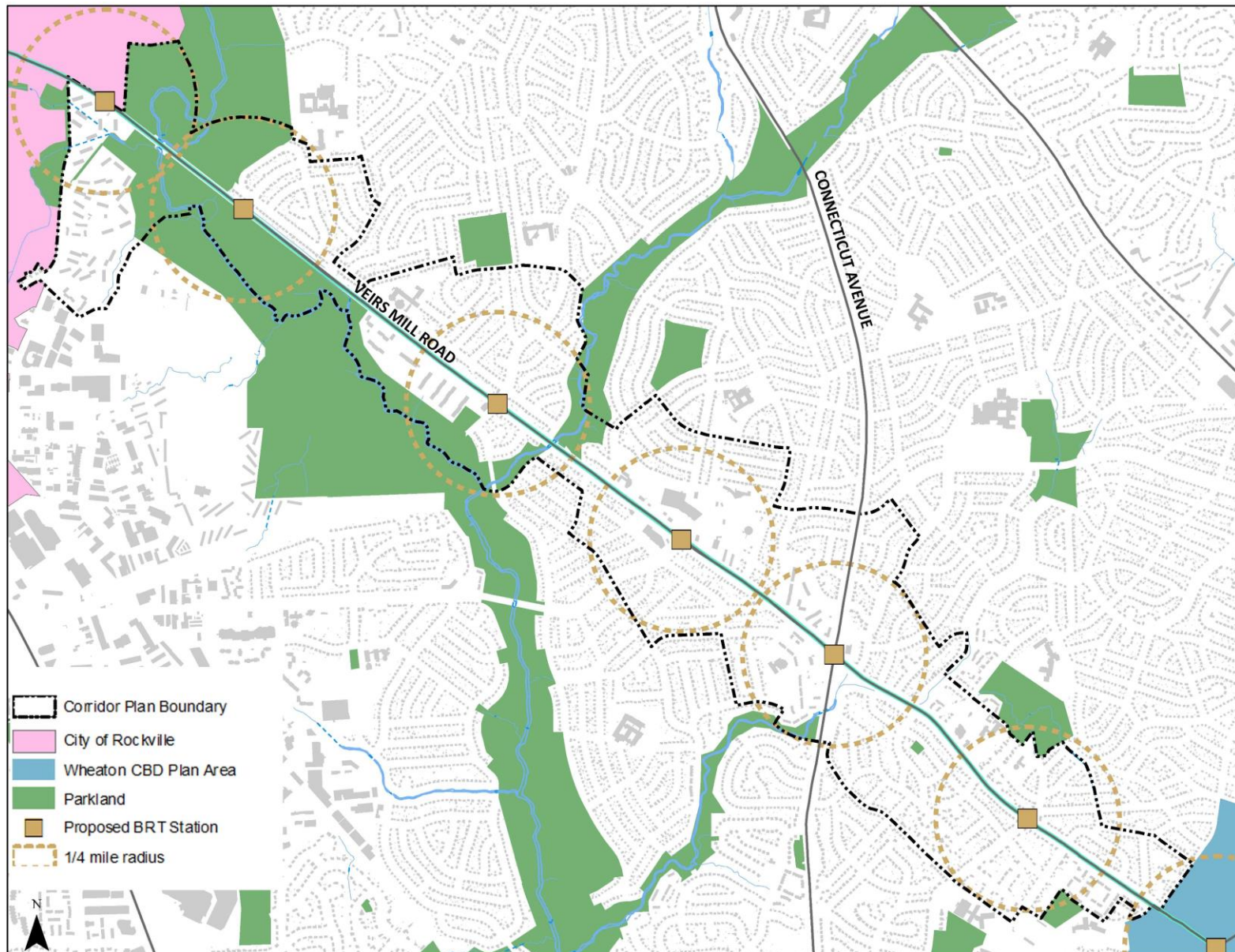
VEIRS MILL

CONNECTING COMMUNITIES





VEIRS MILL CORRIDOR MASTER PLAN

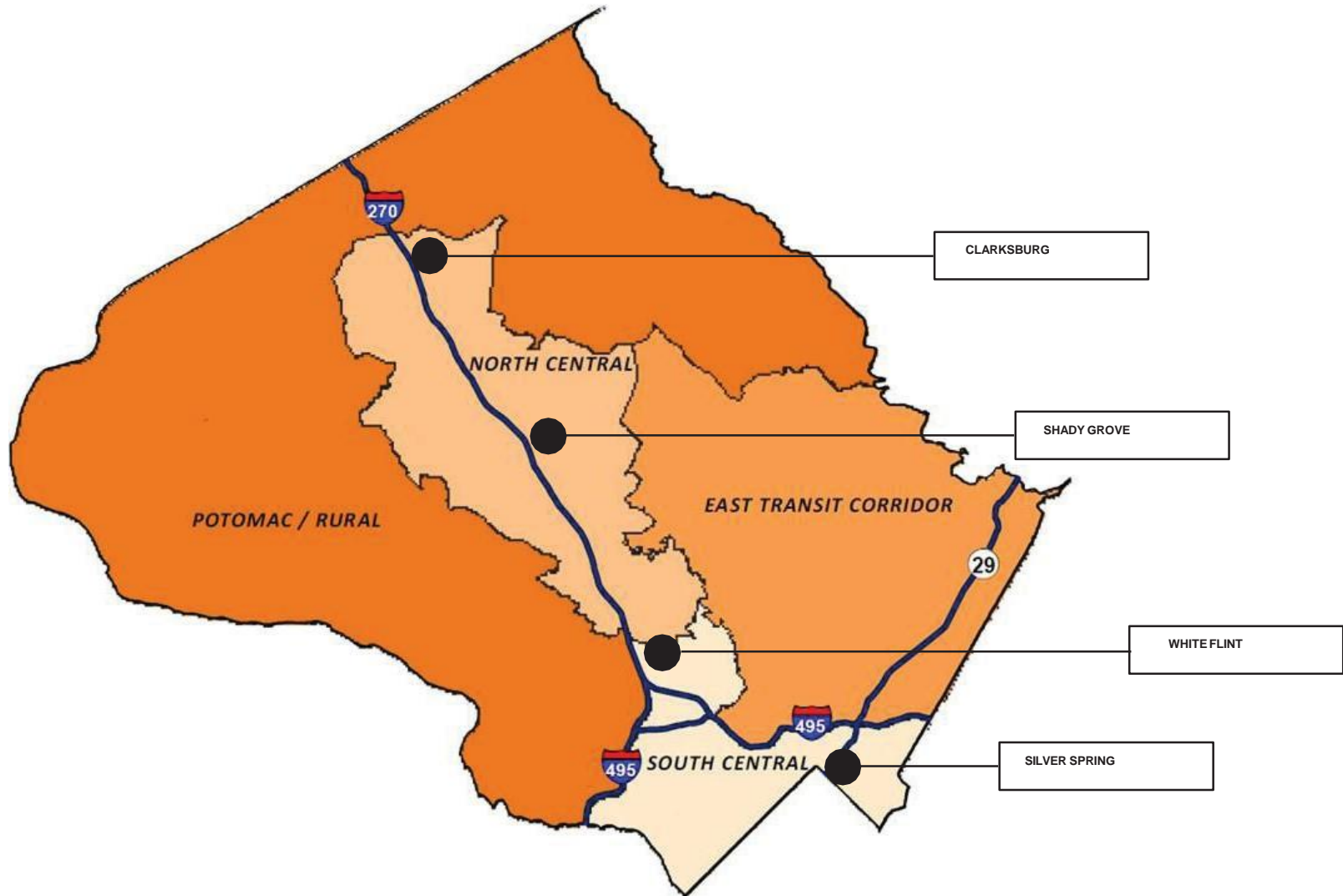


AGENDA

- 7:00 p.m. Welcome and Opening Remarks
- 7:05 p.m. Montgomery County Department of Recreation
 - Existing Recreational Facilities and Programs
 - Planned Facilities
- 7:20 p.m. City of Rockville Department of Recreation
 - Existing Recreational Facilities
- 7:30 p.m. Department of Parks
 - Parks, Recreation and Open Space Plan
 - Park Planning Process and Existing Conditions
- 7:45 p.m. Questions on Recreation and Parks
- 8:00 p.m. Department of General Services – Disposition Process for Public Property
- 8:15 p.m. Halpine View – History and Potential Future Redevelopment
- 8:45 p.m. Questions and Next Steps



MONTGOMERY COUNTY RECREATION FACILITY DEVELOPMENT PLAN 2010-2030





MONTGOMERY COUNTY RECREATION FACILITY DEVELOPMENT PLAN 2010-2030

- **Current Ongoing CIP Projects**

- White Oak CRC
- Neighborhood Recreation Center (NRC) Construction
- Plum Gar NRC Renovation
- Scotland NRC Renovation
- Ross Boddy NRC Renovation
- Good Hope NRC Renovation
- North Potomac CRC



- **Facility Planning / Site Evaluation Projects**

- Western Outdoor Pool Renovation
- Wheaton Library and CRC
- Clarksburg CR and AC (Community Recreation and Aquatic Center)
- Recreation Facility Modernization
 - Schweinhaut Senior Center
 - Clara Barton NRC
 - Upper County CRC
 - Bauer CAC
- White Flint CR and AC (Wall Park w/ MAC serving the North Bethesda region)
- Silver Spring CR and AC
- Shady Grove CR and AC (Aquatic Needs Assessment)
- East Germantown CRC





MONTGOMERY COUNTY RECREATION FACILITY DEVELOPMENT PLAN 2010-2030

- Facility Planning / Site Evaluation Projects (Continued)

- **Needs Assessment, Site Selection and Facility Planning**

- Sandy Spring CR and AC
- Western Co CR and AC
- Kensington CRC
- Kemp Mill CRC

- **Facility Modernization**

- Holiday Park SC
- Longwood CRC
- Germantown CRC and Pool
- Lawton CRC
- Potomac CRC
- Olney AC
- MLK AC
- Coffield CRC
- Glenmont Pool
- Long Branch CRC and Pool
- East County CRC
- Bethesda Pool
- Praisner CRC
- Damascus CRC
- Wisconsin Place CRC





PLANNED RECREATIONAL FACILITIES – WHEATON LIBRARY AND REC CENTER



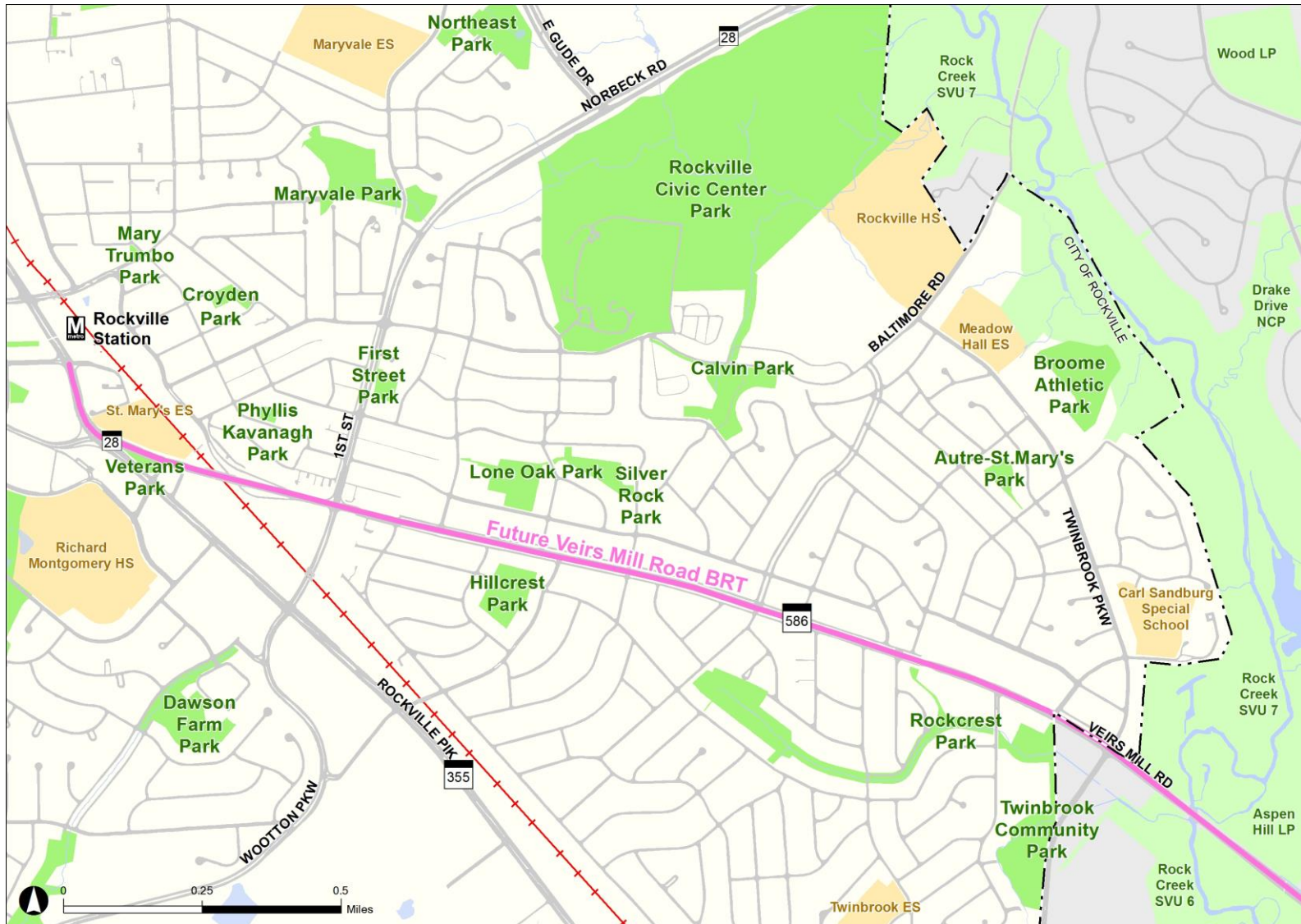


PLANNED RECREATIONAL FACILITIES – WHEATON LIBRARY AND REC CENTER





CITY OF ROCKVILLE RECREATION FACILITIES



Park Planning & Stewardship Division
Park and Trail Planning Section



2017 PROS PLAN UPDATE

PARK, RECREATION, & OPEN SPACE PLAN

M-NCPPC Montgomery Parks
Brooke Farquhar, Supervisor, Park and Trail Planning



Why Parks, Recreation, and Open Spaces?

Meet leisure needs of residents and employees

Build a strong sense of community

Provide enough open space and natural resources for future generations

Because land and funding is limited, we must utilize our existing lands and facilities to their maximum potential



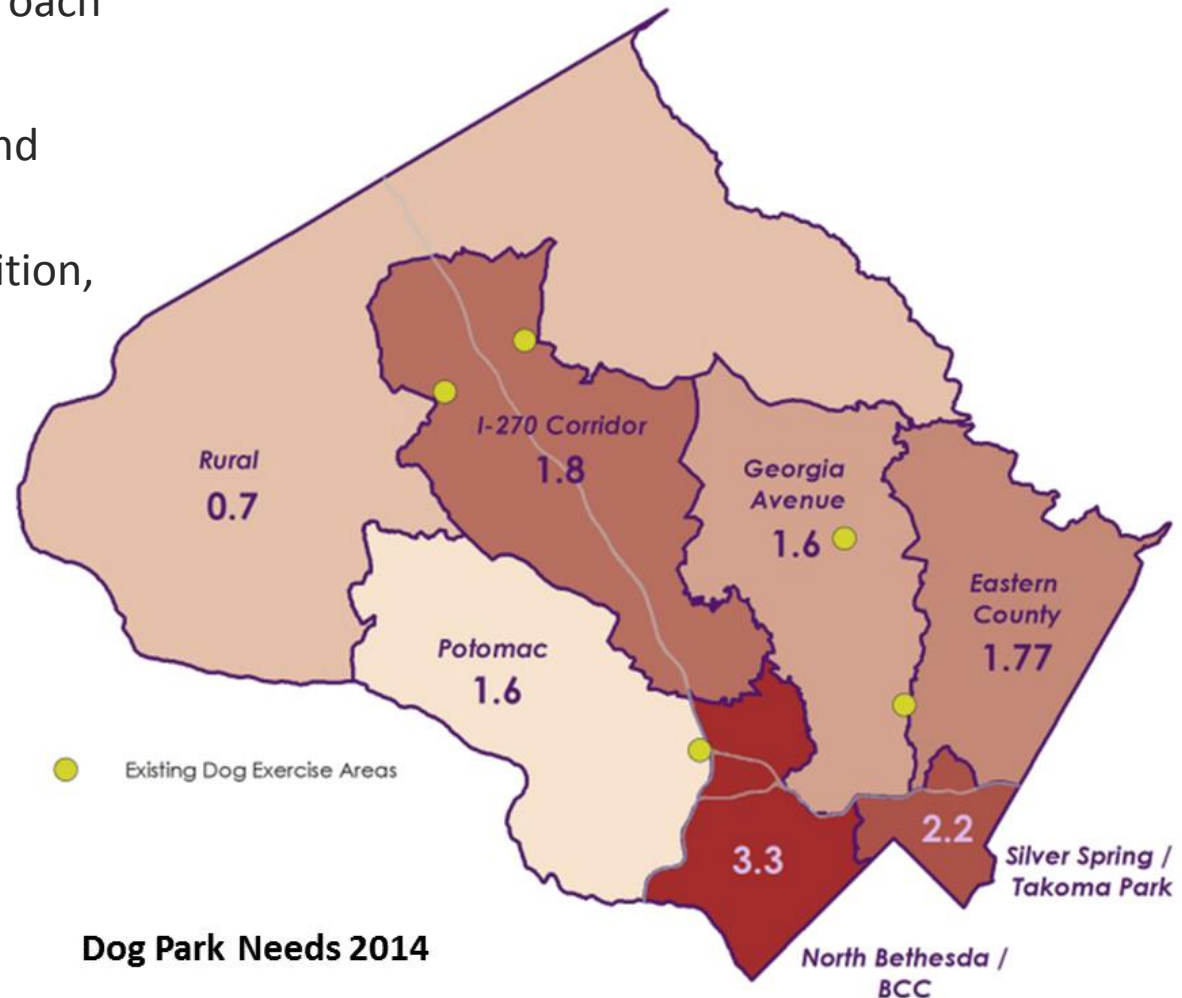
The Changing Role of Parks

In the mid-1980's, we began the transition away from a growing suburban to a more urban county .

- 1930 to 40's - Stream Valley Parks: unprecedented expansion of park facilities in the major stream valleys
- 1950 to 60's - Regional Parks and Athletic Fields: services to the growing suburban population + drive to parks + wedge and corridors plan
- 1970's - Focus on Neighborhood Parks: daily services to smaller social structures; Urban Parks as buffer from commercial areas; adequate public facilities ordinance; environmental stewardship
- 1980's - Agricultural Reserve: preservation of farmland and growth management
- 1990 and 2000's: Smart Growth: a return to urban areas, Legacy Open Space Plan: preservation of the best of the best
- 2010's: 2012 PROS, Urban Parks Guidelines, Vision 2030: parks in growing urban areas and redefinition of urban park type
- Today : Energized Public Spaces FMP: parks + public spaces implementation of the right parks in the right places

Purpose of the PROS Plan

- Helps deliver the “right parks in the right places”, using a data-driven approach
- Updates policies
- Identifies future facility needs and resource conservation priorities
- Guides priorities for park acquisition, renovation, development and preservation



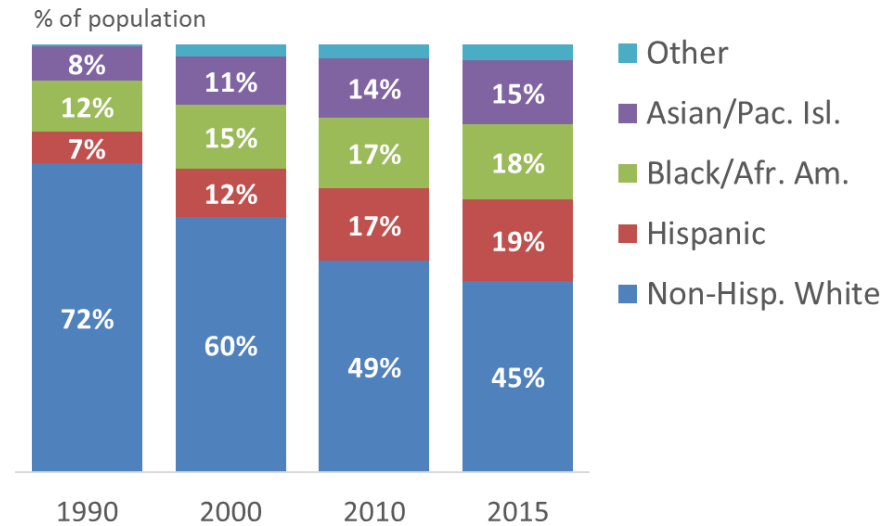
Demographic Influences

Race and Hispanic Origin 1990-2015

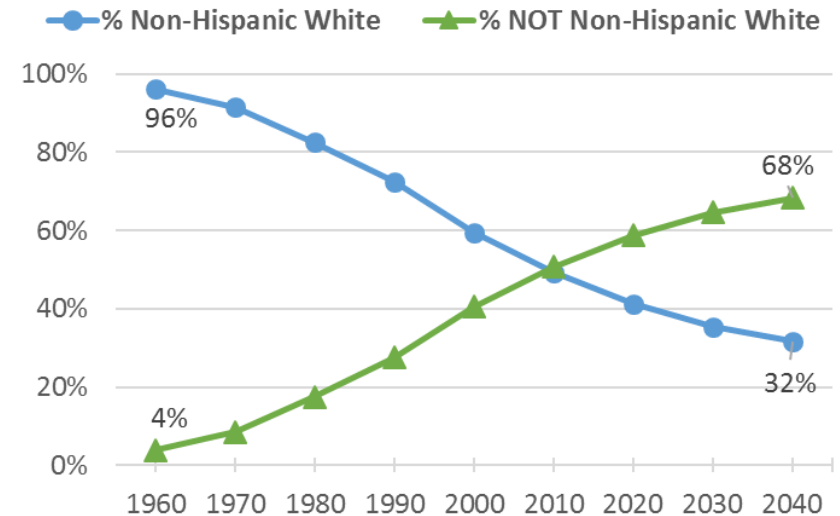
- Large population- over 1 million people since 2012

Historical and Forecasted Racial Change

- Continuing racial and ethnic diversity



Source: 1990-2010 U.S. Census, 2015 American Community Survey

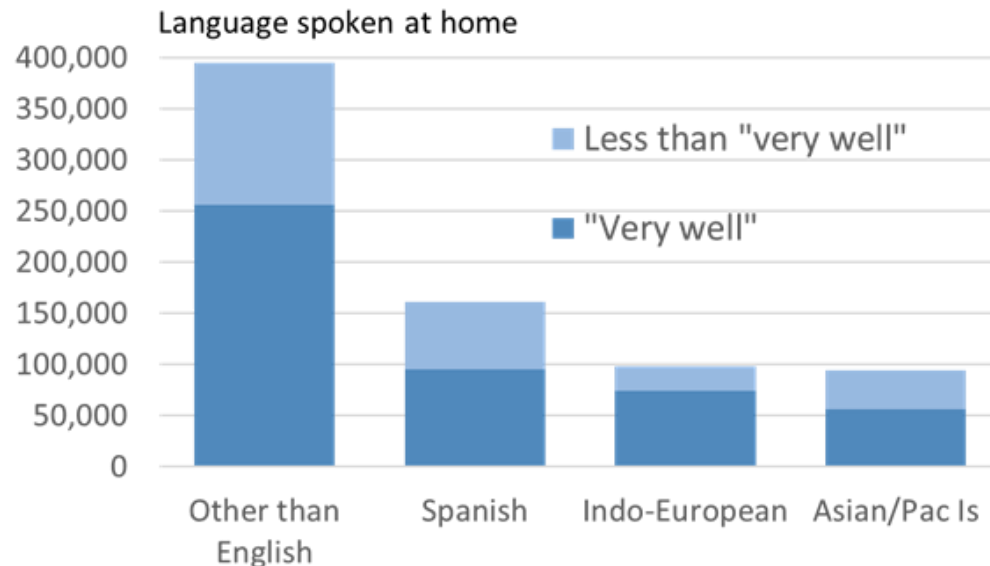


Source: 1960-2010 U. S. Census; 2010-2040 Racial Forecast, MD Dept. of Planning

Demographic Influences

Continuing racial and ethnic diversity

- One third of population is foreign born
- Wide diversity in country of origin
- Many languages and varying level of English speaking ability



Top 15 Countries of Origin

Rank	Birthplace	2015	Percent
Foreign Born		343,193	
1	El Salvador	47,646	13.9%
2	India	24,165	7.0%
3	China	22,203	6.5%
4	Korea	13,365	3.9%
5	Ethiopia	13,167	3.8%
6	Vietnam	12,381	3.6%
7	Philippines	10,216	3.0%
8	Peru	9,542	2.8%
9	Iran	7,387	2.2%
10	Colombia	6,990	2.0%
11	Mexico	6,975	2.0%
12	Honduras	6,622	1.9%
13	Taiwan	6,141	1.8%
14	Brazil	5,759	1.7%
15	Guatemala	5,408	1.6%

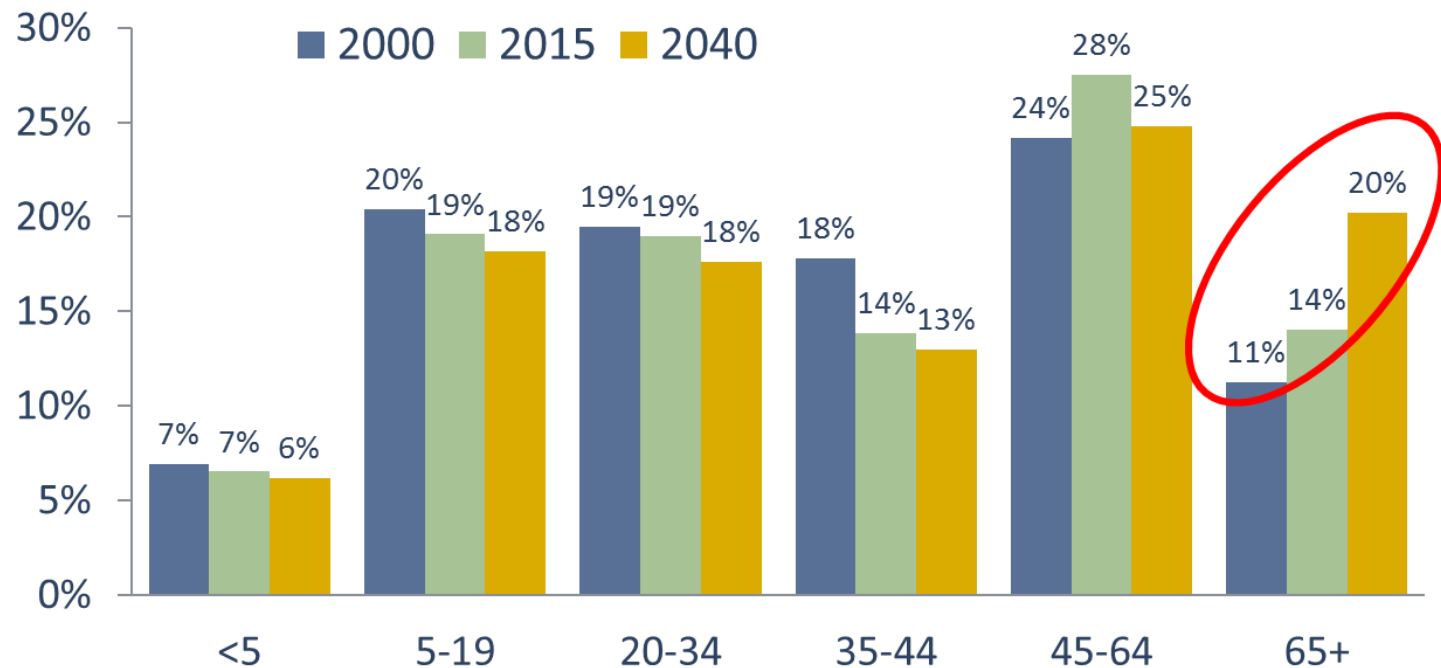
Source: 2015 American Community Survey, 1-year est.

Demographic Influences

Aging Baby Boomers

- Driving a rise in age 65+

Percent of Population by Age Group

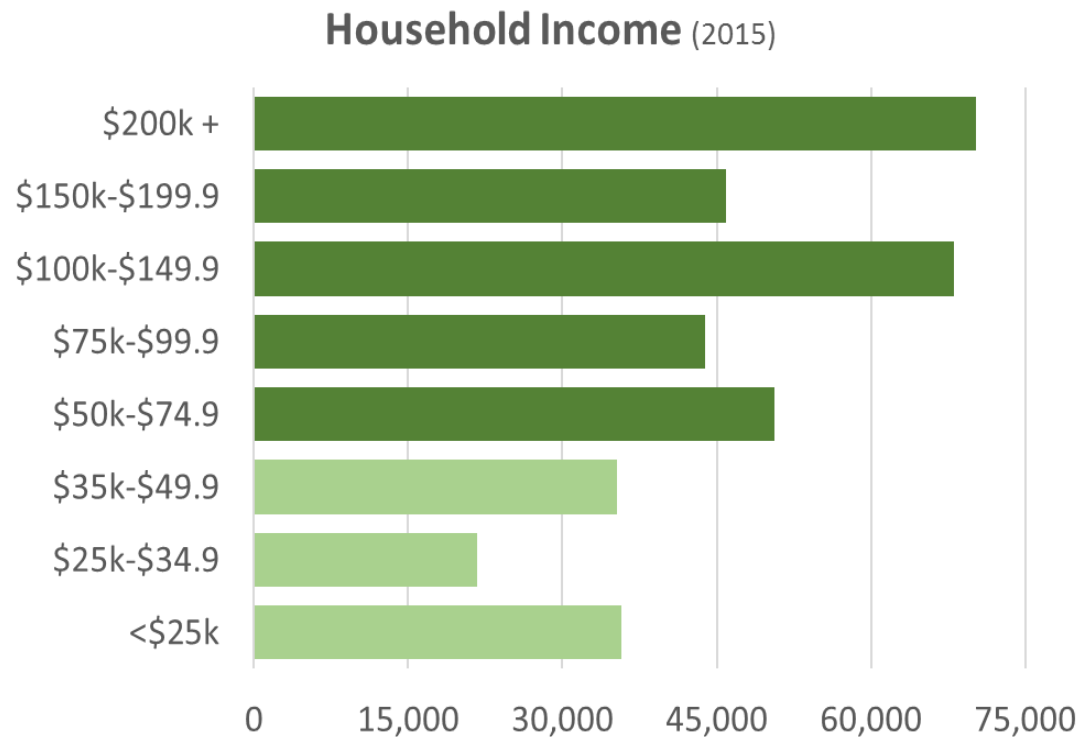


Source: 2000 Decennial Census, 2015 Annual Estimate of Population, U.S. Census; MD Dept. of Planning Age Forecast (July 2014).

Demographic Influences

Wealthy county, but not all households

- 1 in 4 households have incomes less than \$50,000
- 76,900 people below poverty level (7.5%)



Source: 2015 American Community Survey, 1-year estimate

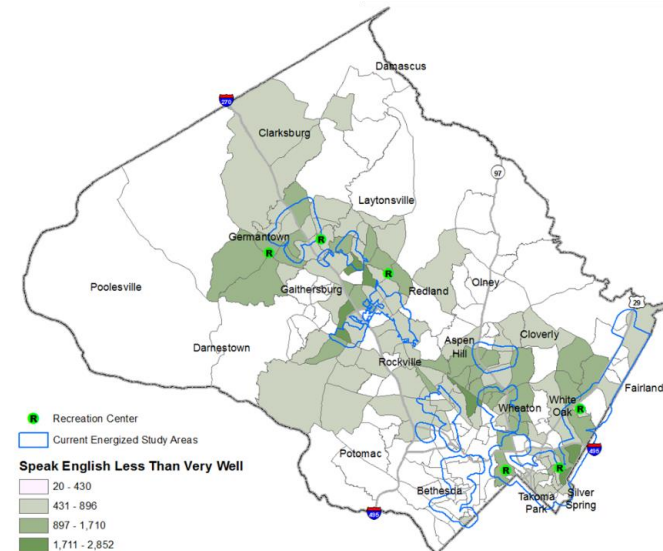
Project Process and Methodology

Feedback and ideas were gathered from nearly 3,000 Montgomery County residents, including:

- 950 reached via in-person methods, including community meetings, focus groups, and interviews
- 1000+ comments and feedback received via online survey and interactive maps
- 705 respondents to the statistically valid survey

Outreach targeted a diverse range of audiences, from active park users to those typically under-represented in the public input process:

- Active park users and non-users
- Ethnically diverse communities and older populations
- Random sampling of residents



Statistically Valid Survey Highlights



705 respondent households

- 20% indicated that English was not their primary language
- 21 different primary languages were reported



95% of respondents said that high-quality parks, trails, and recreation facilities are Very or Somewhat Important to the quality of life in Montgomery County

51% of respondents learn about park programs and activities by word of mouth

- 29% use the Montgomery Parks website
- 40% use the Montgomery Recreation website
- 33% use the Recreation and Parks Program Guide



Analysis of Results

Priority Rankings for Park Facilities/Amenities - Overall

FACILITY/AMENITY	OVERALL RANKING
Paved, Multi-use Trails (Walking, Biking)	1
Natural Surface Trails (Walking, Biking, Horseback Riding)	2
Natural Areas & Wildlife Habitats	3
Public Gardens	4
Park Shelters & Picnic Areas	5
Nature Center With Outdoor Educational Areas	6
Playgrounds	7
Flexible Lawn Areas For Events & Festivals, Pickup Sports, Etc.	8
Museums & History Centers	9
Community Gardens	10
Dog Parks	11
Rectangular Sports Fields (Soccer, Football, Ultimate Frisbee, Etc.)	12
Nature Play Spaces	13
Historic & Cultural Sites	14

Analysis of Results

Common needs across all demographic groups

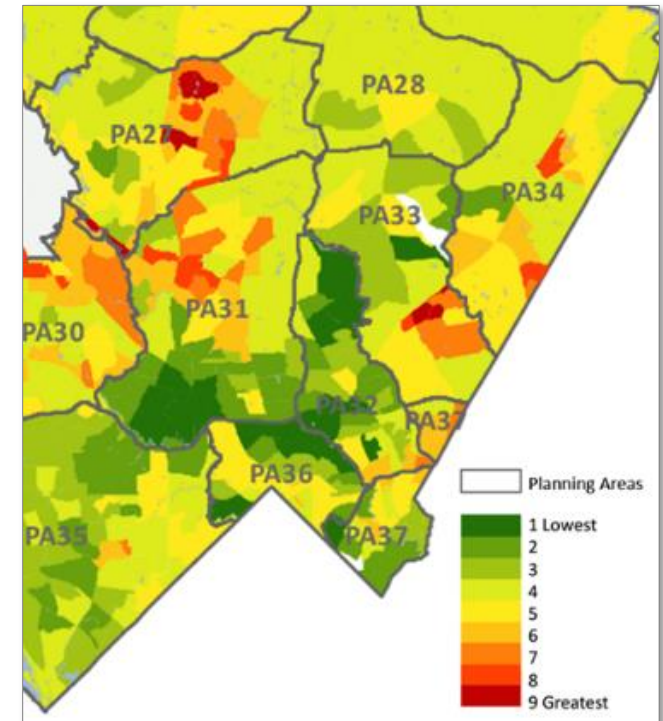
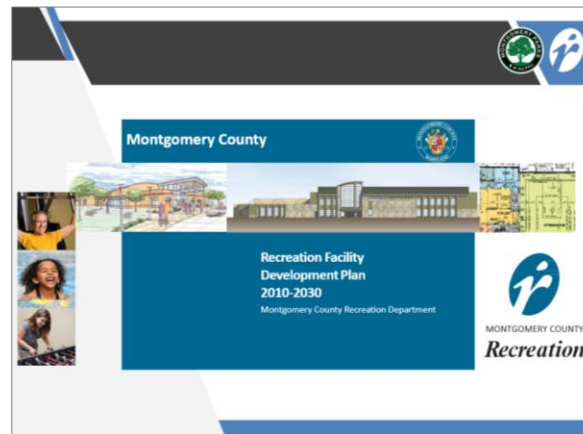
- Paved, multi-use trails
- Natural surface trails
- Public gardens
- Park shelters & picnic areas
- Events
- All ages programming



Recommendation Highlights

Provide spaces and programs that bring people together: *Build Community through Parks and Recreation*

- Create a network of Great Urban Parks
- Promote Park Equity
- Produce Community-Building Events
- Expand the Park Activation Program
- Provide Regional Recreation Centers



Recommendation Highlights

Increase funding for the management and protection of natural and cultural resources: *Steward and Interpret our Natural and Cultural Resources*

- Expand Ongoing Natural Resource Management Efforts
- Create the Next Generation of Environmental Stewards
- Expand Cultural Resource Stewardship and Interpretive Efforts
- Continue to support a Functioning Rural and Agricultural Community



Recommendation Highlights

Utilize existing park and recreation facilities and lands more fully:

Optimize What We Have

- Continue to Balance Renovation, Development and Acquisition
- Create a Regionally Significant Trail System of natural and hard surface trails
- Create a Regionally Significant System of Athletic Fields to serve all areas of Montgomery County
- Determine where there are underutilized sports courts or other facilities for potential conversion to more needed facilities



Project Schedule



2016

SPRING	Preliminary Work
SUMMER	Planning Board review of Outline, Schedule and Outreach Strategy
FALL	Focus group meetings, Surveys, Public events, Begin writing

2017

WINTER	Continued focus group meetings, Surveys, Public events, Continue writing
MARCH 2017	Transmit preliminary Draft to State March 1, 2017 Community meetings on preliminary content Adjust document based on public input Write Working (Staff) Draft
APRIL 27	Planning Board review of Working (Staff) Draft
MAY - JUNE	May 25, 2017 Public Hearing June 8 and 22, 2017 Work Sessions Approval of final document
JULY 1, 2017	Submittal of approved document to State
FALL	Council Briefing

Overview of M-NCPPC parks in the Veirs Mill Road Corridor



M-NCPPC Montgomery Parks
Chuck Kines, AICP, CPRP
Planner Coordinator



Park Pattern and Role (Hierarchy)

Each area master plan should include a system & hierarchy of open spaces based on the roles of each type of open space

■ For Sector Plan Areas:

- **active recreation destinations** located within or near the plan area, including courts, playgrounds, and lawn areas large enough for pick up soccer, festivals or events, etc.
- **a central “civic green”** urban park (see Chapter 3), ranging in size from ½ to 2 acres, depending on projected densities, located in close proximity to a public transit hub, next to activating uses, with a mixture of hard and soft surfaces including a central lawn area for events
- **an interconnected system** of sidewalks and trails to connect parks and open spaces
- **wooded areas** that will provide a sense of contact with nature

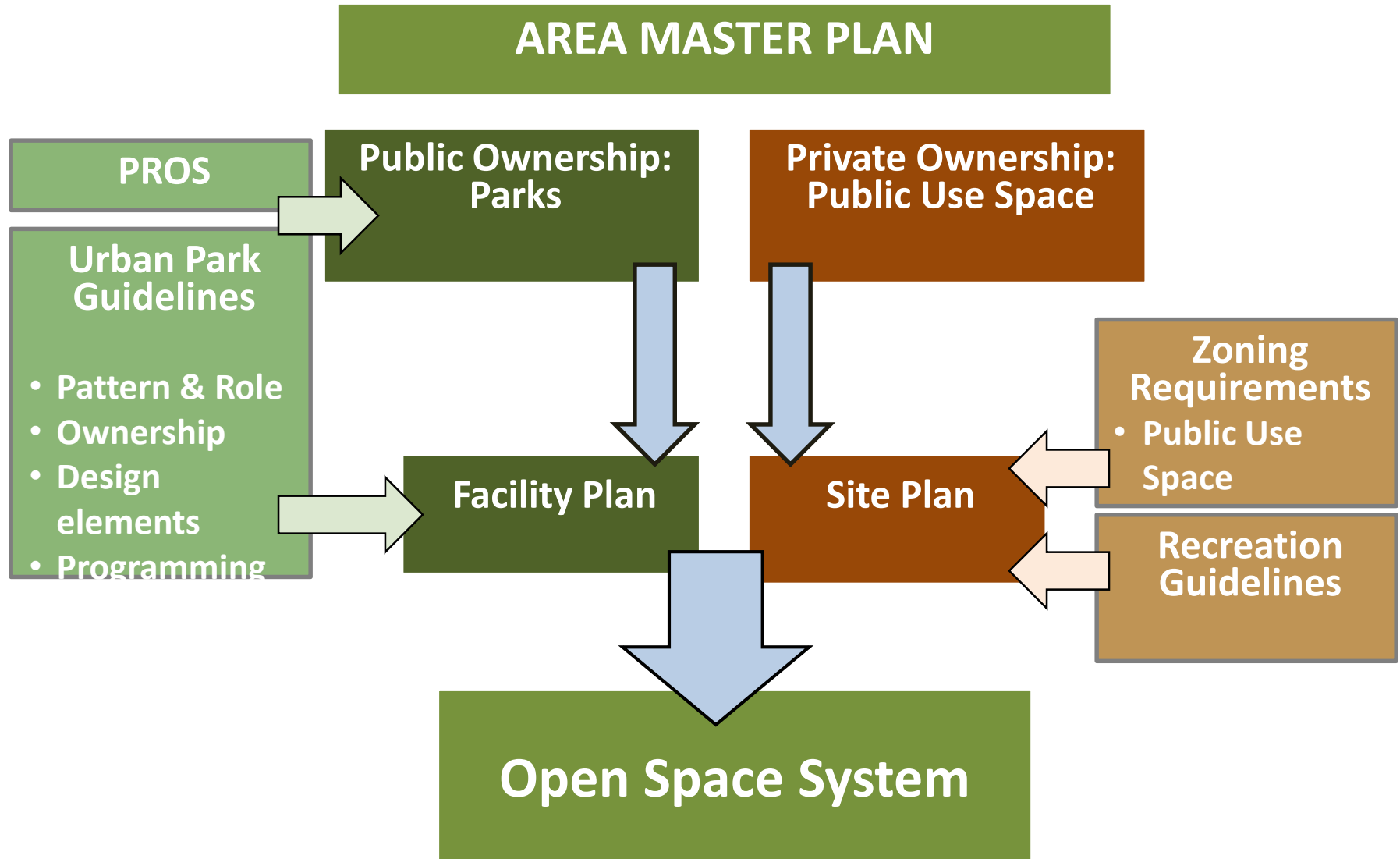
■ For each Urban Neighborhood: a neighborhood green, urban buffer park, or community use recreational park

■ For each Block: an urban square, plaza, or green area

■ For each Building: outdoor recreation space

■ For each Residence: private outdoor space

Public and Private Sector Roles in Open Space Systems



Needs Estimated by Geographic Areas

Countywide Needs

- Recreation / Aquatic Centers
- Trails
- Natural Areas
- Dog Parks
- Picnic Shelters / Group Picnic Areas
- Cultural Resources
- Ice Rinks
- Skate Parks
- Volleyball Courts
- Cricket Fields
- Civic Greens
- Community Open Space
- Urban Wooded Areas

Athletic Field Area Needs

- Adult Rectangular Fields
- Youth Rectangular Fields
- Baseball Fields
- Adult Softball Diamonds
- Youth Softball Diamonds

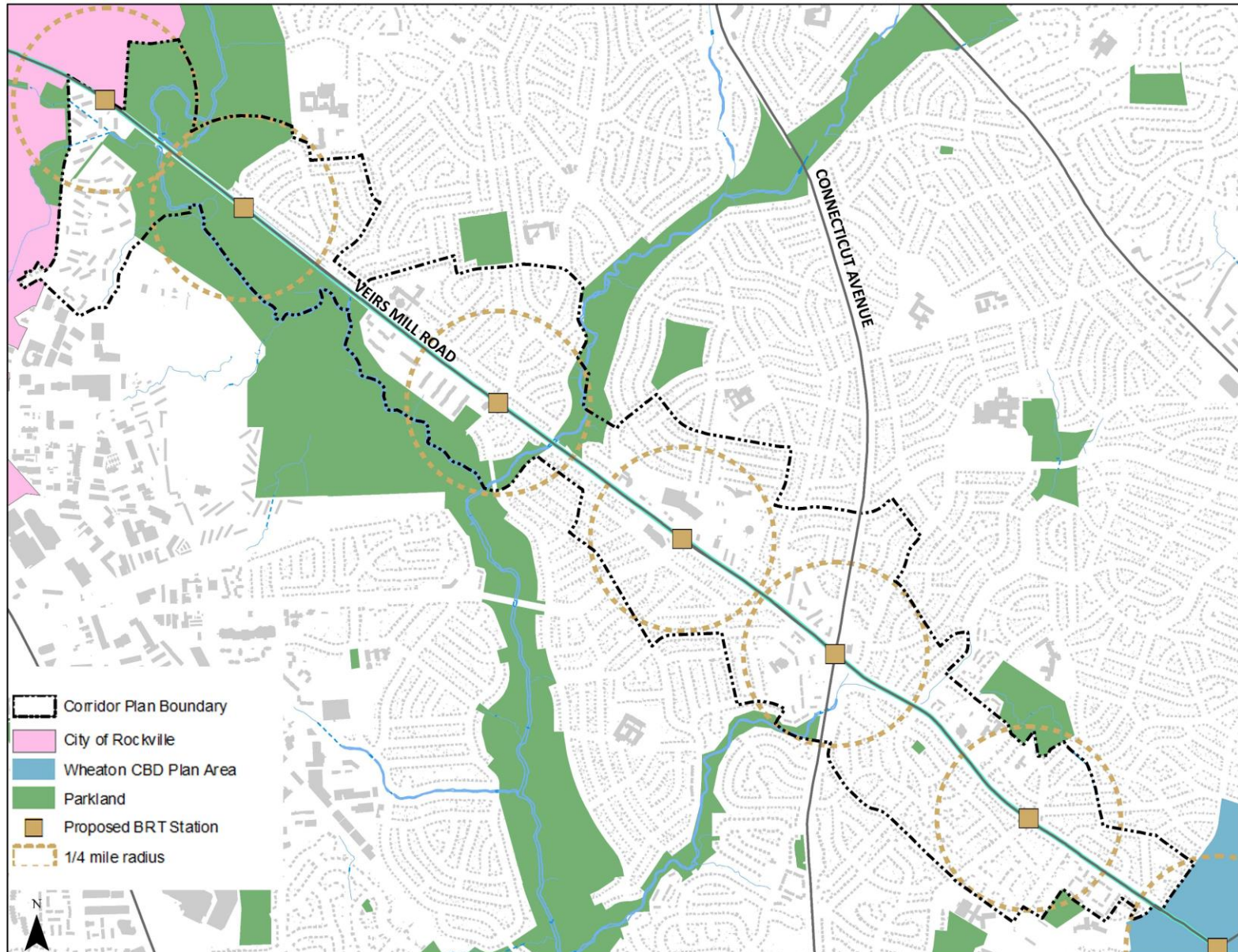
Planning Area Needs

- Gathering Spaces
- Playgrounds
- Basketball Courts
- Tennis Courts



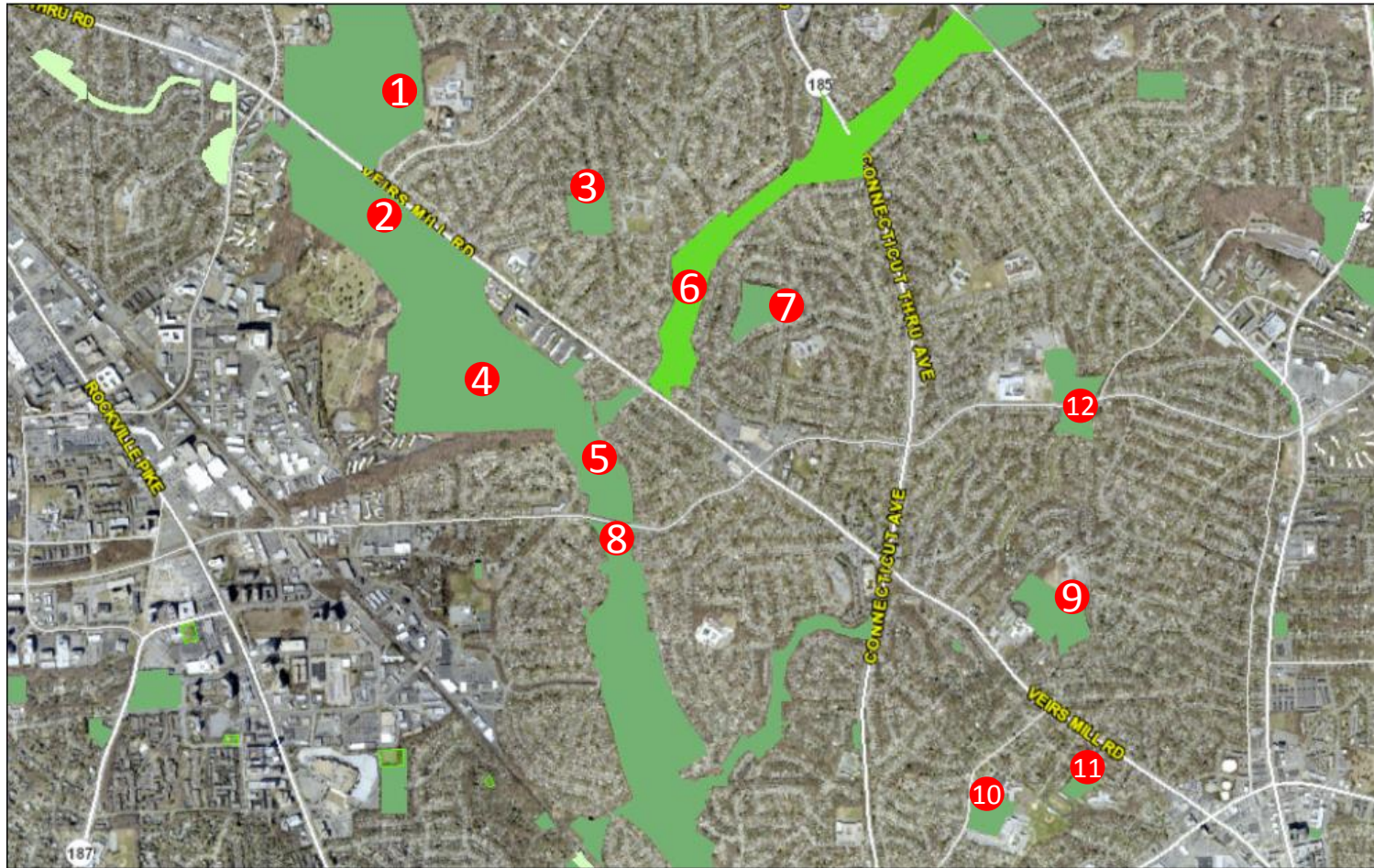


VEIRS MILL CORRIDOR MASTER PLAN





PARKS – EXISTING CONDITIONS



1. Aspen Hill LP
2. Parklawn LP
3. Wheaton Woods LP
4. Rock Creek SVP #6
5. Winding Creek LP
6. Matthew Henson SP
7. Stoneybrook LP
8. Rock Creek SVP #5
9. Wheaton-Claridge LP
10. Newport Mill LP
11. Pleasant View LP
12. Glenmont LP

1. Aspen Hill Local Park



- ☐ 39 acres
- ☐ acquired in 1956
- ☐ two softball fields
- ☐ one baseball field

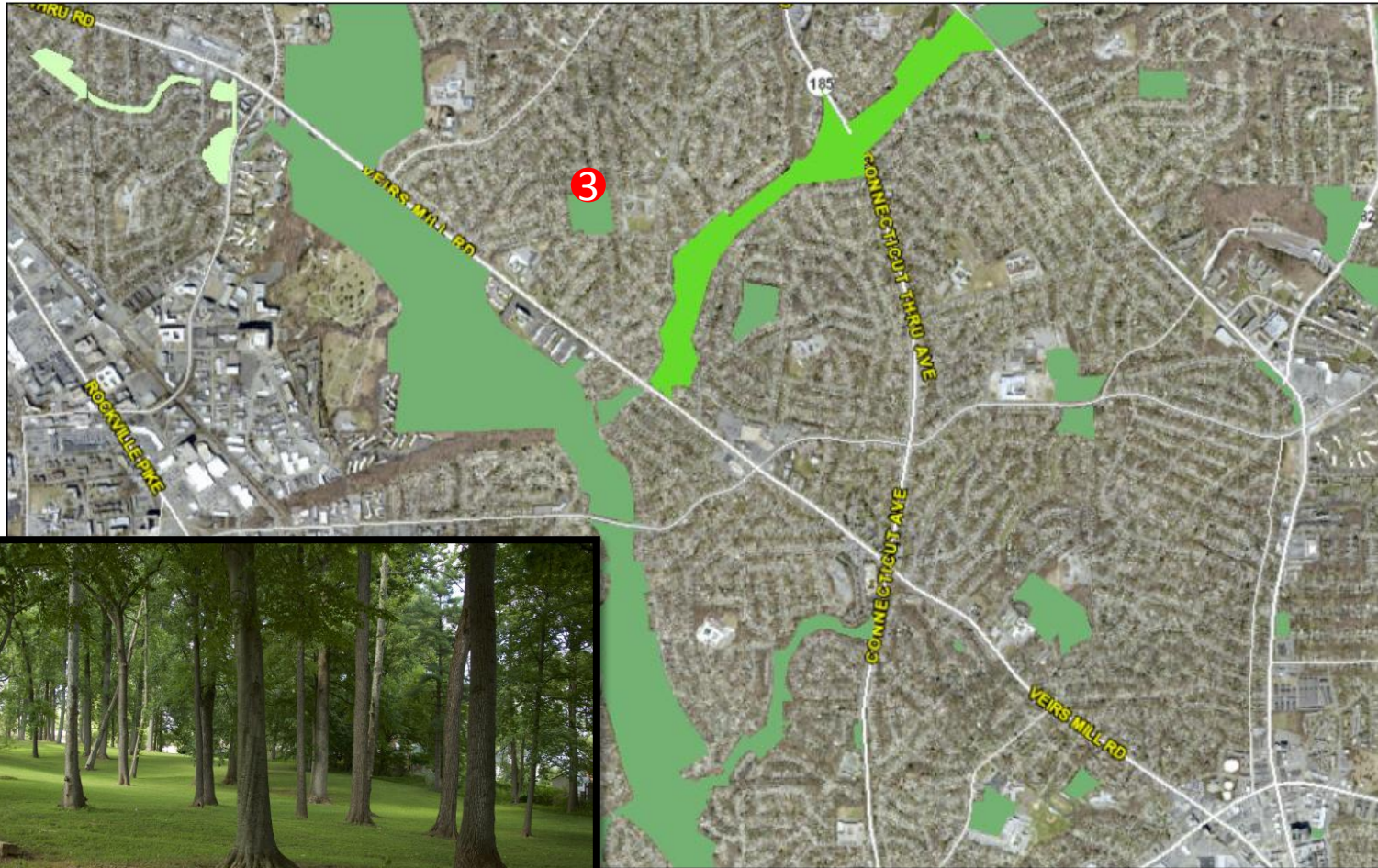
2. Parklawn Local Park



- ☐ 13-acre park
- ☐ Two soccer fields
- ☐ A new trail connector between the Rock Creek Trail and Fishers Lane is scheduled to be completed by the summer of 2017



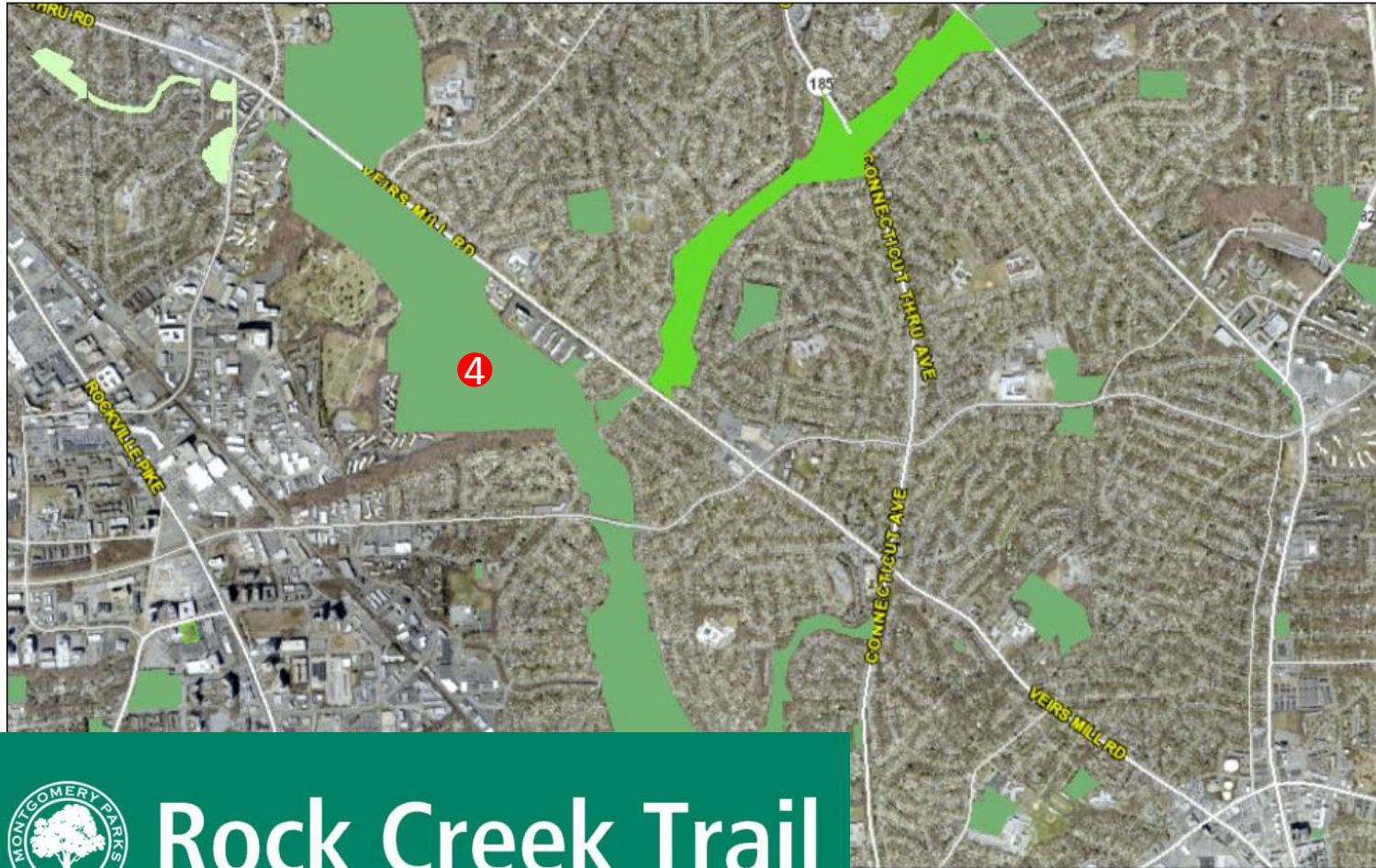
3. Wheaton Woods Local Park



- ☐ Acquired in 1957
- ☐ Playground
- ☐ Two softball field
- ☐ Two tennis courts
- ☐ Football/soccer field



4. Rock Creek Stream Valley Park



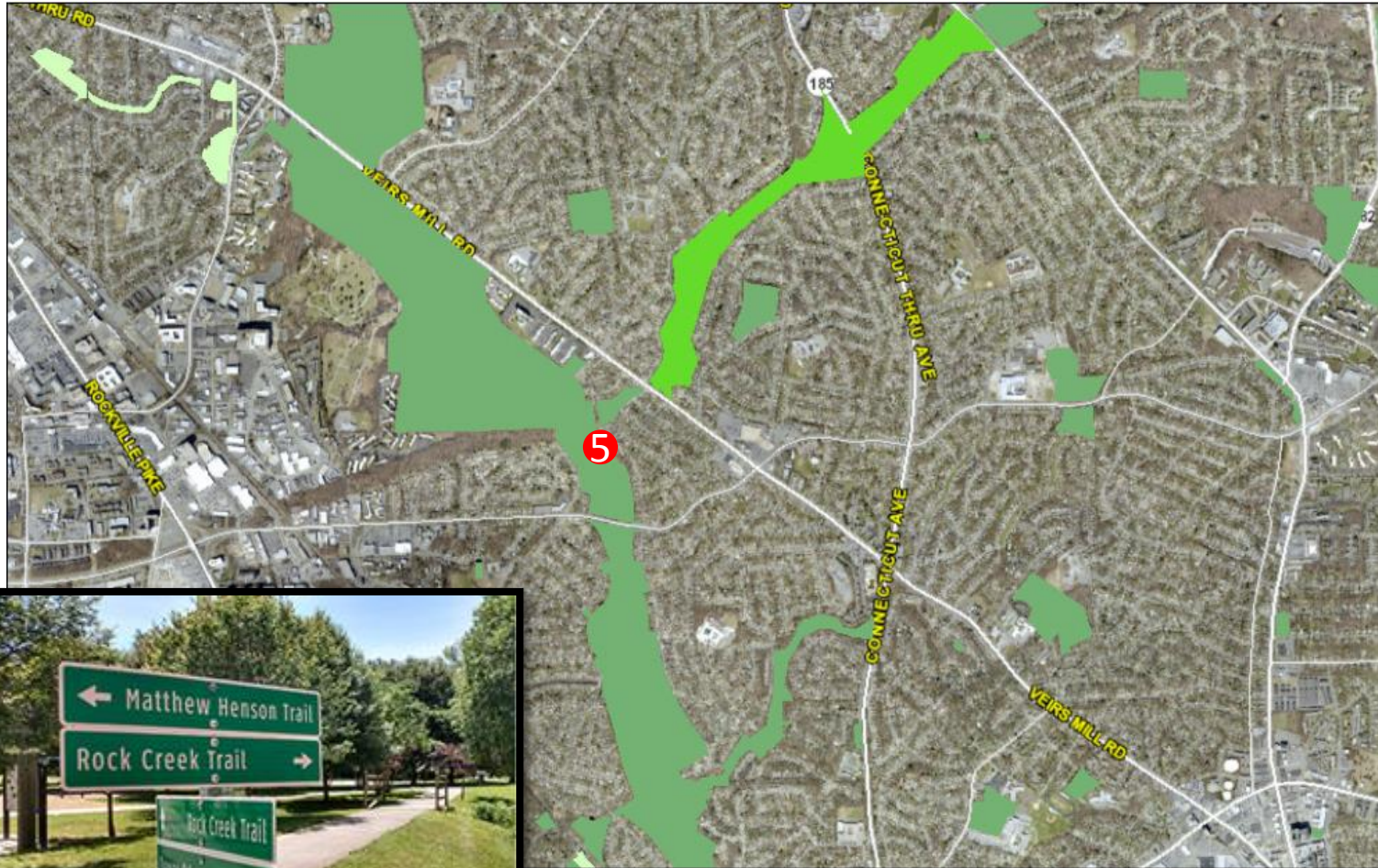
☐ 18-mile Rock Creek Trail



Rock Creek Trail



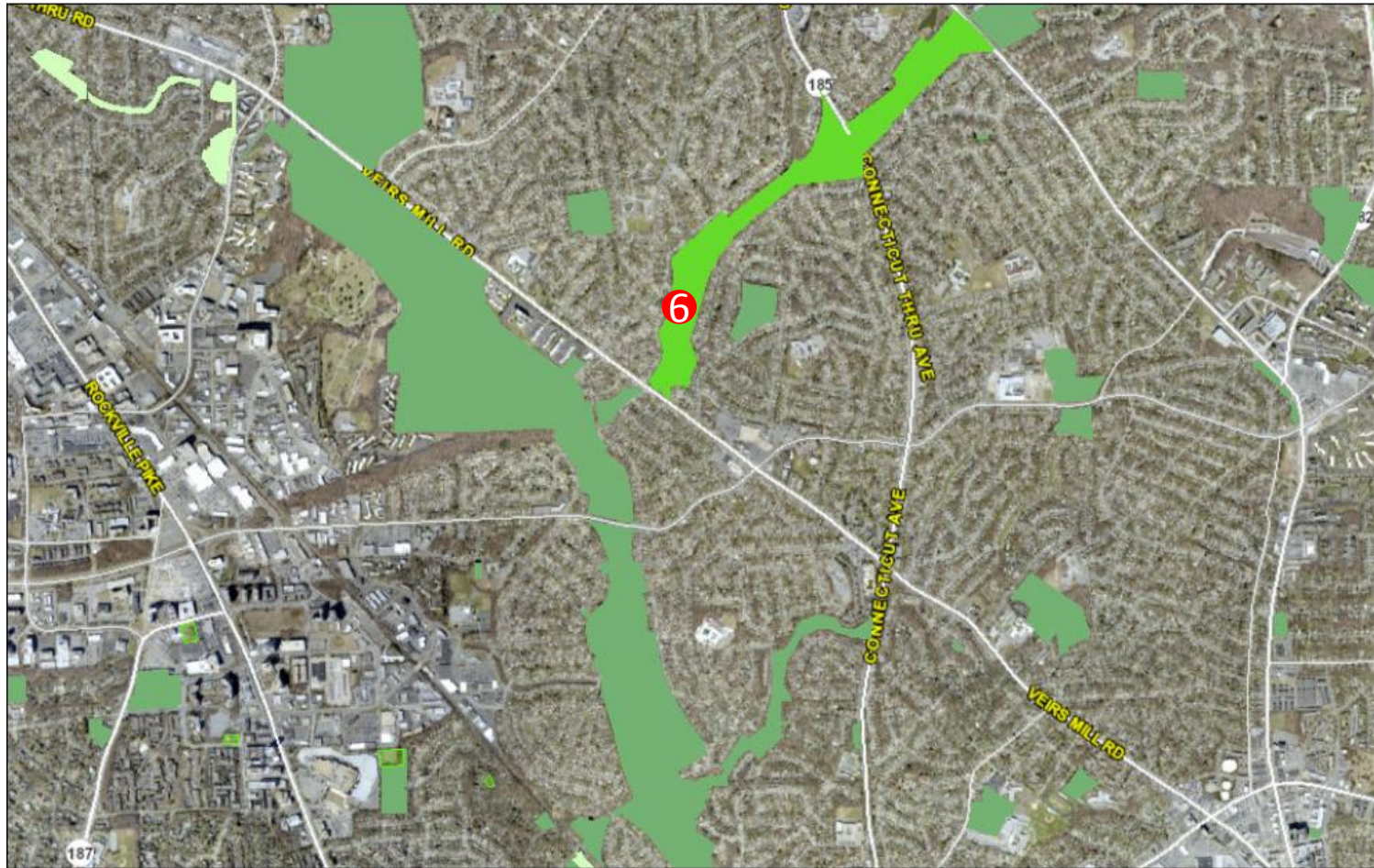
5. Winding Creek Local Park



- ☐ 12.5 acres
- ☐ Acquired in 1951
- ☐ Playground
- ☐ Multiuse fields
- ☐ Basketball courts
- ☐ The Rock Creek Trail and the Matthew Henson Trail intersect nearby



6. Matthew Henson State Park



- ☐ A greenway along Turkey Branch
- ☐ Managed by M-NCPPC under an agreement with the State of Maryland.
- ☐ 4.5 mile Matthew Henson Trail completed in 2009
- ☐ Links Rock Creek Hiker-Biker Trail with Alderton Road near Layhill.

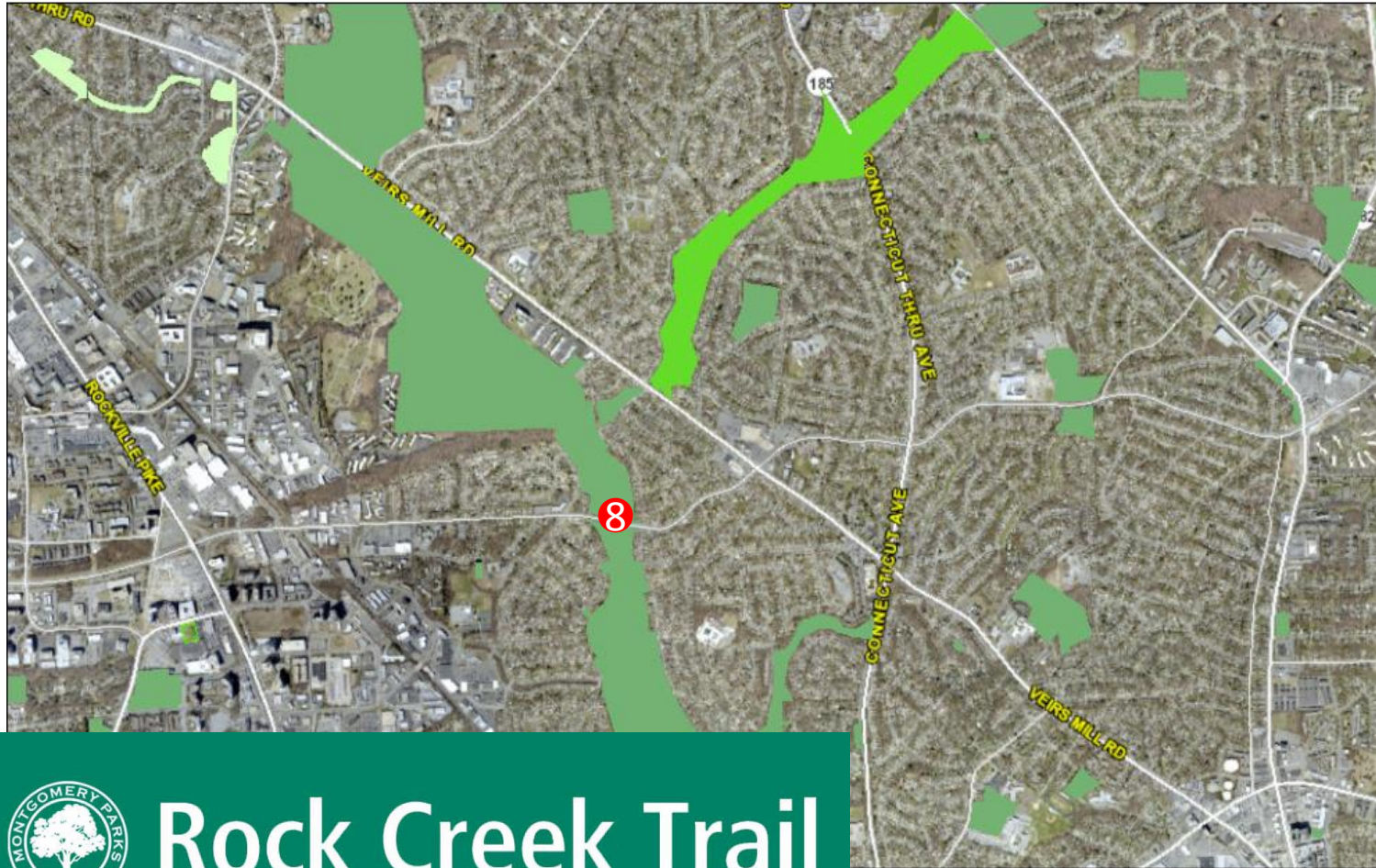
7. Stoneybrook Local Park



- ☐ 11-acre park
- ☐ Acquired in 1971
- ☐ Playground
- ☐ Two softball fields
- ☐ Lighted baseball and tennis facilities.



8. Rock Creek Stream Valley Park #5



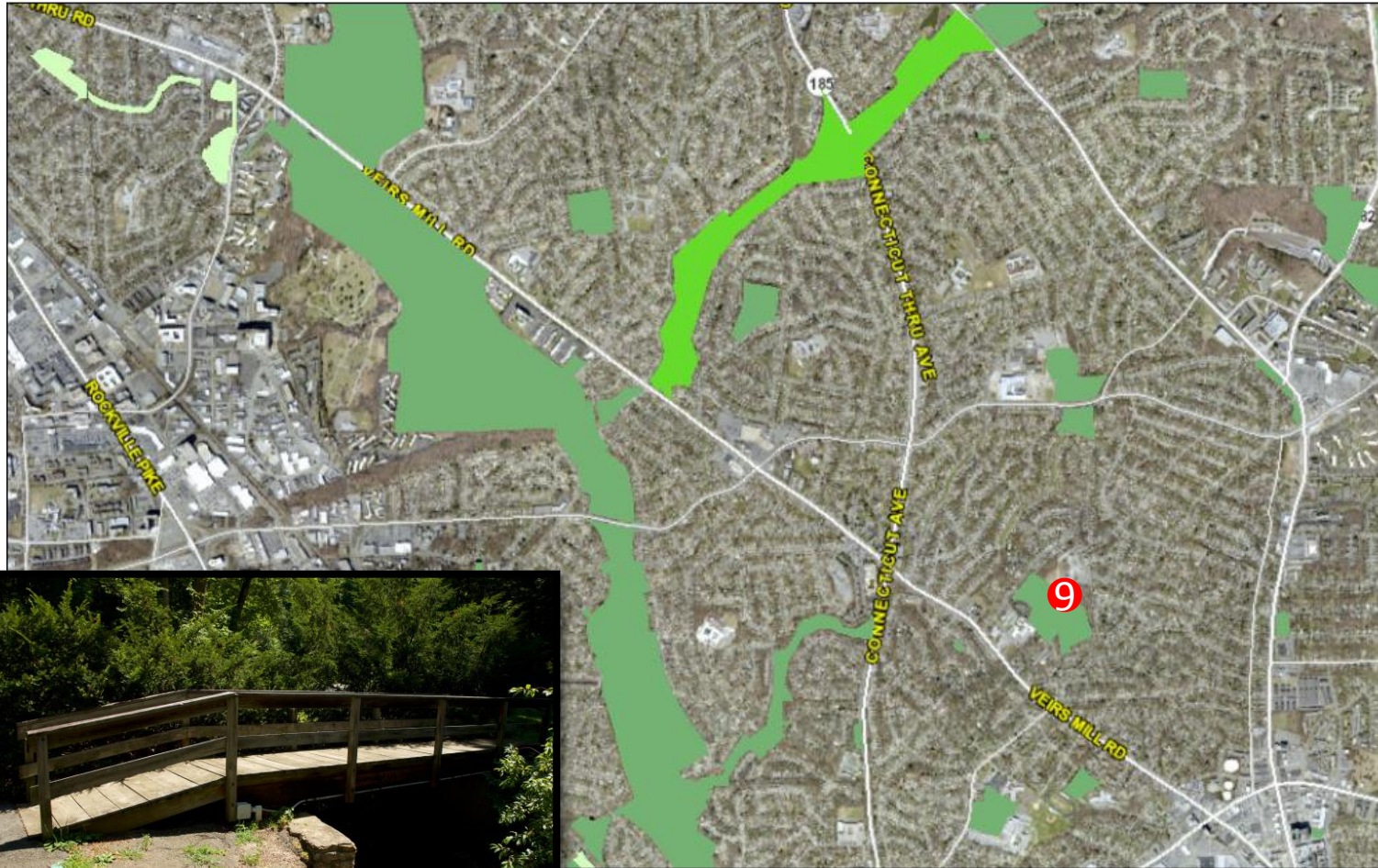
☐ 18-mile Rock Creek Trail



Rock Creek Trail



9. Wheaton-Claridge Local Park

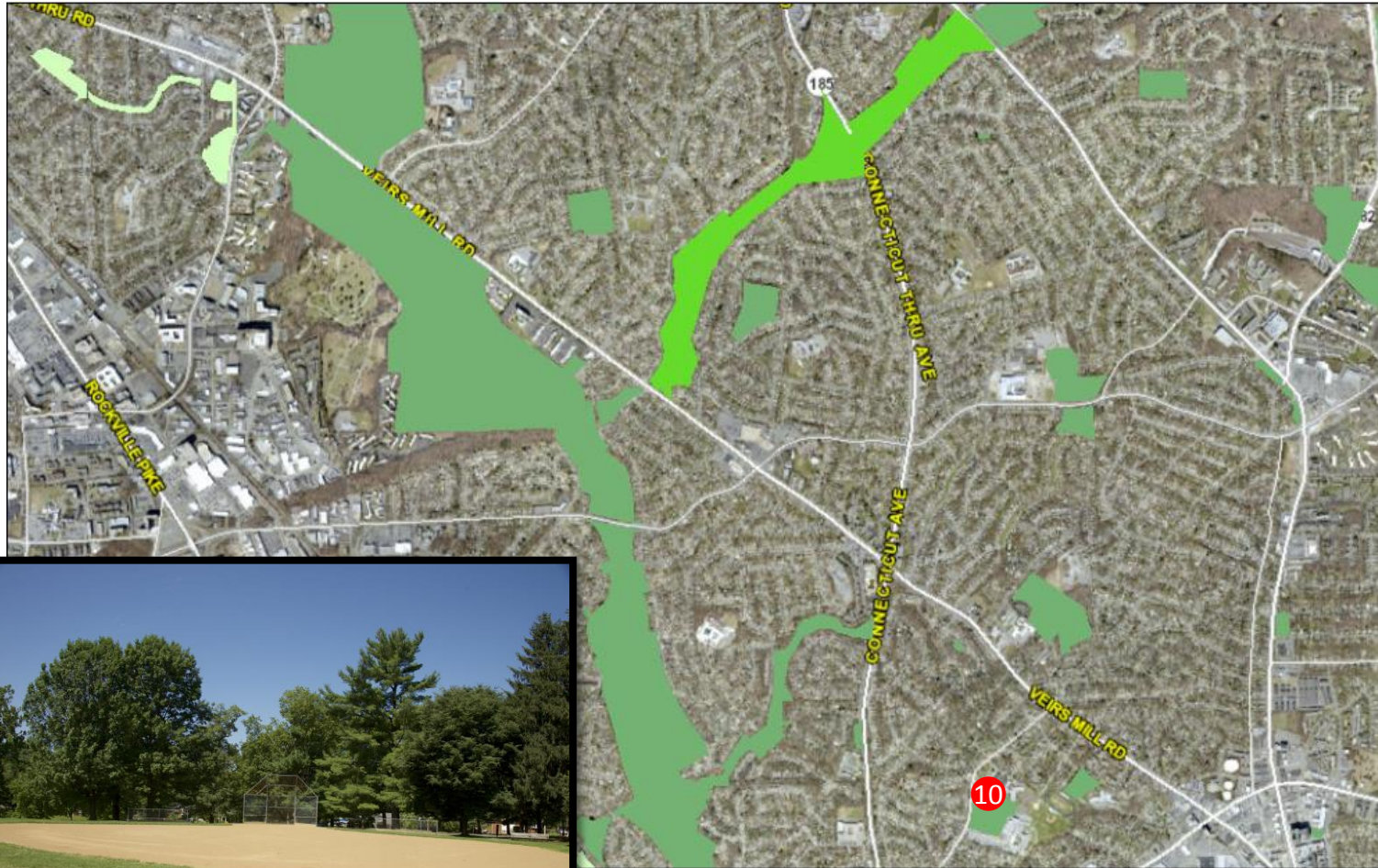


- ☐ 21.1 acres
- ☐ Picnic area
- ☐ Park Activity Building
- ☐ Basketball court





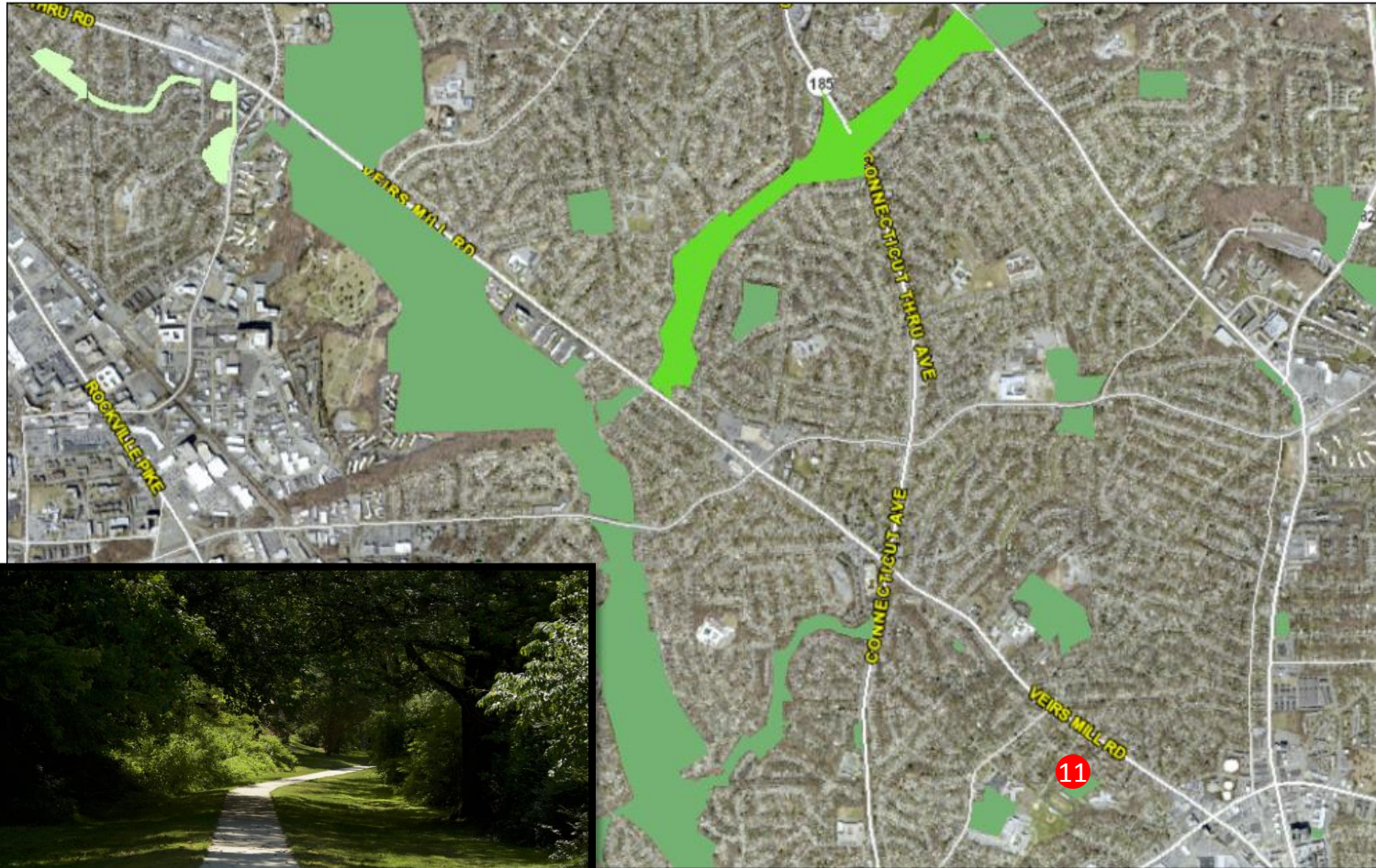
10. Newport Mill Local Park



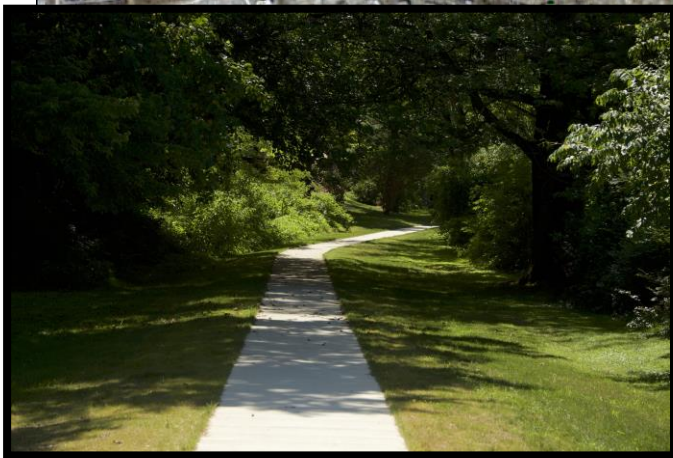
- ☐ Adjacent to Albert Einstein High School
- ☐ Acquired in 1955
- ☐ Playground
- ☐ Two softball fields
- ☐ Three multiuse fields
- ☐ Picnic area



11. Pleasant View Local Park



- ☐ 3.8 acres
- ☐ Acquired in 1959
- ☐ Softball field
- ☐ Soccer field
- ☐ Small picnic area



12. Glenmont Local Park



- ☐ 21.2-acres
- ☐ Acquired in 1950
- ☐ Playground
- ☐ Multi-use field
- ☐ Tennis courts
- ☐ Picnic area
- ☐ Park Activity Building

Wheaton/Glenmont Pool features:

- ☐ Six lane, 50-meter Main Pool
- ☐ One-meter and half-meter diving boards
- ☐ A separate shallow water Leisure Pool with fountains, sprays and kiddie slides



PARKS – PLANNED IMPROVEMENTS

- Stoneybrook Local Park – ADA enhancements to parking lot, activity building and tennis courts planned for FY 20/21
- Wheaton-Claridge Local Park – ADA enhancements underway, upgrades to Park Activity Building, sanctioned park trails
- Parklawn Local Park – Drainage improvements recently completed in 2016-17
- Matthew Henson Trail Crossing
 - Short-term improvements include immediate changes to signs and pavement markings
 - Longer-term objectives include study of a grade separated crossing in combination with storm water management improvements for Turkey Branch



DISPOSITION PROCESS FOR PUBLIC PROPERTY



DISPOSITION PROCESS FOR PUBLIC PROPERTY

- Executive Regulation 11-13AM, effective February 2014;
- Established policies and procedures for the disposition of real property that is owned or controlled by the County;
- Applies to most real property owned or controlled by the County with few exceptions;
- Applies to a sale and lease/license longer than 2 years.

DISPOSITION PROCESS FOR PUBLIC PROPERTY

- Appropriate for another County government use;
- Reuse analysis for other County agencies and departments;
 - Montgomery County Public Schools, Parks, WSSC, Housing Opportunities Commission, municipalities;
- County Executive sets aside for reuse or issues Declaration of No Further Need;
- Outside County government disposition or sale to a 3rd party entails competitive solicitation, public hearing, County Council review and approval.

NEXT STEPS

- Mid-June: Community Meeting #4 – Preliminary Recommendations
- Mid-July: Planning Board – Preliminary Recommendations
- Mid-September: Planning Board – Working Draft of Master Plan
- October: Planning Board Public Hearing
- Nov – December: Planning Board Worksessions
- January: Approval of Planning Board Draft Master Plan
- March 2018: County Council Public Hearing



CONNECT WITH US

Jeffrey Bourne, Chief
Division of Facilities and Capital Programs
Montgomery County Recreation
Phone: 240-777-6800
Jeffrey.Bourne@montgomerycountymd.gov

Steve Mader, Superintendent of Parks and
Facilities
Rockville Department of Recreation and Parks
Phone: 240-314-8702
smader@rockvillemd.gov

Greg Ossont, Deputy Director
Montgomery County Department of General
Services
Phone: 240-777-6192
Greg.Ossont@montgomerycountymd.gov

Brooke Farquhar, Master Planner / Supervisor
Park and Trail Planning, Park Planning and
Stewardship Division
M-NCPPC Montgomery Parks
Phone: 301-650-4388
Brooke.Farquhar@montgomeryparks.org

Charles Kines
Park and Trail Planning, Park Planning and
Stewardship Division
M-NCPPC Montgomery Parks
Phone: 301-495-2184
Charles.Kines@montgomeryparks.org



CONNECT WITH US

- Staff Contacts

Jessica McVary

Phone: 301-495-4723

Email: Jessica.McVary@montgomeryplanning.org

Nancy Sturgeon

Phone: 301-495-1308

Email: Nancy.Sturgeon@montgomeryplanning.org

- Project Webpage: www.montgomeryplanning.org/veirsmill
- Interactive Map: <http://mcatlas.org/vmplan>
- Twitter: @montgomeryplans
- Facebook: Facebook.com/montgomeryplanning