

# HOUSING UNITS SOLD

	2000	2008	2009		
all housing units	4,101	1,907	2,526	-53%	32%
single-family detached	2,469	1,104	1,262	-49%	14%
townhouses	860	541	585	-32%	8%
condominiums	772	262	678	-12%	155%

+ 82.9 MI  
 - 2327 FT  
 + 39.69

## MONTGOMERY COUNTY DATA ATLAS

### COUNCIL DISTRICT MAPS

MAY 2012

## abstract

---

This document contains sets of maps depicting zoning, land use, schools, and other landmarks in each Montgomery County Council district.

Source of copies

Maryland-National Capital Park and Planning Commission

8787 Georgia Avenue

Silver Spring, MD 20910-3760

online at: [MontgomeryPlanning.org/research](http://MontgomeryPlanning.org/research)

# HOUSING UNITS SOLD

	2000	2008	2009		
all housing units	4,101	1,987	1,579	-58%	23
single-family detached	2,469	1,104	1,262	-49%	14%
townhouses	860	541	686	-32%	2%
condominiums	772	252	678	-12%	19%

+ 82.9 MI  
- 2327 FT  
+ 39.69

## MONTGOMERY COUNTY DATA ATLAS COUNCIL DISTRICT MAPS

MAY 2012

# contents

---

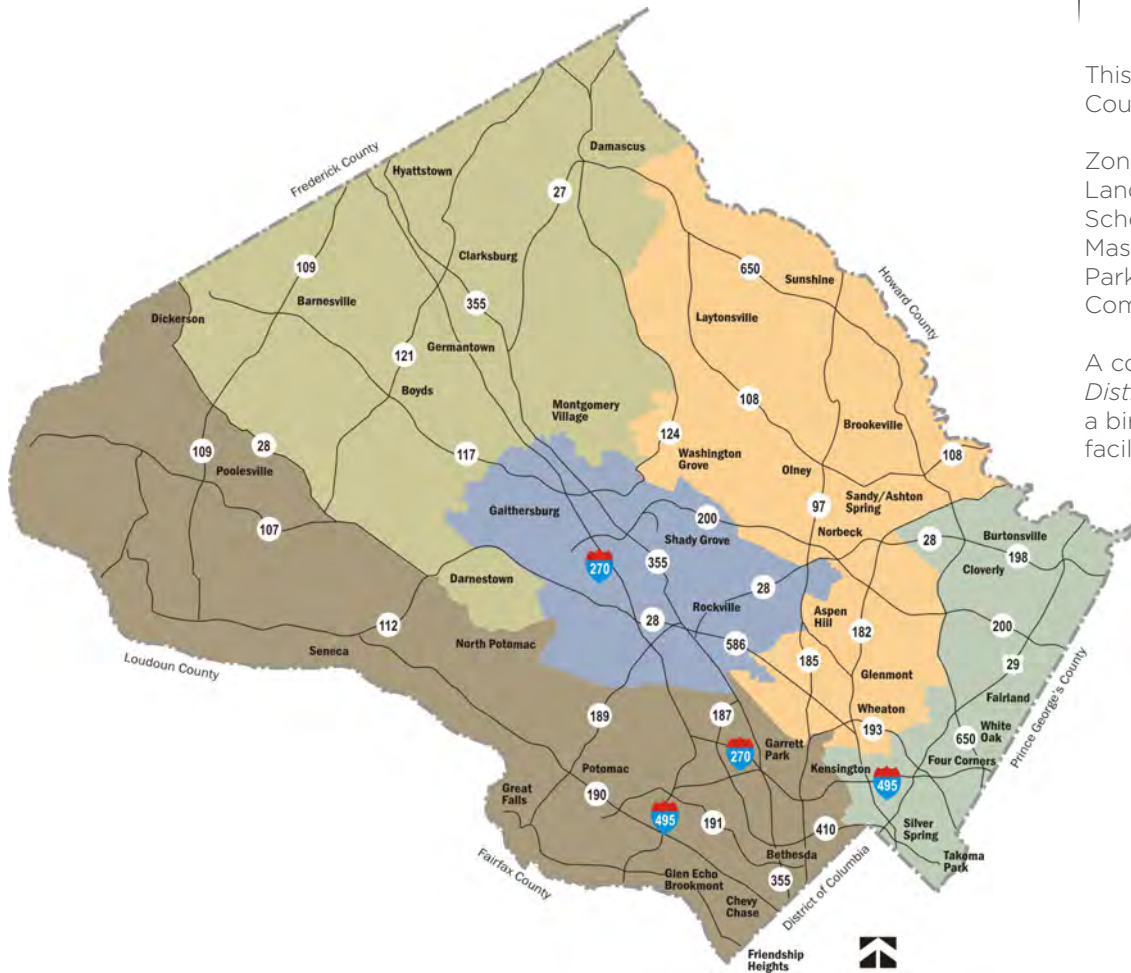
<b>introduction</b>	<b>5</b>
<b>district 1: overview</b>	<b>7</b>
zoning	8
land use	10
schools	12
master plans	14
environmental features	16
community facilities	18
<b>district 2: overview</b>	<b>21</b>
zoning	22
land use	24
schools	26
master plans	28
environmental features	30
community facilities	32
<b>district 3: overview</b>	<b>35</b>
zoning	36
land use	38
schools	40
master plans	42
environmental features	44
community facilities	46
<b>district 4: overview</b>	<b>49</b>
zoning	50
land use	52
schools	54
master plans	56
environmental features	58
community facilities	60
<b>district 5: overview</b>	<b>63</b>
zoning	64
land use	66
schools	68
master plans	70
environmental features	72
community facilities	74

# introduction

This data atlas provides a geographic snapshot of Montgomery County's five council districts. Each set of district maps covers:

- Zoning
- Land use
- Schools
- Master plans
- Parks, forest conservation easements and special protection areas
- Community facilities

A companion piece to *Montgomery County Snapshot: Council Districts by the Numbers*, the data atlas is intended to provide a bird's-eye view of district development patterns, community facilities, and policy focuses.



DISTRICT 1



DISTRICT 2



DISTRICT 3



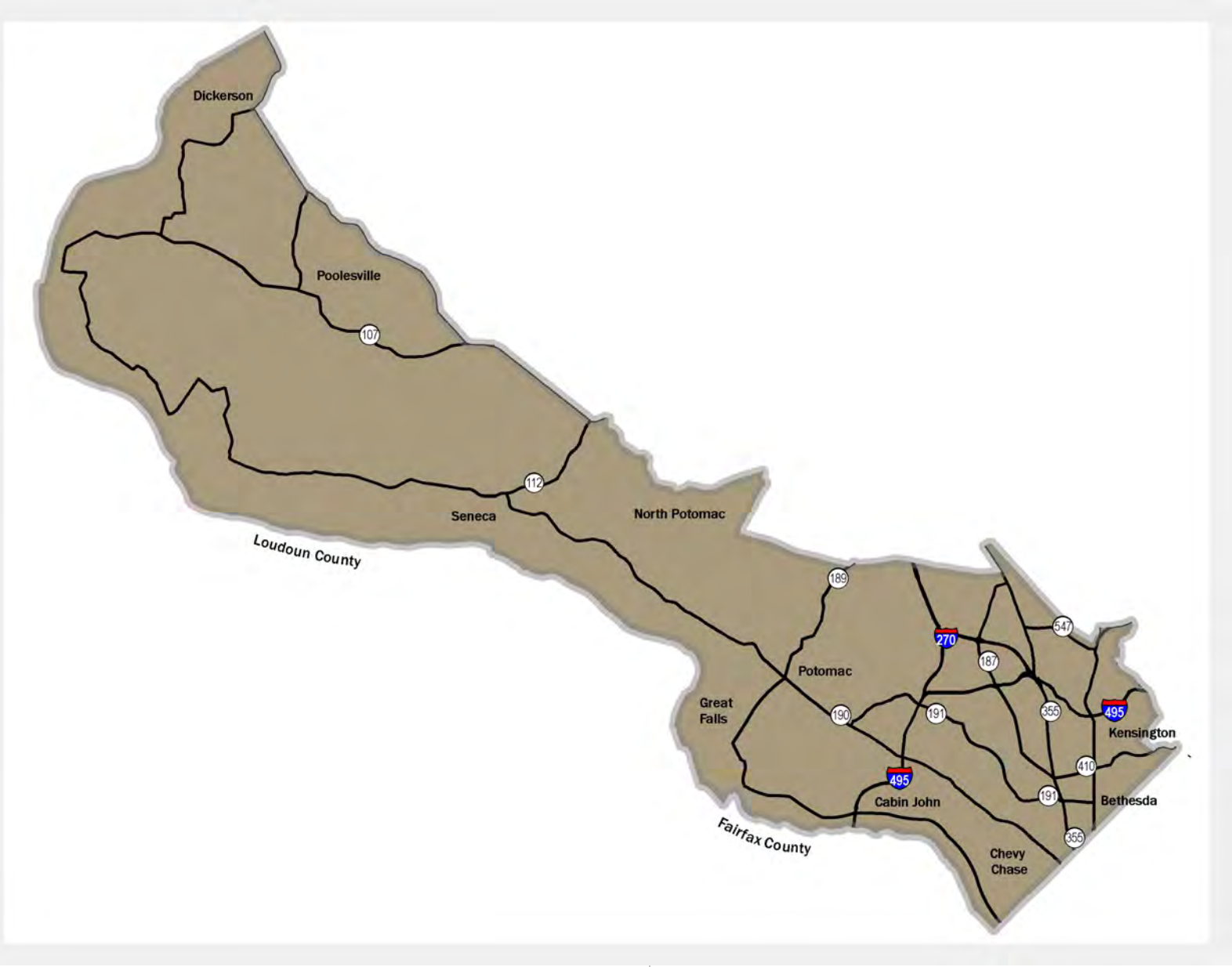
DISTRICT 4

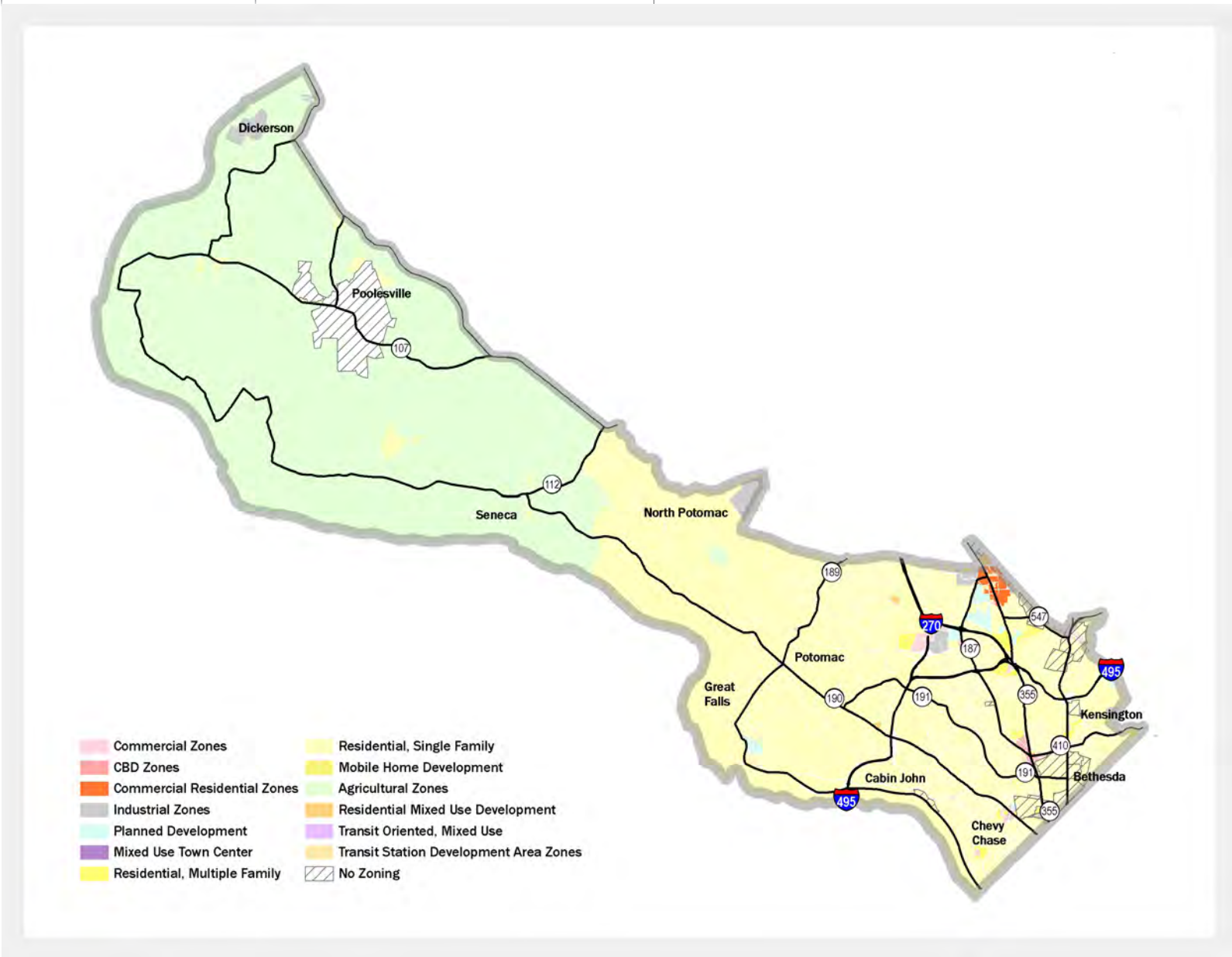


DISTRICT 5



district 1: overview







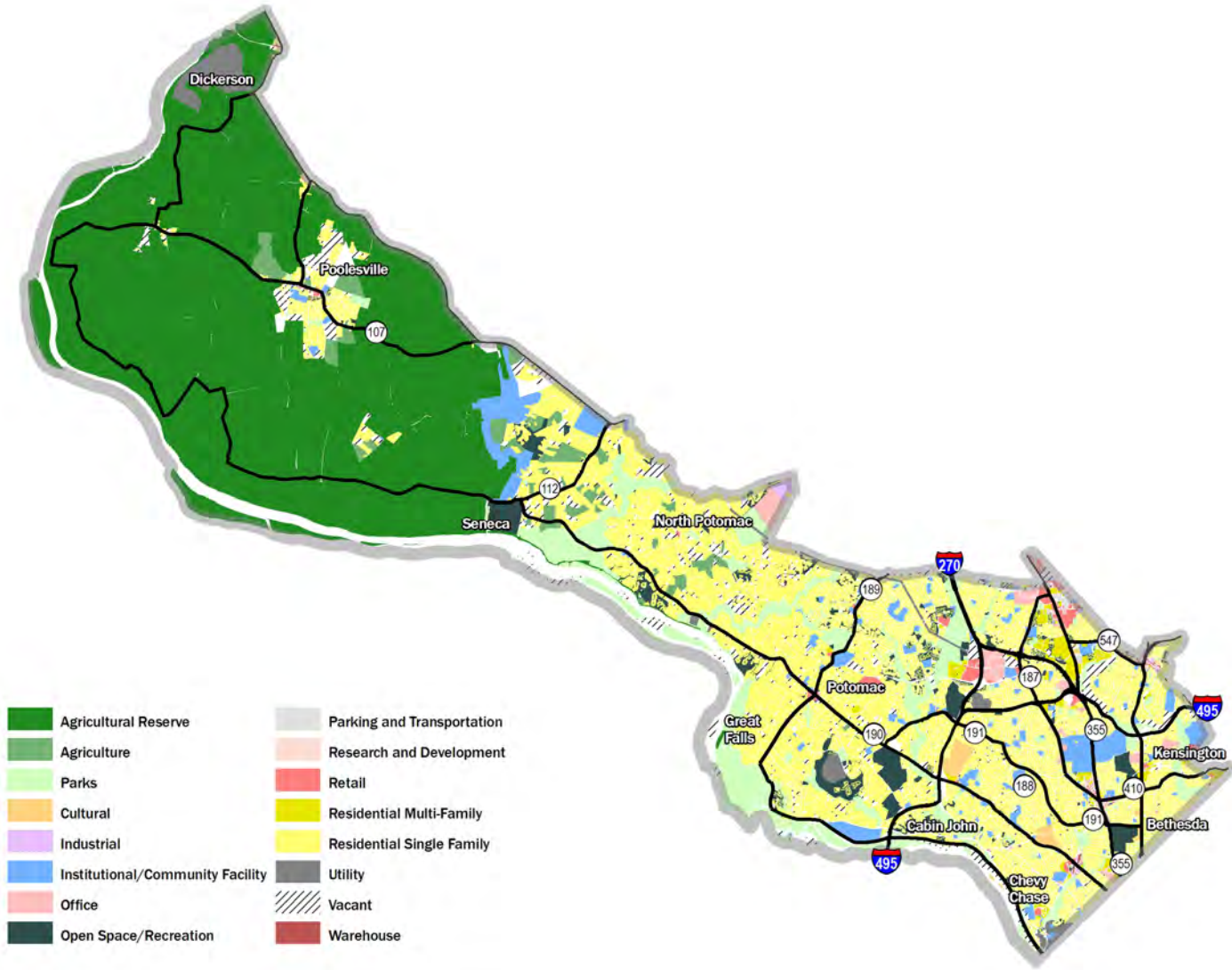
**zone**

**acres**

Agricultural	47,470.70
Central Business District	143.8
Commercial	428.6
Industrial	950.2
Planned Development	432.1
Residential Multifamily	555.6
Residential Multi-unit	64.4
Residential Single-Family Detached	37,881.10
Residential Single-Family Attached	42.6
Transit Station	57.7



district 1: land use



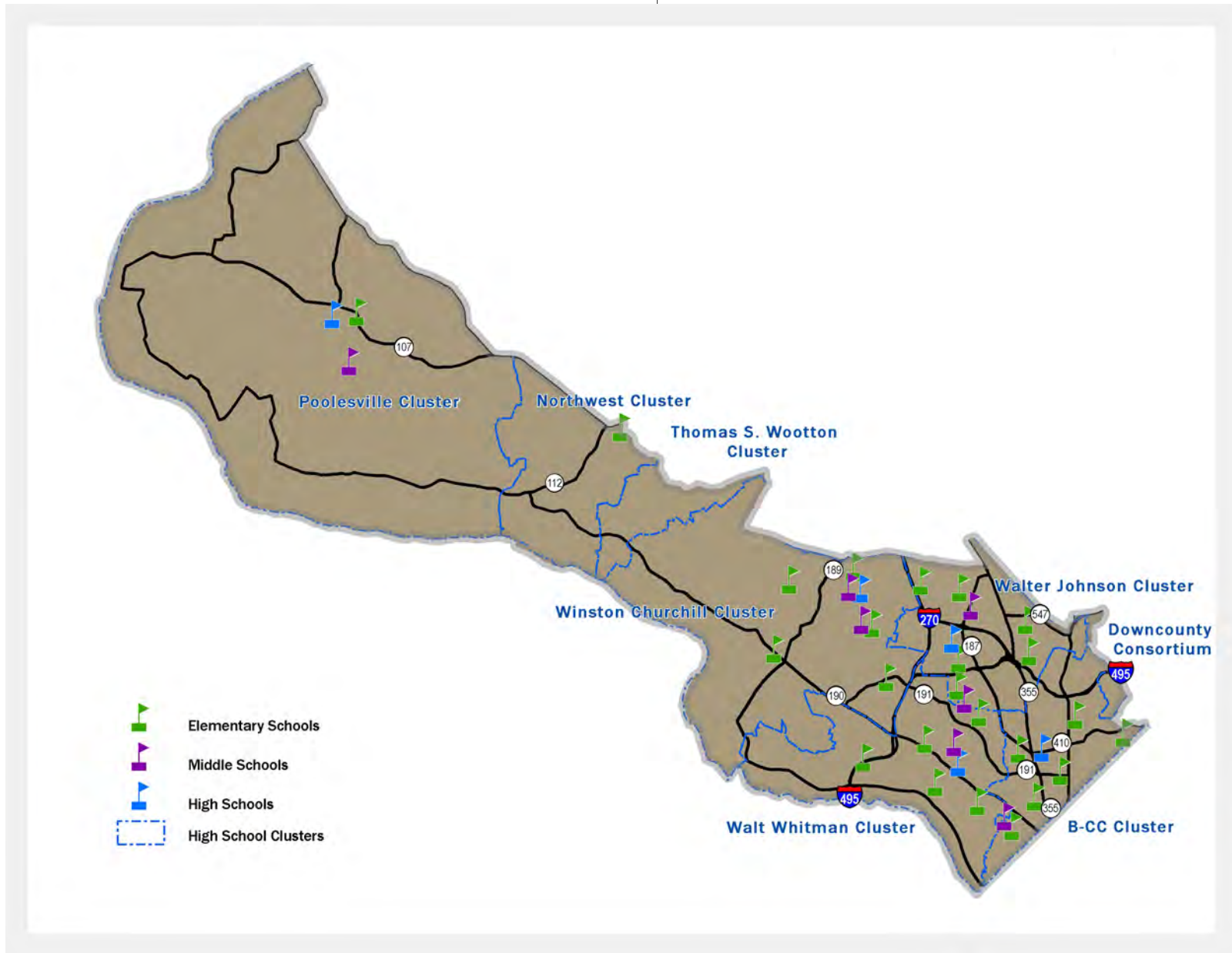
**land use**

**acres**

Residential Single-Family	25,176.80
Residential Multifamily	838.28
Retail	657
Office	858.6
Industrial	152
Agricultural Reserve	37,727.40
Agriculture	1,746
Cultural	398.3
Institutional/Community Facility	3,502.50
Open Space/Recreation	2,668.70
Parking and Transportation	165.8
Parks	7,103.10
Utility	1,340.90
Warehouse	51.4
Vacant	3,434.20



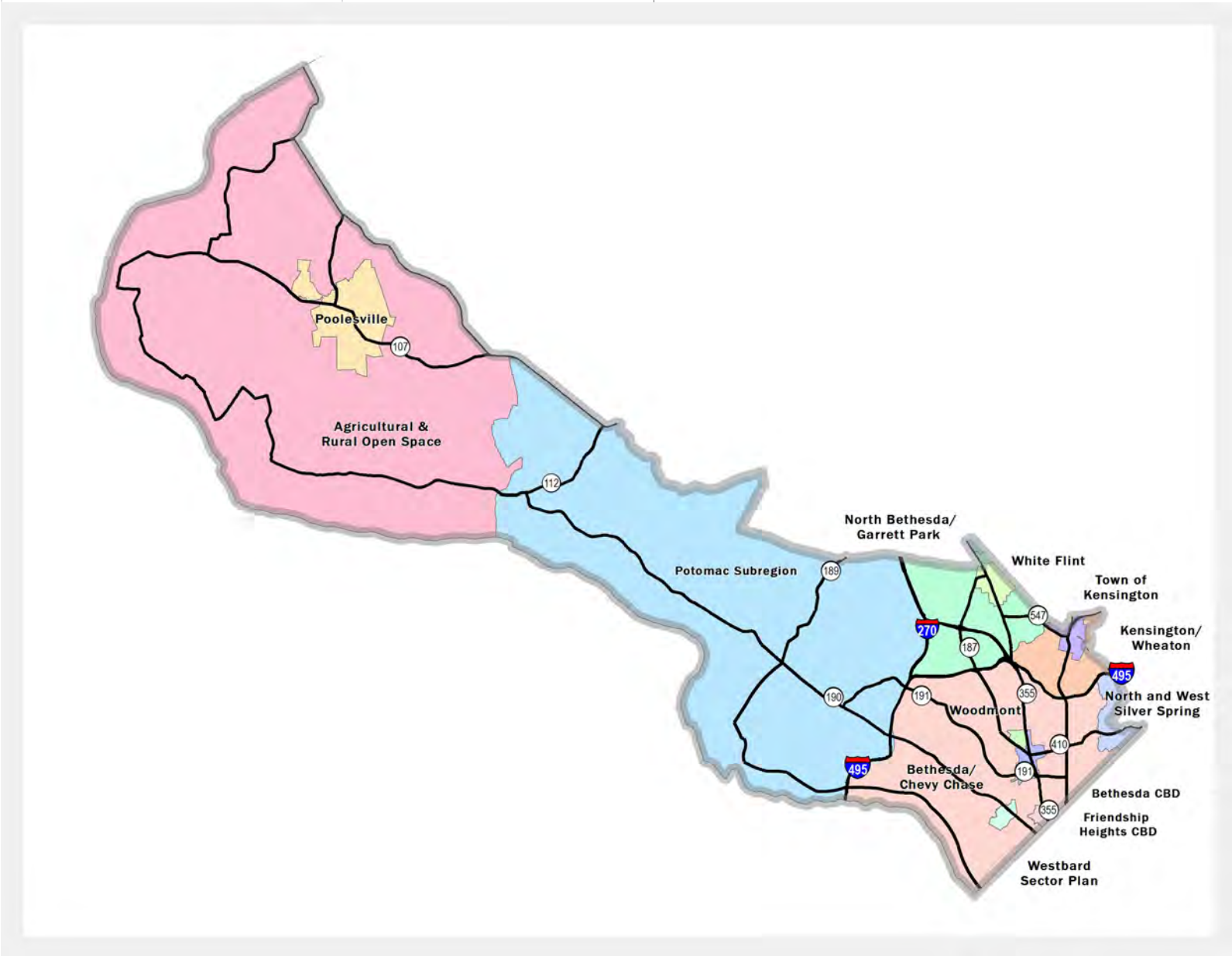




**schools**

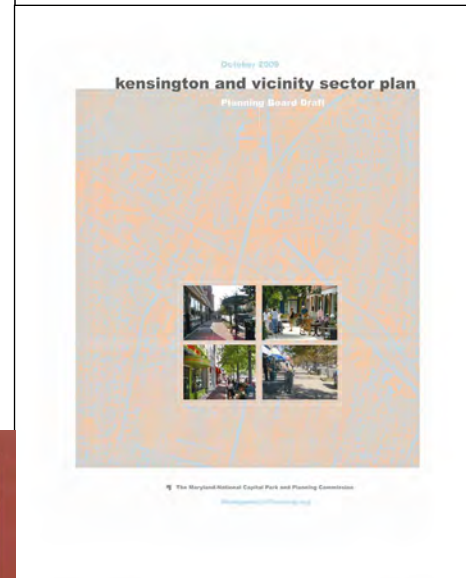
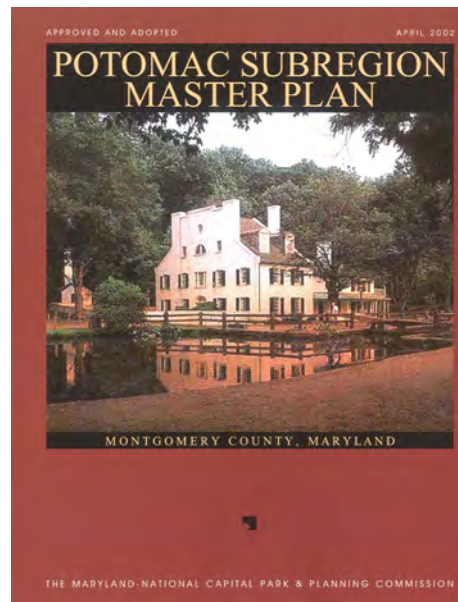
Elementary Schools	24
Middle Schools	7
High Schools	5





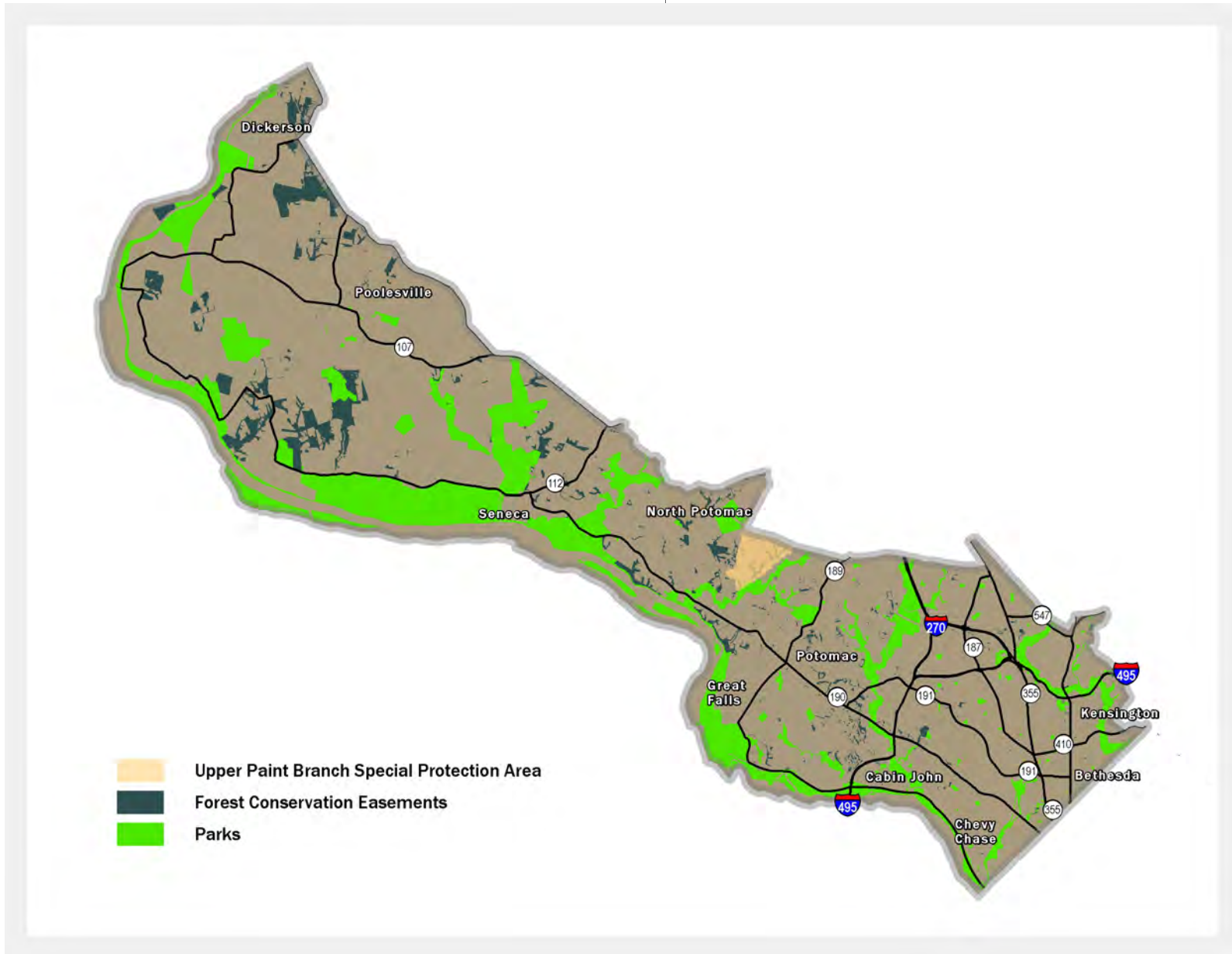
## master plans

Agricultural and Rural Open Space Master Plan (1980)  
Bethesda Central Business District Sector Plan (1994)  
Bethesda-Chevy Chase Master Plan (1990)  
Friendship Heights Sector Plan (1998)  
Kensington-Wheaton Master Plan (1989)  
North and West Silver Spring Master Plan (2000)  
North Bethesda-Garrett Park Master Plan (1992)  
Potomac Subregion Master Plan (2002)  
Kensington Sector Plan (1978)  
Westbard Sector Plan (1982)  
White Flint Sector Plan (2010)  
Woodmont Triangle Amendment to the Sector Plan for the Bethesda CBD (2006)





district 1: environmental features





**environmental features**

**acres**

**percent of total in district 1**

Forest Conservation Easements

4,628.3

32.2

Parks

16,743

26.3

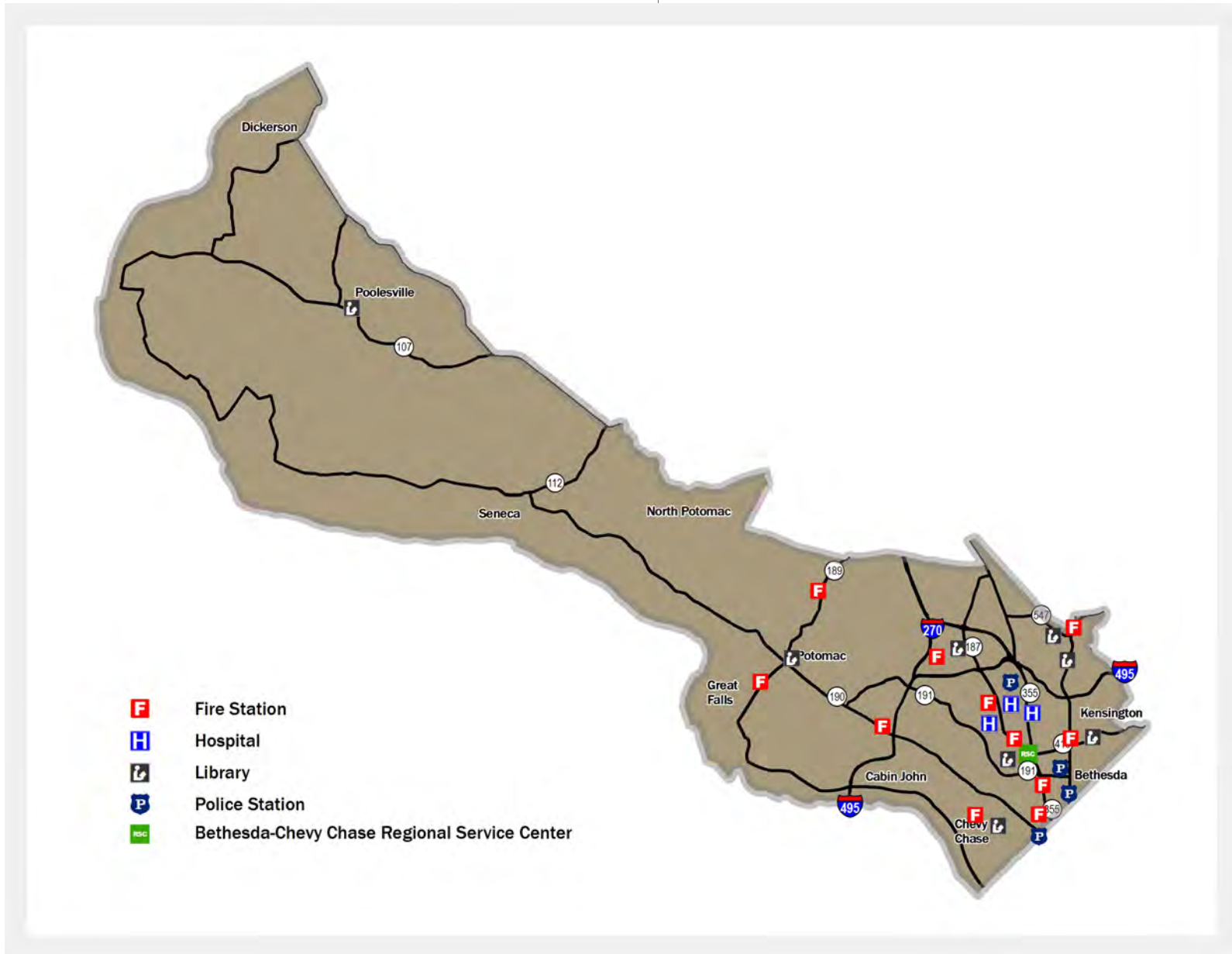
Piney Branch Special Protection Area

853.3

853.3



district 1: community facilities



**community facilities**

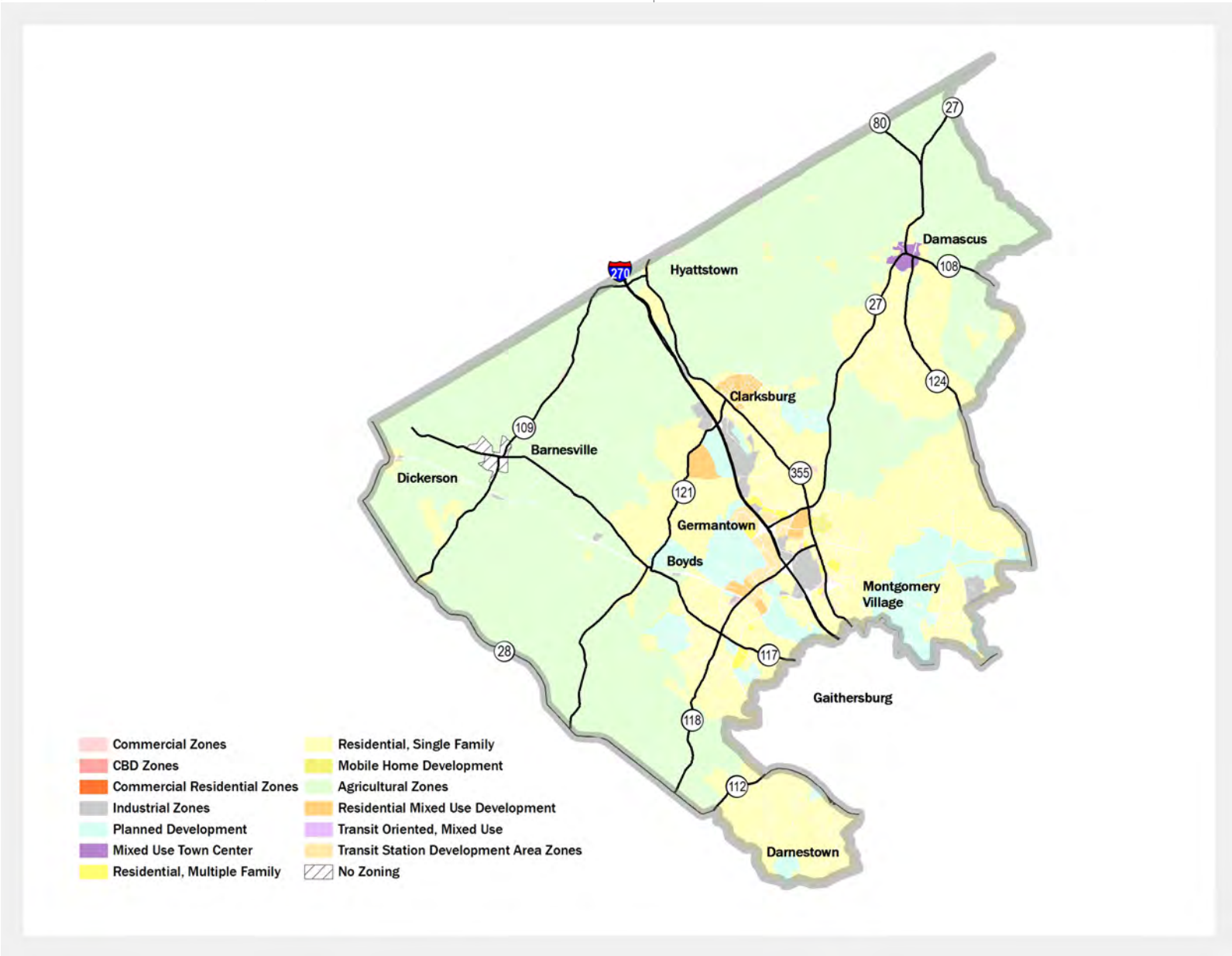
Fire stations	8
Hospitals	1
Libraries	2
Police stations	7









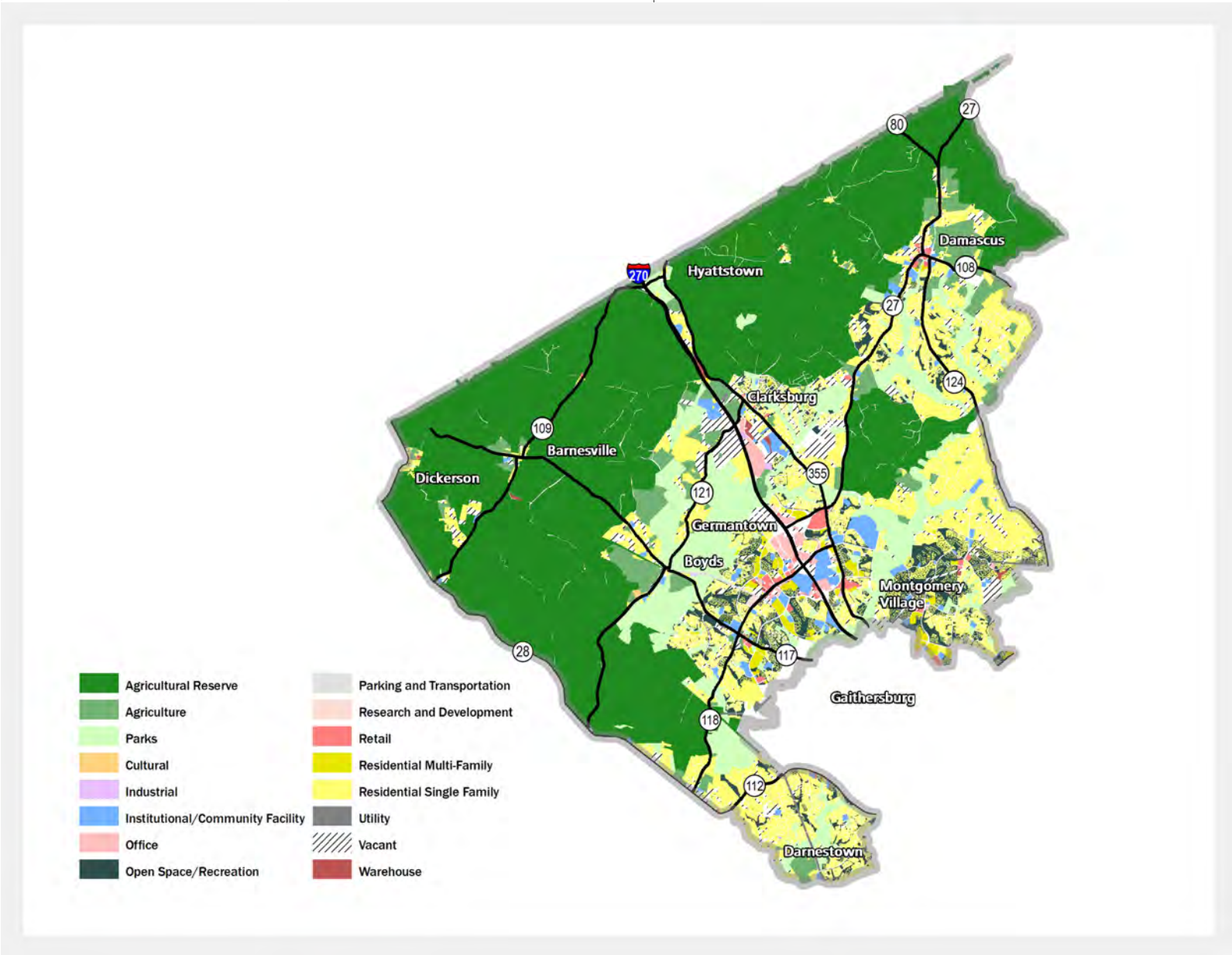


**zone**

**acres**

Agricultural	54,593.50
Commercial	160
Industrial	1,142.90
Planned Development	5,342.20
Residential Multifamily	274.8
Residential Multi-unit	826.3
Residential Single-Family Detached	25,211.70
Residential Single-Family Attached	459.4
Residential Mobile	76.7
Town Center Multi-unit	193.6
Transit Station	557.8





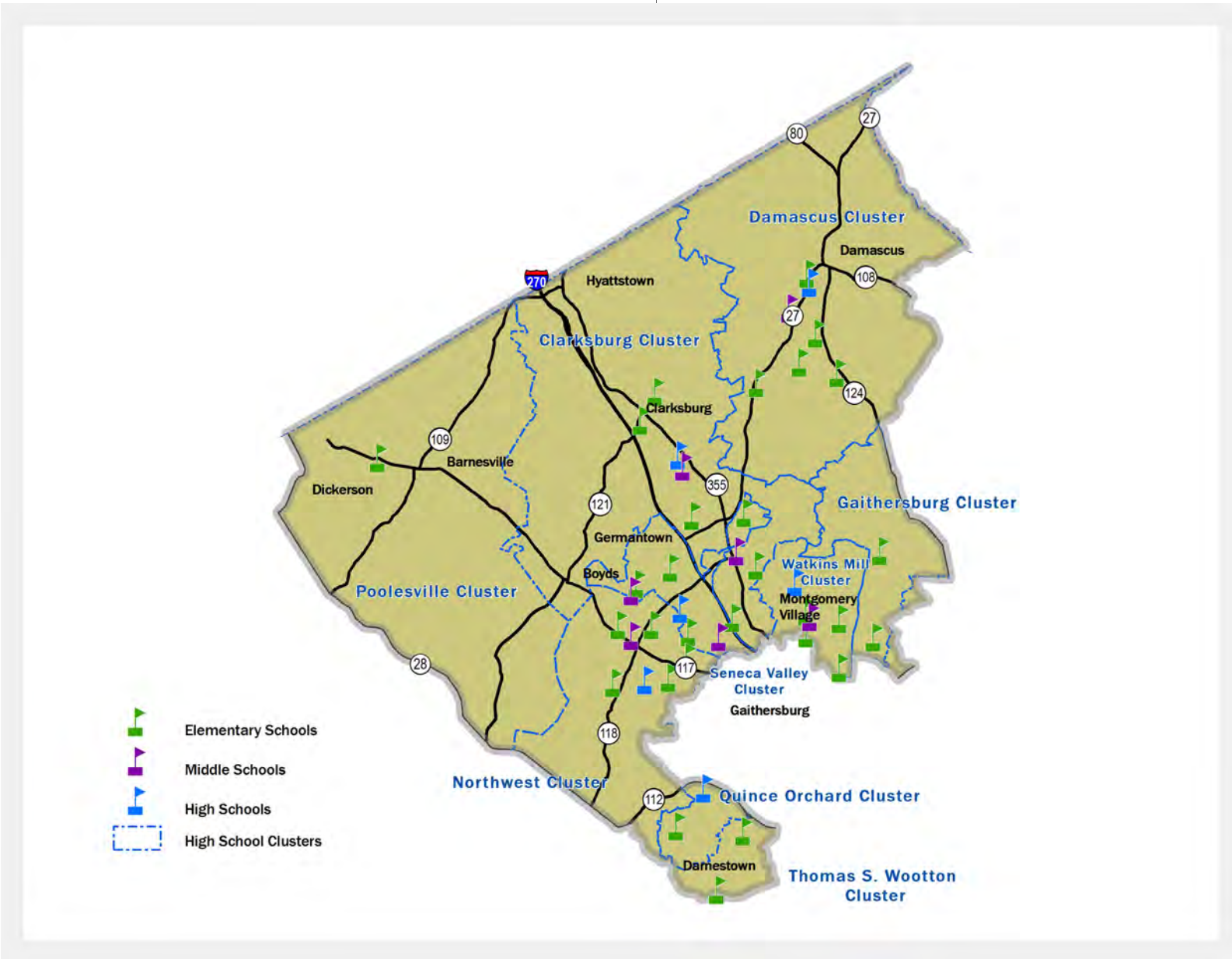


**land use**

**acres**

Residential Single-Family	16,010.20
Residential Multifamily	802.6
Retail	502.5
Office	583.2
Industrial	71.9
Agricultural Reserve	46,332.30
Agriculture	4230.3
Cultural	21.5
Institutional/Community Facility	1,731.50
Research and Development	42.90
Open Space/Recreation	3,775
Parking and Transportation	124.9
Parks	10,154.70
Utility	243.6
Warehouse	138
Vacant	3,625.50

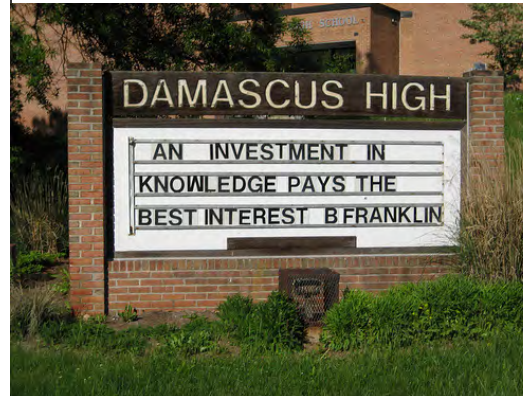




**schools**

Elementary Schools  
Middle Schools  
High Schools

29  
7  
6

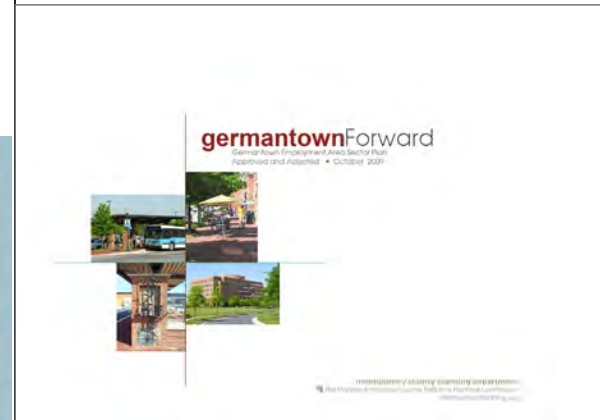
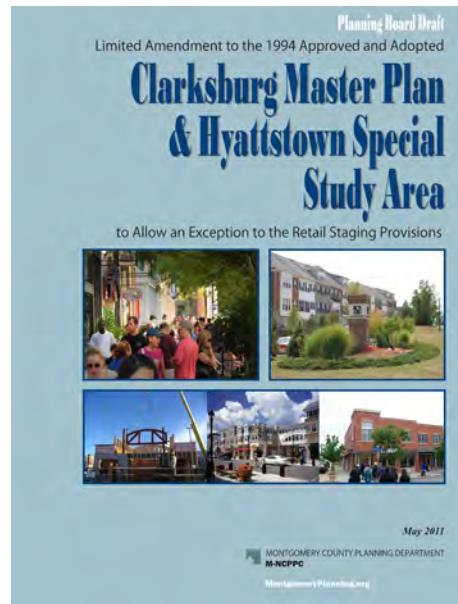




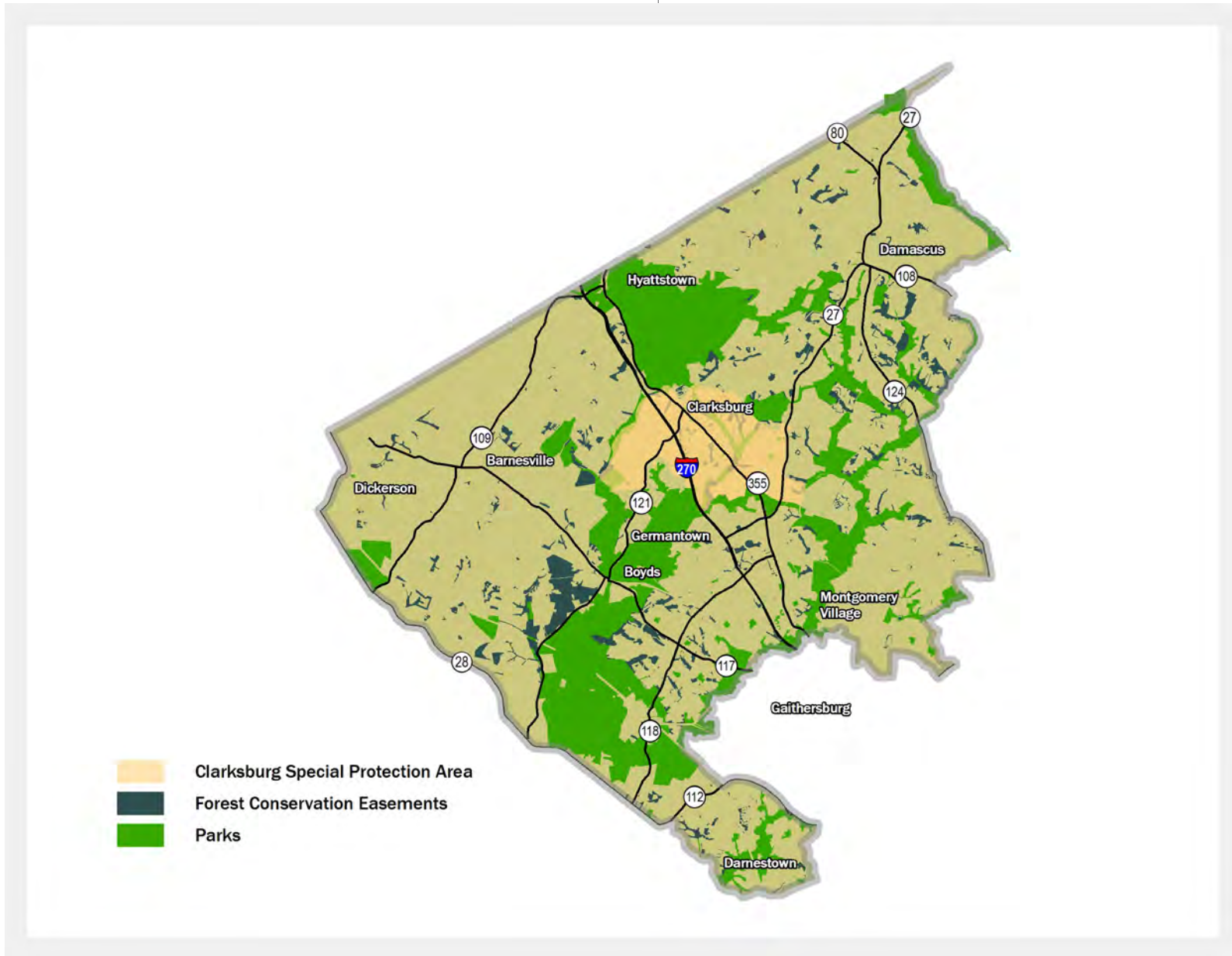


## master plans

Agricultural and Rural Open Space Master Plan (1980)  
Boyd's Master Plan (1985)  
Clarksburg Master Plan & Hyattstown Special Study Area (1994)  
Clarksburg Limited Master Plan Amendment (2011)  
Damascus (1982/1985; amended in 2006)  
Gaithersburg Vicinity Master Plan (1985; amended 1988 & 1990)  
Germantown Master Plan (1989)  
Germantown Master Plan (2009)  
Potomac Subregion Master Plan (2002)



district 2: environmental features



**Environmental Features**

**acres**

**percent of total in District 2**

Forest Conservation Easements

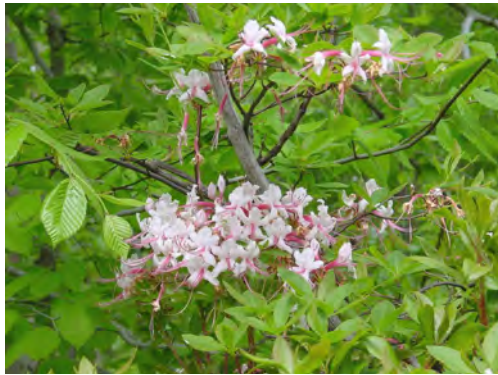
4,681.90

32.6

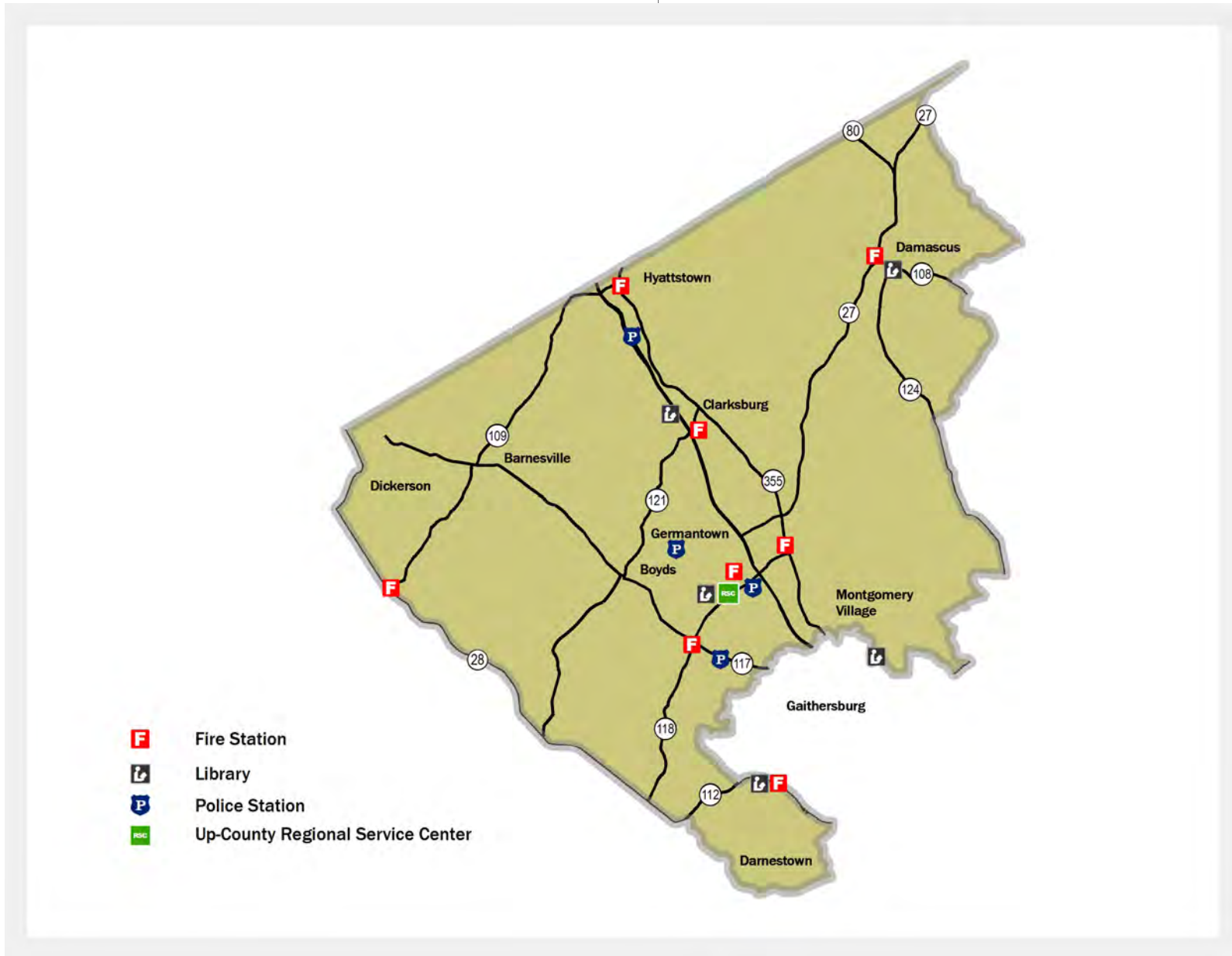
32.8

Parks

20,827



district 2: community facilities





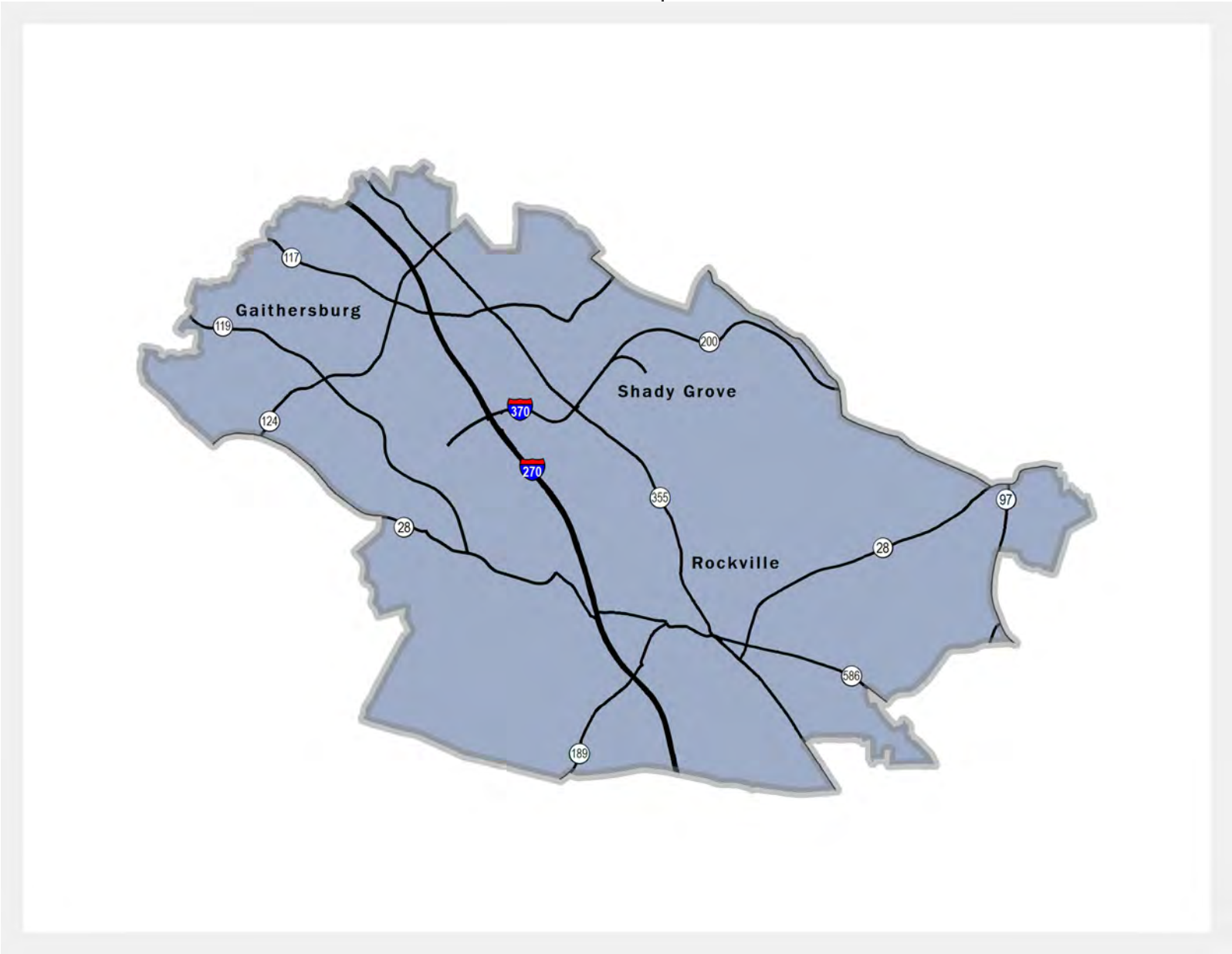
**community facilities**

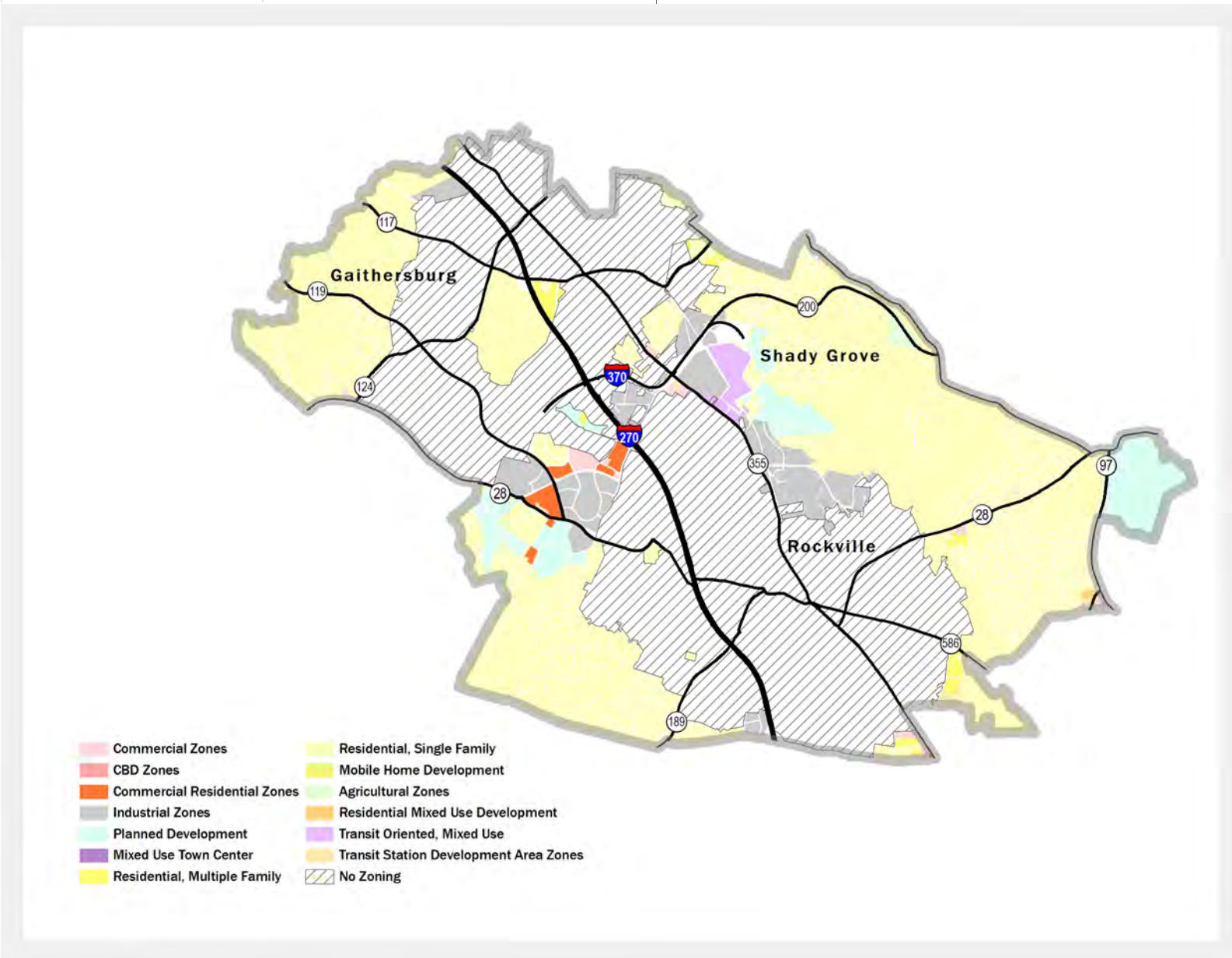
Fire stations  
Libraries  
Police stations

8  
5  
5









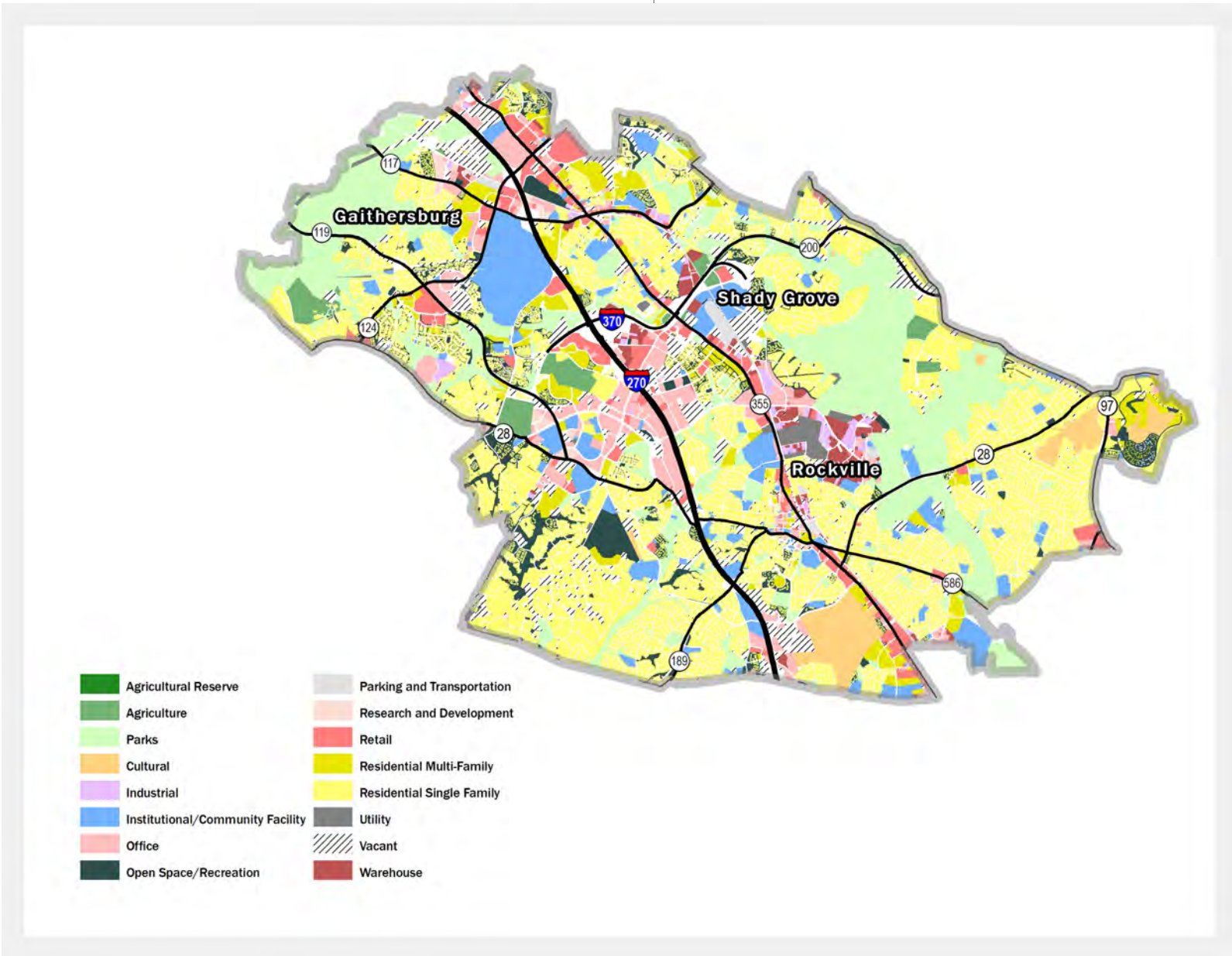
**zone**

**acres**

Agricultural	97.90
Commercial	185.4
Commercial Residential	155.8
Industrial	1,420.50
Planned Development	1,298.90
Residential Multifamily	190.9
Residential Multi-unit	34.4
Residential Single-Family Detached	12,081.90
Residential Single-Family Attached	74.3
Transit Station Mixed	201
Transit Station	36





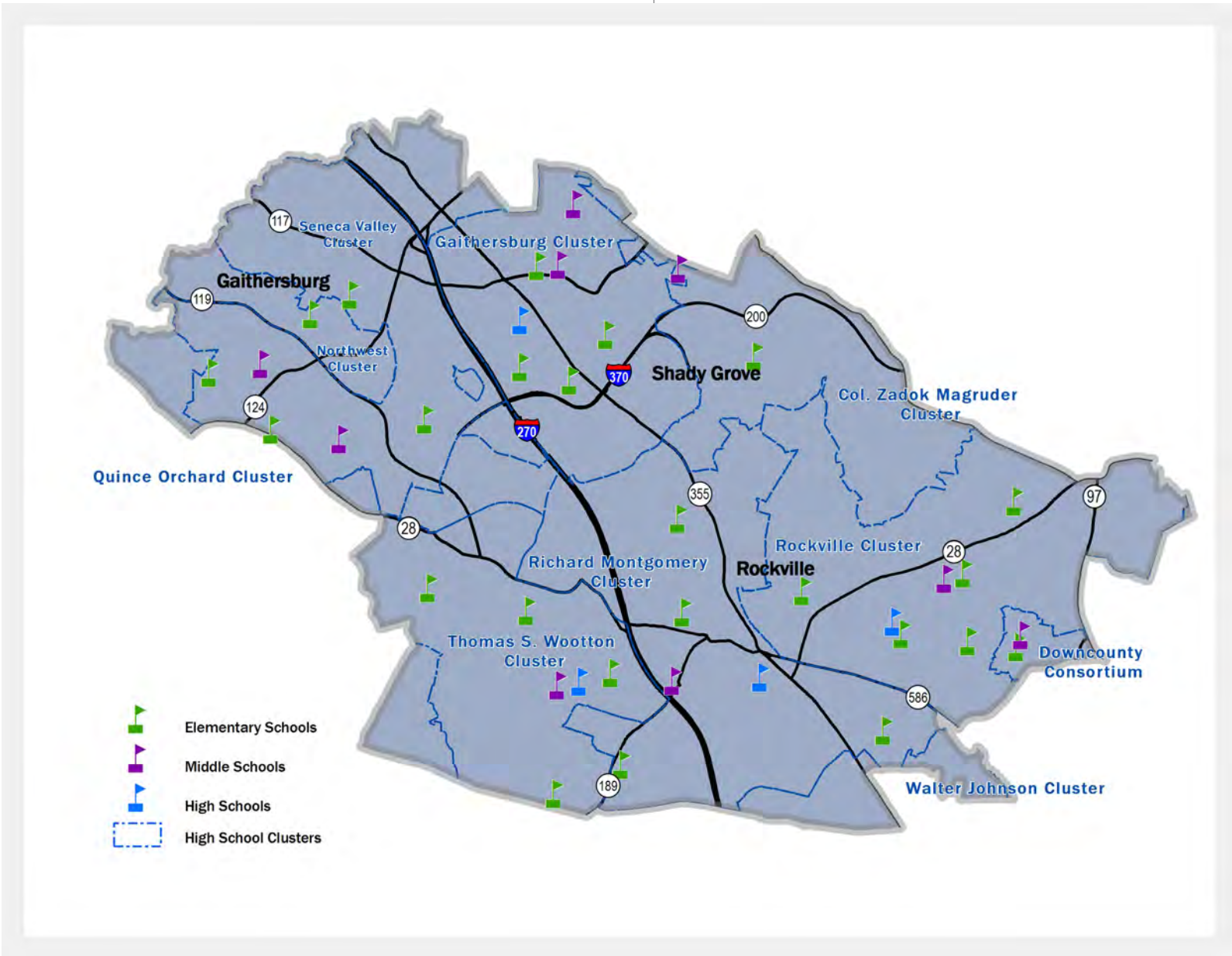


**land use**

**acres**

Residential Single-Family	9,992.00
Residential Multifamily	1,335
Retail	1,077.90
Office	1,458.10
Industrial	230.5
Agriculture	502.70
Cultural	768.1
Institutional/Community Facility	2,131.50
Research and Development	109.4
Open Space/Recreation	1,438.80
Parking and Transportation	185.9
Parks	6,749.4
Utility	270.9
Warehouse	424.1
Vacant	1,910.50







**schools**

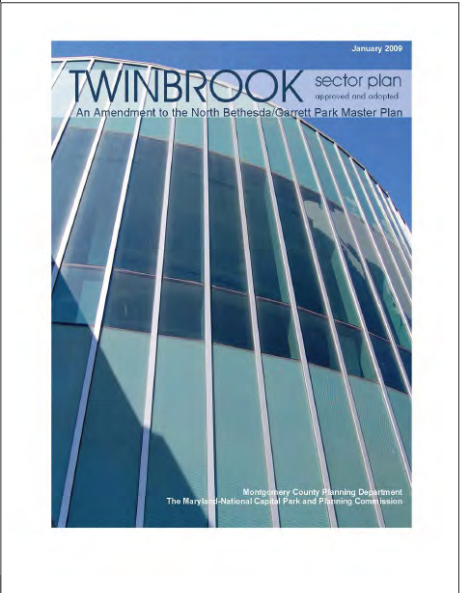
Elementary Schools	24
Middle Schools	9
High Schools	4



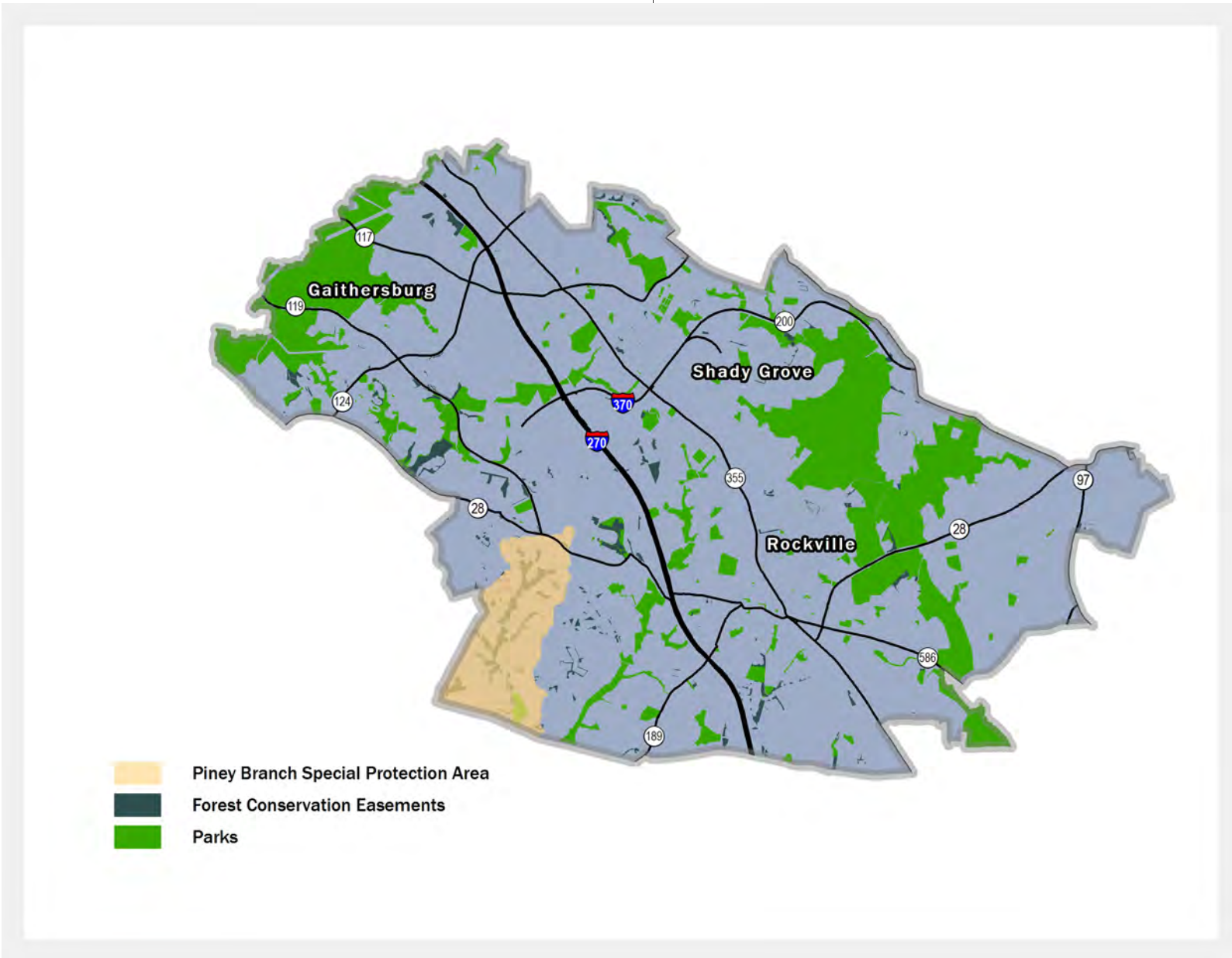


**master plans**

- Aspen Hill Master Plan (1994)
- Gaithersburg Vicinity Master Plan (1985; amended 1988 & 1990)
- Great Seneca Science Corridor (2010)
- North Bethesda-Garrett Park Master Plan (1992)
- Potomac Subregion (2002)
- Shady Grove Sector Plan (2006)
- Twinbrook Sector Plan (2009)
- Upper Rock Creek Master Plan (2004)



district 3: environmental features





**environmental features**

**acres**

**percent of total in district 3**

Forest Conservation Easements

655.90

4.6

Parks

6,218

9.8

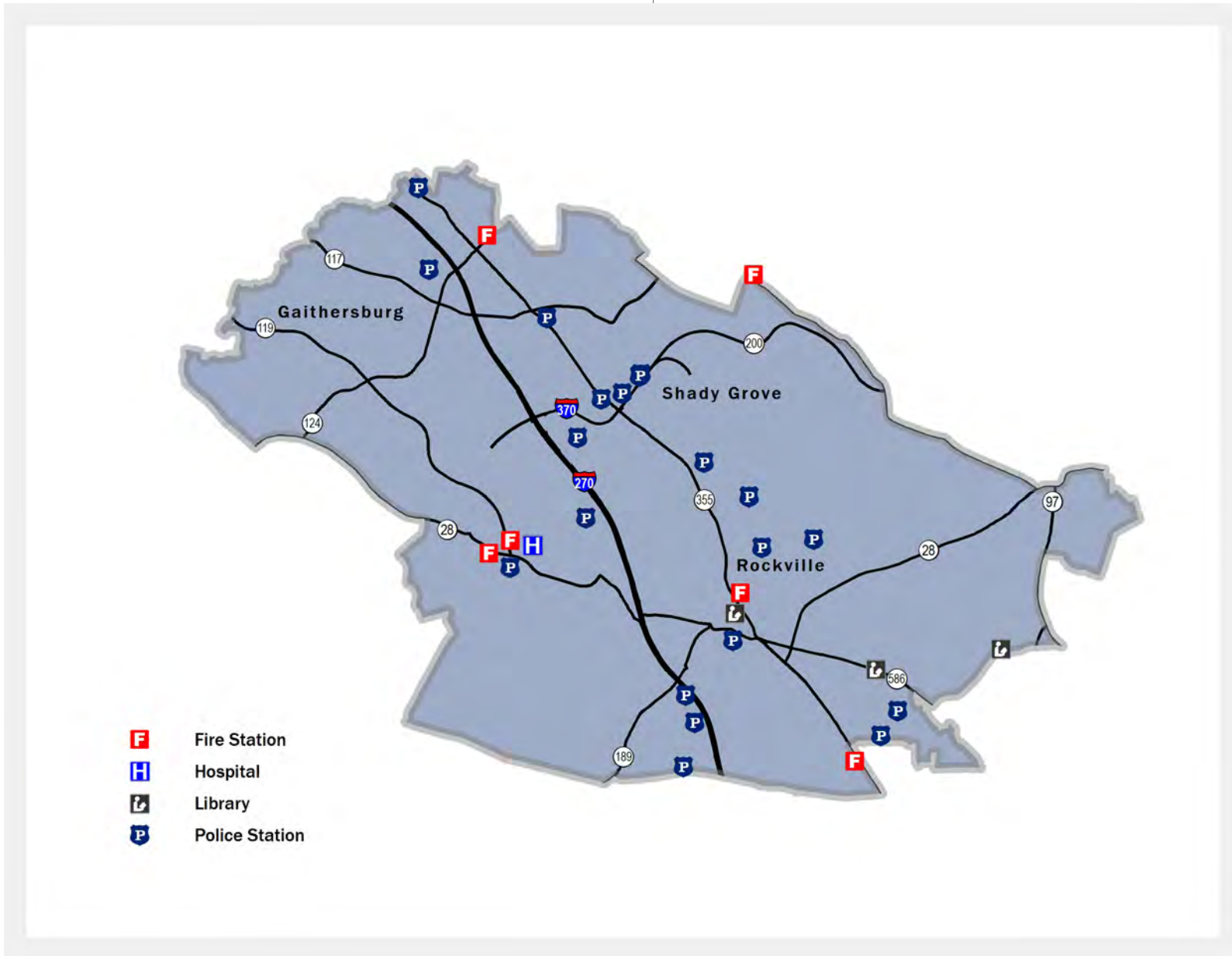
Piney Branch Special Protection Area

1,516.30





district 3: community facilities

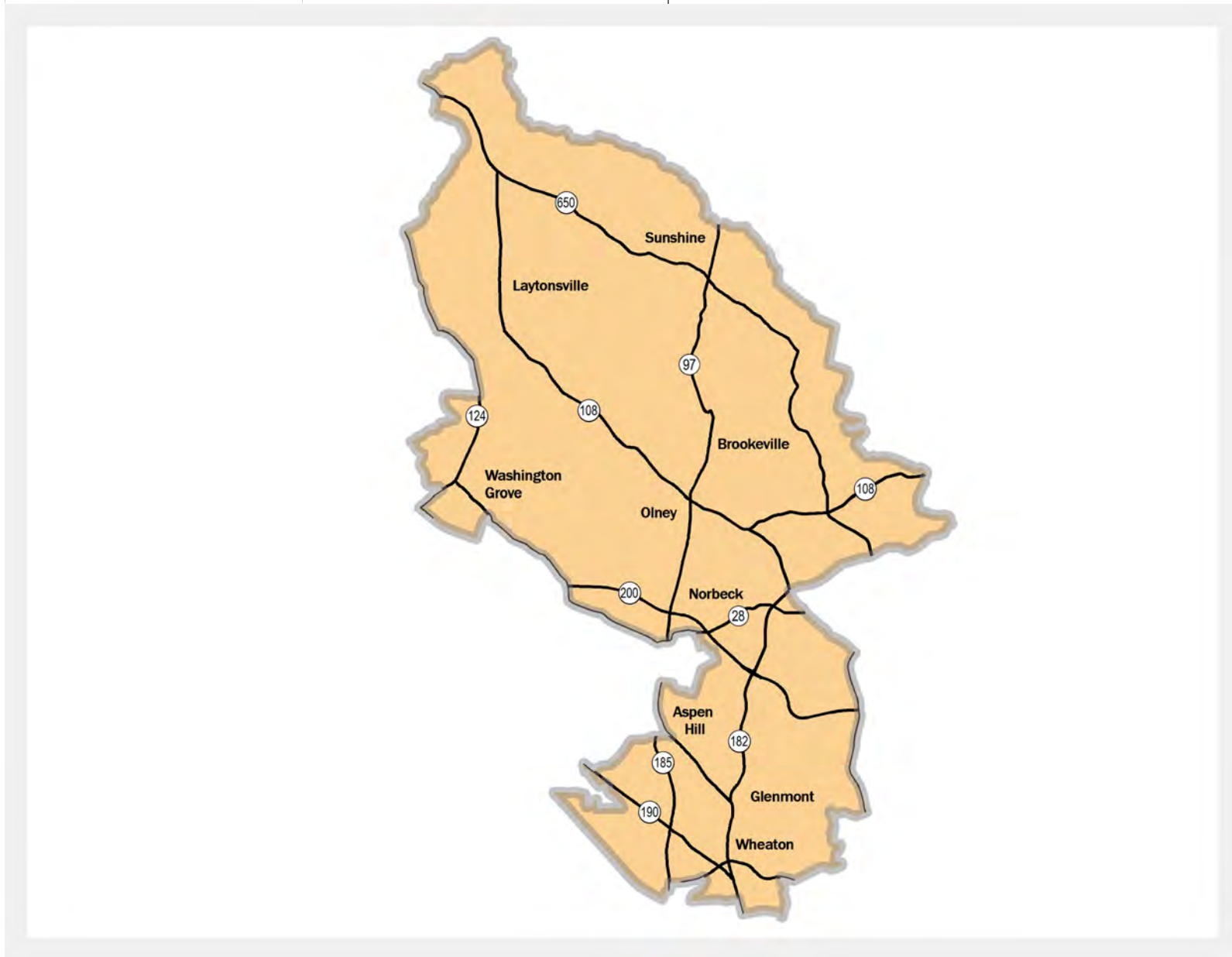


**community facilities**

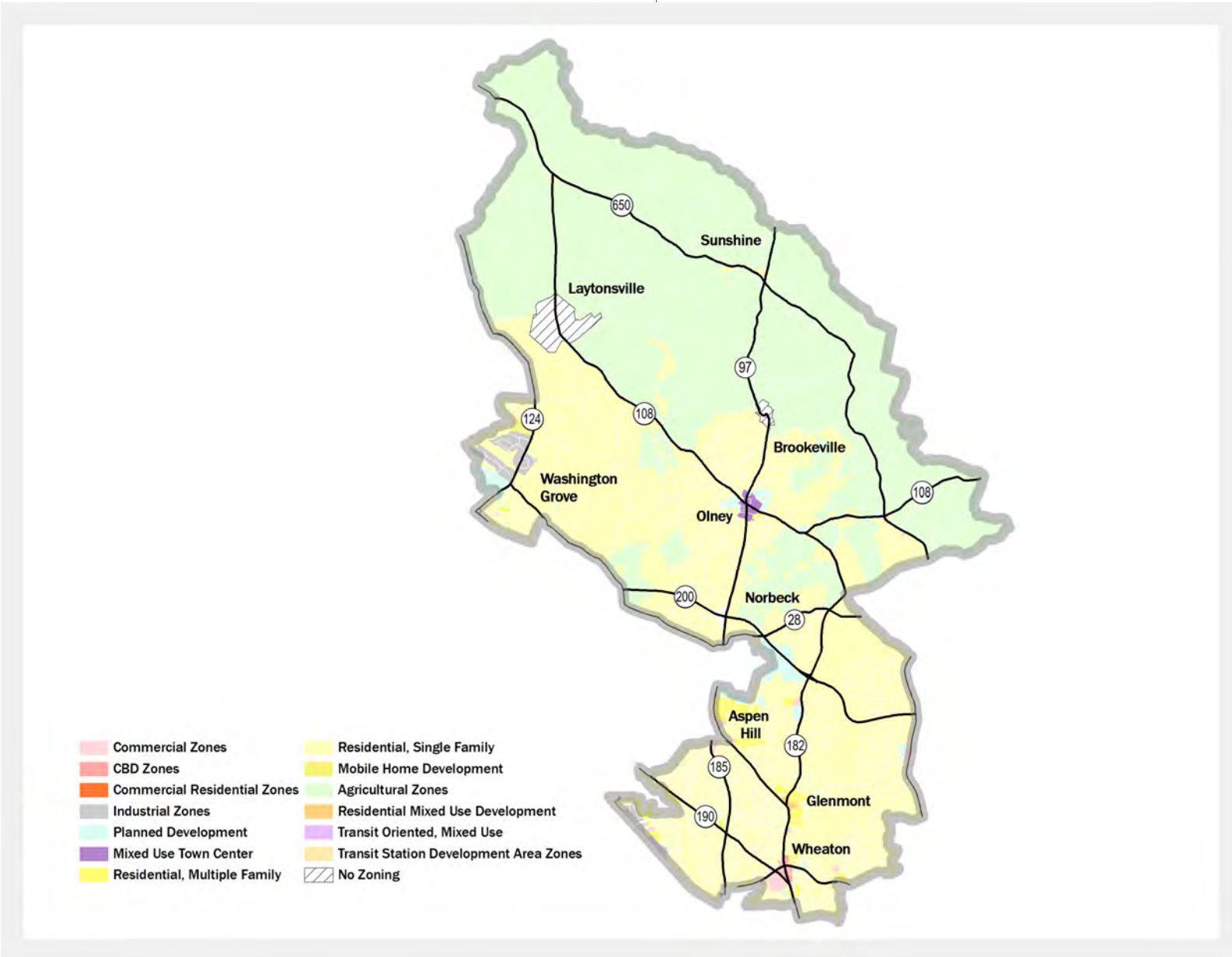
Fire stations	6
Hospitals	1
Libraries	3
Police stations	23









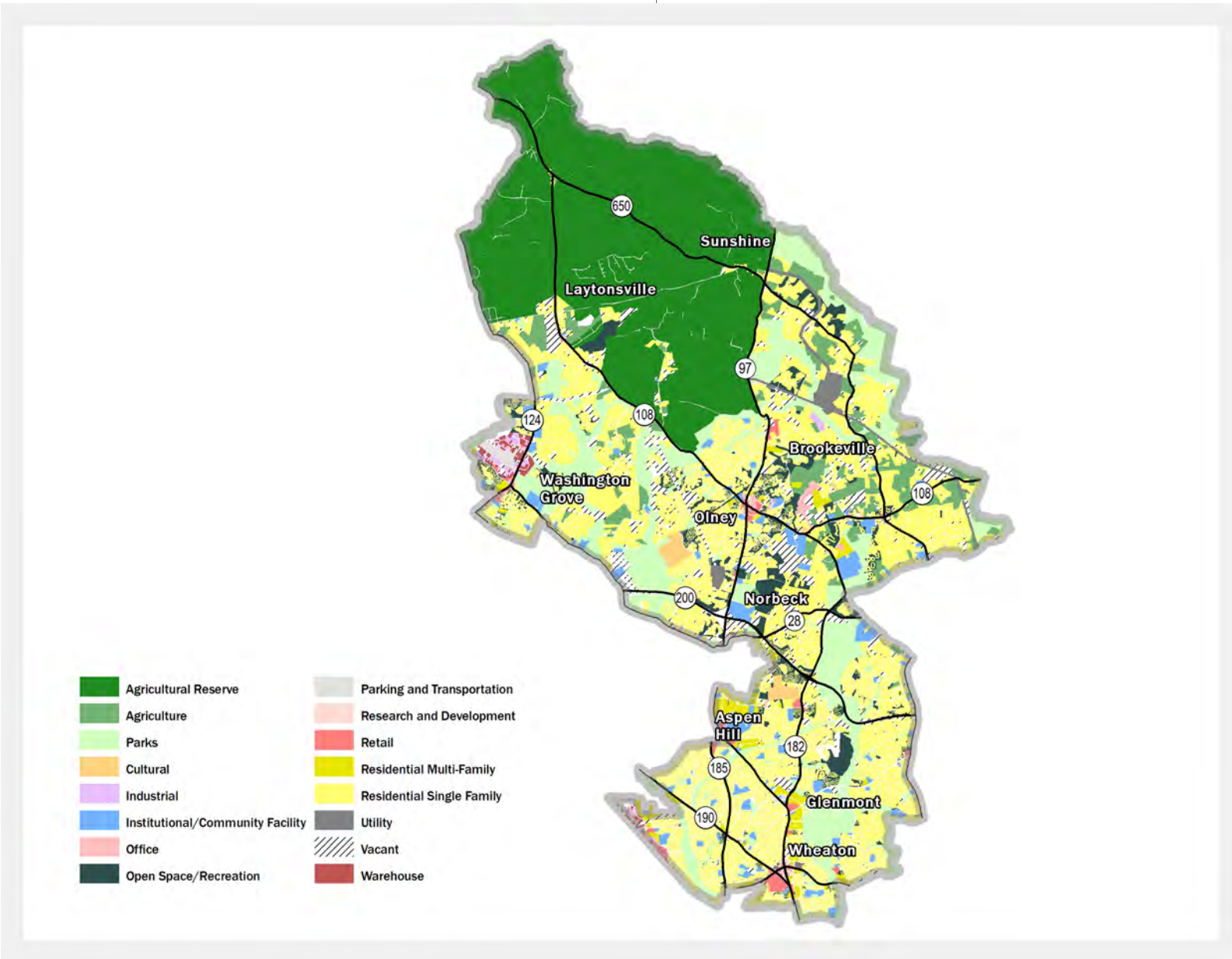


**zone**

**acres**

Agricultural	32,602.30
Central Business District	56.3
Commercial	302.1
Industrial	504.2
Planned Development	754.8
Residential Multifamily	588.9
Residential Multi-unit	26.6
Residential Single-Family Detached	26,106.2
Residential Single-Family Attached	95.6
Mixed Use Town Center	104.9
Transit Station	36.6







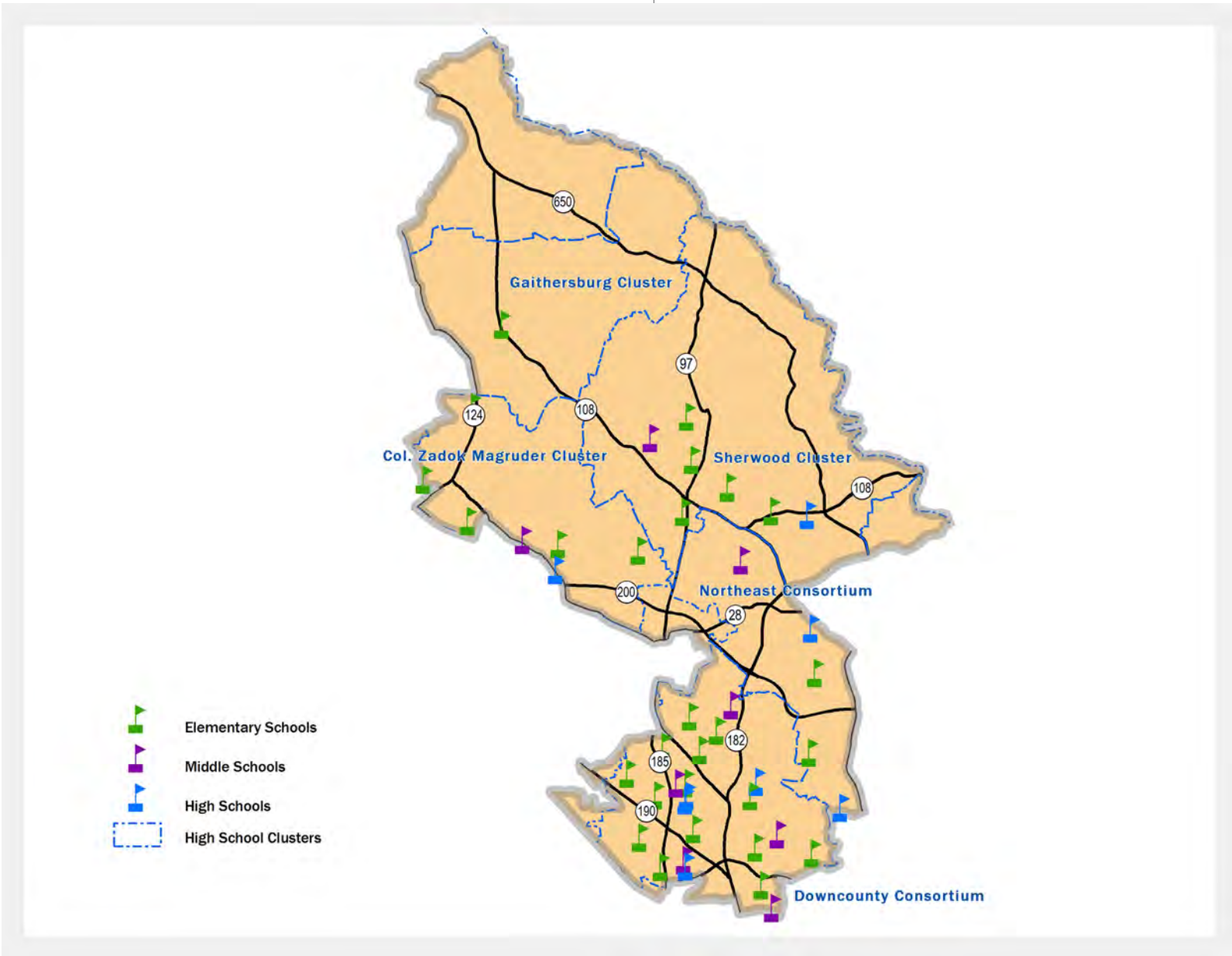
**land use**

**acres**

Residential Single-Family	25,824.70
Residential Multifamily	874.1
Retail	487.4
Office	431.1
Industrial	261.9
Agriculture	14,091.20
Cultural	512.4
Institutional/Community Facility	1,879.70
Open Space/Recreation	3,669.70
Parking and Transportation	194.9
Parks	754.8
Utility	907.4
Warehouse	225.8
Vacant	12,410.20





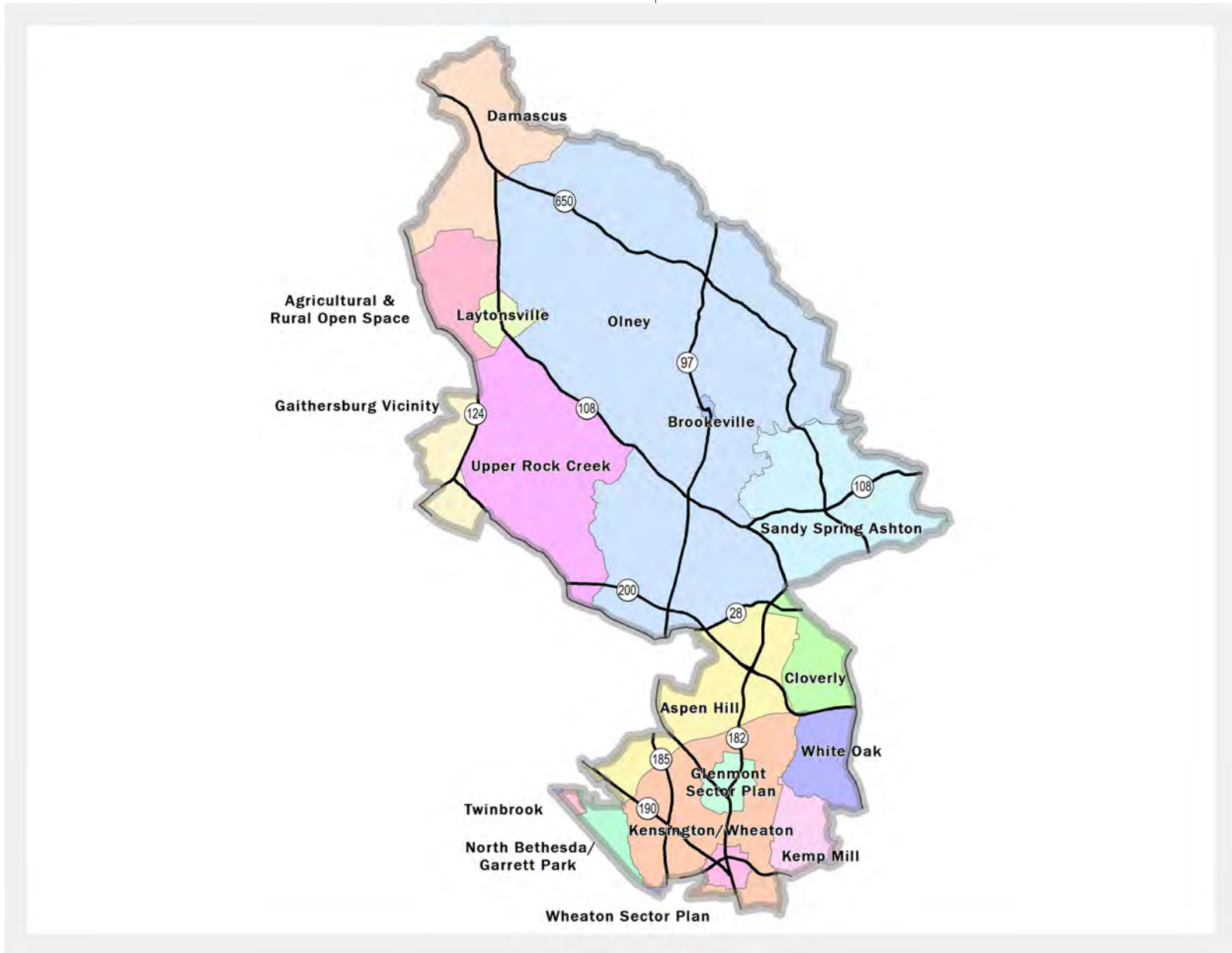


**schools**

Elementary Schools  
Middle Schools  
High Schools

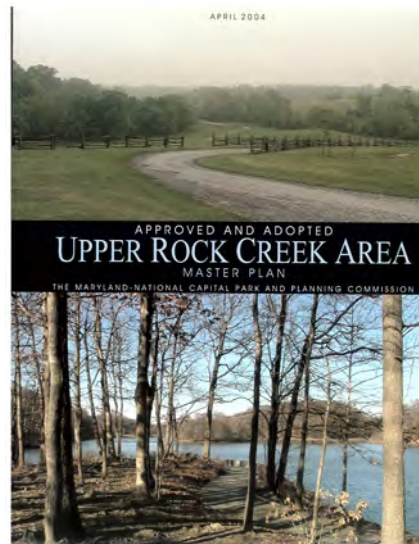
27  
8  
8





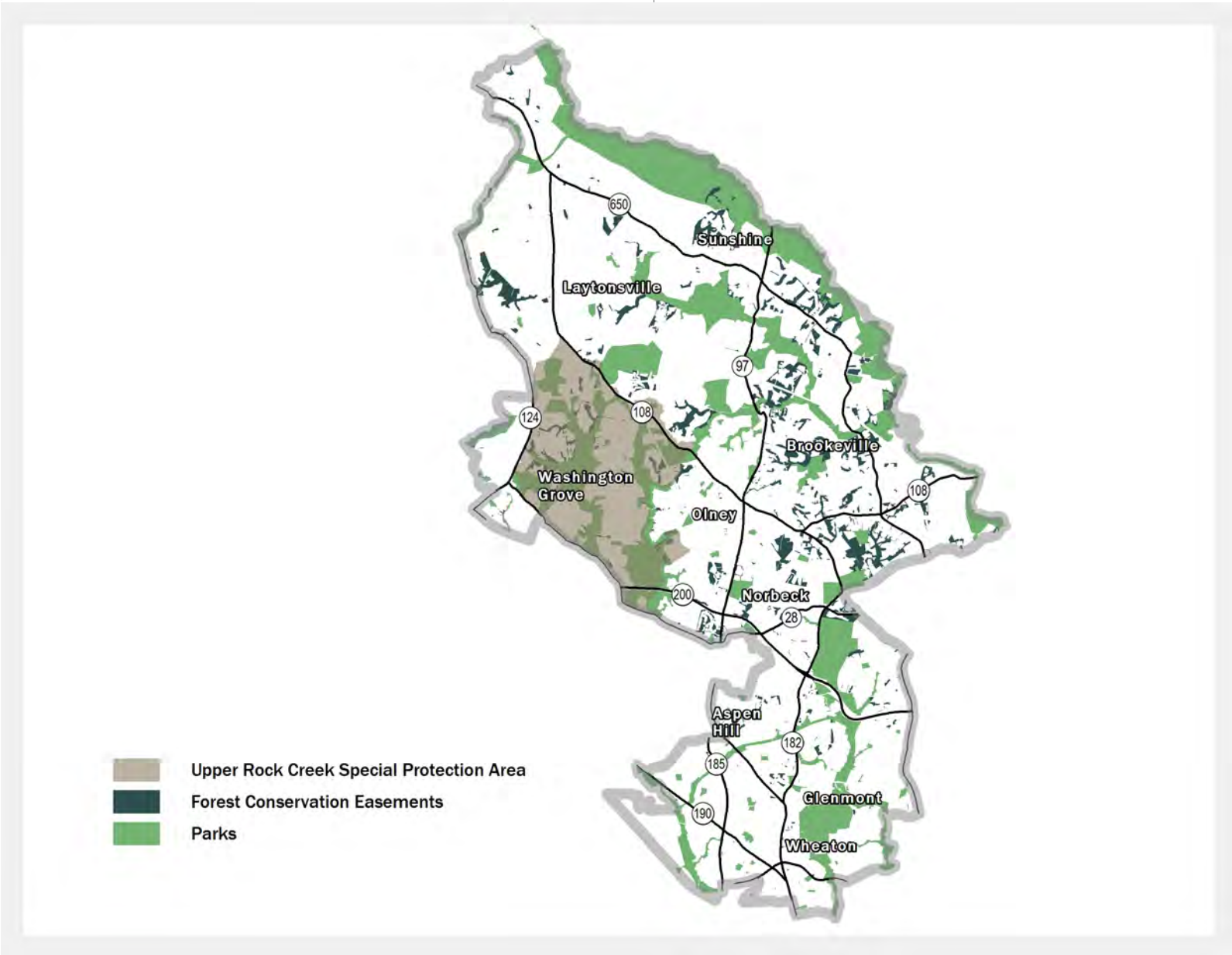
## master plans

Agricultural and Rural Open Space (1980)  
Aspen Hill Master Plan (1994)  
Cloverly Master Plan (1997)  
Damascus Master Plan (2006)  
Gaithersburg Vicinity Master Plan (1985; amended 1988 & 1990)  
Glenmont Sector Plan (1997)  
Kemp Mill Master Plan (2001)  
Kensington-Wheaton Master Plan (1989)  
North Bethesda-Garrett Park Master Plan (1992)  
Olney Master Plan (2005)  
Sandy Spring-Ashton Master Plan (1998)  
Twinbrook Sector Plan (2009)  
Upper Rock Creek Master Plan (2004)  
Wheaton Central Business District and Vicinity Sector Plan (1990; limited amendment 2008)  
White Oak Master Plan (1997)





district 4: environmental features





**environmental features**

**acres**

**percent of total in district 4**

Forest Conservation Easements

3,559.50

24.8

Parks

14,088 22.2

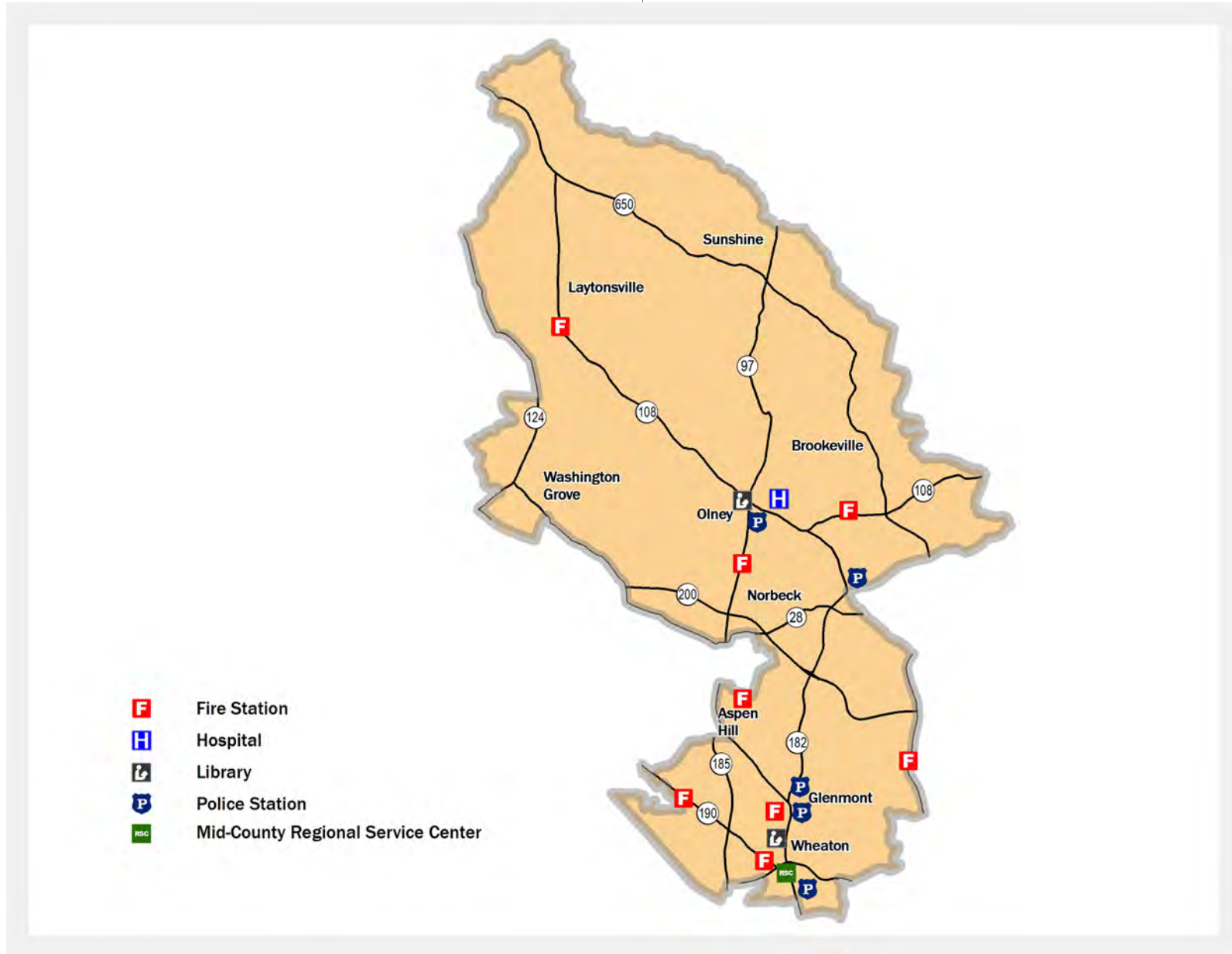
22.2

Upper Rock Creek Special Protection Area

7,688.10



district 4: community facilities



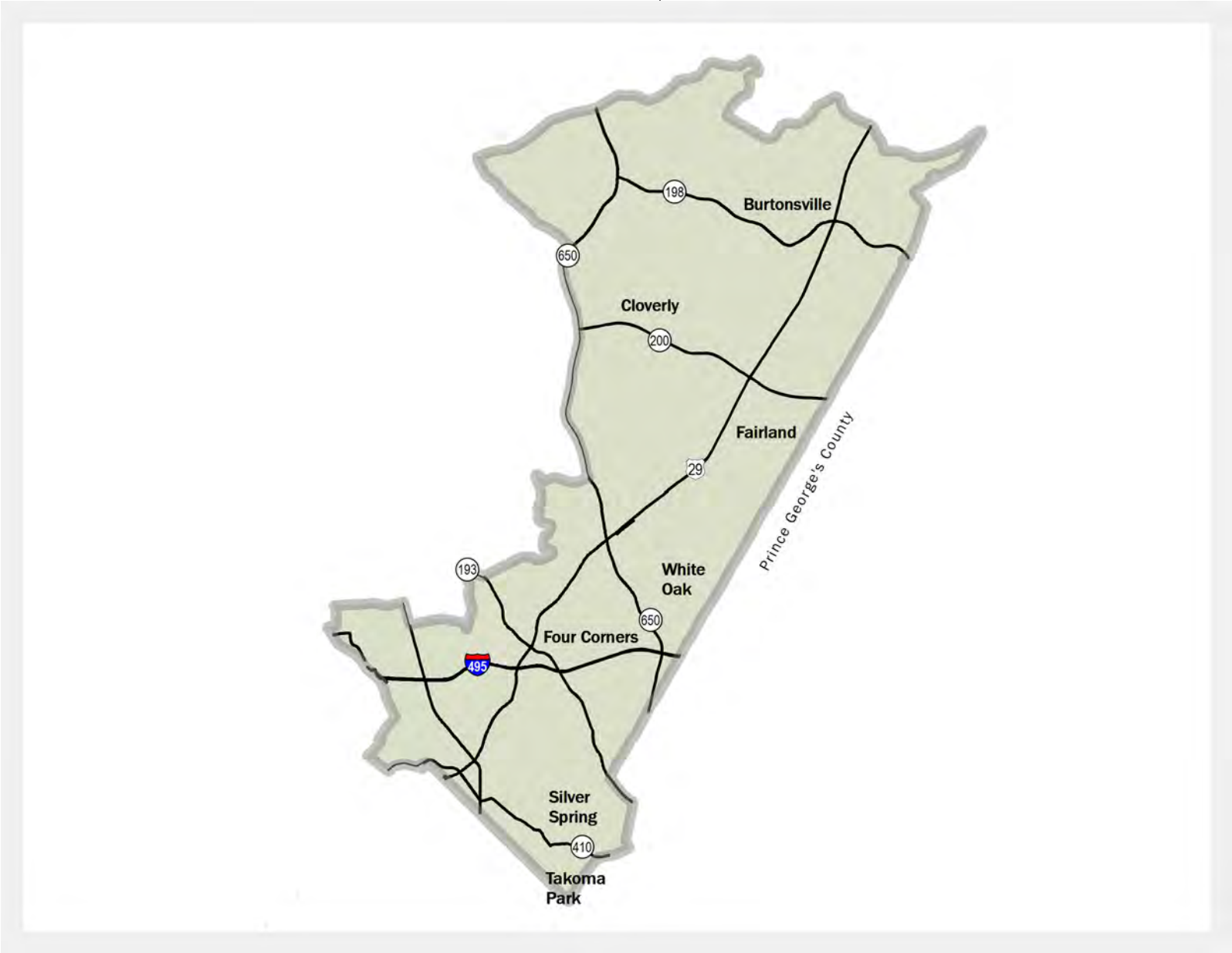
**community facilities**

Fire stations  
Hospitals  
Libraries  
Police stations

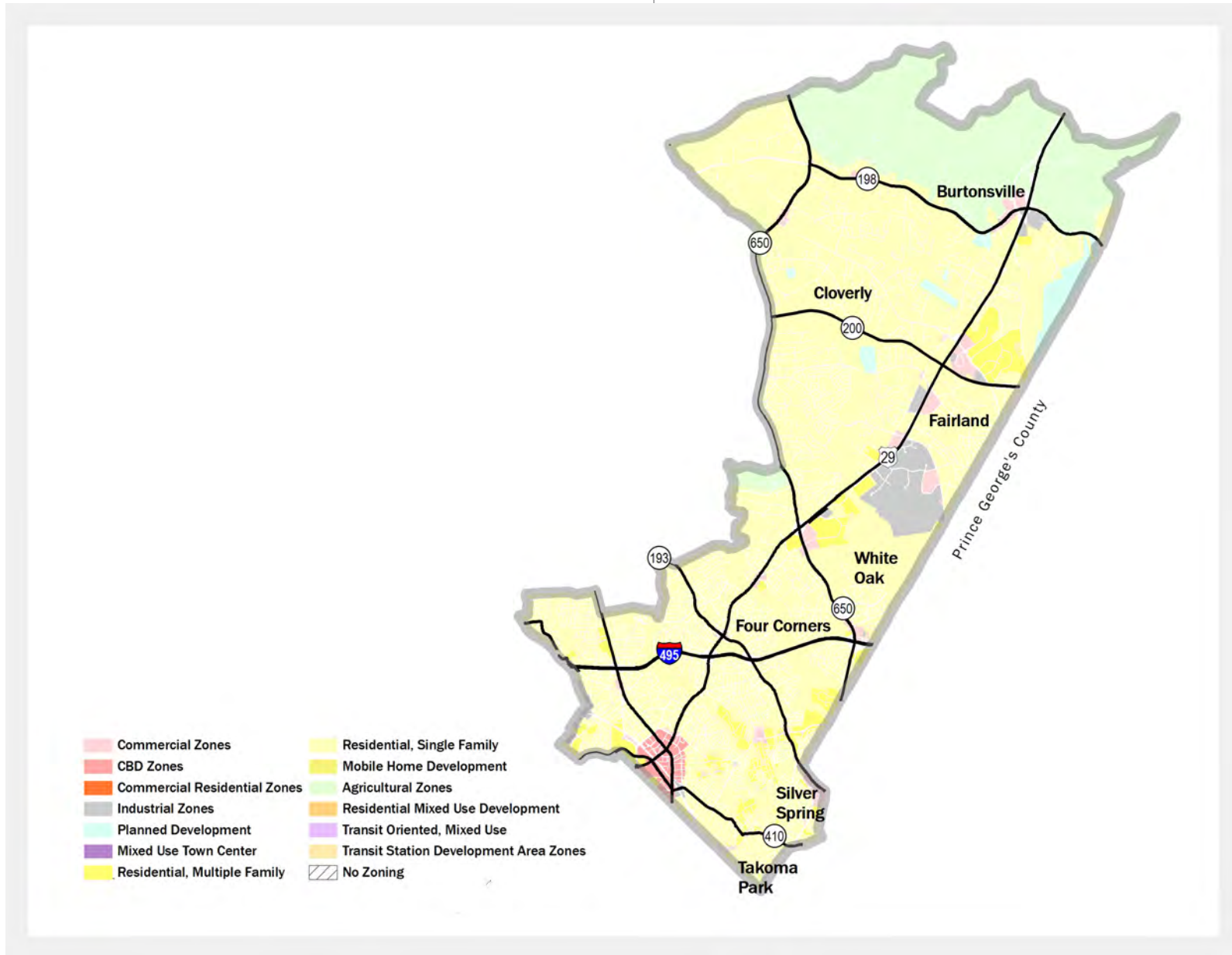
8  
1  
2  
7









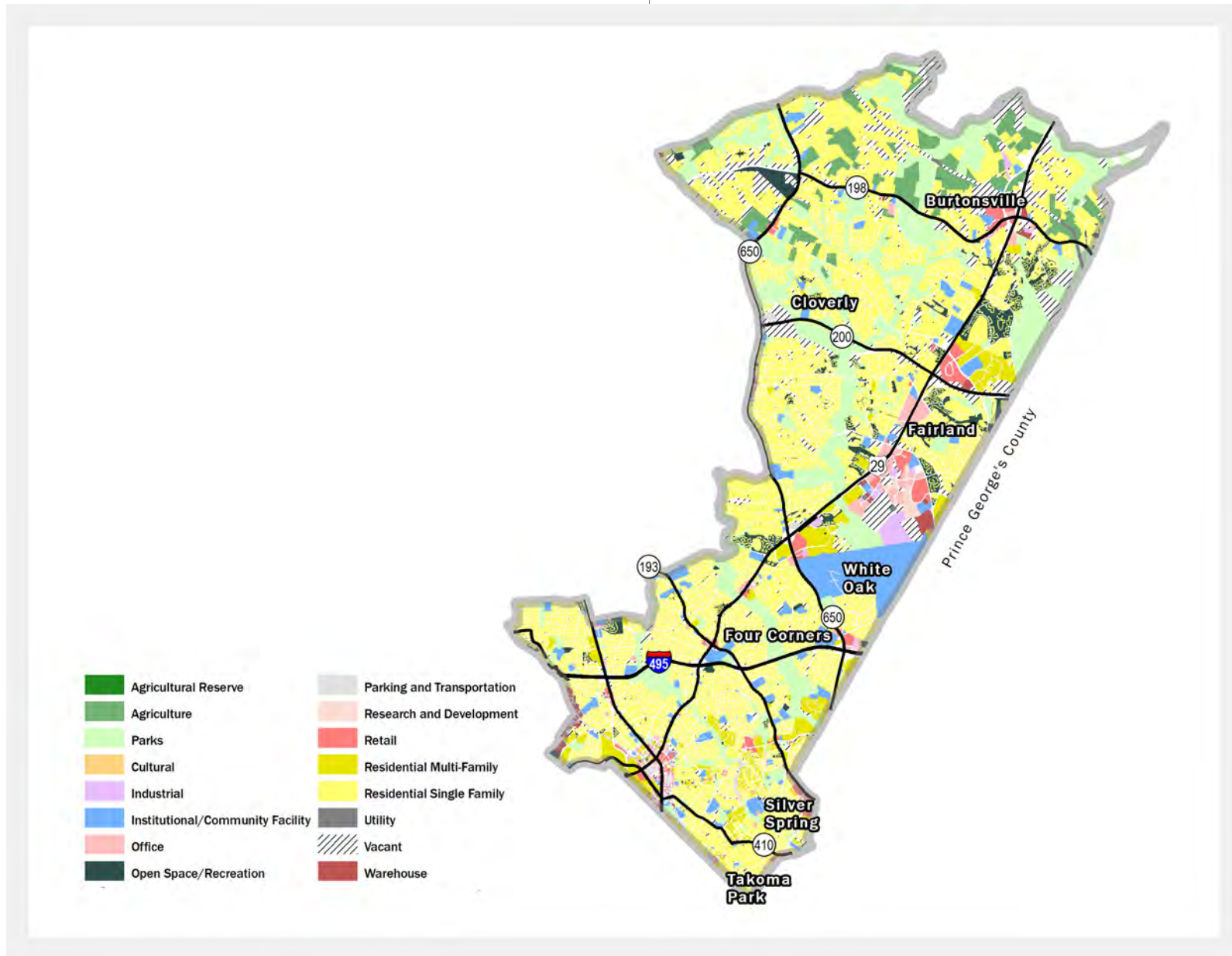


**zone**

**acres**

Agricultural	4,482.00
Central Business District	220.7
Commercial	534.1
Industrial	821.6
Planned Development	438.4
Residential Multifamily	1,136.60
Residential Single-Family Detached	17,482.10
Residential Single-Family Attached	183.5







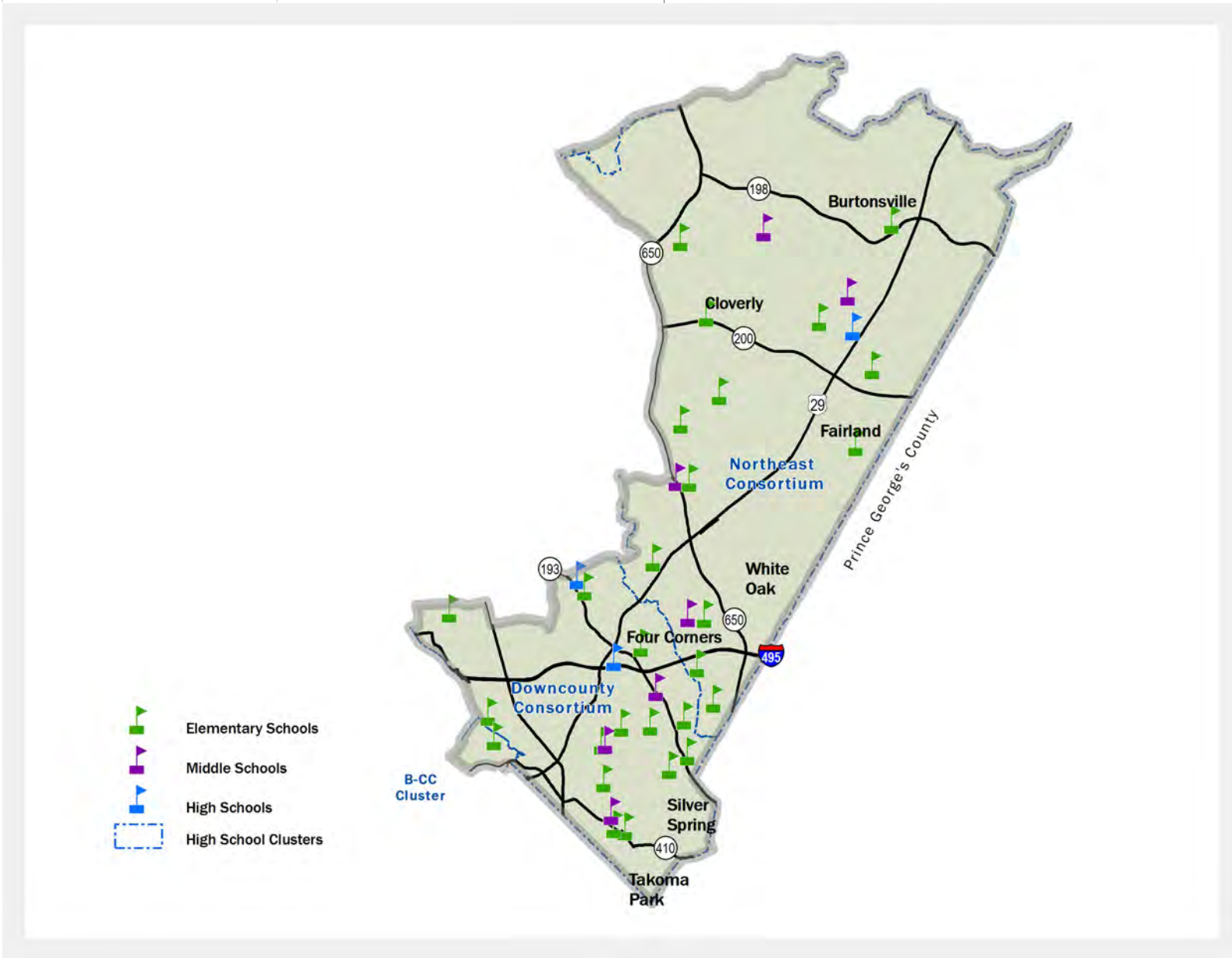
**land use**

**acres**

Residential Single-Family	11,820.50
Residential Multifamily	1,090.20
Retail	490.1
Office	395.8
Industrial	188.8
Agriculture	1,067.80
Cultural	8.5
Institutional/Community Facility	1,686.70
Open Space/Recreation	820.9
Parking and Transportation	131.3
Parks	4,911.10
Research and Development	75.80
Utility	43.6
Warehouse	132.8
Vacant	2,275.10





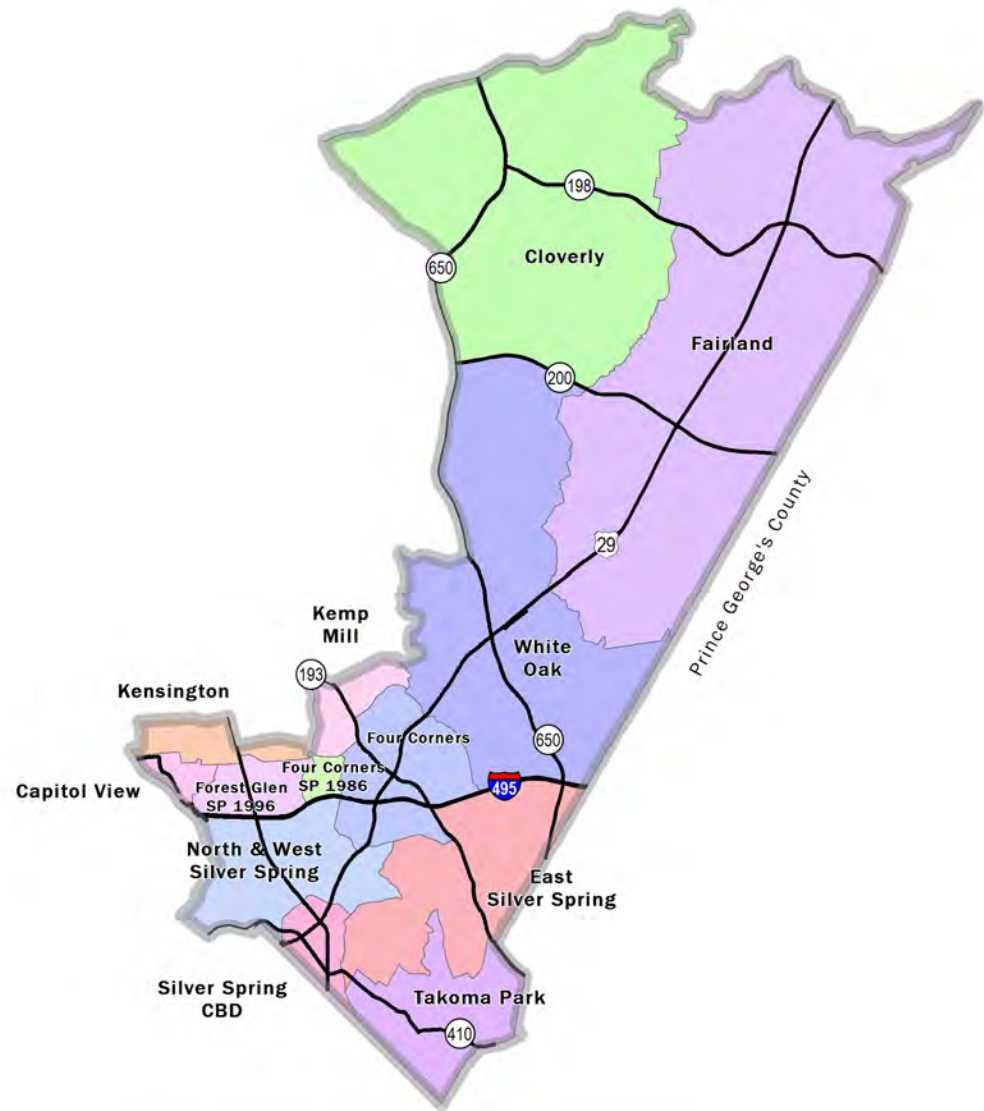


**schools**

Elementary Schools  
Middle Schools  
High Schools

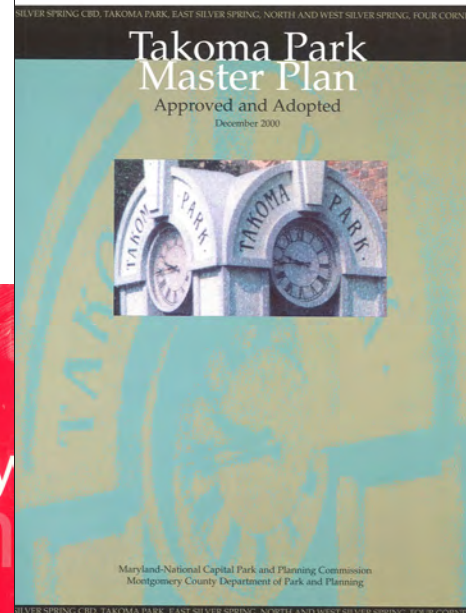
27  
7  
3





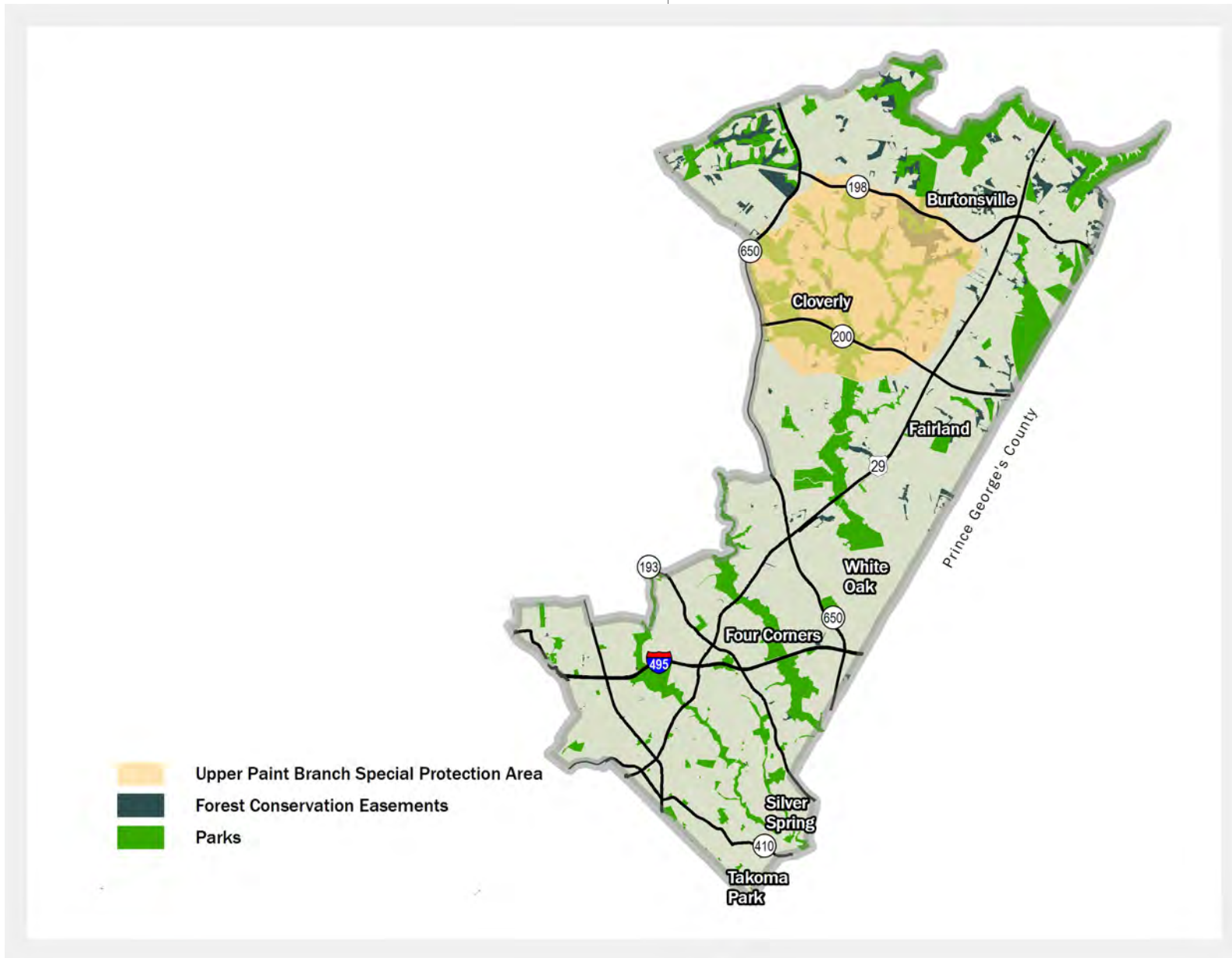
## master plans

Capitol View & Vicinity Sector Plan (1982)  
Cloverly Master Plan (1997)  
Glenmont Sector Plan (1997)  
Fairland Master Plan (1997)  
Four Corners Master Plan (1996)  
Four Corners Sector Plan (1986)  
Kemp Mill Master Plan (2001)  
Kensington Sector Plan (1978)  
Sandy Spring-Ashton Master Plan (1998)  
North and West Silver Spring Master Plan (2000)  
East Silver Spring Master Plan (2000)  
Silver Spring Central Business District Sector Plan (2000)  
Takoma Park Master Plan (2000)





district 5: environmental features



**environmental features**

**acres**

**percent of total in district 5**

Forest Conservation Easements

1,013.80

7.1

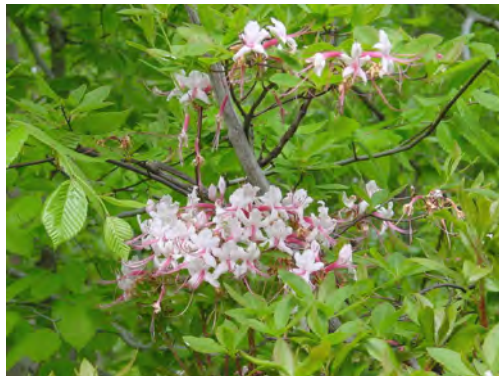
Parks

5,453

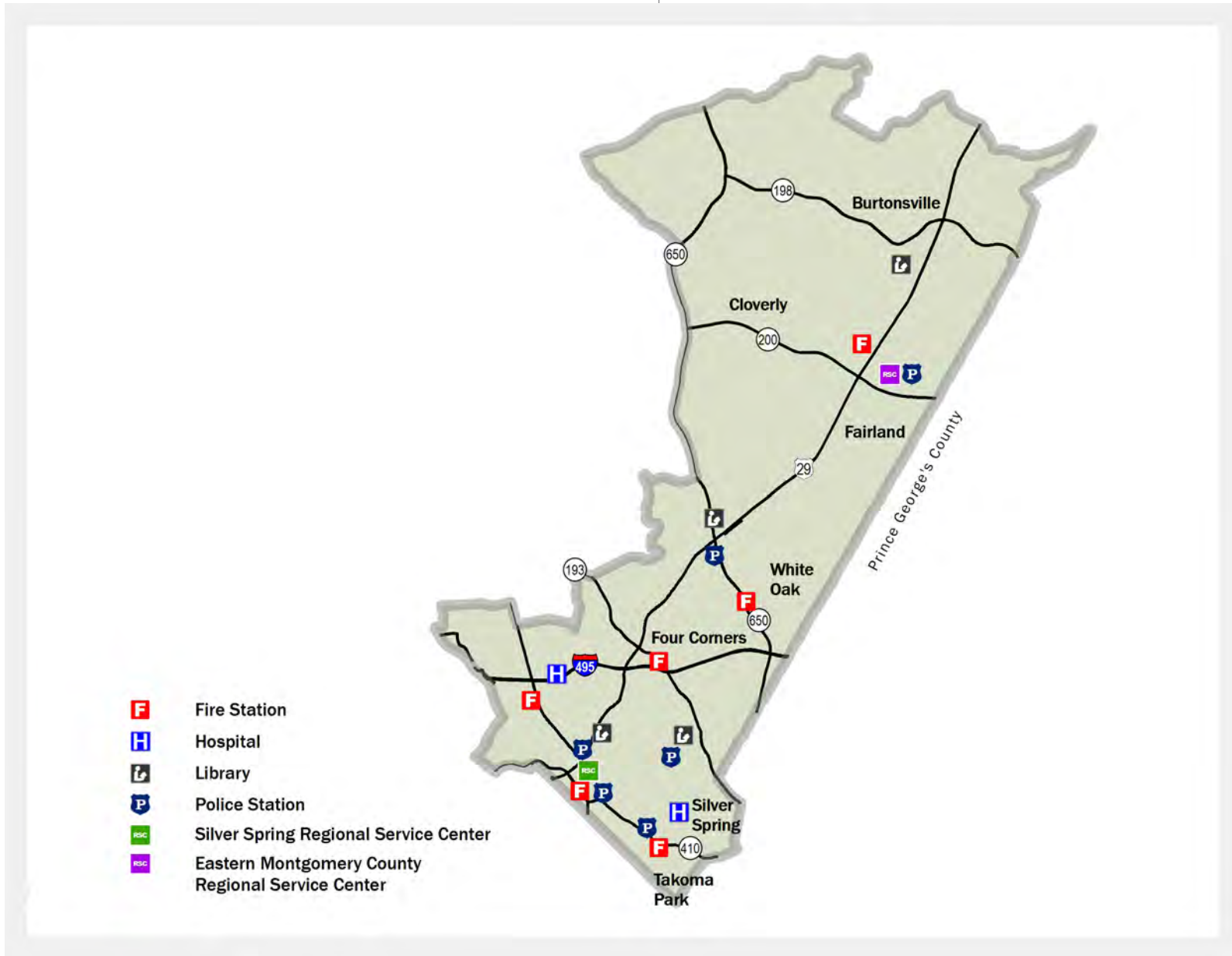
8.6

Upper Rock Creek Special Protection Area

4,779.10



district 5: community facilities



**community facilities**

Fire stations  
Hospitals  
Libraries  
Police stations

6  
2  
4  
7









# MONTGOMERY COUNTY DATA ATLAS

COUNCIL DISTRICT MAPS

Montgomery County Planning Department

 M-NCPPC

[MontgomeryPlanning.org](http://MontgomeryPlanning.org)



512000013