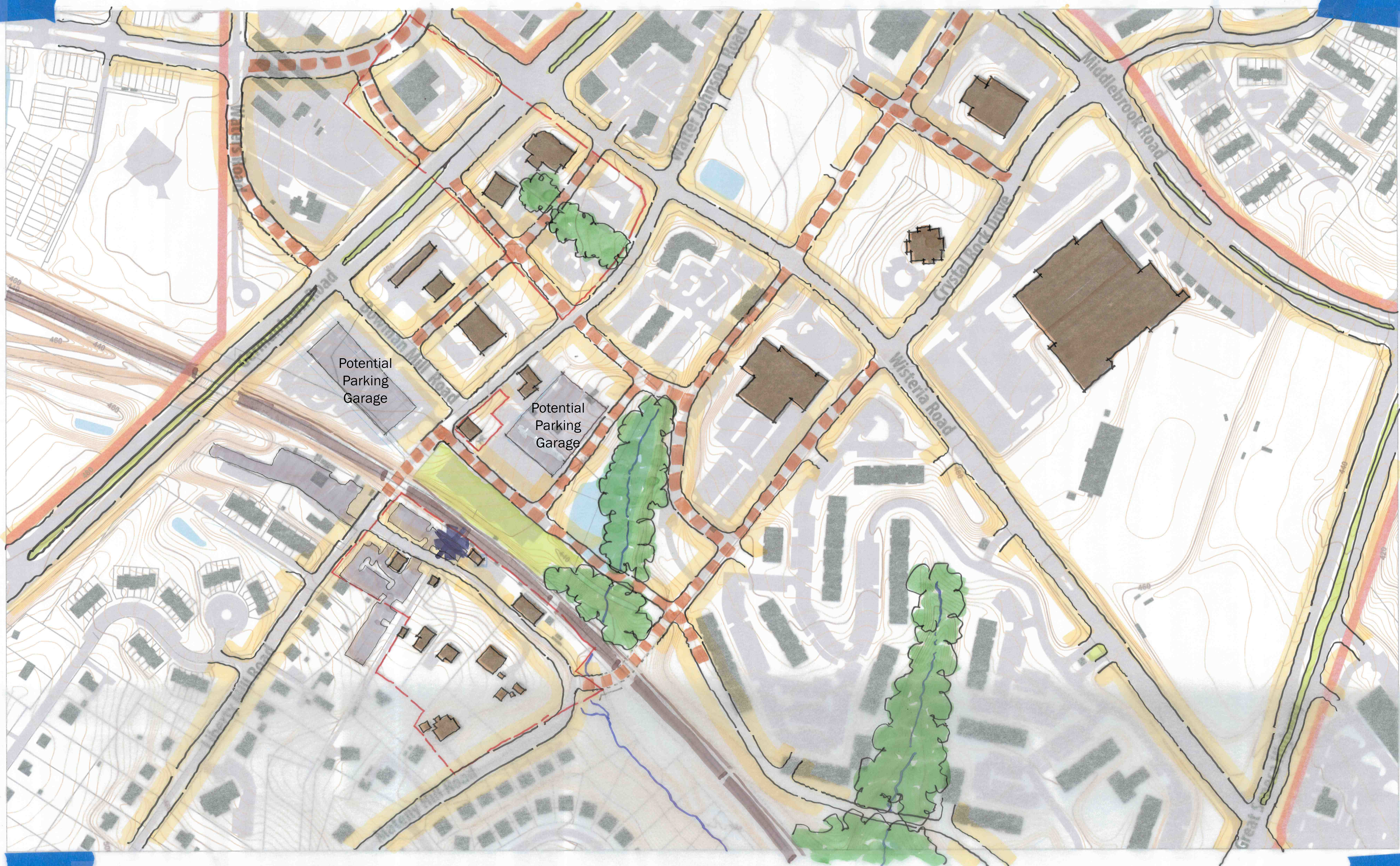


GERMANTOWN FRAMEWORK IDEAS G 3/16/16

- ① PRESERVE & ENHANCE HISTORIC DISTRICT
- ② STREETS SHOULD BE THE SOCIAL SPACES OF COMMUNITY
- ③ PROMOTE WALKABILITY AND A GREAT PEDESTRIAN ENVIRONMENT
- ④ CREATE A BIKE NETWORK THROUGHOUT
- ⑤ INTRODUCE FOCUSED PUBLIC SPACES (GREENS, PLAZAS)
- ⑥ INTRODUCTION OF A FINER GRAIN OF STREETS
- ⑦ PROVIDE RESIDENTIAL & NEIGHBORHOOD SERVING USES ADJACENT TO MARC STATION (T.O.D)
- ⑧ MAKE EXIST. STREETS SAFE FOR PEDESTRIANS
- ⑨ MAKE MARC STATION FULLY ACCESSIBLE
- ⑩ INCREASE MARC PARKING IN STRUCTURES
- ⑪ ALLOW FOR ADDITION OF 3RD LINE OF TRACKS
- ⑫ REDUCE AMOUNT OF SURFACE PARKING
- ⑬ BETTER INTEGRATE SENECA HIGH SCHOOL INTO NEIGHBORHOOD
- ⑭ USE NEW DEVELOPMENT TO FRAME GREAT STREETS
- ⑮ SAVE & ENHANCE STREAM AREAS



Germantown

