

# ASPEN HILL VISION ZERO STUDY



Montgomery Planning

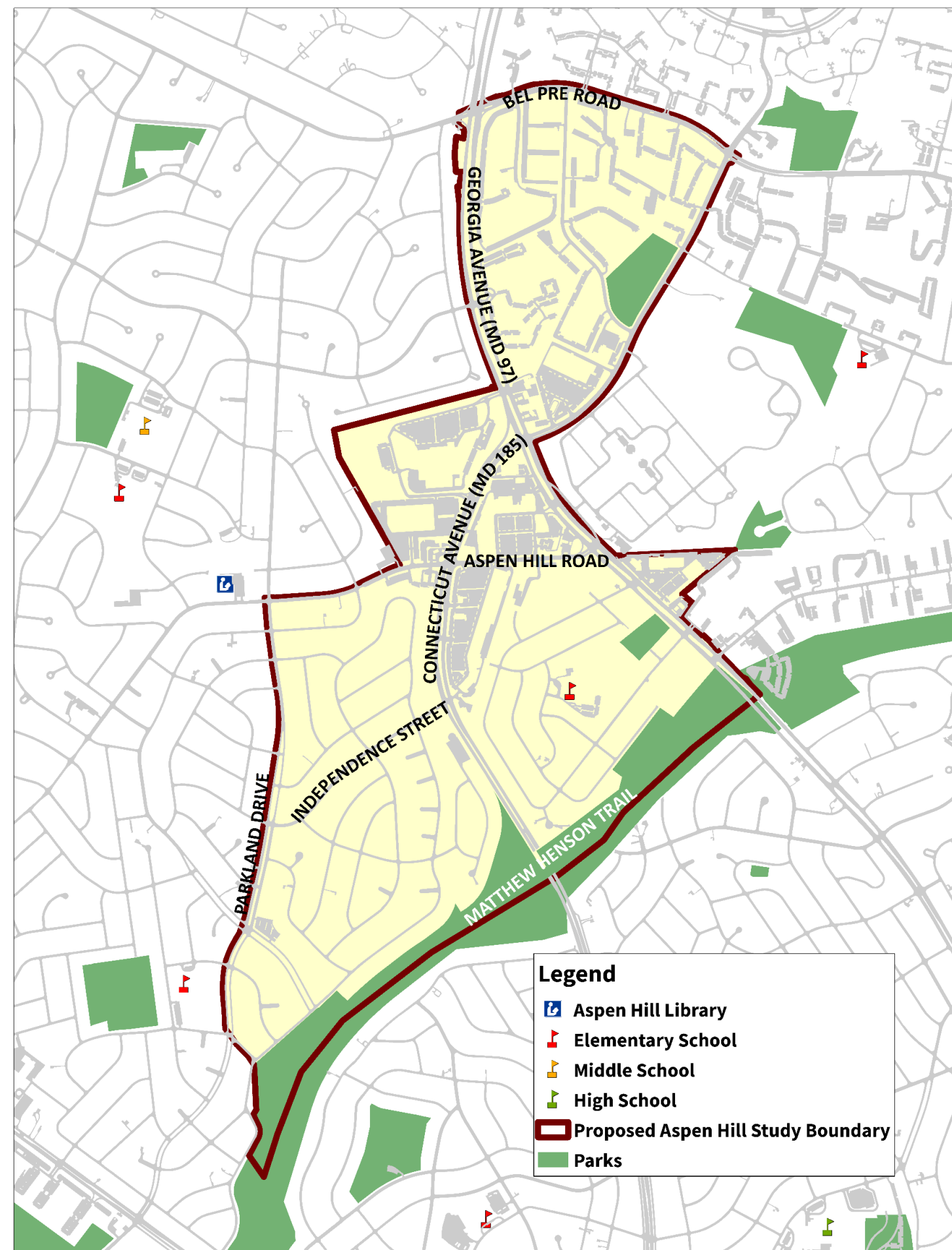
## Scope of Work

December 6, 2018

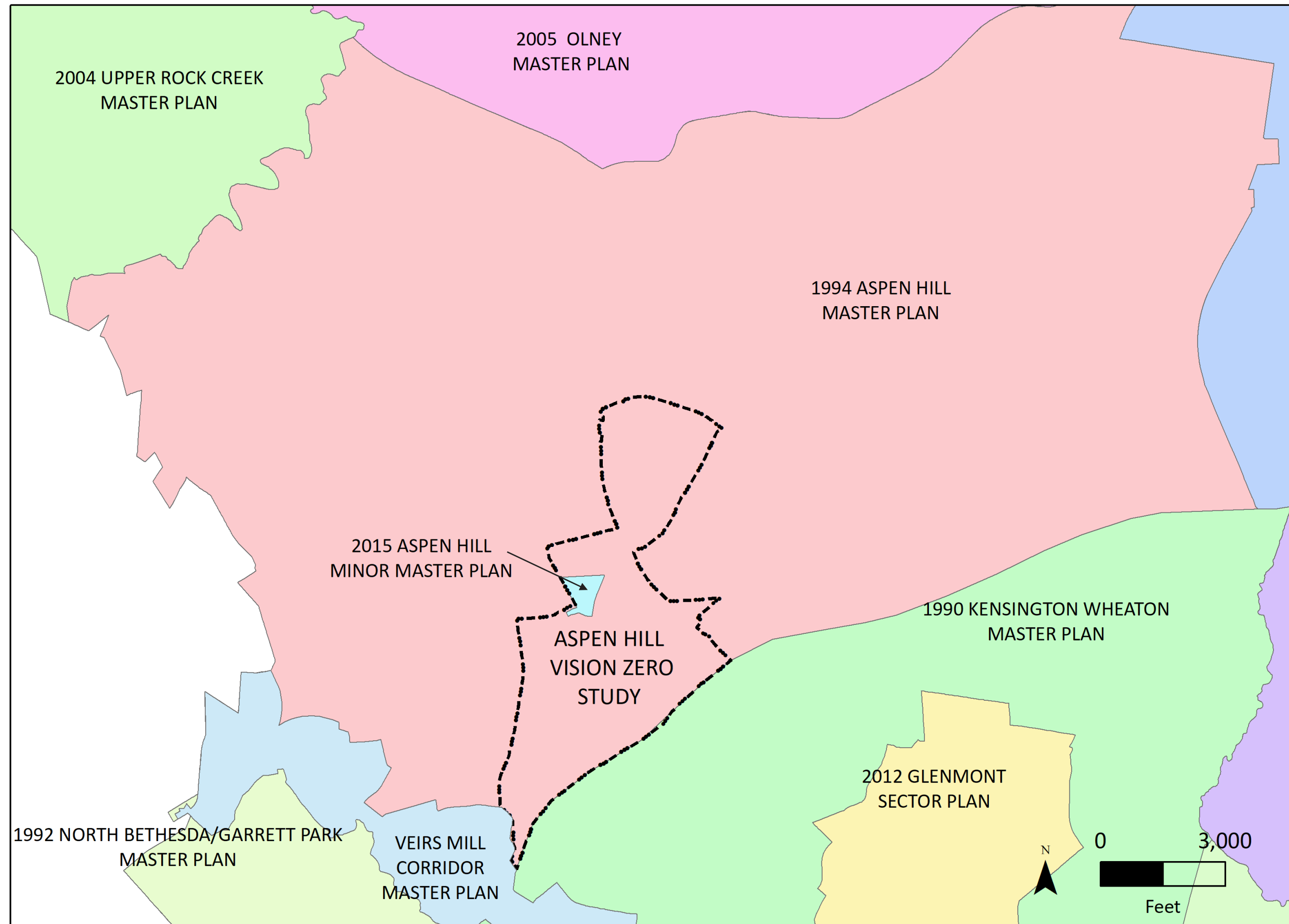
Montgomery Planning Board



# Aspen Hill Vision Zero Proposed Study Boundary



# Planning Context





# Purpose of the Study

Examine potential strategies:

- To improve safety for all road users.
- To enhance neighborhood access to local destinations.
- To promote Vision Zero and collaborate with community members.
- To analyze zoning for existing commercial properties.





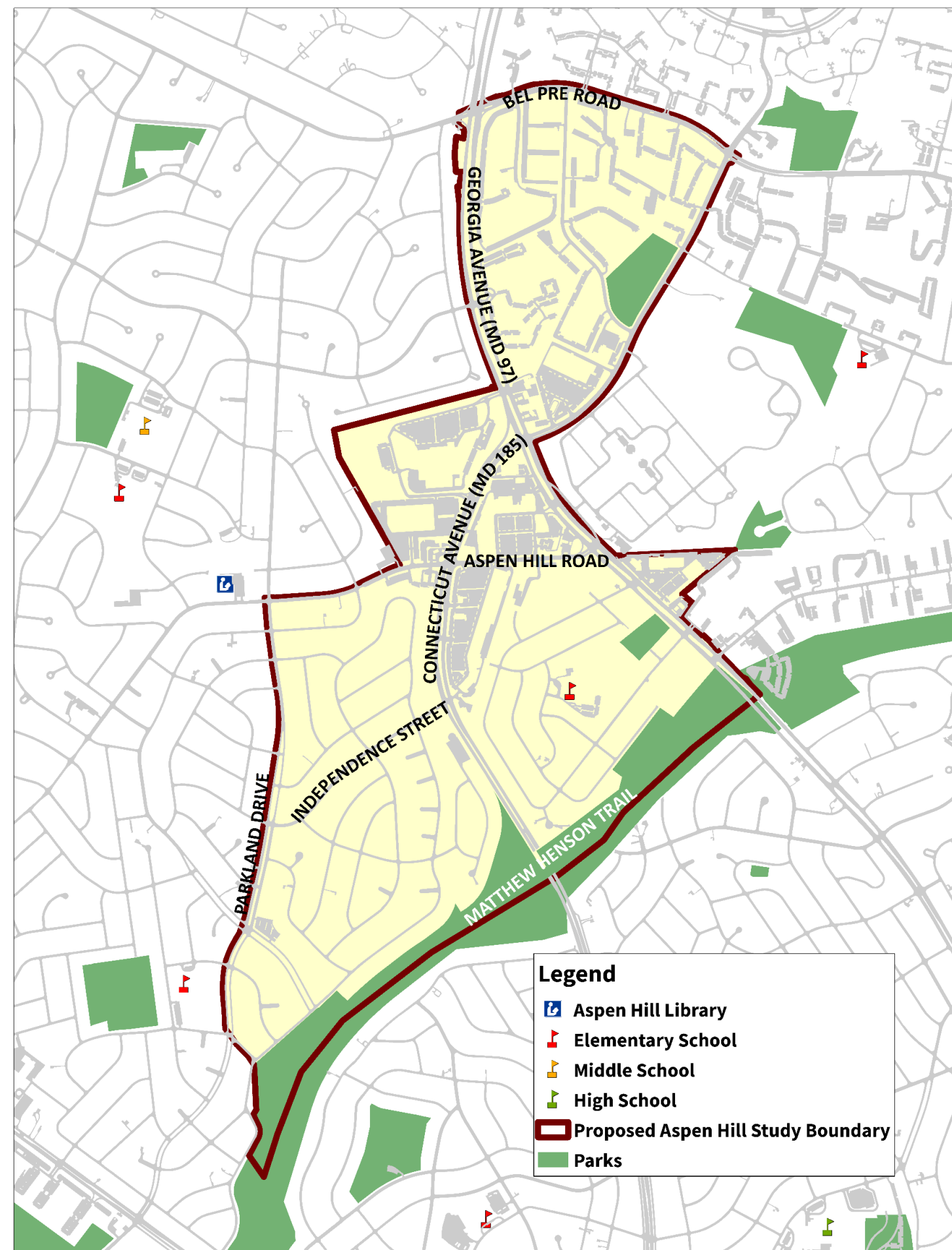
# Planning Framework: Vision Zero



Vision Zero commitment: to eliminate severe injuries and fatalities from crashes by 2030.

- Prioritize human life over mobility. Traffic deaths are preventable.
- Account for human error in the design of the road network.
- Reduce the severity of collisions.
- Emphasize a systems approach.
- Identify equitable solutions.

# Aspen Hill Vision Zero Proposed Study Boundary





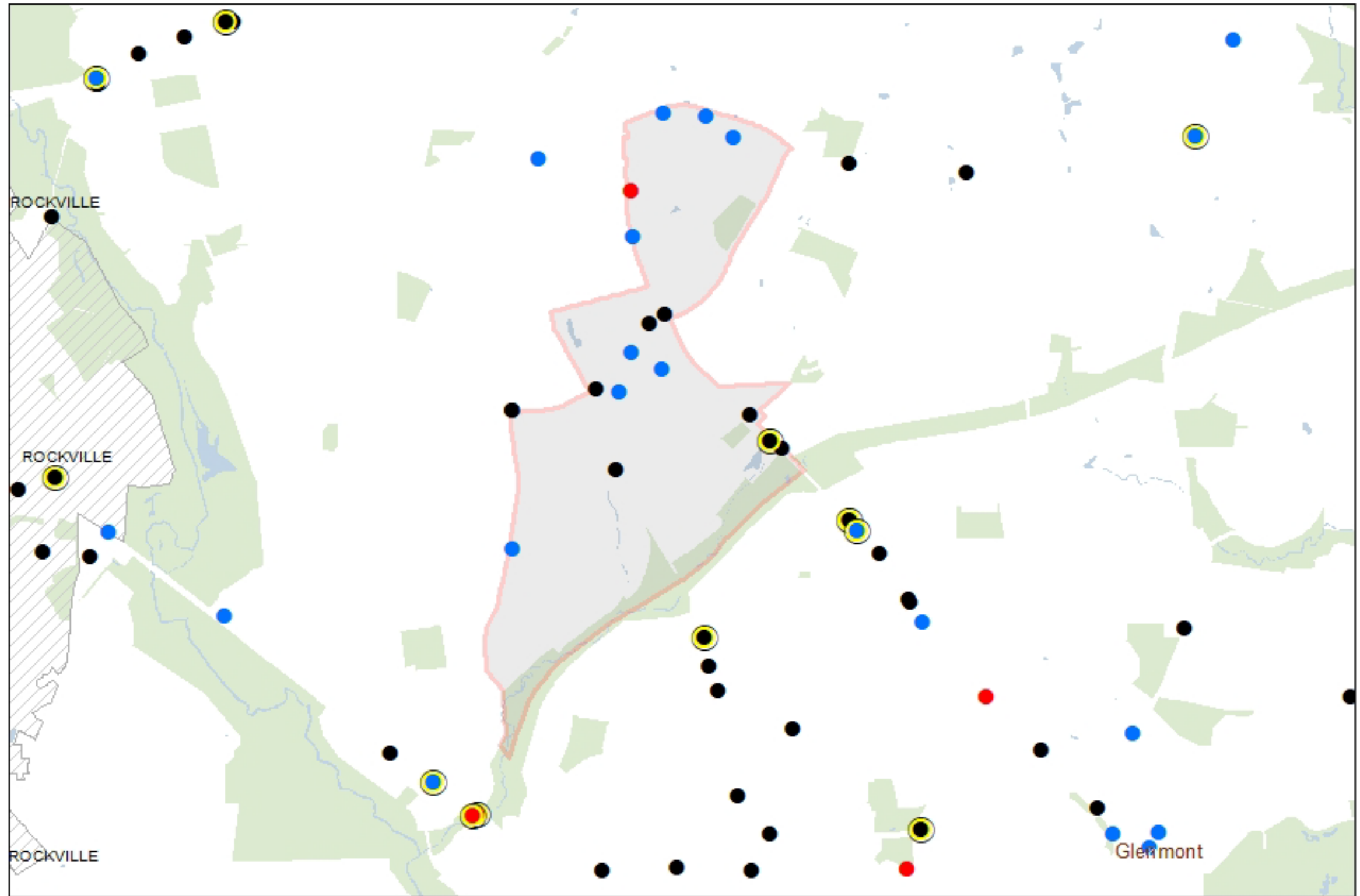




# Severe and Fatal Crashes in the Vicinity of Aspen Hill (2015-2017)

## Crash Type

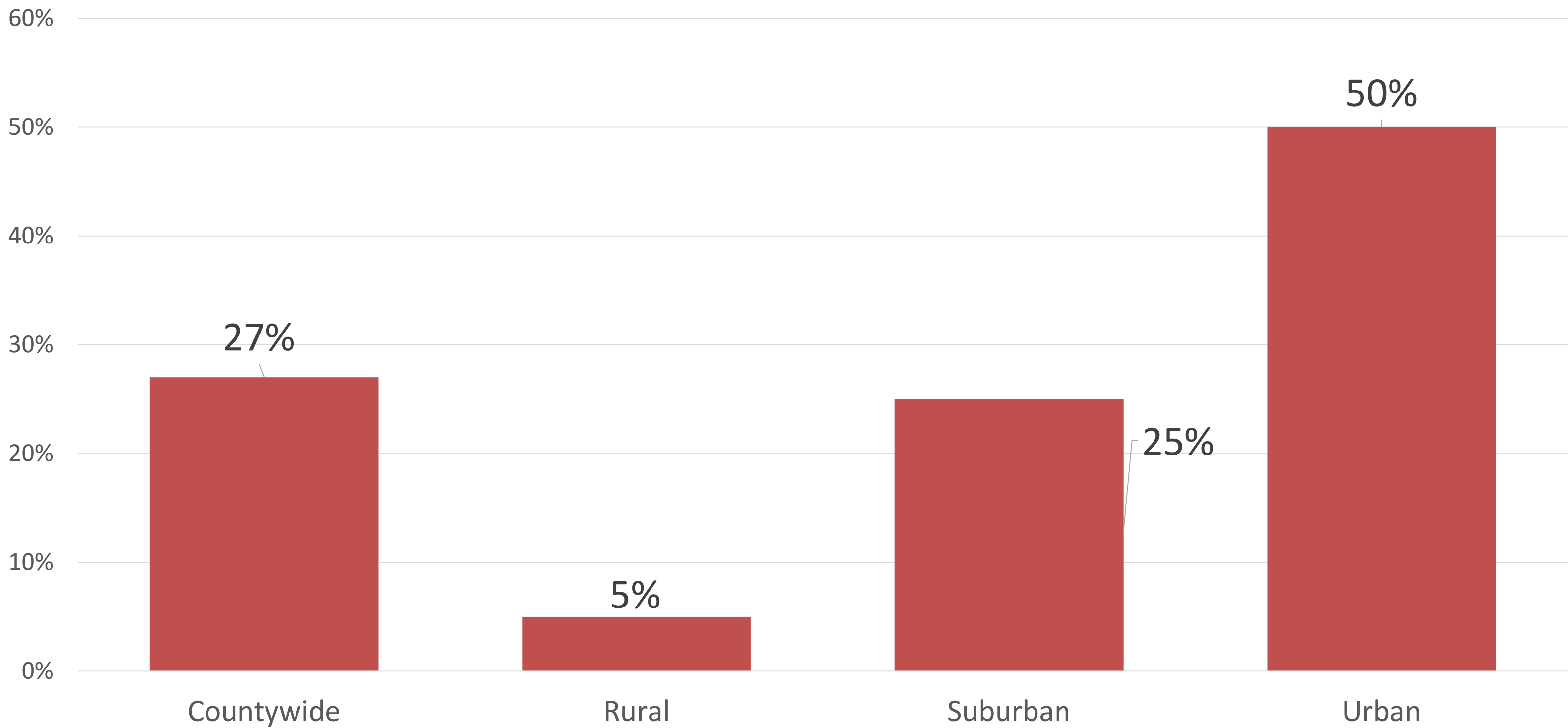
- Pedestrian (Severe)
- Pedestrian (Fatal)
- Bicyclist (Severe)
- Bicyclist (Fatal)
- Motor Vehicle Occupant (Severe)
- Motor Vehicle Occupant (Fatal)



Source: County Stat, Montgomery County Planning

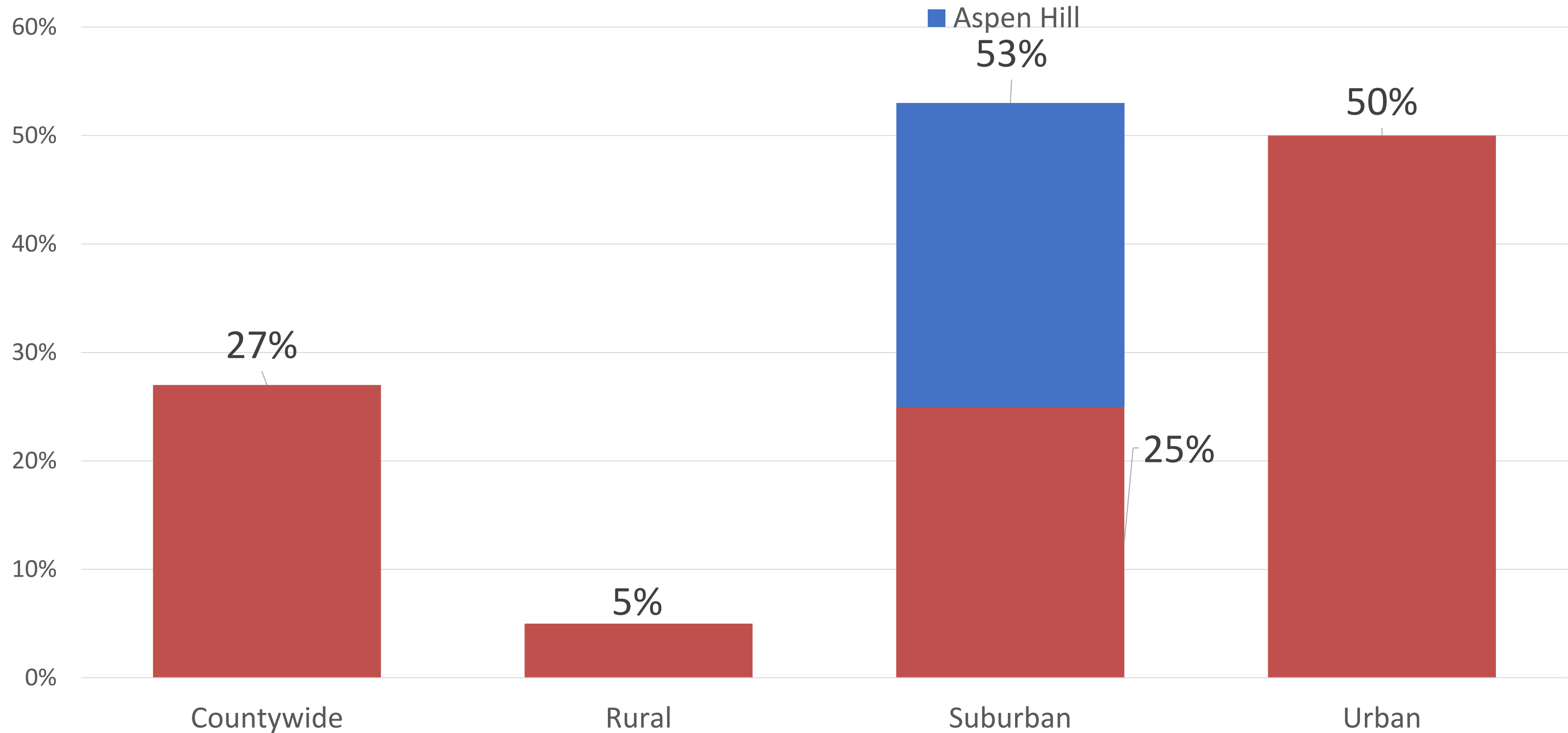


# Percent of Severe/Fatal Crashes that are Pedestrians/Bicyclists



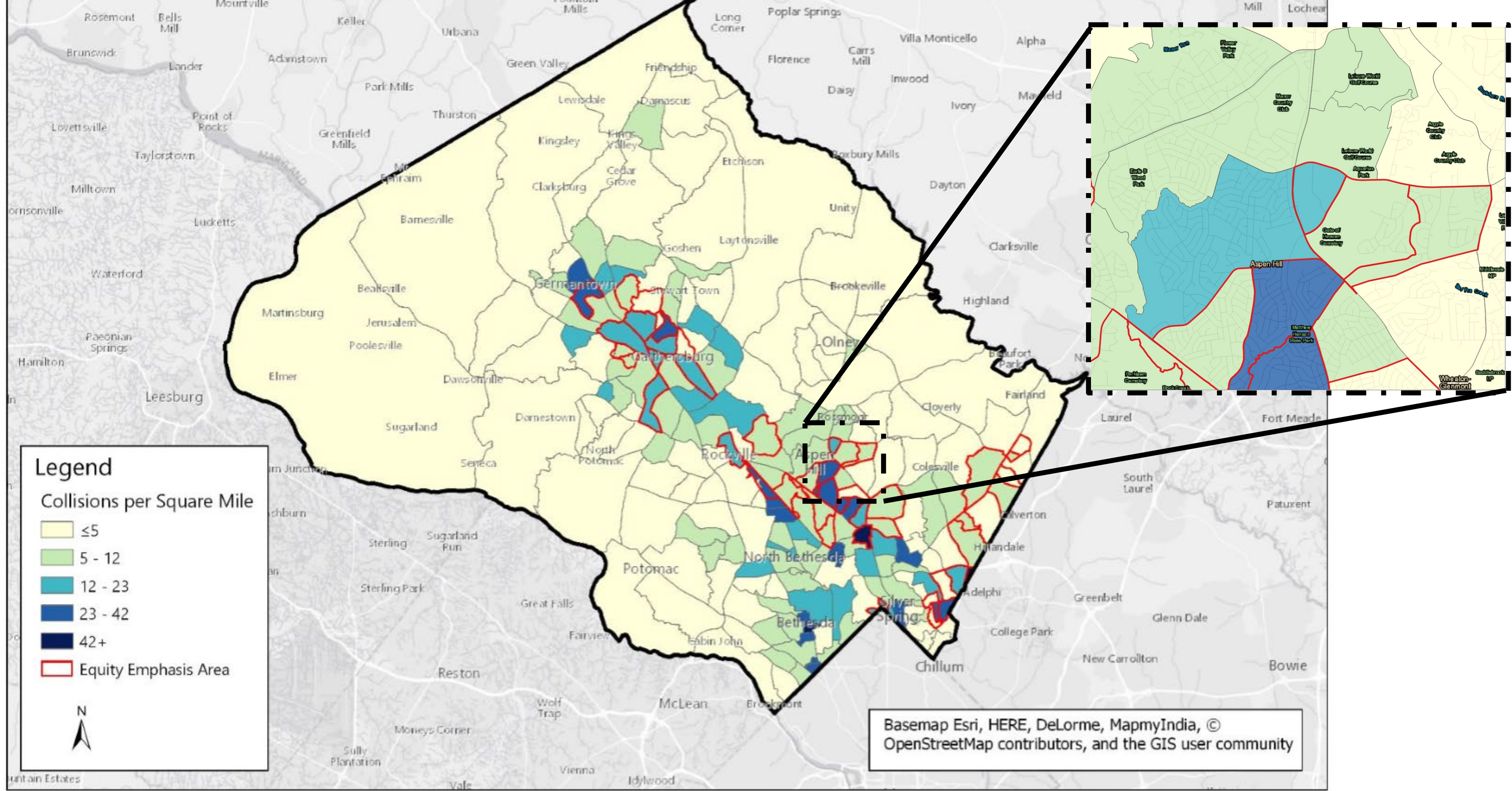
Source: County Stat, Montgomery County Planning

# Percent of Severe/Fatal Crashes that are Pedestrians/Bicyclists



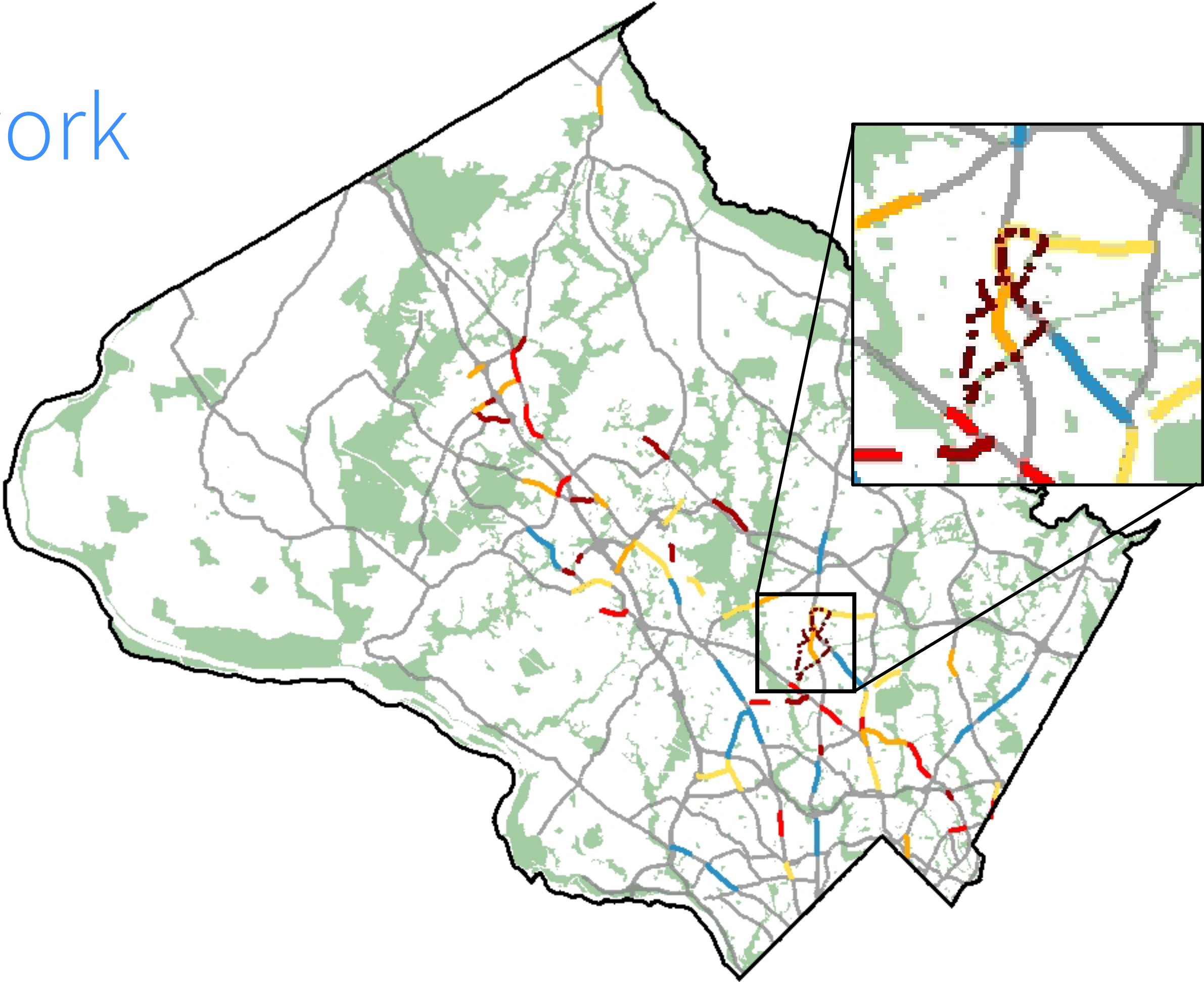
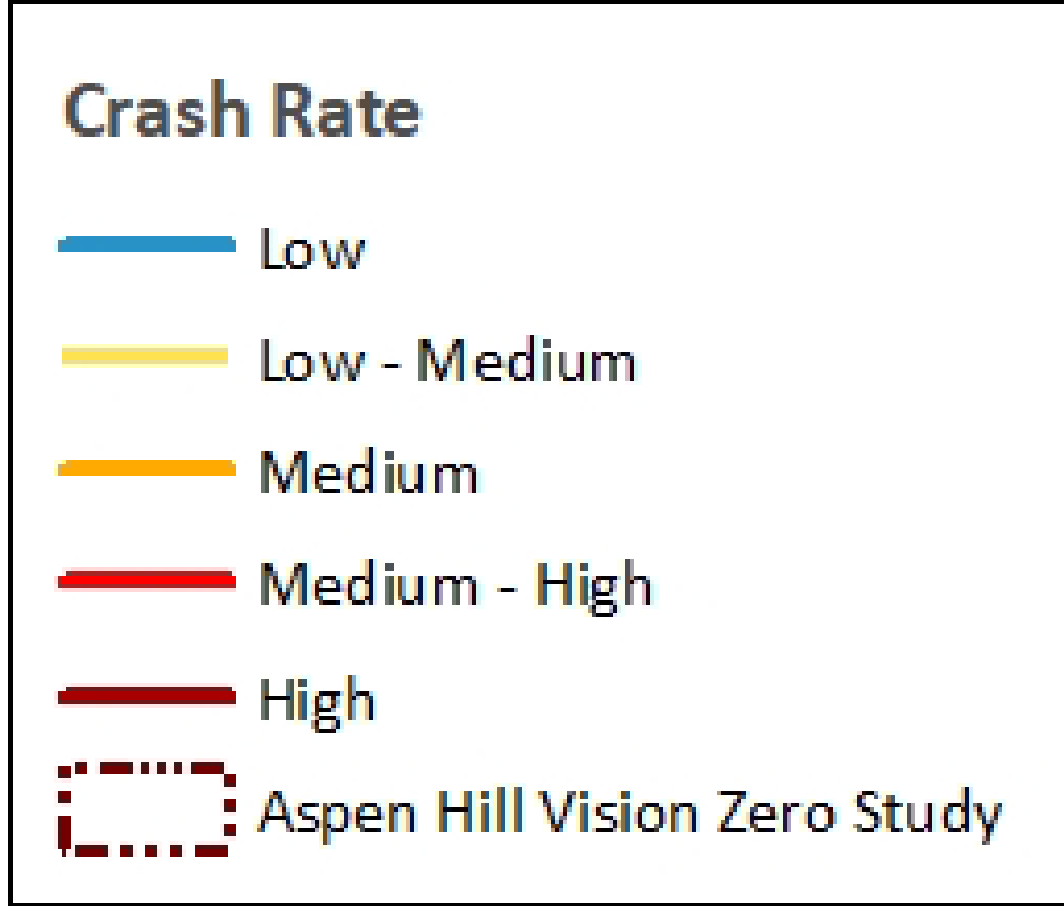
Source: County Stat, Montgomery County Planning







# High Injury Network



Source: Montgomery County Vision Zero Action Plan



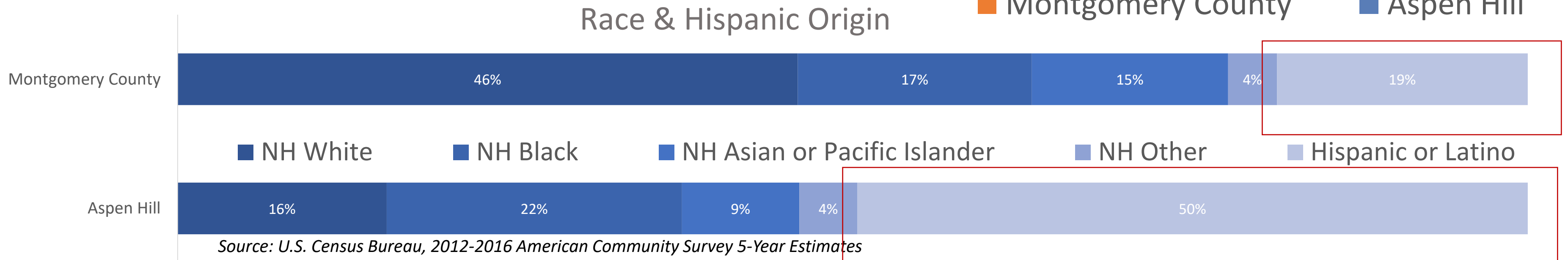
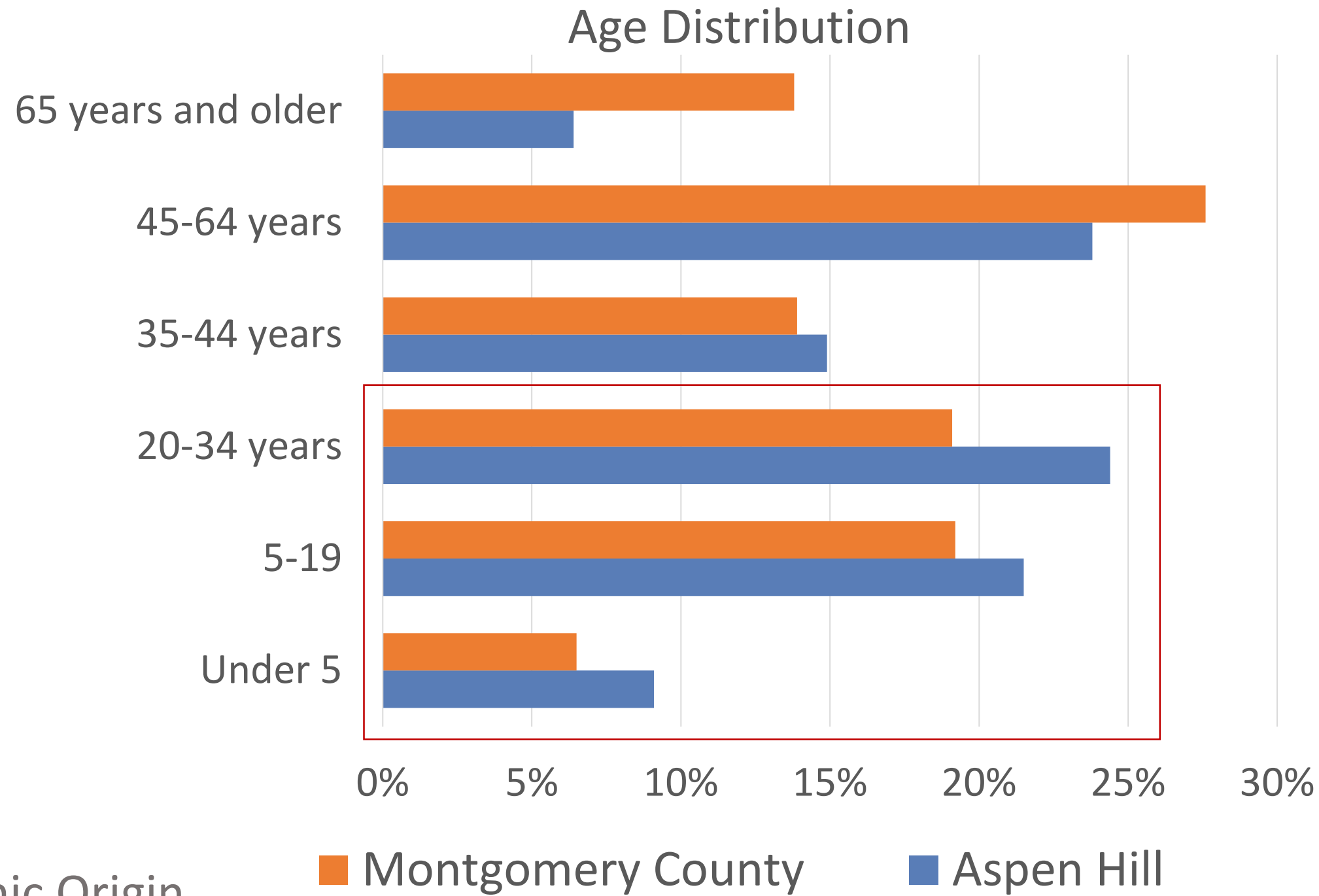
# High Injury Network List

Roadway	Total Collisions	Collisions per Mile per Year	Collisions per 100M VMT**
Crabbs Branch Way From Reland Rd to Indianola Dr	9	3.8	51.9
Middlebrook Rd* From Germantown Rd to I-270	15	2.6	33.1
Shady Grove Rd From Frederick Rd to I-270	14	2.7	18.3
Sam Eig Hwy From Fields Rd to Diamondback Dr	5	4.9	42.8
Randolph Rd* From Veirs Mill Rd to Rock Creek Park	9	2.6	30.7
Snouffer School Rd From Woodfield Rd to Flower Hill Way	9	2.0	25.4
Shady Grove Rd From Metro Access Rd to Midcounty Hwy	11	2.3	12.9
Bel Pre Rd* From Layhill Rd to Georgia Ave	10	1.0	12.5
Randolph Rd From Kemp Mill Rd to Gllenallan Ave	9	2.0	13.6
Darnestown Rd From W Montgomery Ave to Shady Grove Rd	6	1.5	20.4

Roadway	Total Collisions	Collisions per Mile per Year	Collisions per 100M VMT**
University Blvd W* From Georgia Ave to Colesville Rd	30	2.2	18.5
Veirs Mill Rd From Connecticut Ave to Newport Mill Rd	12	3.3	24.5
Rockville Pike From Jones Bridge Rd to Cedar Ln	12	3.6	22.1
W Diamond Ave From I-270 to Water St	5	1.6	44.4
Frederick Rd From Middlebrook Rd to Wheatfield Dr	13	2.3	18.8
Frederick Rd From Gude Dr to Shady Grove Rd	15	1.9	11.9
Ridge Rd From Frederick Rd to Brink Rd	9	3.3	28.6
Muncaster Mill Rd From ICC (MD-200) to Olde Mill Run	10	1.5	24.7
Georgia Ave From Forest Glen Rd to Plyers Mill Rd	14	2.7	12.5
Connecticut Ave* From Matthew Henson Trail to Georgia Ave	11	2.4	18.0

# Aspen Hill Snapshot

- 11,300 people & 3,400 households
- Majority Latino population
- 1/3 population under 19 years old
- 85% of households earn less than median income
- 20% commute by public transit





# Study Focus

- Access and connectivity
- Designing for people who walk and bike
- Healthy and sustainable communities
- Equity
- Land Use





# Access and Connectivity





# Designing for People who Walk and Bike





# Healthy and Sustainable Communities





# Equity

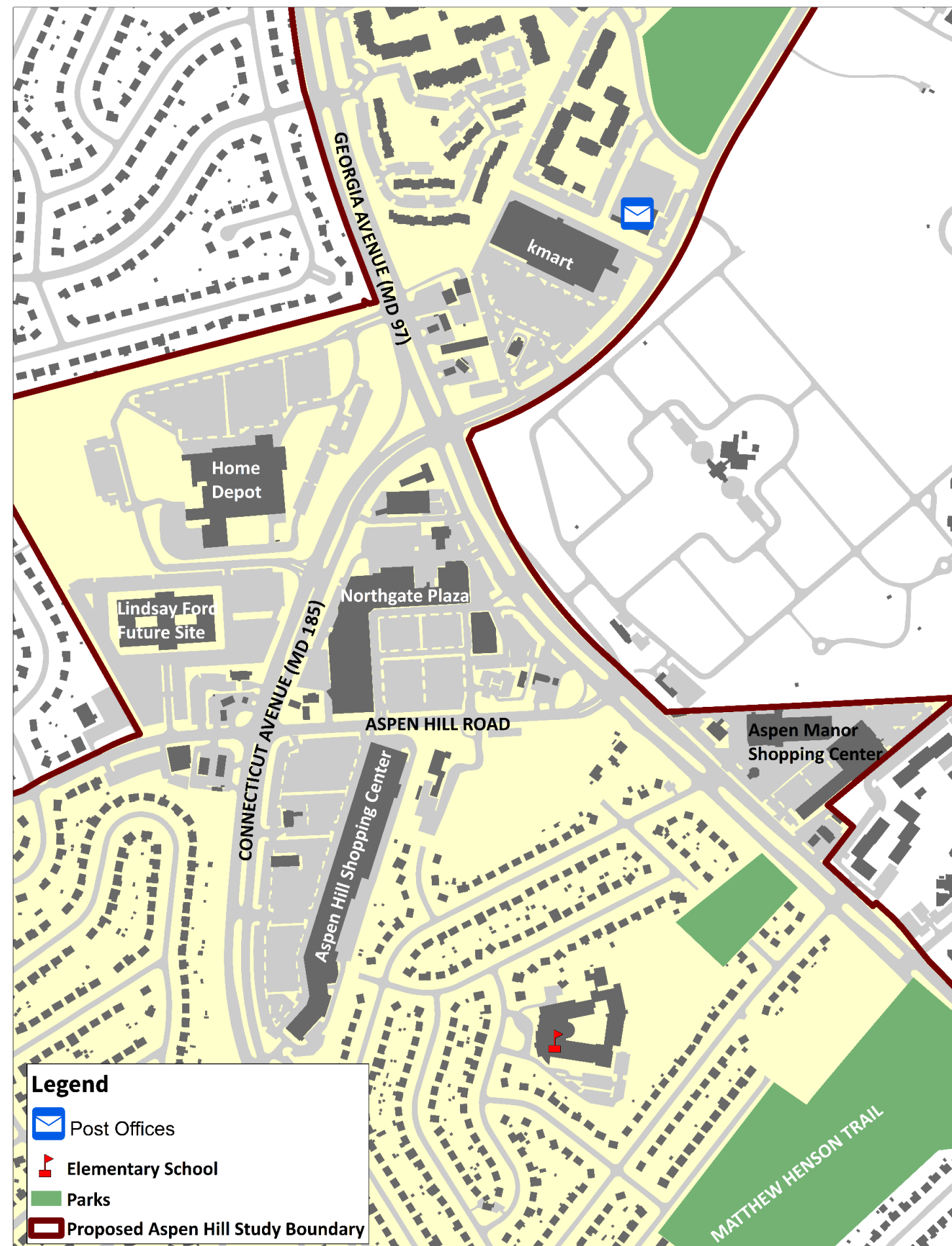
## Greater Crash Density in neighborhoods with:

- Higher percentage of households that don't speak English fluently
- Higher percentage of population that is Hispanic/Latino
- Higher percentage of households below the poverty level
- Lower median age

*Source: Montgomery County 2-Year Action Plan*

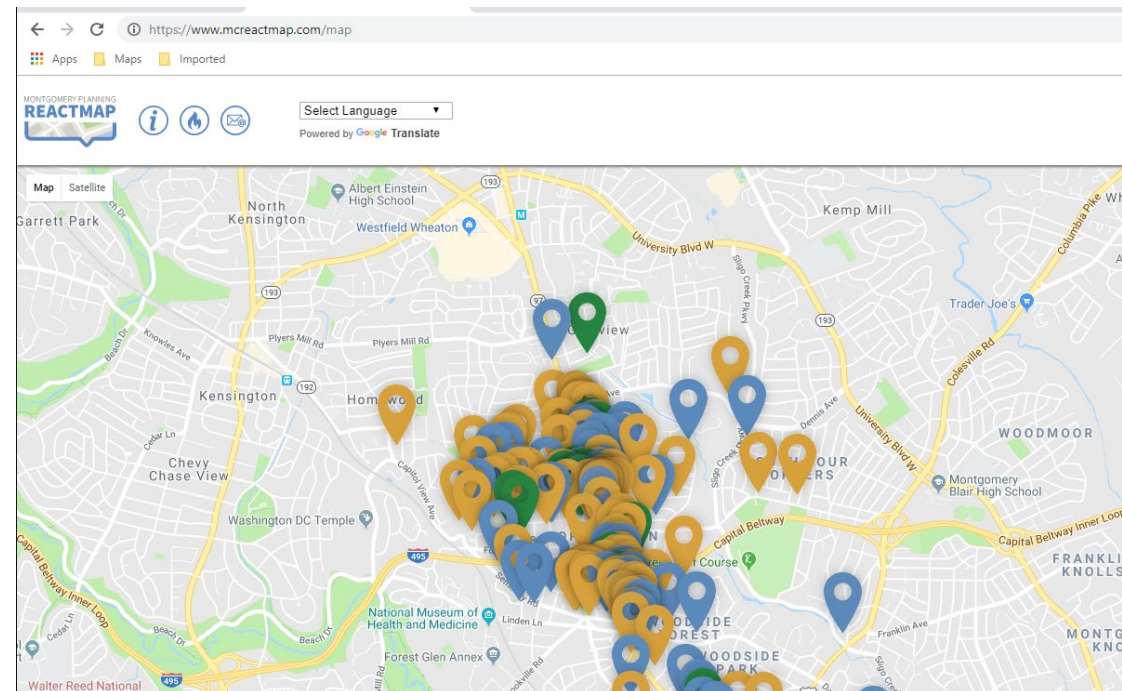
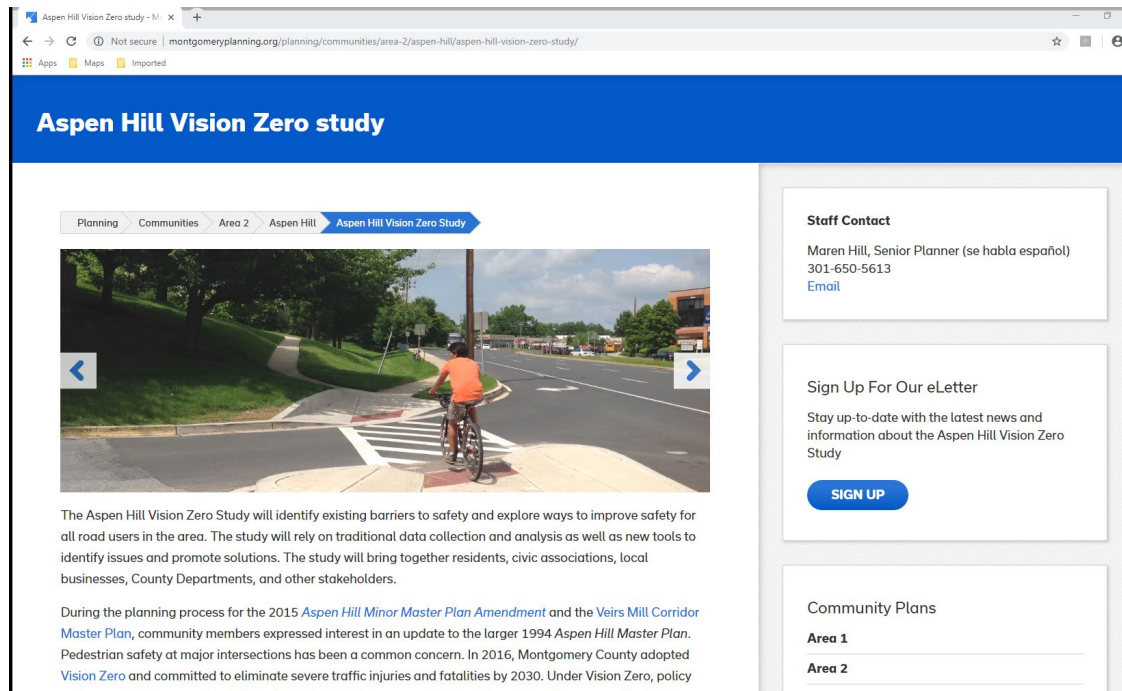


# Land Use





# Engagement





# Aspen Hill Vision Zero Walk Audit





# Advisory Group





# Timeline

- ❖ August 2018 – March 2019 Community Engagement
- ❖ September 2018 – February 2019 Data Collection and Analysis
- ❖ April – June 2019 Develop Recommendations
- ❖ July – September 2019 Planning Board Review



# Questions | Comments | Connect

Maren Hill: [Maren.Hill@montgomeryplanning.org](mailto:Maren.Hill@montgomeryplanning.org)

Website: [montgomeryplanning.org/aspenhillvisionzero](http://montgomeryplanning.org/aspenhillvisionzero)

Twitter: @montgomeryplans

Facebook: [Facebook.com/montgomeryplanning](https://www.facebook.com/montgomeryplanning)

Instagram: @montgomeryplanning

