

ASPEN HILL VISION ZERO STUDY



Montgomery Planning

Kickoff Meeting

September 26, 2018

Aspen Hill Library

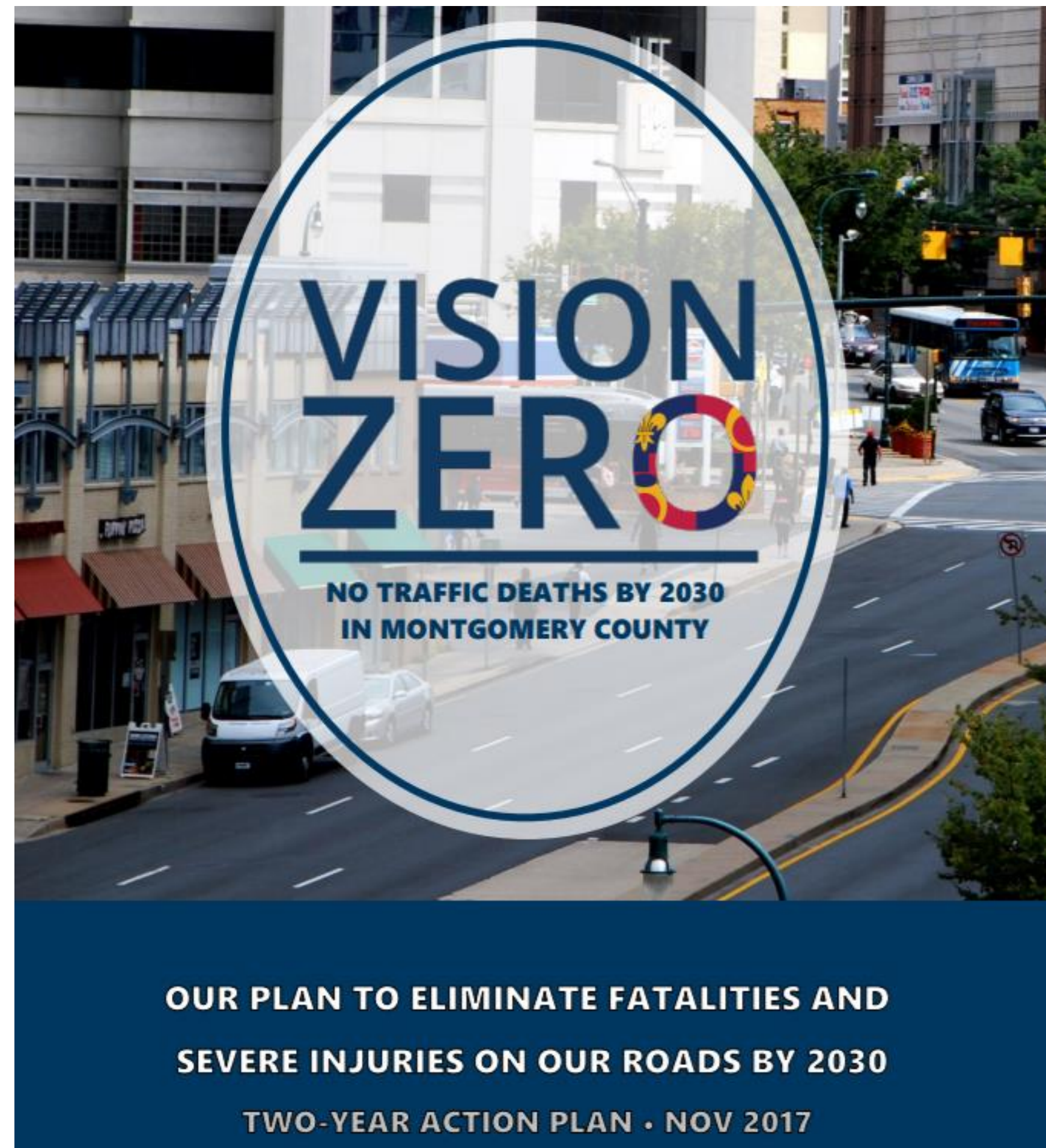


Agenda

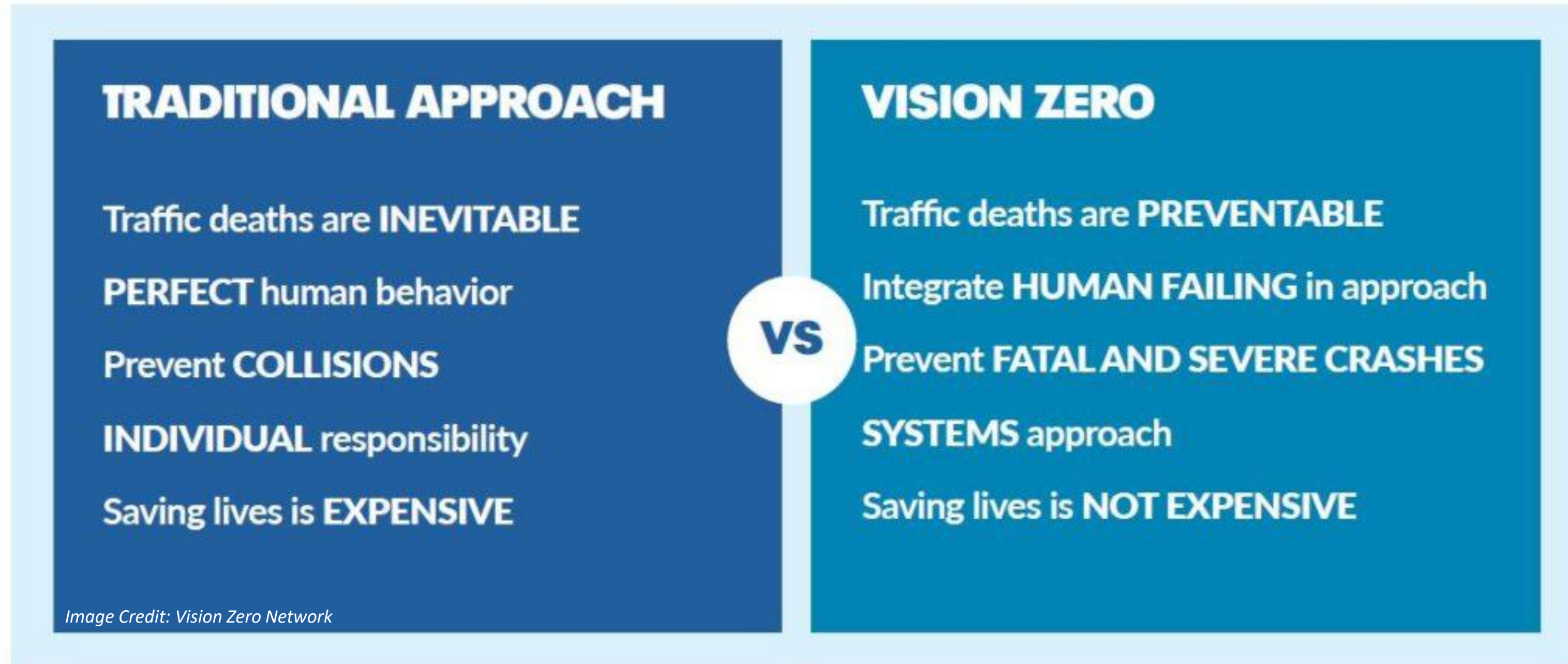
- Welcome
- Staff Presentation
- Questions and Responses
- Open House

What is Vision Zero?

- In Montgomery County, an annual average of 30 fatalities and 340 severe injuries between 2012-2016.
- In the United States, it is a response to the approximately 40,000 traffic fatalities annually



What is Vision Zero?



How is Safety Created?

- Decrease the **frequency** of crashes
- Decrease the **severity** of crashes

Decreasing Crash Frequency

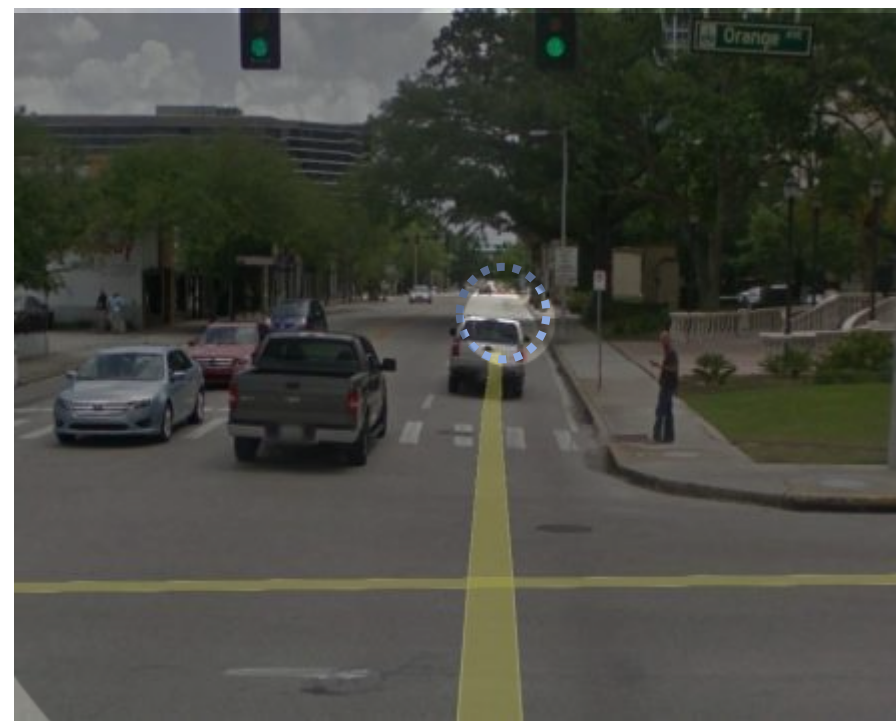
- Decrease the number of conflicts
 - Designate space for different users
 - Provide predictability where users interact



Decreasing Crash Frequency

- Increase the ability to yield

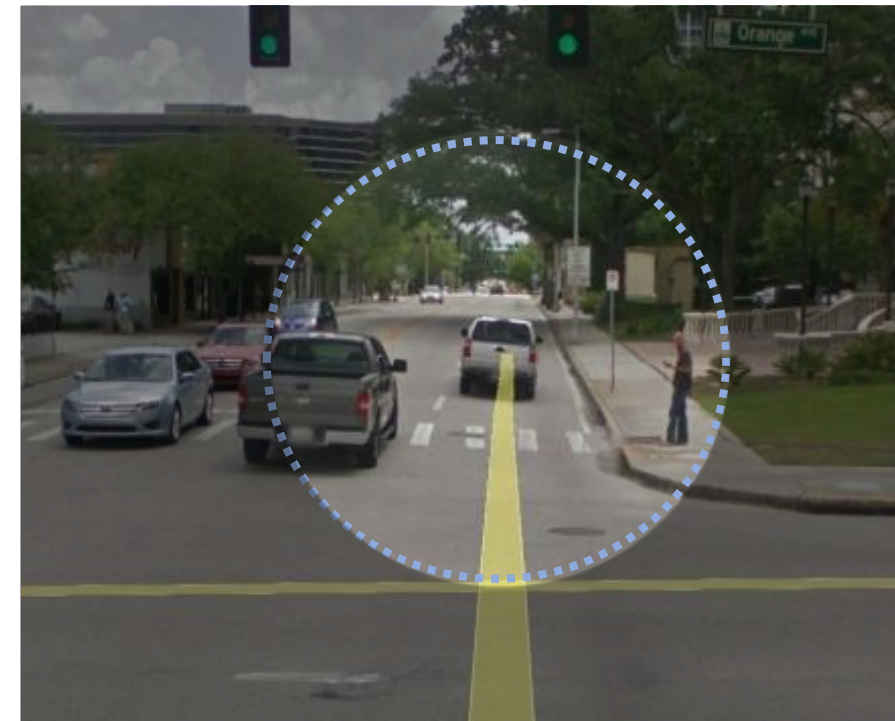
Driver Field of Vision at Various Speeds



40 MPH



30 MPH



20 MPH



15 MPH

Image Credit: Kittelson & Associates, Inc.

Decreasing Crash Severity

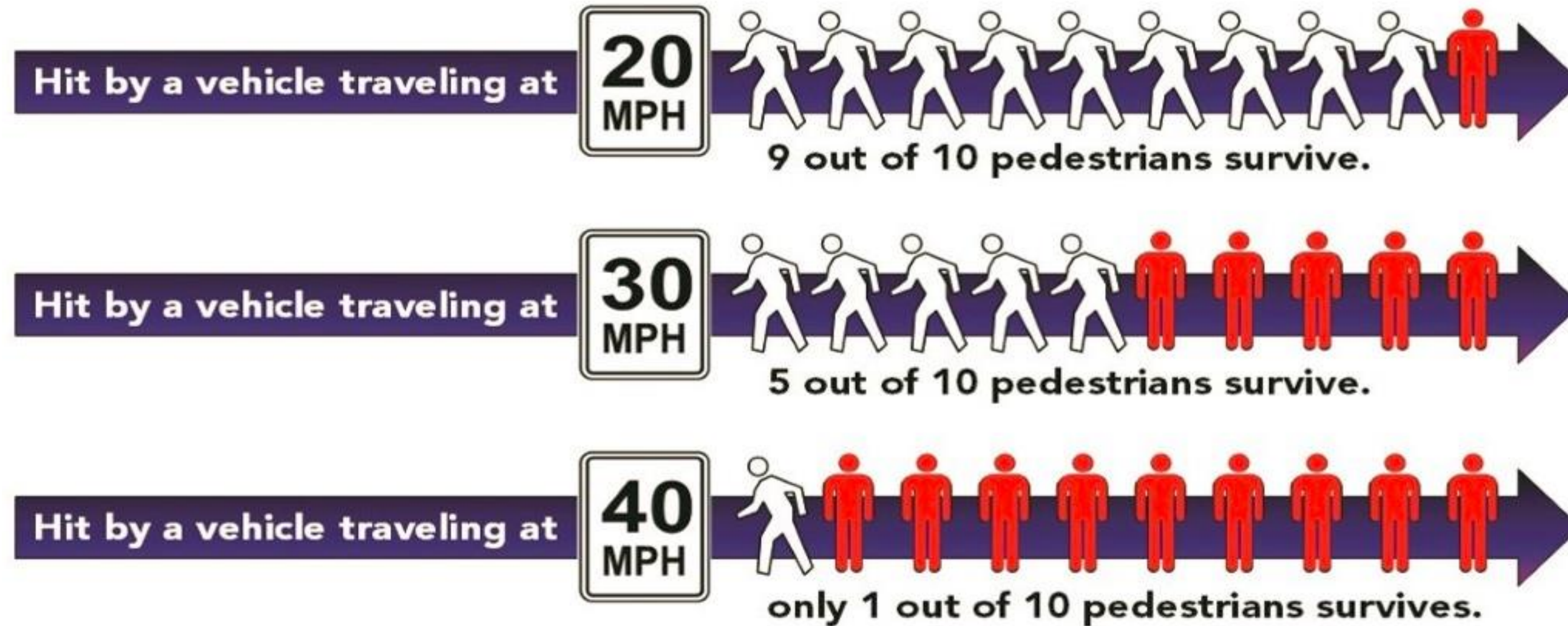
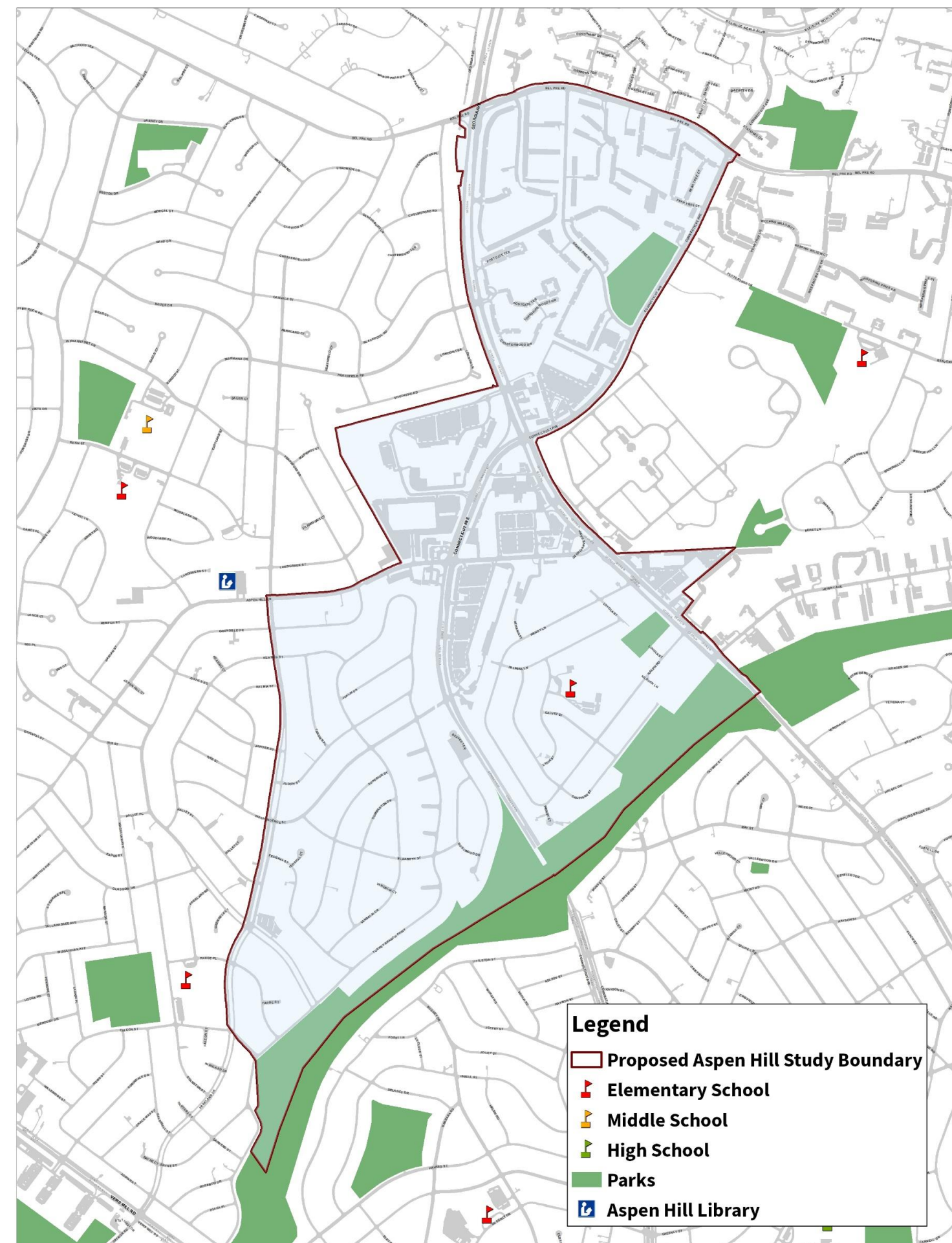
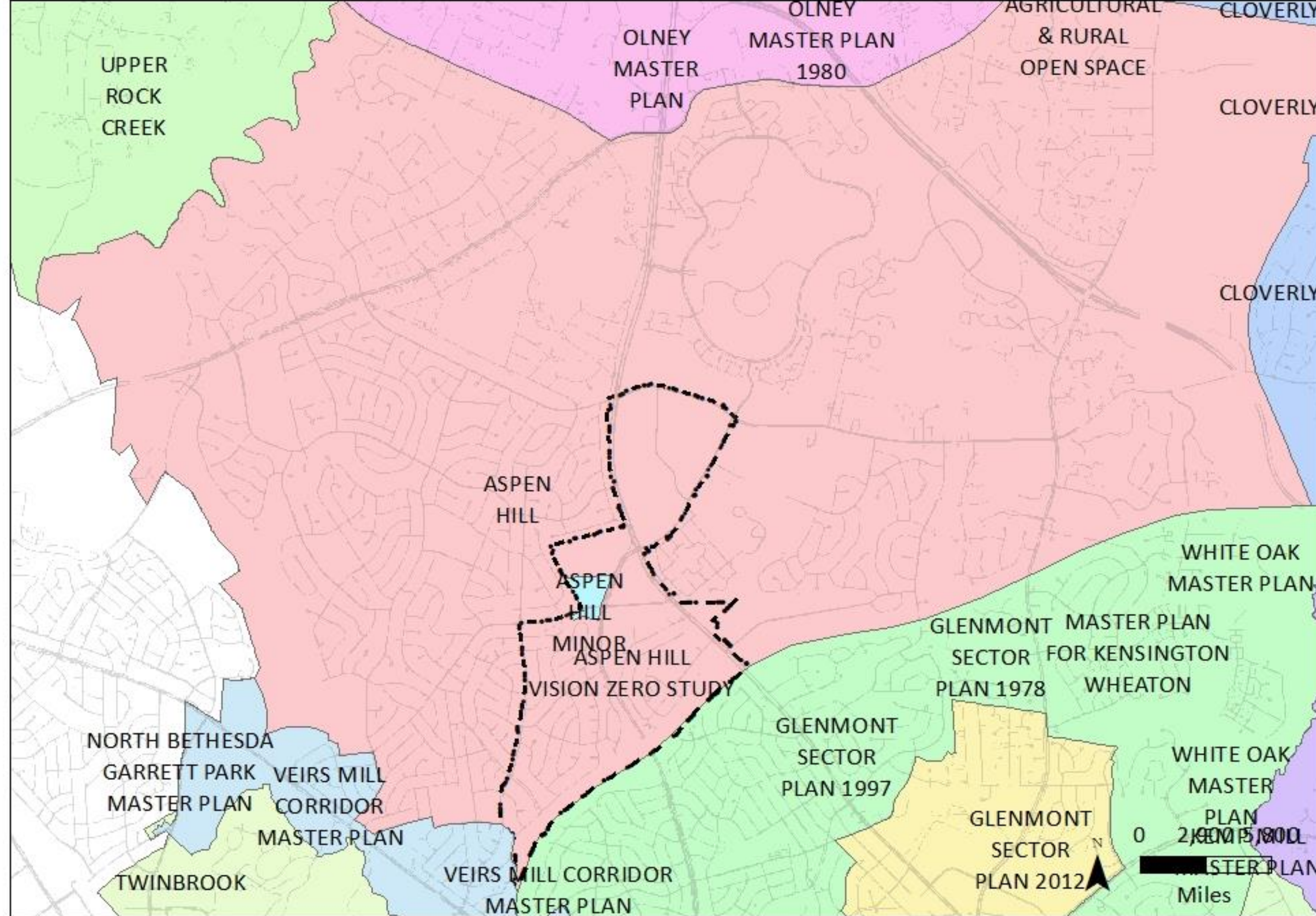


Image Credit: World Resources Institute

Aspen Hill Vision Zero Proposed Study Boundary

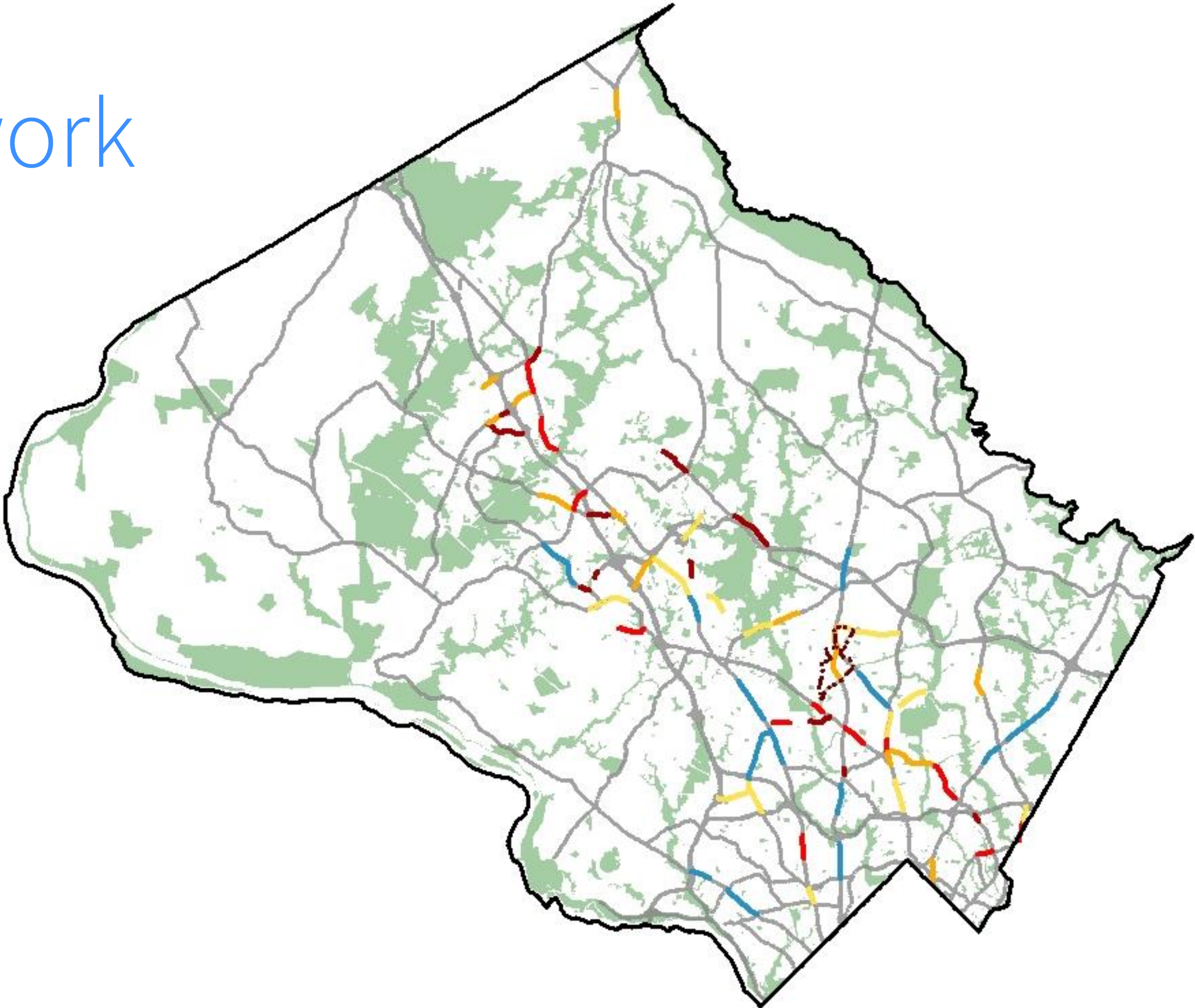
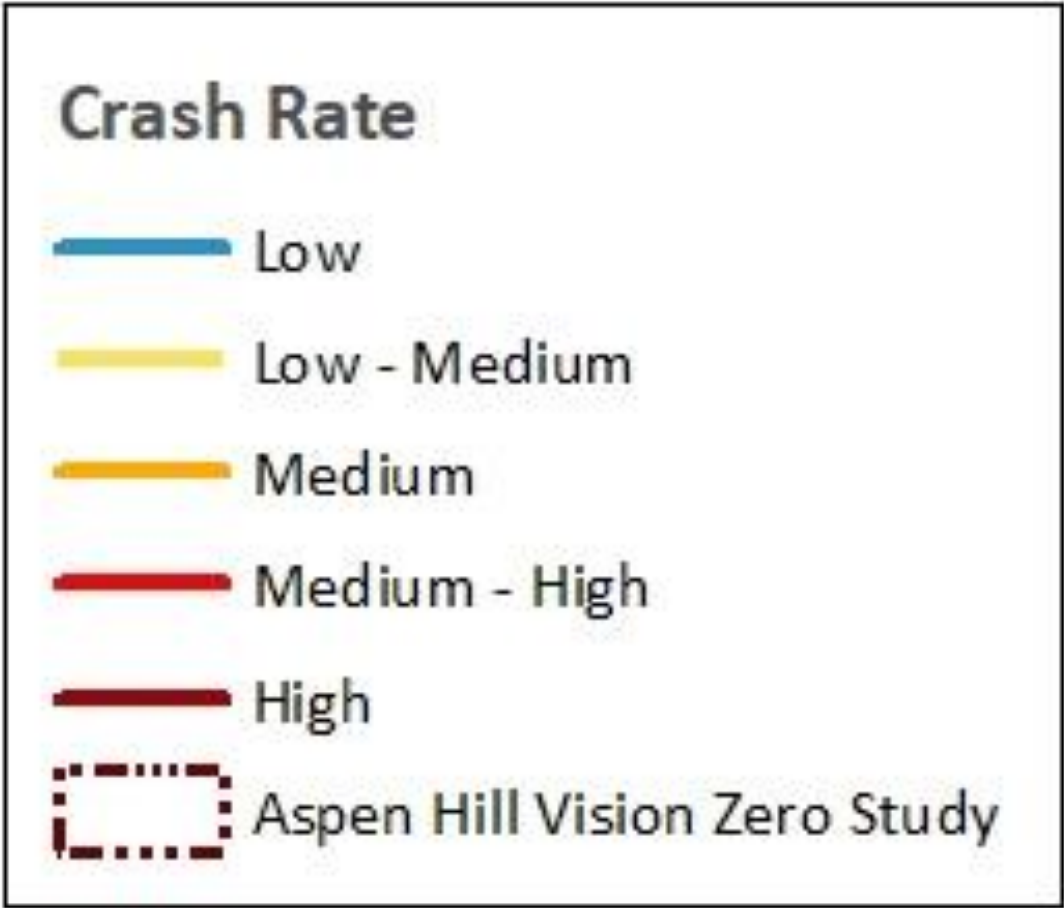




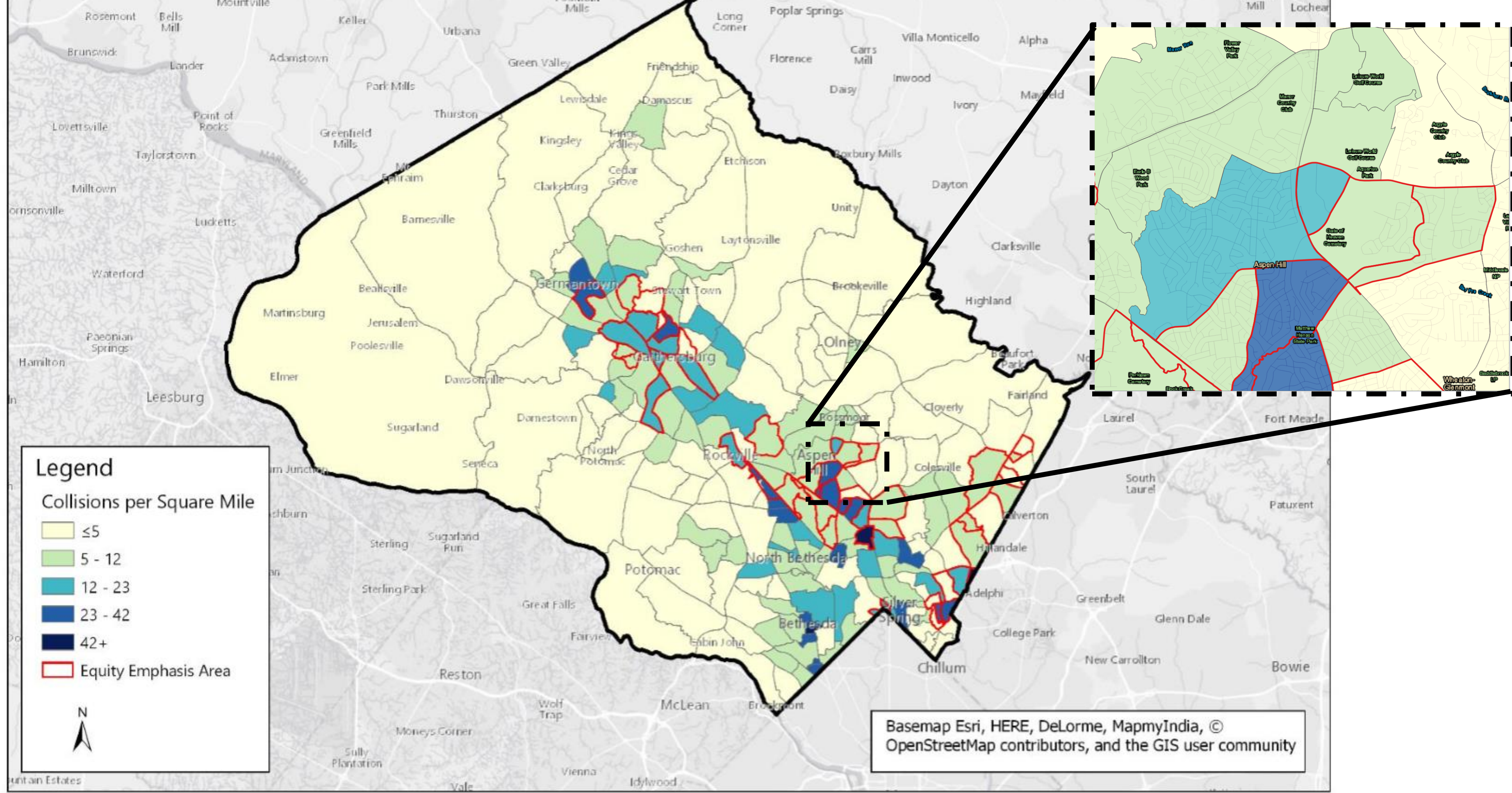




High Injury Network

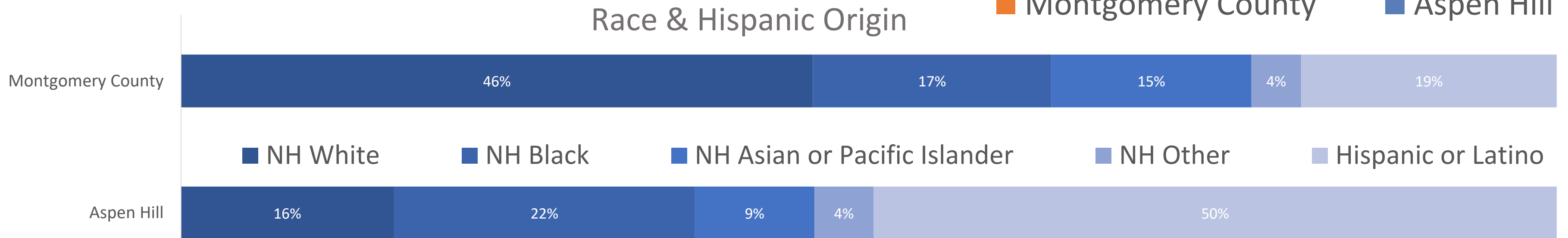
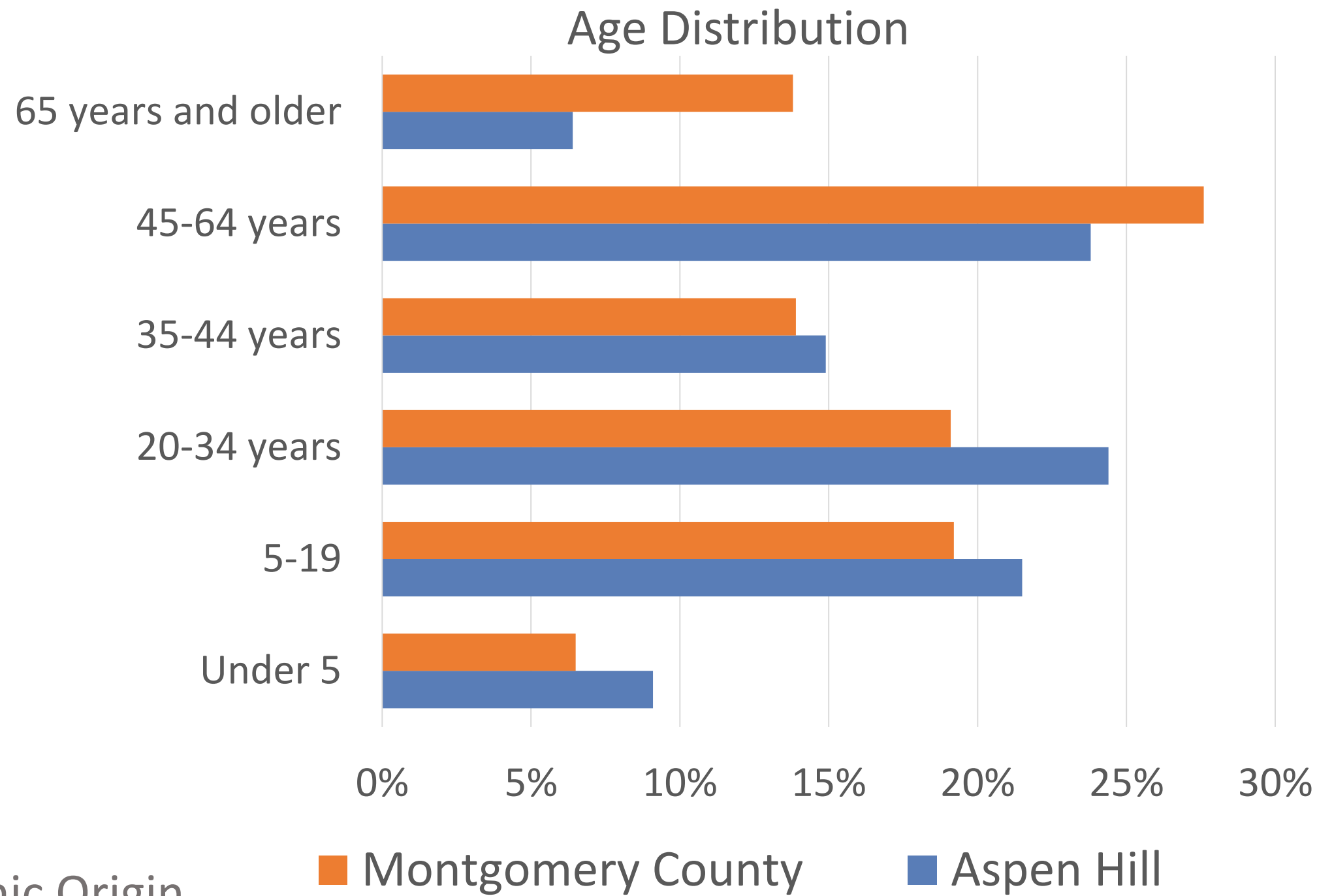


Source: Montgomery County Vision Zero Action Plan



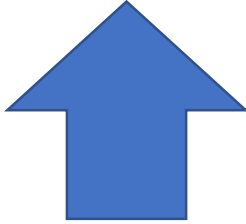
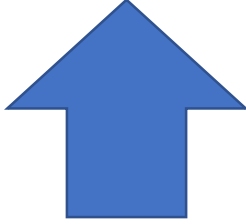
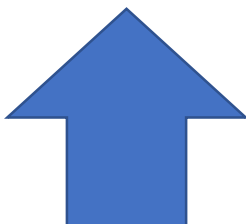
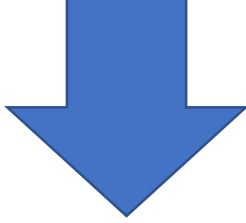
Aspen Hill Snapshot

- 11,300 People & 3,400 Households
- Majority Latino Population
- 1/3 Population under 19 years old
- 85% of households earn less than median income
- 20% commute by Public Transit



Source: U.S. Census Bureau, 2012-2016 American Community Survey 5-Year Estimates

Greater Crash Density in neighborhoods with:

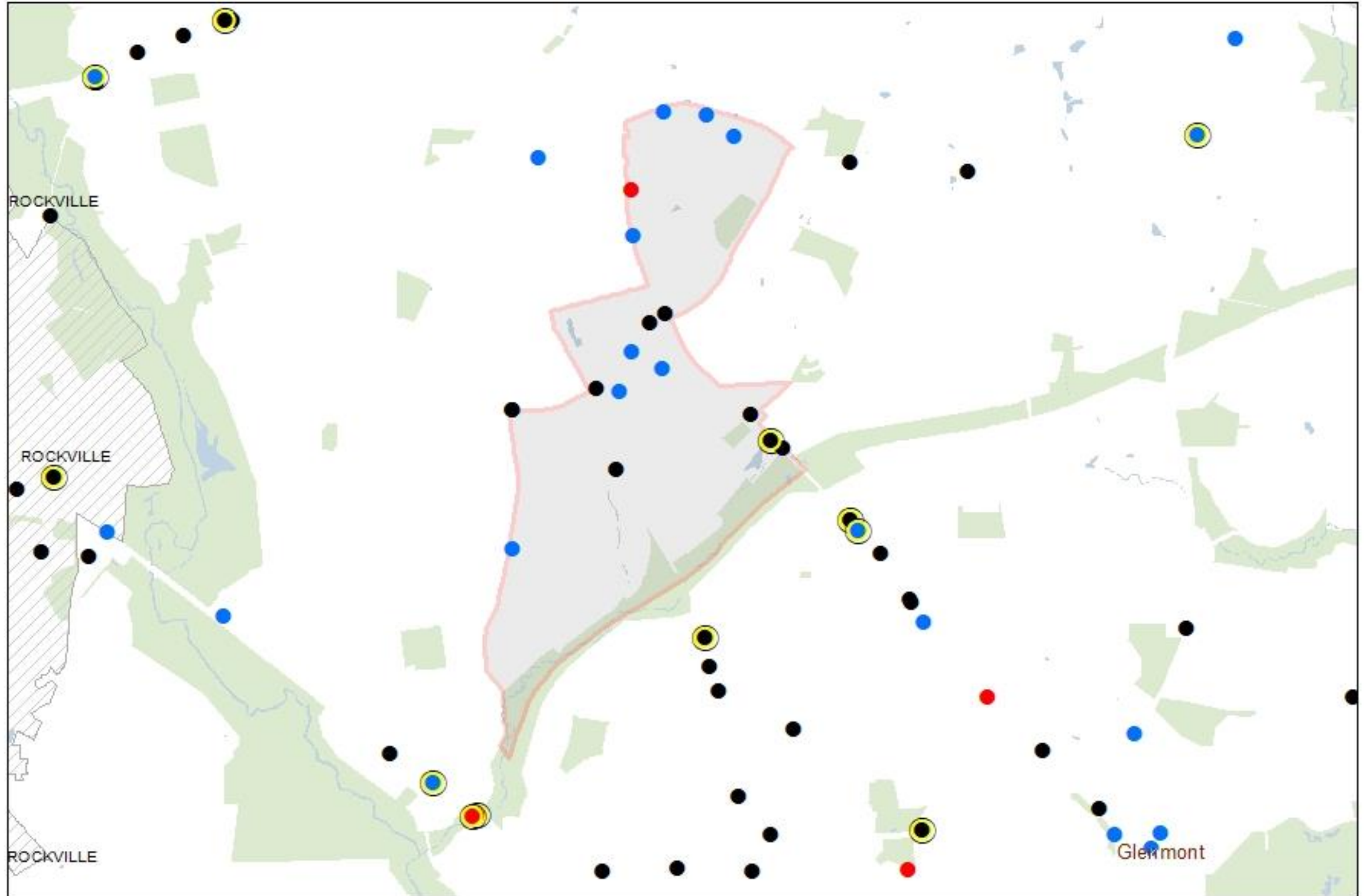
Higher 	Percentage of house holds that speak English less than very well
Higher 	Percentage of population that is Hispanic/Latino
Higher 	Percentage of households below the poverty level
Lower 	Median Age

Source: Montgomery County 2-Year Action Plan

Severe and Fatal Crashes in the Vicinity of Aspen Hill (2015-2017)

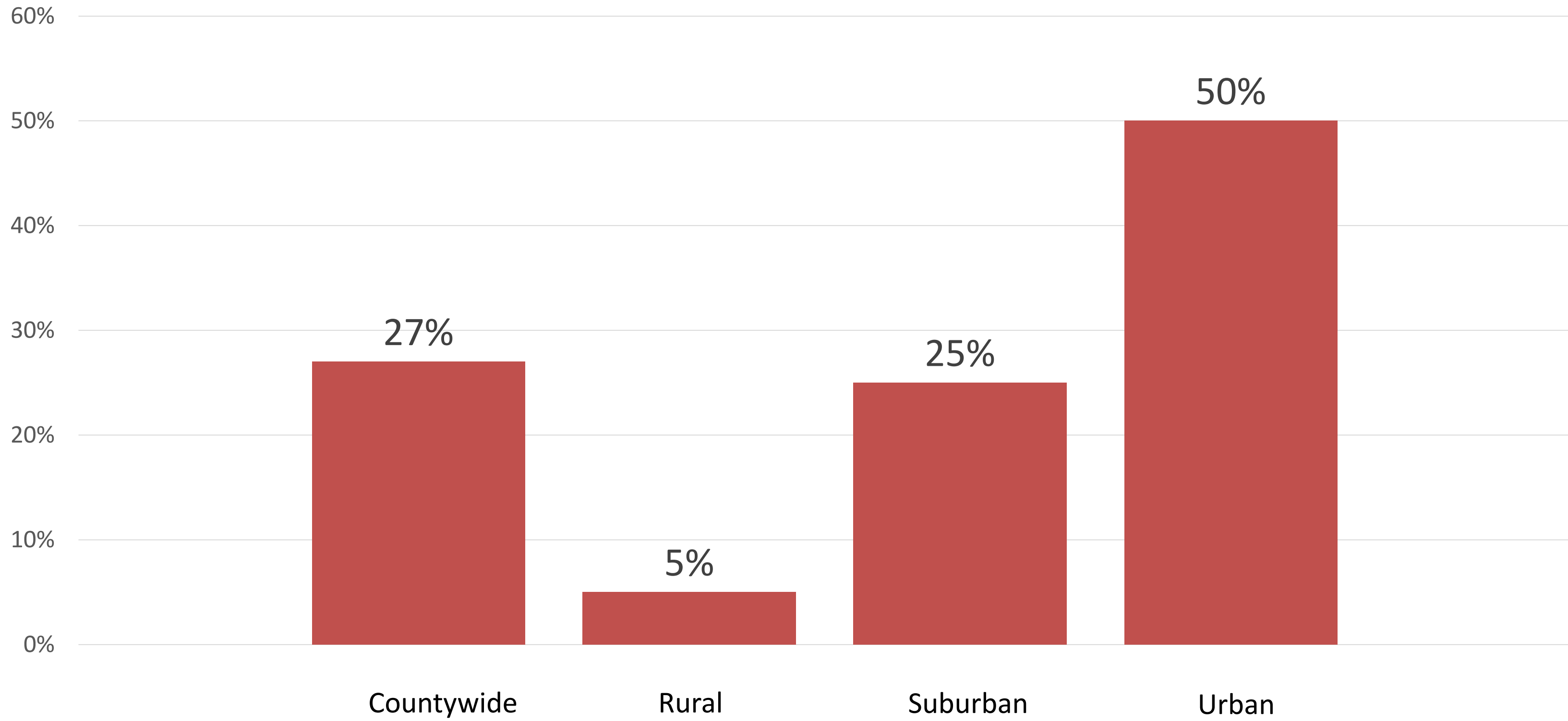
Crash Type

- Pedestrian (Severe)
- Pedestrian (Fatal)
- Bicyclist (Severe)
- Bicyclist (Fatal)
- Motor Vehicle Occupant (Severe)
- Motor Vehicle Occupant (Fatal)



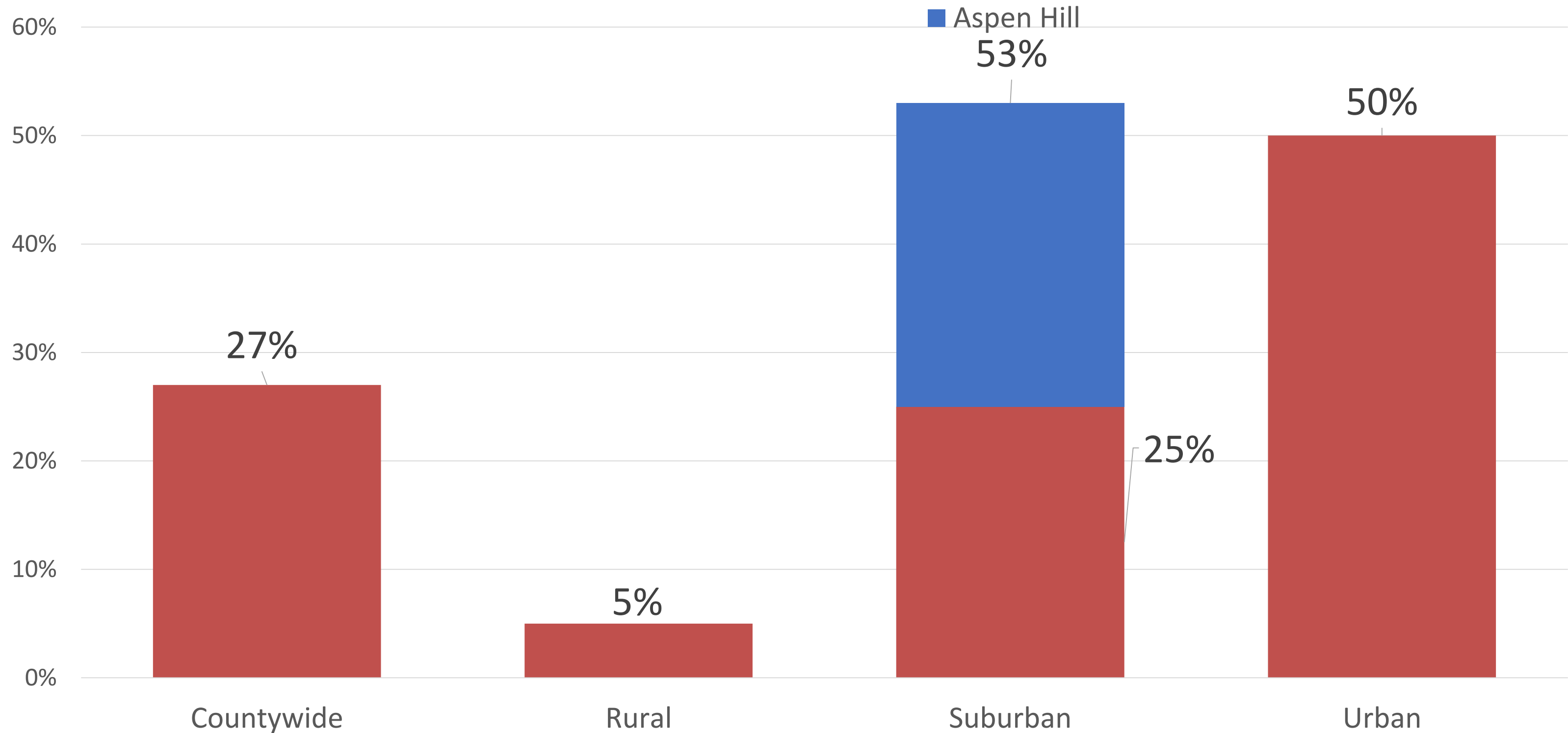
Source: County Stat, Montgomery County Planning

Percent of Severe/Fatal Crashes that are Pedestrians/Bicyclists



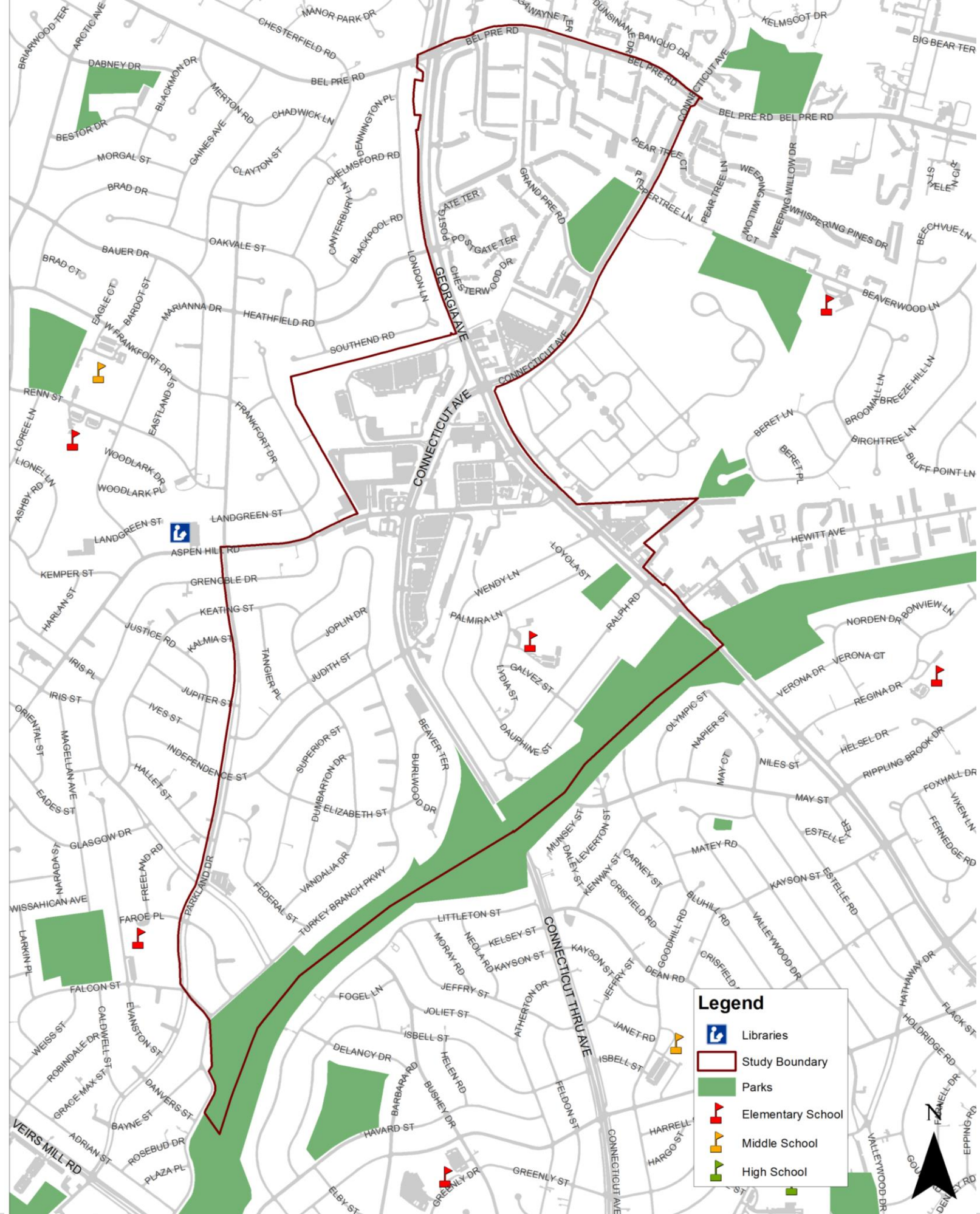
Source: County Stat, Montgomery County Planning

Percent of Severe/Fatal Crashes that are Pedestrians/Bicyclists



Source: County Stat, Montgomery County Planning

What will the Study do?



Role of the Planning Department

What We Do:

- Master Planning
- Regulatory Review
- Capital Improvement Plan Review
- Advocate and agent of change
- Collaborate with Agency Partners

What We Don't Do:

- Construct Roads, Sidewalks or Bikeways
- Install Traffic Signals or Crosswalks
- Enforce Traffic Laws



What will the study do?

- Meet with Community
- Gather Ideas and Input
- Collect Data
- Zoning Market Analysis
- Work with Agency Partners
- Develop Recommendations



Timeline

- August 2018 – March 2019 Community Engagement
- September 2018 – February 2019 Data Collection and Analysis
- April – June 2019 Develop Recommendations
- July – September 2019 Planning Board Review

Get involved – Website and eLetter

Aspen Hill Vision Zero study

Planning > Communities > Area 2 > Aspen Hill > Aspen Hill Vision Zero Study

The Aspen Hill Vision Zero Study will identify existing barriers to safety and explore ways to improve safety for all road users in the area. The study will rely on traditional data collection and analysis as well as new tools to identify issues and promote solutions. The study will bring together residents, civic associations, local businesses, County Departments, and other stakeholders.

During the planning process for the 2015 *Aspen Hill Minor Master Plan Amendment* and the *Veirs Mill Corridor Master Plan*, community members expressed interest in an update to the larger 1994 *Aspen Hill Master Plan*. Pedestrian safety at major intersections has been a common concern. In 2016, Montgomery County adopted *Vision Zero* and committed to eliminate severe traffic injuries and fatalities by 2030. Under Vision Zero, policy

Staff Contact

Maren Hill, Senior Planner (se habla español)
301-650-5613
[Email](#)

Sign Up For Our eLetter

Stay up-to-date with the latest news and information about the Aspen Hill Vision Zero Study

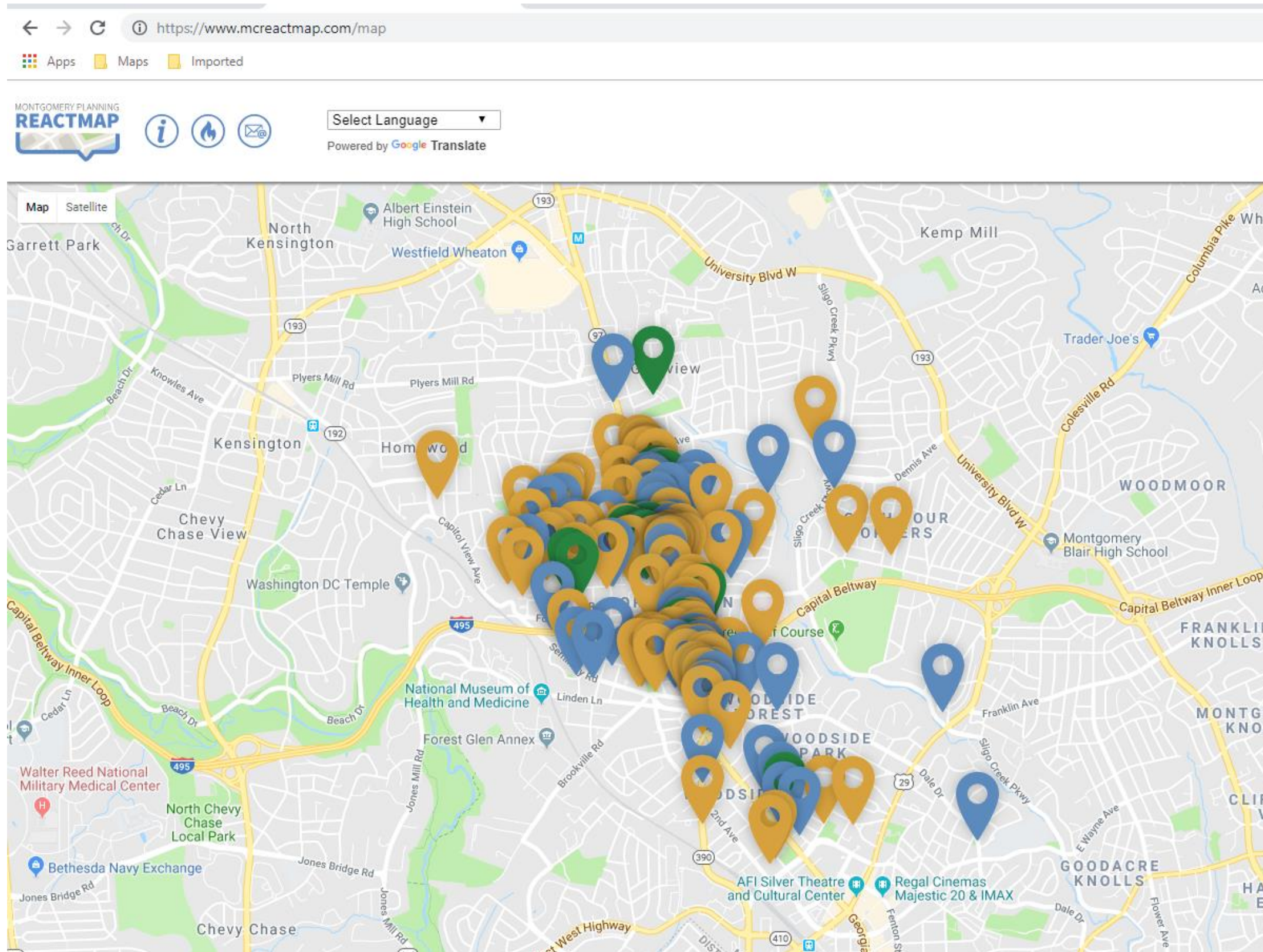
SIGN UP

Community Plans

Area 1

Area 2

Get involved – React Map



Get involved – Community Events



Join your neighbors for a walk around our neighborhood.

Learn about Montgomery Planning Department's Aspen Hill Vision Zero Study.

Sunday, October 7 at 9:30 AM

Meet at Aspen Hill Library (4407 Aspen Hill Rd)

Enjoy Healthy Snacks. All Ages Welcome!

For more information, please contact Adriana Hochberg at: adriana_hochberg@yahoo.com
Walk Maryland Day, sponsored by the Maryland Department of Health, promotes walking where Marylanders learn, work, and live.

Maryland Walk Day is sponsored by:



Maryland Department of Aging
Maryland Department of Natural Resources
Maryland Department of Transportation
Maryland State Department of Education

The Aspen Hill Community Walk is also sponsored by:



Sunday October 7th

Wednesday October 10th

Get involved – Walk Audit



WALK AUDIT CHECKLIST

STREET

BLOCK

Walk audits study the conditions of a community to identify challenges and opportunities to improve pedestrian safety and comfort. Below are characteristics to consider when walking through the community. Consider others in your community including the elderly, children, and people with limited mobility. Use one sheet [front and back] for each block of each street.

RATE ① Bad ② Acceptable ③ Good **COMMENTS** Please be specific

SIDEWALK

Is the sidewalk wide enough to comfortably walk with others?
① ② ③ **COMMENTS:** _____

What is the sidewalk condition [broken, trip hazards, etc.]?
① ② ③ **COMMENTS:** _____

Is the sidewalk often interrupted for cars [driveways, loading, etc.]?
① ② ③ **COMMENTS:** _____

Do intersections have ramps for wheelchairs, strollers, and carts?
① ② ③ **COMMENTS:** _____

STREET

Are there safe places to cross the street [how far between them]?
① ② ③ **COMMENTS:** _____

Does traffic move at a speed that feels safe walking by or crossing?
① ② ③ **COMMENTS:** _____

Are sidewalks separated from traffic [parkways, parking, trees, etc.]?
① ② ③ **COMMENTS:** _____

Do drivers yield to people crossing the street at crosswalks?
① ② ③ **COMMENTS:** _____

EXPERIENCE

Is there shade provided by trees, canopies, or building awnings?
① ② ③ **COMMENTS:** _____

Do buildings face the sidewalk [doors/windows or blank walls, etc.]?
① ② ③ **COMMENTS:** _____

Is there adequate lighting at night and an overall feeling of safety?
① ② ③ **COMMENTS:** _____

What is the condition of the area [trash, graffiti, blight, etc.]?
① ② ③ **COMMENTS:** _____



Get involved – Planning Department and Partner Meetings

- Pedestrian, Bicycle, and Traffic Safety Advisory Committee (PBTSAC)
 - 9/27 at Highland Elementary School from 7:00 – 9:30 PM
- Bicycle Master Plan
 - 10/1 Worksession with the Transportation & Energy Committee of the County Council
- Veirsmill Corridor Plan
 - 10/4 Worksession at the Montgomery County Planning Board
- Forest Glen/Montgomery Hills Sector Plan
 - 10/23 Community Meeting at 8787 Georgia Ave in Silver Spring from 6:00 – 8:00 PM

Questions | Comments | Connect

Maren Hill: Maren.Hill@montgomeryplanning.org

Walker Freer: Walker.Freer@montgomeryplanning.org

Website: montgomeryplanning.org/aspenhillvisionzero

Twitter: @montgomeryplans

Facebook: [Facebook.com/montgomerypl](https://www.facebook.com/montgomerypl)

Instagram: @montgomeryplanning



Questions | Comments | Connect

Planning Department:

- Maren Hill: Maren.Hill@montgomeryplanning.org
- Walker Freer: Walker.Freer@montgomeryplanning.org

Vision Zero County Executive Office:

- Wade Holland: Wade.Holland@montgomerycountymd.gov

Montgomery County Department of Transportation:

- Andrew Bossi: Andrew.Bossi@montgomerycountymd.gov
- John Hoobler: John.Hoobler@montgomerycountymd.gov