

YOUR RIDE IS HERE.



Corridor Cities Transitway Project Update

October 9, 2012



Locally Preferred Alternative

- May 11, 2012 Announcement by Governor O'Malley
 - Mode: Bus Rapid Transit
 - Overall Length: 15 miles
 - Stations: 16 proposed
 - Average Daily Ridership: 47,700
 - Maintenance Facility: Near Metropolitan Grove
 - BRT Vehicles: 68 articulated vehicles



LPA (cont.)

- Phased Construction
 - Phase I – Shady Grove to Metropolitan Grove
 - Phase II – Metropolitan Grove to COMSAT
- Projected Capital Cost
 - Total Project: \$828 million
 - Phase I: \$545 million
 - Phase II: \$283 million

LPA (cont.)

- One-way Travel Time
 - COMSAT to Shady Grove: 49 minutes
 - Metropolitan Grove to Shady Grove: 33 minutes
- Frequency of Service
 - Peak Periods: 6 minutes
 - Off Peak: 10 minutes



LPA and BRT Information

- Available on the Project Website
www.mta.maryland.gov/cct
- Other resources
 - Federal Transit Administration
 - Montgomery County DOT
 - Montgomery County Planning Department
 - National BRT Institute – www.nbrti.org



Schedule

- Fall 2012 - Letter of Introduction to FTA
- Winter 2012/13 - Approval to begin Project Development
- Fall 2014 – Complete Preliminary Engineering and Final Environmental Document
- Winter 2014/15 – Approval to begin Engineering
- Summer 2017 – Receive Full Funding Grant Agreement
- Summer 2017 – Begin Right-of Way Acquisition/Permitting/Agreements
- Fall 2018 – Begin Construction
- 2020 – Begin Service



Study Areas

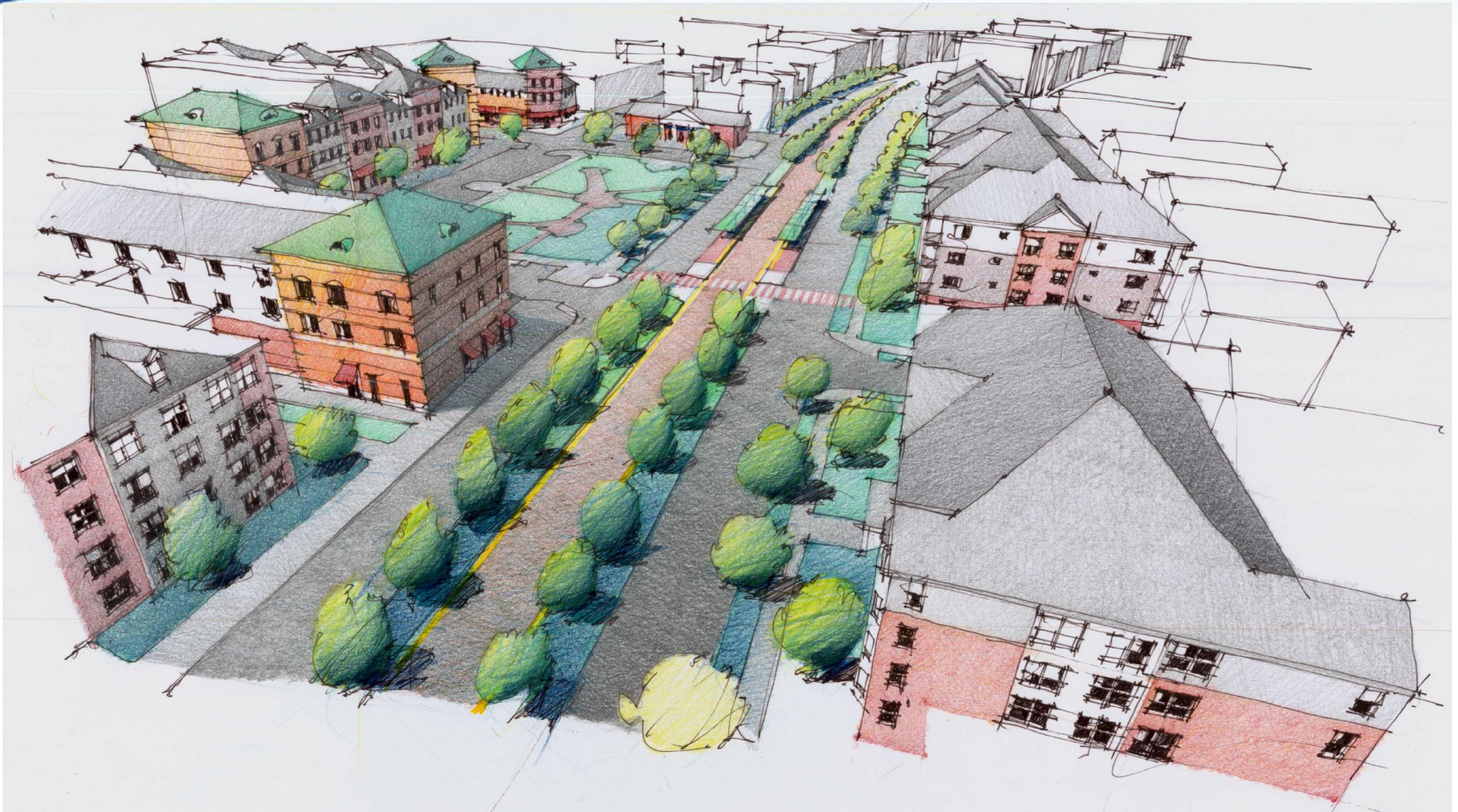
- Alignment Review and Modifications
- Preliminary Storm Water Management
- Traffic Analysis
 - Median Operations
 - Left Turn Locations
 - Corridor Simulation
- Stations
 - Location
 - Conceptual Design
 - Terminal Station Operations



Study Areas (cont.)

- Utility Identification
- Structural TS&L Evaluation
 - Bridges
 - Overpasses
 - Retaining Walls
- Review of “Early Start” Plan
- MAP-21

Renderings



King Farm Station – Side Platform

Renderings (cont.)



King Farm Station – Center Platform

Renderings (cont.)



Renderings (cont.)



Renderings (cont.)



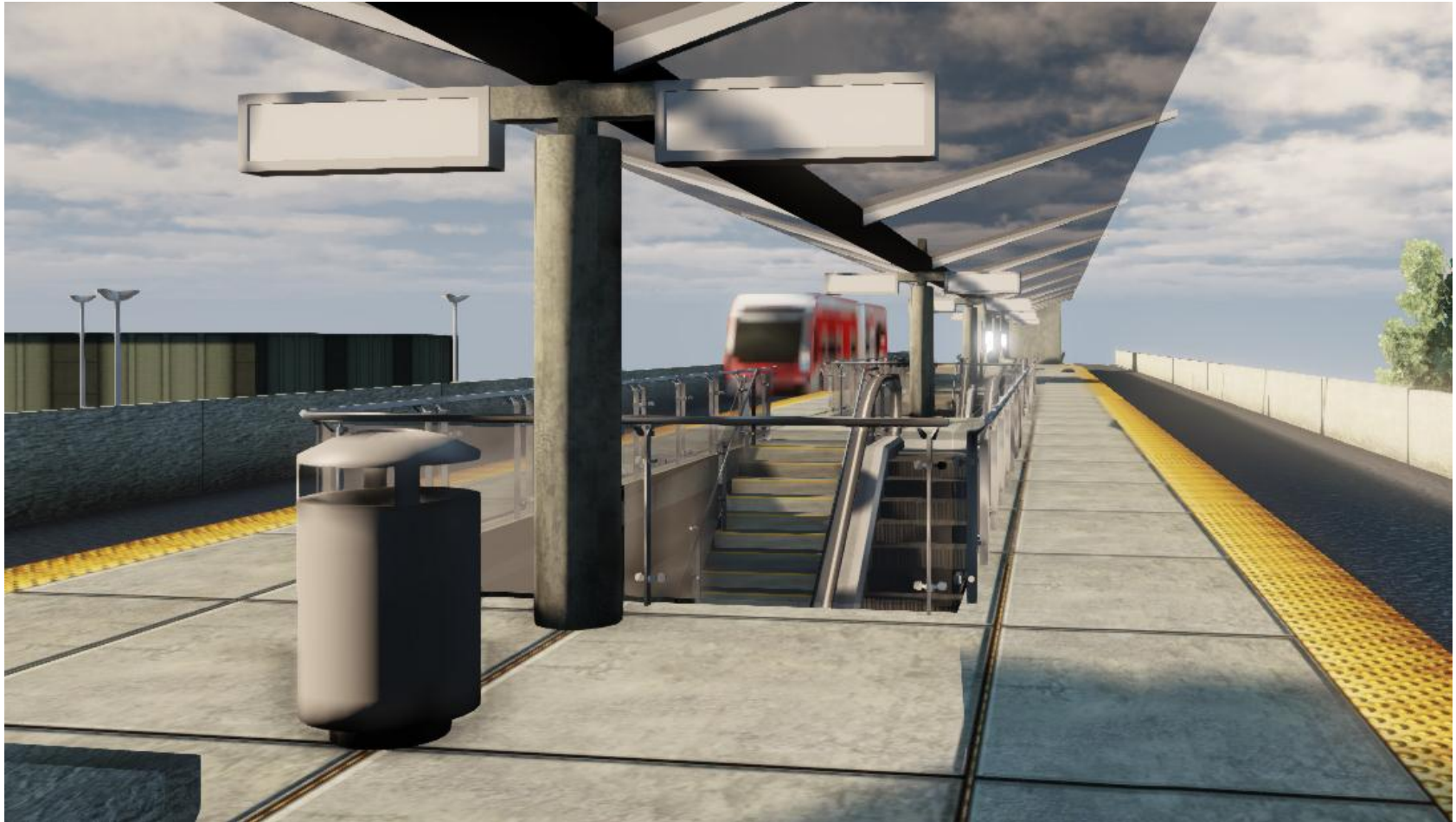
Kentlands Station

Renderings (cont.)



Kentlands Station

Renderings (cont.)



Kentlands Station

Public Outreach

- Newsletter
- Website
- Neighborhood Fall Festivals
- HOA Meetings
- Area Advisory Committees



Next Steps

- Seek FTA Approval to begin Project Development
- Conduct Preliminary Engineering
- Complete Environmental Process (Final Environmental Impact Statement)