

Corridor Cities Transitway

Analysis of Alignment Alternatives Serving Crown Farm, Life Sciences Center and Kentlands

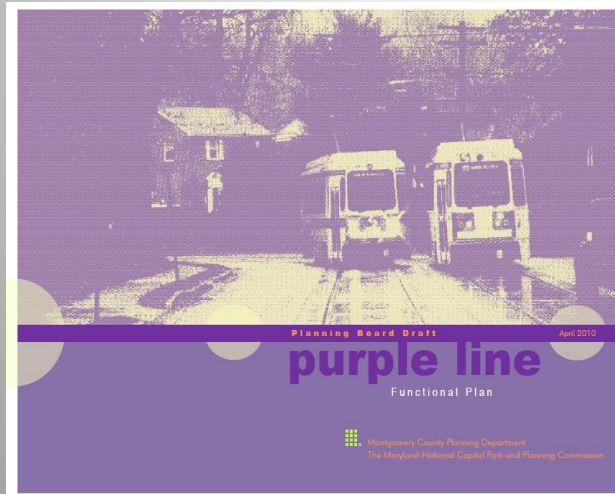
November 5, 2009



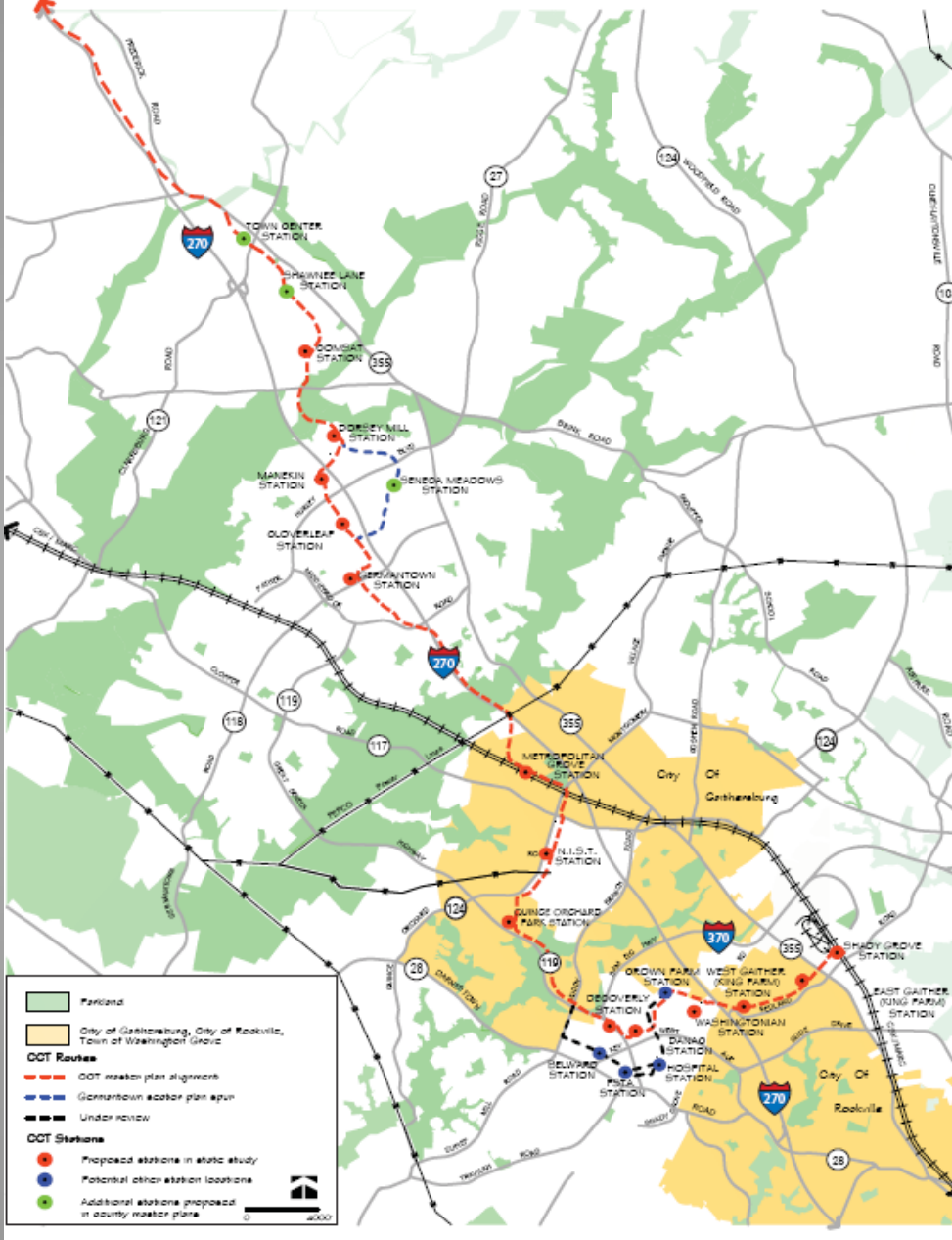
Office of Planning
6 St. Paul Street
Baltimore, Maryland 21202-1614

Transitway Planning Update

- Corridor Cities Transitway (CCT)
- Purple Line
- Countywide BRT Study



Corridor Cities Transitway Study Area



Corridor Cities Transitway

MDOT Studies

- I-270/US 15 Multimodal study
- Independent utility study

Northern CCT Terminus – COMSAT

MTA Alternate Alignments

- Crown Farm
- Life Sciences Center
- Kentlands

Corridor Cities Transitway

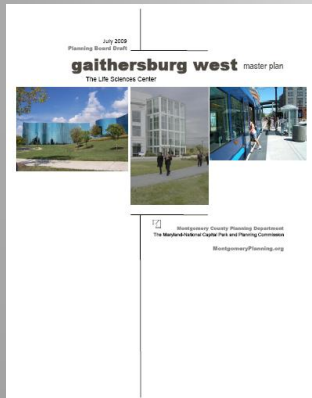
Analysis of Alignment Alternatives
Serving Crown Farm, Life
Sciences Center and Kentlands

November 6, 2009



Office of Planning
6 St. Paul Street
Baltimore, Maryland 21202-1614

Nov 2009 – MTA Analysis of
Revised Alignments



May 2010 – County
Council Approves
Great Seneca Science
Corridor Master Plan

CCT- Previous Milestones

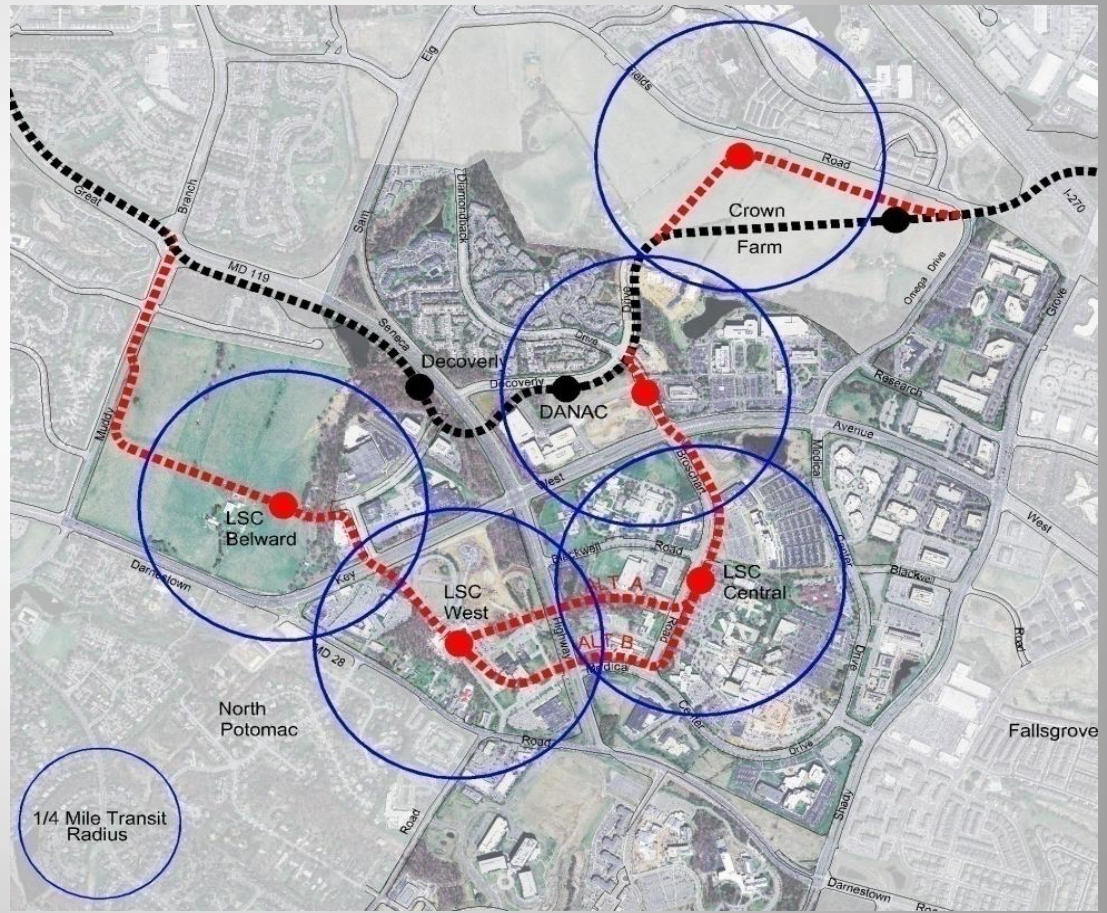
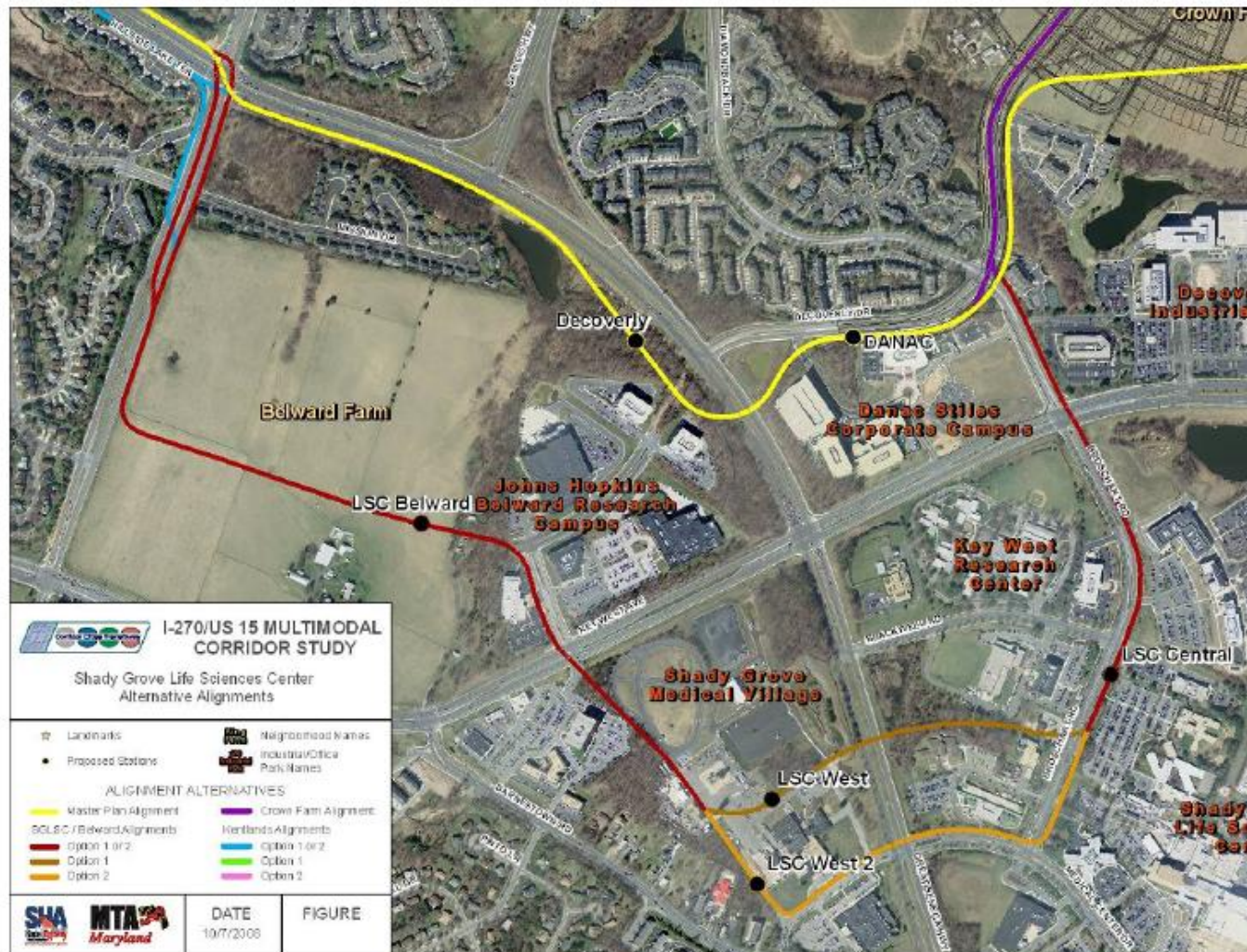


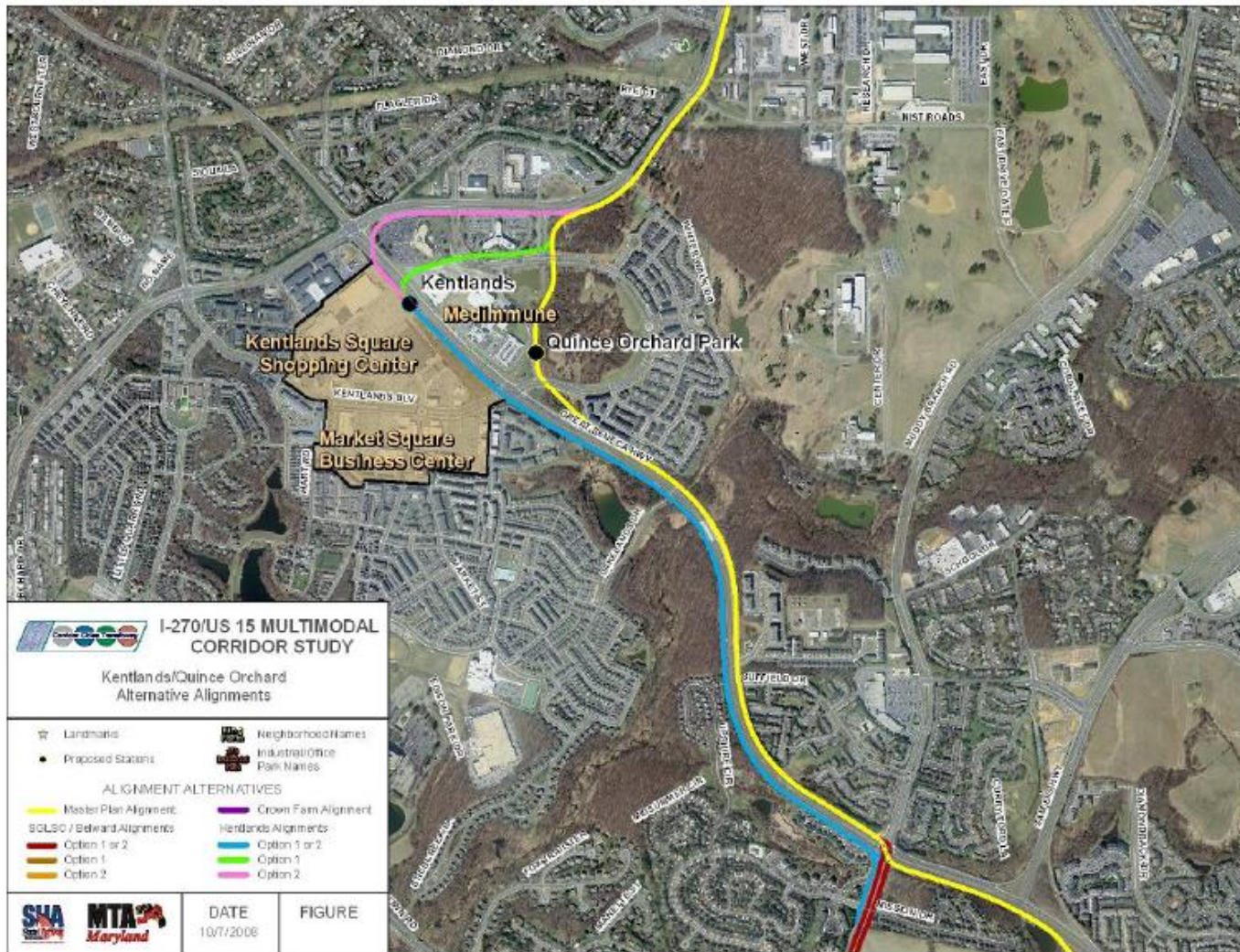


Figure 4: Alternative Alignment—Life Sciences Center

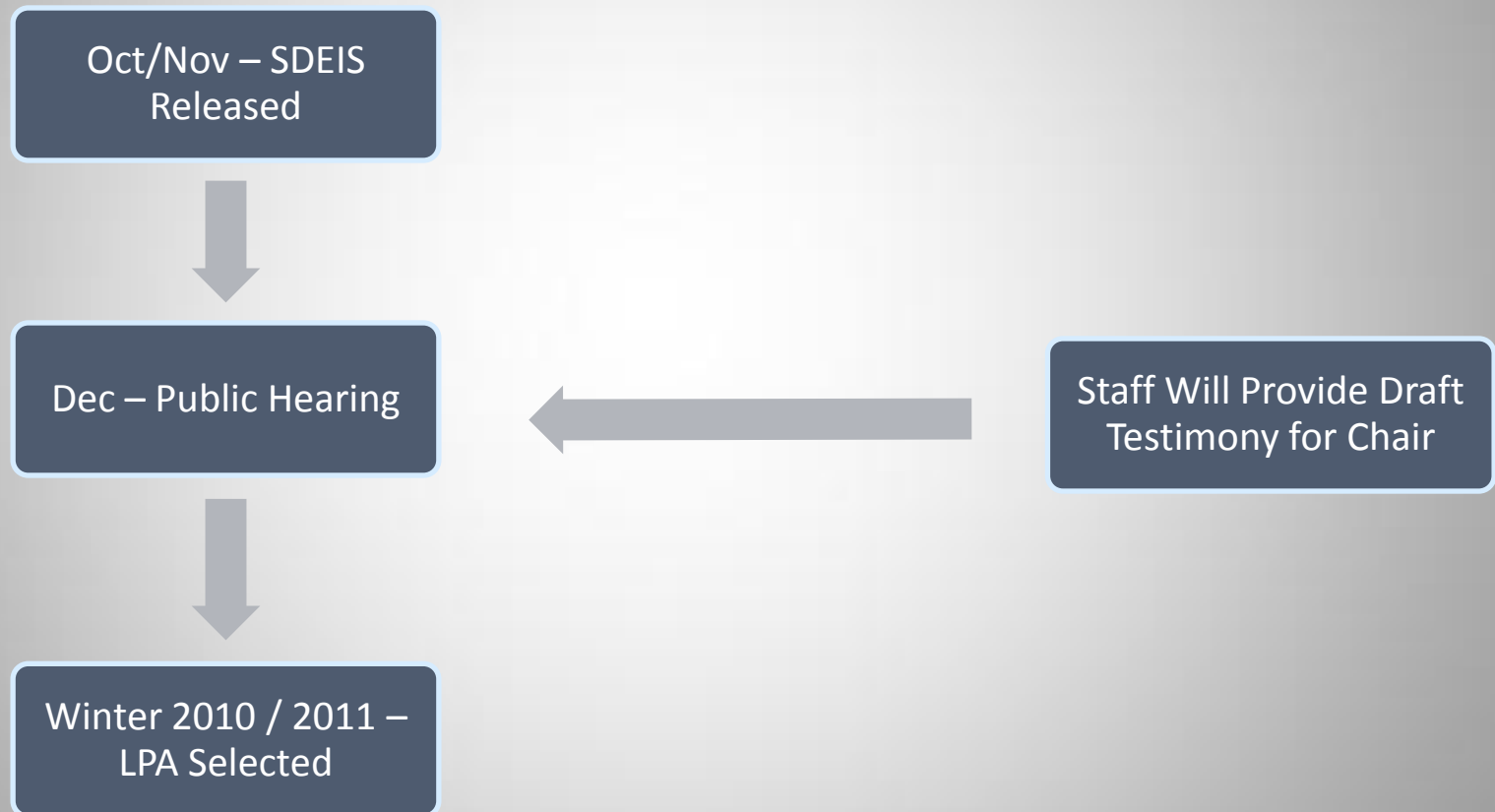


Belward Farm – Historical Setting

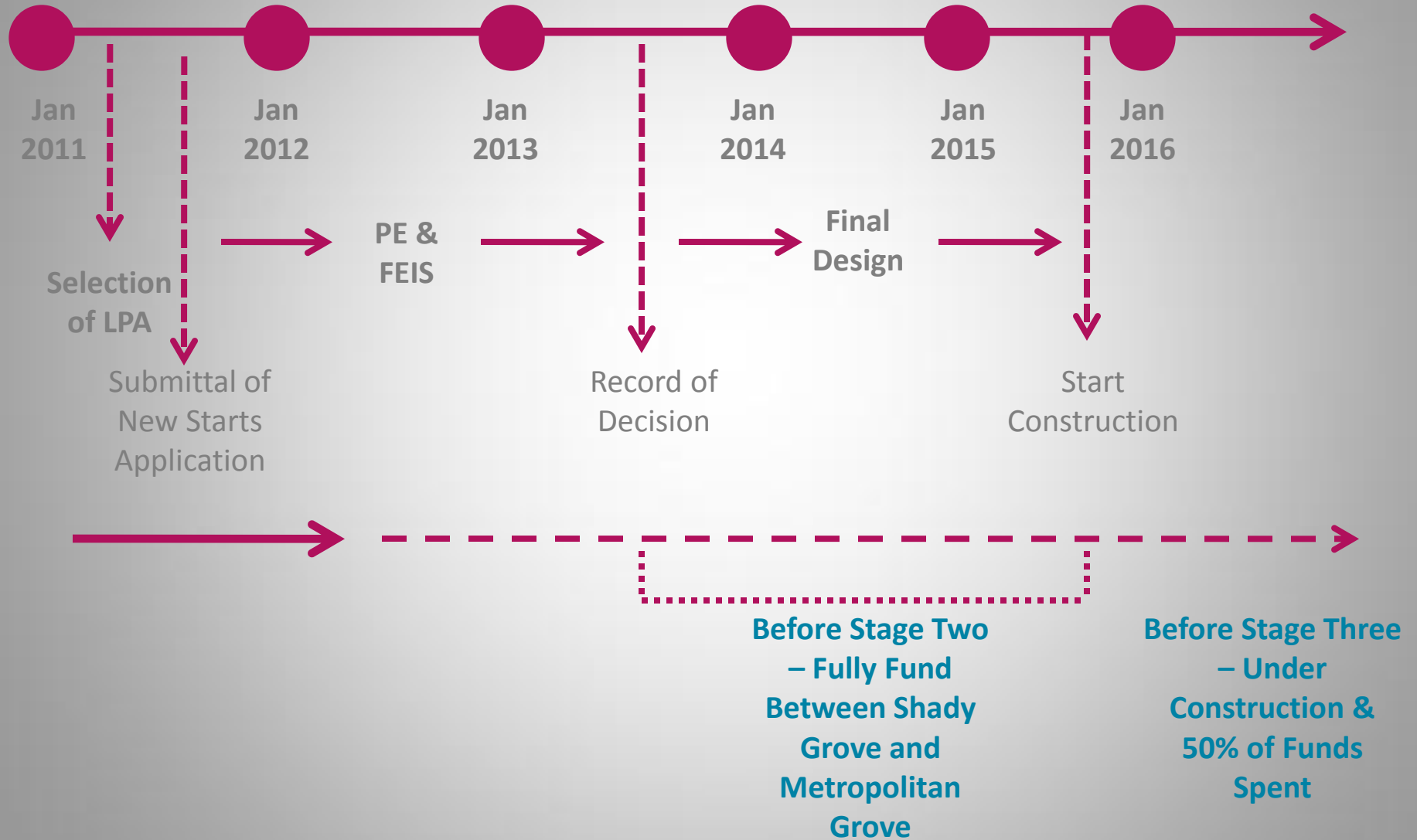




CCT – Study Milestones Leading to Selection of Locally Preferred Alternative (LPA)



GSSC Master Plan Staging



Draft Consolidated Transportation Program (\$000)

Purple Line	Current Year 2011	Budget Year 2012	2013	2014	2015	2016	Total
Planning	14,500	2,500	0	0	0	0	17,000
Engineering	7,500	27,500	57,800	43,100	0	0	135,900
ROW	0	0	20,200	63,900	0	0	84,100
Construction	0	0	0	0	0	0	0
Total	22,000	30,000	78,000	107,000	0	0	237,000
CCT							
Planning	4,000	7,000	0	0	0	0	11,000
Engineering	0	5,000	10,000	10,000	0	0	25,000
ROW	0	0	0	0	0	0	0
Construction	0	0	0	0	0	0	0
Total	4,000	12,000	10,000	10,000	0	0	36,000
Baltimore Red Line							
Planning	19,558	3,700	0	0	0	0	23,258
Engineering	6,000	30,300	48,600	50,000	0	0	134,900
ROW	0	0	10,400	32,500	0	0	42,900
Construction	0	0	0	0	0	0	0
Total	25,558	34,000	59,000	82,500	0	0	201,058

Purple Line Alignment

Bethesda
South

Connecticut
Avenue

Lyttonsville

16th Street

Silver Spring
Transit Center

Fenton
Street

Potential
Dale Drive

Manchester
Place

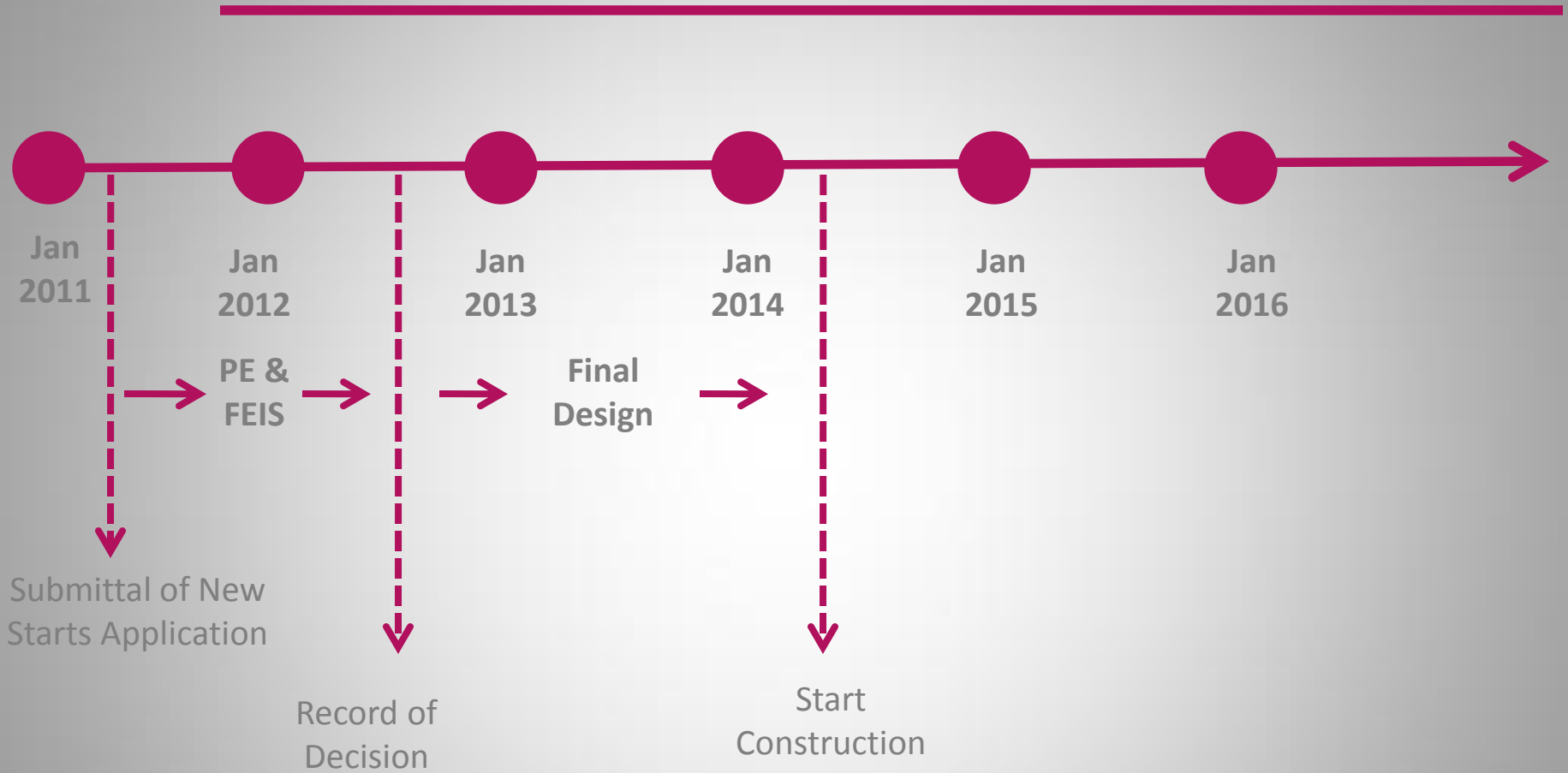
Arless
Street

Gilbert
Street

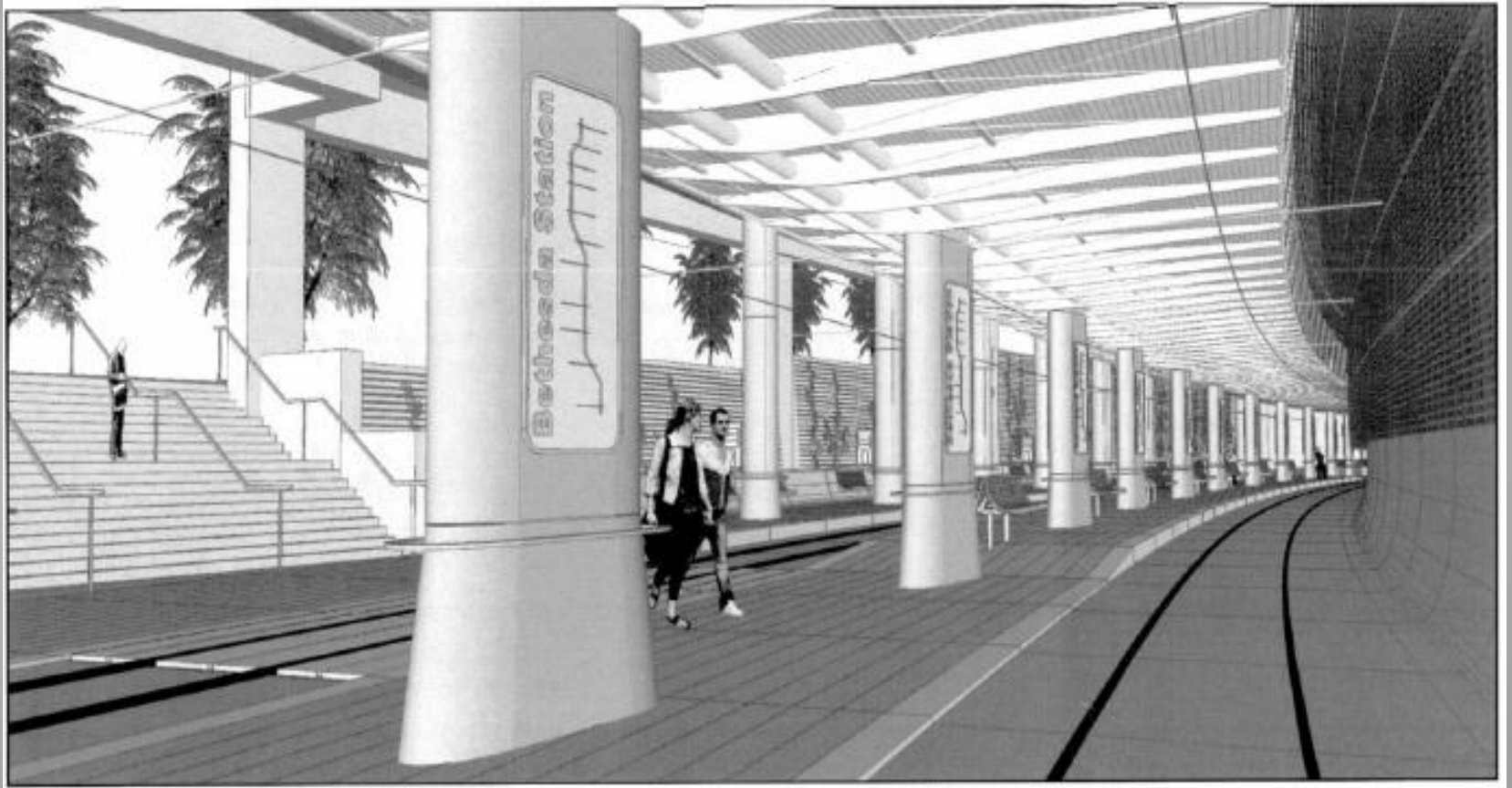
Takoma/Langley Park



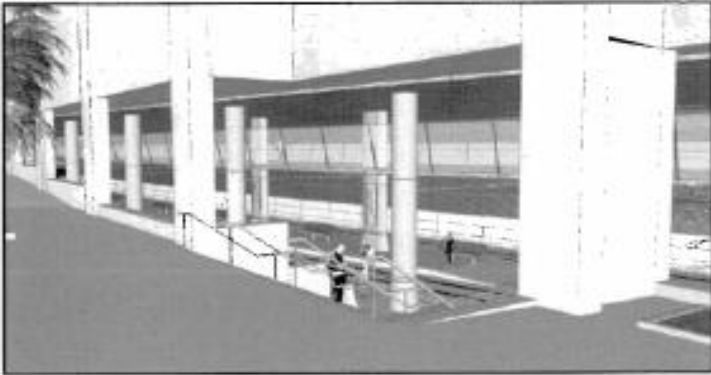
Purple Line – New Starts Process



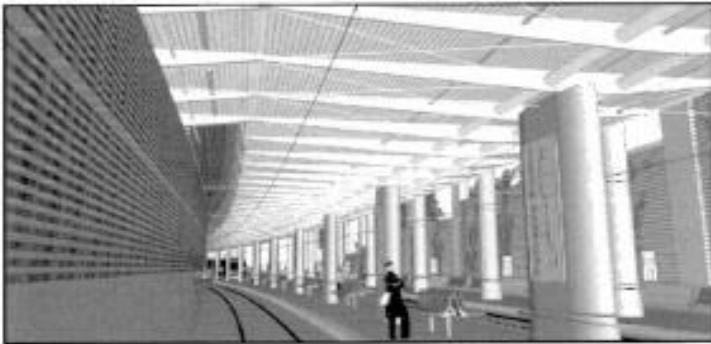
Bethesda South Concept



Bethesda South Concept



Station Entry Perspective



Pedestrian Bridge Underside Perspective



Pedestrian Bridge Deck Perspective - Retail Shop Shown



MTA Purple Line Standing Working Group

Sample Topics

Participants

Work Program Elements

Capital Crescent Trail

Green Trail

Bethesda South

Connecticut Avenue

Silver Spring Transit
Center

Bonifant Street

Arliss Street

Gilbert Street

Planning
Department

Department
of Parks

MCDOT

SHA

Fire &
Rescue

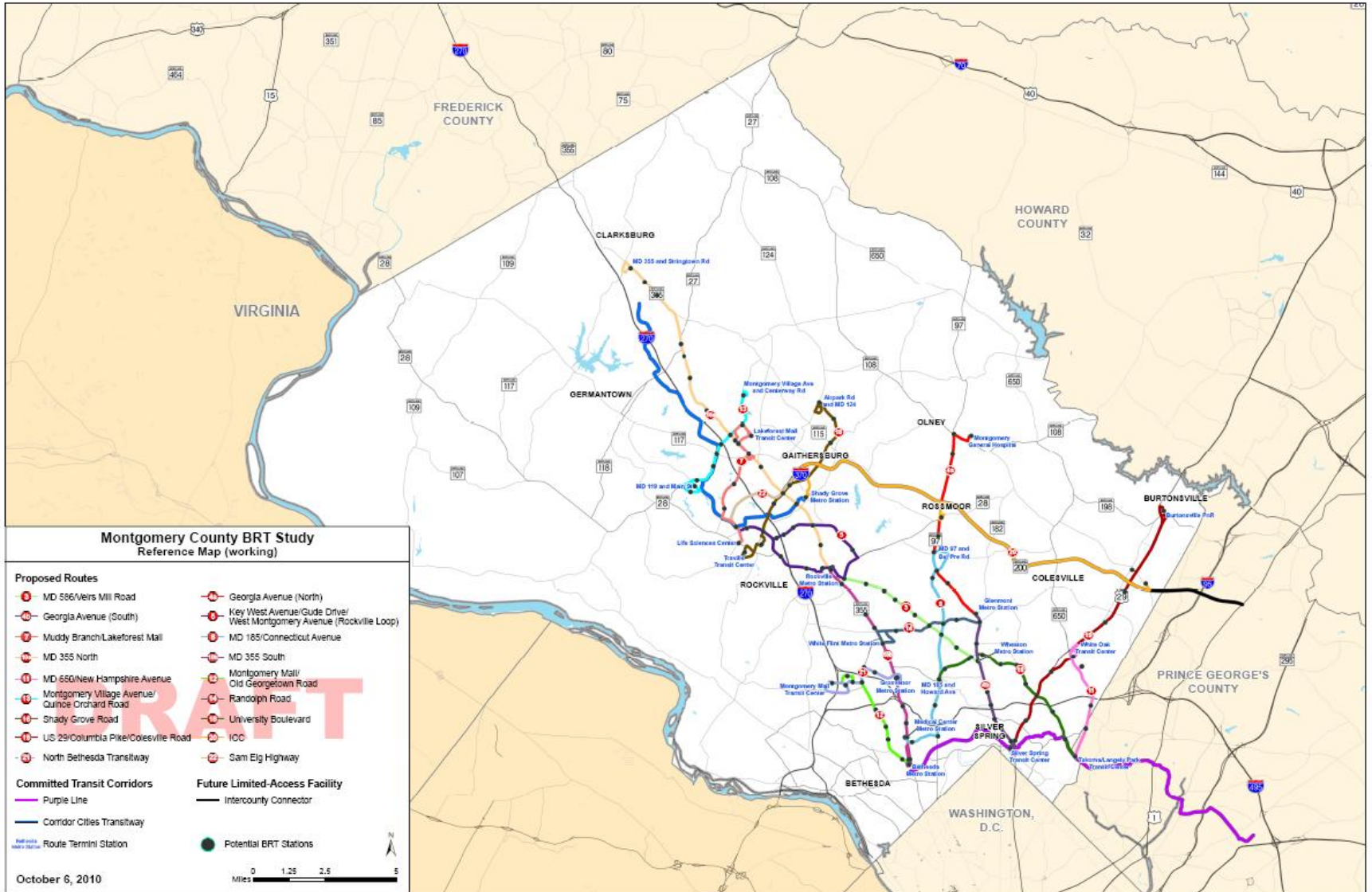
Chevy Chase Lake

Long Branch

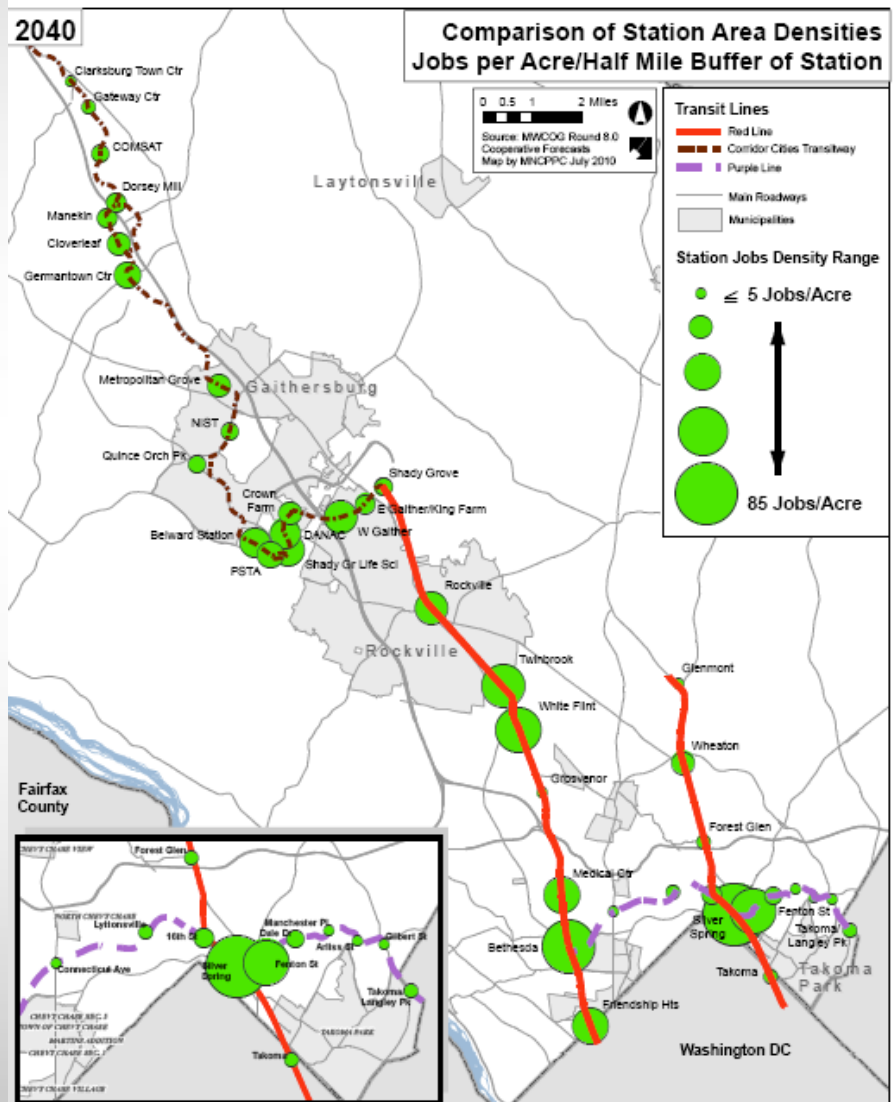
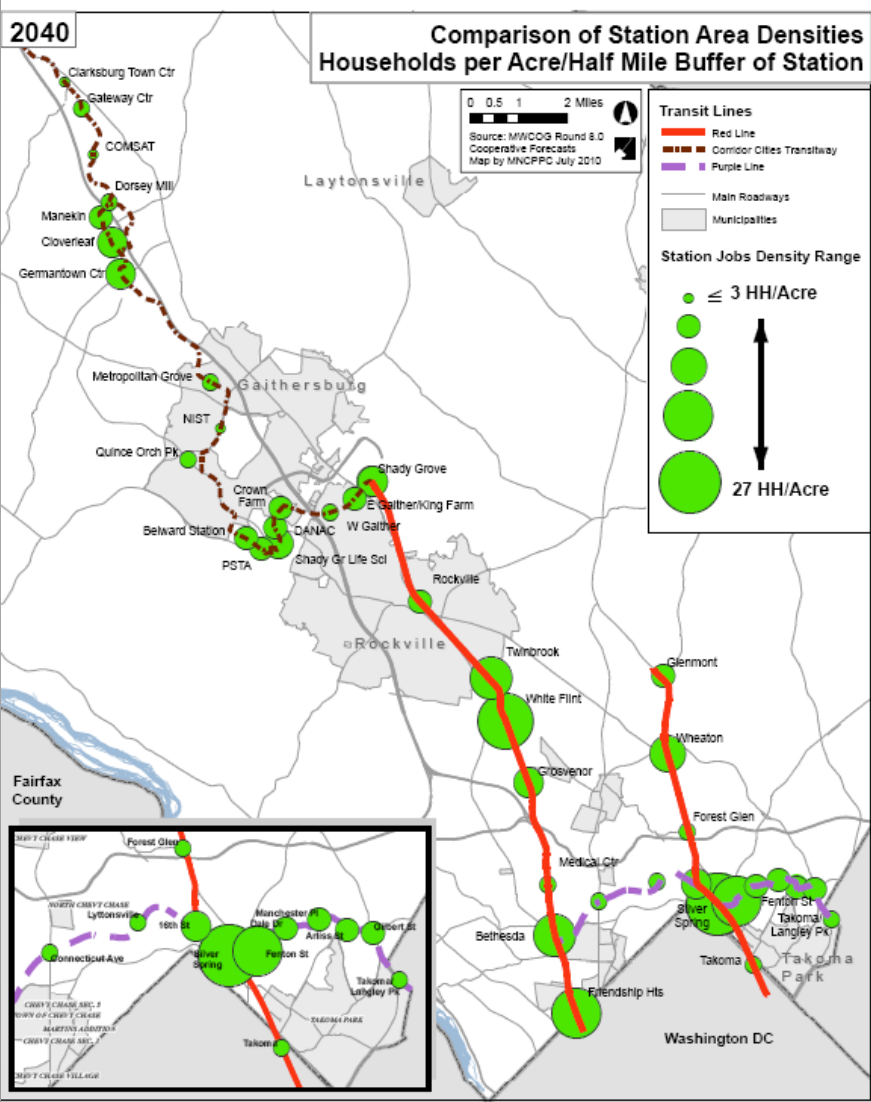
Town of Chevy Chase
Mitigation Group &
Other Outreach Efforts

Development Review

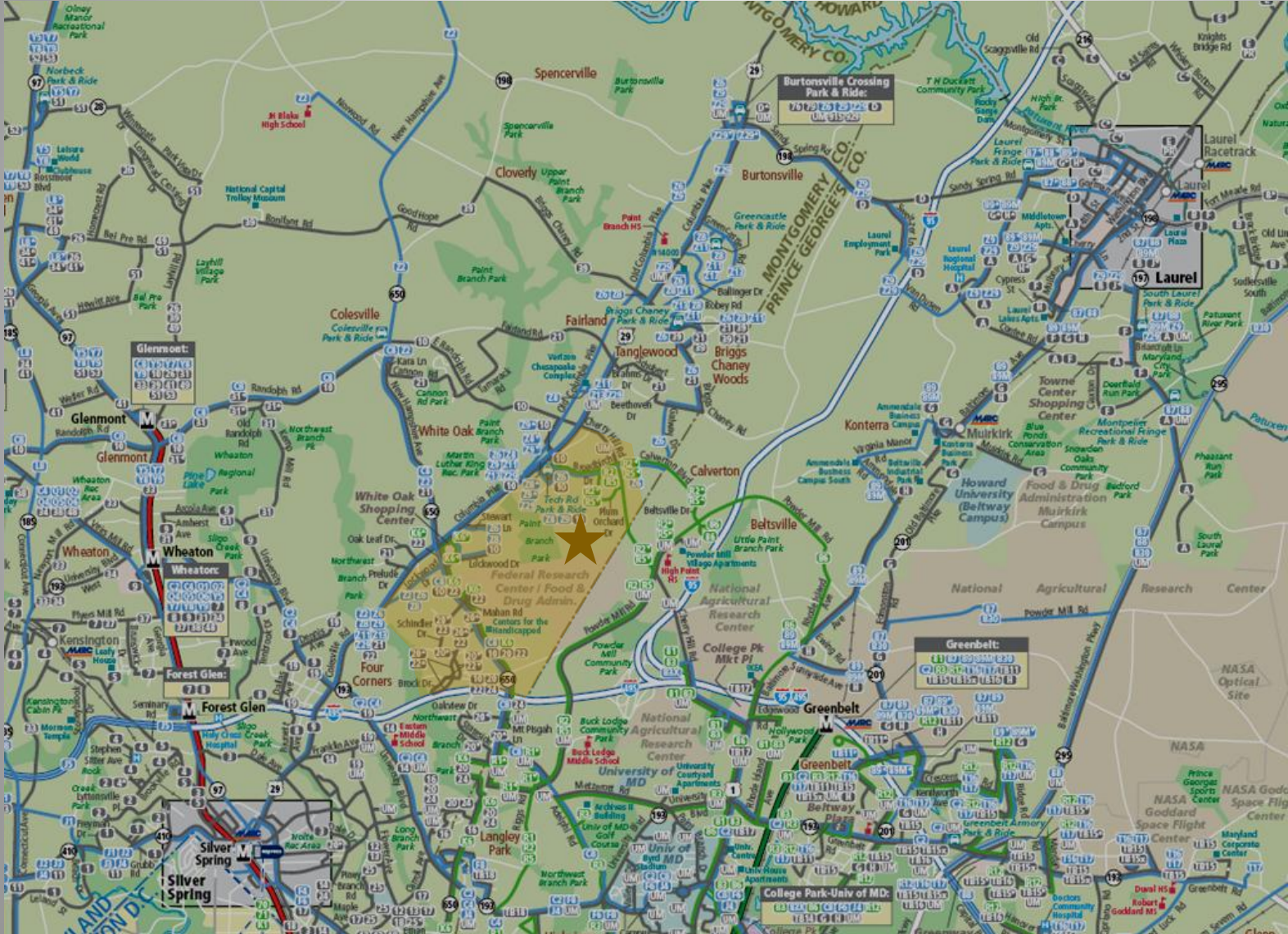
Countywide Bus Rapid Transit Study



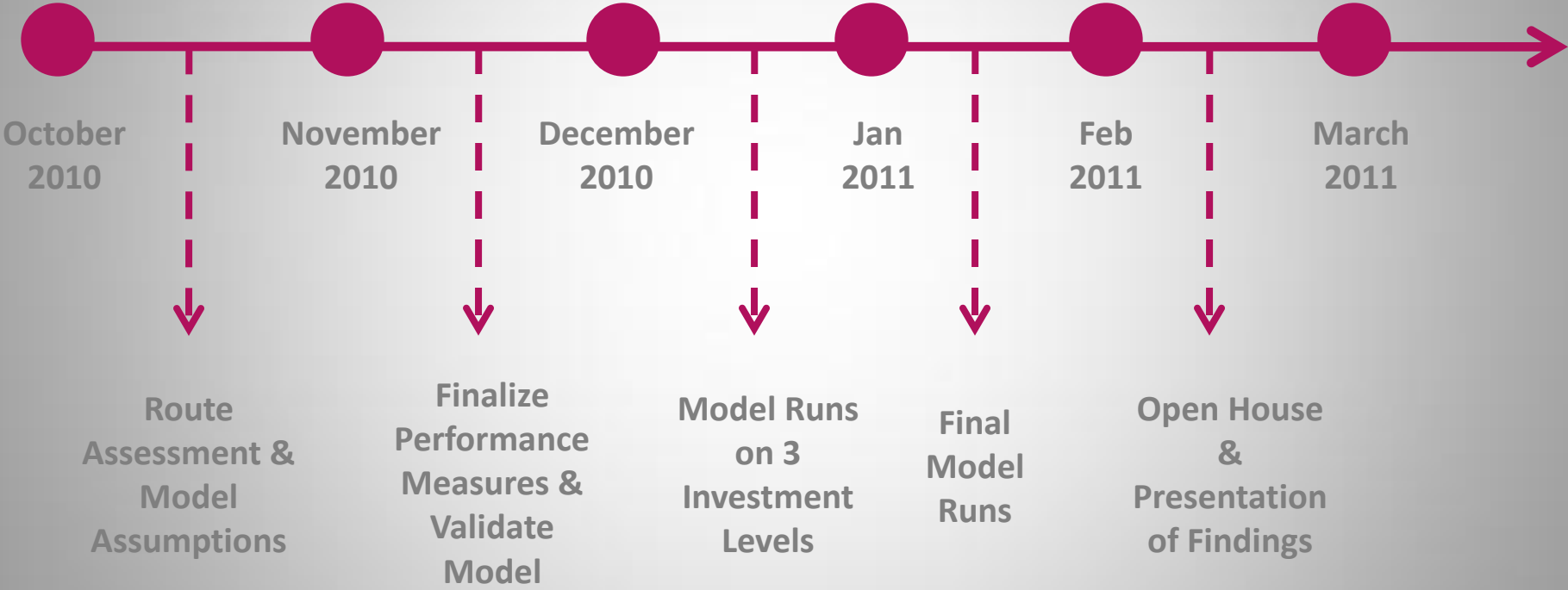
Station Area Densities



East County Transit Service Framework



Countywide Bus Rapid Transit Study



Countywide BRT Study – Informing Master Plans & Future Facility Planning

	White Flint	Kensington	Takoma Langley	Wheaton	Long Branch	Chevy Chase Lake	East County
Rockville Pike	●						
Veirs Mill Road				●			
University Blvd.		●		●	●		
Connecticut Ave.		●				●	
US 29							●
New Hampshire Ave.			●				●
Georgia Ave.				●			

Corridor Cities Transitway

Analysis of Alignment Alternatives Serving Crown Farm, Life Sciences Center and Kentlands

November 5, 2009



Office of Planning
6 St. Paul Street
Baltimore, Maryland 21202-1614

Transitway Planning Update

- Corridor Cities Transitway (CCT)
- Purple Line
- Countywide BRT Study

