

Annual Growth Policy: Draft School Test Options

March 29, 2007

Option #	Description	Test Elements						Possible Variations
		Capacity Applied in Test	Borrowing	School Levels Tested	Geography Tested	FY 2008 Results		
Option 1A	Current AGP Test	105% GP Cap. ES and MS 100% GP Cap. HS	At HS Level	ES, MS, HS	All Clusters	No Cluster Fails	Only test clusters at elementary level where most impact of new development occurs.	
Option 1B	Current AGP Test @ 100%	100% GP Cap. ES, MS, and HS	At HS Level	ES, MS, HS	All Clusters	Clarksburg Fails at ES Level	Only test clusters at elementary level where most impact of new development occurs.	
Option 1C	Current AGP Test @ 95%	95% GP Cap. ES, MS, and HS	At HS Level	ES, MS, HS	All Clusters	B-CC, Blake, Clarksburg, Kennedy, Northwest, Quince Orchard, and Springbrook fail at elementary level. Clarksburg fails at middle school level.	Only test clusters at elementary level where most impact of new development occurs.	
Option 2A	MCPS Pgm Capacity @ 100%	100% MCPS Cap. ES, MS, and HS	None	ES, MS, HS	All Clusters	B-CC, Blake, Clarksburg, Einstein, Walter Johnson, Kennedy, Magruder, Richard Montgomery, Northwest, Northwood, Quince Orchard, Rockville, Sherwood, Wheaton and Whitman all fail at elementary level. Churchill and Clarksburg fail at middle school level. Blake and Wootton fail at high school	Only fail an area if ES, MS and HS levels all fail test. Only test clusters at elementary level where most impact of new development occurs.	
Option 2B	MCPS Pgm Capacity @ 110%	110% MCPS Cap. ES, MS, and HS	None	ES, MS, HS	All Clusters	Blake, Clarksburg, Einstein, Kennedy, Northwest, and Wheaton fail at the elementary level. Clarksburg fails at middle school level. Wootton fails at high school level.	Only fail an area if ES, MS and HS levels all fail test. Only test clusters at elementary level where most impact of new development occurs.	
Option 2C	MCPS Pgm Capacity @ 115%	115% MCPS Cap. ES, MS, and HS	None	ES, MS, HS	All Clusters	Blake, Einstein, Kennedy fail at elementary level. Clarksburg fails at middle school level.	Only test clusters at elementary level where most impact of new development occurs.	
Option 3A	Current AGP Test	105% GP Cap. ES and MS 100% GP Cap. HS	At HS Level	ES, MS, HS	Clarksburg only	No failures at any level.	Only test clusters at elementary level where most impact of new development occurs.	
Option 3B	Current AGP Test @ 100% All	100% GP Cap. ES, MS, and HS	At HS Level	ES, MS, HS	Clarksburg only	Clarksburg fails at elementary level.	Only test clusters at elementary level where most impact of new development occurs.	
Option 3C	MCPS Pgm Capacity @ 110%	110% MCPS Cap. ES, MS, and HS	None	ES, MS, HS	Clarksburg only	Clarksburg fails at elementary and middle school levels.	Only test clusters at elementary level where most impact of new development occurs.	

Option 1A: Current AGP Test

Reflects Amended FY 2007-2012 Capital Improvements Program (CIP) and MCPS Enrollment Forecast

Elementary School Enrollment and MCPS Capacity

Cluster Area	Projected Sept. 2012 Enrollment	100% MCPS* Capacity With Council Amended FY07-12 CIP	Capacity Remaining @ 100% MCPS capacity
B- CC	3,023	2,753	-270
Blair	3,734	3,940	206
Blake	2,375	1,973	-402
Churchill	2,536	2,644	108
Clarksburg	3,586	3,153	-433
Damascus	2,513	2,429	-84
Einstein	2,235	1,758	-477
Gaithersburg	3,691	3,934	243
Walter Johnson	3,165	3,094	-71
Kennedy	2,355	1,798	-557
Magruder	2,545	2,523	-22
R. Montgomery	2,258	2,108	-150
Northwest	3,865	3,458	-407
Northwood	2,705	2,674	-31
Paint Branch	2,306	2,316	10
Poolesville	593	755	162
Quince Orchard	2,866	2,632	-234
Rockville	2,345	2,171	-174
Seneca Valley	2,098	2,187	89
Sherwood	2,506	2,464	-42
Springbrook	2,733	2,825	92
Watkins Mill	2,464	2,545	81
Wheaton	2,469	2,149	-320
Whitman	2,120	2,051	-69
Wootton	2,977	3,082	105

Growth Policy Test with Growth Policy (GP) Capacity

105% GP** Capacity With Council Amended FY07-12 CIP	Growth Policy Test: Students Above or Below 105 % GP Cap.	Growth Policy Test Result - Capacity is:
3,258	235	Adequate
5,268	1,534	Adequate
2,539	164	Adequate
3,123	587	Adequate
3,677	91	Adequate
2,886	373	Adequate
2,838	603	Adequate
4,998	1,307	Adequate
3,507	342	Adequate
2,477	122	Adequate
3,416	871	Adequate
2,562	304	Adequate
4,249	384	Adequate
3,068	363	Adequate
2,778	472	Adequate
851	258	Adequate
3,159	293	Adequate
3,169	824	Adequate
2,752	654	Adequate
2,936	430	Adequate
3,757	1,024	Adequate
3,334	870	Adequate
2,956	487	Adequate
2,365	245	Adequate
3,425	448	Adequate

Middle School Enrollment and MCPS Capacity

Cluster Area	Projected Sept. 2012 Enrollment	100% MCPS* Capacity With Council Amended FY07-12 CIP	Capacity Remaining @ 100% MCPS capacity
B- CC	999	1,037	38
Blair	1,916	2,260	344
Blake	1,130	1,304	174
Churchill	1,347	1,336	-11
Clarksburg	1,340	1,146	-194
Damascus	919	937	18
Einstein	851	1,408	557
Gaithersburg	1,373	1,784	411
Walter Johnson	1,492	1,778	286
Kennedy	1,149	1,295	146
Magruder	1,135	1,611	476
R. Montgomery	965	973	8
Northwest	1,875	1,964	89
Northwood	1,013	1,308	295
Paint Branch	1,147	1,308	161
Poolesville	350	472	122
Quince Orchard	1,291	1,647	356
Rockville	828	972	144
Seneca Valley	1,182	1,408	226
Sherwood	1,244	1,475	231
Springbrook	1,046	1,165	119
Watkins Mill	1,075	1,200	125
Wheaton	1,399	1,570	171
Whitman	1,170	1,266	96
Wootton	1,443	1,493	50

Growth Policy Test with Growth Policy (GP) Capacity

105% GP** Capacity With Council Amended FY07-12 CIP	Growth Policy Test: Students Above or Below 105 % GP Cap.	Growth Policy Test Result - Capacity is:
1,181	182	Adequate
2,622	706	Adequate
1,536	406	Adequate
1,630	283	Adequate
1,465	125	Adequate
1,134	215	Adequate
1,796	945	Adequate
2,292	919	Adequate
2,244	752	Adequate
1,607	458	Adequate
1,890	755	Adequate
1,229	264	Adequate
2,339	464	Adequate
1,725	712	Adequate
1,536	389	Adequate
543	193	Adequate
1,914	623	Adequate
1,205	377	Adequate
1,701	519	Adequate
1,701	457	Adequate
1,488	442	Adequate
1,370	295	Adequate
2,032	633	Adequate
1,465	295	Adequate
1,748	305	Adequate

In cases where elementary or middle schools articulate to more than one high school, enrollments and capacities are allocated proportionately to clusters.

High School Enrollment and MCPS Capacity

Cluster Area	Projected Sept. 2012 Enrollment	100% MCPS* Capacity With Council Amended FY07-12 CIP	Capacity Remaining @ 100% MCPS capacity
B- CC	1,622	1,656	34
Blair	2,410	2,840	430
Blake	1,800	1,733	-67
Churchill	1,885	1,985	100
Clarksburg	1,479	1,629	150
Damascus	1,437	1,625	188
Einstein	1,556	1,602	46
Gaithersburg	2,035	2,126	91
Walter Johnson	2,068	2,131	63
Kennedy	1,422	1,705	283
Magruder	1,757	1,999	242
R. Montgomery	1,895	1,966	71
Northwest	2,146	2,214	68
Northwood	1,361	1,526	165
Paint Branch	1,697	2,148	451
Poolesville	1,065	1,094	29
Quince Orchard	1,743	1,809	66
Rockville	1,125	1,598	473
Seneca Valley	1,391	1,497	106
Sherwood	2,054	2,054	0
Springbrook	1,947	2,148	201
Watkins Mill	1,634	1,836	202
Wheaton	1,404	1,472	68
Whitman	1,815	1,909	94
Wootton	2,308	2,018	-290

Growth Policy Test with Growth Policy (GP) Capacity

100% GP** Capacity With Council Amended FY07-12 CIP	Growth Policy Test: Students Above or Below 100 % GP Cap.	Borrowing Necessary?	Growth Policy Test Result - Capacity is:
1,710	88	no	Adequate
2,993	583	no	Adequate
1,778	-22	Paint Branch 396	Adequate
2,115	230	no	Adequate
1,643	164	no	Adequate
1,688	251	no	Adequate
1,800	244	no	Adequate
2,340	305	no	Adequate
2,363	295	no	Adequate
1,935	513	no	Adequate
2,115	358	no	Adequate
2,093	198	no	Adequate
2,295	149	no	Adequate
1,710	349	no	Adequate
2,093	396	no	Adequate
1,058	-7	Northwest 149	Adequate
1,980	237	no	Adequate
1,778	653	no	Adequate
1,665	274	no	Adequate
2,183	129	no	Adequate
2,273	326	no	Adequate
2,025	391	no	Adequate
1,643	239	no	Adequate
2,025	210	no	Adequate
2,183	-125	R. Montgomery 198	Adequate

Option 1B: Current AGP Test @ 100% GP Capacity All Levels

Reflects Amended FY 2007-2012 Capital Improvements Program (CIP) and MCPS Enrollment Forecast

Elementary School Enrollment and MCPS Capacity

Cluster Area	Projected Sept. 2012 Enrollment	100% MCPS* Capacity With Council Amended FY07-12 CIP	Capacity Remaining @ 100% MCPS capacity
B- CC	3,023	2,753	-270
Blair	3,734	3,940	206
Blake	2,375	1,973	-402
Churchill	2,536	2,644	108
Clarksburg	3,586	3,153	-433
Damascus	2,513	2,429	-84
Einstein	2,235	1,758	-477
Gaithersburg	3,691	3,934	243
Walter Johnson	3,165	3,094	-71
Kennedy	2,355	1,798	-557
Magruder	2,545	2,523	-22
R. Montgomery	2,258	2,108	-150
Northwest	3,865	3,458	-407
Northwood	2,705	2,674	-31
Paint Branch	2,306	2,316	10
Poolesville	593	755	162
Quince Orchard	2,866	2,632	-234
Rockville	2,345	2,171	-174
Seneca Valley	2,098	2,187	89
Sherwood	2,506	2,464	-42
Springbrook	2,733	2,825	92
Watkins Mill	2,464	2,545	81
Wheaton	2,469	2,149	-320
Whitman	2,120	2,051	-69
Wootton	2,977	3,082	105

Growth Policy Test with 100% Growth Policy (GP) Capacity

100% GP** Capacity With Council Amended FY07-12 CIP	Growth Policy Test: Students Above or Below 100 % GP Cap.	Growth Policy Test Result - Capacity is:
3,103	80	Adequate
4,417	683	Adequate
2,418	43	Adequate
2,974	438	Adequate
3,502	-84	Inadequate
2,749	236	Adequate
2,703	468	Adequate
4,760	1,069	Adequate
3,340	175	Adequate
2,359	4	Adequate
3,253	708	Adequate
2,440	182	Adequate
4,047	182	Adequate
2,922	217	Adequate
2,646	340	Adequate
810	217	Adequate
3,009	143	Adequate
3,018	673	Adequate
2,621	523	Adequate
2,796	290	Adequate
2,646	-87	Adequate
3,175	711	Adequate
2,815	346	Adequate
2,252	132	Adequate
3,262	285	Adequate

Middle School Enrollment and MCPS Capacity

Cluster Area	Projected Sept. 2012 Enrollment	100% MCPS* Capacity With Council Amended FY07-12 CIP	Capacity Remaining @ 100% MCPS capacity
B- CC	999	1,037	38
Blair	1,916	2,260	344
Blake	1,130	1,304	174
Churchill	1,347	1,336	-11
Clarksburg	1,340	1,146	-194
Damascus	919	937	18
Einstein	851	1,408	557
Gaithersburg	1,373	1,784	411
Walter Johnson	1,492	1,778	286
Kennedy	1,149	1,295	146
Magruder	1,135	1,611	476
R. Montgomery	965	973	8
Northwest	1,875	1,964	89
Northwood	1,013	1,308	295
Paint Branch	1,147	1,308	161
Poolesville	350	472	122
Quince Orchard	1,291	1,647	356
Rockville	828	972	144
Seneca Valley	1,182	1,408	226
Sherwood	1,244	1,475	231
Springbrook	1,046	1,165	119
Watkins Mill	1,075	1,200	125
Wheaton	1,399	1,570	171
Whitman	1,170	1,266	96
Wootton	1,443	1,493	50

Growth Policy Test with 100% Growth Policy (GP) Capacity

100% GP** Capacity With Council Amended FY07-12 CIP	Growth Policy Test: Students Above or Below 100 % GP Cap.	Growth Policy Test Result - Capacity is:
1,125	126	Adequate
2,498	582	Adequate
1,463	333	Adequate
1,553	206	Adequate
1,395	55	Adequate
1,080	161	Adequate
1,710	859	Adequate
2,183	810	Adequate
2,138	646	Adequate
1,530	381	Adequate
1,800	665	Adequate
1,170	205	Adequate
2,228	353	Adequate
1,643	630	Adequate
1,463	316	Adequate
518	168	Adequate
1,823	532	Adequate
1,148	320	Adequate
1,620	438	Adequate
1,620	376	Adequate
1,418	372	Adequate
1,305	230	Adequate
1,935	536	Adequate
1,395	225	Adequate
1,665	222	Adequate

In cases where elementary or middle schools articulate to more than one high school, enrollments and capacities are allocated proportionately to clusters.

High School Enrollment and MCPS Capacity

Cluster Area	Projected Sept. 2012 Enrollment	100% MCPS* Capacity With Council Amended FY07-12 CIP	Capacity Remaining @ 100% MCPS capacity
B- CC	1,622	1,656	34
Blair	2,410	2,840	430
Blake	1,800	1,733	-67
Churchill	1,885	1,985	100
Clarksburg	1,479	1,629	150
Damascus	1,437	1,625	188
Einstein	1,556	1,602	46
Gaithersburg	2,035	2,126	91
Walter Johnson	2,068	2,131	63
Kennedy	1,422	1,705	283
Magruder	1,757	1,999	242
R. Montgomery	1,895	1,966	71
Northwest	2,146	2,214	68
Northwood	1,361	1,526	165
Paint Branch	1,697	2,148	451
Poolesville	1,065	1,094	29
Quince Orchard	1,743	1,809	66
Rockville	1,125	1,598	473
Seneca Valley	1,391	1,497	106
Sherwood	2,054	2,054	0
Springbrook	1,947	2,148	201
Watkins Mill	1,634	1,836	202
Wheaton	1,404	1,472	68
Whitman	1,815	1,909	94
Wootton	2,308	2,018	-290

Growth Policy Test with Growth Policy (GP) Capacity

100% GP** Capacity With Council Amended FY07-12 CIP	Growth Policy Test: Students Above or Below 100 % GP Cap.	Borrowing Necessary?	Growth Policy Test Result - Capacity is:
1,710	88	no	Adequate
2,993	583	no	Adequate
1,778	-22	Paint Branch 396	Adequate
2,115	230	no	Adequate
1,643	164	no	Adequate
1,688	251	no	Adequate
1,800	244	no	Adequate
2,340	305	no	Adequate
2,363	295	no	Adequate
1,935	513	no	Adequate
2,115	358	no	Adequate
2,093	198	no	Adequate
2,295	149	no	Adequate
1,710	-349	no	Adequate
2,093	396	no	Adequate
1,058	-7	Northwest 149	Adequate
1,980	237	no	Adequate
1,778	653	no	Adequate
1,665	274	no	Adequate
2,183	129	no	Adequate
2,273	326	no	Adequate
2,025	391	no	Adequate
1,643	239	no	Adequate
2,025	210	no	Adequate
2,183	-125	R. Montgomery 198	Adequate

Option 1C: Current AGP Test @ 95% GP Capacity All Levels

Reflects Amended FY 2007-2012 Capital Improvements Program (CIP) and MCPS Enrollment Forecast

Elementary School Enrollment and MCPS Capacity

Cluster Area	Projected Sept. 2012 Enrollment	100% MCPS* Capacity With Council Amended FY07-12 CIP	Capacity Remaining @ 100% MCPS capacity
B- CC	3,023	2,753	-270
Blair	3,734	3,940	206
Blake	2,375	1,973	-402
Churchill	2,536	2,644	108
Clarksburg	3,586	3,153	-433
Damascus	2,513	2,429	-84
Einstein	2,235	1,758	-477
Gaithersburg	3,691	3,934	243
Walter Johnson	3,165	3,094	-71
Kennedy	2,355	1,798	-557
Magruder	2,545	2,523	-22
R. Montgomery	2,258	2,108	-150
Northwest	3,865	3,458	-407
Northwood	2,705	2,674	-31
Paint Branch	2,306	2,316	10
Poolesville	593	755	162
Quince Orchard	2,866	2,632	-234
Rockville	2,345	2,171	-174
Seneca Valley	2,098	2,187	89
Sherwood	2,506	2,464	-42
Springbrook	2,733	2,825	92
Watkins Mill	2,464	2,545	81
Wheaton	2,469	2,149	-320
Whitman	2,120	2,051	-69
Wootton	2,977	3,082	105

Growth Policy Test with 95% Growth Policy (GP) Capacity

95% GP** Capacity With Council Amended FY07-12 CIP	Growth Policy Test: Students Above or Below 95 % GP Cap.	Growth Policy Test Result - Capacity is:
2,948	-75	Inadequate
4,196	462	Adequate
2,297	-78	Inadequate
2,825	289	Adequate
3,327	-259	Inadequate
2,612	99	Adequate
2,568	333	Adequate
4,522	831	Adequate
3,173	8	Adequate
2,241	-114	Inadequate
3,090	545	Adequate
2,318	60	Adequate
3,845	-20	Inadequate
2,776	71	Adequate
2,514	208	Adequate
770	177	Adequate
2,859	-7	Inadequate
2,867	522	Adequate
2,490	392	Adequate
2,656	150	Adequate
2,514	-219	Inadequate
3,016	552	Adequate
2,674	205	Adequate
2,139	19	Adequate
3,099	122	Adequate

Middle School Enrollment and MCPS Capacity

Cluster Area	Projected Sept. 2012 Enrollment	100% MCPS* Capacity With Council Amended FY07-12 CIP	Capacity Remaining @ 100% MCPS capacity
B- CC	999	1,037	38
Blair	1,916	2,260	344
Blake	1,130	1,304	174
Churchill	1,347	1,336	-11
Clarksburg	1,340	1,146	-194
Damascus	919	937	18
Einstein	851	1,408	557
Gaithersburg	1,373	1,784	411
Walter Johnson	1,492	1,778	286
Kennedy	1,149	1,295	146
Magruder	1,135	1,611	476
R. Montgomery	965	973	8
Northwest	1,875	1,964	89
Northwood	1,013	1,308	295
Paint Branch	1,147	1,308	161
Poolesville	350	472	122
Quince Orchard	1,291	1,647	356
Rockville	828	972	144
Seneca Valley	1,182	1,408	226
Sherwood	1,244	1,475	231
Springbrook	1,046	1,165	119
Watkins Mill	1,075	1,200	125
Wheaton	1,399	1,570	171
Whitman	1,170	1,266	96
Wootton	1,443	1,493	50

Growth Policy Test with 95% Growth Policy (GP) Capacity

95% GP** Capacity With Council Amended FY07-12 CIP	Growth Policy Test: Students Above or Below 95 % GP Cap.	Growth Policy Test Result - Capacity is:
1,069	70	Adequate
2,373	457	Adequate
1,390	260	Adequate
1,475	128	Adequate
1,325	-15	Inadequate
1,026	107	Adequate
1,625	774	Adequate
2,074	701	Adequate
2,031	539	Adequate
1,454	305	Adequate
1,710	575	Adequate
1,112	147	Adequate
2,117	242	Adequate
1,561	548	Adequate
1,390	243	Adequate
492	142	Adequate
1,732	441	Adequate
1,091	263	Adequate
1,539	357	Adequate
1,539	295	Adequate
1,347	301	Adequate
1,240	165	Adequate
1,838	439	Adequate
1,325	155	Adequate
1,665	222	Adequate

In cases where elementary or middle schools articulate to more than one high school, enrollments and capacities are allocated proportionately to clusters.

High School Enrollment and MCPS Capacity

Cluster Area	Projected Sept. 2012 Enrollment	100% MCPS* Capacity With Council Amended FY07-12 CIP	Capacity Remaining @ 100% MCPS capacity
B- CC	1,622	1,656	34
Blair	2,410	2,840	430
Blake	1,800	1,733	-67
Churchill	1,885	1,985	100
Clarksburg	1,479	1,629	150
Damascus	1,437	1,625	188
Einstein	1,556	1,602	46
Gaithersburg	2,035	2,126	91
Walter Johnson	2,068	2,131	63
Kennedy	1,422	1,705	283
Magruder	1,757	1,999	242
R. Montgomery	1,895	1,966	71
Northwest	2,146	2,214	68
Northwood	1,361	1,526	165
Paint Branch	1,697	2,148	451
Poolesville	1,065	1,094	29
Quince Orchard	1,743	1,809	66
Rockville	1,125	1,598	473
Seneca Valley	1,391	1,497	106
Sherwood	2,054	2,054	0
Springbrook	1,947	2,148	201
Watkins Mill	1,634	1,836	202
Wheaton	1,404	1,472	68
Whitman	1,815	1,909	94
Wootton	2,308	2,018	-290

Growth Policy Test with 95% Growth Policy (GP) Capacity

95% GP** Capacity With Council Amended FY07-12 CIP	Growth Policy Test: Students Above or Below 95 % GP Cap.	Borrowing Necessary?	Growth Policy Test Result - Capacity is:
1,625	3	no	Adequate
2,843	433	no	Adequate
1,689	-111	Paint Branch 291	Adequate
2,009	124	no	Adequate
1,561	82	no	Adequate
1,604	167	no	Adequate
1,710	154	no	Adequate
2,223	188	no	Adequate
2,245	177	no	Adequate
1,838	416	no	Adequate
2,009	252	no	Adequate
1,988	93	no	Adequate
2,180	34	no	Adequate
1,625	264	no	Adequate
1,988	291	no	Adequate
1,005	-60	Clarksburg 82	Adequate
1,881	138	no	Adequate
1,689	564	no	Adequate
1,582	191	no	Adequate
2,074	20	no	Adequate
2,159	212	no	Adequate
1,924	290	no	Adequate
1,561	157	no	Adequate
1,924	109	no	Adequate
2,074	-234	Churchill 124 and Q.O. 138	Adequate

Option 2A: MCPS Program Capacity @ 100%

Reflects Amended FY 2007-2012 Capital Improvements Program (CIP) and MCPS Enrollment Forecast

Elementary School Enrollment and MCPS Capacity @ 100%

Cluster Area	Projected Sept. 2012 Enrollment	100% MCPS* Capacity With Council Amended FY07-12 CIP	Capacity Remaining @ 100% MCPS capacity	Growth Policy Test Result Capacity is:
B- CC	3,023	2,753	-270	Inadequate
Blair	3,734	3,940	206	Adequate
Blake	2,375	1,973	-402	Inadequate
Churchill	2,536	2,644	108	Adequate
Clarksburg	3,586	3,153	-433	Inadequate
Damascus	2,513	2,429	-84	Inadequate
Einstein	2,235	1,758	-477	Inadequate
Gaithersburg	3,691	3,934	243	Adequate
Walter Johnson	3,165	3,094	-71	Inadequate
Kennedy	2,355	1,798	-557	Inadequate
Magruder	2,545	2,523	-22	Inadequate
R. Montgomery	2,258	2,108	-150	Inadequate
Northwest	3,865	3,458	-407	Inadequate
Northwood	2,705	2,674	-31	Inadequate
Paint Branch	2,306	2,316	10	Adequate
Poolesville	593	755	162	Adequate
Quince Orchard	2,866	2,632	-234	Inadequate
Rockville	2,345	2,171	-174	Inadequate
Seneca Valley	2,098	2,187	89	Adequate
Sherwood	2,506	2,464	-42	Inadequate
Springbrook	2,733	2,825	92	Adequate
Watkins Mill	2,464	2,545	81	Adequate
Wheaton	2,469	2,149	-320	Inadequate
Whitman	2,120	2,051	-69	Inadequate
Wootton	2,977	3,082	105	Adequate

Middle School Enrollment and MCPS Capacity @ 100%

Cluster Area	Projected Sept. 2012 Enrollment	100% MCPS* Capacity With Council Amended FY07-12 CIP	Capacity Remaining @ 100% MCPS capacity	Growth Policy Test Result Capacity is:
B- CC	999	1,037	38	Adequate
Blair	1,916	2,260	344	Adequate
Blake	1,130	1,304	174	Adequate
Churchill	1,347	1,336	-11	Inadequate
Clarksburg	1,340	1,146	-194	Inadequate
Damascus	919	937	18	Adequate
Einstein	851	1,408	557	Adequate
Gaithersburg	1,373	1,784	411	Adequate
Walter Johnson	1,492	1,778	286	Adequate
Kennedy	1,149	1,295	146	Adequate
Magruder	1,135	1,611	476	Adequate
R. Montgomery	965	973	8	Adequate
Northwest	1,875	1,964	89	Adequate
Northwood	1,013	1,308	295	Adequate
Paint Branch	1,147	1,308	161	Adequate
Poolesville	350	472	122	Adequate
Quince Orchard	1,291	1,647	356	Adequate
Rockville	828	972	144	Adequate
Seneca Valley	1,182	1,408	226	Adequate
Sherwood	1,244	1,475	231	Adequate
Springbrook	1,046	1,165	119	Adequate
Watkins Mill	1,075	1,200	125	Adequate
Wheaton	1,399	1,570	171	Adequate
Whitman	1,170	1,266	96	Adequate
Wootton	1,443	1,493	50	Adequate

In cases where elementary or middle schools articulate to more than one high school, enrollments and capacities are allocated proportionately to clusters.

High School Enrollment and MCPS Capacity @ 100%

Cluster Area	Projected Sept. 2012 Enrollment	100% MCPS* Capacity With Council Amended FY07-12 CIP	Capacity Remaining @ 100% MCPS capacity	Growth Policy Test Result Capacity is:
B- CC	1,622	1,656	34	Adequate
Blair	2,410	2,840	430	Adequate
Blake	1,800	1,733	-67	Inadequate
Churchill	1,885	1,985	100	Adequate
Clarksburg	1,479	1,629	150	Adequate
Damascus	1,437	1,625	188	Adequate
Einstein	1,556	1,602	46	Adequate
Gaithersburg	2,035	2,126	91	Adequate
Walter Johnson	2,068	2,131	63	Adequate
Kennedy	1,422	1,705	283	Adequate
Magruder	1,757	1,999	242	Adequate
R. Montgomery	1,895	1,966	71	Adequate
Northwest	2,146	2,214	68	Adequate
Northwood	1,361	1,526	165	Adequate
Paint Branch	1,697	2,148	451	Adequate
Poolesville	1,065	1,094	29	Adequate
Quince Orchard	1,743	1,809	66	Adequate
Rockville	1,125	1,598	473	Adequate
Seneca Valley	1,391	1,497	106	Adequate
Sherwood	2,054	2,054	0	Adequate
Springbrook	1,947	2,148	201	Adequate
Watkins Mill	1,634	1,836	202	Adequate
Wheaton	1,404	1,472	68	Adequate
Whitman	1,815	1,909	94	Adequate
Wootton	2,308	2,018	-290	Inadequate

Option 2B: MCPS Program Capacity @ 110%

Reflects Amended FY 2007-2012 Capital Improvements Program (CIP) and MCPS Enrollment Forecast

Elementary School Enrollment and MCPS Capacity @ 110%

Cluster Area	Projected Sept. 2012 Enrollment	100% MCPS* Capacity With Council Amended FY07-12 CIP	110% MCPS* Capacity With Council Amended FY07-12 CIP	Capacity Remaining @ 110% MCPS capacity	Growth Policy Test Result Capacity is:
B- CC	3,023	2,753	3,028	5	Adequate
Blair	3,734	3,940	4,334	600	Adequate
Blake	2,375	1,973	2,170	-205	Inadequate
Churchill	2,536	2,644	2,908	372	Adequate
Clarksburg	3,586	3,153	3,468	-118	Inadequate
Damascus	2,513	2,429	2,672	159	Adequate
Einstein	2,235	1,758	1,934	-301	Inadequate
Gaithersburg	3,691	3,934	4,327	636	Adequate
Walter Johnson	3,165	3,094	3,403	238	Adequate
Kennedy	2,355	1,798	1,978	-377	Inadequate
Magruder	2,545	2,523	2,775	230	Adequate
R. Montgomery	2,258	2,108	2,319	61	Adequate
Northwest	3,865	3,458	3,804	-61	Inadequate
Northwood	2,705	2,674	2,941	236	Adequate
Paint Branch	2,306	2,316	2,548	242	Adequate
Poolesville	593	755	831	238	Adequate
Quince Orchard	2,866	2,632	2,895	29	Adequate
Rockville	2,345	2,171	2,388	43	Adequate
Seneca Valley	2,098	2,187	2,406	308	Adequate
Sherwood	2,506	2,464	2,710	204	Adequate
Springbrook	2,733	2,825	3,108	375	Adequate
Watkins Mill	2,464	2,545	2,800	336	Adequate
Wheaton	2,469	2,149	2,364	-105	Inadequate
Whitman	2,120	2,051	2,256	136	Adequate
Wootton	2,977	3,082	3,390	413	Adequate

Middle School Enrollment and MCPS Capacity @ 110%

Cluster Area	Projected Sept. 2012 Enrollment	100% MCPS* Capacity With Council Amended FY07-12 CIP	110% MCPS* Capacity With Council Amended FY07-12 CIP	Capacity Remaining @ 110% MCPS capacity	Growth Policy Test Result Capacity is:
B- CC	999	1,037	1,141	142	Adequate
Blair	1,916	2,260	2,486	570	Adequate
Blake	1,130	1,304	1,434	304	Adequate
Churchill	1,347	1,336	1,470	123	Adequate
Clarksburg	1,340	1,146	1,261	-79	Inadequate
Damascus	919	937	1,031	112	Adequate
Einstein	851	1,408	1,549	698	Adequate
Gaithersburg	1,373	1,784	1,962	589	Adequate
Walter Johnson	1,492	1,778	1,956	464	Adequate
Kennedy	1,149	1,295	1,425	276	Adequate
Magruder	1,135	1,611	1,772	637	Adequate
R. Montgomery	965	973	1,070	105	Adequate
Northwest	1,875	1,964	2,160	285	Adequate
Northwood	1,013	1,308	1,439	426	Adequate
Paint Branch	1,147	1,308	1,439	292	Adequate
Poolesville	350	472	519	169	Adequate
Quince Orchard	1,291	1,647	1,812	521	Adequate
Rockville	828	972	1,069	241	Adequate
Seneca Valley	1,182	1,408	1,549	367	Adequate
Sherwood	1,244	1,475	1,623	379	Adequate
Springbrook	1,046	1,165	1,282	236	Adequate
Watkins Mill	1,075	1,200	1,320	245	Adequate
Wheaton	1,399	1,570	1,727	328	Adequate
Whitman	1,170	1,266	1,393	223	Adequate
Wootton	1,443	1,493	1,642	199	Adequate

In cases where elementary or middle schools articulate to more than one high school, enrollments and capacities are allocated proportionately to clusters.

High School Enrollment and MCPS Capacity @ 110%

Cluster Area	Projected Sept. 2012 Enrollment	100% MCPS* Capacity With Council Amended FY07-12 CIP	110% MCPS* Capacity With Council Amended FY07-12 CIP	Capacity Remaining @ 110% MCPS capacity	Growth Policy Test Result Capacity is:
B- CC	1,622	1,656	1,822	200	Adequate
Blair	2,410	2,840	3,124	714	Adequate
Blake	1,800	1,733	1,906	106	Adequate
Churchill	1,885	1,985	2,184	299	Adequate
Clarksburg	1,479	1,629	1,792	313	Adequate
Damascus	1,437	1,625	1,788	351	Adequate
Einstein	1,556	1,602	1,762	206	Adequate
Gaithersburg	2,035	2,126	2,339	304	Adequate
Walter Johnson	2,068	2,131	2,344	276	Adequate
Kennedy	1,422	1,705	1,876	454	Adequate
Magruder	1,757	1,999	2,199	442	Adequate
R. Montgomery	1,895	1,966	2,163	268	Adequate
Northwest	2,146	2,214	2,435	289	Adequate
Northwood	1,361	1,526	1,679	318	Adequate
Paint Branch	1,697	2,148	2,363	666	Adequate
Poolesville	1,065	1,094	1,203	138	Adequate
Quince Orchard	1,743	1,809	1,990	247	Adequate
Rockville	1,125	1,598	1,758	633	Adequate
Seneca Valley	1,391	1,497	1,647	256	Adequate
Sherwood	2,054	2,054	2,259	205	Adequate
Springbrook	1,947	2,148	2,363	416	Adequate
Watkins Mill	1,634	1,836	2,020	386	Adequate
Wheaton	1,404	1,472	1,619	215	Adequate
Whitman	1,815	1,909	2,100	285	Adequate
Wootton	2,308	2,018	2,220	-88	Inadequate

Option 2C: MCPS Program Capacity @ 115%

Reflects Amended FY 2007-2012 Capital Improvements Program (CIP) and MCPS Enrollment Forecast

Elementary School Enrollment and MCPS Capacity @ 115%

Cluster Area	Projected Sept. 2012 Enrollment	100% MCPS* Capacity With Council Amended FY07-12 CIP	115% MCPS* Capacity With Council Amended FY07-12 CIP	Capacity Remaining @ 110% MCPS capacity	Growth Policy Test Result Capacity is:
B- CC	3,023	2,753	3,166	143	Adequate
Blair	3,734	3,940	4,531	797	Adequate
Blake	2,375	1,973	2,269	-106	Inadequate
Churchill	2,536	2,644	3,041	505	Adequate
Clarksburg	3,586	3,153	3,626	40	Adequate
Damascus	2,513	2,429	2,793	280	Adequate
Einstein	2,235	1,758	2,022	-213	Inadequate
Gaithersburg	3,691	3,934	4,524	833	Adequate
Walter Johnson	3,165	3,094	3,558	393	Adequate
Kennedy	2,355	1,798	2,068	-287	Inadequate
Magruder	2,545	2,523	2,901	356	Adequate
R. Montgomery	2,258	2,108	2,424	166	Adequate
Northwest	3,865	3,458	3,977	112	Adequate
Northwood	2,705	2,674	3,075	370	Adequate
Paint Branch	2,306	2,316	2,663	357	Adequate
Poolesville	593	755	868	275	Adequate
Quince Orchard	2,866	2,632	3,027	161	Adequate
Rockville	2,345	2,171	2,497	152	Adequate
Seneca Valley	2,098	2,187	2,515	417	Adequate
Sherwood	2,506	2,464	2,834	328	Adequate
Springbrook	2,733	2,825	3,249	516	Adequate
Watkins Mill	2,464	2,545	2,927	463	Adequate
Wheaton	2,469	2,149	2,471	2	Adequate
Whitman	2,120	2,051	2,359	239	Adequate
Wootton	2,977	3,082	3,544	567	Adequate

Middle School Enrollment and MCPS Capacity @ 115%

Cluster Area	Projected Sept. 2012 Enrollment	100% MCPS* Capacity With Council Amended FY07-12 CIP	115% MCPS* Capacity With Council Amended FY07-12 CIP	Capacity Remaining @ 115% MCPS capacity	Growth Policy Test Result Capacity is:
B- CC	999	1,037	1,193	194	Adequate
Blair	1,916	2,260	2,599	683	Adequate
Blake	1,130	1,304	1,500	370	Adequate
Churchill	1,347	1,336	1,536	189	Adequate
Clarksburg	1,340	1,146	1,318	-22	Inadequate
Damascus	919	937	1,078	159	Adequate
Einstein	851	1,408	1,619	768	Adequate
Gaithersburg	1,373	1,784	2,052	679	Adequate
Walter Johnson	1,492	1,778	2,045	553	Adequate
Kennedy	1,149	1,295	1,489	340	Adequate
Magruder	1,135	1,611	1,853	718	Adequate
R. Montgomery	965	973	1,119	154	Adequate
Northwest	1,875	1,964	2,259	384	Adequate
Northwood	1,013	1,308	1,504	491	Adequate
Paint Branch	1,147	1,308	1,504	357	Adequate
Poolesville	350	472	543	193	Adequate
Quince Orchard	1,291	1,647	1,894	603	Adequate
Rockville	828	972	1,118	290	Adequate
Seneca Valley	1,182	1,408	1,619	437	Adequate
Sherwood	1,244	1,475	1,696	452	Adequate
Springbrook	1,046	1,165	1,340	294	Adequate
Watkins Mill	1,075	1,200	1,380	305	Adequate
Wheaton	1,399	1,570	1,806	407	Adequate
Whitman	1,170	1,266	1,456	286	Adequate
Wootton	1,443	1,493	1,717	274	Adequate

In cases where elementary or middle schools articulate to more than one high school, enrollments and capacities are allocated proportionately to clusters.

High School Enrollment and MCPS Capacity @ 115%

Cluster Area	Projected Sept. 2012 Enrollment	100% MCPS* Capacity With Council Amended FY07-12 CIP	115% MCPS* Capacity With Council Amended FY07-12 CIP	Capacity Remaining @ 115% MCPS capacity	Growth Policy Test Result Capacity is:
B- CC	1,622	1,656	1,904	282	Adequate
Blair	2,410	2,840	3,266	856	Adequate
Blake	1,800	1,733	1,993	193	Adequate
Churchill	1,885	1,985	2,283	398	Adequate
Clarksburg	1,479	1,629	1,873	394	Adequate
Damascus	1,437	1,625	1,869	432	Adequate
Einstein	1,556	1,602	1,842	286	Adequate
Gaithersburg	2,035	2,126	2,445	410	Adequate
Walter Johnson	2,068	2,131	2,451	383	Adequate
Kennedy	1,422	1,705	1,961	539	Adequate
Magruder	1,757	1,999	2,299	542	Adequate
R. Montgomery	1,895	1,966	2,261	366	Adequate
Northwest	2,146	2,214	2,546	400	Adequate
Northwood	1,361	1,526	1,755	394	Adequate
Paint Branch	1,697	2,148	2,470	773	Adequate
Poolesville	1,065	1,094	1,258	193	Adequate
Quince Orchard	1,743	1,809	2,080	337	Adequate
Rockville	1,125	1,598	1,838	713	Adequate
Seneca Valley	1,391	1,497	1,722	331	Adequate
Sherwood	2,054	2,054	2,362	308	Adequate
Springbrook	1,947	2,148	2,470	523	Adequate
Watkins Mill	1,634	1,836	2,111	477	Adequate
Wheaton	1,404	1,472	1,693	289	Adequate
Whitman	1,815	1,909	2,195	380	Adequate
Wootton	2,308	2,018	2,321	13	Adequate

Option 3A: Current AGP Test

Test Only Clarksburg Cluster Where New Development is Primary Reason for Enrollment Increases

Reflects Amended FY 2007-2012 Capital Improvements Program (CIP) and MCPS Enrollment Forecast

Elementary School Enrollment and MCPS Capacity

Cluster Area	Projected Sept. 2012 Enrollment	100% MCPS* Capacity With Council Amended FY07-12 CIP	Capacity Remaining @ 100% MCPS capacity
Clarksburg	3,586	3,153	-433

Growth Policy Test with Growth Policy (GP) Capacity

105% GP** Capacity With Council Amended FY07-12 CIP	Growth Policy Test: Students Above or Below 105 % GP Cap.	Growth Policy Test Result - Capacity is:
3,677	91	Adequate

Middle School Enrollment and MCPS Capacity

Cluster Area	Projected Sept. 2012 Enrollment	100% MCPS* Capacity With Council Amended FY07-12 CIP	Capacity Remaining @ 100% MCPS capacity
Clarksburg	1,340	1,146	-194

Growth Policy Test with Growth Policy (GP) Capacity

105% GP** Capacity With Council Amended FY07-12 CIP	Growth Policy Test: Students Above or Below 105 % GP Cap.	Growth Policy Test Result - Capacity is:
1,465	125	Adequate

High School Enrollment and MCPS Capacity

Cluster Area	Projected Sept. 2012 Enrollment	100% MCPS* Capacity With Council Amended FY07-12 CIP	Capacity Remaining @ 100% MCPS capacity
Clarksburg	1,479	1,629	150

Growth Policy Test with Growth Policy (GP) Capacity

100% GP** Capacity With Council Amended FY07-12 CIP	Growth Policy Test: Students Above or Below 100 % GP Cap.	Borrowing Necessary?	Growth Policy Test Result - Capacity is:
1,643	164	no	Adequate

Option 3B: Current AGP Test @ 100% GP Capacity All Levels

Test Only Clarksburg Cluster Where New Development is Primary Reason for Enrollment Increases

Reflects Amended FY 2007-2012 Capital Improvements Program (CIP) and MCPS Enrollment Forecast

Elementary School Enrollment and MCPS Capacity

Cluster Area	Projected Sept. 2012 Enrollment	100% MCPS* Capacity With Council Amended FY07-12 CIP	Capacity Remaining @ 100% MCPS capacity
Clarksburg	3,586	3,153	-433

Growth Policy Test with 100% Growth Policy (GP) Capacity

100% GP** Capacity With Council Amended FY07-12 CIP	Growth Policy Test: Students Above or Below 100 % GP Cap.	Growth Policy Test Result - Capacity is:
3,502	-84	Inadequate

Middle School Enrollment and MCPS Capacity

Cluster Area	Projected Sept. 2012 Enrollment	100% MCPS* Capacity With Council Amended FY07-12 CIP	Capacity Remaining @ 100% MCPS capacity
Clarksburg	1,340	1,146	-194

Growth Policy Test with 100% Growth Policy (GP) Capacity

100% GP** Capacity With Council Amended FY07-12 CIP	Growth Policy Test: Students Above or Below 100 % GP Cap.	Growth Policy Test Result - Capacity is:
1,395	55	Adequate

High School Enrollment and MCPS Capacity

Cluster Area	Projected Sept. 2012 Enrollment	100% MCPS* Capacity With Council Amended FY07-12 CIP	Capacity Remaining @ 100% MCPS capacity
Clarksburg	1,479	1,629	150

Growth Policy Test with Growth Policy (GP) Capacity

100% GP** Capacity With Council Amended FY07-12 CIP	Growth Policy Test: Students Above or Below 100 % GP Cap.	Borrowing Necessary?	Growth Policy Test Result - Capacity is:
1,643	164	no	Adequate

Option 3C: MCPS Program Capacity @ 110%

Test Only Clarksburg Cluster Where New Development is Primary Reason for Enrollment Increases

Reflects Amended FY 2007-2012 Capital Improvements Program (CIP) and MCPS Enrollment Forecast

Elementary School Enrollment and MCPS Capacity @ 110%

Cluster Area	Projected Sept. 2012 Enrollment	100% MCPS* Capacity With Council Amended FY07-12 CIP	110% MCPS* Capacity With Council Amended FY07-12 CIP	Capacity Remaining @ 110% MCPS capacity	Growth Policy Test Result Capacity is:
Clarksburg	3,586	3,153	3,468	-118	Inadequate

Middle School Enrollment and MCPS Capacity @ 110%

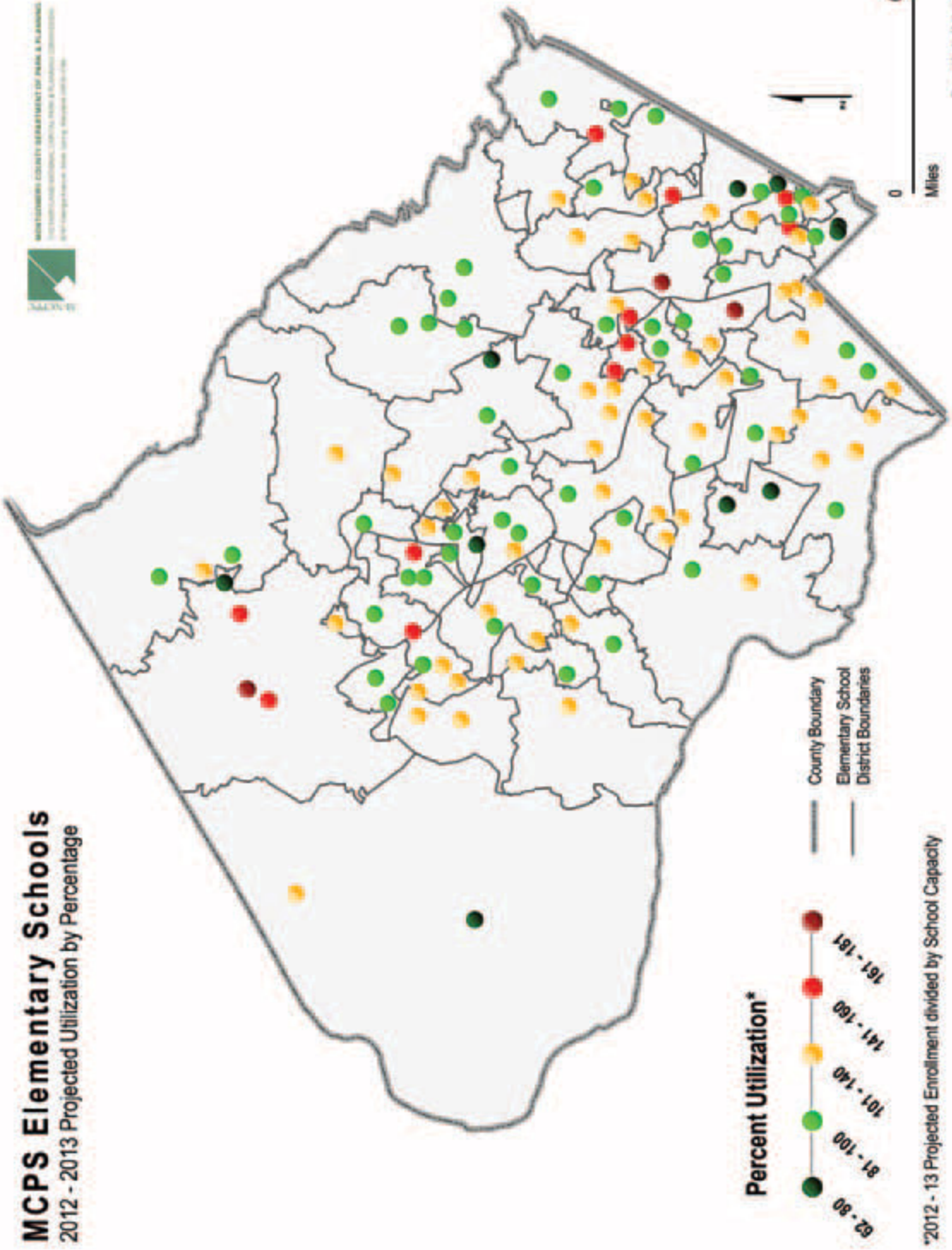
Cluster Area	Projected Sept. 2012 Enrollment	100% MCPS* Capacity With Council Amended FY07-12 CIP	110% MCPS* Capacity With Council Amended FY07-12 CIP	Capacity Remaining @ 110% MCPS capacity	Growth Policy Test Result Capacity is:
Clarksburg	1,340	1,146	1,261	-79	Inadequate

High School Enrollment and MCPS Capacity @ 110%

Cluster Area	Projected Sept. 2012 Enrollment	100% MCPS* Capacity With Council Amended FY07-12 CIP	110% MCPS* Capacity With Council Amended FY07-12 CIP	Capacity Remaining @ 110% MCPS capacity	Growth Policy Test Result Capacity is:
Clarksburg	1,479	1,629	1,792	313	Adequate

MCPS Elementary Schools

2012 - 2013 Projected Utilization by Percentage

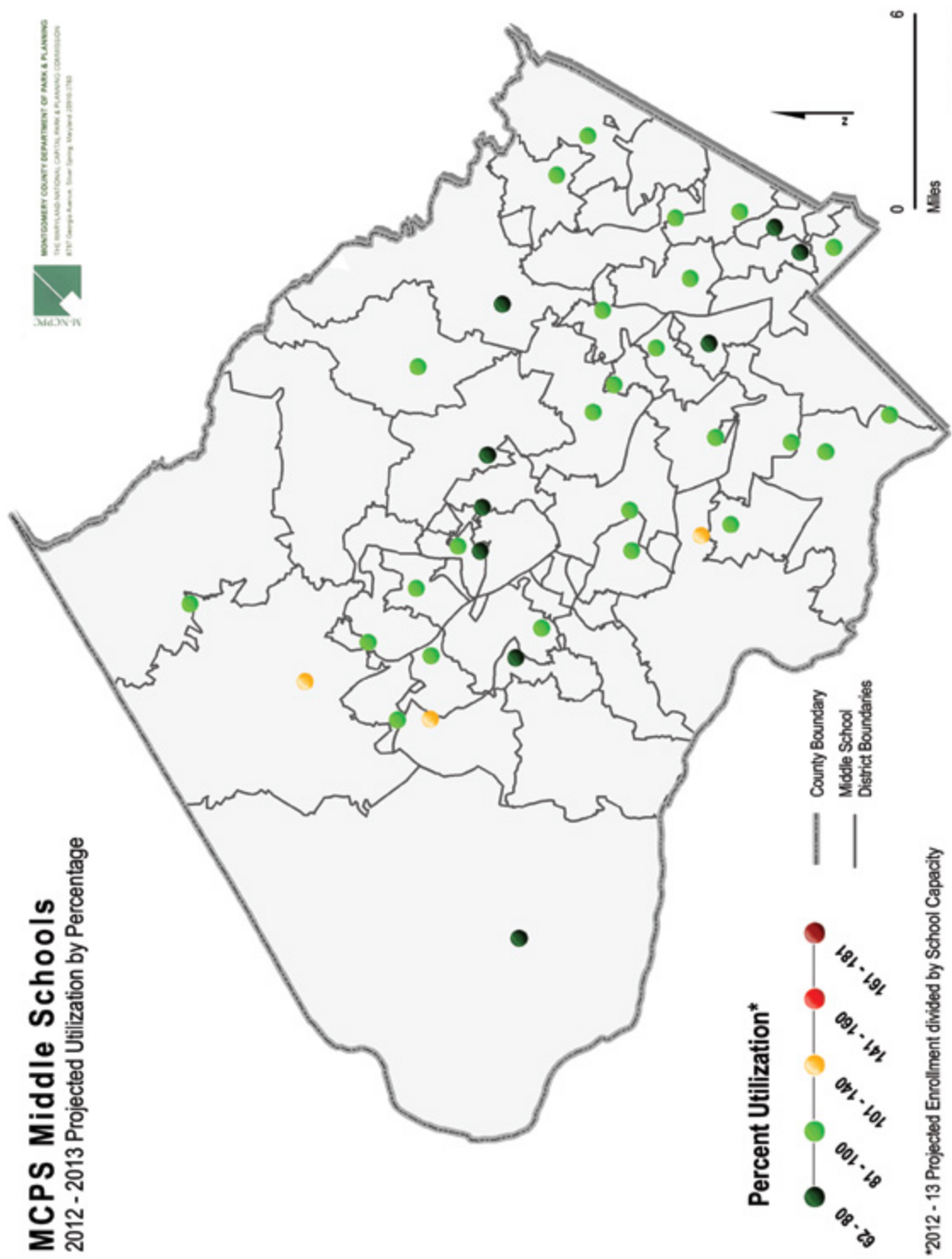


*2012 - 13 Projected Enrollment divided by School Capacity

Prepared by Jay Matheny
 March 2012

MCPS Middle Schools 2012 - 2013 Projected Utilization by Percentage


MONTGOMERY COUNTY DEPARTMENT OF PARK & PLANNING
 THE SMITHSONIAN NATIONAL CAPITAL PARK & PLANNING COMMISSION
 8127 Campbelt Avenue, Suite 200, Gaithersburg, Maryland 20878-1700



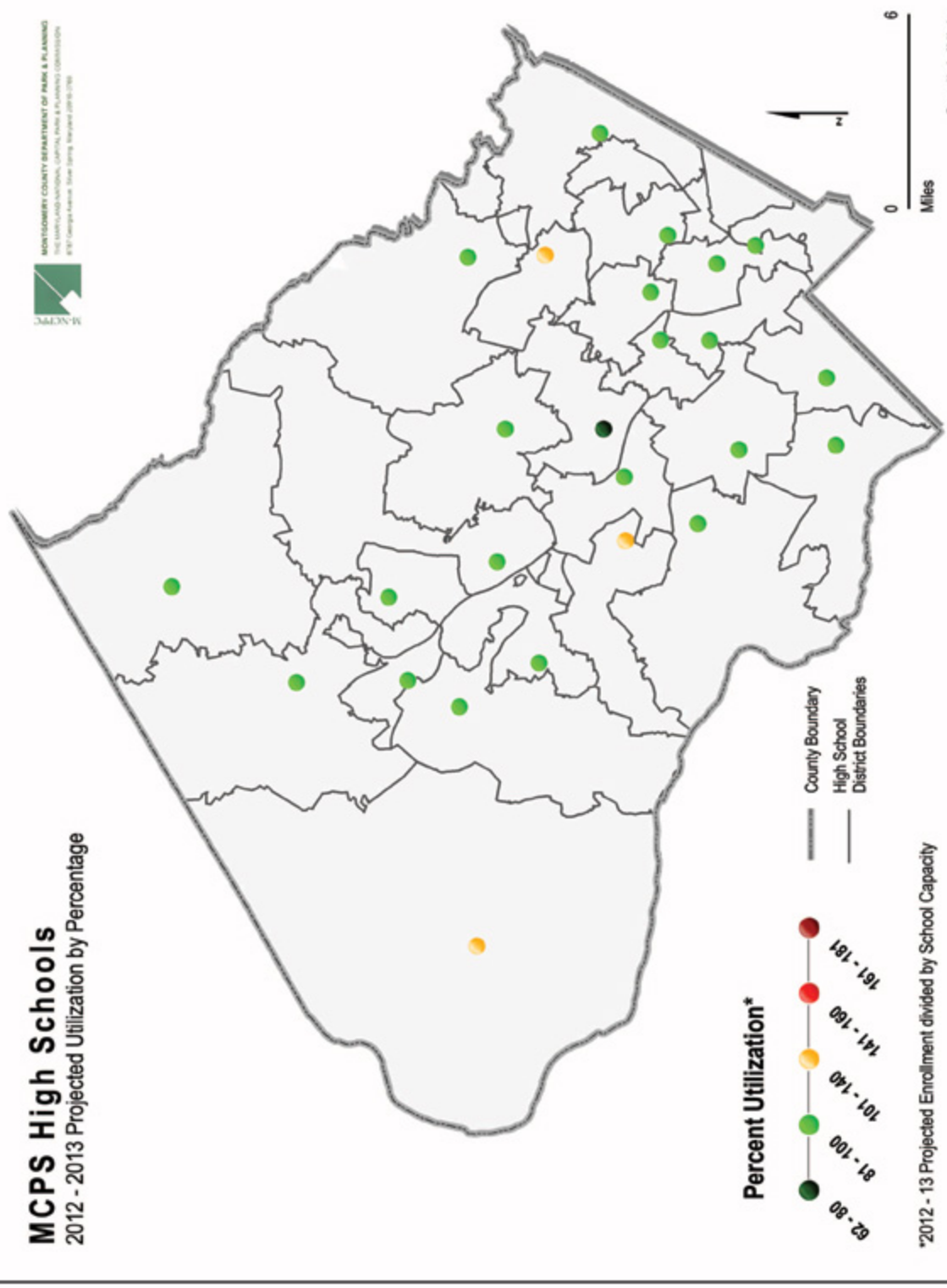
*2012 - 13 Projected Enrollment divided by School Capacity

Prepared by Jay Mulvihoppe
March 2007

MCPS High Schools

2012 - 2013 Projected Utilization by Percentage


MONTGOMERY COUNTY DEPARTMENT OF PARK & PLANNING
 THE LANDPLANNING, CAPITAL, PARKS & PLANNING COMMISSION
 8127 Campus Avenue, Suite 200, Rockville, Maryland 20850-7000

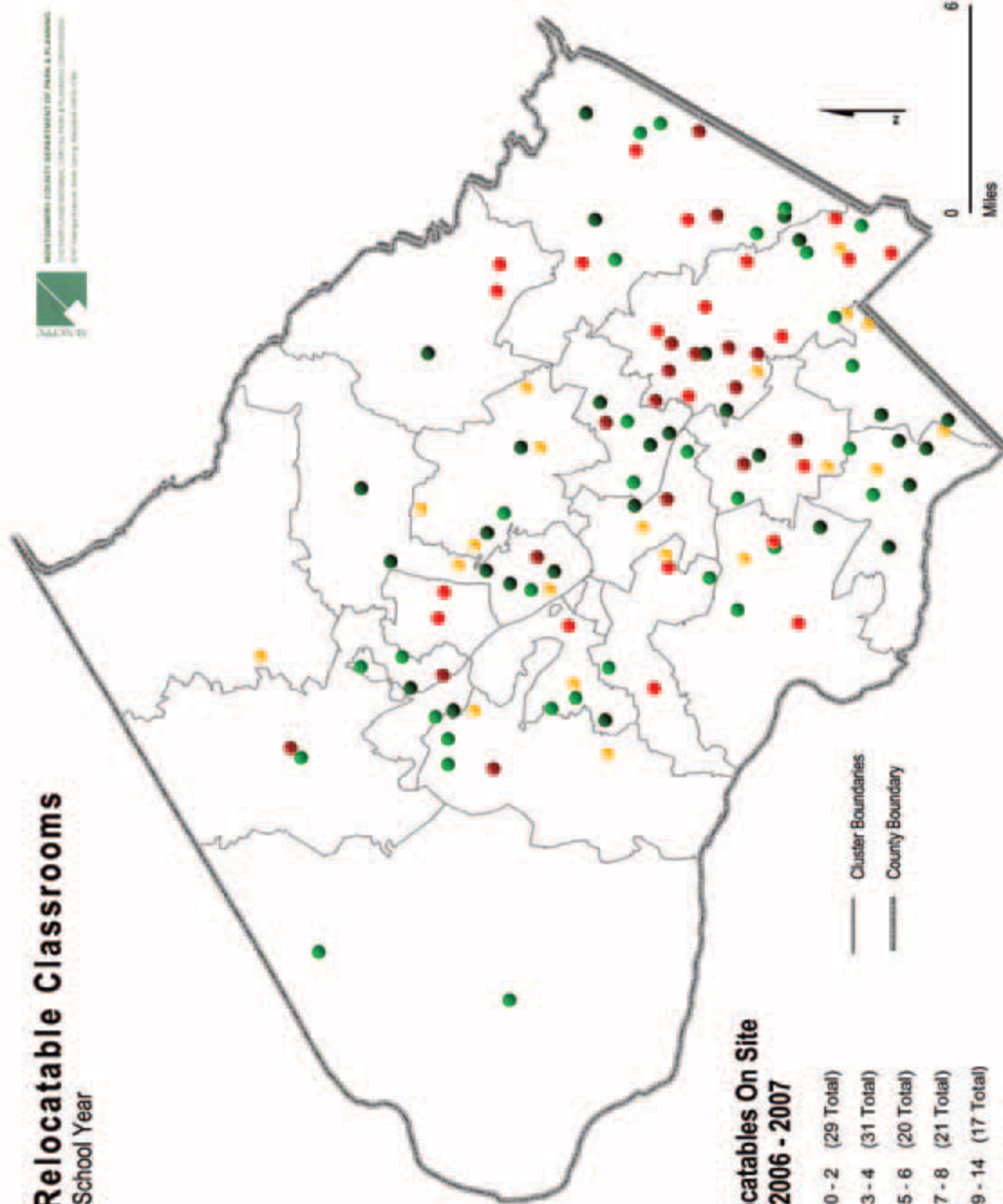


*2012 - 13 Projected Enrollment divided by School Capacity

Prepared by Jay Mulholyne
March 2007

MCPS Relocatable Classrooms

2006 - 2007 School Year



- Total Relocatables On Site For 2006 - 2007**
- 0 - 2 (29 Total)
 - 3 - 4 (31 Total)
 - 5 - 6 (20 Total)
 - 7 - 8 (21 Total)
 - 9 - 14 (17 Total)
- Cluster Boundaries
 — County Boundary



Prepared by Jay Matheny
 March 2007